

Rabbit Anti-ALK/p80 (CD246) Recombinant [MD73R]: RM0461, RM0461RTU7

Intended Use: For Research Use Only

Description: Recognizes a human p80 protein, identified as a hybrid of the anaplastic lymphoma kinase (ALK) gene and the nucleophosmin (NPM) gene resulting from the t(2;5)(p23;q35) translocation found in 30-50% of CD30+ large cell lymphomas. This rabbit polyclonal antibody can be used to detect p80 in these lymphomas and may also be used to detect a recently described subtype of large B cell lymphoma, which expresses the full length ALK protein. The wild-type anaplastic lymphoma kinase (ALK) protein is a 200kDa transmembrane receptor tyrosine kinase. Its expression is restricted to a few scattered cells in the nervous system (some glial cells and neurons, and a few endothelial cells and pericytes). The hybrid gene, NPM-ALK, created by the t(2;5)(p23;q35) chromosomal translocation encodes part of the nucleolar phosphoprotein, nucleophosmin (NPM), joined to the entire cytoplasmic portion of the anaplastic lymphoma kinase (ALK) receptor tyrosine kinase. As a consequence, the ALK gene comes under the control of the NPM promoter, which induces a permanent and ubiquitous transcription of the NPM-ALK hybrid gene, resulting in the production of a 80kDa NPM-ALK chimeric protein. This translocation is found in anaplastic large cell lymphomas (ALCL). Reportedly, expression of ALK indicates a better prognosis. Approximately 5%-10% of non-small cell lung carcinomas also express ALK protein producing a cytoplasmic staining pattern. This antibody also reacts with blood vessels that serves as an internal positive control.

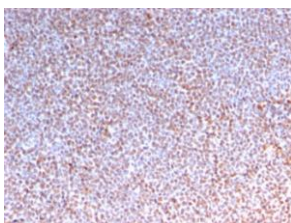
Specifications:

Clone: MD73R
 Source: Rabbit
 Isotype: IgG
 Reactivity: Human
 Immunogen: Recombinant human ALK protein fragment aa200-335
 Localization: Cytoplasm, nucleus
 Formulation: Antibody in PBS pH7.4, containing BSA and ≤ 0.09% sodium azide (NaN3)
 Storage: Store at 2°- 8°C
 Applications: IHC
 Package:

Description	Catalog No.	Size
ALK/p80 (CD246) Recombinant Concentrated	RM0461	1 ml
ALK/p80 (CD246) Recombinant Prediluted	RM0461RTU7	7 ml

IHC Procedure*:

Positive Control Tissue: Anaplastic large cell lymphoma
 Concentrated Dilution: 50-200
 Pretreatment: Tris EDTA pH9.0, 15 minutes using Pressure Cooker, or 30-60 minutes using water bath at 95°-99°C
 Incubation Time and Temp: 30-60 minutes @ RT
 Detection: Refer to the detection system manual
 * Result should be confirmed by an established diagnostic procedure.



FFPE human anaplastic lymphoma stained with anti-ALK/p80 using DAB

References

1. Alk expression defines a distinct group of T/Null lymphomas (“ALK Lym-phomas”) with a wide morphologic spectrum. Falini B, Bigerna B, et al. Am J pathol 153(3) Sept. 1998 P. 875-886
2. Detection of T(2;5) in Anaplastic Large Cell lymphoma. Comparison of Immunohistochemical studies , FISH, and Rt-PCR in paraffin-embedded tissue. Cataldo KA, et al: Am J Surg Pathol 32(1):1386-1392, 1999.

Doc. 100-RM0461
Rev. A