

Mt. Lassen JFO

*Empowered by God's love
we honor each other,
acknowledging differences,
as together we go farther out
to explore new frontiers of
God's limitless love
and opportunities for service.*



Monday, June 24, 2024
to
Saturday June 29, 2024
Mineral, CA

For more information and online
payments, visit our website
www.LassenJFO.com

Campers should arrive after
3pm on Monday, June 24th.
Check in at the Dining Hall
First event is Monday Dinner at 6pm

Mt. Lassen JFO Daily Schedule

Morning Meditation - Begin each day with God in
quiet reflection overlooking the meadow.

Singing - Praise God in joyous, spirited song.

Talks - Listen to our speakers as they share their personal
faith journeys.

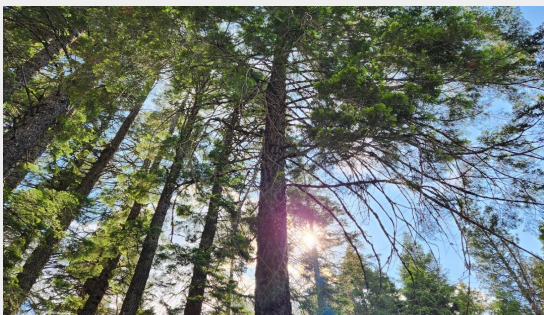
Rhythms - Use exercise and movement as a means of
experiencing wholeness.

Creatives - Let God speak as you explore various
inspired outlets such as chalk, watercolor, clay, or writing.

Prayer Groups - In small adult groups, we share with
each other while experiencing the power of prayer as we
connect to God.

Horizontal Hour - Take advantage of a quiet time of
rest.

Relaxation and Fun - From softball games to
swimming, many activities are available in and around
Mt. Lassen.



Register Online
www.LassenJFO.com
Pricing available on our website

Due to a very generous donation, we are able
to waive room and board fees for youth and
did not increase rates for adults for the 2024
camp.

All campers should be registered by June
10th, and paid in full by June 17th, 2024.
Early Registration is greatly appreciated
for camp planning. We accept installment
payments in amounts that fit your budget.

We are a family camp!
We hope you will share a cabin with your
chosen family of any configuration.

If you need assistance finding roommates,
please contact our Registrar
Dennis Johnson at (530)391-9575

Mt. Lassen JFO would like to make camp
accessible to everyone. Please let us know
by May 15th if you would benefit from an
ASL interpreter or other accommodation at
camp.

How to get there: Take 1-5 to Red Bluff. Exit
Hwy 99 East. Go 3 miles. Turn left on Hwy 36
and go 37 miles. Turn right shortly after crossing
Battle Creek. Go about ¼ mile to Lassen Camp.
Emergency Phone Number During Camp:
(530)595-3369

About Us

Mt. Lassen Journey Farthest Out is part of an ecumenical Christian movement birthed in 1930 by the visionary Dr. Glenn Clark. JFO is a time set apart for spiritual growth as we open our lives to God physically, mentally, emotionally, and spiritually. We have a vision that our camp is a place where all people are accepted with the unconditional love that Jesus shares.

Mt. Lassen JFO is designed for people of all ages. We share our time and faith through the generations. A youth program is provided for toddlers through High School. Young Adults meet with their leader each evening for fellowship and fun.

You are invited to share in the journey!

First time and returning campers are all welcome. Sharing the camp experience can expose new facets to relationships and be rewarding for everyone.

Scholarships and Work Camperships:

Lassen Camp is happy to provide some partial to full scholarships with priority given to first time campers. There are also a few work camperships available to those willing to work in the dining room daily. Campership applicants must be 18 years or older and have attended one previous camp full time.

For more information
Contact our Registrar, Dennis
(530)391-9575
www.LassenJFO.com

Speaking Leaders



Danielle Jones grew up in a small town in Ohio and moved to California in the early 80's. She was invited to camp by her mom over 10 years ago and ever since her first camp experience finds JFO to be an essential part of her spiritual journey, growth, and well-being. JFO is her chosen family of the heart and she feels blessed to be counted a member of this beloved community.

Danielle is committed to the values of Service, Growth, and Compassion, which have shaped her perspective and guided her journey. It is due to this sacred purpose, she has dedicated over 25 years to the field of education.

With a life's purpose centered around abiding in love, she aims to spread positivity and light wherever she goes. Through her strengths of being a learner, fostering connections, and an unwavering belief, the vision of Glenn Clark to be Athletes of the Spirit coalesces with Danielle's aspirations for her life's journey.

Currently residing in Oakdale, CA, with her loving family, including her husband, son, and mother, she also holds the cherished title of being Robby's grandma. A daughter and son-in-law complete her beautiful familial circle.



Anders Nielsen is a lifelong JFOer, having come up in the Winni JFO camp in NH since he was in the womb. Now as an adult, he is on a journey farther out that he is grateful to have kicked off with the spiritual family in the JFO community. Anders lives in Portland, ME where he performs and produces live comedy events year round.

2024 Leaders

Song Leader

Donna McAvoy,

Kirsten Nielsen

Accompanist

Dennis Johnson

Rhythms

Adrienne Kerr

Creatives

Sierra Bennett

Youth and Young Adult Leaders TBA
Check out our website for Leadership updates as we get closer to Camp!

Parents and Sponsors are responsible for their children/youth for the entire camp program. We encourage full participation in each aspect of the camp day for all campers

