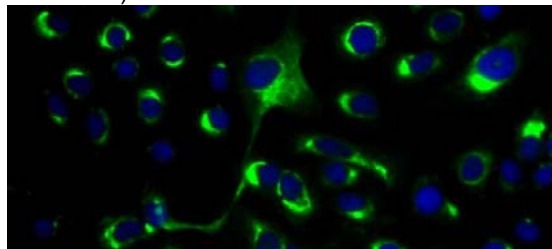


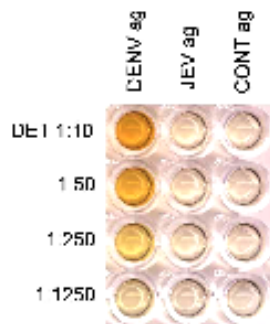
DE1 datasheet

Product name Anti-DENGUE VIRUS antibody, DE1.  
 Code no. DE1  
 Clone ID MF4/5/A5/C3-3/D4/C6/F3/A4  
 Description Dengue virus group-specific mouse monoclonal antibody.  
 Immunogen DENV2 (16681) infected supernatant followed by lysate booster.  
 Specificity This monoclonal antibody reacts with a conformational epitope present on DENV1, 2, 3 and 4 E.  
 Isotype IgG2b, kappa.  
 Intended use This monoclonal antibody is intended for use in the IgM capture ELISA for the diagnosis of dengue IgM in patient serum samples. It is the dengue virus specific monoclonal antibody currently being used in the commercially available Dengue IgM dot blot assay and Dengue IgM capture ELISA (Venture Technologies Sdn Bhd).  
 Reagent provided This product is supplied as cell culture supernatant and contains ProClin150.  
 Storage Stable at 4°C.  
 Applications This monoclonal antibody may also be used in an indirect immunofluorescence assay for the detection of dengue antigens in infected cells. Does not work very well in FRNT. It has been tested in other ELISA formats including a dengue antigen capture ELISA and the dengue IgG capture ELISA. Optimal dilutions for usage should be determined by enduser. This monoclonal antibody is not suitable for western blot (non-reducing unheated conditions).

Data



Immunofluorescence of DENV2 infected Vero cells with DE1.



DE1 titration in an IgG capture ELISA.



**INTEGRATED RESEARCH ASSOCIATES, LLC.**

4050 Redwood Highway Suite E, San Rafael, California, USA 94903

Tel: 415-524-2047; Fax: 415-276-4526

Email: [info@integratedresearchassociates.com](mailto:info@integratedresearchassociates.com)

Website: [www.integratedresearchassociates.com](http://www.integratedresearchassociates.com)

DE2 datasheet

Product name	Anti-DENGUE VIRUS antibody, DE2.
Code no.	DE2
Clone ID	BF1/4/A4-1
Description	Dengue virus group-specific mouse monoclonal antibody.
Immunogen	DENV2 (16681) infected supernatant followed by lysate booster.
Specificity	This monoclonal antibody reacts with a conformational epitope present on DENV1, 2, 3 and 4 E.
Isotype	IgG2a, kappa.
Intended use	Research reagent.
Reagent provided	This product is supplied as cell culture supernatant and contains ProClin150.
Storage	Stable at 4°C.
Applications	This monoclonal antibody may be used in an indirect immunofluorescence assay for the detection of dengue antigens in infected cells. It has been tested in ELISA formats including a dengue antigen capture ELISA as well as the dengue IgM capture and IgG capture ELISA. Optimal dilutions for usage should be determined by enduser. This monoclonal antibody is not suitable for western blot (non-reducing unheated conditions) or FRNT.
Data	



**INTEGRATED RESEARCH ASSOCIATES, LLC.**

4050 Redwood Highway Suite E, San Rafael, California, USA 94903

Tel: 415-524-2047; Fax: 415-276-4526

Email: [info@integratedresearchassociates.com](mailto:info@integratedresearchassociates.com)

Website: [www.integratedresearchassociates.com](http://www.integratedresearchassociates.com)

DE3 datasheet

Product name	Anti-DENV E antibody, DE3.
Code no.	DE3
Clone ID	MF43/1/D6/G6
Description	DENV2 E glycoprotein specific mouse monoclonal antibody.
Immunogen	DENV2 (16681) infected supernatant followed by lysate booster.
Specificity	This monoclonal antibody reacts with the linear epitope PTLDFE of DENV2 E.
Isotype	IgG1, kappa.
Intended use	Research reagent.
Reagent provided	This product is supplied as cell culture supernatant and contains ProClin150.
Storage	Stable at 4°C.
Applications	This monoclonal antibody has been primarily used to detect DENV2 in a western blot under reducing conditions. Detects DENV2, 4 by FRNT.

Data

DE4 datasheet

Product name	Anti-DENV E antibody, DE4.
Code no.	DE4
Clone ID	HF6-2/C3-6/D12-1
Description	DENV E glycoprotein specific mouse monoclonal antibody.
Immunogen	Recombinant DENV E protein.
Specificity	This monoclonal antibody reacts with a conformational epitope present on DENV1, 2 and 3 E.
Isotype	IgG1, kappa.
Intended use	Research reagent.
Reagent provided	This product is supplied as cell culture supernatant and contains ProClin150.
Storage	Stable at 4°C.
Applications	This monoclonal antibody has been primarily used for the detection of DENV1, 2 and 3 antigens in an antigen capture ELISA. Detects D3 by western blot (non-reducing unheated conditions) and FRNT.

Data



Assay steps :

- Anti-mouse Ig coated well
- Blocked with BSA
- Monoclonal antibody
- Antigen sample
- Polyclonal anti-flavivirus antibody
- Conjugate
- Substrate

DE5 datasheet

Product name	Anti-DENV E antibody, DE5.
Code no.	DE5
Clone ID	HF6-3/A6-4/E7
Description	DENV E glycoprotein specific mouse monoclonal antibody.
Immunogen	Recombinant DENV E protein.
Specificity	This monoclonal antibody reacts with a conformational epitope present in DENV1 and 3 E.
Isotype	IgG1, kappa.
Intended use	Research reagent.
Reagent provided	This product is supplied as cell culture supernatant and contains ProClin150.
Storage	Stable for a year at 4°C.
Applications	This monoclonal antibody has been primarily used for the detection of DENV1 and 3 antigens in an antigen capture ELISA. Detects D3 by western blot (non-reducing unheated conditions). Does not work very well in FRNT.

Data

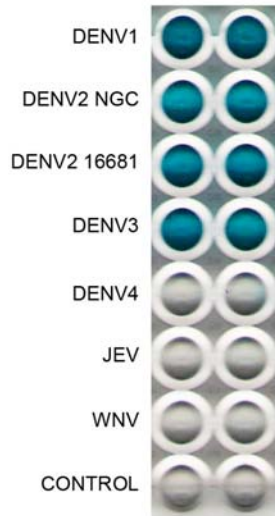


Assay steps :  
 Anti-mouse Ig coated well  
 Blocked with BSA  
 Monoclonal antibody  
 Antigen sample  
 Polyclonal anti-flavivirus antibody  
 Conjugate  
 Substrate

DE6 datasheet

Product name	Anti-DENV E antibody, DE6.
Code no.	DE6
Clone ID	HF6-3/B6-1/H12
Description	DENV E glycoprotein specific mouse monoclonal antibody.
Immunogen	Recombinant DENV E protein.
Specificity	This monoclonal antibody reacts with a conformational epitope present in DENV1, 2 and 3 E.
Isotype	IgG1, kappa.
Intended use	Research reagent.
Reagent provided	This product is supplied as cell culture supernatant and contains ProClin150.
Storage	Stable at 4°C.
Applications	This monoclonal antibody has been primarily used for the detection of DENV1, 2 and 3 antigens in an antigen capture ELISA. Detects DENV3 by western blot (non-reducing unheated conditions) and FRNT.

Data



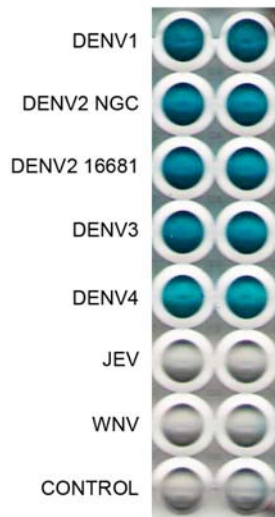
Assay steps :

- Anti-mouse Ig coated well
- Blocked with BSA
- Monoclonal antibody
- Antigen sample
- Polyclonal anti-flavivirus antibody
- Conjugate
- Substrate

DE7 datasheet

Product name            Anti-DENV E antibody, DE7.  
 Code no.                 DE7  
 Clone ID                 HF8-1/D2-2/G4  
 Description             DENV E glycoprotein specific mouse monoclonal antibody.  
 Immunogen             Recombinant DENV E protein.  
 Specificity             This monoclonal antibody reacts with a conformational epitope present in DENV1, 2, 3 and 4 E.  
 Isotype                 IgG1, kappa.  
 Intended use            Research reagent.  
 Reagent provided      This product is supplied as cell culture supernatant and contains ProClin150.  
 Storage                 Stable at 4°C.  
 Applications            This monoclonal antibody has been primarily used for the detection of DENV1, 2, 3 and 4 antigens in an antigen capture ELISA. This monoclonal antibody is not suitable for western blot (non-reducing unheated conditions). Does not work very well in FRNT. Can neutralize DENV1, 2, 3 and 4 in a standard VERO PRNT.

Data

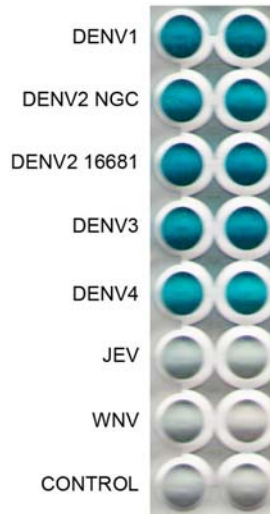


Assay steps :  
 Anti-mouse Ig coated well  
 Blocked with BSA  
 Monoclonal antibody  
 Antigen sample  
 Polyclonal anti-flavivirus antibody  
 Conjugate  
 Substrate

DE8 datasheet

Product name Anti-DENV E antibody, DE8.  
 Code no. DE8  
 Clone ID HF8-3/B2-8/H9  
 Description DENV E glycoprotein specific mouse monoclonal antibody.  
 Immunogen Recombinant DENV E protein.  
 Specificity This monoclonal antibody reacts with a conformational epitope present in DENV1, 2, 3 and 4 E.  
 Isotype IgG1, kappa.  
 Intended use Research reagent.  
 Reagent provided This product is supplied as cell culture supernatant and contains ProClin150.  
 Storage Stable at 4°C.  
 Applications This monoclonal antibody has been primarily used for the detection of DENV1, 2, 3 and 4 antigens in an antigen capture ELISA. Detects DENV2, 4 by western blot (non-reducing unheated conditions) and DENV2 by FRNT.

Data



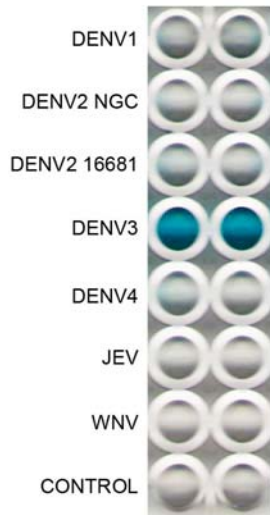
Assay steps :  
 Anti-mouse Ig coated well  
 Blocked with BSA  
 Monoclonal antibody  
 Antigen sample  
 Polyclonal anti-flavivirus antibody  
 Conjugate  
 Substrate



DE9 datasheet

Product name	Anti-DENV serotype 3 antibody, DE9.
Code no.	DE9
Clone ID	HF8-4/C1-1/B9
Description	DENV E glycoprotein specific mouse monoclonal antibody.
Immunogen	Recombinant DENV E protein.
Specificity	This monoclonal antibody reacts with a conformational epitope present in DENV3 E.
Isotype	IgG1, kappa.
Intended use	Research reagent.
Reagent provided	This product is supplied as cell culture supernatant and contains ProClin150.
Storage	Stable at 4°C.
Applications	This monoclonal antibody has been primarily used for the detection of DENV3 antigens in an antigen capture ELISA. This monoclonal antibody is not suitable for western blot (non-reducing unheated conditions). Detects DENV3 by FRNT.

Data



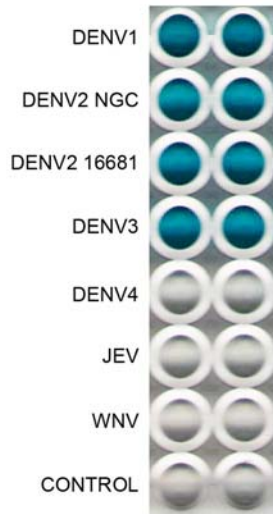
Assay steps :

- Anti-mouse Ig coated well
- Blocked with BSA
- Monoclonal antibody
- Antigen sample
- Polyclonal anti-flavivirus antibody
- Conjugate
- Substrate

DE10 datasheet

Product name Anti-DENV E antibody, DE10.  
 Code no. DE10  
 Clone ID HF8-4/D4-6/H11  
 Description DENV E glycoprotein specific mouse monoclonal antibody.  
 Immunogen Recombinant DENV E protein.  
 Specificity This monoclonal antibody reacts with a conformational epitope present in DENV1, 2 and 3 E.  
 Isotype IgG1, kappa.  
 Intended use Research reagent.  
 Reagent provided This product is supplied as cell culture supernatant and contains ProClin150.  
 Storage Stable at 4°C.  
 Applications This monoclonal antibody has been primarily used for the detection of DENV1, 2 and 3 antigens in an antigen capture ELISA. Detects DENV1 by western blot (non-reducing unheated conditions) and DENV1, 2 by FRNT.

Data

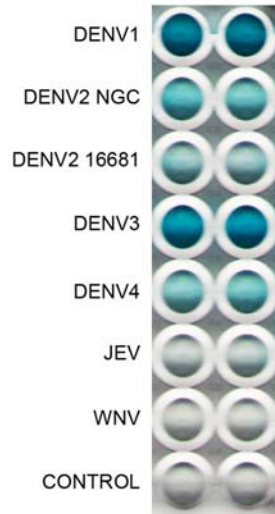


Assay steps :  
 Anti-mouse Ig coated well  
 Blocked with BSA  
 Monoclonal antibody  
 Antigen sample  
 Polyclonal anti-flavivirus antibody  
 Conjugate  
 Substrate

DE11 datasheet

Product name	Anti-DENV E antibody, DE11.
Code no.	DE11
Clone ID	HF8-1/A2-2/D3
Description	DENV E glycoprotein specific mouse monoclonal antibody.
Immunogen	Recombinant DENV E protein.
Specificity	This monoclonal antibody reacts with a conformational epitope present in DENV1 and 3 E.
Isotype	IgG1, kappa.
Intended use	Research reagent.
Reagent provided	This product is supplied as cell culture supernatant and contains ProClin150.
Storage	Stable at 4°C.
Applications	This monoclonal antibody has been primarily used for the detection of DENV1 and 3 antigens in an antigen capture ELISA. This monoclonal antibody is not suitable for western blot (non-reducing unheated conditions) or FRNT.

Data



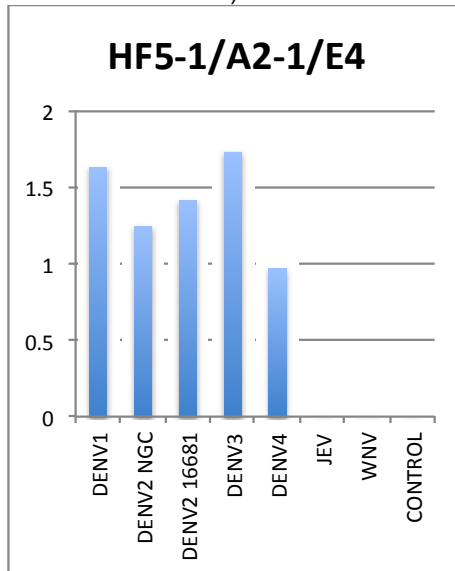
Assay steps :

- Anti-mouse Ig coated well
- Blocked with BSA
- Monoclonal antibody
- Antigen sample
- Polyclonal anti-flavivirus antibody
- Conjugate
- Substrate

DE12 datasheet

Product name Anti-DENV E antibody, DE12.  
 Code no. DE12  
 Clone ID HF5-1/A2-1/E4  
 Description DENV E glycoprotein specific mouse monoclonal antibody.  
 Immunogen Recombinant DENV E protein.  
 Specificity This monoclonal antibody reacts with a conformational epitope present on DENV1, 2, 3 and 4 E.  
 Isotype IgG1, kappa.  
 Intended use Research reagent.  
 Reagent provided This product is supplied as cell culture supernatant and contains ProClin150.  
 Storage Stable at 4°C.  
 Applications This monoclonal antibody has been primarily used for the detection of DENV1, 2, 3 and 4 antigens in an antigen capture ELISA. Detects DENV3 by western blot (non-reducing unheated conditions) and FRNT.

Data

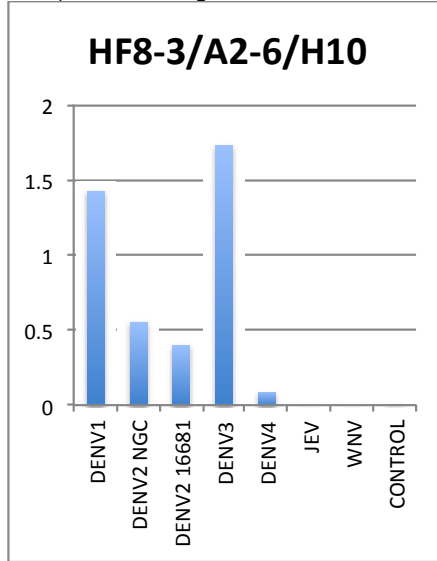


Assay steps :  
 Anti-mouse Ig coated well  
 Blocked with BSA  
 Monoclonal antibody  
 Antigen sample  
 Polyclonal anti-flavivirus antibody  
 Conjugate  
 Substrate

DE13 datasheet

Product name Anti-DENV E antibody, DE13.  
 Code no. DE13  
 Clone ID HF8-3/A2-6/H10  
 Description DENV E glycoprotein specific mouse monoclonal antibody.  
 Immunogen Recombinant DENV E protein.  
 Specificity This monoclonal antibody reacts with a conformational epitope present in DENV1 and 3 E.  
 Isotype IgG1, kappa.  
 Intended use Research reagent.  
 Reagent provided This product is supplied as cell culture supernatant and contains ProClin150.  
 Storage Stable at 4°C.  
 Applications This monoclonal antibody has been primarily used for the detection of DENV1 and 3 antigens in an antigen capture ELISA. This monoclonal antibody is not suitable for western blot (non-reducing unheated conditions) or FRNT.

Data

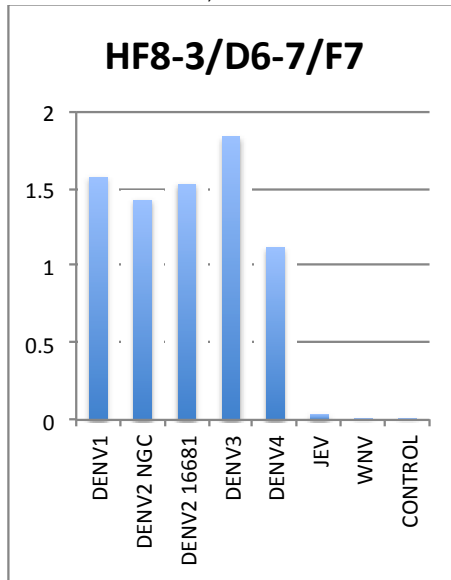


Assay steps :  
 Anti-mouse Ig coated well  
 Blocked with BSA  
 Monoclonal antibody  
 Antigen sample  
 Polyclonal anti-flavivirus antibody  
 Conjugate  
 Substrate

DE14 datasheet

Product name Anti-DENV E antibody, DE14.  
 Code no. DE14  
 Clone ID HF8-3/D6-7/F7  
 Description DENV E glycoprotein specific mouse monoclonal antibody.  
 Immunogen Recombinant DENV E protein.  
 Specificity This monoclonal antibody reacts with a conformational epitope present in DENV1, 2, 3 and 4 E.  
 Isotype IgG1, kappa.  
 Intended use Research reagent.  
 Reagent provided This product is supplied as cell culture supernatant and contains ProClin150.  
 Storage Stable at 4°C.  
 Applications This monoclonal antibody has been primarily used for the detection of DENV1, 2, 3 and 4 antigens in an antigen capture ELISA. This monoclonal antibody is not suitable for western blot (non-reducing unheated conditions). Does not work very well in FRNT. Can neutralize DENV1, 2 and 3 in a standard VERO PRNT.

Data

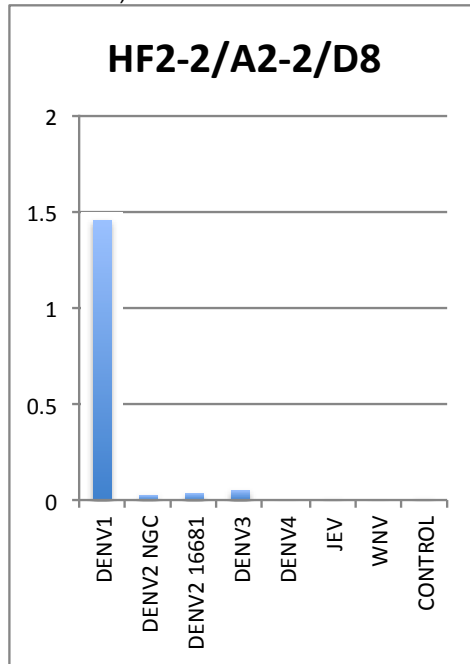


Assay steps :  
 Anti-mouse Ig coated well  
 Blocked with BSA  
 Monoclonal antibody  
 Antigen sample  
 Polyclonal anti-flavivirus antibody  
 Conjugate  
 Substrate

DE15 datasheet

Product name	Anti-DENV serotype 1 antibody, DE15.
Code no.	DE15
Clone ID	HF2-2/A2-2/D8
Description	DENV serotype 1 E glycoprotein specific mouse monoclonal antibody.
Immunogen	Recombinant DENV E protein.
Specificity	This monoclonal antibody reacts with a conformational epitope present on DENV1 E.
Isotype	IgG1, kappa.
Intended use	Research reagent.
Reagent provided	This product is supplied as cell culture supernatant and contains ProClin150.
Storage	Stable at 4°C.
Applications	This monoclonal antibody has been primarily used for the detection of DENV1 antigen in an antigen capture ELISA. This monoclonal antibody is not suitable for western blot (non-reducing unheated conditions) or FRNT.

Data

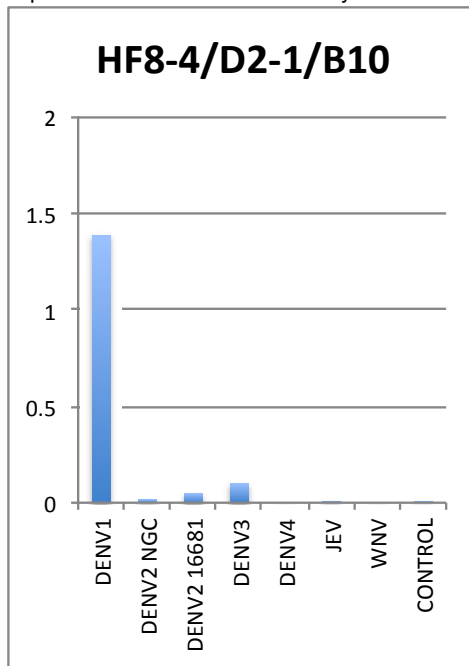


Assay steps :  
 Anti-mouse Ig coated well  
 Blocked with BSA  
 Monoclonal antibody  
 Antigen sample  
 Polyclonal anti-flavivirus antibody  
 Conjugate  
 Substrate

DE16 datasheet

Product name	Anti-DENV serotype 1 antibody, DE16.
Code no.	DE16
Clone ID	HF8-4/D2-1/B10
Description	DENV serotype 1 E glycoprotein specific mouse monoclonal antibody.
Immunogen	Recombinant DENV E protein.
Specificity	This monoclonal antibody reacts with a conformational epitope present on DENV1 E.
Isotype	IgG1, kappa.
Intended use	Research reagent.
Reagent provided	This product is supplied as cell culture supernatant and contains ProClin150.
Storage	Stable at 4°C.
Applications	This monoclonal antibody has been primarily used for the detection of DENV1 antigen in an antigen capture ELISA. Detects DENV1 by western blot (non-reducing unheated conditions) and FRNT.

Data



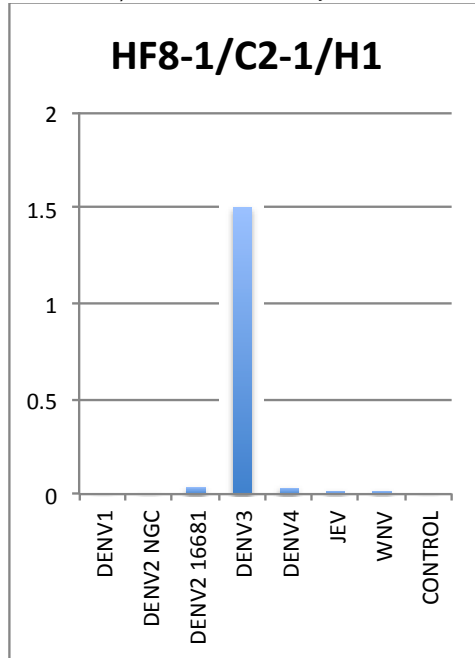
Assay steps :  
 Anti-mouse Ig coated well  
 Blocked with BSA  
 Monoclonal antibody  
 Antigen sample  
 Polyclonal anti-flavivirus antibody  
 Conjugate  
 Substrate



DE17 datasheet

Product name Anti-DENV serotype 3 antibody, DE17.  
 Code no. DE17  
 Clone ID HF8-1/C2-1/H1  
 Description DENV serotype 3 E glycoprotein specific mouse monoclonal antibody.  
 Immunogen Recombinant DENV E protein.  
 Specificity This monoclonal antibody reacts with a conformational epitope present on DENV3 E.  
 Isotype IgG1, kappa.  
 Intended use Research reagent.  
 Reagent provided This product is supplied as cell culture supernatant and contains ProClin150.  
 Storage Stable at 4°C.  
 Applications This monoclonal antibody has been primarily used for the detection of DENV3 antigen in an antigen capture ELISA. This monoclonal antibody is not suitable for western blot (non-reducing unheated conditions). Detects DENV3 by FRNT.

Data

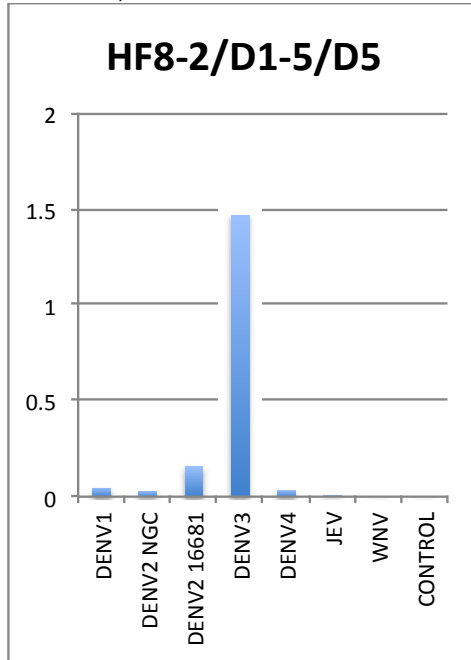


Assay steps :  
 Anti-mouse Ig coated well  
 Blocked with BSA  
 Monoclonal antibody  
 Antigen sample  
 Polyclonal anti-flavivirus antibody  
 Conjugate  
 Substrate

DE18 datasheet

Product name	Anti-DENV serotype 3 antibody, DE18.
Code no.	DE18
Clone ID	HF8-2/D1-5/D5
Description	DENV serotype 3 E glycoprotein specific mouse monoclonal antibody.
Immunogen	Recombinant DENV E protein.
Specificity	This monoclonal antibody reacts with a conformational epitope present on DENV3 E.
Isotype	IgG1, kappa.
Intended use	Research reagent.
Reagent provided	This product is supplied as cell culture supernatant and contains ProClin150.
Storage	Stable at 4°C.
Applications	This monoclonal antibody has been primarily used for the detection of DENV3 antigen in an antigen capture ELISA. This monoclonal antibody is not suitable for western blot (non-reducing unheated conditions) or FRNT.

Data

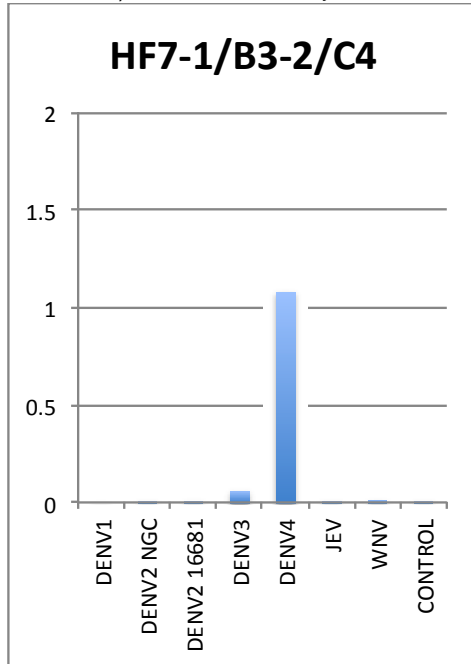


Assay steps :  
 Anti-mouse Ig coated well  
 Blocked with BSA  
 Monoclonal antibody  
 Antigen sample  
 Polyclonal anti-flavivirus antibody  
 Conjugate  
 Substrate

DE19 datasheet

Product name	Anti-DENV serotype 4 antibody, DE19.
Code no.	DE19
Clone ID	HF7-1/B3-2/C4
Description	DENV serotype 4 E glycoprotein specific mouse monoclonal antibody.
Immunogen	Recombinant DENV E protein.
Specificity	This monoclonal antibody reacts with a conformational epitope present on DENV4 E.
Isotype	IgG1, kappa.
Intended use	Research reagent.
Reagent provided	This product is supplied as cell culture supernatant and contains ProClin150.
Storage	Stable at 4°C.
Applications	This monoclonal antibody has been primarily used for the detection of DENV4 antigen in an antigen capture ELISA. This monoclonal antibody is not suitable for western blot (non-reducing unheated conditions). Does not work very well in FRNT.

Data

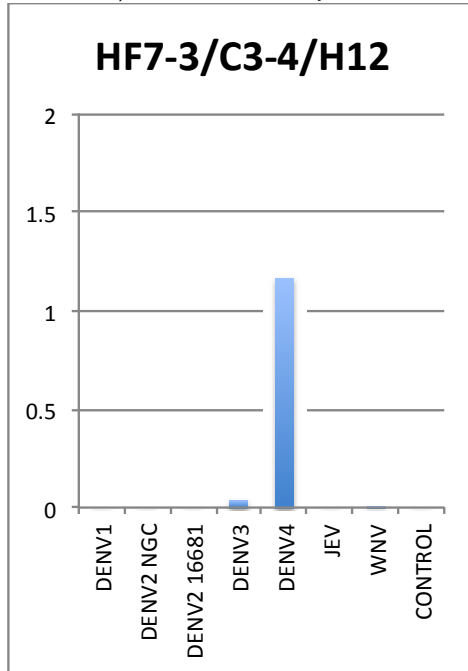


Assay steps :  
 Anti-mouse Ig coated well  
 Blocked with BSA  
 Monoclonal antibody  
 Antigen sample  
 Polyclonal anti-flavivirus antibody  
 Conjugate  
 Substrate

DE20 datasheet

Product name	Anti-DENV serotype 4 antibody, DE20.
Code no.	DE20
Clone ID	HF7-3/C3-4/H12
Description	DENV serotype 4 E glycoprotein specific mouse monoclonal antibody.
Immunogen	Recombinant DENV E protein.
Specificity	This monoclonal antibody reacts with a conformational epitope present on DENV4 E.
Isotype	IgG1, kappa.
Intended use	Research reagent.
Reagent provided	This product is supplied as cell culture supernatant and contains ProClin150.
Storage	Stable at 4°C.
Applications	This monoclonal antibody has been primarily used for the detection of DENV4 antigen in an antigen capture ELISA. This monoclonal antibody is not suitable for western blot (non-reducing unheated conditions). Detects DENV4 by FRNT.

Data



Assay steps :  
 Anti-mouse Ig coated well  
 Blocked with BSA  
 Monoclonal antibody  
 Antigen sample  
 Polyclonal anti-flavivirus antibody  
 Conjugate  
 Substrate