



NEWS & VIEWS

News & Views is published monthly – except for July and August by the Auxiliary for the Auxiliary, PO Box 4243, Lincoln, NE 68504. We are a proud member of the APWU Postal Press Association

Volume 33,
Issue 7

MARCH 2017

Color editions of News and Views may be viewed on the Auxiliary Website:
www.apwuauxiliary.org

Truth and Consequences

By: Kathy Danek, President

Never before in my lifetime have I witnessed such flirtation with the truth. It's not about one incident or event, but a constant day to day fact checking that has to be done on every communication coming from the White House and the office of the President. In reviewing the last couple of weeks, you would think we were still in the midst of a hard fought campaign, rather than looking forward and trying to find a way to bring our nation together to solve the problems we face for our future.

You might think that executive orders have made us safer, or are promises kept, and roll back things done in the past. But every president has used the executive order tool. What makes this so different and makes many uneasy are the cavalier explanations that have no basis in fact. Example – The largest electoral win since Reagan. Heck, any fifth grader can Google the electoral college numbers for the last 50 years and find that George H.W. Bush, Bill Clinton and Barack Obama all far exceeded the Electoral College win of 304 votes awarded to President Trump. You

can ask yourself, "WHY???" For me, it is the search for members in the House and Senate who will courageously challenge the falsehoods while putting our nation first and their party second.

I've long been a proponent that whatever I do have a basis in fact, look for compromise and serve the people I represent. In the Auxiliary, I am proud to represent each and every one of our members, our APWU families and retirees, and our Union. Our task as Auxiliary members must be to hold our elected officials accountable for the truth.

We have a lot of issues bubbling to the surface. Republicans in Congress are determined to eliminate the Affordable Care Act with no replacement plans. Taking health care away from 20 million people or making it totally unaffordable should never be an option. Think about the discussion – it's about the health pool. Translate that into preexisting conditions or use of health care as a child where you might have met your lifetime maximum in benefits, or your 23 just out of college and no full time job yet. Thank goodness you can stay on your parent or guardian policy until age 26. Talk about women's health care with access to family planning, mammograms, pap smears, and other cancer screenings that truly save lives. Under the ACA, many of those things are covered with minimal cost to us.

Or, let's talk about the discussions that propose

Continued on page 2



Inside this issue:	
President's Report continued	2
H.R. 756 - Postal Reform Kindness	3
Auxiliary Executive Board Visits Children, Inc.	4
Organizing Committee - Each One - Reach One	5
Ask Tina About the Health Plan	6
Highlights of Executive Board Meeting - Richmond, VA	7
2016-2018 Human Relations Project - Child, Inc. National Officer Listing	8

Truth and Consequences

President's Report - continued

changing Medicare to a voucher system. Include the discussion of tampering with the security provided by Social Security. Both Medicare and Social Security can be credited for keeping senior citizens out of poverty. It's not a luxurious existence by any means, but many of our seniors were able to put away a little nest egg, built around the impending social security monthly payments. That has helped them to enjoy their senior years and to manage financial disruptions like those experienced in 2008.

Our nation is responsible for our security, our troops serving in danger zones all across the world, and must deal with the immigration crisis that exists in many of our communities. Immigration has long been the great mantle of our nation. The Statue of Liberty has long welcomed our newcomers in the New York Harbor. Is it rhetoric; is it facts – just the facts? Maybe, but it is also human beings. You know people just like you and me. I am a second generation US Citizen. My father's parents immigrated here in the 1920's. And my dad was born here in the United States in 1926. I am proud of my heritage. Looking back at an immigration raid in 2006 in Grand Island NE where 2,000 children within their school system faced an uncertain future. That day as an immigration raid took place in a meat packing plant where 1,200 individuals were detained (out of 2,600 employees), children were in school. These children were US citizens, but had no way to return home because their parent was not there. A community which included parents, neighbors, school administrators, teachers and support staff opened their hearts to take care of the children.

I share this because the hard line discussion of issues

has consequences. And answers and actions have a trickle down effect. We need to make sure our legislators are looking at the effects of legislation. We need a House and a Senate that will take care of the American people. The current status has many on one side of the aisle blindly following, almost salivating at what they can do because they have all the power. An example would be the confirmation of the Education Secretary Betsy Devos. Our teachers unions gave countless examples of her lack of knowledge or experience with the public education 90% of our students receive. Yet, a 51 – 50 vote confirmed her. Hundreds of demonstrations took place all over our nation, and weak excuses were given by those voting to confirm her. Was the interest of us at home driving that vote, or the need to be part of a power hungry majority?

We live in very strange times. We as citizens have a responsibility that is broader than casting a vote. We must speak loudly, reengage our membership, develop relationships with legislators, and finally get involved. Your help is needed. Start today by writing a letter to your Senator and Representative. Introduce yourself and let them know you are watching. Arrange meetings with them when they come back to our states. Develop relationships with your school board, city council, mayor, state senators, and governors. We are a representative government, and we have the responsibility to remind them who they represent. Thank you for being a member in the Auxiliary. Our work is never easy, but our rewards will benefit many for decades to come.



**Our Deepest
Sympathy**
**to District 3 Coordinator Tina
Beaton and her family**
on the passing of Tina's father



HR 756 – Postal Reform – Not Perfect, But a Step in the Right Direction.

By: Kathy Danek

We all know the prefunding mandate has placed an undue burden on the USPS and their financial security. We also know that the USPS is not only a strong economic provider in our nation. They touch every household and every business six days each week. *“According to the APWU News Service, “The bill addresses two serious key issues of concern: the pre-funding mandate and increasing postage revenue. Judging by the criteria that this bill will move the Postal Service towards solid financial footing, and should not place any undue burden on active members and retirees, the APWU joins its sister postal unions in encouraging the adoption of H.R. 756.”*

‘This legislation is a necessary step to solving the disastrous pre-funding mandate that is dragging down the Postal Service,’ said APWU President Mark Dimondstein. ‘Postal reform has been a great concern to postal workers, the four postal unions, the USPS, commercial mailers and the American people for a long time. We are encouraged by the bipartisan effort to fix the financial problems currently facing the USPS while preserving good union jobs and public postal services.’”

Postal Reform will affect both active and retiree members and their families, especially on the health care front. Medicare integration is a major part of this bill, as well as changes in the FEHB plans that will be offered to our active and retiree members. Historically, 80% of our members already take Medicare A and B as their primary coverage at age 65, making their FEHB plan the secondary provider for health benefits. If adopted, Medicare eligible employees and their retirees will be enrolled in Medicare A, B and D. *“FEHB plans would be given access to discounted prescription drugs through an Employer Group Waiver Plan with Medicare Part D”*

Long term stability has long been a priority of the four postal unions. That stability should help protect our union jobs into the future. HR 756 is scheduled for mark up in the next couple of weeks. It was introduced in January 2016 and has bipartisan support from House Government Oversight Chairman Jason Chaffetz (R-UT), Ranking member Elijah Cummings (D-MD), Gerry Connolly (D-VA), Mark Meadows (R-NC), Stephen Lynch (D-MA) and Dennis Ross (R-FL).



Kindness

By: Joyce Tanguay, District 7 Coordinator

Parts of the following article are taken from the Parade section of the Sunday newspaper on January 1, 2017.

Let's Make 2017 the “Year of Being Kind”

Seems like we are in a bit of a kindness crisis these days. In fact, only 25% of Americans believe we're living in a kind society, according to a poll by Kindness USA. The good news is that kindness and opportunities to be kind are definitely out there. Kindness is an action word. You can be empathetic, respectful and compassionate while sitting on your couch but to be kind you have to get off your couch and do something. A couple suggestions: Say thanks by writing thank you notes. Keep it simple by doing one kind act a day like calling a friend to see how

they are doing. The power of kindness is that it just takes one person, one act. You don't need money or a ton of time. The benefits are happier, bigger hearts because kindness feels good. You will have better physical health with less anxiety and pain. We believe that kindness is contagious and good for us and that inspiring consequences really do



spiral when we do simple, compassionate acts for others without expecting anything back. With so much violence and hatred in this world many believe that kindness is one of the cures. So it's time to get off that couch and make someone's day a bit brighter by being kind. You'll feel better and so will they.

Auxiliary Executive Board Visits Children, Inc.

By: Joyce Tanguay & Bonnie Sevre

*The War on Poverty is the unofficial name for legislation first introduced by United States President Lyndon B. Johnson during his **State of the Union address** on January 8, 1964. This legislation was proposed by Johnson in response to a national poverty rate of around nineteen percent. (Source: Wikipedia)*



Renee Kube, Luis Bourdet and Shelly Callahan

The E-board met in Richmond VA on Feb. 25-26th. Before our board meeting we had a chance to visit the headquarters of Children, Inc., in nearby North Chesterfield, VA the focus of our human relations project for the next two years. We had an opportunity to meet with Shelly Callahan, Development Manager, Renee Kube, Director of U.S Programs and Luis Bourdet, Director of International

Programs. Renee has worked with Children Inc for over 30 years and shared a wealth of information. She talked about “food deserts”, which refers to poverty areas where there are no grocery stores. Not only does Children Inc. take part in backpack programs, they also see that other needs are met as well. For example, taking fruit baskets to schools, purchasing books for children as they learn to read, purchasing shoes, school supplies, and weather appropriate clothes for the children.

Sometimes a child might have a special need that would not be a part of the normal needs provided. Funds may be provided so that the child can participate in a special event, or receive a little extra help with some other need.

Because our focus is on U.S. Programs we learned that Children Inc is active in seven states (VA, WV, KY, MI, LA, AZ, NM) plus the District of Columbia. This program was started in 1964 at the time President Lyndon Johnson declared the “War on Poverty”. Rural Appalachia was the first area serviced by Children, Inc. Children were adopted into the program and provided with basic needs to

be able to attend school. The child was helped during his/her school years. As more funds have become available the project has expanded into other areas of the United States. Some of the areas being serviced are depressed cities like Detroit, Michigan and Washington, D.C. Children, Inc. is currently working on plans to move in to New Orleans to help children in this depressed city.

Children Inc. has been able make it possible for some children, at the age of 17, to apply for a limited number of scholarships. At this time over twenty have been able to complete their studies and thirteen are currently enrolled.

Along with sponsoring children, the program also accepts donations of books to be put in the schools. They also have “Underneath it All” drives where people donate underwear and socks to be distributed to children in need.

Of the funds raised 84-86% goes directly to the needs of the children they serve. The rest of the money is used for administrative costs which include finding areas of need, overseeing that the funds are used for the purpose intended, and there are minimal financial, administrative expenses.

The leaders of this organization are dedicated to helping stamp out poverty one child at a time!



Shelly Callahan, Development Director with Joyce Tanguay, Human Relations Chairman



Join the Auxiliary to the APWU

~ Each one – Reach one ~

We will place a ticket with your name on it in a drawing for each new member that you sign up. The drawing will be October 2017 at the All Craft Conference.

1st Prize \$250

2nd Prize \$100

Another **\$50 drawing** will be held for each member that joins or pays dues.

Who can join? Family, friends, retirees, and APWU members may join the Auxiliary to the APWU.

Why Join?

- ◇ Be a part of a team ~ a cause ~ a family
- ◇ To help make a difference in your community, politically and socially.
- ◇ Spread the word for our postal members about better postal jobs, better benefits, a better environment.
- ◇ Speak to our friends, family, community, and local/state government representatives about why the United States Postal Service is important to us all. It is in the United States Constitution because it is a service to our family, businesses (small and large), and our communities.



Mail to:

Auxiliary to the APWU
3038 Cloverdale Ct
Grand Junction, CO 81506

Or:

www.apwuauxiliary.org

And follow links to join or pay dues
National dues are \$10.00 for 2 years or
\$5.00 per member per year



Ask Tina? About the Health Plan



**Ready to make
the most of your
health plan?
Let's get started!**

The APWU Health Plan's Consumer Driven Option gives you more choices and control than ever before over your health care spending and saving. It also provides you with resources to help you make the most of your health plan.

DID YOU KNOW...

This health plan gives you freedom and flexibility. You can choose any doctor or hospital you want, but you'll save money when you choose within the network. Your preventive care is covered at 100 percent when you use a network doctor, and you'll enjoy lower premiums.

You have a Personal Care Account (PCA) to pay for your eligible medical expenses. APWU Health Plan funds your account: \$1,200 for self-only coverage and \$2,400 for self plus one/self and family coverage. This money is available to you right now!

Rally is designed to improve your health. This personalized health experience gives you clearly defined goals to help you move more, eat better and feel great. You'll earn a \$50 deposit in your PCA when you complete the Rally Health Survey (Health Risk Assessment) and an additional \$50 for each covered dependent age 18 or older who completes the survey.

Virtual Visits let you see and talk to a doctor without leaving home. Now you can connect with a doctor from your phone, tablet or computer without an appointment. It's an ideal choice for non-emergency conditions like a cough, ear infection, fever, pink eye, rash, stomach ache and more.

myuhc.com gives you access to all of your benefits information. This website offers everything you need to make better health care choices and manage your benefits.

You have instant access to your family's health information on the UnitedHealthcare Health4Me mobile app. No matter where you are, you can pull up your family's essential health information on this free app.

You can find out what a treatment will cost before you receive it with the cost estimator. The cost estimator shows you the estimated costs and what you'll owe for more than 500 procedures like MRIs, knee surgery or childbirth. Find the cost estimator on myuhc.com.

**This article is courtesy of UnitedHealthCare*



**WE'RE
HERE TO
SUPPORT
YOU**

We know that sometimes health care can be confusing. Customer Care is ready to help you manage your care and answer any questions.

Simply call
1-800-718-1299.

**Need to talk to a nurse?
Someone is standing by
24/7 to talk with you.**

(800) 222-2798

APWU
HEALTH PLAN
Together. Better Health.®

www.apwuhp.com

Auxiliary Executive Board Meeting - Richmond Virginia

By: Bonnie Sevre



Standing: Rebecca Kingsley, Bonnie Sevre, Kathy Danek, Joyce Tanguay. Sitting: Debra Stewart, Trisa Mannion. Executive Board members visiting Children, Inc. in North Chesterfield, Virginia. Missing - Pat Lewis and Clara Hill

The Auxiliary Executive Board met in Richmond, Virginia on Saturday and Sunday, February 25-26, 2017. On Friday, the 24th, those of us who had arrived in Richmond made a trip to Children, Inc., our 2016-2018 human relations project, located in nearby North Chesterfield, Virginia. We had an opportunity to meet with the Children, Inc. leadership team to hear more about the program (see article on page 4).

The board meeting convened on Saturday morning. Due to personal conflicts, Colette Phillippe, District 1 Coordinator and Tina Beaton, District 3 Coordinator were unable to attend. They were sorely missed but we understand that family comes first.

Our agenda was full. After reports of the general officers and coordinators there was discussion of the responsibilities of the coordinators at state conventions and seminars. The coordinators are at conventions to assist auxiliaries and answer questions they might have. In states that do not have active auxiliaries our job is to work to get auxiliary involvement. This leads us to the focus of the Organizing Committee. They have put together a campaign for "Each

One to Reach One". There will be a contest to increase membership which will run until the All Craft Conference in October. The details of the contest are on page 5 of this issue. The goal of this contest is to get more auxiliaries growing with active involvement. With the climate in Washington we need to get as many people involved as we can to fight to save the postal service as a public institution.

The Legislative, Political and COPA Committee discussed legislation that is currently in Congress. The following bills were discussed.

H.Res. 31 replaces H.Res. 54, and is about restoring the post office service standards in effect as of 7/1/2012. We support this H.Res.

H.R. 6278 – Promote Accountability and Government Efficiency Act. Vote NO! This bill if passed will be devastating to federal employees. Under this bill all new employees would be hired as AT WILL EMPLOYEES, in which an employee can be dismissed by an employer for any reason (that is, without having to establish "just cause" for termination), and without warning. When an employee is acknowledged as being hired "at will", courts deny the employee any claim for loss resulting from the dismissal. Also, this bill would place a limitation on official time and use of Government resources in carrying out union activities.

H.R. 756 – The APWU joined the three other postal unions in encouraging adoption of this bill. (See Kathy Danek's article on page 3)

Also discussed was the idea of postal banking. One of the major considerations for postal banking is the fact that the postal service has the only public or private infrastructure that can reach people in every American neighborhood.

We discussed COPA. When we are at conventions and seminars our goal is to sign up APWU members in COPA dues check-off, which ensures continual funds to our political action fund.

The Nilan Scholarship Committee reported that no one applied for the scholarship in 2016. **It was discussed and decided that the Nilan Scholarship would be suspended pending further review.** The board would appreciate any input on ways to improve the scholarship as we attend APWU functions.

The Auxiliary Constitution has been updated and printed. Copies were sent to state presidents. Also, the Auxiliary Handbook was reviewed and will be updated. The handbook contains a wealth of information on just about anything you would like to know about running your auxiliary so please check it out if you have not already done so!

Along with many laughs and enjoying our friends from across the country we had a very productive board meeting.

2016-2018 Human Relations Project

By: Joyce Tanguay - Human Relations Chair

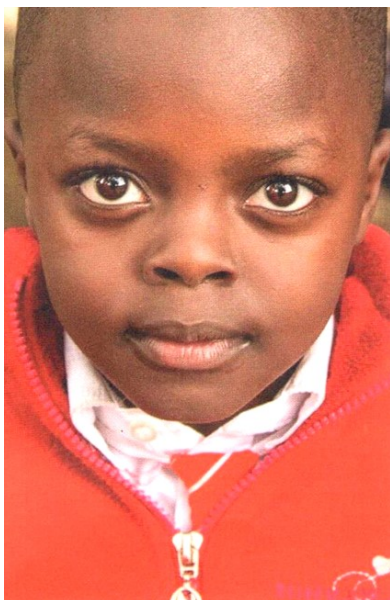
*Be true to yourself. Make each day a masterpiece.
Help others.*

Child Inc.

Thirteen million children live in poverty in the United States. The Mission of this program is to provide children with the hope, opportunity and education that will enable them to grow to contribute to their communities. Children, Inc was founded in 1964 and serves the physical, emotional and educational needs of children. This program also helps children with food, clothing, healthcare and education. Although it is both a U.S. and International program, the donations we receive will be used to sponsor children here in the United States only. Your donations will help break the cycle of poverty and give a child hope for a brighter tomorrow.

Please take the time to go to <https://childrenincorporated.org> for more testimonials and information. No donation is too small (or large) and checks may be made payable to *Auxiliary to the APWU* and sent to:

*Trisa Mannion, Treasurer
Auxiliary to the APWU
3038 Cloverdale Court
Grand Junction, CO 81506*



2016– 2018 National Officers

PRESIDENT Kathy Danek
402-464-8549 402-464-8557 (fax)
4261 Knox, Lincoln, NE 68504-1955
kmdanek@aol.com or kmdanek@apwuauxiliary.org

SECRETARY Patricia Lewis
804-644-3843 (fax/voice-office)
804-644-6454 (home)
1500 N 30 St, Richmond, VA 23223
netta15@aol.com

TREASURER Trisa Mannion
970-245-3912 (fax) 970-243-7706
3038 Cloverdale Ct
Grand Junction, CO 81506
tmaux@aol.com or tmannion@apwuauxiliary.org

LEGISLATIVE AIDE-EDITOR Bonnie Sevre
612-788-3440 612-889-4111 (cell)
2836 Highway 88
Minneapolis, MN, 55418-3243
bsaux@aol.com

DISTRICT 1 Colette Phillippe
406-453-6085
5600 57th Ave. SW,
Great Falls, MT 59404
AK, ID, MT, OR, WA, WY
cpauxdc1@aol.com

DISTRICT 2 Rebecca Kingsley
562-355-3308
PO Box 93686
City of Industry, CA 91715 -3686
AZ, CA, CO, HI, NM, NV, UT
rkingsley@apwuauxiliary.org

DISTRICT 3 Tina Beaton
816-786-5572
409 Belmont Dr.
Raymore, MO 64083
IA, KS, MO, MN, NE, ND, SD
tbeaton@apwuauxiliary.org

DISTRICT 4 Debra Stewart
817-534-9130 fax 817-534-2279
6400 Guilford, Fort Worth, TX 76119
AR, LA, MS, OK, TX
tycozz@aol.com

DISTRICT 5 VACANT
Please contact President Danek
IL, IN, KY, OH, MI, WV, WI

DISTRICT 6 Clara Hill
865-637-1867
2710 Waverly St
Knoxville TN 37921
AL, FL, GA, NC, SC, TN, VA
wavechill@att.net

DISTRICT 7 Joyce Tanguay
207-772-8521-
236 Westbrook Street
South Portland, ME 04106-3326
CT, DE, ME, MD, MA, NH, NJ, NY, PA, RI, VT
jetang@maine.rr.com

2017

