

SAFE INC.

YEAR 2024

ANNUAL REPORT 2024

SAFE AND FEAR FREE ENVIRONMENT INC

COVERING ACTIVITIES
JULY 2023 - JUNE 2024





A WORD FROM THE DIRECTOR

The COVID-19 pandemic, declared a national emergency in March 2020, disrupted operations nationwide. While SAFE remained open as an essential service, we adopted new safety protocols to continue providing critical shelter and services during an unprecedented time.

As restrictions eased, SAFE began its recovery with the support of FVPSA ARPA funding, which allowed us to provide rental and utility assistance, adapt services to meet evolving client needs, and reopen our shelter for in-person services. The pandemic's effects persist, with rising costs for food, fuel, and housing, stagnant wages, and job losses leaving many clients behind on rent and utilities.

FVPSA ARPA funds were a lifeline, supporting survivors through rental and utility assistance, cell phones, and data to maintain housing stability and access to services. In FY 2024, SAFE provided \$121,762.68 in rental assistance to 54 individuals, \$52,553.50 in utility assistance to 59 individuals, and \$31,016.84 in phones and data to 61 clients.

In April 2024, SAFE's primary funder, the Council on Domestic Violence & Sexual Assault (CDVSA), conducted a programmatic review in accordance with CDVSA monitoring policies. The review assessed grant administration, service delivery to crime victims, and provided technical assistance as needed. FVPSA ARPA, OVC Discretionary, General, and Prevention funding streams were reviewed. Ten areas for correction were identified and addressed, and CDVSA determined that SAFE is operating in compliance with federal rules and standards. CDVSA conducts a full on-site monitoring visit at least every three years, annual collaborative calls, and annual spot checks of payment data submissions.

FY 2024 was also a challenging year for staffing. SAFE attempted a co-management shelter model but returned to its traditional structure. While the shelter fully reopened, some activities, including the Spring Auction, have not yet resumed as operations continue to stabilize post-pandemic.

MARILYN CASTEEL
EXECUTIVE DIRECTOR

SAFE SERVICES

SAFE is committed to every person's right to have power over their own life and to make informed choices whether, when and how to seek or receive services that honor their dignity, sovereignty and sense of self-worth.

SAFE DIRECT SERVICES

SAFE provides direct services to victims of Domestic Violence, Sexual Assault, and Stalking.

ADVOCACY

Trained Advocates are available 24 hours a day 7 days a week to help victims of violence.

SHELTER

SAFE Operates a 16 bed shelter in Dillingham and one in King Salmon

SART

Sexual Assault Response Team coordinates response to victims of Sexual Assault. Safe provides advocacy.

CRISIS LINE

24 hour on site advocacy and crisis response line.

EMERGENCY TRANSPORTATION

Flight to Dillingham or King Salmon for shelter or SAR services from anywhere in our Bristol Bay service area or to other safe destination

LEGAL ADVOCACY

Help with protective orders, court accompaniment, navigating justice, and civil filings

VILLAGE ADVOCACY

Trained Advocates in King Salmon, Naknek, New Stuyahok, and other Bristol Bay villages.

SUPPORT GROUPS

SISTRS and village run support groups throughout Bristol Bay

SYSTEM AND INTERAGENCY ADVOCACY

Development of shared risk and protective factor response with service providers throughout the region and state. Collaborative meetings, trainings and events.

SUPPORTIVE SERVICES

ULLA'S clothing vouchers, Rental, Food, and Utility Assistance provided to clients,

YOUTH SERVICES

MYSPEACE youth wellness center in Dillingham. Lesson plans, Curriculum delivery, Lead On support



A scenic landscape featuring a calm lake in the middle ground, surrounded by dense green forests. In the background, rolling mountains are visible under a sky filled with large, white, fluffy clouds. The overall atmosphere is peaceful and natural.

75%

On Average of Clients who report
Domestic Violence as main
victimization.

20%

Services are provided to
people who identify as Male.

DIRECT SERVICES

Direct Services is the umbrella program of all of our core services provided directly to victims of violence.

Through the ARPA grant we were able to continue our housing stabilization program. This provided emergency rental assistance, Utility assistance and move in expenses including a deposit.

We started housing clients in the Village Council of New Stuyahok's shelter that was supported by SAFE and had a Village Advocate as staff to help clients.

We were able to hire a village advocate in Iliamna to provide services and consulted with Tribal Councils on shelter and providing services.

We continued upgrading the main Dillingham shelter and office building. We were able to replenish supplies. Making sure we had the essentials for our clients whether that needed to be mailed out or when they visited us.

We started the process for replacing our Alarm system and shelter security upgrades.

We were able to provide more legal services than ever with continuity in staffing in the Legal Advocacy position between two capable advocates.



What Really Matters

WHAT OUR CLIENTS SAY

I have somewhere to go, verses feeling trapped and hopeless.

I'm getting away from mental and emotional abuse

I am feeling good there was someone helped makes big difference good feeling to get on with my life and better able to deal with stress.

I am 11 days clean because I haven't been clean in a very long time.

Can live in my house now

How welcoming and kind the guests and staff were.

Thank you for letting me stay here.

That there is help when you most need it.

Dealing with DV, now trying to work on custody.
Making better decisions about my future





418

People received services from SAFE during FY24

92

On Average in FY24 Clients received safety checks and follow up calls a month.

148

on Average Crisis Calls received each month in FY 24

340

On Average of Shelter nights a month in FY 24. Includes Dillingham, King Salmon, New Stuyahok and other Safe arranged shelter.

OUTREACH AND EDUCATION

Myspace continued to be well staffed.

At the beginning of the year we had a BOAT at the Curyung Tribal Building. There was a large component of men attending almost a quarter of attendee's. This spurred a weekly mens group meeting.

Jim and Susan Labelle had a community night with discussions about the Boarding School Era of Alaskan history and the long lasting effects of that abuse.

Liz Sunnyboy also held a presentation on Grief and Healing in a traditional context.

Gregg and Brandie both worked with Alaska Pribilof Association to team teach Native Its Your Game health education in the Middle School.

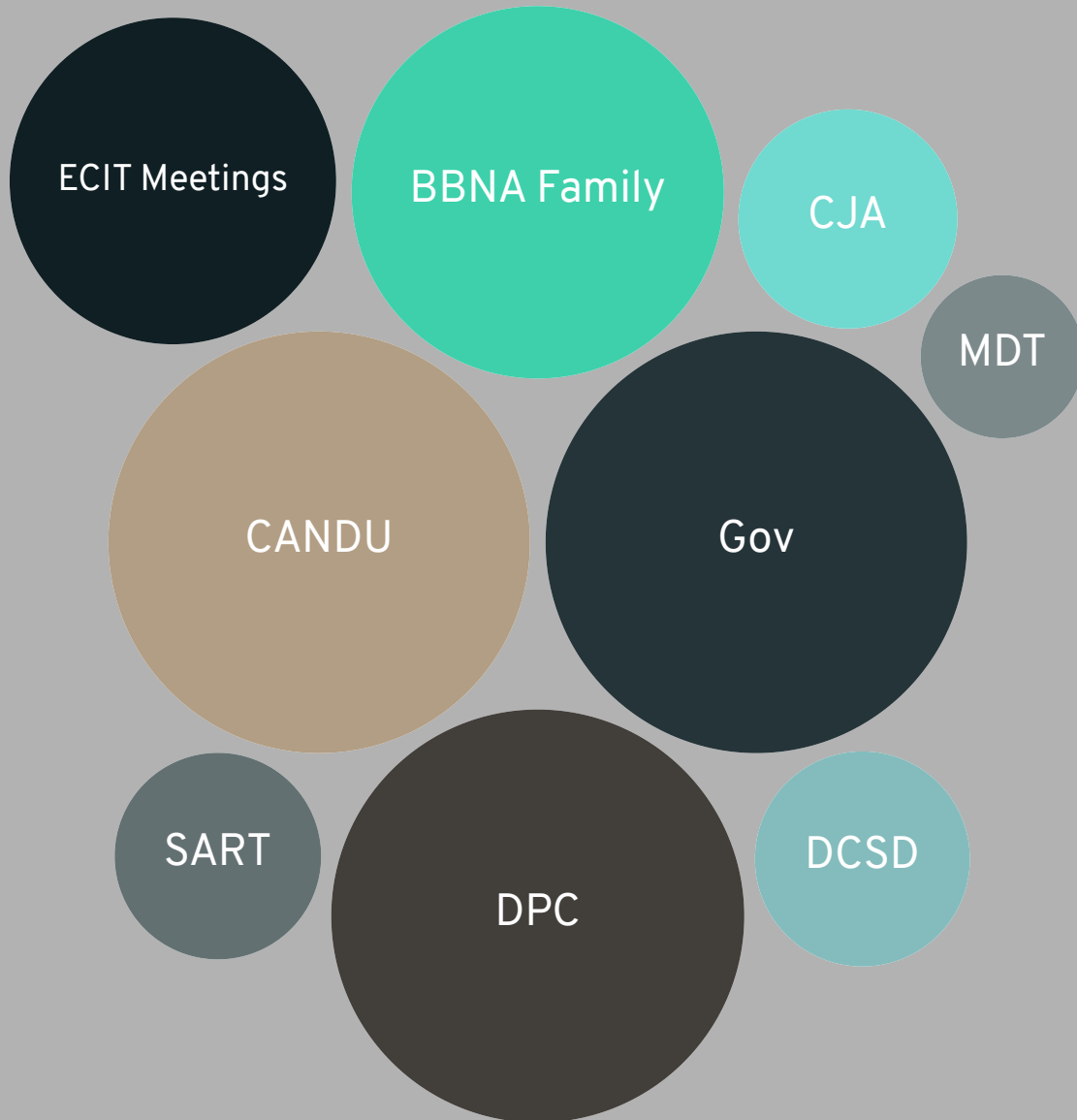
DCSD School Mug Ups became a regular event supported by the school and SAFE through the DPC.

The Mens group had a Mothers day appreciation event and had high visibility for respectful messaging towards women.

SAFE O and E also partnered with DCSD for youth events including Lead on youth leadership support and events including a mini grant from ANDVSA.



INTER-AGENCY COLLABORATION



SAFE SITS ON THE STEERING COMMITTEE , OR ADVISORY GROUP OR WORK GROUP OF MANY AGENCIES RELEVANT TO OUR MISSION OR THOSE OF OUR CLIENTS SOME OF THESE MEETINGS ARE HOSTED BY SAFE AND SOME ARE ATTENDED BY DESIGNEES.

Administration

Financial Audit

Financial Audit for FY 24 was performed by Foster and Company, LLC of Wasilla, Alaska

Safe and Fear-Free Environment, Inc. was determined to be a low-risk auditee

FINANCIAL STATEMENT FINDINGS

Safe and Fear-Free Environment, Inc., did not have any findings that relate to the financial statements that are required to be reported in accordance with GAGAS.

STATE AWARD FINDINGS AND QUESTIONED COSTS

Safe and Fear-Free Environment, Inc., did not have any state award findings or questioned costs.

SUMMARY OF PRIOR AUDIT FINDINGS

There were no financial statement findings in the prior year. There were no findings and questioned costs relating to major state award programs in the prior year.

Desk Review

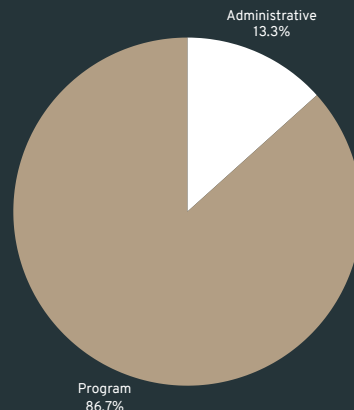
SAFE successfully performed a programmatic review conducted by the Council on Domestic Violence and Sexual Assault (CDVSA). Program Managers visited Dillingham in the spring of 2023 for an in depth review of grant funded programs. In FY 2024 SAFE worked on further implimentation of organizational best practices and updated grant terms and conditions.

IRS Form 990

Form 990 is an information return that most organizations claiming federal tax-exempt status must file yearly with the IRS. Below is a link to our filing for fiscal year ending in June 2023



Non Profit Rating



Rated a four star charity on Charity Navigator. Based on fiscal responsibility and accountability. For FY2024 SAFE's Program Expense Ratio was 86.4%. SAFE does not have an indirect rate and does not apply for de minimus indirect on grants. Meaning that public funds are used primarily for services and programs we deliver



PREVENTION

COMMUNITY CALENDAR

The Dillingham Prevention Coalition launched the Community Calendar.

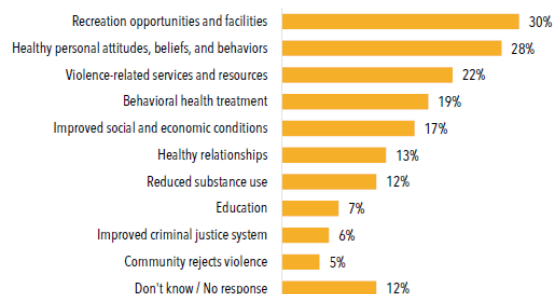
This is hosted on the website: [Dillinghamcommunity.squarespace.com](https://dillinghamcommunity.squarespace.com). For years people would say there is nothing to do or not know of what was going on and so sometimes attendance was low at events. This initiative hopes to fix this by becoming a resource for our community.

SUMMATIVE EVALUATION

SAFE DPC contracted with the Stellar Group to evaluate prevention efforts. This is part of the grant close out but also very helpful for members.

We applied for and were awarded a new grant for prevention efforts from the CDVSA. This is a three year grant that will support Myspace staffing, Along with Prevention Position. It also funds another CNA and further planning along with events.

"Can you think of anything that may make a person in Dillingham less likely to commit acts of violence? If so, what are those things?" (n=86)



Source: Dillingham Community Perceptions Survey, 2023.

FY2024

GENERAL OPERATING BUDGET

	CDVSA					OTHER GRANTS		LOCAL					
BUDGET CATAGORY	CDVSA FY23 General Funds	CDVSA ARPA Funds	CDVSA OVC	CDVSA Prev	CDVSA Total	RURAL DV	OTHER GRANT Total	FVP BBNA	BBEDC	ARPA BBNA	LOCAL Total	CASH	TOTAL PROJECT
100 PERSONAL SERVICES	392,670	0	128,166	71,913	592,749	283,757	283,757	306,322	17,924	0	324,246	123,138	1,278,890
200 TRAVEL	34,730	0	0	5,760	40,490	7,866	7,866	34,770	0	0	34,770	6,507	89,633
300 FACILITIES	0	0	88,380	0	88,380	0	0	44,700	0	24,900	69,600	10,000	167,980
400 COMMODITIE S (SUPPLIES)	28,650	35,380	0	4,500	68,530	0	0	289,435	0	20,775	310,210	5000	383,740
500 EQUIPMENT	0	14,620	0	0	14,620	0	0	0	0	30,600	30,600	6,360	51,580
600 OTHER CONTRACTU AL	43,950	0	64,075	9,107	117,132	3,183	3,183	97,000	0	248,725	345,725	20,145	486,185
TOTAL DIRECT	500,000	50,000	280,621	91,280	921,901	226,434	226,434	772,227	17,924	325,000	1,115,151	171,150	2,458,008

2024 BALANCE SHEET

SAFE Balance Sheet As of June 30, 2024

	Total
ASSETS	
Current Assets	
Bank Accounts	
1000 Wells Fargo Checking	508,708.13
1020 Wells Fargo Savings	227,015.64
1025 Wells Fargo Gaming	3,348.00
1032 Wells Fargo Single Signature	-198.29
1033 Investment	783,848.79
Total Bank Accounts	\$ 1,522,724.27
Accounts Receivable	
1110 Accounts Receivable	455,948.92
Total Accounts Receivable	\$ 455,948.92
Other Current Assets	
1030 Petty Cash	200.00
1040 Prepaid Expenses	29,806.00
1130 Pay Advance	0.00
1499 Loan Repayment	0.00
Employee Cash Advance	0.00
Payroll Refunds	0.00
Total Other Current Assets	\$ 30,006.00
Total Current Assets	\$ 2,008,679.19
Fixed Assets	
1500 Land, Buildings, Equipment	2,363,087.50
1550 Accumulated Depreciation	-1,708,217.96
Total Fixed Assets	\$ 654,869.54
TOTAL ASSETS	\$ 2,663,548.73
LIABILITIES AND EQUITY	
Liabilities	
Current Liabilities	
Accounts Payable	
2110 Accounts Payable	9,563.83
Total Accounts Payable	\$ 9,563.83
Credit Cards	
2001 Bank of America	16,096.38
2002 Wells Fargo - Two	0.00
Total Credit Cards	\$ 16,096.38
Other Current Liabilities	
2000 Unearned Revenue	0.00
2100 Payroll Liabilities	0.00
2111 Other Payables	5,562.90
2112 Health Insurance Liability	0.00
2113 Direct Deposit Payable	-0.01
2114 Payroll Clearing	1,122.03
2115 Accrued Payroll	43,219.87
2120 Accrued Vacation	27,178.99
2160 Health Insurance Liability	0.00
2210 FICA	0.00
2220 FWH	0.00
2230 ESC	3,762.90
2235 401(K) Plan	0.00
2300 Deferred Revenue	0.00
Payroll Tax Payable	0.00
Total Other Current Liabilities	\$ 80,846.68
Total Current Liabilities	\$ 106,506.89
Total Liabilities	\$ 106,506.89
Equity	
3000 Opening Bal Equity	0.00
3900 Fund Balance	2,664,447.35
Net Income	-107,405.51
Total Equity	\$ 2,557,041.84
TOTAL LIABILITIES AND EQUITY	\$ 2,663,548.73



SAFE BRISTOL BAY