



Contents

History.....	2
Care & Cleaning.....	4
Frequently Asked Questions.....	6
Stains & Specifications.....	8
Specifications Detail Drawings.....	11
Notes:.....	13
Warranty Instructions.....	14



History

In 1957, H. Clyde Evans founded Evans Cabinet Corporation in a barn on his father's farm with his brother, Preston, one table saw and a timeless philosophy . . . promise only what you can deliver and deliver what you promise. He began building single family kitchens but later ventured into the multi-family, Severe Use and military markets, specializing in sturdy cabinets that stood the test of time as well as his word.

While Lousue, his wife of fifty-five years, focused on raising their three children, she also fostered their business family, spearheading relief efforts during times of need for employees, substituting in the office during their illnesses, serving on the board of directors, serving as corporate secretary and even designing the corporate workspaces for optimal employee efficiency as well as comfort.



Many of those employees, part of a workforce that grew to over 200, have been with the company for decades, partnering in its growth to the standard bearer it is today in the multi-family construction industry. Clyde's childhood friend, M.L. Knight, was instrumental, leading the sales strategy that propelled Evans to the multi-family forefront. David Evans, Clyde 's cousin, managed production with a balanced approach that nurtured the company's needs as well as those of its employees. Although Mr. Evans has entered a semi-retired position, he has an extraordinarily capable executive in John Clem. John joined the company in 2009 and with over 30 years experience in administrative management, John, the former District Director for the Georgia Department of Labor, now serves as Chief Operating Officer.

With projects that range in size from twenty kitchens to twenty two hundred in locations ranging from Whidbey Island, Washington to Egypt to Okinawa, Japan, Evans Cabinet Corporation stands ready, as always, to fulfill your cabinetry needs and its founder's

philosophy. When Evans Cabinet Corporation promises something, Evans Cabinet Corporation delivers!

Bid to Delivery

A large percentage of our work is through the bid process. When we are awarded a job based on being the low bidder we immediately go to work designing architectural submittals of our standard cabinetry for your job. Prior to commencement of any work we require a completed credit application, pay and performance bond, approved cabinet stain submittal approval and if required an approved countertop color submittal. If necessary we can provide a “pilot” kitchen (as part of the total kitchens in contract) to ensure basic job requirements for color, construction and design. After these requirements are met we then begin supplying you the contractor with the remaining quantity of cabinets for your job on your schedule. We recognize and our main goal is that on time delivery is essential for our customers’ jobs to run smoothly and in compliance with their completion schedule.

Our Goal

The Evans Cabinet Corporation goal is to build the best product possible within the parameters of your job needs. Evans Cabinet Corporation built its reputation on a synthesis of reliability and adaptability. That rare combination propelled Evans Cabinet Corporation to the forefront of the Severe Use industry. In fact, Evans wrote the original government specification for Severe Use Cabinets. Evans maintains that flexibility to produce the product your job requires. With cabinetry lines from all-wood to particleboard, from Severe Use to environmentally friendly, the Evans Cabinet Corporation goal is to help you meet your goal.



Care & Cleaning

Dusting, Waxing & Polishing

Our recommendation is to use the mildest cleaning products possible such as warm soapy water with a damp soft cloth that is clean and free of dust or leftover particles. Dry the damp surface immediately following cleaning. Never use products with ammonia, silicone, petroleum or acid.



Products to Avoid

Avoid using harsh chemicals such as ammonia or bleach, abrasive cleaning products such as scouring pads/powders/chemicals. Solvents, petroleum based products, brushes or pads which may have leftover particles that will scratch the surfaces of cabinets should also be avoided. Silicone based cleaning or waxing products are discouraged as well.

Scratches & Damage

Deep scratches, cuts, discolorations and minor damage can be cosmetically enhanced (not permanent fixes) by using a touch up kit. These are available upon request and can be kept for use with minor blemishes.

Additional

1. Direct sunlight-over time direct sunlight may cause cabinetry to fade. In addition adding new cabinetry to existing kitchens

Grain

Because we specialize in all wood cabinetry the exposed surfaces of the face frame and doors will reveal natural variations in the wood grain. These are naturally occurring and only add to the beauty & personality of natural wood. If you have selected lighter colored stains then these are much for evident. Darker stains will hide these variations. These are not the result of manufacturing & they are also not covered as a warranty item. Some variation in color may result when stained.

may reveal fading of older cabinets that are currently installed.

2. Do not hang or drape wet cloth, fabrics, clothing or other damp items to doors or over counters that will touch the cabinets for any period of time. This moisture may cause peeling or discoloration or warping which will be permanent.
3. Avoid heat damage due to cooking utensils, pots and pans.
4. Grease spills, cooking fluids and similar spills should be avoided or cleaned immediately to avoid permanent damage.



Frequently Asked Questions

1. How do I place my first order?
 - The following are required prior to any order being placed in production:
 - Approved credit application
 - Pay and performance bond
 - Approved stain sample. These MUST be from actual wood block stain samples sent to you by Evans-colors on our website are not representative and may vary greatly from one monitor to another.
 - Approved countertop sample – as necessary for jobs requiring countertops.
 - Written authorization of units required in order of contractor's desired completion schedule.
2. What about stain & countertop colors?
 - When you receive your initial submittal package with our architectural drawings you will also receive samples for stain and countertops (contract dependent). We must have written approval of the colors for your job prior to cabinets being built.
3. What is the lead time on my order?
 - Lead times will vary but typically they are 3-4 weeks. If the colors, materials, or door styles are not standard and difficult to obtain lead times will increase. Holiday schedules make production/delivery schedules more difficult and as such advanced notification on the customers' part will help facilitate delivery.
4. When will I know when my cabinets will deliver?
 - Delivery schedules will be based on your installation requirements. Evans will consult with you on those requirements and you will be notified 1-2 weeks prior of intended delivery.
5. How many cabinets deliver on a truck?

- Generally up to approximately 20 kitchens will deliver on a truck depending on the size of cabinets as well as the size of the kitchen.
6. What happens if damages occur during delivery?
- All damages must be noted at the time of delivery when cabinetry is unloaded.



Stains & Specifications

COLOR	ID	Door Style	Wood
Autumn Brown	2572	All	All
Birchtone	1212	All	All
Boston	2511	All	All
Cherry	2226	All	All
Chestnut	1983	All	All
Dark Rose	0313	All	All
Espresso	1957	All	Poplar
Mahogany	1958	All	Birch, Maple, Poplar, Rubberwood
Natural	1776	All	Maple & Oak
Sunset	2039	All	All
Tuscany	3657	All	All
Wheat	648	All	All

*All refers to available door species-Birch, Poplar, Maple, Oak, Rubberwood

Standard All Wood Box

Finished Ends	1/2	Plywood
Unfinished Ends	1/2	Plywood
Finish		
Face Frames	3/4	Poplar, Oak, Maple
Doors & Drawers		All Wood Door Styles

Drawer Box		Dovetail
Drawer Sides	5/8	Pine
Drawer Bottoms	1/4	Plywood (Birch)
Base Bottoms	1/2	Plywood (Birch)
Backs	1/4	Plywood (Birch)
Wall Tops/Bottoms	1/2	Plywood (Birch)
Base Shelves	1/2	Plywood-Fixed-Edge Banded
Upper Shelves	1/2 3/4	Fixed-Plywood Edge Banded ADJ-Plywood Edge Banded
Drawer Runners		100lb Epoxy Runner
Toe Kicks	3/4	Pine
Hardware		Concealed

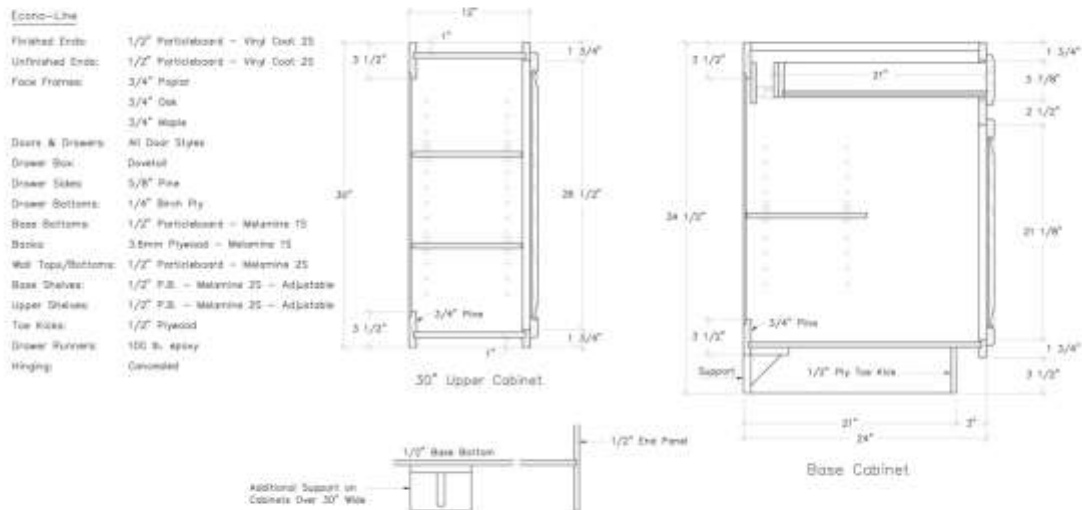
Severe Use Box

Finished Ends	1/2	Plywood (Exterior Grade Birch)
Unfinished Ends	1/2	Plywood (Exterior Grade Birch)
Finish		
Face Frames	3/4	Poplar
Doors & Drawers	3/4	Birch Plywood Slab w/reverse bevel- other door styles available. However, use of other doors invalidates the approved Severe Use/HUD certification.
Drawer Box		Dovetail
Drawer Sides	11/16	Pine
Drawer Bottoms	1/4	Plywood (Exterior Grade Birch)
Base Bottoms	1/2	Plywood (Exterior Grade Birch)
Backs	1/4	Plywood (Exterior Grade Birch)
Wall Tops/Bottoms	1/2	Plywood (Exterior Grade Birch)
Base Shelves	1/2	Plywood-Fixed Exterior Grade Birch
Upper Shelves	1/2	Plywood-Fixed (Exterior Grade Birch)
Drawer Runners		100lb Epoxy Runner
Toe Kicks	3/4	Pressure Treated-Black
Hardware		Wrap Around

Econ-Line Box

Finished Ends	1/2	PB Vinyl Coat 2S
Unfinished Ends	1/2	PB Vinyl Coat 2S
Finish		
Face Frames	3/4	Poplar, Oak, Maple
Door & Drawers		All Door Styles
Drawer Box		Dovetail
Drawer Sides	5/8	Pine
Drawer Bottoms	1/4	Plywood
Base Bottoms	1/2	PB Laminated Melamine 1S
Backs	3.6	Laminated Melamine 1S
Wall Tops/Bottoms	1/2	PB Laminated Melamine 2S
Base Shelves	1/2	PB Laminated Melamine 2S-ADJ
Upper Shelves	1/2	PB Laminated Melamine 2S-ADJ
Drawer Runners		100lb Epoxy Runner
Toe Kicks	1/2	Plywood

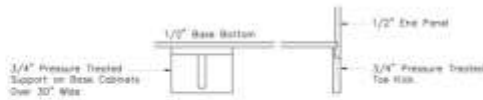
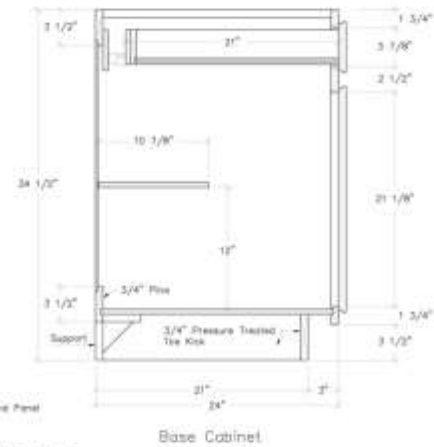
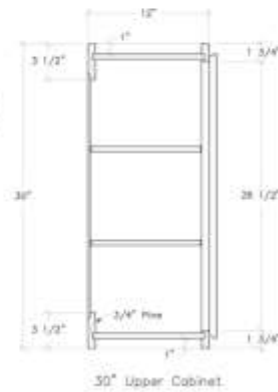
Specifications Detail Drawings



Severe Use

- Finished Ends: 1/2" Birch Ply *
- Unfinished Ends: 1/2" Birch Ply *
- Face Frames: 3/4" Poplar
- Doors: 3/4" Birch Ply * with reverse bevel
- Drawer Fronts: 3/4" Birch Ply * with reverse bevel
- Drawer Box: Dovetail
- Drawer Sides: 11/16" Pine
- Drawer Bottoms: 1/4" Birch Ply *
- Base Bottoms: 1/2" Birch Ply *
- Backs: 1/4" Birch Ply *
- Wall Tops/Bottoms: 1/2" Birch Ply *
- Base Shelves: 1/2" Birch Ply * - Fixed - CB
- Upper Shelves: 1/2" Birch Ply * - Fixed - CB
- Toe Kicks: 3/4" Pressure Treated Fir-Block
- Drawer Runners: 100 lb. epoxy
- Hinging: Wrap Around

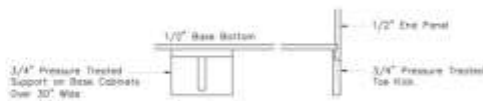
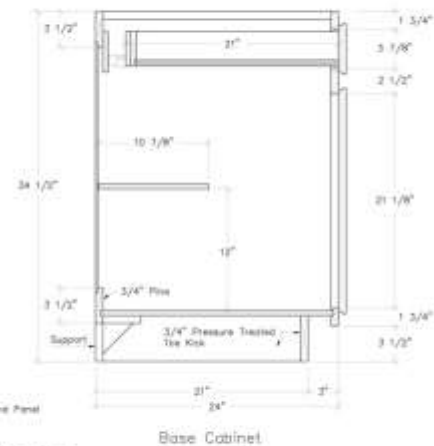
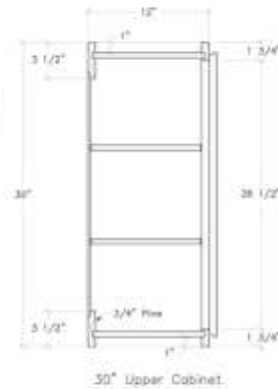
* - Exterior Grade Plywood



Severe Use

- Finished Ends: 1/2" Birch Ply *
- Unfinished Ends: 1/2" Birch Ply *
- Face Frames: 3/4" Poplar
- Doors: 3/4" Birch Ply * with reverse bevel
- Drawer Fronts: 3/4" Birch Ply * with reverse bevel
- Drawer Box: Dovetail
- Drawer Sides: 11/16" Pine
- Drawer Bottoms: 1/4" Birch Ply *
- Base Bottoms: 1/2" Birch Ply *
- Backs: 1/4" Birch Ply *
- Wall Tops/Bottoms: 1/2" Birch Ply *
- Base Shelves: 1/2" Birch Ply * - Fixed - CB
- Upper Shelves: 1/2" Birch Ply * - Fixed - CB
- Toe Kicks: 3/4" Pressure Treated Fir-Block
- Drawer Runners: 100 lb. epoxy
- Hinging: Wrap Around

* - Exterior Grade Plywood





Notes:

*****Specific components subject to change due to market fluctuations.**

*****Stain colors shown on our site may have slight variations due to your monitor settings. Orders will only be approved after receipt and acceptance of physical samples provided by Evans to your purchasing agent.**



*****All specifications shown are our "standard" built specifications. We will be happy to custom build your project to YOUR specifications. If you do not see materials or hardware on our standard list it does not mean we don't build it or can't get it for you. Please ask us for the availability of your job requirements. We specialize in creating what you want, when you want it.**



Warranty Instructions

Project Name: _____

Project Address: _____

Owner Name: _____

Owner Address: _____

Date of Commencement: _____

Signature:

THIS WARRANTY IS THE EXCLUSIVE WARRANTY OF EVANS CABINET CORPORATION, INC. EVANS CABINET CORPORATION, INC., DISCLAIMS ALL OTHER WARRANTIES, EXPRESSED OR IMPLIED, INCLUDING THE WARRANTIES OF MERCHANTABILITY AND OF FITNESS FOR A PARTICULAR PURPOSE.

To submit a warranty claim, the original consumer purchaser must contact the EVANS dealer or distributor where the product was purchased. A copy of the original dated sales receipt must be presented as proof of purchase. The EVANS dealer or distributor will contact the EVANS sales representative who will inspect the product and submit his/her findings to the company for response.

Should defects in material or workmanship exist during this warranty period, EVANS will elect at its discretion to either repair or replace free of charge the defective material or component, excluding labor costs. This warranty covers only parts and materials supplied by EVANS, and does NOT cover costs for removal or reinstallation of cabinets, countertops, plumbing fixtures, appliances or related materials, or labor costs. Natural and environmental factors will affect cabinet products over time; therefore, EVANS cannot be held responsible for replacement product that may not exactly color-match installed product.

EVANS warranties apply only to product used in single-family, non-rental, non-commercial residences. This warranty does not cover damage from misuse, abuse, neglect, improper storage, defects caused by installation or storage or transportation, moisture or heat-related damage, normal wear and tear, or acts of God.

Note: This warranty covers EVANS CABINET CORPORATION product purchased on or after July 1, 2006

Cabinets manufactured by EVANS CABINET CORPORATION, Inc., are warranted to be free from defects in material and workmanship under normal use to the original consumer purchaser for a period of one year from the date of purchase. This warranty is not transferable to subsequent owners. Unfinished product is not covered under this warranty.

Most EVANS cabinet doors are made using solid wood. These doors are manufactured to perform well in a variety of conditions if properly stored, handled and installed. All wood products are designed and intended for use in controlled interior applications only. Any solid wood product will respond adversely to extreme conditions—such as very low or high humidity conditions. Effects of the natural expansion and contraction of the wood may be visible and is not considered a reason for replacement. Solid wood doors must cycle once through all seasonal changes before any requests for replacement will be considered. Mitered doors joints are especially subject to movement under these extreme conditions. Gaps that may develop in door joints due to these conditions are not subject to replacement under this warranty.



All drawer guides and hinges are warranted by the manufacturer to be free from defects in material and workmanship for as long as the original consumer purchaser owns the home where installed. These warranties are not transferable to subsequent owners.