

# KF Fittings

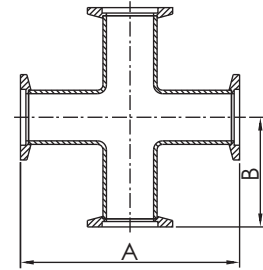
## KF 4-WAY CROSSES

\*Material: SS 304L

\*Tube Finish: Bead Blast



Part Number	Flange Size	A	B
KF-4C-10	KF10	63.50	31.75
KF-4C-16	KF16	58.40	29.20
KF-4C-16-1	KF16	80.00	40.00
KF-4C-25	KF25	100.00	50.00
KF-4C-25-1	KF25	102.80	51.40
KF-4C-40	KF40	122.00	61.00
KF-4C-40-1	KF40	130.00	65.00
KF-4C-50	KF50	140.00	70.00
KF-4C-50-1	KF50	160.00	80.00



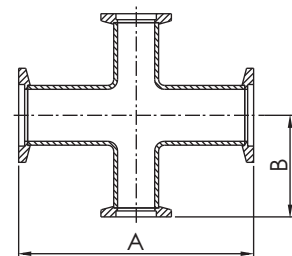
## KF REDUCING 4-WAY CROSSES

\*Material: SS 304L

\*Tube Finish: Bead Blast



Part Number	Flange Size	A	B
KF-4RC-25x16	KF25/KF16	100.00	43.20
KF-4RC-25x16-1	KF25/KF16	103.12	32.26
KF-4RC-40x16	KF40/KF16	121.92	38.86
KF-4RC-40x16-1	KF40/KF16	130.00	49.50
KF-4RC-40x25	KF40/KF25	121.92	57.91
KF-4RC-40x25-1	KF40/KF25	130.00	56.40
KF-4RC-50x16	KF50/KF16	140.00	55.90
KF-4RC-50x16-1	KF50/KF16	160.02	45.21
KF-4RC-50x25	KF50/KF25	140.00	62.70
KF-4RC-50x40	KF50/KF40	140.00	71.40
KF-4RC-50x40-1	KF50/KF40	160.02	67.31



**K F  
DN**

\*Note: SS 316L Material Available on Request.

\*Note: Polished and Electro- Polished Tube Finishes Available on Request.

# KF Fittings

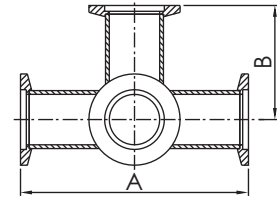


## KF 5-WAY CROSSES

\*Material: SS 304L

\*Tube Finish: Bead Blast

Part Number	Flange Size	A	B
KF-5C-16	KF16	80.00	40.00
KF-5C-25	KF25	100.00	50.00
KF-5C-40	KF40	130.00	65.00
KF-5C-50	KF50	140.00	70.00



**K F  
DN**

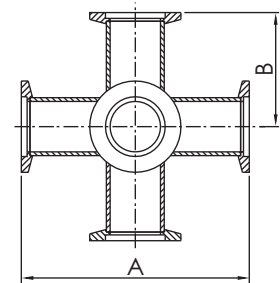


## KF 6-WAY CROSSES

\*Material: SS 304L

\*Tube Finish: Bead Blast

Part Number	Flange Size	A	B
KF-6C-16	KF16	80.00	40.00
KF-6C-25	KF25	100.00	50.00
KF-6C-40	KF40	130.00	65.00
KF-6C-50	KF50	140.00	70.00



\*Note: SS 316L Material Available on Request.

\*Note: Polished and Electro- Polished Tube Finishes Available on Request.