

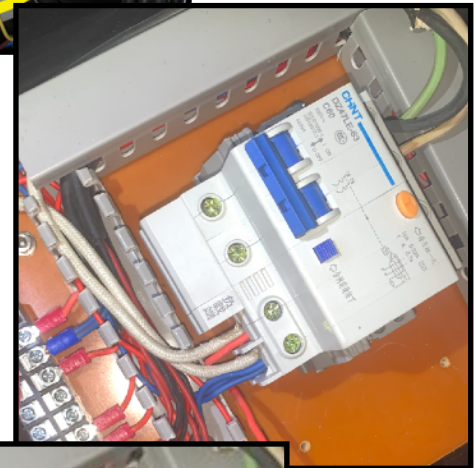
ISSUES WITH ELECTRIC BC ROASTERS CIRCUIT BREAKERS TRIPPING OFF

IF YOUR **CIRCUIT BREAKER TRIPS OFF** DURING A ROAST THERE ARE THINGS YOU CAN DO TO FIND IF THERE IS A MAJOR ISSUE OR JUST A MINOR CONCERN.

1. IF YOUR CIRCUIT BREAKER ON MACHINE TRIPS OFF YOUR MANUAL SHOWS YOU WHERE AND HOW TO RESET IT. (SEE ALSO PICTURE) IF YOU NEED TO TEST YOUR CIRCUIT BREAKER SEE THE PDF ON THAT SUBJECT.
2. IF AFTER TURNING BREAKER BACK ON IT **IMMEDIATELY TRIPS WHEN ROASTER IS PLUGGED IN** THEN LIKELY YOU HAVE AN ISSUE WITH ONE OR MORE HEAT TUBES THAT HAVE SHORTED AND NEED REPLACED. (HEAT ELEMENTS OR HEAT TUBES ON ELECTRIC ROASTERS LAST ON AVERAGE 2-4 YEARS & THEN SHOULD BE REPLACED)
3. IF ROASTER BREAKER TRIPS ONLY WHEN TURNING ON THE POWER BUTTON IT MAY BE A MOTOR ON ROASTER THAT HAS SHORTED.



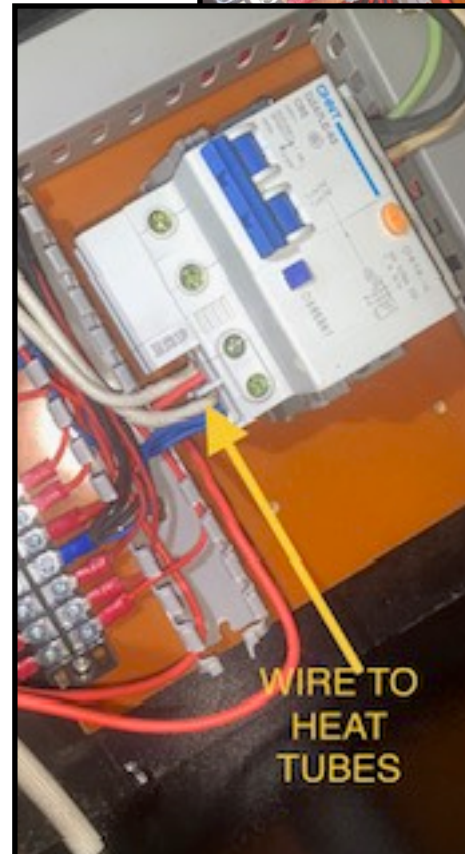
1.



2.

IF BREAKER TRIPS OFF AS SOON AS ROASTER IS PLUGGED INTO POWER EVEN IF POWER BUTTON IS OFF THEN LIKELY THERE IS A **SHORT IN ONE OR MORE OF YOUR HEAT ELEMENTS** (ALSO CALLED HEAT TUBES)

- A. IF THIS IS THE CASE THEN YOU SHOULD UNPLUG ROASTER FROM ALL POWER.
- B. OPEN PANEL OR REMOVE HOUSING TO GET TO BREAKER AND TAKE PICTURES IN DETAIL BEFORE YOU EVER REMOVE ANY WIRES OR PARTS.
- C. NEXT REMOVE THE WIRE SHOWN IN PICTURE AND CAP IT OR COVER LOOSE END WITH ELECTRICAL TAPE TO AVOID A SHORT.
- D. THEN CAREFULLY PLUG ROASTER INTO POWER. IF ROASTER IS PLUGGED INTO POWER AND OFF YET BREAKER STAYS ON THEN ISSUE IS WITH EITHER A BAD HEAT TUBE(S) OR WIRES BETWEEN HEAT TUBES AND SHOULD BE REPLACED.
- E. SEE PICTURE 'E' ON HOW TO CHECK WIRING TO EACH HEAT TUBE FOR WEAR.



2.E

IF ALL WIRES LEADING TO HEAT TUBES AND FROM EACH HEAT TUBE TO THE OTHER LOOKS GOOD THEN YOU WILL NEED TO DO A **'PROCESS OF ELIMINATION'** BY REMOVING ONE WIRE AT A TIME FROM EACH HEAT TUBE STARTING FROM LEFT TO RIGHT AND THEN PLUGGING UNIT IN UNTIL YOU FIND THE DEFECTIVE HEAT TUBE. (NOTE: IF ROASTER IS OVER 2-3 YEARS OLD YOU MAY DECIDE TO REPLACE EACH HEAT TUBE AS THE AVERAGE LIFE OF A HEAT TUBE IS 2-4 YEARS)

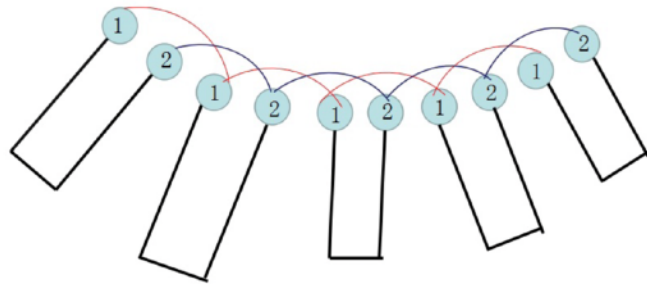


3.

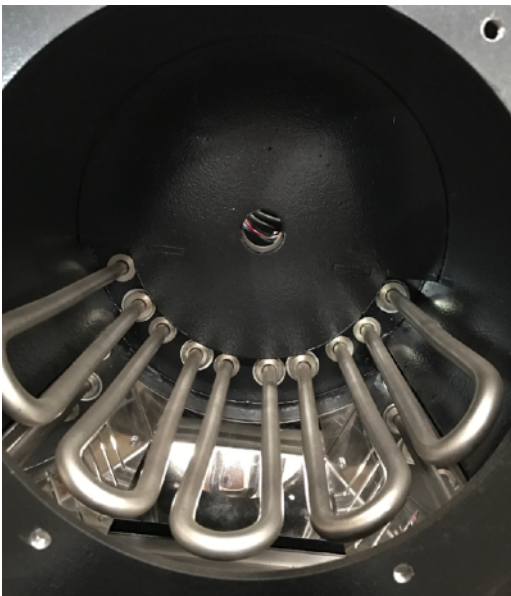
IF ISSUE IS NOT HEAT TUBE THEN LIKELY CIRCUIT BREAKER ON MACHINE WILL EITHER TRIP OFF ONCE POWER IS TURNED ON OR IN SOME CASES ONLY WHEN ONE OF THE MOTORS OR THE LAMP IS TURNED ON.

IF THAT IS THE CASE YOU WILL NEED TO TURN ALL MOTORS AND LAMP OFF AND THEN TURN ONE ON AT A TIME TO FIND WHICH PART IS SHORTED AND REPLACE THAT PART

WIRING SCHEMATICS



INSIDE LOOK AT HEAT TUBES



OUTSIDE TERMINALS



ISSUES WITH ELECTRIC BC ROASTERS CIRCUIT BREAKERS TRIPPING OFF

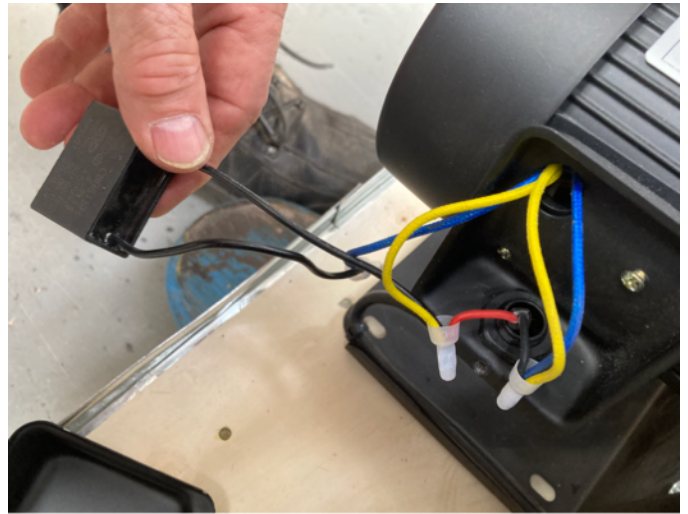
4.

IF SHORT IS IN A MOTOR OR PART:

IF SHORT IS IN A PART AND YOU CANNOT DETERMINE WHICH PART BY TURNING OFF POWER EITHER ON THE CONTROL PANEL OR AT THE DRUM MOTOR SPEED CONTROLLER THEN YOU MAY NEED TO DISCONNECT WIRING OF EACH PART UNTIL YOU FINE SHORT. SEE PICTURES ON HOW TO DO THIS ON VARIOUS PARTS.

OPEN WIRE BOX ON COOLING TRAY FAN, TAKE PICTURES AND DISCONNECT ONE OF THE HOT WIRES (RED OR BLACK WIRE)

ALSO THE LAMP WIRE RUNS FROM THE MAIN POWER TO BOTH LAMP & COOLING TRAY FAN SO YOU MAY NEED TO DISCONNECT ITS WIRE (ONE AT A TIME)

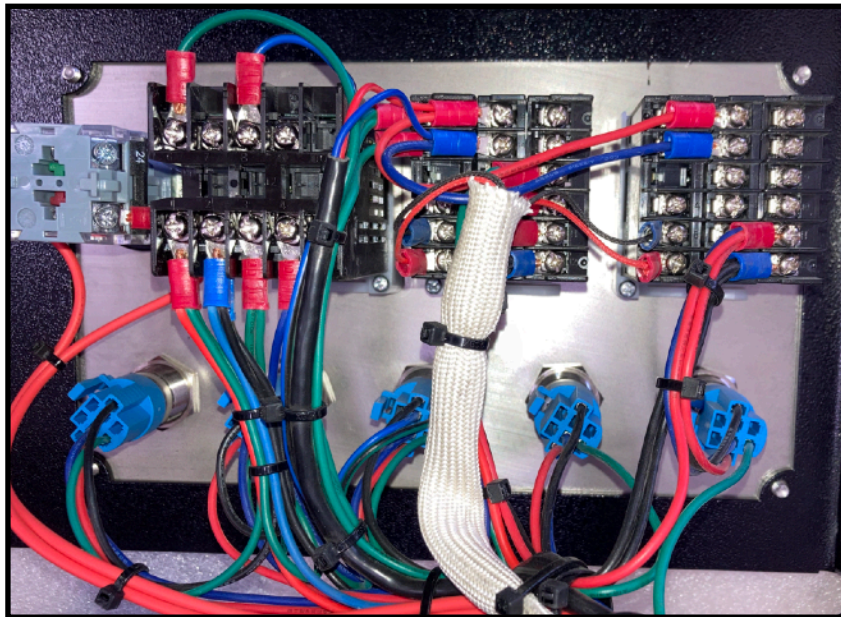


5.

IN A RARE CASE ISSUE COULD BE A LOOSE OR FRAYED WIRE ON CONTROL PANEL

OPEN PANEL AND CHECK FOR LOOSE OR FRAYED WIRES:

INSIDE CONTROL PANEL



IF YOU NEED FURTHER HELP SEND YOUR ACCOUNT # AND DETAILS, PICTURES & VIDEO CLIPS TO:

TECH@BUCKEYECOFFEE.COM

FREE EMAIL TECH SUPPORT