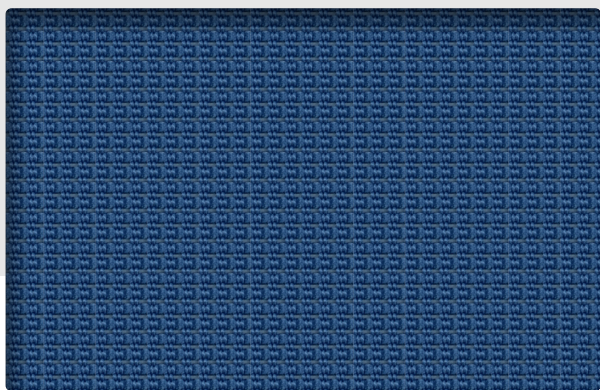
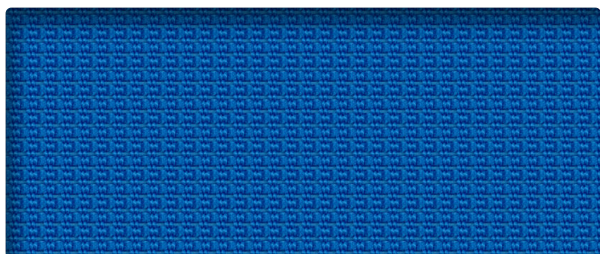


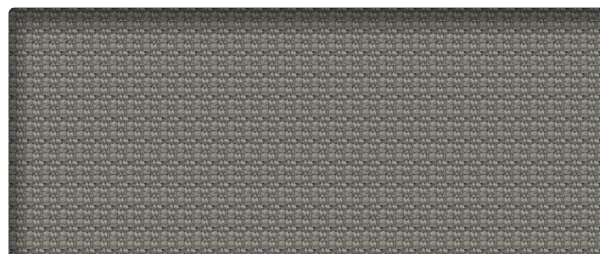
ACE
VTMM



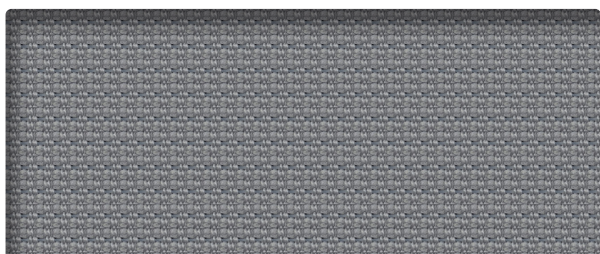
MC
OCEAN



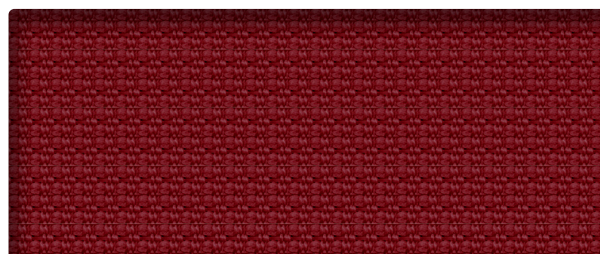
ME
ÉLECTRIQUE / ELECTRIC



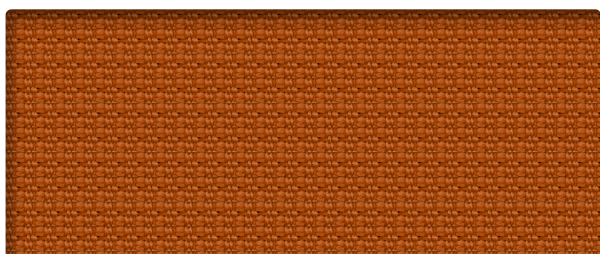
MK
NICKEL



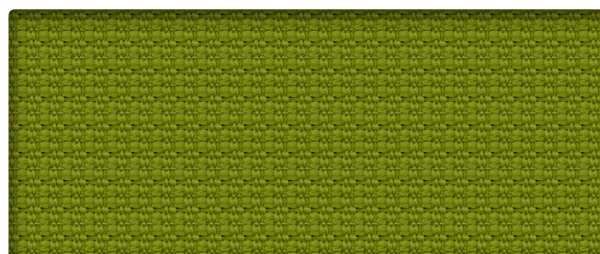
MG
GRISE / GREY



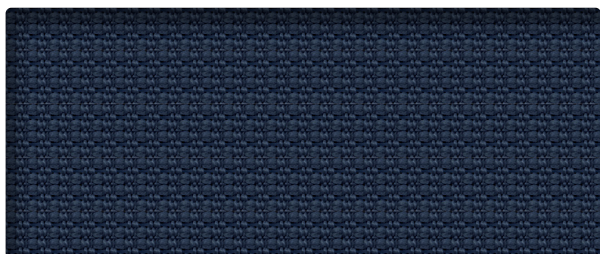
MR
ROUGE / RED



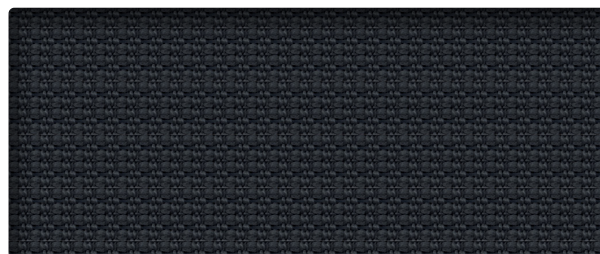
MO
ORANGE



MV
VERTE / GREEN



MM
MARINE / NAVY



MN
NOIRE / BLACK

INFORMATION TECHNIQUE

Patron - largeur	Composition	Abrasion (D.F.)	Poids	Résistance à la lumière	Inflammabilité
BO101 - 66"	100 % polyester	100 000	551g / Y	4.5 AATCC 16:2004, OPTION 1, CARBON-ARC-LAMP,GRAY SCALE / 100 HOURS	Pass CALIFORNIA TECHNICAL BULLETIN 117 SECTIONE (2000)

TECHNICAL INFORMATION

Pattern - Width	Composition	Abrasion (D.F.)	Weight	Lightfastness	Flammability
BO101 - 66"	100 % polyester	100 000	474g / Y	4.5 AATCC 16:2004, OPTION 1, CARBON-ARC-LAMP,GRAY SCALE / 100 HOURS	Pass CALIFORNIA TECHNICAL BULLETIN 117 SECTIONE (2000)



10871, avenue Salk
Montréal-Nord
(Québec) Canada
H1G 6M7

bouty.com



3450, 1re Rue
Saint-Hubert
(Québec) Canada
J3Y 8Y5

adi-artdesign.com