

MAP TO CRYSTAL EXECUTIVE

Here's your map to becoming a Crystal Executive. Fill in your new team members' names. To become a Crystal Executive, you need to personally help at least five people join on each team leg (right and left), then help at least five individuals on each leg become Consultants within 180 days of becoming an Isagenix Independent Associate.

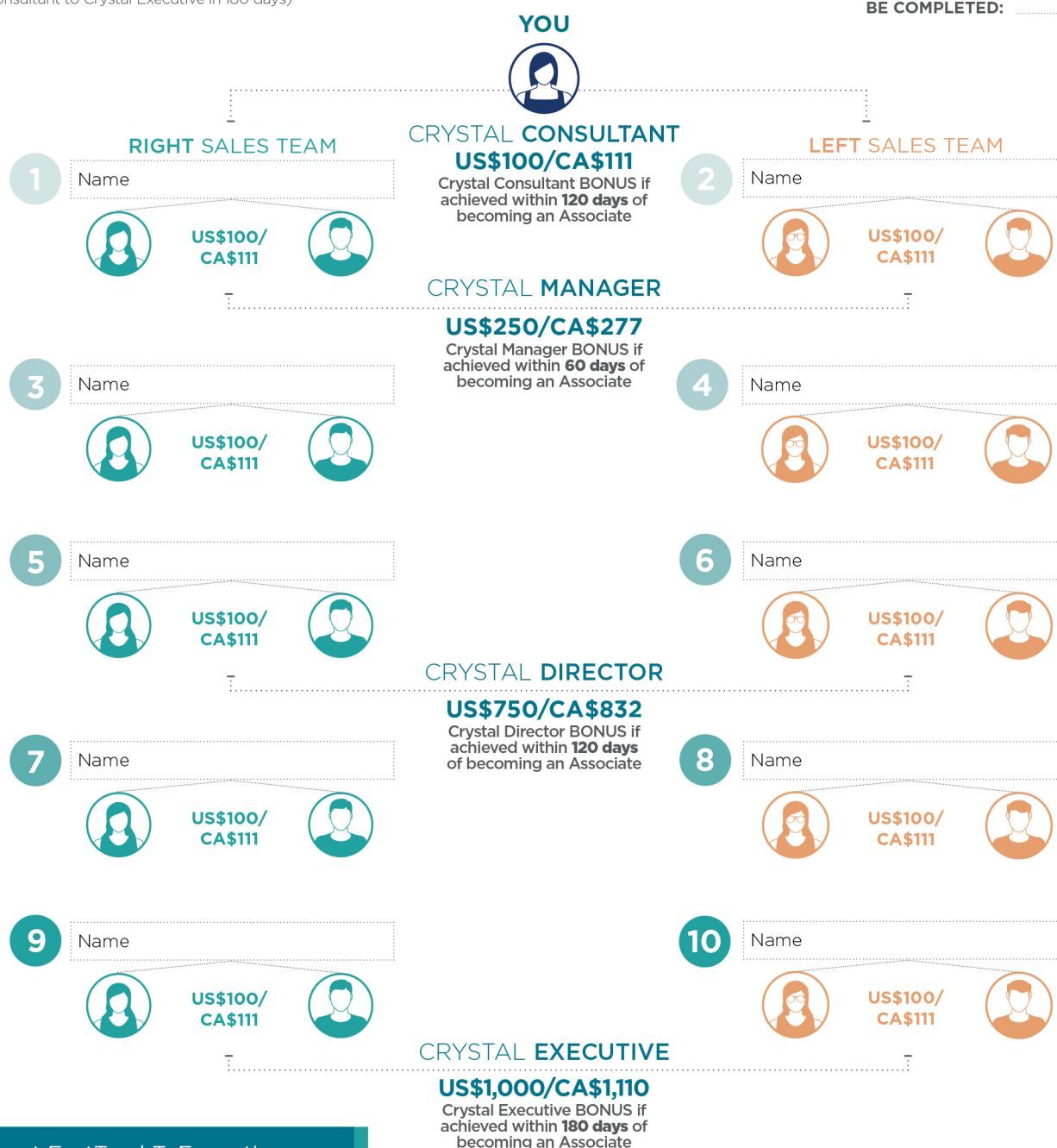
- US\$100/CA\$111**
 - + US\$250/CA\$277**
 - + US\$750/CA\$832**
 - + US\$1,000/CA\$1,110**
 - + US\$2,000/CA\$2,220**
- Crystal Consultant Bonus (achieve within 30 days of becoming an Associate)
 Crystal Manager bonus (achieve within 60 days of becoming an Associate)
 Crystal Director bonus (achieve within 120 days of becoming an Associate)
 Crystal Executive bonus (achieve within 180 days of becoming an Associate)
 Consultant Development bonus (\$100 for each Personally Enrolled Consultant)
 (Maximum 20)



= Up to **US\$4,100/CA\$4,550** in bonus money!*

(Crystal Consultant to Crystal Executive in 180 days)

GOAL DATE TO BE COMPLETED: _____



Learn more at FastTrackToExecutive.com.

All dollar amounts are shown in USD/CAD. Local amounts may be subject to the Isagenix Foreign Exchange Policy. The specific market values are calculated using the Foreign Exchange Multiplier. To calculate your market's equivalent, simply multiply the U.S. amount shown by the applicable Foreign Exchange Multiplier for that specific market. This value is subject to change every quarter based on published exchange rates and will be valid for the following quarter.

*For illustration purposes only. The amounts depicted here reflect the maximum earnings available assuming all conditions are met and are not projections or guarantees. Isagenix does not guarantee any amount of earnings. Associates participating in the Crystal Challenge outside of the 180-day join date period do not qualify for the US\$1,000/CA\$1,110 Crystal Executive Bonus. For qualifying Associates, the US\$4,100/CA\$4,550 bonus can only be achieved if Crystal Consultant is achieved within 30 days of becoming an Associate, Crystal Manager is achieved within 60 days of becoming an Associate, Crystal Director is achieved within 120 days of becoming an Associate, and Crystal Executive is achieved within 180 days of becoming an Associate.