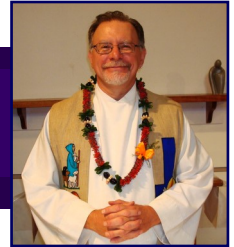


April 2016

Together We Are The Church



Christ Lutheran Church Newsletter

Aloha Kakou,

A blessed and joyous Easter to all. I've been thinking much lately about Cross and Resurrection. The two go together as part of one dramatic story of God in Christ's identification with broken, lost and sinful humanity and Jesus' representation to God of our plight. It is a story of loss and recovery, death and resurrection, betrayal and forgiveness, hopelessness and redemption.

Last Sunday, Easter Sunday, I changed up the ending of my Keiki Story – from "...and they lived ... happily ever after" to "...and they lived ... joyfully ever after." Joy is promised in scripture, repeatedly. Happiness is rarely, if ever – and I can't think of one place it is – offered.

Happiness cannot comprehend Cross, that is, loss, brokenness or betrayal. It is what I call "cheery, cheesy optimism." It is pervasive and insidious throughout our culture.

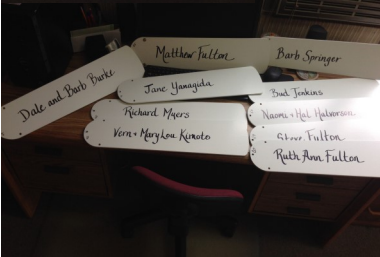
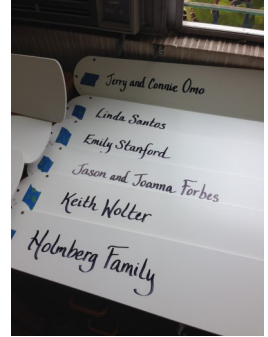
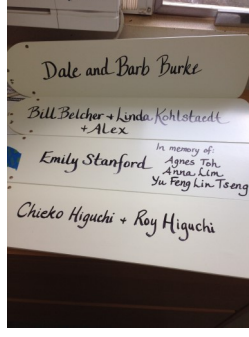
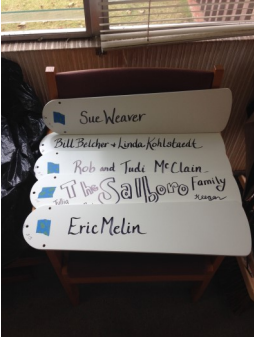
Joy, on the other hand, can speak to the deep uncertainty and ambiguity of our busy, hectic, and stress-filled lives. Joy is a kind of delight, somber and sober, yet determined and deep. A delight in life, even in the midst of death, of hope in the midst of despair, of faith in the midst of doubt. Joy is what Christ offers us in the Cross and Resurrection story. In spite of everything that comes our way, we trust, we hope, and we love. We take spontaneous yet substantive delight in our lives, our families, our communities of faith and our (God's?) creation.

Sometimes I think we ought to sing "Joy to the World" not on Christmas but on Easter. Easter is God's joyful Word to us, even in the midst of Crosses.

A joyful Easter season to you all!

A handwritten signature in cursive script that reads "Pastor Keith".

Pr Keith



Just in time for summer!

Fan blades are signed and ready to go up.

Mahalo again to all our fan donors and to Andrea Sikkink for her calligraphy talents!

LOST & FOUND

Did you know that we have a Lost & Found box in the office? Did you know that it is overflowing? If you've lost something, you might want to stop by the office and take a look. We will be donating the articles to the Kidney Pod very soon.



HUKILAU CONFERENCE SPRING ASSEMBLY

APRIL 16, 2016 10:00 am to 2:00 pm
St. John Lutheran Church,
1004 Kailua Road, Kailua

This is our semi-annual opportunity to gather together as ELCA Lutherans in Hawaii to share our stories, discuss possible joint ministry efforts and prepare for the Annual Synod Assembly. Lunch will be provided for a cost \$10.00

Please RSVP by April 11th to
St. John Lutheran Church,

sjohnhi@hawaii.rr.com or 808-261-5787.

Anniversaries

Baptismal Anniversaries

01 Barbara Burke
01 Eric Melin
01 Linda Santos
02 Tina Cox
09 Ethan Chong
11 David Sikkink
21 Nancy Pham
23 Gui Rong Xu-Peterson
23 Jerry Omo
28 Keanu Laabs
28 Adam Larson
30 Judi McClain

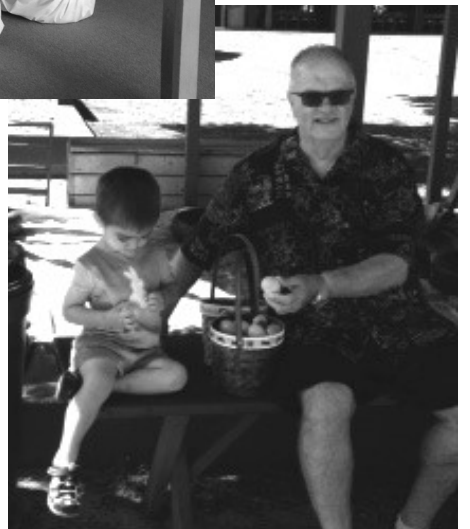


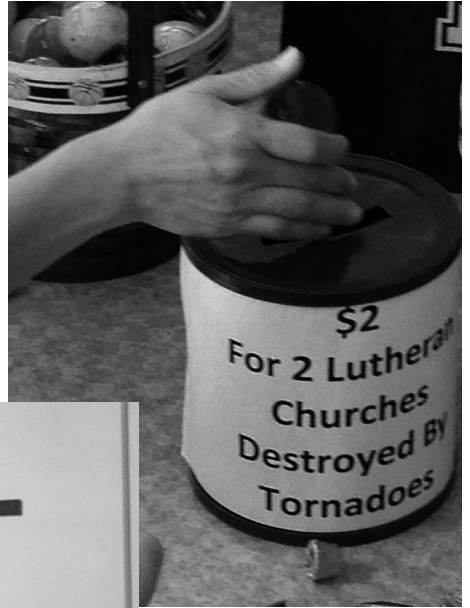
Happy Birthday

03 Anuhea Lanius
03 Anne Washburn (in memory)
08 Paulette Collins
09 Alexander Kriese
11 Georgiana Kolpin
15 Alana Yanagida
20 Gayle Kriese
21 Marilyn Bisquera
22 Credo Bisquera (in memory)
22 Christopher Santos
26 Nolan Acosta
29 Sue Jones
30 Linda Kohlstaedt



**PBJ's
Puppet Ministry Team
having fun with the
folks at The Plaza
Retirement Center**





**2016
Easter Celebrations**









Pacific Health Ministry

SPIRITUAL CARE AND EDUCATION

Spiritual Care Volunteer Training

The six weeks training prepares people for spiritual/pastoral care visitation and care-giving in their own congregations or temples or as spiritual care volunteer in selected health care facilities.* The training program encourages all persons who are interested in developing a lay ministry. The classes will take place on Wednesdays from 5:30pm to 7:30pm.

Dates & Topics

April 6, 2016: Introduction to & Overview of Spiritual Care. Identifying Spiritual Distress

April 13, 2016: The Art of Listening: Listening & Communication & Caring Skills

April 20, 2016: Spiritual Needs around mental health/ in crisis & illness / older adults

April 27, 2016: Spiritual Needs of the Dying & Bereaved

May 4, 2016: Maintaining Healthy Boundaries : What Spiritual Care Volunteers need to know

May 11, 2016: Summary. Getting ready for the visit. The Ministry of Spiritual Care Volunteers

People living with loss, struggling with illness or injury, or those who find themselves isolated are growing in our community every day. When people find themselves in these circumstances, they need others who will be present, listen and offer spiritual care. Institutions and agencies cannot meet the growing community needs. Congregations have always been centers for healing and support.

Preparing members to meet the growing community challenges is vital in meeting these needs.

Windward Location:

St. John Lutheran Church, Grace Hall
1004 Kailua Road, HI 96734

Six Wednesdays from April 6 – May 11; 5:30pm to 7:30pm

Faculty: Pacific Health Ministry Chaplains & Educators

*For questions and more details about the process please contact *Rev. Anke Flohr, Executive Director*

Register by April 3, 2016

1245 Young Street, Suite 204, Honolulu, HI 96814

Phone: 808-591-6556 ext. 207; Fax: 808-593-9206

E-mail: AnkeFlohr@phmhawaii.org



Christ Lutheran Church
95-1361 Meheula Parkway
Mililani, HI 96789



CHRIST LUTHERAN CHURCH

A congregation of the
Evangelical Lutheran Church in Amer-
ica

Church Office:

Phone: (808) 623-9229

Fax: (808) 623-3955

E-Mail address:

Office@clcmililani.org

Web address:

www.clcmililani.org

Like us on Facebook!

Sunday Calendar

9:15 a.m.

PBJ's

9:30 a.m.

Sunday School

9:45 a.m.

Ladies Bible Study - 3rd Sundays

10:45 a.m.

Service of Holy Communion
With Children's Message and
Healing Prayers with Anointing

Professional Keiki care
provided

Healing Service - 2nd Sundays