

PILFERGARD DOOR ALARMS

A



PG10

- Pilfergard model PG10 exit door alarm designed to deter the use of the secured door by sounding a twin action alarm when opened by unauthorized personnel
- Can be bypassed from inside or outside by the use of a key - requires standard mortise cylinder (not supplied)
- Easily installed and tamper supervised with two separate tamper switches
- Test button verifies battery
- Replacement battery is BP6
- Finish: Metallic silver



PG21MS

- Piezo sounder
- Always armed mode: When key is turned counter clockwise to the disarm position, the key cannot be removed; to remove key, turn back to arm mode which keeps the unit always armed
- Standard arming mode: Disarm by turning key counter clockwise; turning key clockwise arms unit
- Max-flex terminals allow for either continuous power with an external power supply or to monitor multiple doors with one unit
- Multiple door monitoring permitted with built-in external reed switches
- Status indicator: LED indicated RED when armed
- Entry delay time options: 15 seconds, 75 seconds, or 205 seconds
- For standard or narrow stile doors
- Can be set for continuous alarm, minute shutdown with auto reset, and exit/entry delay
- Uses standard mortise cylinder (not supplied)
- Tamper switch supervised
- For exterior key control, optional rim cylinder may be used
- Uses 9V alkaline battery (not supplied)
- Finish: Metallic silver



PG30

- Keypad controlled narrow stile door alarm, similar to PG21
- Digital codes for master, management and passage (used for auto-arming)
- 3 security levels for: (A) high security, (B) unattended applications, (C) flexible control for delivery doors, etc
- Audible low battery warning
- 3 programmable 95db siren styles: Sweep, pulsed & steady
- Finish: Metallic silver

MFG #	DESCRIPTION	EZ #
PG10	Exit Door Alarm	009517
PG21MS	Narrow Stile Exit Door Alarm	009762
PG30	Keypad Controlled Narrow Stile Door Alarm	031253



PANIC EXIT ALARM



250 CLAPPER PLATE EXIT ALARM SIRENLOCK™ MODEL 250

- Deadbolt and deadlatch meet UL re-latching requirements
- 95dB dual piezo horn
- Changeable 2 minute alarm cutoff or constant alarm with manual reset
- Powered with 9V battery with audible low battery warning
- Non-handed surface installations on single or double doors
- Requires a mortise cylinder (not supplied)

MFG #	DESCRIPTION	EZ #
250	Panic Exit Alarm	027895

PANIC EXIT ALARM & 15 SECOND DELAYED EGRESS ALARM



700

700 SIRENLOCK™ MODEL 700

- Deadbolt and deadlatch meet UL re-latching requirements
- 95dB dual piezo horn
- Changeable 2 minute auto reset or constant alarm with manual reset
- Powered with 9V battery with audible low battery warning
- Non-handed surface installations on single or double doors
- 33" length for doors up to 36"
- Requires a mortise cylinder (not supplied)



715

715 15 SECOND DELAYED EGRESS EXIT ALARM SIRENLOCK™ MODEL 715

- 15 second delayed egress with instant 95db dual piezo alarm which meets UL specifications
- Instant alarmed exit in case of actual emergency or fire which meets life safety codes
- Surface mount unit in a standard panic bar deadbolt/deadlatch design
- Monitoring output for simultaneous use of CCTV camera, secondary siren, remote monitoring console, etc
- Smoke detector input can be used to power existing system or standalone smoke detectors)
- Includes armored door cord and cables for hard wiring
- 9V battery back-up powers in event of power failure
- Requires a mortise cylinder (not supplied)

MFG #	TYPE	EZ #
700	Standard Exit Alarm	027897
715	Delayed Egress Exit Alarm	000550

EAX300 BATTERY POWERED DOOR PROPPED ALARM



The Detex EAX-300 series is designed for applications where doors may be used for egress or ingress, but may not be held or propped open. Door open times from 1 second to 2 minutes (15 second default) are field selectable. The smaller size makes installation quick and easy.

- Helps keep energy costs down by ensuring doors are closed
- Quick, easy installation saves time and money
- Alarm silences when door is closed, no waiting for key-holder to arrive
- Secure, tamper resistant housing
- Patented plastic template assures accurate installation by providing foolproof alignment with internal magnetic door contact
- Tapered cover allows for installation on narrow stile doors, 2" minimum
- Intelligent circuit senses the external magnet location automatically and sets the correct door handing
- 100 dB piezo alarm
- 9VDC battery operated with low battery alert
- LED visual arming indicators
- Size: 2.10"W x 7.7"H x 2.375"D
- Mortise cylinder with standard Yale cam required (sold separately)
- Accepts 1", 1-1/8" & 1-1/4" cylinders

MFG #	EZ #
EAX300	105341



EAX500 STANDALONE WEATHERIZED BATTERY POWERED EXIT ALARM



- Self-contained door alarm with 100 dB piezo horn that sounds to warn unauthorized use of a door or gate
- Secure, tamper resistant housing
- Patented plastic template allows for foolproof alignment of internal magnetic door contact and accurate installation of unit
- Tapered cover allows for installation on narrow stile doors that are 2" minimum width
- Intelligent circuit senses the external magnet location automatically and sets the correct door handing
- Size: 7.7"H x 2.1"W x 2.375"D
- Patented cam assembly automatically adjusts for different sizes of cylinders without use of spacers
- Extended bypass allows alarm to remain bypassed when door is open and automatically rearm upon door closing
- 9VDC battery operated with low battery alert
- Has LED visual and audible arming indicators
- Field selectable 2-minute auto rearm, if desired
- Field selectable status indicators if desired
- Mortise cylinder with standard Yale cam required (sold separately)
- Accepts 1", 1-1/8" & 1-1/4" cylinders

MFG #	EZ #
EAX500	086334

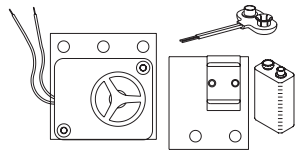
EXIT CONTROL LOCK



- Attack resistant design withstands over 2200 lbs of outside pull force
- Reduces internal and customer theft
- Single point 1" throw saw resistant dead bolt
- 100 decibel alarm, powered by 9-volt battery (included)
- Accepts 5-pin through 7-pin standard and interchangeable core rim cylinders
- Durable steel plate with photo luminescent sign absorbs light to "glow in the dark" when lights are dimmed
- Non-handed
- Locking and unlocking the dead bolt always arms and disarms the alarm
- Resetting the alarm can only be accomplished with a control key

MFG #	DESCRIPTION	EZ #
ECL230D	English	003270
ECL230D FRENCH CDN	French	075089

ACCESSORIES



ECL2111K

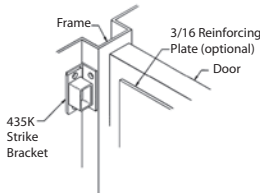
ECL2111K

- Siren/battery conversion kit - for ECL-230C & D
- Converts ECL-230 6 volt lantern battery to 9 volt battery & siren



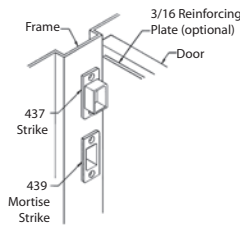
ECL435K

FOR INSWINGING INSTALLATIONS
 and
 DOUBLE DOOR APPLICATIONS
 without a MULLION



ECL437K

FOR OUTSWINGING
 INSTALLATIONS



ECL435K

- Adjustable surface strike bracket for some double door applications where one door is held closed with surface or flush bolts
- For use on left hand, right hand inswinging doors or double doors with one door stationary using flush bolts or DDH-2250

ECL437K

- Adjustable surface strike for use with outswinging doors

PP5572

- Cover lock, nut, and 2 keys

All bracket-mounted strikes include unique adjustable feature for proper installation alignment. All strikes supplied with wood and sheet metal mounting screws.



PP5572

MFG #	DESCRIPTION	EZ #
ECL2111K	9 Volt Conversion Kit	065219
ECL435K	Adjustable Surface Strike	003273
ECL437K	Standard Strike	026229
PP5572	Cover Cam Lock For ECL230, EAX300 & EAX500	003268



FIRE RATED EXIT CONTROL LOCKS & ALARMED & DELAYED EGRESS EXIT DEVICES

ECL600 FIRE RATED EXIT CONTROL LOCKS



- Fire rated and code-compliant relatching exit device
- Attack resistant design withstands over 2200 lbs of outside pull force
- Reduces internal and customer theft
- 1" throw saw resistant dead bolt & 3/4" latching bolt
- 100 decibel alarm, powered by 9-volt battery (included)
- Accepts 5-pin through 7-pin standard and interchangeable core rim cylinders
- Durable steel plate with photo luminescent sign absorbs light to "glow in the dark" when lights are dimmed
- Non-handed
- Locking and unlocking the dead bolt always arms and disarms the alarm
- Resetting the alarm can only be accomplished with a control key

MFG #	DESCRIPTION	EZ #
ECL600	English	065944
ECL600FRENCH CDN	French	075868

V40 ALARMED & DELAYED EGRESS EXIT DEVICES

D



V40EB ALARMED EXIT DEVICE

V40EB

- Reduces internal and customer theft while meeting building code requirements
- Alarmed 100 decibel exit device powered by standard 9-volt battery
- Stainless steel, 3/4" deadlocking Pullman-type latch bolt
- Heavy-duty ribbed aluminum rail extrusion
- Fits 36" doors, (can be cut down in the field) 1-3/4" to 2-1/4" thick with minimum 2-1/2" stiles
- 1/8 turn of mortise cylinder provides dogging of the device
- Controls foot traffic, deters unauthorized exits, and prevents loss
- Heavy-duty angled end cap
- Accommodates all sizes of mortise cylinders with a standard Yale cam; collar is required for 7-pin IC cylinders
- Patented back plate and plastic strike locator provide paperless template for perfect alignment of unit on door and frame
- Field selectable key rearm or 2 minute auto rearm
- Visual and audible arming indicators status are field selectable

V40EE

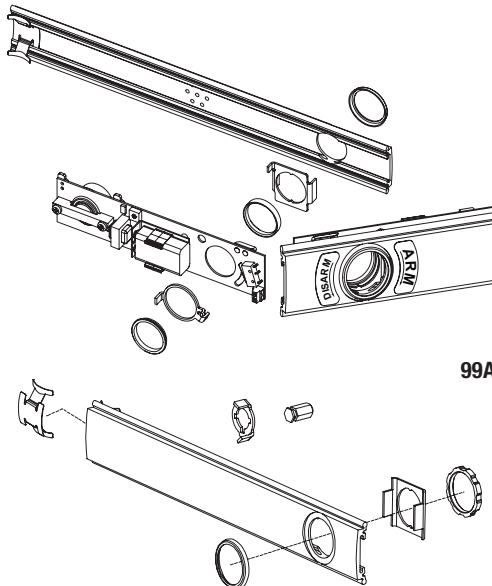
- All the features of the V40EB above with delayed egress
- Powered by regulated power supply that delivers a constant 24VDC of filtered and regulated voltage at a rated load of 1A
- Fire alarm input can be connected at power supply
- Remote signal output and remote bypass input standard
- Includes delayed egress panic bar, 24VDC filtered and regulated power supply, 3' conduit loop and door sign that says "PUSH UNTIL ALARMS SOUNDS, DOOR CAN BE OPENED IN 15 SECONDS"
- 9V battery provides alarm function only in case of power failure



V40EE DELAYED EGRESS BAR

MFG #	FUNCTION	LANGUAGE	EZ #
V40EB628 36	Standard	English	075079
V40EB RWF	Standard	French	075803
V40EE	Delayed Egress	English	088434
EA705 FRENCH CDN	Sticker In French	French	075088

98/98 SERIES ACCESSORIES

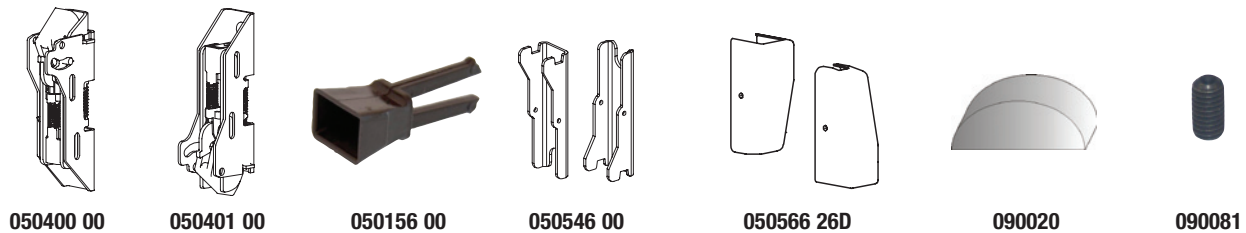


- Retrofit alarm kit for 99 devices to deter unauthorized use of an opening
- ALK kit contains a 85 decibel internal horn: When the touch bar is depressed, the horn sounds to signal that the opening has been violated
- Alarm kit can be armed or disarmed by key
- Uses a standard 1-1/4" mortise cylinder with a straight cam (not supplied)
- Operates on one standard 9 volt alkaline battery
- Furnished with a RX-request to exit switch
- Includes "EMERGENCY EXIT ONLY, ALARM WILL SOUND" decal
- It is recommended to use the non stock ALK-LX kit when used in conjunction with surface mount vertical exit devices

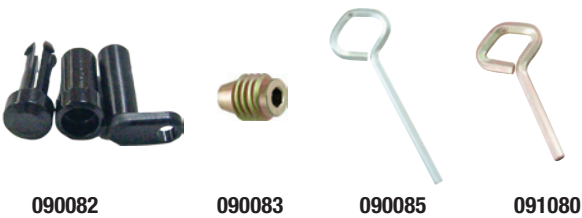
- 050115**
- Retrofit kit for cylinder dogging on 98/99 devices (except fire rate) to replace the standard hex key dogging unit
 - Requires a 1-1/4" mortise cylinder with straight cam (not supplied)

MFG #	DESCRIPTION	SERIES	EZ #
99ALK US28	Alarm Kit	99	069014
050115	Cylinder Dogging Kit	99 Except Fire Rated	029407
EXT ROD9927	12" Extension Rod Kit	9827 & 9927	047626

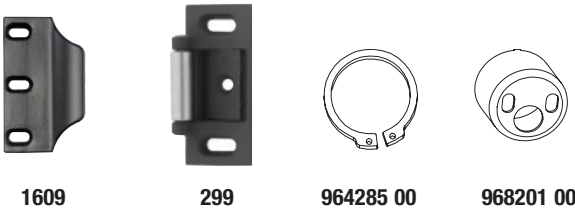
EXIT DEVICE PARTS (ALL SERIES)



050400 00 050401 00 050156 00 050546 00 050566 26D 090020 090081



090082 090083 090085 091080



1609 299 964285 00 968201 00



971573 00 968601 968603

MFG #	DESCRIPTION	SERIES	EZ #
050400 00	Top Latch Less Cover	9827, 9927	070621
050401 00	Bottom Latch Less Cover	9827, 9927	070620
050156 00	Tailpiece Guide Lead Kit	360, 990	070661
050546 00	Vertical Rod Latch Case Mounting Bracket	2227, 33/3527, 98/9927	070638
050566 26D	Latch Case Cover Kit	9827, 9927	070635
090020 00	Wedge	88	070697
090081	Wedge Tite Adapter Screw	55, 88	013715
090082	Lever Arm Axle Assembly	88	027733
090083	Dogging Screw	88	037257
090085	5/32" Hex Dogging Key	22, 98, 99	013749
091080	7/32" Hex Dogging Key	44, 88	013744
1609 26D	Double Door Strike	44, 55, 88, 98, 99	013728
299BLACK	Standard Door Strike	44, 55, 88, 98, 99	027626
964285 00	Truarc Retaining Ring	991, 992	073535
968201 00	Cylinder Retainer Cup	210, 990	070674
971573 00	Lift Spring	992	070678
968601 00	End Cap	22	070651
968603 SP28	Center Case Cover	22	073059

