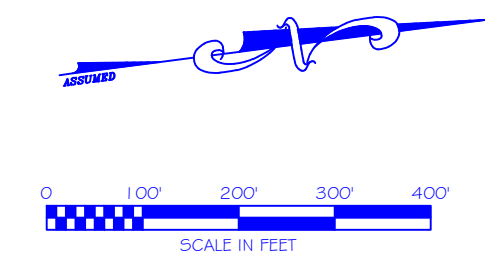
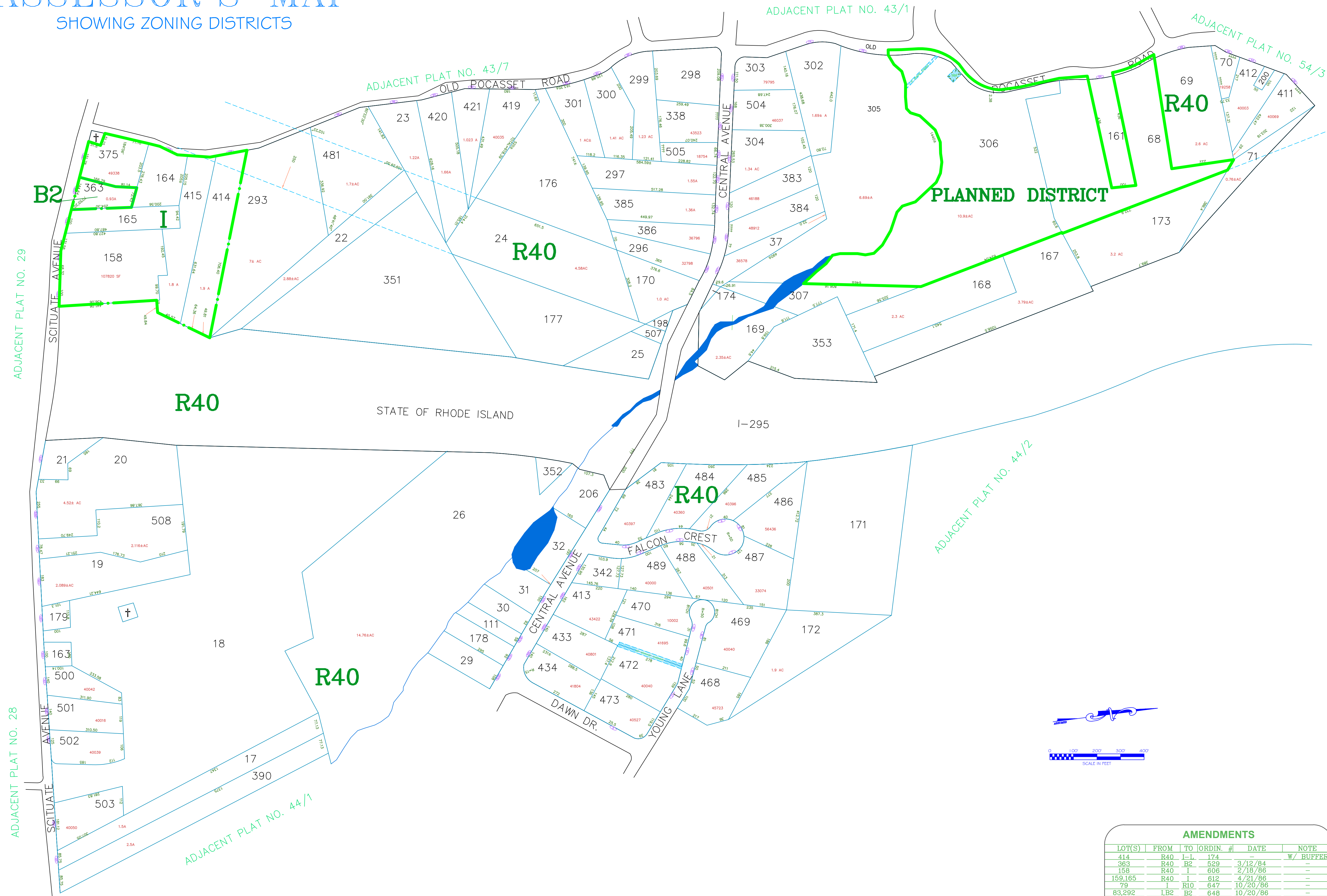


ASSESSOR'S MAP

SHOWING ZONING DISTRICTS



AMENDMENTS					
LOT(S)	FROM	TO	ORDIN. #	DATE	NOTE
414	R40	I-L	174	-	W/ BUFFER
363	R40	B2	529	3/12/84	-
159	R40	I	606	2/18/86	-
159,165	R40	I	612	4/21/86	-
79	I	R10	647	10/20/86	-
83,292	I,B2	B2	648	10/20/86	-
164,415	R40	I	568	5/13/85	WITH STIP.
414	R40	I	796	9/11/89	SEE ORD
68,306	R40	PD	2011-16	09/12/2011	-

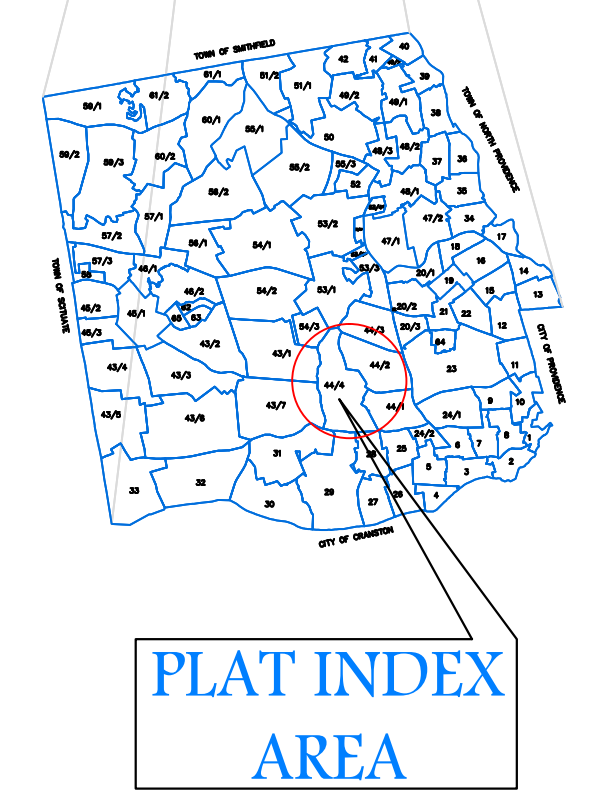
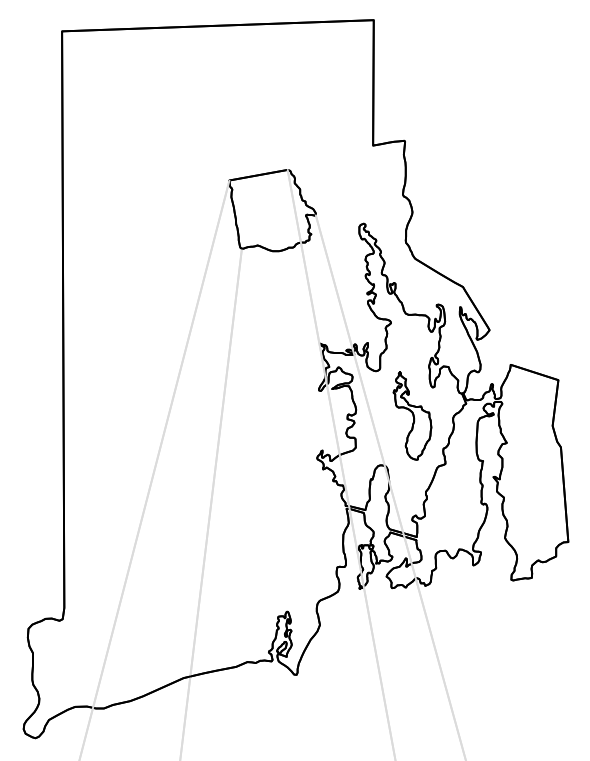
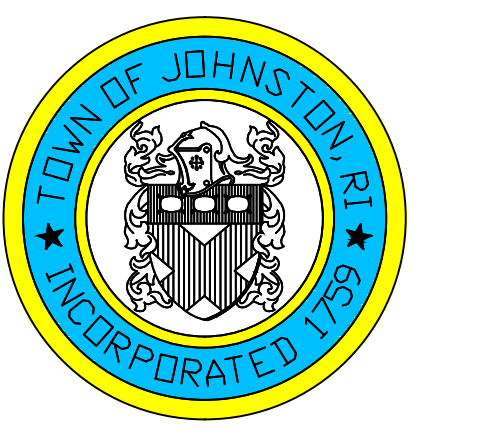
Assessor's Plat Number

44/4

STATE OF RHODE ISLAND
TOWN OF JOHNSTON

PROVIDENCE COUNTY
INCORPORATED 1759

ASSESSOR'S OFFICE
1385 HARTFORD AVENUE
JOHNSTON, RHODE ISLAND
02919



Scale: 1:200

Revised By: Benjamin Ng

Last updated: January 04, 2016

Date printed: January 04, 2016

For copies of plat maps, please go to the DPW at 100 Irons Avenue Johnston Rhode Island. Thank you.

NOTE: This map was prepared for the use of the Town of Johnston for assessment and illustrative purposes only. It does not represent a survey of the premises. No liability is assumed as to the sufficiency or accuracy of the data delineated hereon.