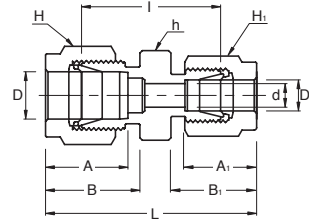
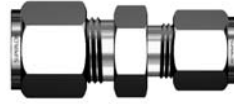


## SRU Reducing Union



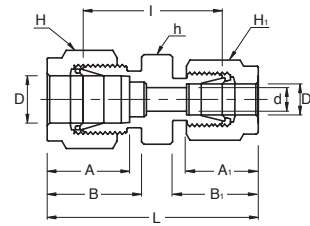
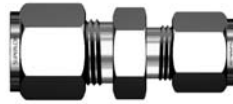
### Connects Fractional Tubes

Part No.	Tube O.D.		d Min	Width Across Flat			A	A <sub>1</sub>	B	B <sub>1</sub>	I	L
	D (inch)	D <sub>1</sub> (inch)		h (inch)	H (inch)	H <sub>1</sub> (inch)						
SRU 2 - 1	1/8	1/16	1.27	7/16	7/16	5/16	12.7	8.63	15.24	10.92	20.60	31.00
SRU 3 - 2	3/16	1/8	2.28	7/16	1/2	7/16	13.71	12.70	16.00	15.24	23.36	36.57
SRU 4 - 2	1/4	1/8	2.28	1/2	9/16	7/16	15.24	12.70	17.78	15.24	24.63	38.60
SRU 4 - 3	1/4	3/16	3.04	1/2	9/16	1/2	15.24	13.71	17.78	16.00	25.40	39.37
SRU 5 - 2	5/16	1/8	2.28	9/16	5/8	7/16	16.25	12.70	18.54	15.24	25.90	39.87
SRU 5 - 4	5/16	1/4	4.82	9/16	5/8	9/16	16.25	15.24	18.54	17.78	27.43	42.16
SRU 6 - 2	3/8	1/8	2.28	5/8	11/16	7/16	16.76	12.70	19.30	15.24	26.92	40.89
SRU 6 - 4	3/8	1/4	4.82	5/8	11/16	9/16	16.76	15.24	19.30	17.78	28.44	43.18
SRU 6 - 5	3/8	5/16	6.35	5/8	11/16	5/8	16.76	16.25	19.30	18.54	29.46	44.19
SRU 8 - 2	1/2	1/8	2.28	13/16	7/8	7/16	22.86	12.70	21.84	15.24	28.44	45.21
SRU 8 - 4	1/2	1/4	4.82	13/16	7/8	9/16	22.86	15.24	21.84	17.78	29.46	46.99
SRU 8 - 6	1/2	3/8	7.11	13/16	7/8	11/16	22.86	16.76	21.84	19.30	30.98	48.51
SRU 10 - 6	5/8	3/8	7.11	15/16	1	11/16	24.38	16.76	21.84	19.30	31.75	49.27
SRU 10 - 8	5/8	1/2	10.41	15/16	1	7/8	24.38	22.86	21.84	21.84	31.75	52.07
SRU 12 - 4	3/4	1/4	4.82	1-1/16	1-1/8	9/16	24.38	15.24	21.84	17.78	31.75	49.27
SRU 12 - 6	3/4	3/8	7.11	1-1/16	1-1/8	11/16	24.38	16.76	21.84	19.30	33.27	50.80
SRU 12 - 8	3/4	1/2	10.41	1-1/16	1-1/8	7/8	24.38	22.86	21.84	21.84	33.27	53.59
SRU 12 - 10	3/4	5/8	12.70	1-1/16	1-1/8	1	24.38	24.38	21.84	21.84	33.27	53.59
SRU 16 - 8	1	1/2	10.41	1-3/8	1-1/2	7/8	31.24	22.86	26.41	21.84	39.50	63.24
SRU 16 - 12	1	3/4	15.74	1-3/8	1-1/2	1-1/8	31.24	24.38	26.41	21.84	39.00	62.73

### Connects Metric Tubes

Part No.	Tube O.D.		d Min	Width Across Flat			A	A <sub>1</sub>	B	B <sub>1</sub>	I	L
	D	D <sub>1</sub>		h	H	H <sub>1</sub>						
SRU 6M- 3M	6	3	2.4	14	14	12	15.3	12.9	17.7	15.3	24.6	38.6
SRU 6M- 4M	6	4	2.4	14	14	12	15.3	13.7	17.7	16.1	25.4	39.4
SRU 8M- 6M	8	6	4.8	15	16	14	16.2	15.3	18.6	17.7	27.4	42.3
SRU 10M- 6M	10	6	4.8	18	19	14	17.2	15.3	19.5	17.7	29.5	44.5
SRU 10M- 8M	10	8	6.4	18	19	16	17.2	16.2	19.5	18.6	30.0	45.1
SRU 12M- 6M	12	6	4.8	22	22	14	22.8	15.3	22.0	17.7	29.5	47.0
SRU 12M- 8M	12	8	6.4	22	22	16	22.8	16.2	22.0	18.6	30.2	47.8
SRU 12M- 10M	12	10	7.9	22	22	19	22.8	17.2	22.0	19.5	31.0	48.7
SRU 16M- 12M	16	12	9.5	24	25	22	24.4	22.8	22.0	22.0	31.8	52.0
SRU 25M- 18M	25	18	15.1	35	38	30	31.3	24.4	26.5	22.0	38.6	61.0
SRU 25M- 20M	25	20	15.9	35	38	32	31.3	26.0	26.5	22.0	39.9	62.3

## SRU Reducing Union



### Connects Metric Tubes To Fractional Tubes

Part No.	Tube O.D.		d Min	Width Across Flat			A	A <sub>1</sub>	B	B <sub>1</sub>	I	L
	D	D <sub>1</sub> (inch)		h	H	H <sub>1</sub>						
SRU 3M - 2	3	1/8	2.4	12	12	11.1	12.9	12.8	15.3	15.2	22.1	35.2
SRU 4M - 2	4	1/8	2.4	12	12	11.1	13.7	12.8	16.1	15.2	23.4	36.5
SRU 4M - 4	4	1/4	2.4	14	12	14.3	13.7	15.3	16.1	17.7	25.4	39.4
SRU 6M - 2	6	1/8	2.4	14	14	11.1	15.3	12.8	17.7	15.2	24.6	38.5
SRU 6M - 4	6	1/4	4.8	14	14	14.3	15.3	15.3	17.7	17.7	26.2	41.0
SRU 6M - 5	6	5/16	4.8	14	14	15.9	15.3	16.2	17.7	18.6	27.4	42.3
SRU 8M - 4	8	1/4	4.8	15	16	14.3	16.2	15.3	18.6	17.7	27.4	42.3
SRU 10M - 2	10	1/8	2.4	18	19	11.1	17.2	12.8	19.5	15.2	27.7	41.8
SRU 10M - 4	10	1/4	4.8	18	19	14.3	17.2	15.3	19.5	17.7	29.5	44.5
SRU 10M - 5	10	5/16	6.4	18	19	15.9	17.2	16.2	19.5	18.6	30.0	45.1
SRU 10M - 6	10	3/8	7.1	18	19	17.5	17.2	16.9	19.5	19.2	31.0	45.9
SRU 12M - 5	12	5/16	6.4	22	22	15.9	22.8	16.2	22.0	18.6	30.2	47.8
SRU 12M - 6	12	3/8	7.1	22	22	17.5	22.8	16.9	22.0	19.2	31.0	48.4
SRU 12M - 8	12	1/2	9.5	22	22	22.2	22.8	22.8	22.0	22.0	31.0	51.2
SRU 15M - 8	15	1/2	10.3	24	25	22.2	24.4	22.8	22.0	22.0	31.8	52.0
SRU 16M - 10	16	5/8	12.7	24	25	25.4	24.4	24.4	22.0	22.0	31.8	52.0
SRU 18M - 12	18	3/4	15.1	27	30	28.6	24.4	24.4	22.0	22.0	33.3	53.5
SRU 20M - 12	20	3/4	15.9	30	32	28.6	26.0	24.4	22.0	22.0	34.8	54.9
SRU 20M - 16	20	1	15.9	35	32	38.1	26.0	31.2	22.0	26.4	40.4	62.8
SRU 25M - 16	25	1	21.8	35	38	38.1	31.3	31.3	26.5	26.5	40.4	65.0