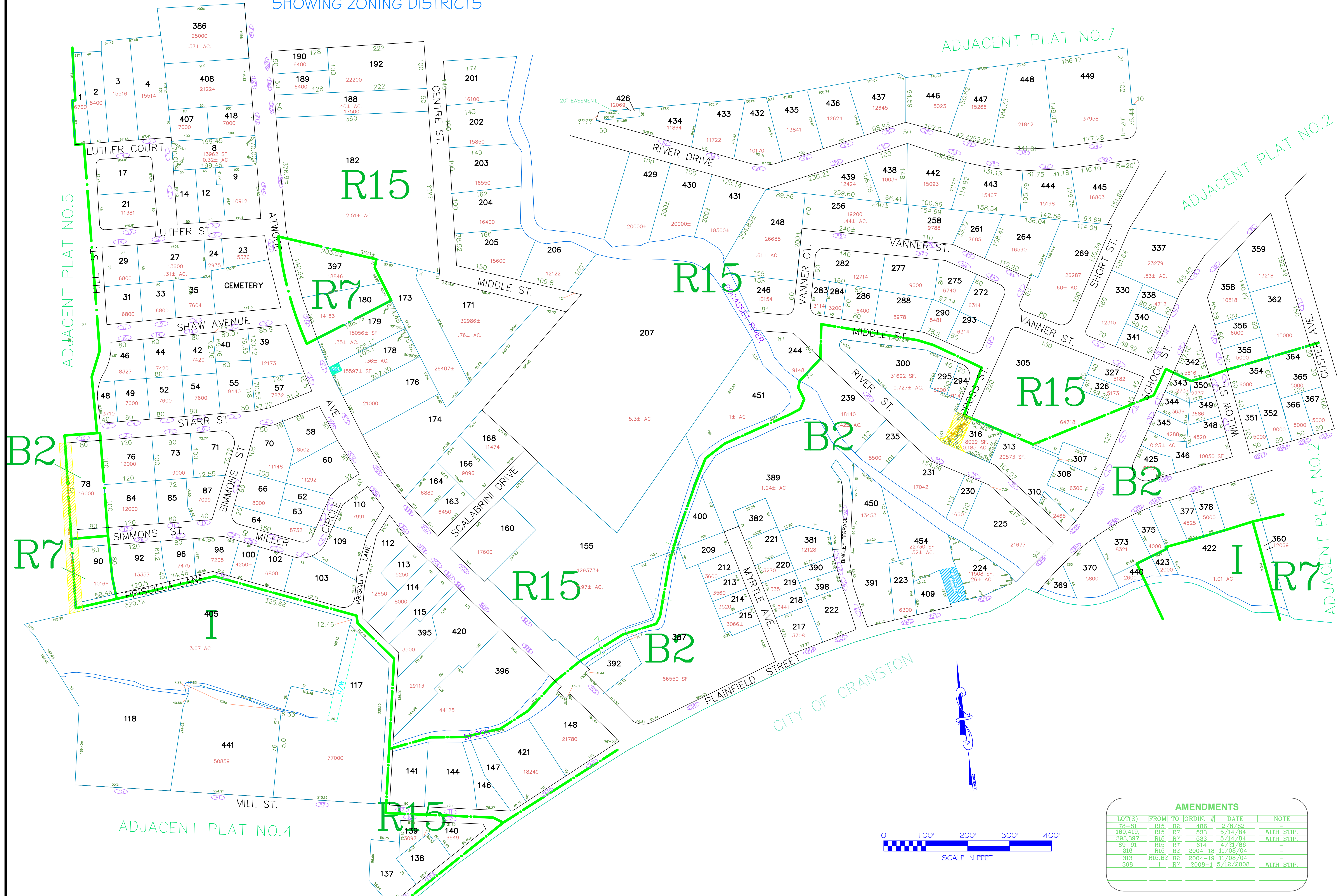


ASSESSOR'S MAP

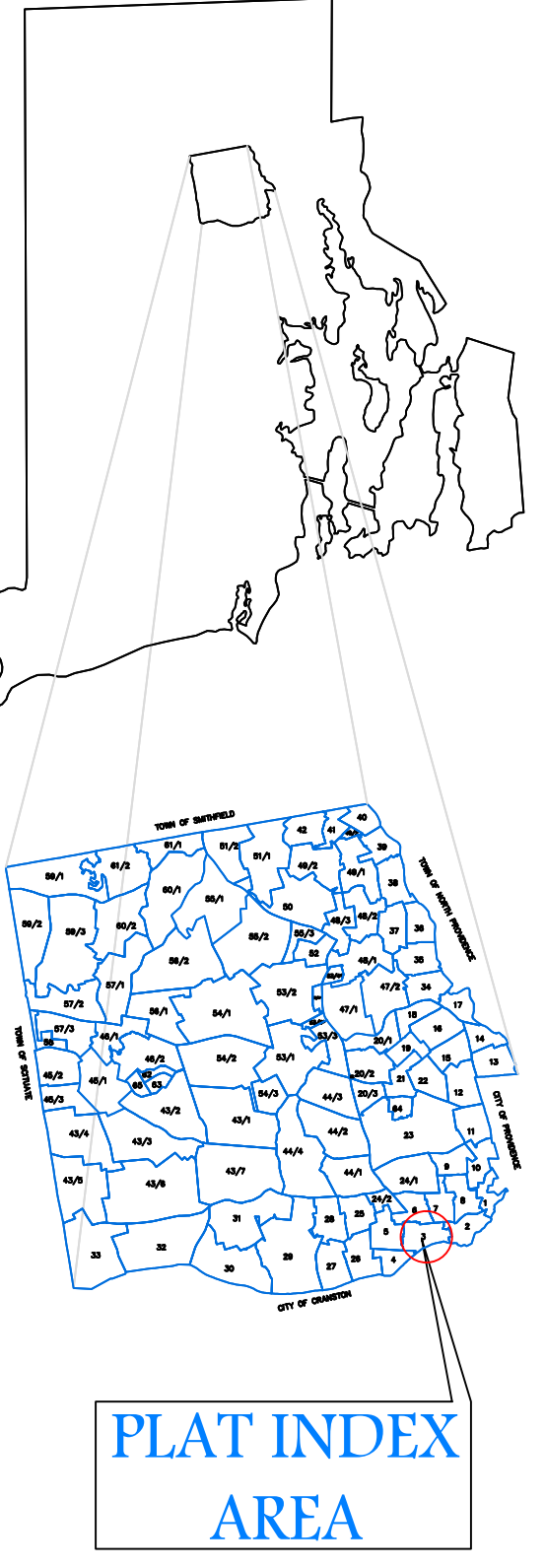
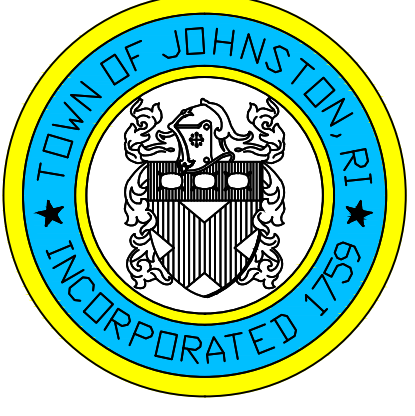
SHOWING ZONING DISTRICTS



Assessor's Plat Number

3

STATE OF RHODE ISLAND
 TOWN OF JOHNSTON
 PROVIDENCE COUNTY
 INCORPORATED 1759
 ASSESSOR'S OFFICE
 1385 HARTFORD AVENUE
 JOHNSTON, RHODE ISLAND
 02919



Scale: 1:100
 Revised By: Benjamin Ng
 Last updated: January 04, 2016
 Date printed: January 04, 2016

For copies of plat maps, please go to the DPW at 100 Irons Avenue Johnston Rhode Island. Thank you.

NOTE: This map was prepared for the use of the Town of Johnston for assessment and illustrative purposes only. It does not represent a survey of the premises. No liability is assumed as to the sufficiency or accuracy of the data delineated hereon.

AMENDMENTS					
LOT(S)	FROM	TO	ORDIN. #	DATE	NOTE
78-81	R15	B2	486	2/8/82	-
180,419	R15	R7	533	5/14/84	WITH STIP.
393,397	R15	R7	533	5/14/84	WITH STIP.
89-91	R15	R7	614	4/21/86	-
318	R15	B2	2004-18	11/08/04	-
313	R15, B2	B2	2004-19	11/08/04	-
368	I	R7	2008-1	5/12/2008	WITH STIP.

