

Results from the IQ-CSRC prospective study support replacement of the thorough QT study by QT assessment in the early clinical phase

Borje Darpo*, MD, PhD^{1,2}, Charles Benson[#], MD, PhD³, Corina Dota*, MD⁴, Georg Ferber, PhD⁵, Christine Garnett*, PharmD⁶, Cynthia L Green, PhD⁷, Venkateswar Jarugula[#], PhD⁸, Lars Johannesen, MSc⁹, James Keirns[#], PhD¹⁰, Kevin Krudys, PhD¹¹, Jiang Liu, PhD¹¹, Catherine Ortemann-Renon*, PharmD, PhD¹², Steve Riley, PharmD, PhD¹³, Nenad Sarapa[#], MD¹⁴, Brian Smith, BS², Randall R Stoltz, MD¹⁵, Meijian Zhou, PhD², Norman Stockbridge, MD, PhD¹⁶.

*: Representing the Cardiac Safety Research Consortium (CSRC);

[#]: Representing the International Consortium for Innovation and Quality in Pharmaceutical Development (IQ);

1. Karolinska Institutet, Division of Cardiovascular Medicine, Department of Clinical Sciences, Danderyd's Hospital, Stockholm, Sweden.
2. iCardiac Technologies, Inc., 150 Allens Creek Road, Rochester 14618, NY, USA.
3. Lilly Corporate Center, Eli Lilly & Co., Indianapolis, IN 46285, USA.
4. AstraZeneca R&D Mölndal, Mölndal SE431 83, Sweden.
5. Statistik Georg Ferber GmbH, CH-4125 Riehen/Switzerland
6. Certara, St. Louis, MO 63144-2319 USA.
7. Duke Clinical Research Institute, Duke University Medical Center, Durham, NC, 27705, USA.
8. Drug Metabolism and Pharmacokinetics, Novartis Institute for Biomedical Research, East Hanover, NJ 07936-1080, USA.
9. Division of Pharmacometrics, Office of Clinical Pharmacology, Center of Drug Evaluation and Research, US Food and Drug Administration, Silver Spring, MD, USA and Department of Clinical Physiology, Karolinska Institutet, Karolinska University Hospital, Stockholm, Sweden.
10. Global Clinical Pharmacology & Exploratory Development, Astellas Pharma Global Development, Inc., Northbrook, IL, 60062, USA
11. Division of Pharmacometrics, Office of Clinical Pharmacology, Center for Drug Evaluation and Research, US Food and Drug Administration, , Silver Spring, MD 20993, USA.
12. Clinical and Exploratory Pharmacology, Sanofi, Bridgewater, NJ 08807, USA.
13. Clinical Pharmacology, Global Innovative Pharma Business, Pfizer Inc., Groton, CT 06340, USA.
14. Clinical Science, Bayer Healthcare, Inc. Whippany, NJ, USA
15. Covance Clinical Research Unit, 610 Oakley St., Evansville, IN 47710, USA
16. Division of Cardiovascular and Renal Products, Center for Drug Evaluation and Research, US Food and Drug Administration, Silver Spring, MD 20993, USA.

This article has been accepted for publication and undergone full peer review but has not been through the copyediting, typesetting, pagination and proofreading process which may lead to differences between this version and the Version of Record. Please cite this article as an 'Accepted Article', doi: 10.1002/cpt.60

Replacing the TQT study

Corresponding author:

Borje Darpo, MD PhD, Associate Professor

Karolinska Institutet, Division of Cardiovascular Medicine, Department of Clinical Sciences,
Danderyd's Hospital, Stockholm, Sweden.

Telephone: +46 763 902 130; Fax: NA; Email: borje.darpo@telia.com

References: 46; Figures: 2; Tables 5

Key words: QT, thorough QT study, exposure response, early phase, First-in-Human

Abbreviations

Δ	Change-from-baseline
$\Delta\Delta$	Placebo-adjusted, change-from-baseline
CSRC	Cardiac Safety Research Consortium
ER	Exposure-response
FIH	Fist-in-Human
IQ	Consortium for Innovation and Quality in Pharmaceutical Development
MAD	Multiple ascending dose
SAD	Single ascending dose
TQT	Thorough QT

Abstract

Design and Methods: The QT effects of 5 'QT positive' and one negative drug were tested to evaluate whether exposure-response analysis can detect QT effects in a small study with healthy subjects. Each drug was given to 9 subjects (6 for placebo) in two dose levels; positive drugs were chosen to cause 10 to 12 ms and 15 to 20 ms QTcF prolongation.

Results: The slope of the concentration/ Δ QTc effect was significantly positive for ondansetron, quinine, dolasetron, moxifloxacin and dofetilide. For the lower dose, an effect above 10 ms could not be excluded, i.e., the upper bound of the confidence interval for the predicted mean $\Delta\Delta$ QTcF effect was above 10 ms. For the negative drug, levocetirizine, a $\Delta\Delta$ QTcF effect above 10 ms was excluded at 6-fold the therapeutic dose.

Conclusion: The study provides evidence that robust QT assessment in early phase clinical studies can replace the thorough QT study.

Introduction

Safety concerns arising from observations of QT prolongation and potentially lethal proarrhythmias caused by non-antiarrhythmic drugs during the 90's (1, 2) led to the regulatory request to improve the characterization of potential ECG effects of new drugs (3, 4). In 2005, the ICH E14 clinical guidance for QT assessment (5) was implemented, which mandated that all new drugs with systemic availability should undergo systematic evaluation of the potential to cause QT prolongation, typically in a so-called thorough QT (TQT) study in healthy subjects. The study is designed to exclude a QT effect above the threshold of concern, i.e. an effect exceeding 10 ms must be excluded at all post-dose timepoints (6, 7). In case such a 'threshold' effect cannot be excluded, the implications in terms of ECG monitoring in late stage trials are substantial and if the drug is approved, the labeling will include appropriate recommendations (7). The TQT study is resource intensive (8) and if an alternative way of QT assessment could be incorporated into a routinely performed early phase clinical pharmacology study, this would present not only a more efficient approach but also come with other advantages, such as improved understanding of any QT concerns early in clinical development. The First-in-Human (FIH) single ascending dose (SAD) and multiple ascending dose (MAD) studies seem best suited for this purpose; often achieved plasma levels substantially exceed therapeutic levels later observed in patients. Provided that an intense ECG assessment schedule coinciding with pharmacokinetic sampling is incorporated into the design, SAD and MAD studies represent an opportunity to generate ECG data with the same high level of confidence as the TQT study (9-11). However, because doses are distributed across several small cohorts with often fewer than 10 subjects on active drug and 2 on placebo, the power to exclude small effects in a 'by timepoint' analysis, as mandated for the TQT study, is low (12). In contrast, when an exposure-response (ER) analysis is utilized, all data

Replacing the TQT study

across the often wide range of plasma concentrations of the drug are used in the same model, which substantially improves the precision of the estimated QTc effect (13). Exposure response (ER) analysis is mentioned in the E14 Q&A document from March 2014 as 'promising in terms of enhancing our confidence to characterise QTc prolongation' (7) and the methodology has been used in the evaluation of TQT studies to characterize QTc effects. The analysis has been used to predict QT effects with doses and formulations not directly evaluated in the TQT study, predict effects in specific populations and under certain conditions (e.g., drug interactions) that increase exposure to a drug due to intrinsic and extrinsic factors and clarify ambiguous results from the TQT study (14, 15).

The objective of this study was to evaluate whether QT assessment performed in early phase studies using an intense ECG schedule and ER analysis can detect a small QT effect with the same confidence as a thorough QT study. The study was undertaken as a collaborative research effort between the Clinical Pharmacology Leadership Group of the Consortium for Innovation and Quality in Pharmaceutical Development (IQ) (16) and the Cardiac Safety Research Consortium (CSRC (17)). Six drugs with a well-characterized QT effect, of which 5 have been shown to be positive, were evaluated in healthy volunteers. Drugs and doses were identified in collaboration with the FDA based on a shared understanding that if the study successfully detects the QT effect of the positive drugs, a similar approach (i.e., QT assessment in early phase clinical studies) could potentially serve as an alternative to the TQT study.

Based on the results of this study and on the extensive experience that has been gained over recent years with ER analysis of QT data (14, 15), we propose that a clinically relevant QT effect can be excluded with ER analysis applied to early phase clinical data when the upper bound of

Replacing the TQT study

the 90% confidence interval (CI) for the predicted effect is below 10 ms at plasma levels of the drug that can be observed in the target patient population on the therapeutic dose.

Results

Twenty subjects (18 males and 2 females; 13 Caucasians and 7 African-Americans) with a mean (SD) age of 38 (8) years and body mass index of 26.5 (3.2) kg/m² were randomized. Two subjects were not dosed on Day 2 of the quinine period due to QTc prolongation. One subject withdrew on Day 1 in treatment Period 3 prior to the third dose of quinine because of adverse events of nausea, vomiting, and dizziness, and one subject was withdrawn prior to dosing on Day 1 of Period 3 because of an administrative exclusion criterion. This resulted in 8 subjects dosed with levocetirizine and 9 for all other active drugs on Day 1; on Day 2, there were 9 subjects on ondansetron, dolasetron, moxifloxacin and dofetilide, 8 on levocetirizine and 6 on quinine. Data from all 6 subjects who received placebo were available from both study days.

The targeted peak plasma levels were generally achieved on Day 1 and Day 2, with the exception of ondansetron, for which levels were lower than anticipated on Day 2 (*Figure 1 and Table 2*).

The Δ QTcF and plasma concentrations by timepoint and treatment are shown in *Figure 1, Panels A to F*. On Day 1, the largest mean placebo-adjusted Δ QTcF ($\Delta\Delta$ QTcF) was between 10 and 15 ms for all QT positive drugs except hydrodolasetron (6.5 ms); $\Delta\Delta$ QTcF was 1.8 ms for levocetirizine. On Day 2, the largest mean $\Delta\Delta$ QTcF reached 10.2 and 12.2 ms for ondansetron and hydrodolasetron, respectively and exceeded 20 ms for quinine (22.1 ms), moxifloxacin (33.4 ms) and dofetilide (24.5 ms); the peak value observed after dosing with levocetirizine was 3.1 ms (*Table 2*). The precision of the QT interval measurement calculated as the between-subject SD of Δ QTcF across all timepoints was on average 7.2 ms.

Replacing the TQT study

The criteria for the absence of hysteresis were met for all drugs, and the test for non-linearity was non-significant for all drugs except dofetilide, for which an Emax model provided a better fit of the data. The concentration/QTc slope estimates and the predicted $\Delta\Delta\text{QTcF}$ effect at the observed geometric mean Cmax on Day 1 are shown in *Table 3 and Figure 2*. All QT positive drugs met the pre-specified criteria for positive QT assessment. For dofetilide, the predicted QT effect on Day 1 using an Emax model was 11.6 ms (90% CI: 7.0 to 16.0). Levocetirizine met the criterion for a negative QT assessment. Use of data from Day 1 only (for levocetirizine, Day 2 only) resulted in a wider CI of the slope estimate, but did not alter the conclusions: Criteria for positive and negative QT assessment were met on data from all 6 drugs (*Table 3*).

With few exceptions, heart rate changes were small at all timepoints with $\Delta\Delta\text{HR}$ less than 5 bpm. The largest mean $\Delta\Delta\text{PR}$ interval was 8.9 ms for quinine on Day 1 and 16 ms for quinine and dolasetron on Day 2; for all other treatments, mean $\Delta\Delta\text{PR}$ was less than 6 ms (*Table 4*). The largest observed mean effect on the QRS interval after dosing with quinine and dolasetron was $\Delta\Delta\text{QRS}$ of 7.7 ms and 5.2 ms on Day 2, respectively. All other QRS changes were below 5 ms (*Table 5*).

Discussion

The objective of this study was to evaluate whether intense ECG assessment paired with ER analysis in early phase clinical trials can provide QT data with the same high level of confidence as the TQT study and thereby serve as a potential alternative or replacement for the latter. The study was designed in discussions with the FDA, which identified 5 QT positive drugs and the doses at which they should be evaluated. Criteria for negative and positive QT assessment were agreed on and the Agency endorsed the concept that if this pilot study met the criteria for positive

Replacing the TQT study

QT assessment for all 5 QT positive drugs, this would provide evidence to support that a similar approach, applied to early phase clinical pharmacology studies can be used as an alternative to the TQT study.

Substantial experience has been gained with ER analysis and the methodology is now routinely used to predict QT effects in the targeted patient population (14, 18-24). On the basis of this experience (15), we believe it is now time to consider this methodology in early phase clinical studies as the primary viable alternative to the TQT study to exclude a small QT effect. Extensive experience with QT prolonging drugs shows that the QT effect is driven by plasma levels of the drug or main metabolites, with few exceptions as discussed below. It therefore seems sensible to focus on QT effects in relation to plasma concentration, rather than by timepoint without consideration of the pharmacology of the drug. The results of this study lend further support to this paradigm shift: The 5 QT positive drugs were given at a dose that was expected to cause QT prolongation identified by FDA as corresponding to the level of regulatory concern. All 5 drugs met the prospectively agreed criteria of a) a statistically significant, positive slope of the concentration/QTc relationship and b) a QTc effect above 10 ms could not be excluded for the lower dose, i.e. the upper bound of the 90% CI of the model-predicted $\Delta\Delta\text{QTcF}$ effect at the observed C_{max} exceeded 10 ms (**Table 3**). The criterion for negative QT assessment used in this study corresponds to the one defining a negative TQT study, adapted to the use of ER analysis: a QTc effect above 10 ms must be excluded with the supratherapeutic dose, i.e. the upper bound of the 90% CI of the model-predicted $\Delta\Delta\text{QTcF}$ effect at C_{max} must be below 10 ms. Levocetirizine at 6-fold the therapeutic dose clearly met this criterion. The study was thereby able to meet its primary objective to demonstrate that a small, early phase, clinical study can detect drugs with a QT effect at the level of regulatory concern and, importantly, the study can also be used to

Replacing the TQT study

exclude small QT effects for drugs with no underlying clinically relevant effect. In addition, previously described effects on cardiac conduction (PR and QRS intervals) with dolasetron (20) and quinine (25, 26) were confirmed.

Data from one day only (lower dose of the QT positive drugs and higher dose of levocetirizine) were also analyzed to evaluate ER analysis when the peak QT effects were lower. This analysis resulted in very similar estimates of the ER slope and the predicted effect (**Table 3**), but increased the variability of the slope estimate with consequently somewhat wider CIs. The difference was relatively minor and criteria (negative and positive) for all drugs were met also in this analysis (**Table 3**). It is noteworthy that for dolasetron the mean peak $\Delta\Delta\text{QTcF}$ effect by timepoint was only 6.5 ms on Day 1. The finding that this study was able to detect such a small QT effect should provide further reassurance that a drug is truly negative at therapeutic plasma levels, when high doses are evaluated and the QT assessment is negative at clearly supratherapeutic levels.

Exposure-response analysis has frequently been used in a descriptive or exploratory way to supplement the primary by timepoint analysis described in the ICH E14 document. This practice has been criticized from a statistical viewpoint (27, 28) when the model was incompletely prespecified. In this study, we used this analysis as the primary confirmatory analysis and, as a consequence, we prospectively defined criteria for model selection. According to these criteria, hysteresis was excluded and the ER relationship was linear for all drugs except dofetilide; alternative models (Emax, log-linear and square root) were therefore explored for dofetilide and an Emax model was determined to best fit the data. A non-linear Emax relationship has been described with other antiarrhythmic drugs (29) and some tyrosine kinase inhibitors with relatively pronounced QT effects (30), but in FDA's review of dofetilide, the ER relation was best described with a linear model (31). Our finding may well have been a chance finding, to which multiplicity

Replacing the TQT study

in testing for linearity may have contributed, since substantially lower dofetilide plasma levels were achieved in this study (mean C_{max} below 1 ng/mL), as compared to the studies in the dossier, in which levels up to 5 ng/mL were seen. It is important to note that with both a linear and the non-linear E_{max} model, criteria for a QT positive drug were clearly met and the predicted QT effect with both models was similar: 11.6 ms (90% CI 7.0 to 16.0) with E_{max} and 10.5 ms (90% CI 6.3 to 14.9) with linear. The slope of the dofetilide ER relationship using a linear model in this study (22 ms per ng/mL) was within the range described in the Tikosyn label (15 to 25 ms per ng/mL after single dose) (31). It is however, worth emphasizing that the objective of early phase clinical QT assessment is to exclude small QT effects, rather than to provide a robust characterization of the ER relationship. If the QT effect is unambiguous, the consequence would be the same as for a positive TQT study: the QT effect should be further characterized in the targeted patient population. Likewise, a negative assessment would have the same implications as a negative TQT study. There may also be cases in which the sponsor chooses to confirm a less clear signal in a formal TQT study.

For some drugs, the pharmacokinetic profile will require an assessment of ECG effects using multiple dosing over several days, and the same considerations would apply as for the choice between a single- and multiple-dose TQT study. Such drugs include those that demonstrate substantial accumulation, if a sufficiently high single dose cannot be administered. Longer durations of administration will also be required for rare drugs with slowly appearing metabolites causing QT effects (see e.g.(32)); multiple-dose studies in such cases may be suggested by the results from non-clinical assays, e.g. a positive hERG assay with a major metabolite or QT effects in multiple dose studies in animals.

Replacing the TQT study

Early phase clinical studies intended for QT assessment will not incorporate a positive control and it is therefore important to address the concern with respect to this practice. Since the TQT study is used to exclude a small QT effect, the positive control serves the purpose of demonstrating that the experimental conditions of the study are sensitive enough to detect a small effect of the investigational compound, should there be one, thereby providing protection against false negatives. The concern over false negatives is the most important from a drug safety perspective, but this risk is, in our view, very low when ER analysis is applied to early phase QT studies, provided a wide range of drug plasma levels has been achieved and an intense ECG/PK schedule has been implemented using the same experimental conditions and ECG methodologies as in TQT studies. Most of the experience from early phase QT assessment is, however, still anecdotal, and there are few published examples (10, 33, 34). To estimate the risk of false negatives and false positives with ER analysis in this setting, simulation of a large number of small studies with 6 to 18 subjects on active treatment and 6 on placebo was performed in a recently published study by Ferber et al (35). Data from 5 TQT studies were used; 3 studies with moxifloxacin with peak $\Delta\Delta\text{QTcF}$ effect of 12.5, 14.0 and 8.0 ms, one study with ketoconazole with a smaller QT effect ($\Delta\Delta\text{QTcF}$ 7.6 ms) and one with a drug with a larger effect ($\Delta\Delta\text{QTcF}$ 25.9 ms). The criterion for negative QT assessment using ER analysis was the same as in this study. The rate of false negatives was 1% or lower with 6 subjects on active in 2 of the 3 moxifloxacin data sets and around 5% in the third. The simulation provides confidence in QT assessment in small studies, but must obviously be confirmed in real-life clinical trials. The rate of false positives (non-negatives) was below 20% with 9 subjects on active (6 on placebo) and near or below 10% with 12 subjects, which is important from a resource perspective; otherwise drug developers may have to repeat QT assessments in TQT studies for many drugs.

Replacing the TQT study

Based on our results and the extensive experience with ER analysis for evaluation of QT effects that has been gained over the last years, we believe that QT assessment in early phase clinical studies can be proposed as an alternative or replacement for the TQT study. The following criterion could then be used as a basis for a request for a TQT waiver:

- The upper bound of the 2-sided 90% confidence interval of the predicted placebo adjusted ΔQT_c should be below 10 ms at the highest clinically relevant plasma concentrations of the drug.

‘Clinically relevant plasma concentrations’ of the parent compound and abundant metabolites will often not be known at the time of an early phase clinical study. In case observed plasma levels in the early clinical study do not substantially exceed those later seen in patients with drug concentrations increased by intrinsic or extrinsic factors, it may not be possible to exclude QT effects at these higher concentrations. When ER analysis is used, there will always be plasma concentrations below which the study can be deemed negative. It is therefore important to emphasize that it is the predicted QT effect at the highest clinically relevant concentrations that will define the interpretation of the study (14, 36). This concern is analogous to the question of whether the selected supratherapeutic dose has been high enough in a TQT study.

The digital, continuous ECG waveforms from the study have been stored and will be made available for public research, under a governance structure similar to the CSRC ECG warehouse (37, 38).

Limitations: This study was designed to provide validation of QT assessment in early phase clinical studies, but there are important differences as compared to standard FIH studies; only two doses of each drug were studied in a partial cross-over design, whereas many dose groups are evaluated in a SAD study. Since precision of the slope of the ER relationship is largely driven by

Replacing the TQT study

the QT effect at high plasma levels (36), it does not seem likely that the results would be substantially different by adding groups with lower doses of the drugs.

Unlike many SAD studies, this study was not strictly of parallel design. To evaluate the impact of this difference in design, a post-hoc analysis was performed in which subjects who received placebo were excluded from the active group ('Parallel design' in *Table 3*); this had little effect on the results and all drugs still met their criteria.

It should also be acknowledged that there may be scenarios that are not easily defined prospectively and with more experience, refined criteria for model selection for ER analysis will be identified to cover exceptional cases.

Methods

Study design

The study was a 3-period, third-party blinded, randomized, placebo-controlled study in 20 healthy volunteers with the primary objective to evaluate the effect of the drugs on QTcF using exposure-response analysis. Secondary endpoints included pharmacokinetics and effects on other ECG intervals. The design and purpose of the study has been previously published (36). Each subject underwent 3 treatment periods, each with 2 consecutive treatment days and with at least 5 days of washout between periods. An incomplete block design resulted in each study drug being administered to 9 subjects and placebo to 6 subjects in separate periods. Six drugs with well-characterized QT effect were selected for the evaluation, five 'QT positive' - ondansetron (39), quinine (25, 26), dolasetron (40), moxifloxacin (41, 42) and dofetilide, and one 'QT negative' drug, levocetirizine (43, 44) (*Table 1*). The 5 QT positive drugs were chosen in discussions with FDA and selection criteria included toxicity profile allowing administration to healthy subjects,

Replacing the TQT study

lack of substantial heart rate effect, and the magnitude of QTc prolongation; the lower dose on Day 1 was recommended by the FDA to achieve a mean QTc effect representing the threshold of regulatory concern: 9 to 12 ms. A higher dose was added on Day 2, which was expected to result in $\Delta\Delta\text{QTc}$ of about 15 to 20 ms, to mimic a SAD study in which doses that generate plasma levels exceeding therapeutic concentrations are commonly evaluated, with the benefit of increasing the precision of the predicted effect (36).

Subjects were fasting overnight for 8 hours before dosing and for the first 4 hours post-dosing and thereafter received meals in a standardized way. Study treatments were blinded to subjects and the investigating site staff by using third party dosing and blindfolding of subjects.

The study protocol and Informed Consent Form were reviewed and approved by the Schulman Associates Institutional Review Board, Cincinnati, Ohio, USA.

ECG methodology

Continuous digital 12-lead ECGs were recorded from 1 hour prior to dosing on Day 1 to 24 hours after dosing on Day 2. Subjects were resting quietly in supine position for at least 10 minutes prior to and 5 minutes after timepoints for ECG and PK sampling. The same ECG and PK schedule was used for all treatments, designed to capture the effect near the time of peak plasma levels of all drugs. Twelve-lead ECGs were extracted from the continuous recording from a 5-minute window preceding the timepoints: -30, -20, and -10 minutes prior to first dose on Day 1 and 0.5, 1, 2, 3, 4, 6, 8, 12, and 24 hours after dosing on both days (i.e., 21 timepoints). ECG intervals were measured at a central ECG laboratory (iCardiac Technologies, Rochester, NY) fully blinded to study treatments, timepoints and subject identification. At each protocol-specified timepoint, QT and RR intervals were measured from up to 10 ten-second 12-lead ECG recordings

Replacing the TQT study

(i.e., 10 replicates). High-precision QT analysis (45) was performed on all analyzable beats in the 10 ECG replicates. All 'high-confidence' beats and all 'low confidence' beats found acceptable by manual review were included in the analysis. The QTc interval was derived using Fridericia's formula from the preceding RR interval and the QT interval in each beat and the median QTcF in each replicate was then calculated. The mean across medians from all replicates was used as the subject's reportable value at that timepoint. Measurement of PR and QRS intervals was performed semi-automatically on 3 sequential beats from each of the 3 replicates with the highest confidence score. The mean value was calculated for each replicate and then the mean of these were used as the subject's reportable value at the timepoint.

Pharmacokinetic methodology

All drug levels were analyzed using liquid chromatography (LC) with tandem mass spectrometric detection (MS/MS).

Ondansetron: Ondansetron and the internal standard, ondansetron-d5, were extracted from human plasma by liquid-liquid extraction. After evaporation under nitrogen, the residue was reconstituted and analyzed. The standard curve range was from 0.1 to 50 ng/mL for ondansetron using a plasma sample volume of 100 μ L (Covance Study No. 8231745).

Quinine: Quinine and the internal standard, quinine-d3, were extracted from human plasma by protein precipitation. After evaporation under nitrogen, the residue was reconstituted and analyzed. The standard curve range was from 500 to 15,000 ng/mL for quinine, using a plasma sample volume of 50 μ L (Covance Study No. 8295947).

Dolasetron: Hydrodolasetron and the internal standard, hydrodolasetron-d4, were extracted from human plasma by salt-induced phase separation extraction. After evaporation under nitrogen, the

Replacing the TQT study

residue was reconstituted and analyzed. The standard curve range was from 25 to 1,000 ng/mL for hydrodolasetron, using a plasma sample volume of 50 μ L (Covance Study No. 8295945).

Moxifloxacin: Moxifloxacin and the internal standard, moxifloxacin-d4, were extracted from human plasma by protein precipitation. The standard curve range was from 25 to 5,000 ng/mL for moxifloxacin, using a plasma sample volume of 50 μ L (Covance Study No. 8225508).

Dofetilide: Dofetilide and the internal standard, dofetilide-d4, were extracted from human plasma by liquid-liquid extraction. After evaporation under nitrogen, the residue was reconstituted and analyzed. The standard curve range was from 0.05 to 25 ng/mL for dofetilide, using a plasma sample volume of 100 μ L (Covance Study No. 8295950).

Levocetirizine: While levocetirizine is the *R*-enantiomer of racemic cetirizine, the method was achiral and designed to determine racemic cetirizine concentrations during sample analysis.

Levocetirizine and the internal standard, levocetirizine-d4, were extracted from human plasma by solid-phase extraction. The eluate was diluted and analyzed. The standard curve range was from 20 to 3,000 ng/mL for levocetirizine, using a plasma sample volume of 50 μ L (Covance Study No. 8295952).

Pharmacokinetic (PK) parameters (C_{max} , T_{max} and AUC) were calculated using standard non-compartmental methods for each active treatment, separately for Day 1 and Day 2. Parameters were obtained from time 0 h to 24 hours on each day with the exception of Day 1 on quinine, for which the time between the first and second dose (0 to 8 hours) of the drug was used. AUC was derived using the linear-log trapezoidal rule; values below the level of quantification were set to 0 throughout.

Data analysis and interpretation

The primary variable for the exposure-response analysis was the change-from-baseline QTcF (ΔQTcF), where the mean of the 3 pre-dose ECG readings on Day 1 was used as the baseline.

The concentration of the parent compound (for dolasetron, the main metabolite hydrodolasetron) was used as a covariate.

Investigation of hysteresis: Prior to model selection for the ER analysis, the absence of hysteresis was established. To detect hysteresis, individual $\Delta\Delta\text{QTcF}$ was computed as ΔQTcF minus the time-matched mean ΔQTcF of the placebo group. For each day, the time of the largest mean $\Delta\Delta\text{QTcF}$ (U_{\max}) was determined. If the largest mean $\Delta\Delta\text{QTcF}$ exceeded 5 ms at ≥ 3 timepoints, the time difference between U_{\max} and the T_{\max} of the drug level exceeded 1 hour, and the one-sided one-sample Wilcoxon test for the difference between $\Delta\Delta\text{QTcF}$ at T_{\max} and at U_{\max} was formally significant at the 1% level, it was concluded that hysteresis existed. In such a case, a PK model with an additional effect compartment was to replace the model described below.

Model selection: To assess the appropriateness of a linear model, normal QQ-plots for the residuals and plots of weighted residuals vs. concentration and vs. fitted values were produced. A model with a quadratic term in concentration was fitted and the quadratic term was tested on the two-sided 5% alpha level. In case of a significant quadratic term, nonlinear models, such as a log-linear model and an E_{\max} model were to be investigated and the primary model selected based on the Akaike Information Criterion and plausibility arguments.

Exposure response analysis: In the absence of hysteresis and unless the prespecified test procedure for linearity indicated otherwise, the primary analysis was based on a linear mixed-effects model implemented in R (www.r-project.org), Version 3.1.0 and the lme4 package, Version 1.1-7, with ΔQTcF as the dependent variable, drug plasma concentration as a continuous

Replacing the TQT study

covariate, treatment (active or placebo) and reduced time (i.e., time with all non-significant timepoints combined into one), as categorical factors, and a random intercept per subject within period. In each model, not more than 2 subjects contributed in 2 periods (i.e., to both the active drug and placebo). Data from the period under active drug were considered independent of data of the period under placebo within each of these subjects (i.e., different random intercepts were allowed for each period in these 2 subjects). In other words, each drug was analyzed as if the data came from a parallel group design. The reduced time variable was treated as categorical factor, representing the time elapsed since first drug administration (i.e., time spans both Day 1 and 2). All post-dose data from Day 1 and 2 were used. The degrees of freedom for the model estimates were determined by the Kenward-Rogers method (R package lsmeans version 2.10). From the model, the slope (i.e., the regression parameter for the concentration) and the treatment effect were estimated together with two-sided 90% CIs. A "reduced time" variable was determined from the placebo data using a linear mixed effects model with ΔQ_{TcF} as the dependent variable with time as factor, a random intercept per subject, and the fixed intercept set to zero. Only timepoints with an effect significant at the two-sided 10% alpha level in this model were retained; all other timepoints were assigned to a common level "Time 0".

The predicted mean ΔQ_{TcF} at the observed geometric mean C_{max} (i.e., the product with the slope estimate + treatment effect [active – placebo]) was calculated. Two-sided 90% CIs of the estimate were calculated using a bias-corrected nonparametric bootstrap procedure in the boot package, Version 3.1.11 with 3000 resamples and subject as the unit of resampling (46).

Resampling was done independently for the active and the placebo subjects/periods. For each resample, the model was fitted and the prediction was made at the geometric mean C_{max}

Replacing the TQT study

determined from the resampled data. The CI was determined from the distribution of resampled predicted values.

Criteria for QT assessment: Criteria for the ‘QT positive’ drugs were based on the predicted QTc effect of the lower dose and the criterion for the ‘QT negative’ drug was applied to the predicted effect of the higher dose.

To demonstrate a QT effect of the 5 ‘QT positive’ drugs:

- The upper bound of the two-sided 90% CI of the predicted mean $\Delta\Delta\text{QTcF}$ was to be greater than 10 ms at the observed geometric mean C_{max} on Day 1.
- The slope of the concentration/QTc effect relationship was to be statistically significant.

To exclude a QT effect of concern for the ‘QT negative’ drug (levocetirizine):

- The upper bound of the two-sided 90% CI of the predicted mean $\Delta\Delta\text{QTcF}$ was to be less than 10 ms at the observed geometric mean C_{max} on Day 2

$\Delta\Delta\text{QTcF}$ by timepoint: For each timepoint, an analysis of variance model was fitted with ΔQTcF as dependent variable and treatment (active or placebo) as factor and baseline QTcF as a covariate. From this model, the difference (active – placebo) was estimated with a two-sided 90% CI. Separate models were fitted for each treatment, all of them using the same placebo data. Change-from-baseline in heart rate, QTcF, PR, and QRS were calculated using descriptive summary statistics.

The Interdisciplinary Review team for QT studies at FDA received the full analysis data set and performed an independent analysis compliant with the prospectively agreed statistical analysis plan. The study was conducted between February and June 2014.

Replacing the TQT study

Study Highlights

What is the current knowledge on this topic?

Definitive assessment of a drug's effect on ECG intervals is typically performed in a designated stand-alone TQT study.

What question did this study address?

Can definitive ECG assessment be performed as part of a standard early phase clinical study, such as the First-in-Human study?

What does this study add to our knowledge?

The study, which was designed in collaboration with FDA, demonstrated that QT assessment using exposure-response analysis of data from a small study in healthy volunteers was able to detect mild QT prolongation at the level of regulatory concern and that a QT effect above 10 ms could be excluded for a drug with no underlying effect. The study thereby provides validation of the concept of definitive ECG assessment in early phase clinical studies.

How may this change clinical pharmacology and therapeutics?

The study demonstrates that ECG assessment in early phase clinical studies can be used as an alternative to a TQT study to exclude small QT effect by a new drug.

Acknowledgements

The authors would like to acknowledge Donna Kowalski, Astellas, Bela Patel, GSK, Dutta Santanu, Covance and Kuenhi Tsai, Merck for their contribution in regard to discussions on the statistical analysis of the study.

The study was funded by iCardiac Technologies, Inc., Rochester, NY, USA.

Conflict of Interest/Disclosure

BD holds stock and stock options in iCardiac Technologies. BS holds stock options in iCardiac Technologies.

Replacing the TQT study

Author Contributions

Darpo, Benson, Dota, Ferber, Garnett, Jarugula, Johannesen, Keirns, Krudys, Ortemann-Renon, Riley, Sarapa and Stockbridge designed the research.

Stoltz and Smith performed the research.

Ferber, Zhou, and Liu analyzed the data.

All authors wrote the manuscript.

Accepted Article

References

- (1) Barbey, J.T., Lazzara, R., Zipes, D.P. Spontaneous adverse event reports of serious ventricular arrhythmias, QT prolongation, syncope, and sudden death in patients treated with cisapride. *J Cardiovasc Pharmacol Ther* **7**, 65-76 (2002)
- (2) Honig, P.K., Wortham, D.C., Zamani, K., Conner, D.P., Mullin, J.C., Cantilena, L.R. Terfenadine-ketoconazole interaction. Pharmacokinetic and electrocardiographic consequences. *Jama* **269**, 1513-8 (1993)
- (3) Shah, R.R. The significance of QT interval in drug development. *Br J Clin Pharmacol* **54**, 188-202 (2002)
- (4) Shah, R.R. Drug-induced prolongation of the QT interval: why the regulatory concern? *Fundam Clin Pharmacol* **16**, 119-24 (2002)
- (5) ICH Harmonized Tripartite Guideline E14. The Clinical Evaluation of QT/QTc Interval Prolongation and Proarrhythmic Potential for Non-Antiarrhythmic Drugs. Available at: http://www.ich.org/fileadmin/Public_Web_Site/ICH_Products/Guidelines/Efficacy/E14/E14_Guideline.pdf. Accessed November 2014.
- (6) Darpo, B., Nebout, T., Sager, P.T. Clinical evaluation of QT/QTc prolongation and proarrhythmic potential for nonantiarrhythmic drugs: the International Conference on Harmonization of Technical Requirements for Registration of Pharmaceuticals for Human Use E14 guideline. *J. Clin. Pharmacol.* **46**, 498-507 (2006)

Replacing the TQT study

(7) ICH E14 Questions & Answers. Available at:

http://www.ich.org/fileadmin/Public_Web_Site/ICH_Products/Guidelines/Efficacy/E14/E14_QAs_R2_Step4.pdf . Accessed November 2014.

(8) Bouvy, J.C., Koopmanschap, M.A., Shah, R.R., Schellekens, H. The cost-effectiveness of drug regulation: the example of thorough QT/QTc studies. *Clin. Pharmacol. Ther.* **91**, 281-288 (2012)

(9) Darpo, B., Garnett, C. Early QT assessment - how can our confidence in the data be improved? *Br J Clin Pharmacol* **76**, 642-648 (2012)

(10) Rohatagi, S., Carrothers, T.J., Kuwabara-Wagg, J., Khariton, T. Is a thorough QTc study necessary? The role of modeling and simulation in evaluating the QTc prolongation potential of drugs. *J Clin Pharmacol* **49**, 1284-1296 (2009)

(11) Shah, R.R., Morganroth, J. Early investigation of QTc liability: the role of multiple ascending dose (MAD) study. *Drug Saf* **35**, 695-709 (2012)

(12) Zhang, J., Machado, S.G. Statistical issues including design and sample size calculation in thorough QT/QTc studies. *J Biopharm. Stat.* **18**, 451-467 (2008)

(13) Garnett, C.E. Value of evaluation concentration: QTc relationship in regulatory decision making. *Presentation at ASCPT 2012 Annual meeting. Workshop: Evaluation of concentration: QTc relationship in early clinical development: Is a thorough QT study necessary?* (2012)

(14) Garnett, C.E. et al. Concentration-QT relationships play a key role in the evaluation of proarrhythmic risk during regulatory review. *J Clin. Pharmacol.* **48**, 13-18 (2008)

Replacing the TQT study

- (15) Tornøe, C.W., Garnett, C.E., Wang, Y., Florian, J., Li, M., Gobburu, J.V. Creation of a knowledge management system for QT analyses. *J. Clin. Pharmacol.* **51**, 1035-1042 (2011)
- (16) International Consortium for Innovation and Quality in Pharmaceutical Development. <http://www.iqconsortium.com/> . Accessed November 2014.
- (17) Cardiac Safety Research Consortium. <https://www.cardiac-safety.org/> . Accessed November 2014.
- (18) Asenapine (Saphris). QT-IRT consult to NDA 22,117. Available at: http://www.accessdata.fda.gov/drugsatfda_docs/nda/2009/022117s000_MedR_P2.pdf. Accessed November 2014.
- (19) Citalopram (Celexa). FDA Drug Safety Communication: Revised recommendations for Celexa (citalopram hydrobromide) related to a potential risk of abnormal heart rhythms with high doses: Available at: <http://www.fda.gov/drugs/drugsafety/ucm297391.htm>. Accessed November 2014.
- (20) Dolasetron (Anzamet). US label. Available at: http://www.accessdata.fda.gov/drugsatfda_docs/label/2011/020623s009lbl.pdf. Accessed November 2014.
- (21) Ondansetron (Zofran). Drug Safety Communication - QT prolongation. Juen 2012. Available at: <http://www.fda.gov/Safety/MedWatch/SafetyInformation/SafetyAlertsforHumanMedicalProducts/ucm310219.htm>. Accessed November 2014.

Replacing the TQT study

(22) Ranolazine (Ranexa). US label: Available at:

http://www.accessdata.fda.gov/drugsatfda_docs/label/2012/021526s022lbl.pdf. Accessed November 2014.

(23) Sertindole. Advisory Committee briefing material for NDA 20-644, Psychopharmacologic Drugs Advisory Committee March 27, 2009. Available at:

<http://www.fda.gov/downloads/advisorycommittees/committeesmeetingmaterials/drugs/psychopharmacologicdrugsadvisorycommittee/ucm161904.pdf>. Accessed November 2014.

(24) Vandetanib. (Caprelsa) Clinical Pharmacology review April 2011. Available at:

http://www.accessdata.fda.gov/drugsatfda_docs/nda/2011/022405Orig1s000ClinPharmR.pdf. Accessed November 2014.

(25) Qualaquin (quinine sulphate). Clinical Pharmacology and Biopharmaceutics Review(s). Available at:

http://www.accessdata.fda.gov/drugsatfda_docs/nda/2005/021799s000_ClinPharmR.pdf. Accessed November 2014.

(26) Qualaquin (quinine sulphate). US label. Available at:

http://www.accessdata.fda.gov/drugsatfda_docs/label/2013/021799s023lbl.pdf. Accessed November 2014.

(27) Tsong, Y., Shen, M., Zhong, J., Zhang, J. Statistical issues of QT prolongation assessment based on linear concentration modeling. *J. Biopharm. Stat.* **18**, 564-584 (2008)

Replacing the TQT study

- (28) Wang, Y., Garnett, C. Response to letter to the editor: Statistical issues of QT prolongation assessment based on linear concentration modeling by Yi Tsong et al. *J Biopharm. Stat.* **20**, 689-692 (2010)
- (29) Shin, J.G. et al. Possible interethnic differences in quinidine-induced QT prolongation between healthy Caucasian and Korean subjects. *Br. J Clin Pharmacol* **63**, 206-215 (2007)
- (30) Vandetanib. (Caprelsa) US label October 2012. Available at:
http://www.accessdata.fda.gov/drugsatfda_docs/label/2012/022405s003lbl.pdf . Accessed November 2014.
- (31) Tikosyn (dofetilide). US label. Available at:
http://www.accessdata.fda.gov/drugsatfda_docs/label/1999/20931lbl.pdf . Accessed November 2014.
- (32) Bedaquiline. Anti-infective Drugs Advisory committee meeting November 28, 2012. FDA Briefing document. Available at.
<http://www.fda.gov/AdvisoryCommittees/CommitteesMeetingMaterials/Drugs/Anti-InfectiveDrugsAdvisoryCommittee/ucm329257.htm> . Accessed November 2014.
- (33) Malik, M., Hnatkova, K., Ford, J., Madge, D. Near-thorough QT study as part of a first-in-man study. *J Clin Pharmacol* **48**, 1146-1157 (2008)
- (34) Westerberg, G. et al. Safety, Pharmacokinetics, Pharmacogenomics and QT Concentration Effect Modelling of the SirT1 Inhibitor Selisistat in Healthy Volunteers. *Br J Clin Pharmacol* (2014)

Replacing the TQT study

- (35) Ferber, G., Zhou, M., Darpo, B. Detection of QTc Effects in Small Studies-Implications for Replacing the Thorough QT Study. *Ann. Noninvasive Electrocardiol.* Nov 4. doi: 10.1111/anec.12227. [Epub ahead of print] (2014)
- (36) Darpo, B. et al. The IQ-CSRC prospective clinical Phase 1 study: "Can early QT assessment using exposure response analysis replace the thorough QT study?". *Ann. Noninvasive Electrocardiol.* **19**, 70-81 (2014)
- (37) Kligfield, P., Green, C.L. The Cardiac Safety Research Consortium ECG database. *J Electrocardiol.* **45**, 690-692 (2012)
- (38) Kligfield, P. et al. The Cardiac Safety Research Consortium electrocardiogram warehouse: thorough QT database specifications and principles of use for algorithm development and testing. *Am. Heart J* **160**, 1023-1028 (2010)
- (39) Zofran (ondansetron hydrochloride). US label. Available at: http://www.accessdata.fda.gov/drugsatfda_docs/label/2012/020007s043lbl.pdf. Accessed November 2014.
- (40) Anzemet (dolasetron mesylate). US label. Available at: http://www.accessdata.fda.gov/drugsatfda_docs/label/2013/020623s010lbl.pdf,020624s023lbl.pdf. Accessed November 2014.
- (41) Avelox (moxifloxacin hydrochloride). US label: Available at: http://www.accessdata.fda.gov/drugsatfda_docs/label/2013/021085s057,021277s054lbl.pdf. Accessed November 2014.

Replacing the TQT study

- (42) Florian, J.A., Tornøe, C.W., Brundage, R., Parekh, A., Garnett, C.E. Population pharmacokinetic and concentration--QTc models for moxifloxacin: pooled analysis of 20 thorough QT studies. *J. Clin. Pharmacol.* **51**, 1152-1162 (2011)
- (43) Hulhoven, R., Rosillon, D., Letiexhe, M., Meeus, M.A., Daoust, A., Stockis, A. Levocetirizine does not prolong the QT/QTc interval in healthy subjects: results from a thorough QT study. *Eur. J. Clin. Pharmacol.* **63**, 1011-1017 (2007)
- (44) Xyzal (levocetirizine dihydrochloride). US label. Available at: http://www.accessdata.fda.gov/drugsatfda_docs/label/2012/022064s024,022157s008lbl.pdf. Accessed November 2014.
- (45) Darpo, B. et al. Improving the precision of QT measurements. *Cardiol. J.* **18**, 401-410 (2011)
- (46) Davison AC, Hinkley DV. Bootstrap methods and their application. Cambridge, UK: Cambridge University Press, 1997.

Figures

Figure 1

Observed change from baseline QTcF (Δ QTcF; red triangles, left y-axis) and plasma concentration (blue open circles, right y-axis) by timepoint on Day 1 and Day 2.

Panels: *A*: Ondansetron; *B*: Quinine; *C*: Hydrodolasetron; *D*: Moxifloxacin; *E*: Dofetilide; *F*: Levocetirizine and Δ QTcF for placebo (green boxes).

Arrows in panel B indicate times of dosing for quinine.

Figure 2

The predicted effect on Δ QTcF using concentration/QTc effect models. The solid black line with gray shaded area denotes the model-predicted mean placebo-adjusted Δ QTcF with 90% CI as a function of plasma concentration. The horizontal red lines with tick marks show the range of plasma concentrations divided into deciles. Red squares with vertical bars denote the observed arithmetic means and 90% CIs for the placebo-adjusted Δ QTcF within each plasma concentration decile. The placebo-adjusted Δ QTcF was derived from the individual Δ QTcF for the active subtracted by the mean predicted Δ QTcF for placebo from the model.

The blue box denotes the observed geometric mean C_{\max} on Day 1 (Day 2 for levocetirizine).

A: Ondansetron; *B*: Quinine; *C*: Hydrodolasetron; *D*: Moxifloxacin; *E*: Dofetilide; *F*:

Levocetirizine.

Table 1:
Study drugs and doses administered

Drug	Day 1	Day 2
Ondansetron	52 mg PO	32 mg IV by 15-minute infusion
Quinine	648 mg PO Q8 hours (3 doses on Day 1 and one in the morning of Day 2)	648 mg q8h x 4
Dolasetron	100 mg PO	150 mg IV by 15-minute infusion
Moxifloxacin	400 mg PO	800 mg IV by 60-minute infusion
Dofetilide	0.125 mg PO	0.25 mg PO
Levocetirizine	5 mg PO	30 mg PO

IV: Intravenous; PO: Per oral;

Table 2:

The largest mean $\Delta\Delta QTcF$ by timepoint and observed arithmetic mean C_{max} across treatments and study days

	Day 1			Day 2		
	$\Delta\Delta QTcF$ mean (90% CI) ms	C_{max} mean (SD) ng/mL	T_{max} mean (SD) hour	$\Delta\Delta QTcF$ mean (90% CI) ms	C_{max} mean (SD) ng/mL	T_{max} mean (SD) hour
Ondansetron	12.2 (7.1 to 17.4)	295 (94.6)	1.9 (1.1)	10.2 (4.0 to 16.5)	236 (56.7)	0.6 (0.2)
Quinine*	13.3 (4.2 to 22.4)	3,819 (1,296)	2.4 (0.53)	22.1 (13.3 to 30.9)	5,827 (2,107)	1.5 (0.8)
Dolasetron [#]	6.5 (1.5 to 11.5)	217 (50)	0.9 (0.2)	12.2 (3.8 to 20.5)	403 (88)	0.5 (0)
Moxifloxacin	11.9 (6.3 to 17.5)	1,929 (562)	1.3 (0.9)	33.4 (28.2 to 38.6)	4,663 (948)	0.9 (0.2)
Dofetilide	14.2 (9.0 to 19.4)	0.43 (0.1)	2.9 (1.45)	24.5 (15.7 to 33.3)	0.92 (0.27)	3.7 (1.8)
Levocetirizine	1.8 (-4.1 to 7.6)	160 (35)	0.8 (0.5)	3.1 (-4.6 to 10.7)	1,024 (203)	0.9 (0.5)

CI: confidence interval; $\Delta\Delta QTcF$: Placebo adjusted change from baseline $QTcF$;

*: After the 1st dose on Day 1, i.e. within 8 hours;

[#]: Hydrodolasetron pharmacokinetic parameters reported

Table 3The slope of the concentration/QTc relationship, geometric mean plasma levels and projected $\Delta\Delta$ QTc effect

Drug	Slope, mean ms per ng/mL	LB 90% CI	UB 90% CI	Width of 90% CI	Treatment effect ms	Geometric Cmax Day 1, ng/mL	Predicted $\Delta\Delta$ QTc effect mean, ms	LB 90% CI	UB 90% CI
Positive drugs									
Ondansetron	0.033	0.025	0.042	0.017	0.2	284	9.7	6.2	12.8
<i>Day 1 only</i>	0.032	0.022	0.043	0.021	0.3		9.5	7.2	13.5
<i>Parallel design n= 7**</i>	0.042	0.031	0.052	0.021	-0.6		10.2	6.8	13.5
Quinine	0.004	0.0034	0.0047	0.0013	-3.0	3623	11.6	6.8	17.1
<i>Day 1 only</i>	0.004	0.0031	0.0051	0.0020	-4.9		9.8	6.7	17.3
<i>Parallel design n= 7**</i>	0.0034	0.0027	0.0041	0.0014	-2.8		9.5	4.8	14.5
Dolasetron	0.021	0.013	0.028	0.015	3.1	211	7.4	3.0	11.0
<i>Day 1 only</i>	0.016	0.0008	0.032	0.031	3.3		6.8	3.4	11.6
<i>Parallel design n= 7**</i>	0.020	0.012	0.029	0.017	3.2		7.3	2.7	11.5
Moxifloxacin	0.0065	0.0059	0.0072	0.0013	2.3	1862	14.5	10.5	17.7
<i>Day 1 only</i>	0.0045	0.0025	0.0065	0.0041	3.4		11.7	10.6	17.9

<i>Parallel design</i> <i>n= 7**</i>	0.0065	0.0058	0.0072	0.0013	2.2	1708	13.3	9.6	17.0
Dofetilide*	22.2	18.9	25.6	6.7	1.1	0.42	10.5	6.3	14.9
<i>Day 1 only</i>	28.7	20.6	36.7	16.1	-0.9		11.3	6.1	14.6
<i>Parallel design</i> <i>n= 7**</i>	25.0	20.9	29.0	8.1	-1.1	0.40	8.9	5.1	13.9
Negative drug (Day 2)									
Levocetirizine	0.0014	-0.0013	0.0041	0.0054	0.7	1005 [#]	2.1	-2.3	6.1
<i>Day 2 only</i>	0.00042	-0.0032	0.0041	0.0073	1.6		2.0	-2.6	6.0
<i>Parallel design</i> <i>n= 6**</i>	-0.0015	-0.0046	0.0017	0.0063	1.8	1014	0.3	-4.7	4.2

CI: Confidence interval calculated using a bias-corrected nonparametric bootstrap procedure, which includes variability of C_{max}; LB: Lower bound; UB: Upper bound; Day 1 (Day 2 for levocetirizine): Single dose using Day 1 data only for QT-positive drugs and Day 2 data only for levocetirizine.

[#]: Geometric mean C_{max} on Day 2 for levocetirizine; $\Delta\Delta QTcF$: Placebo adjusted change from baseline QTcF.

**: For comparative purposes, parameters and predictions for dofetilide derived from a linear model are shown.*

*** : For each drug, subjects also dosed with placebo were excluded in this post-hoc analysis.*

Table 4**Largest placebo adjusted change from baseline PR**

	Largest $\Delta\Delta PR$					
	Day 1			Day 2		
	Mean (ms)	90% CI (ms)	Time (hour)	Mean (ms)	90% CI (ms)	Time (hour)
Ondansetron	2.5	-5.0 to 10.0	12	5.9	0.4 to 11.5	24
Quinine*	8.9	4.3 to 13.5	2	16.0	7.1 to 24.9	1
Dolasetron	4.1	-0.1 to 8.3	2	16.3	10.3 to 22.2	1
Moxifloxacin	0.8	-7.2 to 8.9	12	1.3	-3.8 to 6.3	24
Dofetilide	5.7	-1.3 to 12.6	12	3.0	-4.1 to 10.0	12
Levocetirizine	4.2	-5.2 to 13.6	6	2.3	-2.6 to 7.3	24

*: Including timepoints up to 8 hours post-dose only. Tmax: Mean peak plasma level by timepoint; $\Delta\Delta PR$: Placebo adjusted change from baseline PR interval

Accept

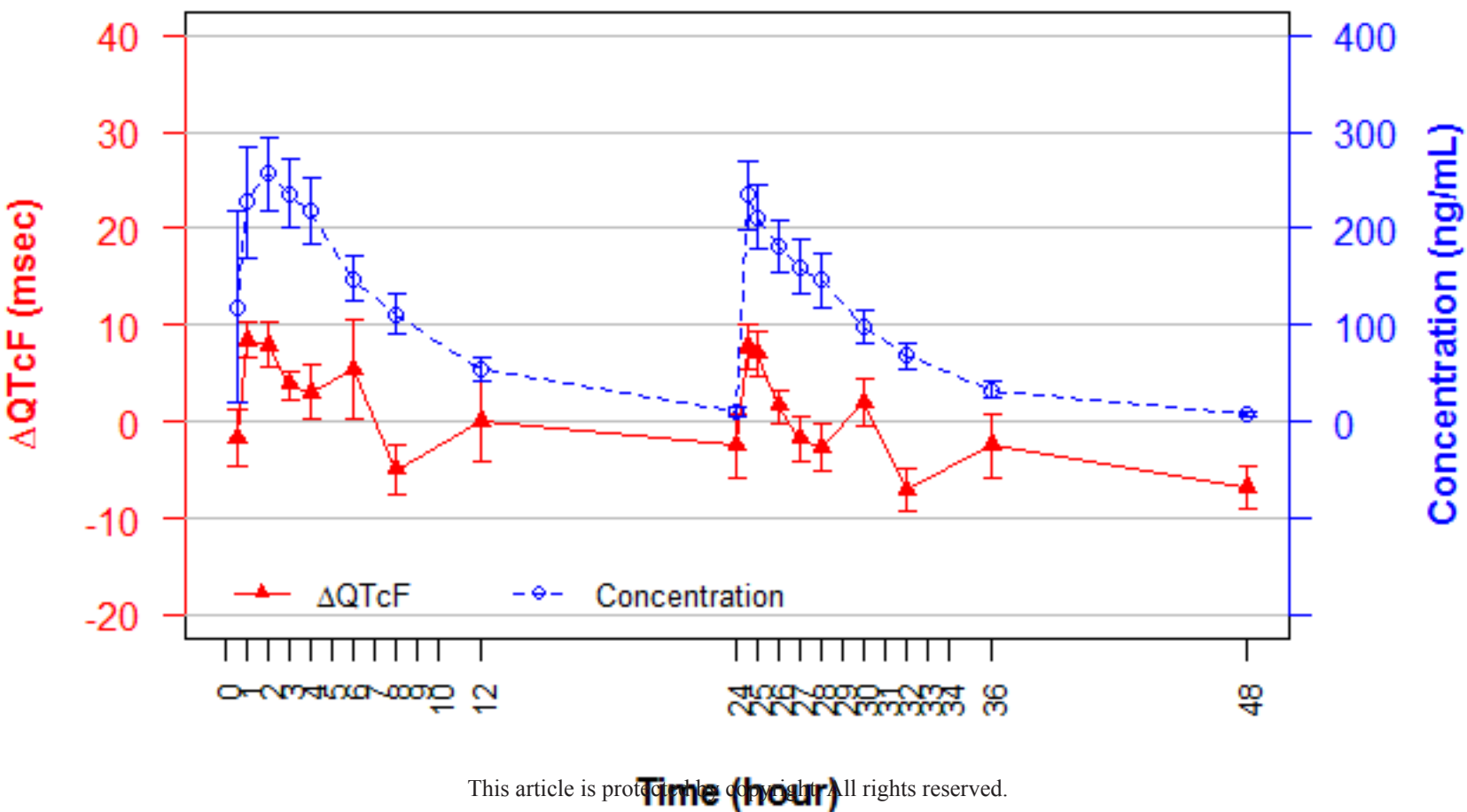
Table 5**Largest placebo adjusted change from baseline QRS**

	Largest $\Delta\Delta$ QRS					
	Day 1			Day 2		
	Mean (ms)	90% CI (ms)	Time (hour)	Mean (ms)	90% CI (ms)	Time (hour)
Ondansetron	0.7	-0.5 to 1.9	6	2.1	0.2 to 4.0	8
Quinine	4.0	2.4 to 5.7	2	7.7	3.7 to 11.6	2
Dolasetron	2.1	0.9 to 3.2	2	5.2	2.9 to 7.4	0.5
Moxifloxacin	1.0	-0.1 to 2.2	2	2.0	-1.2 to 5.1	12
Dofetilide	0.2	-0.9 to 1.3	2	0.6	-1.4 to 2.7	8
Levocetirizine	0.3	-0.8 to 1.5	12	-1.7	-4.7 to 1.4	0

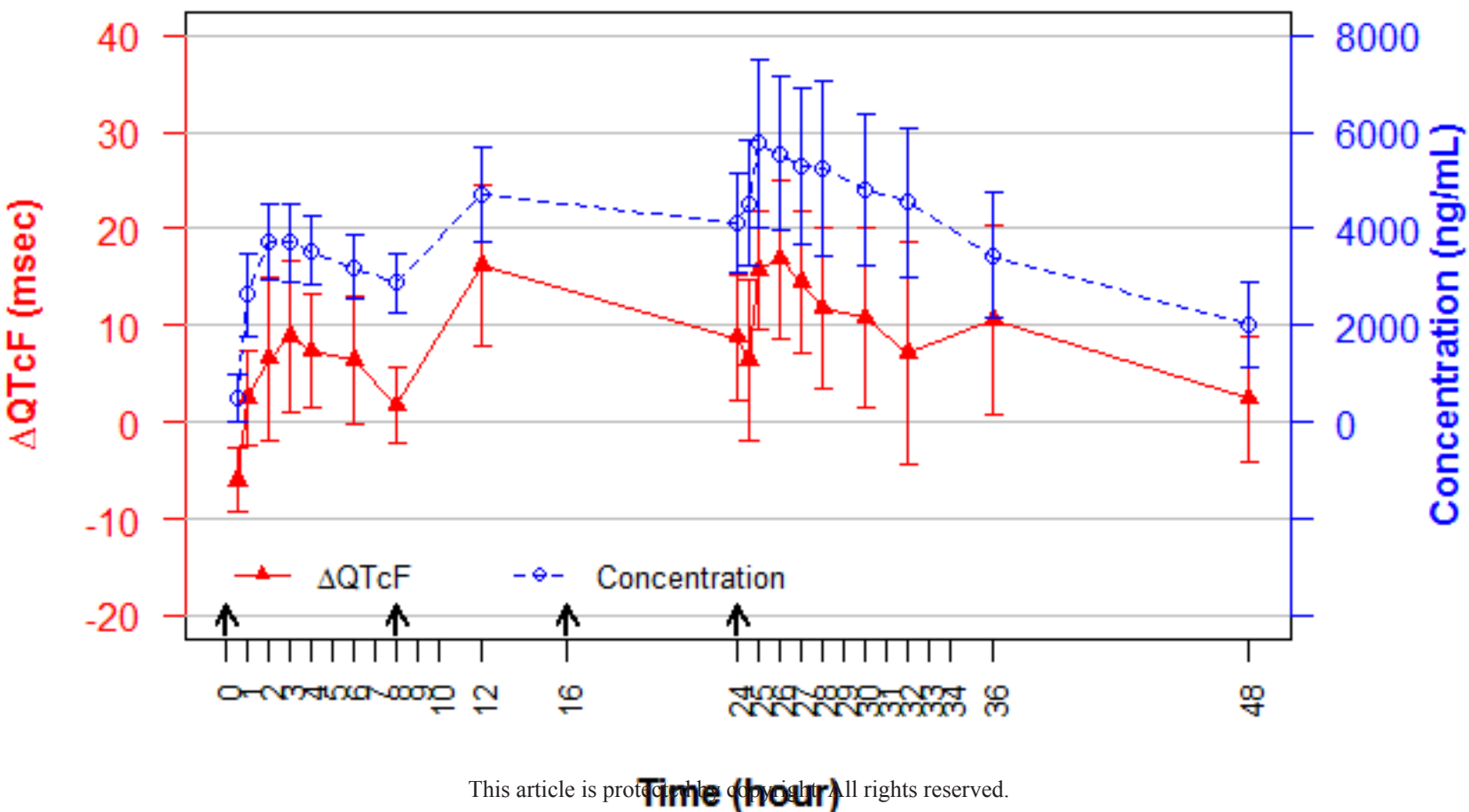
*: Including timepoints up to 8 hours post-dose only. Tmax: Mean peak plasma level by timepoint; $\Delta\Delta$ QRS: Placebo adjusted change from baseline QRS interval

Accepted

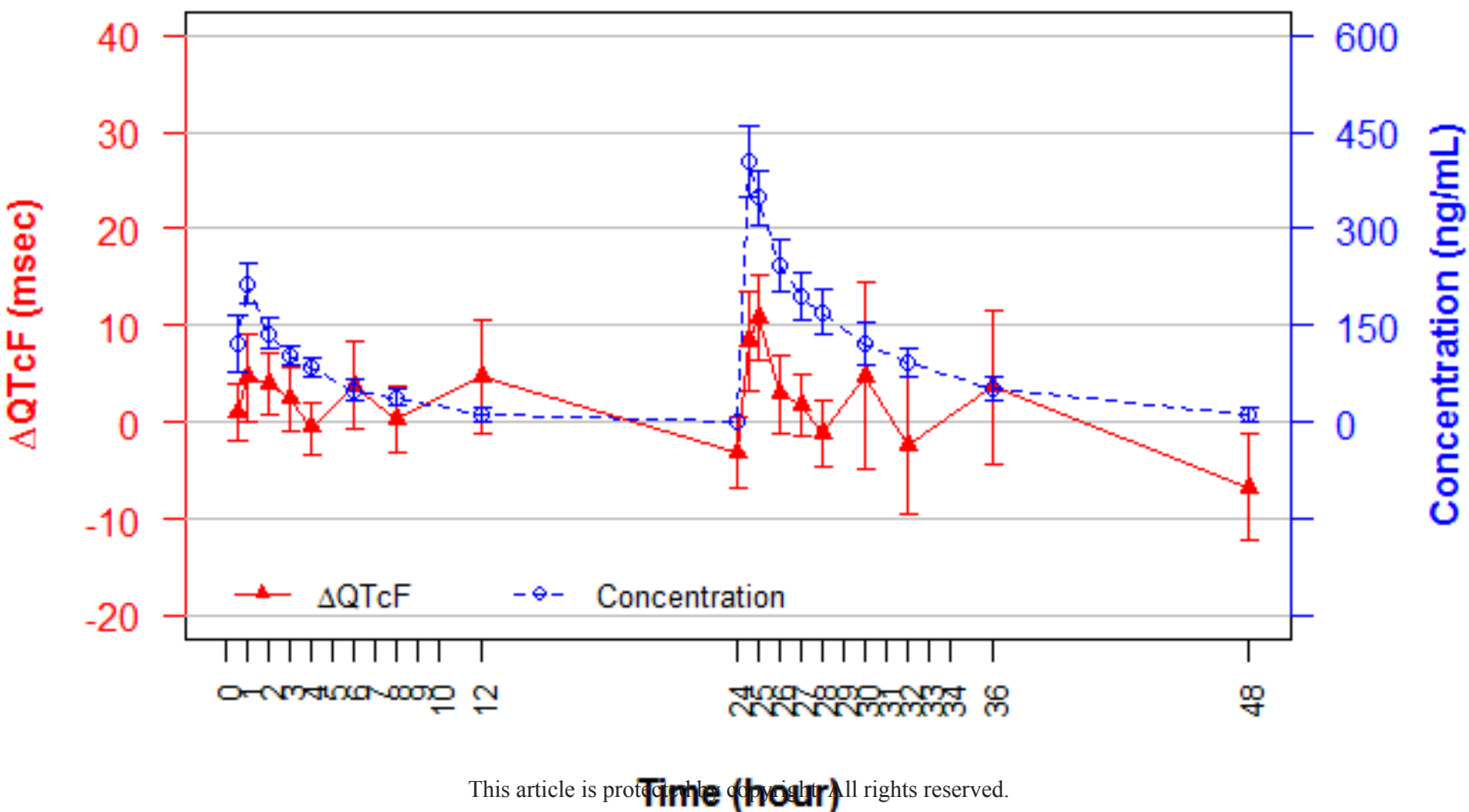
Ondansetron



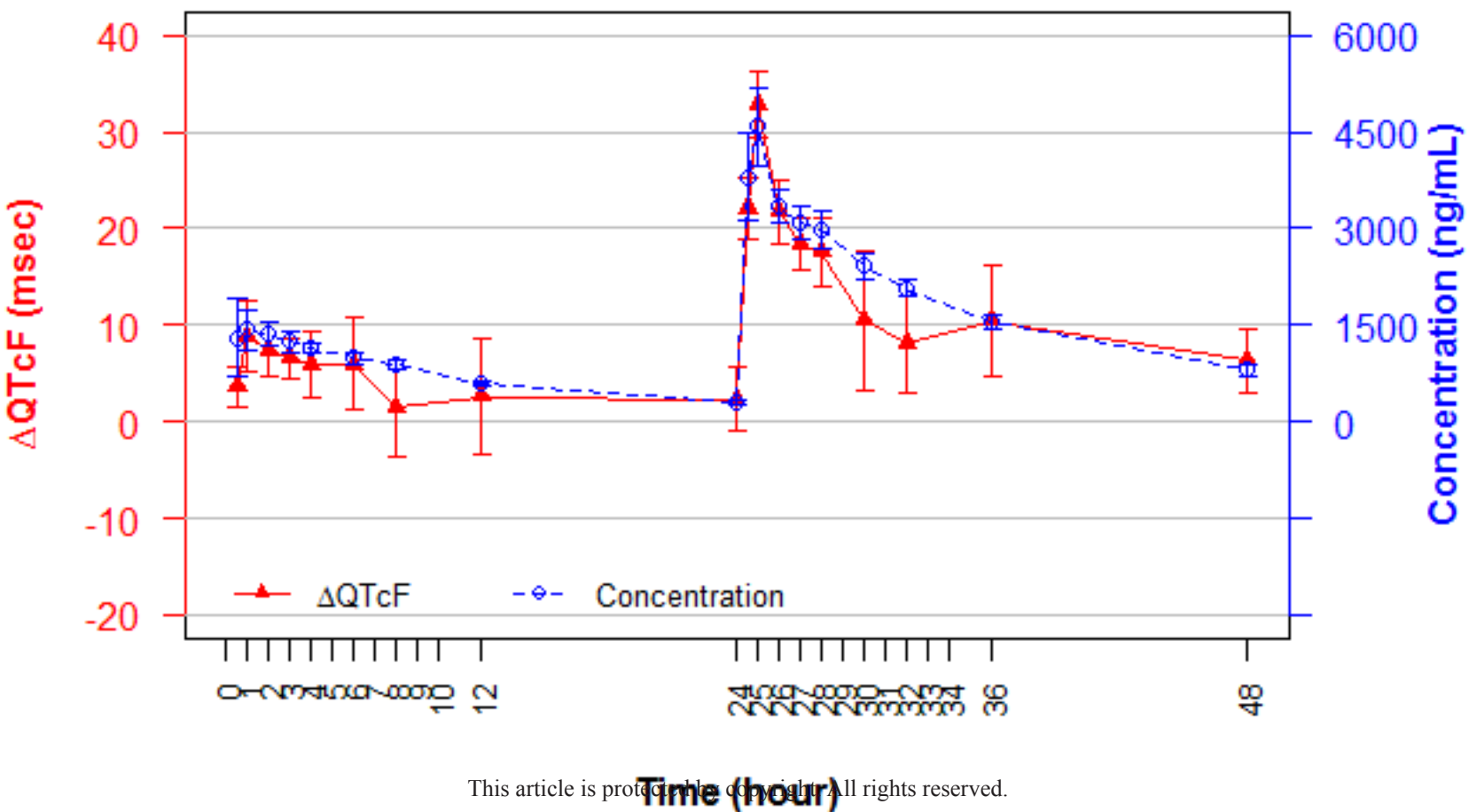
Quinine



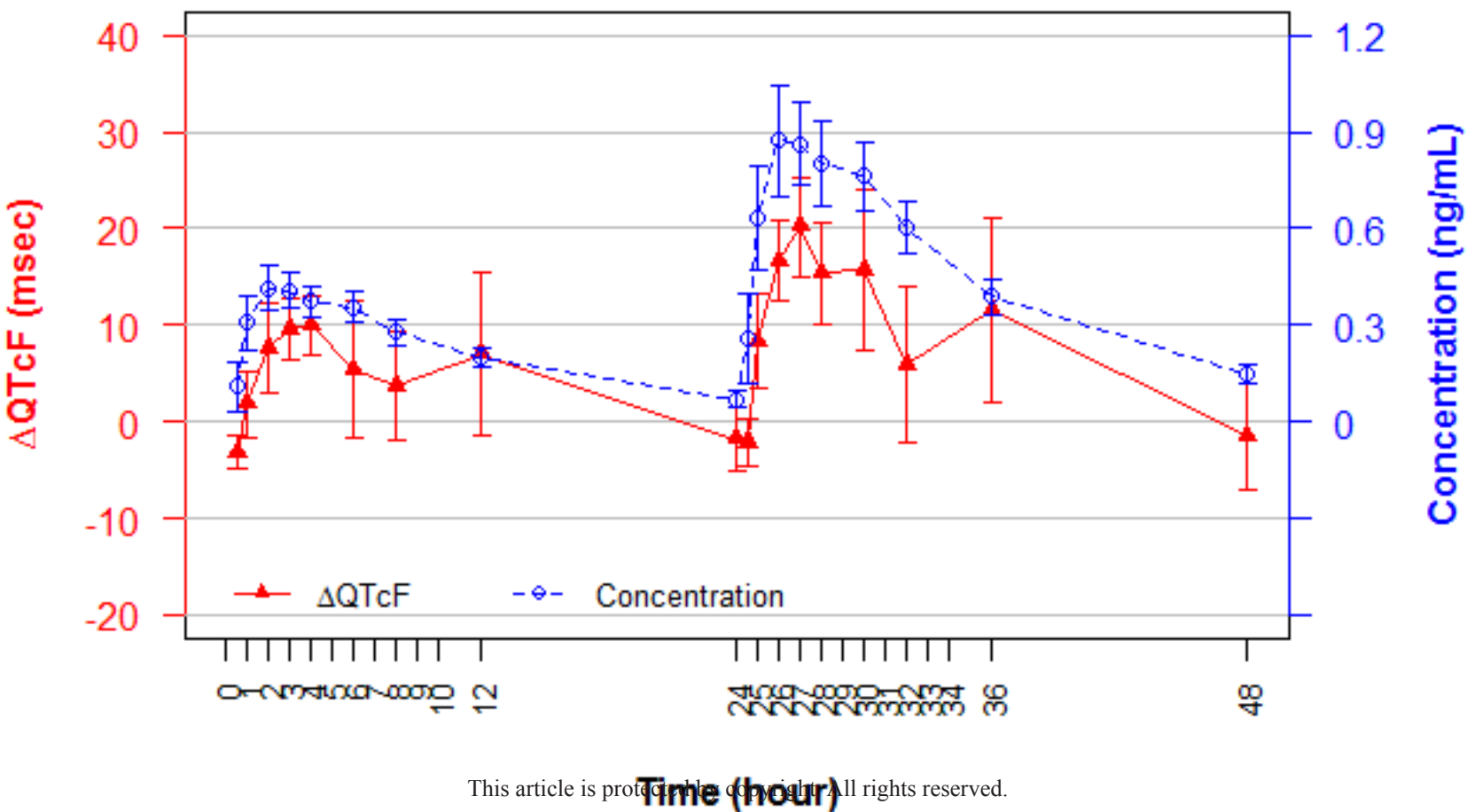
Hydrodolasetron



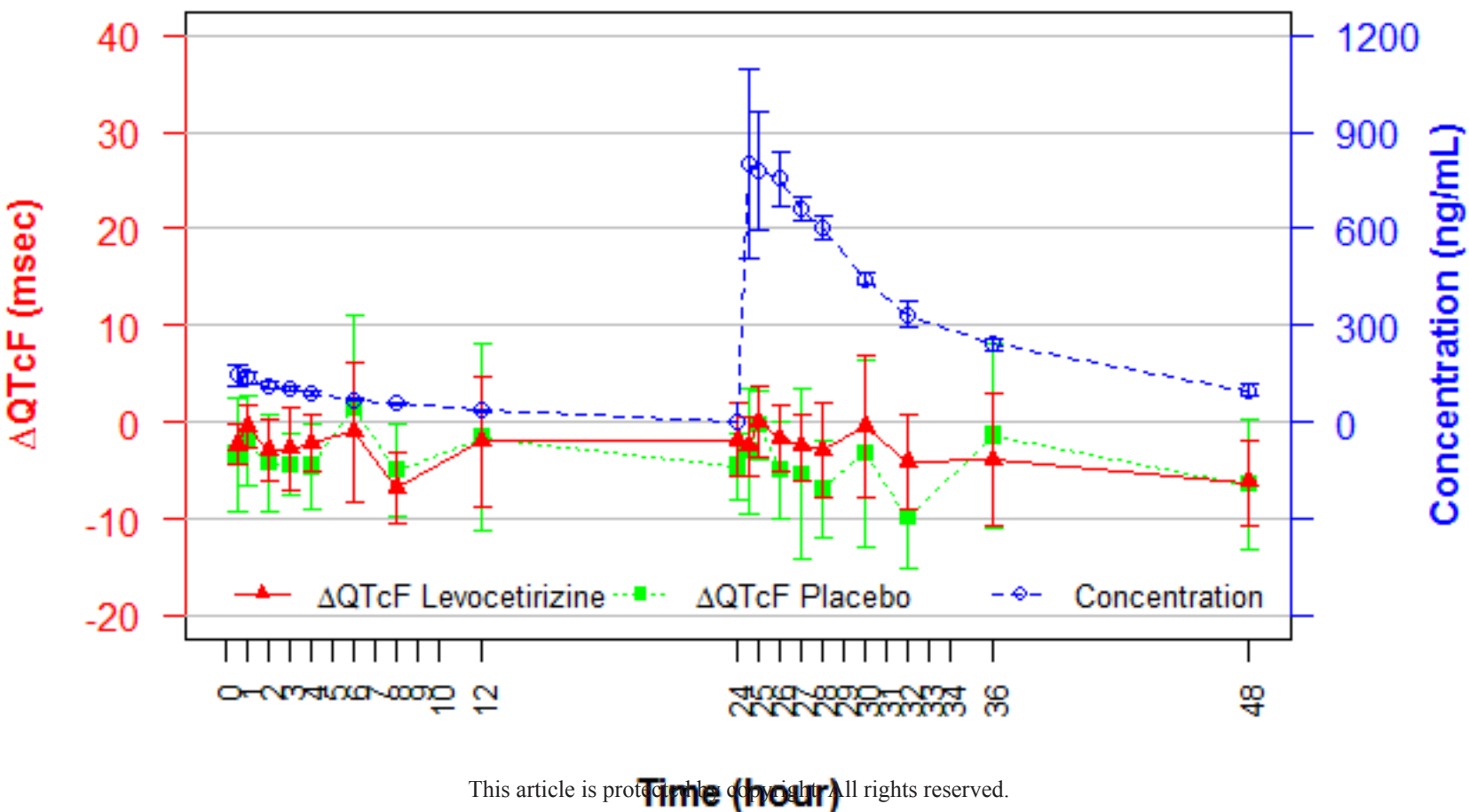
Moxifloxacin

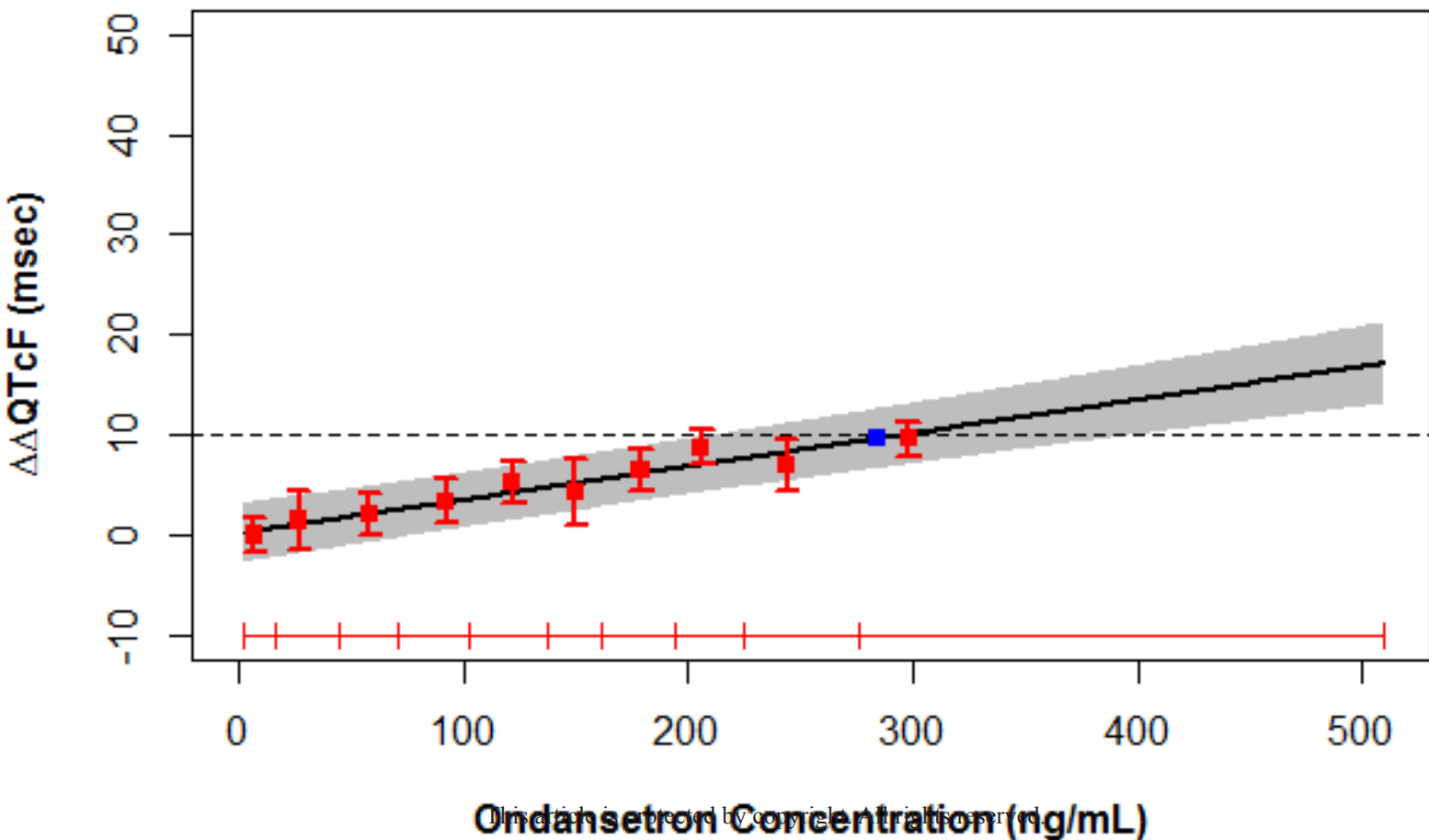


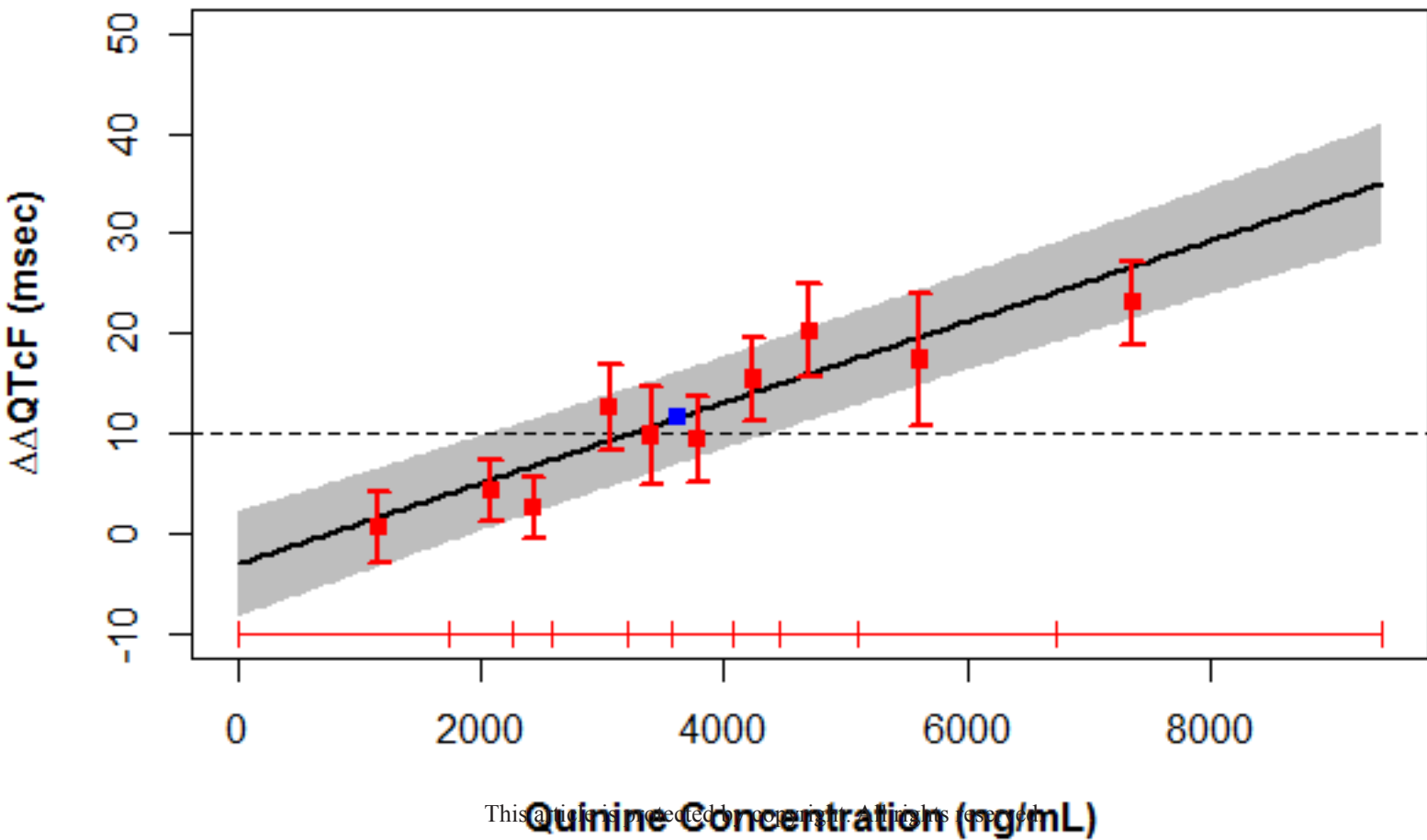
Dofetilide

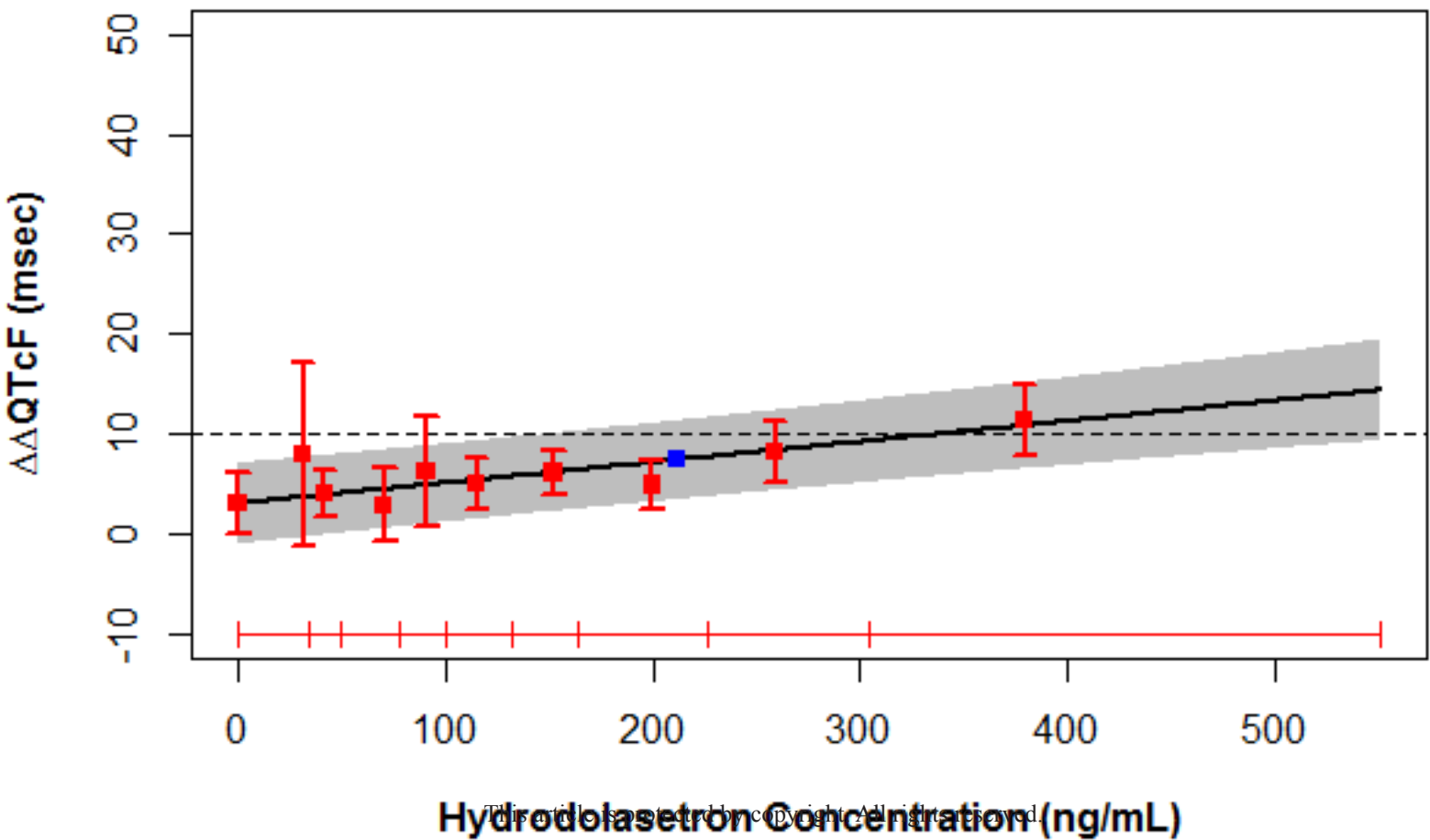


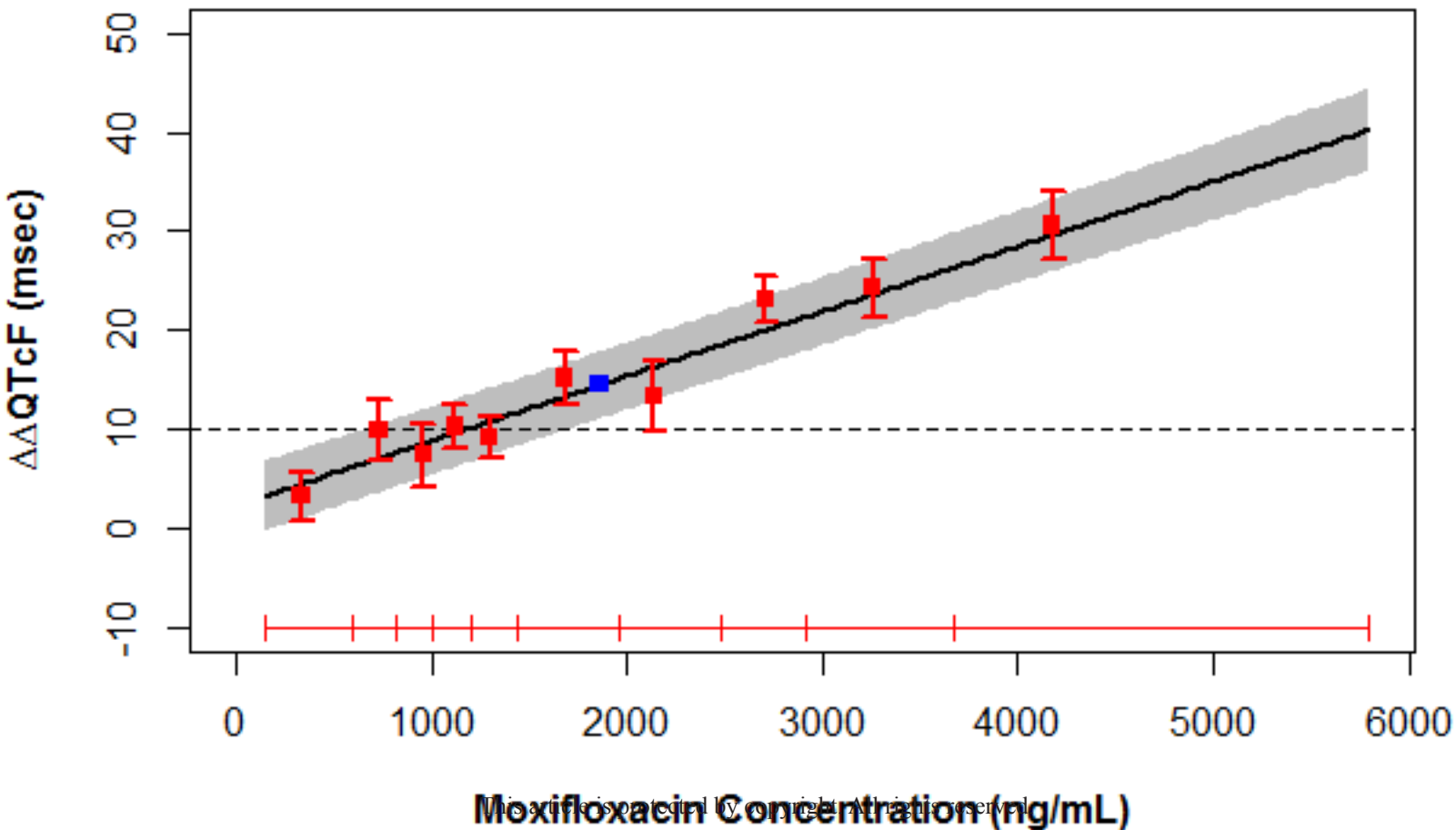
Levocetirizine



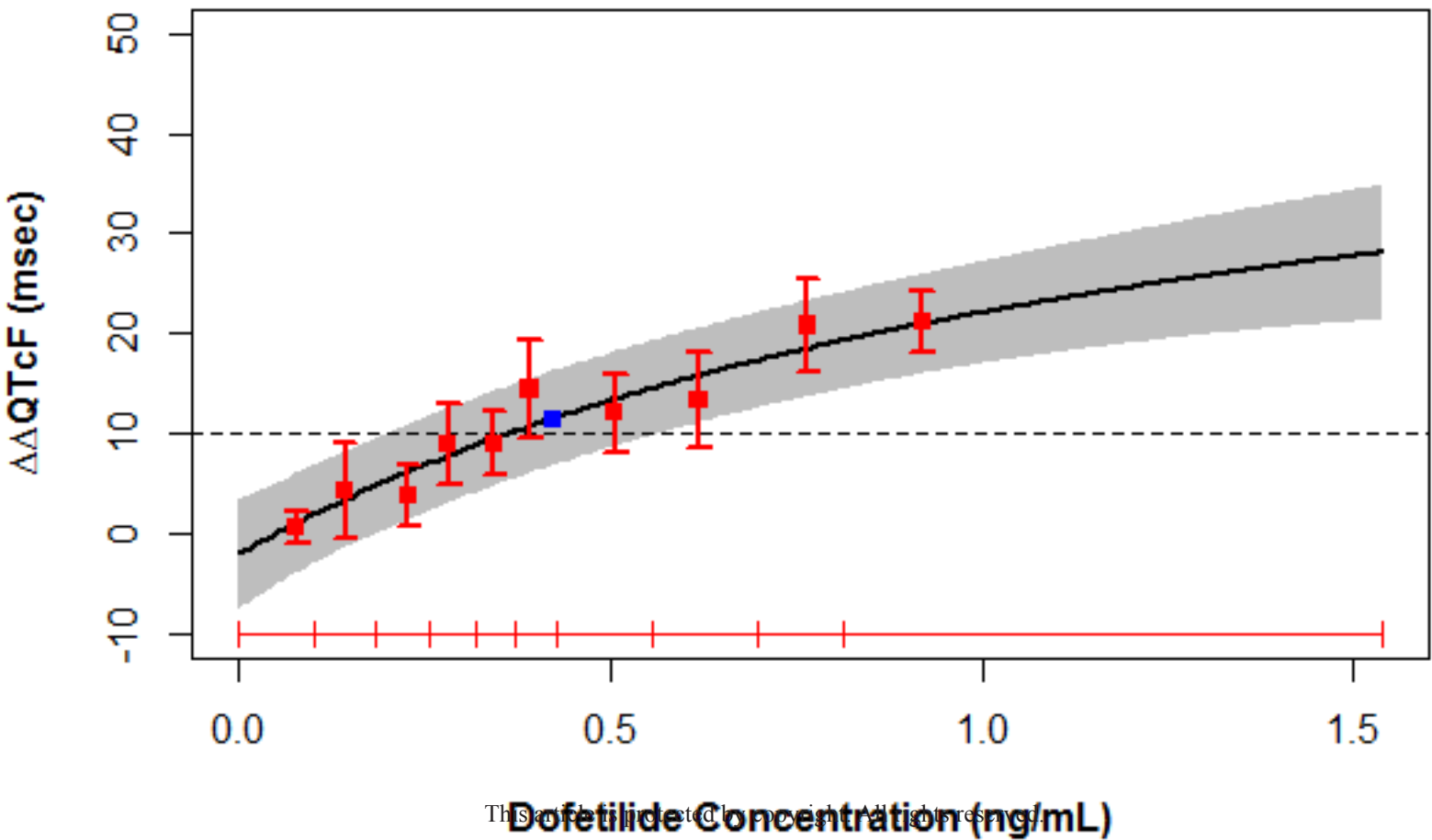
A

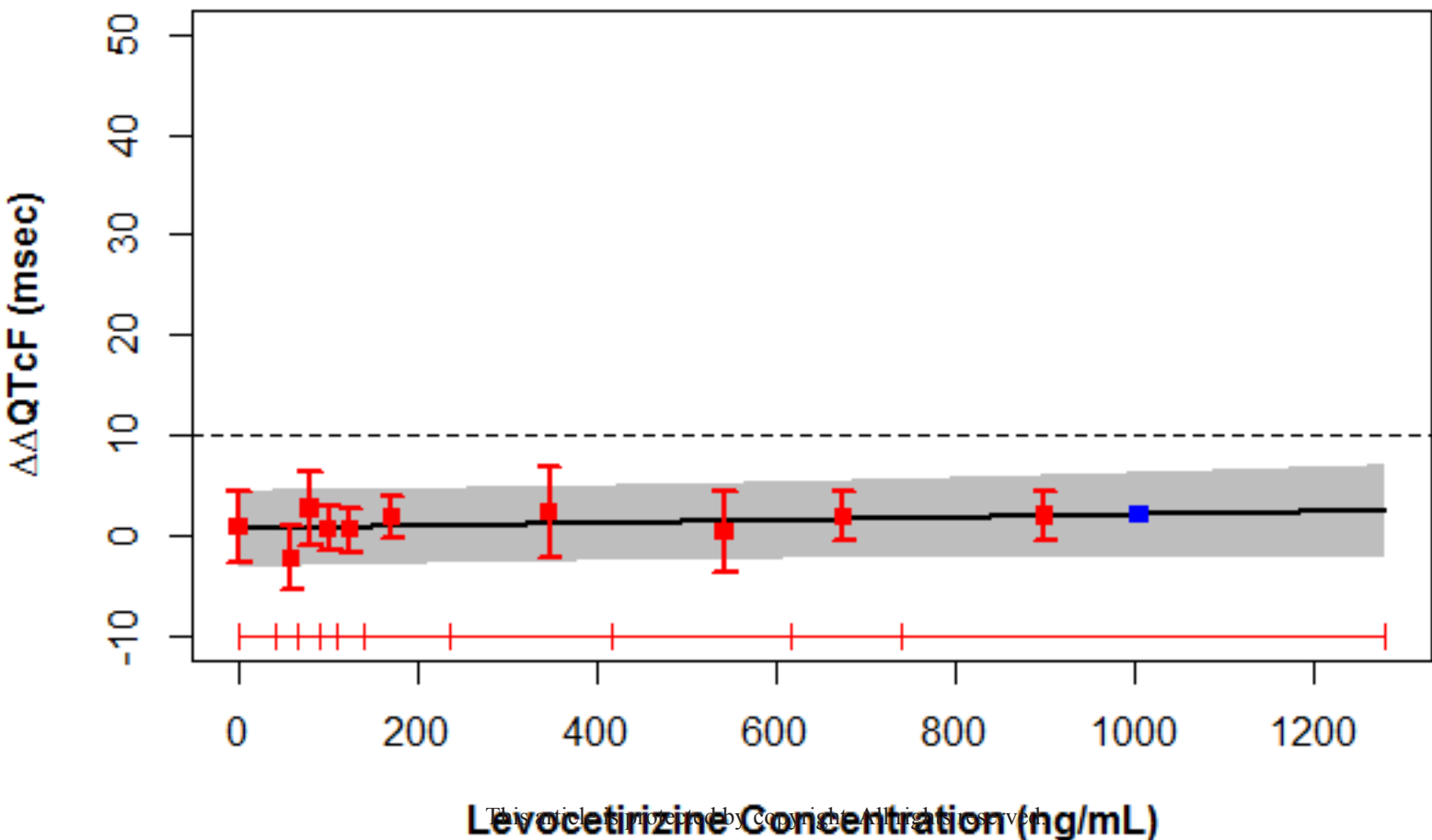
B

C

D

Moxifloxacin is a registered trademark of AstraZeneca. All rights reserved.

E

F

This article is protected by Copyright. All rights reserved.