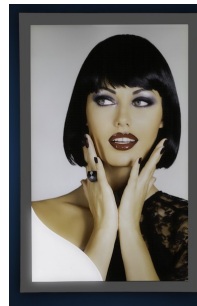


Ultra Thin Lightboxes



Snap Frame



Magnetic Frame

Features

- **Manufactured in the USA**
- **PANALUME** LED Edgelit Lightpanels
- Color Temperature – Standard is 5800K (white point on a computer monitor)
- Optional Color Temperatures – 3000K, 4000 & 5000K
- More than 34 LEDs per foot provides evenly lit panels from edge to center (<10%)
- Panels are resistant to ultraviolet light
- 60W 12v DC or 96W 24V DC Plug and Play Power supply included

Input Voltage	12VDC or 24VDC
Color Temperature	5800K (3000K, 4000K and 5000K available)
Lamp Life	50,000 Hours
Operating Temperature	-22°F to 104°F
Light Panel Material	Acrylic (polymethyl methacrylate)
Acrylic Thickness	8mm (5/16")
Size (min)	2" x 2"
Size (max)	60" x 120"
Environment	Indoor, Dry
Warranty	3 Year Limited Warranty
Safety Listings	UL cUL

Lightbox Types

Snap Frame (with Lightpanel)

The front snap frame adds approximately 2-1/2 inches to the overall dimension. If a 14-1/2 x 14-1/2 inch light panel is specified with a snap frame the visible illuminated panel will be 12 x 12 inches. Includes matte/glossy cover sheet and mounting holes. The snap frame is made of 6063 anodized aluminum.

Magnetic Frame (with Lightpanel)

The magnetic frame adds a perfectly flush border around the lightpanel and holds the acrylic face in place. Requires a suction cup to lift and remove the acrylic face. Includes mounting holes. Minimum border thickness is 1-5/16 inch.

ETCH STYLES

Utilizing the top manufacturing methods (CNC router and CNC laser). Our panels are beautifully balanced in appearance and brightness.

Dual Line

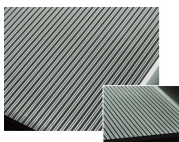
This is the most common and cost-effective method of etching our lightpanels. The lines run perpendicular to the LEDs. This method provides extremely even illumination across the face of the panel.

Special Line Patterns

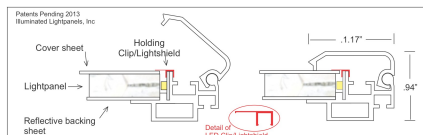
Other special line patterns may be used to maximize the illumination on the panels and to maintain even illumination across the panel without noticeable fading in the center of large panels.

Exceeding the operating temperature values may damage the LEDs by reducing the lifespan, lumen output, and/or adversely impact color consistency. It is recommended adequate airflow and heat sinking be taken into consideration in the installation and application of this product. Improper thermal management may lead to premature product failure and void the warranty.

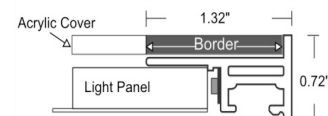
CROSS SECTIONS – Not to size or scale. For reference purposes only.



Dual Line Etch Lightpanel



Snap Frame with Lightpanel



Magnetic Frame with Lightpanel