

# Bethlehem Lutheran Church

Volume 56 Issue 9

October, 2016

*O Lord, how manifold are your works!  
In wisdom you have made them all;  
the earth is full of your creatures.  
Yonder is the sea, great and wide,  
creeping things innumerable are there,  
living things both great and small.  
These all look to you to give them their food in due season;  
when you give to them they gather it up,  
when you open your hand, they are filled with good things*  
*Psalm 104:24-28*

The timeless beauty of the psalmist's poetry is especially fitting as we enter the autumn harvest season. The ancient writer perceived the providential hand of God at work in the wondrous diversity of life, the vastness of the sea, and the ordered rhythms of nature. It is a vision of the wonder of God's sacred creation – a vision we need in our time.

In October we remember another poet of creation's wonder, St. Francis of Assisi. In his song, "All Creatures of our God and King," Francis recognized the beauty and bounty of creation as the revelation of God's grandeur and goodness:

*Sing brother wind, with clouds and rain  
you grow the gifts of fruit and grain:  
Alleluia, alleluia!  
Dear sister water, useful, clear  
make music for your Lord to hear.*

The last lines praising water, "useful, clear" are notable as we in southern California endure another year of drought. The need for conservation and preservation of this precious gift should be especially clear to us, and yet we find it difficult to make the changes necessary to limit our consumption.

But there is another path. Implied in both the psalmist's and Francis' words is the promise that if we look at our world with the eyes of wonder and faith, we will perceive the providential presence of God. Just as the manifold diversity of God's creation is a testament to God's wisdom, so in wisdom, God created us. As we sing in preparation for the meal we call "Holy Communion," we join with wind and sea, sun and moon, with earth and all her creatures, in a great, unending hymn of praise. Seeing ourselves as one with all God's creatures becomes the transforming vision empowering us to be good stewards of God's creation.

Peace,

Pastor Richard

## Stewardship Emphasis Begins in October

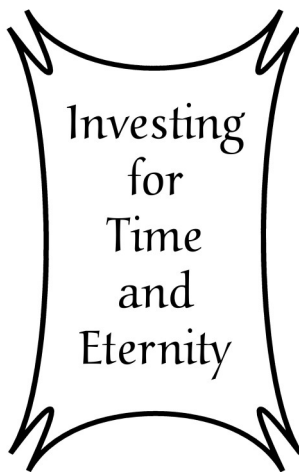
The Stewardship Emphasis in preparation for the calendar year 2017 is titled **"Investing for Time and Eternity."**

It will be based on Mathew 6:20-21 – "But store up for yourselves treasures in heaven, where moth and rust do not destroy, and where thieves do not break in and steal. For where your treasure is, there your heart will be also."

The campaign will emphasize how as managers and stewards we use our time, talents and treasures to do what God has called us to do in the ministry of the local church as we "seek first the kingdom of God." This Emphasis will begin the First Sunday of October.

It will consist of a Newsletter article, mailings to our homes plus bulletin inserts and temple talks on four Sunday mornings. It will culminate on **"Harvest Celebration Sunday,"** October 30<sup>th</sup>, 2016, when we will submit our **Response Cards** and **Time and Talent Sheets**.

Please give prayerful consideration as to how you can best give of your time, talents and financial resources to help Bethlehem meet its mission to share the Gospel of Jesus Christ.



*"Like good stewards of the manifold grace of God, serve one another with whatever gift each of you has received." (1 Peter 4:10)*

## “Investing for Time and Eternity”

“Investing for Time and Eternity” is the theme of this year’s annual stewardship emphasis. Be honest. When you first saw or heard this year’s theme, didn’t your thoughts immediately turn to money? After all, that’s what “investing” is all about. Right?

As we’ll see in various ways throughout this year’s program, “investing” **does** involve money. But it’s not limited to money. Investing also includes other resources that God has given to us, including time and talents.

Robert G. Lee, a well-known pastor for many years in Memphis, wrote,

If you had a bank that credited your account each morning with \$86,400 that carried no balance from day to day, allowed you to keep no cash in your account, and finally every evening canceled whatever part of the amount you had failed to use during the day, what would you do? Draw out every cent — of course!

Well, you have such a bank, and its name is “Time.” Every morning, it credits you with 86,400 seconds. Every night it rules off — as lost — whatever of this you have failed to invest to good purpose. It carries no balances. It allows no overdrafts. Each day, the bank named “Time” opens a new account with you. Each night it burns the records of the day. If you fail to use the day’s deposits, the loss is yours.

In other words, when it comes to time, it’s use it or lose it! And how we use it determines whether it becomes an investment or is simply used up for this life only. Jesus said we are to seek first God’s kingdom and His righteousness. When we use our time to do that, when we make God’s work a priority in the use of our time, we are making a wise investment that will pay eternal dividends.

The same is true of the talents, gifts and abilities God has given us. We can figuratively bury them in the sand and refuse to use them in the Lord’s service. That’s what happens in many churches and even sometimes in this church. In most churches, regardless of size, 80% of the work is done by 20% of the people. One pastor expressed it so distinctly when he lamented, “As much we could use additional giving from God’s people, our greatest problem is not money. We just can’t get anybody to do anything.”

So “investing for time and eternity” includes how we use our “time” and “talents.” It also includes the use of our “treasure.” We are managers and stewards, not owners. God owns it all! When we give, we are simply giving back to God that which rightfully belongs to God.

In his excellent essay entitled, “Cost and Worth,” Chuck Swindoll wrote,

The difference between handling our money wisely or foolishly is largely determined by the interplay between these two forces. Obviously, we have spent wisely when the cost is eclipsed by the worth. . . . That is why, in the long run, we can usually determine a person’s scale of values by the things he or she purchases. Or to use the words of Jesus, “For where your treasure is, there your heart will be also.”

And then he concluded with this powerful presentation:

Think about Sundays — your church life and the motivation you receive. Think about your children and their future. And their children’s future. Think about your neighborhood — unreached individuals by the hundreds. Think about the possibilities of radio or television outreach, perhaps a Christian school, enlarged missionary outreaches, room to grow, room to park! What’s it worth?

Deciding whether something is worth the cost requires intense, effective, prevailing prayer, as well as the hard work of objective thinking. And then it requires courage to act on God’s clear direction.

As you consider your time, your talents and your treasure, will you be one who is “investing for time and eternity” by courageously stepping out by faith in response to God’s direction in your life?

## Martin Luther: When Lightning Struck

Martin Luther (born as Martin Luder, later he called himself Luther) was born on November 10, 1483 into an extremely tense world with great changes waiting around the corner.

Luther's father was the son of a farmer and shortly after Martin's birth moved his family to Mansfeld to try to improve the family's financial situation by mining copper. He was successful and by 1491 the Luder's were one of the most respected families in Mansfeld.

Martin attended the Latin school in Mansfeld. In 1497 he went to Magdeburg where he attended a boarding school then in 1498 went to Eisenach to live with relatives and attend the parish school there.

Hans Luther, Martin's father hoped to help his son by sending him to law school to become a lawyer and have a secure future. In 1501 Martin entered the University of Erfurt, one of the best German universities at the time, where he received his Baccalaureate in 1502 and his Master's degree in 1505.

The event that radically changed the course of Luther's life took place near Stotterheim on July 2, 1505. Luther had recently completed a Master's degree and started his law studies at the University of Erfurt. He was on his way back to Erfurt after visiting his parents when he was caught in a terrible thunderstorm a few hours outside of Erfurt. Lightning struck near him and he was thrown to the ground by the air pressure it created. At this moment he called to Saint Anne: "I will become a monk!" To his father's disgust and anger, Luther honored his solemn promise; he had one last part with university friends on July 16 and the next day he entered the Black Monastery in Erfurt to become a monk.

## Fall Christian Education

**Fall Adult Education** - join us on Sundays at 9:00 am in the Fireside Room as we study Luther's Small Catechism.

**Mondays at 7:00 pm** in the Sanctuary there is a study and discussion of World Religions, currently focusing on Buddhism. Please join us.

## Parish Life

*Welcome to Fall!*

We now have the publication schedules for the 2016-2017 programs for the Carpenter Performing Arts Center, the La Mirada Theatre for the Performing Arts, the Cerritos Center Performance Highlights and the LA Phil-Walt Disney Concert Hall. We also have the Magic of Christmas starring the Young Americans. There will be eight scheduled shows for December 9, 10, 11, 14, 15, 16, 17, and 18. Please stop by and see us on the Patio and let us know if you are interested in any of the programs so tickets can be ordered.

Please mark your calendars for Sunday, October 30th for a Lutheran Potluck in celebrations of Reformation Sunday. Sign up will be on the Patio for you to bring your favorite dish to share. Luncheon will be in Bachman Hall after our church services.

## Men in Mission Meeting

The next Bethlehem Men-In-Mission meeting will be on **Saturday, October 1<sup>st</sup>**, 2016, at 9:00 A.M in the Fireside Room. We will be studying "Luke's Gospel to the Gentiles" from the Master Builders Bible for Men. The reading for this week will be Chapter 8:1 thru Chapter 10:37 with discussion on verses 10:25-37 about the Good Samaritan. On **Saturday, October 15<sup>th</sup>**, the men will be assisting with the set-up and take down activities for the WELCA Apple Festival Bazaar.



Interested in playing handbells? Join us at 6 p.m. on Thursdays beginning on October 13th. The ability to read music is helpful but not required. Please contact Heidi Kracy if you are interested in participating.



## GOLFERS SAVE THE DATE – "SCRAMBLE" GOLF TOURNAMENT:

There is an excellent opportunity to participate in a "Scramble" golf tournament on Monday, October 10, 2016, at the Vineyard Golf Course in Escondido. All proceeds will benefit the Lutheran Retreats Camps and Conferences (LRCC) that maintain two camps at Yoli Jawa/Luther Glen Conference Center and El Camino Pines providing outdoor ministry for Southern California. First Tee Time will be 12:15 P.M. After September 25 the fee is \$150 per golfer. The fee includes green and cart fees, BBQ dinner, raffle, on-course contests, entry into putting contest and a donation to LRCC. If you have any questions please contact Dale Retrum at (714) 527-4337.



W.E.L.C.A. News

October 2016

Women's Bible Study

**When God Forgives the Guilty**  
**Session 2: Jesus and the Evil Eye**



WELCA Board

The next meeting of the WELCA Board will be held **Sunday, October 30<sup>th</sup>**. For more information, contact Dianna Reynolds. **This will be a combined Board meeting for departing Board members and newly voted in Board members and will include lunch.**

FAITH Circle

Meets **Tuesday, October 4<sup>th</sup>** beginning at 9:30 a.m. in the Fireside Room. The hostess will be Margie Moeller with Bible Study by Marynell Wolfe. For questions and details, call Faith Circle leader, Arlene Pollard.

PHOEBE Circle

Meets **Tuesday, October 11<sup>th</sup>** beginning at 6:30 p.m. hosted by Christina Watson, 11262 Weatherby Rd., Los Alamitos. For questions and details, call Dianna Reynolds. All Women of Bethlehem are welcome.

**Sunday Morning**

**Coffee & Cookies**



Thank you to Men in Mission for providing coffee and cookies in the month of September. Phoebe Circle will be responsible for the month of October.

**Women's 2016 Theme**

**"Serving with Joy"**



WELCA's Calendar of Events

**Saturday, October 15<sup>th</sup> –**

**43<sup>rd</sup> Apple Festival Bazaar**

**Sunday, October 30<sup>th</sup> –**

**General Meeting and Bazaar Expenditure Meeting**



**Coming Soon! Bethlehem's 43<sup>rd</sup>  
Apple Festival Bazaar**

**October 15, 2016**



**November 4<sup>th</sup> and 5<sup>th</sup>**

**Pacifica WELCA Convention  
At Bethlehem Lutheran Church**

**Save the Date!**

**Tuesday, December 6<sup>th</sup>**

**WELCA Christmas Gathering and  
General Meeting**

*Check out Pacifica Partners on line*

[www.pacificawomen.org](http://www.pacificawomen.org)

*click on news & events*

Join the Pacifica Synod  
Women of the ELCA  
On Facebook.





# 43rd Annual Apple Festival Bazaar 2016

Sat. October 15 8am to 1pm

Bethlehem Lutheran Church

Chairpersons: Dianna Reynolds & Christina Watson

## DEPARTMENT:

## HEAD CHAIRPERSON(S)

Kitchen

Dianna Reynolds & Janice Hunt

Gourmet/Bakery

Debby Gustafson

Addie's Attic

Johanne Hansen & Jeanne Sandvig

New Treasures

Marianne Sakowski & Camille Riach

Handmade Crafts

Marjorie Moeller

Personalize Ornaments

Liz Nehrenberg

Setup/Teardown

Men in Mission

Lynn's Book Nook

Erika & Katrina Gary

Cashiers

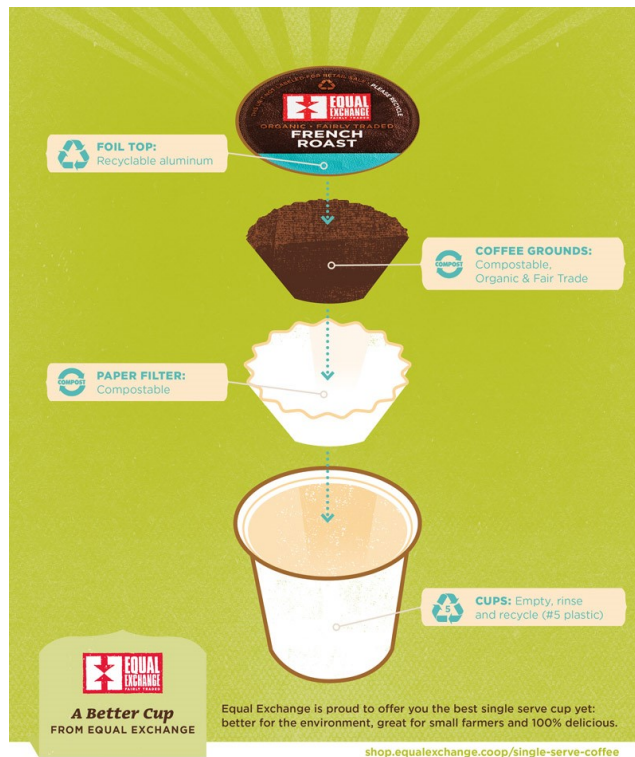
Andrea Campbell, Diane Clark

Advertising

NOTE: You may begin bringing your "Treasures" on Sunday October 9<sup>th</sup> Please get all your donations in by Thursday Oct. 13<sup>th</sup> to allow time to sort and price.

NEW THIS YEAR: If you bring a large item and it does not sell, please be prepared to pick it up by Sunday Oct. 16<sup>th</sup>.

Thank you, Christina and Dianna



## Fair Trade Coffee, Tea, etc.

We continue to offer three choices for the Equal Exchange Single Serving Coffee:

Organic Breakfast Blend

Organic French Roast

Organic Unwind Decaf

From the Equal Exchange Blog:

"We're no strangers to environmental issues, and we've been paying attention to the conversation about waste that surrounds typical, disposable K-cups. Because sustainability is important to us, and we know it's important to you, we researched many manufacturing options to find the best, most environmentally friendly cup and packaging available. What we found is really exciting: a cup that is **#5 recyclable plastic** with a **recyclable aluminum lid** and an **88% compostable filter**. This is a big step forward from most cups on the market, and we intend to follow the latest developments in single serve packaging in order to bring you the best."

For the complete article:

<http://equalexchange.coop/blog/drink-a-better-k-cup-with-equal-exchange-single-serve-coffee>

*Not compatible with KEURIG® VUE® or 2.0 Brewing systems*

The graphic gives you a better idea of how you can recycle the single serving pods.

The coffee is available for purchase on the patio after the worship service or from the church office during the week (Mon - Thurs.).

# SCHOOL



# SUPPLIES



## “God’s work, Our hands” report:

On Sunday September 11, 2016 many Lutheran Churches thru-out the entire ELCA of which we have 10,000 had a special work day service project. Bethlehem Lutheran committed to participate within our Pacifica Synod’s “Son and Surf Conference”. Our Social Ministry Committee decided to collect school supplies (2500 items) for Lutheran World Relief-“Project Promise School Kits”. We made up 125 kits. Thank you to all that helped as we shared God’s love in our community and put our Faith into action. A special “LITANY OF BLESSING FOR SCHOOL KITS” was led by Pastor Rollefson after a wonderful pot-luck luncheon fellowship time. SPECIAL THANKS also given to Thrivent Financial Action Team for a \$250.00 grant to purchase additional school supplies, postage to LWR for shipping costs and refreshments (cakes). These kits will be delivered to an in-gathering pick-up site (St. Olaf’s Lutheran Church, Garden Grove, CA) on October 18 and then shipped to one of two LWR storage warehouses and then sent out as needed around the world.

Thank You Everyone!  
Social Ministry Committee  
Andrea & Bob Campbell and Crew





## Lutheran Social Services-Long Beach Community Care Center Monthly Report

Dear Bethlehem Family and Friends,

As we continue our monthly request for in-kind food donations in 2016 we are asking you for your continuing help during **October** for **Cereals, Peanut Butter** (small jars) **any canned vegetable or fruit or cup of fruit or applesauce** currently needed daily. Continuous donated items of all food items especially with pop tops, clothes and socks (new or gently used) are always needed.

Thanks again for helping to keep our Lutheran Social Service cupboard (Pastor's Pantry in Narthex) full. Lutheran Social Services (LSS) Long Beach and the people and families served daily in their Ministry always appreciate your kindness, care and compassion.

Bob, Andrea and crew  
Social Ministry Committee

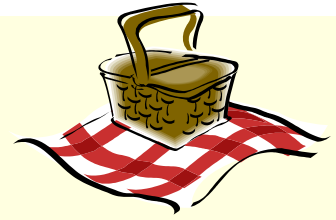


**\*\*\*\*\*HELP\*\*\*\*\***

**SPECIAL REQUEST as FALL, WINTER is fast approaching –  
IN NEED OF WARM KNITTED SCARVES, HATS AND GLOVES-ALL SIZES**



# Judy's Kitchen



**Thank you for being a part of the Bethlehem Service:**

On Saturday, September 17<sup>th</sup> at Judy's Kitchen we served a total of 46 lunches. We served Green Chile Chicken enchiladas, green salad, chips and orange slices. We began at about 10:00 a.m. and we were done by 12:30. Special thanks to Dawn Rentch for helping to prepare this meal along with serving. Thank you also to the large Bethlehem group of volunteers that showed up to help. They included: Janice Hunt, Joan Ebersold, Bruce and Debby Gustafson, Dale and Sandy Retrum, Susan Schneider, Ken Watson, Aiden Sandvig, Alice Roop, and grand-kids Kayla and Jaden, and Sue Hearn.

Thank you again to WELCA for donating the funds from the Bazaar expenditures to fund the lunch expense.

It is a joy to work alongside you all. See you all next June!

Dianna Reynolds  
Judy's Kitchen Coordinator





Jay & Diana Campbell	10/13/2012
John & Caroline Sisk	10/15/2010

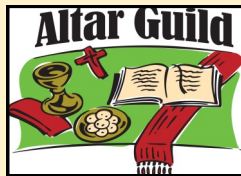
10/1 Frank Gary	10/7 Jane Clausen	10/8 Janice Hunt
10/8 Jeff Moeller	10/8 Richard Rollefson	10/9 James Toth
10/12 Jack Campbell	10/13 Sienna Martin	10/14 Lois DeForest
10/15 Betty Jones	10/18 Diana Campbell	10/18 Sigrun Borneo
10/20 BJ Stevenson	10/21 Paul Haglund	10/21 Erin Warnock
10/22 Eric Dobberteen	10/23 Pam Tipich	10/24 Alicia Buezis
10/25 Charlotte Driskill	10/26 Krissy Retrum	10/27 Joyce Payne
10/27 Charlie Toth	10/27 Allison Warnock	10/27 Sharon Zarkos



Gladyce Ackerman	Keresey Dillon	John La Barbera	Rich Schultheis
Julie Anderson	Laura Duke	Joan Lee	Mary Seibert
Elaine Asbury	Joan Ebersold	William Lewis	Amy Sisk
Denise Baalke	Doug Evans	Erin Lopez	Dorothy Sideris
Amy Bachman	Judy Frazier	Jessica McIntire	Charlotte Sohl
Shirley Bell	Katrina Gary	Pete Miller	Leslie Summers
Colleen Bidwell	Rick Gary	Sandy Miller	Ed Sutton
Arthur Brandon	Dr. Steve Graham	Terry Morriss	Joyce Tarver
Charlie Buezis	Jason Guerin	Michael Murray	James Taylor
Luelle Buezis	Bruce Gustafson	Linda Nygard	Ann Tegtmeier
Elinor Blum	The Bryan Halverson Family	Coler Pearce	Steve Tegtmeier
Andrea Campbell	Joe Harris	Andrew Pritchard	Alyssa & Jurrian Terpstra
Bob Campbell	The Hashimoto Family	Dale Retrum	Allen Thunselle
Laurie Carpenter	Diana Hayden	Nick Riley	Hank Van Zant
Gloria Clara	Donna Hoffman	Bill Ritz	Elizbeth Waddell
Linnea Clayton	Genevieve Jenkins	Louise Ronchetto	Sandy Wasky
Etta Bjornson Connell	Betty Jones	Jason Sakowski	Tom Watkins
Maxine Cornwell	Julie Kizziar	Valerie Sanchez	Hal Wolfe
Sara DeWeese	Linda Kjenstad	Lorie Schnebelie	

## Thanks to These People for Serving in October

	Reader	Cantor	Ushers	Counters
10/2	Jim Martin	John Buezis	George & Marsha Egbert Harold Snell Christina Watson	George Egbert Marsha Egbert
10/9	Dianna Reynolds	John Buezis		Lulu Meyer Paul Meyer
10/16	Debby Gustafson	John Buezis		Dick Hansen Alice Roop
10/23	Marsha Egbert	John Buezis		Caryl Harris Joyce Payne
10/30	Johanne Hansen	John Buezis	Christina Watson	Dale Retrum David Retrum



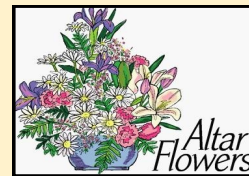
10/2

10/9 Shirley Campbell

10/16

10/23 Alice Roop

10/30 Christina Watson



10/2

10/9 Martin, M. Moeller

10/16 Egbert, Harris

10/23 Stevenson, Tegtmeier

10/30 Riach

Toth, Wolfe