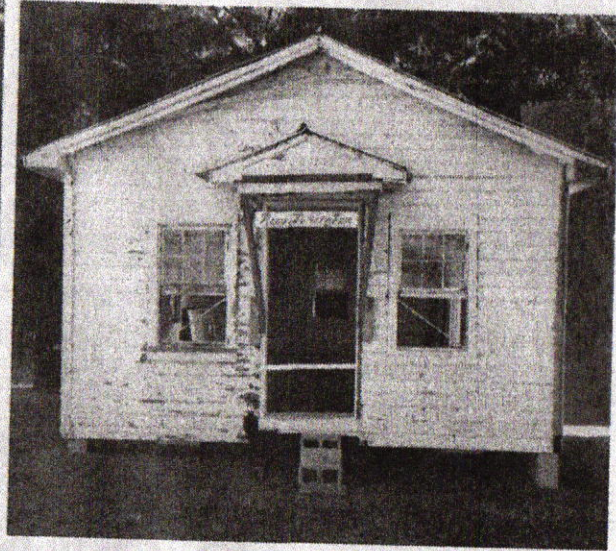
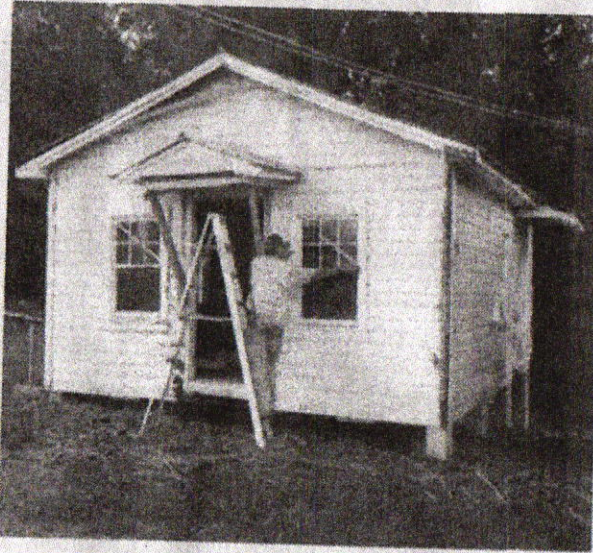


# The Northport Gazette

October 19th, 2016



## New Lexington Relocated to Shepherd Hill; Pearl-Frances Chapel Transformation to Begin

The charming historic New Lexington voting house was relocated on October 6th, 2016 from Highway 43 North across from Big Al's Restaurant to its new home on Shepherd Hill, 13222 Fondren Road, Northport, Alabama in Samantha and will begin its transformation into Pearl-Frances Chapel. Named in memory of The Williamson Siblings' grandmothers, Pearl Williamson and Frances Ke-

aton.

When complete, with steeple and cross, the chapel will make a perfect venue for an intimate, country wedding, vow renewal, baby dedication or any special occasion with family and friends.

It is our hope that Pearl-Frances Chapel will provide a dedicated place for our community to stop in for special prayer needs or to have

a quiet, private moment with Our Lord and Savior and that it will serve to strengthen our community.

For more information call Larry @ (205) 361-2957, Ricky @ (205) 394-2857 or Becky @ (205) 233-3794.

The Pearl-Frances is a ministry of The Johnny Williamson Good Shepherd Foundation, a 501(c)(3) faith-based organization.