

Mouse Anti-BARX1 [MD193]: MC0440, MC0440RTU7

Intended Use: For Research Use Only

Description: BarX1 is a member of the Bar subclass of homeobox transcription factors. Studies of the Mouse and chick homolog suggest the encoded protein may play a role in developing teeth and craniofacial mesenchyme of neural crest origin. The protein may also be associated with differentiation of stomach epithelia. Down-regulation of Barx1 promotes HCC migration, invasion and metastasis, whereas up-regulation of Barx1 inhibits HCC migration, invasion and metastasis. The loss of Barx1 expression represents a prognostic biomarker in human HCC.

Specifications

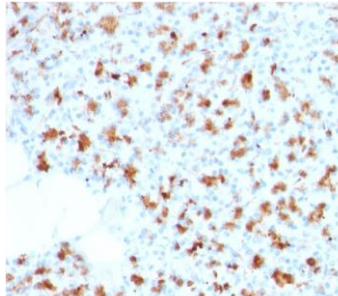
Clone: MD193
Source: Mouse
Isotype: IgG1k
Reactivity: Human
Immunogen: Recombinant fragment of human BARX1 protein aa 155-254
Localization: Nucleus
Formulation: Purified antibody in PBS pH7.4, containing BSA and $\leq 0.09\%$ sodium azide (NaN₃)
Storage: Store at 2°- 8°C
Applications: IHC
Package:

Description	Catalog No.	Size
BARX1 Concentrated	MC0440	1 ml
BARX1 Prediluted	MC0440RTU7	7 ml

IHC Procedure*

Positive Control Tissue: Pancreas, HepG2 cell lysate
Concentrated Dilution: 50-200
Pretreatment: Tris EDTA pH9.0, 15 minutes using Pressure Cooker, or 30-60 minutes using water bath at 95°-99°C
Incubation Time and Temp: 30-60 minutes @ RT
Detection: Refer to the detection system manual

* Result should be confirmed by an established diagnostic procedure.



FFPE human pancreas stained with anti-BARX1 using DAB

References:

1. Metabolism as an early predictor of DPSCs aging. Macrin, D.|Alghadeer, et al. Sci Rep. 9: 2195, 2019.
2. Loss of Barx1 promotes hepatocellular carcinoma metastasis through up-regulating MGAT5 and MMP9 expression and indicates poor prognosis. Guodong Wang, et al. Oncotarget. Sep 22; 8(42): 71867–71880, 2017.