

Intermezzo Violin Audition Requirements

1. Scales, see below
2. 2 Arpeggio Sequences, one in C and one in G
3. A solo piece of your choice, representing your musical and technical skills (2-3 minutes)

Scales – please prepare all scales, as many octaves as you are able

The image displays six musical staves, each representing a different scale for violin. Each staff begins with a treble clef and a key signature. The scales are as follows:

- Staff 1: C major scale, starting on G4 (indicated by a green vertical line).
- Staff 2: D major scale, starting on D4 (labeled '5').
- Staff 3: E major scale, starting on E4 (labeled '9').
- Staff 4: F major scale, starting on F4 (labeled '13').
- Staff 5: G major scale, starting on G4 (labeled '17').
- Staff 6: A major scale, starting on A4 (labeled '25').

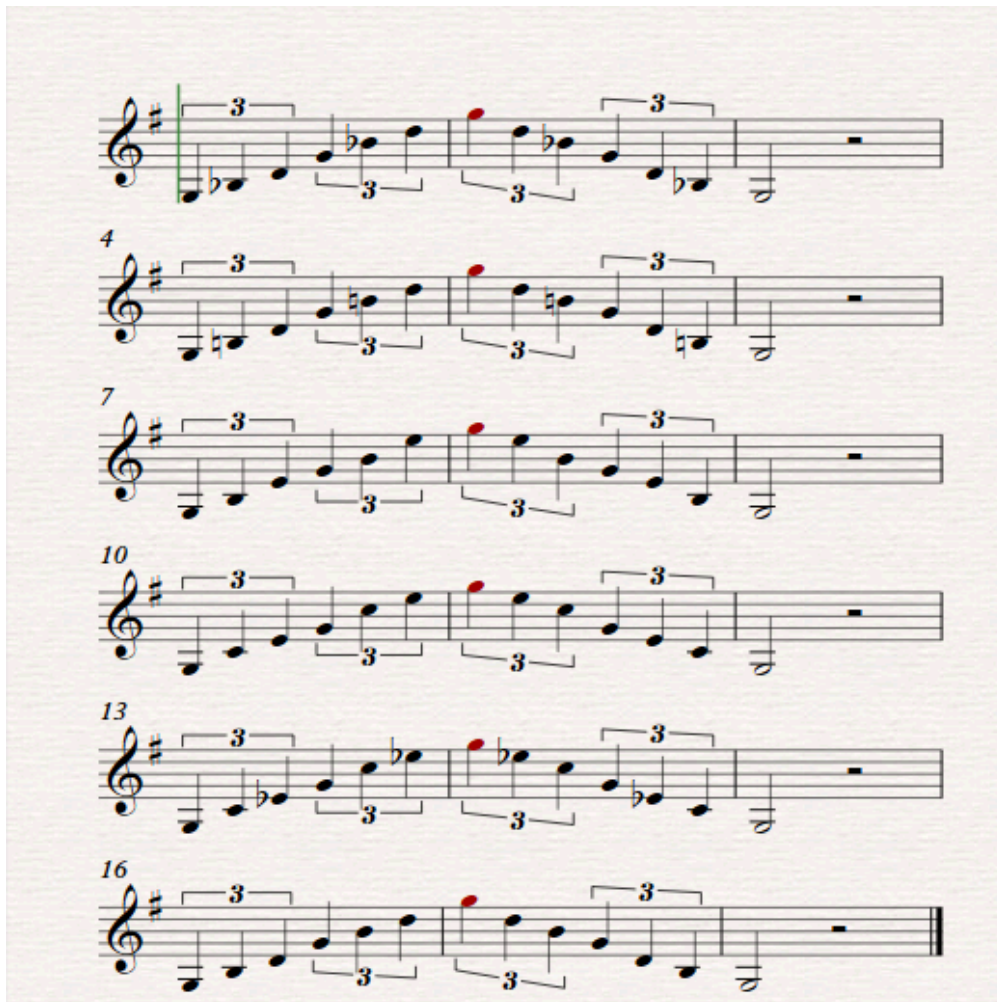
Each scale is written in a single line of music, showing the ascending and descending patterns across four measures. The scales are in 4/4 time.

Arpeggio Sequence – Play what you are able, one octave and two octave versions are below

G Sequence, one octave



G Sequence, two octaves

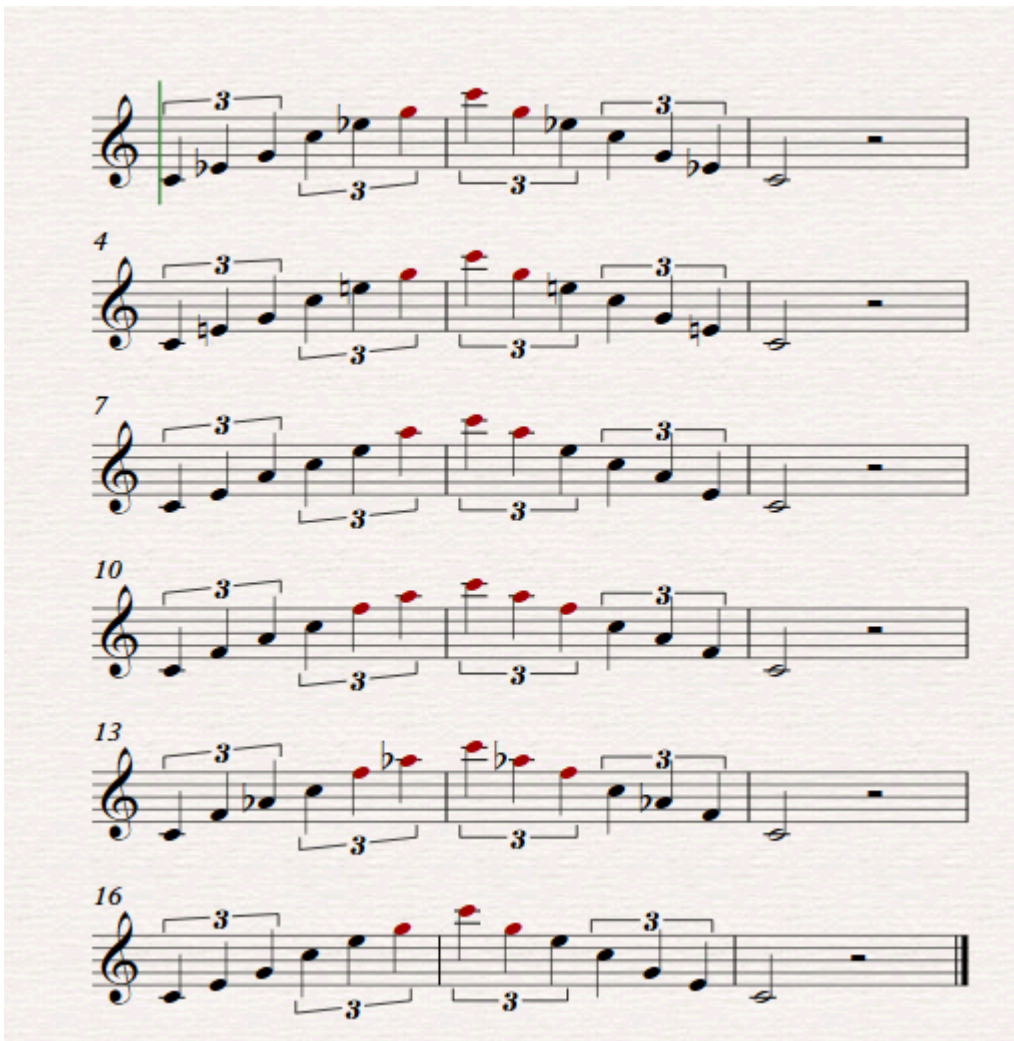


C Sequence, one octave



Musical notation for the C Sequence, one octave, in 4/4 time. The sequence consists of two staves of music. The first staff begins with a treble clef and a 4/4 time signature. The melody is composed of eighth notes, with groups of three notes beamed together and marked with a '3' above them, indicating triplets. The notes are: C4 (quarter), B3 (quarter), A3 (quarter), G3 (quarter), F3 (quarter), E3 (quarter), D3 (quarter), C3 (half). The second staff continues the sequence, starting with a measure rest for the first measure, then repeating the triplet pattern: C4 (quarter), B3 (quarter), A3 (quarter), G3 (quarter), F3 (quarter), E3 (quarter), D3 (quarter), C3 (half). The piece concludes with a double bar line.

C Sequence, two octaves



Musical notation for the C Sequence, two octaves, in 4/4 time. The sequence consists of six staves of music, each starting with a measure rest. The melody is composed of eighth notes, with groups of three notes beamed together and marked with a '3' above them, indicating triplets. The notes are: C4 (quarter), B3 (quarter), A3 (quarter), G3 (quarter), F3 (quarter), E3 (quarter), D3 (quarter), C3 (half). The sequence spans two octaves, with the final note being C5. The piece concludes with a double bar line.