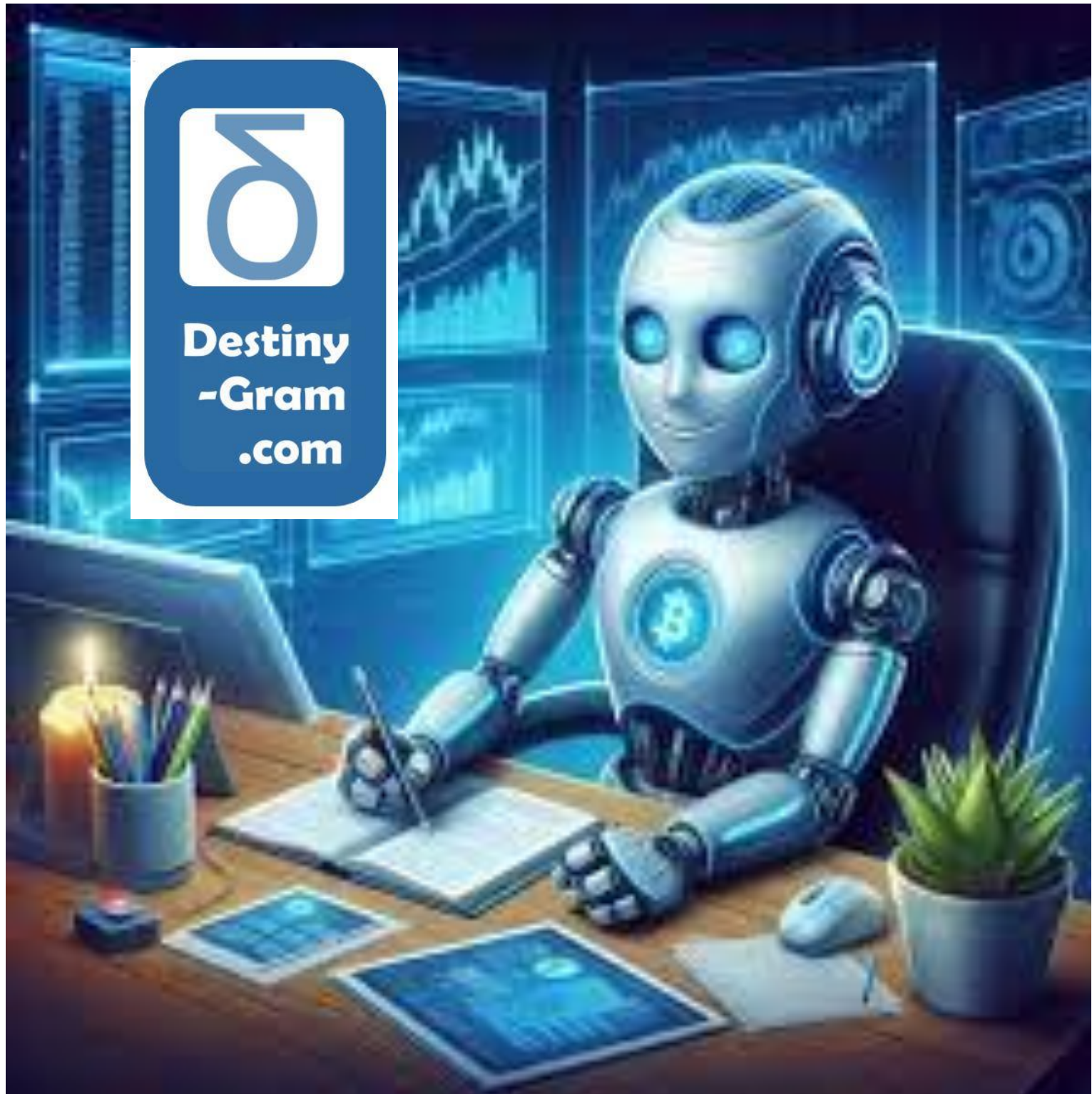




**Destiny
-Gram
.com**



THE FUTURE OF AI-ASSISTED MENTORING AND PERSONAL DEVELOPMENT

“The Future of AI-Assisted Mentoring and Personal Development”

In the rapidly evolving landscape of artificial intelligence and personal development, Destiny-Gram is pioneering the new paradigm: ‘AI-chatbot mentoring based on comprehensive Personal Profiles’. This innovative approach promises to revolutionize how individuals seek guidance, make decisions, and pursue personal and professional growth.

Key Benefits:

1. **Tailored Guidance:** AI mentors analyse user profiles to offer advice precisely calibrated to individual circumstances, personality types, and goals.
2. **Continuous Availability:** Unlike human mentors, AI chatbots are accessible 24/7, providing support whenever needed.
3. **Data-Driven Insights:** By processing vast amounts of data, AI mentors can identify patterns and offer evidence-based recommendations.
4. **Objective Perspective:** AI mentors provide unbiased advice, free from human prejudices or personal agendas.
5. **Multifaceted Support:** From career coaching to personal development, AI mentors can assist across various life domains.

Applications:

Career Development:

- Personalized career path recommendations
- Skill gap analysis and learning suggestions
- Interview preparation and job search strategies

Personal Growth:

- Goal setting and progress tracking
- Emotional intelligence development
- Stress management and work-life balance advice

Business and Entrepreneurship:

- Business plan evaluation
- Market trend analysis
- Networking and partnership recommendations

Relationship Guidance:

- Communication style improvement
- Conflict resolution strategies
- Compatibility assessments for personal and professional relationships

Financial Planning:

- Personalized investment strategies
- Budgeting advice based on individual goals and risk tolerance
- Retirement planning tailored to personal circumstances

Ethical Considerations and Privacy:

1. **Data Security:** Robust encryption and cybersecurity measures essential to protect sensitive personal information.
2. **Transparency:** Clear communication about how AI uses personal data crucial for building trust.
3. **User Control:** Individuals have full control over their data, including the ability to modify or delete their profiles.
4. **Ethical AI Design:** Ensuring AI mentors are designed with strong ethical guidelines to prevent misuse or manipulation.

Future of AI Mentoring:

As AI technology continues to advance even more sophisticated mentoring capabilities are anticipated:

1. **Integration with Wearable Technology:** Real-time physiological data could inform AI mentors about stress

levels, sleep patterns, and overall well-being, allowing for more timely and relevant advice.

2. **Augmented Reality Interfaces:** AI mentors could provide guidance through AR interfaces, offering immersive learning experiences and real-time feedback in various situations.
3. **Predictive Analytics:** Advanced algorithms could forecast potential challenges and opportunities in a user's life, enabling proactive guidance and preparation.
4. **Collaborative AI Networks:** Multiple AI mentors could collaborate, each specializing in different areas, to provide comprehensive support across all aspects of a user's life.

Future of AI-chatbots: How each of the top AI chatbots might evolve to support the Destiny-Gram concept will depend on their Future Potential, API Integration, and Mentoring Capabilities:

1. **GPT-4 (OpenAI)** Future potential: Its strong language model could enable nuanced understanding of users' complex life situations. API integration: Could offer detailed, contextually relevant advice based on comprehensive user profiles. Mentor capabilities: Might excel in analysing patterns in users' lives, offering insights on personal growth and career development.
2. **Claude (Anthropic)** Future potential: Its ethical reasoning could be valuable for sensitive personal and career advice. API integration: Might integrate well with systems requiring careful handling of personal data. Mentor capabilities: Could offer balanced, thoughtful advice on complex life decisions, with strong consideration of long-term consequences.
3. **Gemini (Google)** Future potential: Its multimodal capabilities could allow for analysis of various data types in user profiles. API integration: Might offer seamless integration with other Google services for a holistic view of user data. Mentor capabilities: Could potentially analyse visual data (e.g., body language in video interviews) alongside text, providing comprehensive feedback.

4. **LLaMA 2 (Meta)** Future potential: Being open-source, it could be extensively customized for specific mentoring needs. API integration: Might allow for deep customization of the API to fit Destiny-Gram's unique requirements. Mentor capabilities: Could be fine-tuned on specific datasets relevant to personal development and career coaching.
5. **ChatGPT (OpenAI)** Future potential: Its user-friendly nature could make it accessible to a wide range of users seeking mentorship. API integration: Might offer a balance of sophisticated capabilities and ease of implementation. Mentor capabilities: Could be effective for general advice and as an entry point for users new to AI mentoring

Considering the forward-looking ideas on AI-mentoring mentioned above:

- **Wearable Integration:** GPT-4 or Gemini might be best positioned to interpret complex physiological data and provide holistic advice.
- **AR Interfaces:** Gemini's multimodal capabilities could be advantageous for creating immersive AR mentoring experiences.
- **Predictive Analytics:** GPT-4's advanced reasoning or Claude's ethical considerations could be valuable for making responsible predictions about users' futures.
- **Collaborative AI Networks:** An open-source model like LLaMA 2 might be most flexible for creating a network of specialized mentors.

As AI technology evolves, these models are likely to develop more sophisticated mentoring capabilities, potentially incorporating features like emotional intelligence, long-term memory of user interactions, and adaptive learning to improve mentorship over time.

Future of Social Networking: New social networking models might evolve to incorporate more comprehensive personal profiles like those offered by Destiny-Gram. Indeed, as AI and data analytics advance, there could be a concerted shift towards more focused, personalized networking experiences. Here are some thoughts on how this might unfold as envisaged by Destiny-Gram:

1. **Enhanced Profile Depth:** Most future social networks could allow for much more detailed personal profiles, similar to the Destiny-Gram concept. These profiles might include:
 - Personality assessments
 - Skill inventories
 - Career trajectories
 - Personal goals and aspirations
 - Life experiences and milestones
2. **AI-Driven Networking:** With access to these rich profiles, AI could facilitate more meaningful connections:
 - Job seekers could be matched with potential employers based on a holistic view of their skills, personality, and career goals.
 - Mentorship programs could pair mentors and mentees based on complementary strengths and aspirations.
 - Collaborative projects could form teams with diverse, complementary skill sets.
3. **Focused Interest Groups:** Instead of broad, general networks, the rise of highly specialized communities might arise:
 - Professional development groups aligned with specific career paths
 - Personal growth circles focused on shared life goals
 - Skill-sharing networks for peer-to-peer learning

4. **Dynamic Profile Evolution:** Profiles could become "living documents" that evolve over time:

- AI could track a user's progress towards stated goals and suggest profile updates (viz. Destiny-Gram's Progress Tracking System PTS).
- Achievements and skill developments could be automatically reflected in the profile.
- The network could suggest new connections or opportunities based on profile changes.

5. **Privacy-Centric Design:** With more sensitive information being shared, these networks would need robust privacy controls:

- Granular sharing settings for different aspects of the profile
- Blockchain or other decentralized technologies to give users control over their data
- AI-powered privacy assistants to help users manage their online presence

6. **Integration with Personal AI Assistants:** Personal AI mentors (viz. Destiny-Gram model) could interface with these networks:

- AI mentors could suggest profile updates based on personal conversations and progress
- They could recommend networking opportunities aligned with the user's goals
- The AI could help prepare users for networking events or interviews based on shared profile information

7. **Augmented Reality (AR) Networking: As AR technology advances, networking could become more immersive:**

- AR overlays at professional events could display relevant profile information when meeting someone
- Virtual networking spaces could allow for rich, distance-free interactions based on shared interests or goals

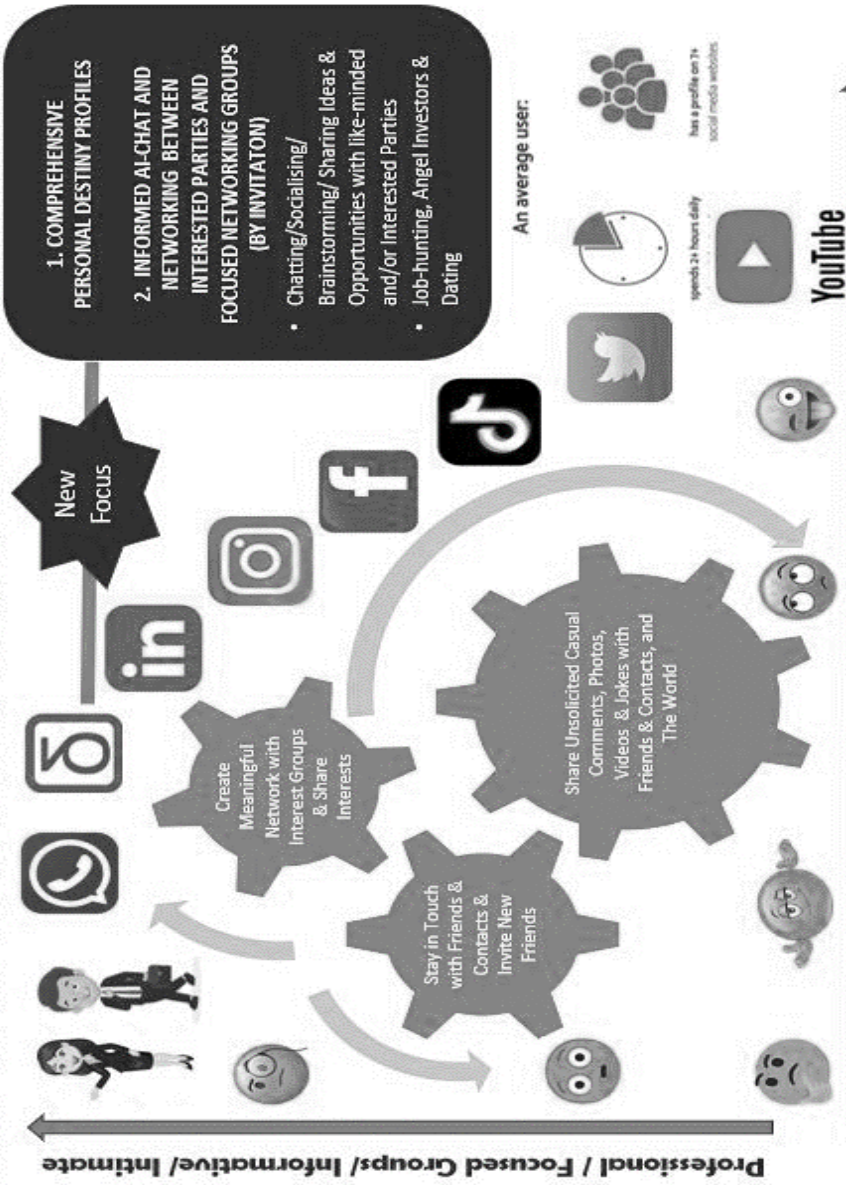
8. Predictive Career Pathing: By analysing vast amounts of profile data, these networks could offer insights into potential career paths:

- Suggesting skills to develop based on career aspirations
- Identifying emerging job markets aligned with a user's profile
- Recommending educational opportunities to bridge skill gaps

This evolution would represent a shift from the current model of broad, often superficial connections to a paradigm of deeper, more purposeful networking. This vision aligns well with the long-term plans for Destiny-Gram, where detailed personal profiles form the foundation for meaningful AI-human interactions and personal growth, enabling more focused networking.

Future Social Networking Concept

A NEW SOCIAL NETWORKING MODEL



THE SOLUTION

UNIQUE SELLING POINT - "FOCUS ON YOU"

"Your Unique Personal Profile will help AI focus on you as an individual with informed AI-Chat and Advice and by showcasing your Personality & Passions Destiny-Gram will help you develop a Personal Network relevant to & interested in you."



Yes, there is demand for a network based on users creating a comprehensive profile of themselves including personality, values, skills, passions, interest, ideas, etc - all which could be searchable in the network for personal development. Such a network could help users connect with like-minded individuals and find opportunities to learn and grow.

"Unravelling the Unique Essence of the Individual."

THE CURRENT NEGATIVE TREND IN SOCIAL MEDIA IS FROM 'FOCUSED INFORMATION & INTIMATE INTEREST GROUPS' TO 'GENERAL GLOBAL SOCIAL MEDIA & ENTERTAINMENT'

Social / Un-focused Groups/ Entertainment/ Distant

1. COMPREHENSIVE PERSONAL DESTINY PROFILES
 2. INFORMED AI-CHAT AND NETWORKING BETWEEN INTERESTED PARTIES AND FOCUSED NETWORKING GROUPS (BY INVITATION)
- Chatting/Socialising/ Brainstorming/ Sharing Ideas & Opportunities with like-minded and/or Interested Parties
 - Job-hunting, Angel Investors & Dating

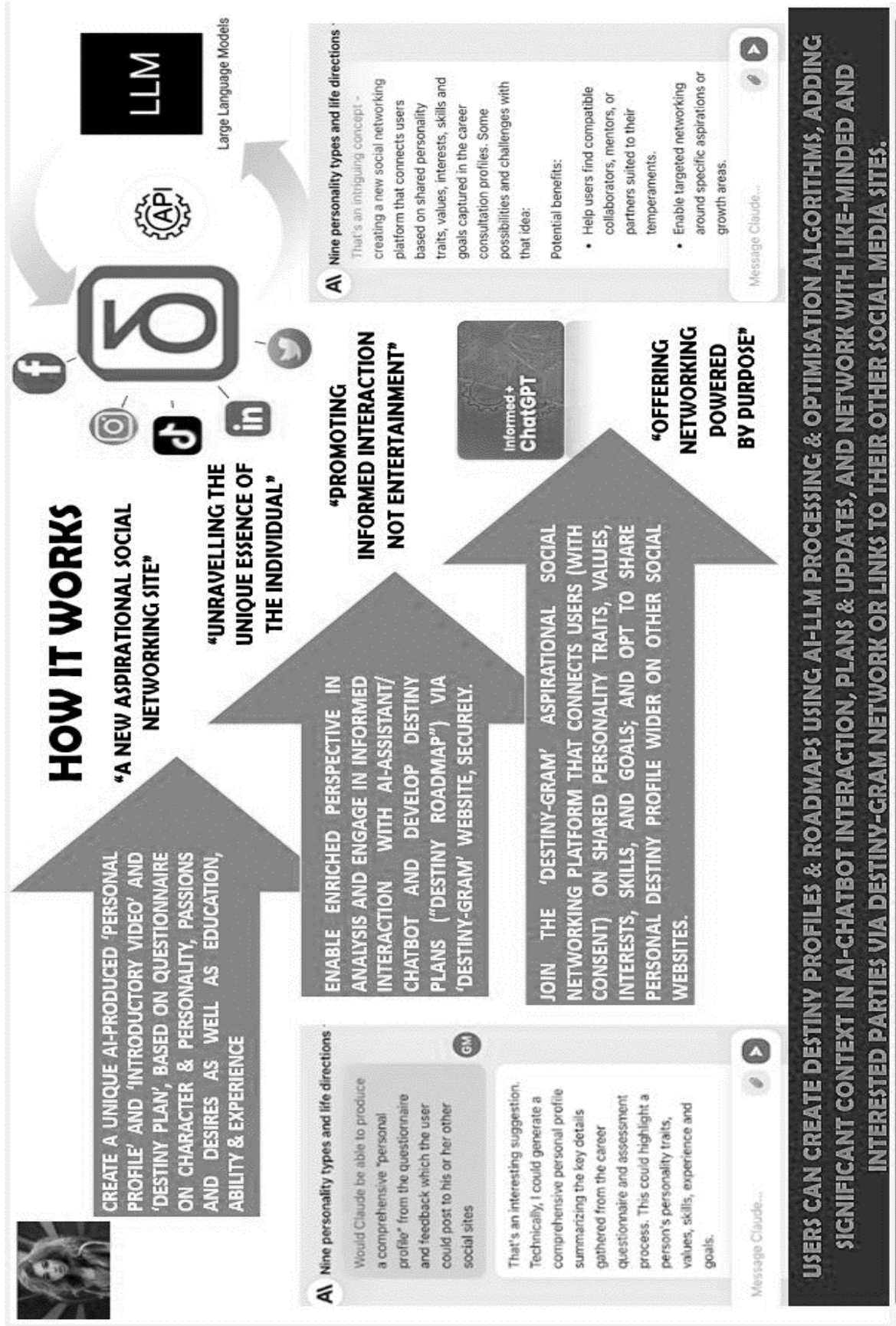
An average user:

- spends 2+ hours daily
- has a profile on 7+ social media websites

YouTube

"Networking Powered by Purpose."

How it Works



Destiny-Gram Future Development: Destiny-Gram's development will be structured, starting with its focused core offering of AI-assisted Personal Profiling and AI-chatbot Mentoring. Expansion into more ambitious territory, as a social media/networking offering itself, will be measured and depend on partnerships developed.

Destiny-Gram's Progress Tracking System (PTS) is offered as its mid-term Premium Service with enhanced, dynamic features. This system allows users to:

1. Continuously track their progress across all ten secrets to self-actualization
2. Set and monitor personal goals aligned with these secrets
3. Receive ongoing, personalized AI-assessed insights and recommendations
4. Access advanced resources and one-on-one AI coaching sessions

By upgrading to the PTS, users can turn the wisdom of the secrets developed in Destiny-Gram's sister book "Your Impossible Mission" into concrete, actionable plans for personal transformation. It will be akin to having a life-long personal coach and accountability partner, helping the user to stay committed to his/her path to self-actualization.

The favoured partner for this mid-term development (AI chatbot integration and Progress Tracking System) was Anthropic (Claude) due to its strong ethical focus, which aligns well with handling sensitive personal data, and its flexibility in API customization.

The long-term vision (Social network integration) will depend on Destiny-Gram's developed partnerships in the future. For such an ambitious ecosystem integration, a blue-chip partner with a natural fit in the professional Social Media/AI space such as Microsoft (LinkedIn). Their professional focus aligns well with

Destiny-Gram's goals, and they have the technical capabilities to support the ambitious vision with a user base of over 800 million.

While a blue-chip partner could accelerate Destiny-Gram's long-term vision, its current focus is on building its strong, differentiated and unique approach to personal development via personal profiling and AI-mentoring.

The Destiny-Gram system is designed with robust APIs from the start, making future integrations easier, whether with AI chatbots or social networks.

Conclusion: AI-powered mentoring based on comprehensive personal profiles represents a significant leap forward in personalized guidance and support. While challenges remain, particularly in the realms of privacy and ethics, the potential benefits are immense. As this technology matures, it has the power to democratize access to high-quality mentoring, enabling individuals from all walks of life to receive personalized guidance for personal and professional development. The future of mentoring is digital, personalized, and powered by AI, promising a new era of individual growth and empowerment.

Thereafter, at the user's discretion, personal profiles may be shared (in part or whole) wider than with just the AI-mentor (in social media) APIs as outlined above.

AI- Caveats and Security Issues: While the use of AI as a powerful tool in personal development is an exciting concept, no system is perfect. It is important to maintain a critical and nuanced view of AI capabilities and limitations in use of AI in decision-making and personal advice. Both the strengths and limitations of AI and human cognition need to be recognised in the process. To achieve this, there is a need to strive for:

1. Sufficient transparency from the AI about its limitations in its feedback.
 2. A balanced approach that combines AI's data-processing capabilities with human emotional intelligence and intuition, specific to each case.
 3. Recognition that in some areas, particularly those involving deep human emotions or complex ethical considerations, human judgment should take precedence.
 4. Continuous refinement of AI systems to better understand and account for human emotional factors, while still maintaining clear boundaries about what AI can and cannot do.
-

AI-Mentoring Caveat

AI is a powerful tool, but it doesn't replace human connection, emotional intelligence or lived experience. Warren Buffet once said, "AI can change everything in the world except how men think and behave". But at Destiny-Gram, we believe AI can be a powerful tool to help you understand your own thoughts and behaviours better. It can offer not just personalized guidance but empathetic support during challenging times.

- *Destiny-Gram* (YouTube)

Destiny-Gram recommends that users take independent human advice in parallel from friends or counsellors, in their decision making. Its website provides links to mental health resources to help with the evolving nature of personal growth because it recognises that AI is not the panacea to mental health and happiness.

The website also includes instructions in the interface with AI-chatbots for it to highlight to the user, the importance of human factors, in specific responses:

AI-Chatbot Instruction

“The personal profile contains detailed information about the user's background, preferences, personality traits, and life experiences. While providing advice based on this profile, you are instructed to identify specific instances where human judgment is particularly crucial. In your responses, include a ‘Human Factor Alert’ when addressing topics that significantly involve:

- *Emotional decisions*
- *Ethical dilemmas*
- *Creative endeavours*
- *Intuition-based choices*
- *Cultural or social nuances*
- *Personal values and beliefs*
- *Risk assessment in high-stakes situations*
- *Interpretation of complex human interactions*

When flagging these areas, briefly explain why human insight is especially valuable in this context. Encourage the user to seek input from trusted human sources (friends, family, professional advisors) for these specific aspects of their decision-making process. This alert should be used judiciously to maintain its impact and relevance, not for every response. The goal is to enhance the symbiotic relationship between AI analysis and human judgment, providing users with a comprehensive decision-making framework.”

- **Destiny-Gram**

This instruction aims to strike a balance between leveraging the AI's analytical capabilities and recognizing the irreplaceable value of human insight in certain critical areas. It should help users navigate the complex interplay between data-driven advice and human-centric decision-making.

Star Trek

The relationship between Captain Kirk and Doctor Spock in 'Star Trek' reflects a dynamic balance between emotion and logic. Kirk, the emotional human, relies on instinct, empathy, and intuition, often leading with his heart. Spock, the logical Vulcan, approaches situations with a calm, rational mind, valuing reason over feelings. Together, they complement each other, with Kirk's passion tempered by Spock's logic, and Spock's reason enriched by Kirk's humanity. Drawing a parallel, when humans use AI chatbots for personal mentoring, a similar dynamic unfolds. The human user, like Captain Kirk, brings emotional needs, personal experiences, and subjective perspectives. The AI, akin to Dr. Spock, provides objective, data-driven insights, offering rational advice without emotional bias.

AI has broader access to and probably 'outsmarts' Dr Spock in terms of NLP and algorithmic analysis of big data! These relationships thrive when the human's emotional intelligence and the AI's logical analysis work together, creating a balanced, effective mentoring experience that combines the best of both worlds

- Destiny-Gram

Getting the balance between human input and machine intelligence right is a very important part of the Destiny-Gram service and will lead to enhanced AI-chatbot advice and help maximise its effectiveness. For example, with the level of personal information shared, AI may consider some issues are more likely to be affected by human inputs for certain individuals than others. This is how the AI-interface is massaged to be hyper-personalized to the benefit of all users.

Destiny-Gram's comprehensive interface with its AI-tools, highlights the limitations in decision-making which include AI's:

1. Lack of emotional intelligence and intuition
2. Potential for bias in training data
3. Inability to fully grasp complex human experiences
4. Limitations in understanding cultural nuances
5. Challenges with ethical reasoning in ambiguous situations

Destiny-Gram's approach of integrating personalized profiles with AI interactions is innovative. The idea of flagging specific areas where human judgment is crucial, based on individual profiles, enhances the effectiveness of the AI advice.

In summary, the system potentially offers a more nuanced, personalized experience by:

1. Leveraging AI's data processing capabilities
2. Incorporating detailed personal context
3. Highlighting areas where human insight is particularly valuable
4. Encouraging a balance between AI analysis and human judgment

The concept of hyper-personalized guidance, tailored to individual profiles and sensitive to the need for human input in certain areas, represents a significant step forward in creating more effective AI-human collaborative decision-making tools.

Security Issues: Amid the euphoria of sharing information and getting personalised feed-back from AI-chatbots, It is important to emphasize ongoing ethical considerations, privacy protections, and the need for transparency about the system's capabilities and limitations. Users should always be aware they're interacting with a third-party AI system, even one with advanced personalization features.

The security and privacy of user data at AI companies is a critical and complex issue. While many companies have robust security measures in place, there are several factors to consider:

1. **Current Security Measures:** Reputable AI companies typically employ state-of-the-art encryption, access controls, and data protection protocols. Many adhere to international security standards like ISO 27001.
2. **Regulatory Compliance:** Companies operating in regions with strict data protection laws (like GDPR in Europe or CCPA in California) are legally obligated to maintain high standards of data protection.
3. **No Perfect Security:** Despite best efforts, no system is 100% secure. Data breaches can and do occur even in well-protected systems.
4. **Third-Party Sharing:** While ethical companies commit to not sharing personal data with third parties without consent, it's crucial to read and understand their privacy policies carefully.
5. **Data Retention Policies:** Users should be aware of how long their data is stored and for what purposes.
6. **Evolving Threats:** The cybersecurity landscape is constantly changing, requiring continuous updates to security measures.
7. **Transparency:** Ethical companies should be clear about their data handling practices and any potential risks.
8. **User Control:** Ideally, users should have control over their data, including the ability to delete it.

While most reputable companies are making significant efforts to protect user data, it's understandable for users to have concerns. The decision to share personal data with AI-chatbots (not specifically recommended by Destiny-Gram) should be made

carefully, considering the specific company's reputation, security practices, and transparency.

Crucially, the Destiny-Gram project itself:

- Implements robust security measures
- Is transparent about data handling practices
- Provides users with full control over their data
- Regularly audits and updates security protocols

In the long-term as Destiny-Gram develops into an ecosystem integrating with social networking further robust protection measures will be crucial. Here's how Destiny-Gram might approach this in the future as it develops:

1. Granular Consent Model

Users could have fine-grained control over their data:

- Different levels of profile visibility (e.g. public, semi-private, private)
- Ability to compartmentalize data (e.g. career info separate from personal goals)
- Consent-based access for specific individuals or groups

2. Blockchain-Based Data Management

Blockchain technology could enhance security and user control:

- Decentralized storage to prevent single points of failure
- Smart contracts to enforce user-defined access rules
- Immutable audit trails of data access

3. Zero-Knowledge Proofs

This cryptographic method could allow limited information sharing:

- Users could prove they meet certain criteria without revealing specific data
- E.g., proving you have a certain skill level without showing your entire work history

4. AI-Powered Privacy Assistant

An AI could help users manage their privacy:

- Suggesting optimal privacy settings based on user preferences
- Alerting users to potential privacy risks in their sharing patterns
- Providing plain-language explanations of complex privacy policies

5. Tokenized Access

Access to detailed profiles could be managed through digital tokens:

- Users issue time-limited tokens for profile access
- Tokens could be revoked at any time
- Different tokens could grant access to different parts of the profile

6. Federated Identity Systems

Users could maintain control of their identity across multiple platforms:

- Single, user-controlled identity used across various services
- Ability to selectively share different aspects of identity with different services

7. Encrypted Data Vaults

Sensitive information could be stored in encrypted personal data vaults:

- Users hold the encryption keys
- Data is only decrypted when explicitly shared

8. Differential Privacy

When aggregating data for analysis, differential privacy techniques could be used:

- Allows for useful insights without compromising individual privacy
- Adds calculated noise to datasets to prevent individual identification

9. Regular Security Audits and Penetration Testing

To maintain trust, the platform would need to commit to ongoing security verification:

- Regular third-party security audits
- Bug bounty programs to incentivize finding and reporting vulnerabilities

10. User Education and Transparency

Clear communication about data use and security measures:

- In-app tutorials on privacy features
- Clear, plain-language privacy policies
- Transparency reports on data requests and security incidents

By implementing these kinds of robust measures, Destiny-Gram could provide users with powerful tools to control their data, allowing them to share their rich, detailed profiles more broadly with trusted parties and social networks while maintaining strong protections against unauthorized access or misuse. This balance of openness and security would be key to building user trust in such a comprehensive personal development and networking platform for the future

“Destiny-Gram’s Unique Value Proposition”

Destiny-Gram is an innovative AI-driven personal development platform conceived by co-author Greg Malpass. The platform integrates proprietary profiling methods with advanced AI technology to offer users comprehensive self-assessment and personalized guidance.

Key features include:

- 1. Detailed personality and character profiling using Multiple-Choice Questionnaires (MCQ) and Points of View (POV) prompts**
- 2. AI-powered analysis of user responses to generate in-depth personal insights**
- 3. Ongoing AI chatbot mentoring tailored to individual profiles**
- 4. A Progress Tracking System (PTS) for continuous personal development linked to the 10 secrets in the Destiny-Gram sister book “Your Impossible Mission”**

The platform aims to help users discover their true potential, make informed life decisions, and navigate career paths in an AI-driven future. It emphasizes privacy and data security, giving users full control over their information.

Destiny-Gram's long-term vision includes integration with advanced technologies like wearables and augmented reality, as well as potential collaboration with major tech companies to create more personalized and meaningful social networking experiences.

The concept is positioned as a revolutionary tool for self-discovery and life planning, combining cutting-edge AI technology with the timeless quest for personal growth and purposeful living.

Use of the Enneagram: The Enneagram plays a crucial role in Destiny-Gram's personality assessment component, serving as a foundational tool for understanding human behaviour and motivations. Here's a summary of its relevance to the Destiny-Gram model:

1. **Comprehensive profiling:** The Enneagram provides a nuanced framework for analysing individual personalities, helping create a holistic picture of each user's traits, motivations, and behavioural patterns.
2. **Enhanced self-awareness:** By incorporating the Enneagram, Destiny-Gram helps users recognize their inherent strengths and areas for growth, fostering deeper self-understanding.
3. **Tailored development strategies:** Understanding how different personality types approach challenges allows for more personalized development recommendations.
4. **AI-powered insights:** The Enneagram enhances the AI's ability to generate accurate, personalized recommendations by considering the subtleties of each personality type.
5. **Career and life alignment:** The system aids in identifying potential career paths, relationship dynamics, and life goals that align with core personality traits.
6. **Motivation prioritization:** Each Enneagram type has specific focuses of importance, helping users understand their primary motivations and desires.

By integrating the Enneagram into its AI-driven analysis, Destiny-Gram creates a synergy that elevates the entire profiling process, bringing users closer to uncovering their true potential and destiny.

AI-Caveats and Security Issues: The caveats and security issues associated with Destiny-Gram AI-driven personal development platforms are noted as:

1. **AI Limitations:** AI, while powerful, has limitations in areas requiring emotional intelligence, complex ethical reasoning, and understanding of human nuances.
2. **Human Factor Alert:** Destiny-Gram implements a "Human Factor Alert" system in its AI chatbot, flagging areas where human judgment is particularly crucial, such as emotional decisions or ethical dilemmas.
3. **Balanced Approach:** The platform emphasizes the importance of combining AI capabilities with human insight, encouraging users to seek human advice alongside AI recommendations.
4. **Security Measures:** The text outlines current and potential future security measures, including encryption, blockchain-based data management, zero-knowledge proofs, and AI-powered privacy assistants.
5. **User Control:** Destiny-Gram prioritizes user control over personal data, implementing granular consent models and transparent data handling practices, and ability to delete profiles.
6. **Ethical Considerations:** Destiny-Gram recognises the importance of transparency about AI capabilities and limitations, as well as adherence to data protection regulations.

Overall, Destiny-Gram balances the benefits of AI-driven personal development with the necessary safeguards and recognition of human factors in decision-making.