

www.denverofficespace.com

2696 S. Colorado Blvd. #320
Denver, CO 80222
(303) 765-4344 O

University Hills- Annex Building 4201 E. Yale Avenue, Denver, CO 80222



Building Highlights

Building Size: 26,423 SF

Levels: Three (3)

Elevators: One (1)

Parking: 3 : 1,000 SF

YOC/Renovated: 1983/2008/2015

Space Available: 3,529 RSF

Sublease Rates: \$24.00-\$25.00/SF Full Service

***We added two rooms with exercise equipment and full time physical trainers!!**

Location Features

- 1 minute drive to I-25
- Walking distance to food, shopping, banking, grocery, 24 Hour Fitness
- Owner and management on site
- Close to Cherry Creek
- Free common conference room/ training room, break area and patio
- On-site storage
- On-site banking
- Light Rail at I-25 and Yale

John Fairbairn

john@denverofficespace.com
(303) 226-4764

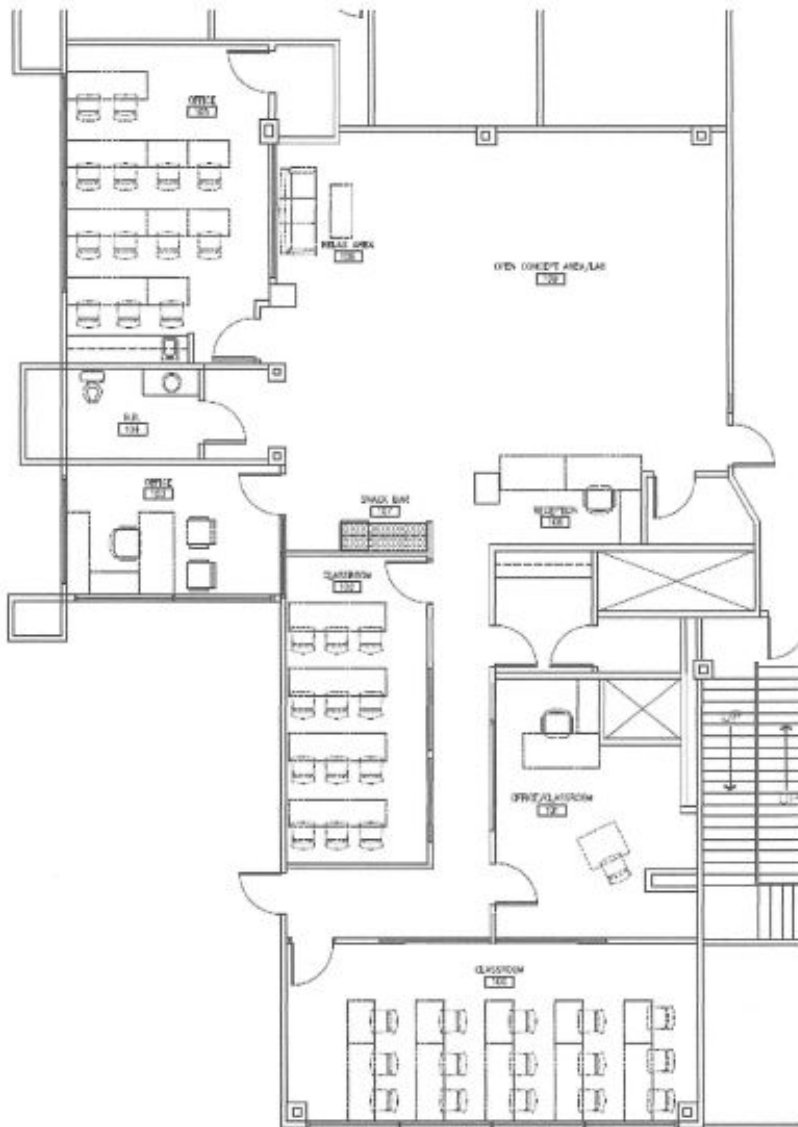


www.denverofficespace.com

2696 S. Colorado Blvd. #320
Denver, CO 80222
(303) 765-4344 O

OFFICE & RETAIL SPACE FOR LEASE

Suite 130-3,529 SF

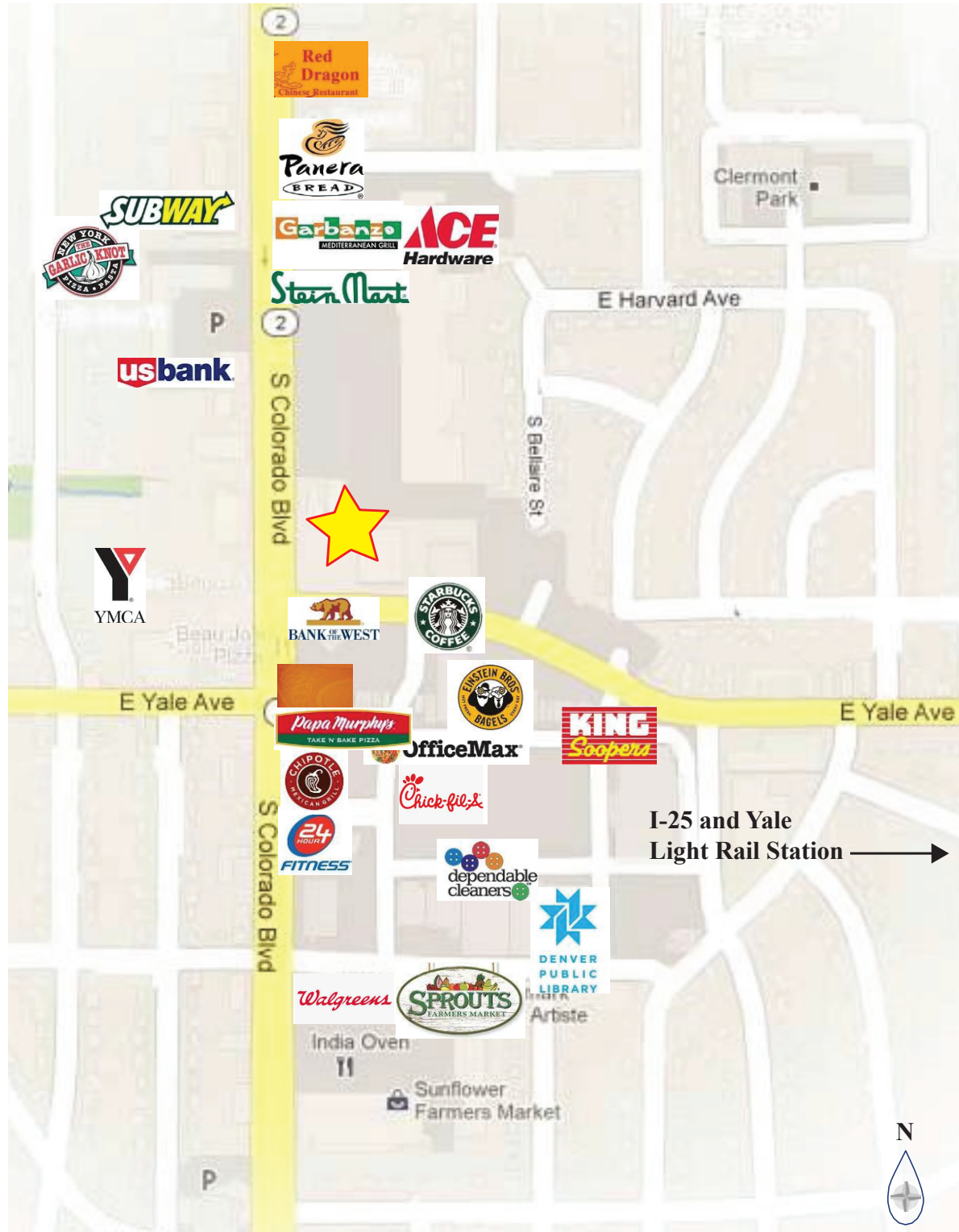


John Fairbairn
john@denverofficespace.com
(303) 226-4764

The information above has been obtained by sources believed to be reliable. While we do not doubt its accuracy, we have not verified it and make no guarantee, warranty, or representation about it. It is your responsibility to individually confirm its accuracy and completeness. Any projections, opinions, assumptions, or estimates used for example only and do not represent the current or future performance of the property. The value of the transaction to you depends on tax and other factors, which shall be evaluated by your tax, financial, and legal advisors. You and your advisors should conduct a careful, independent investigation of the property to determine your satisfaction and the suitability of the property for your needs.

Building Features

2696 S. Colorado Blvd, Denver, CO 80222 | 4201 E. Yale Avenue, Denver, CO 80222



John Fairbairn
john@denverofficespace.com
(303) 226-4764