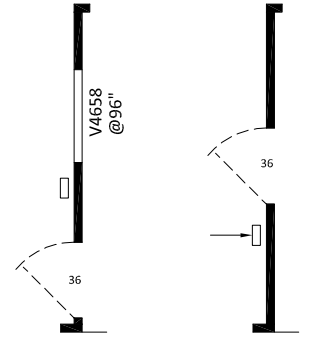


ROOM DIMENSIONS MAY CHANGE PER CONSTRUCTION PRINTS.

SHIP AS 16 WIDE

ALL WINDOW HEIGHTS @82" UNLESS NOTED OTHERWISE

BOX SIZE INCLUDES 2X6 EXTERIOR WALLS



K517H 3BD - 2BA 5928 (1470 SQ. FT. LIVING)
(1542 SQ. FT. TOTAL)

SCALE: 1/8" = 1'-0"

CUSTOMER: ----



DIVISION 31, P.O. BOX 670
SAN JACINTO, CA 92581
(951) 654-9321

| | |
|-----------|--|
| REVISIONS | |
| | |

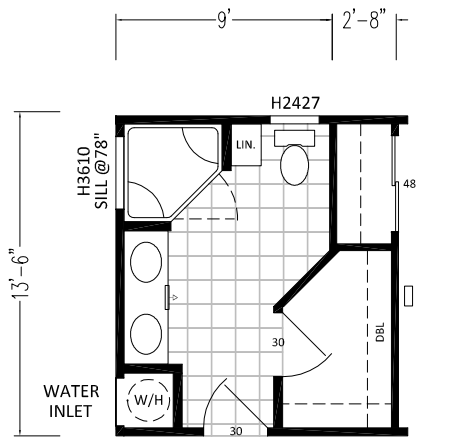
| | |
|----------------|--|
| REVISION DATE: | |
| REVISION BY: | |

| | |
|------------|---------|
| DRAW DATE: | 7-11-17 |
| DRAWN BY: | DCS |

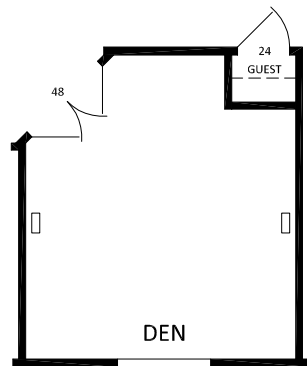
| | |
|----------------|----------------------------------|
| DRAWING TITLE: | SALES FLOOR PLAN 5928-3BD-2BA |
|----------------|----------------------------------|

| | |
|-----------|-------|
| MODEL NO. | K517H |
|-----------|-------|

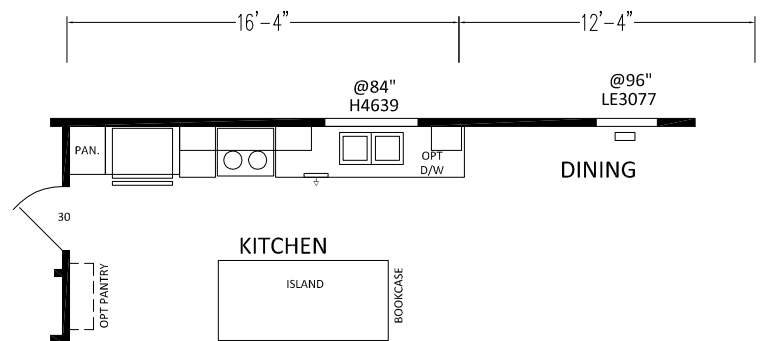
| | | | |
|------------|---|-----------|--------|
| MODEL REV. | E | SHEET NO. | AL-101 |
| DAPIA REV. | 4 | REF NO. | --- |



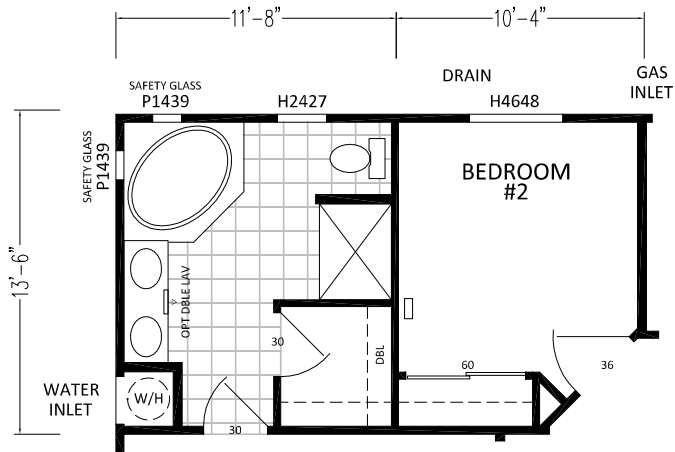
OPTION CORNER SHOWER BATH



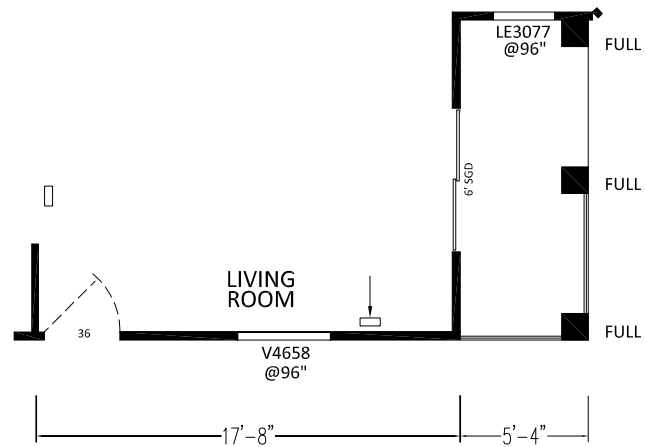
OPTION DEN



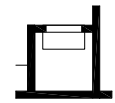
ALT KITCHEN



OPTION CORNER TUB BATH



OPT ENTRY/S.G.D.



OPT LN/RET AIR

SCALE: 1/8" = 1'-0"

CUSTOMER: ----



DIVISION 31, P.O. BOX 670
SAN JACINTO, CA 92581
(951) 654-9321

REVISIONS

REVISION DATE:

DRAW DATE: 7-11-17

DRAWING TITLE:

MODEL NO.

MODEL REV. E

SHEET NO. AL-102

REVISION BY:

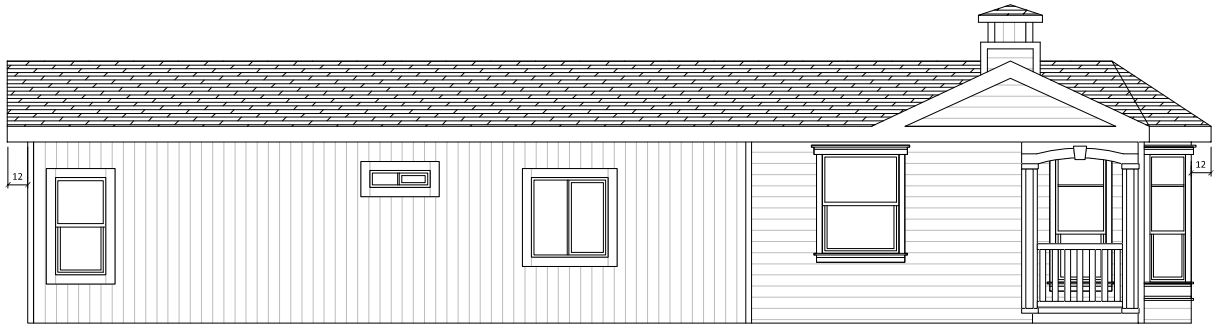
DRAWN BY: DCS

SALES FLOOR PLAN OPTIONS
5928-3BD-28A

K517H

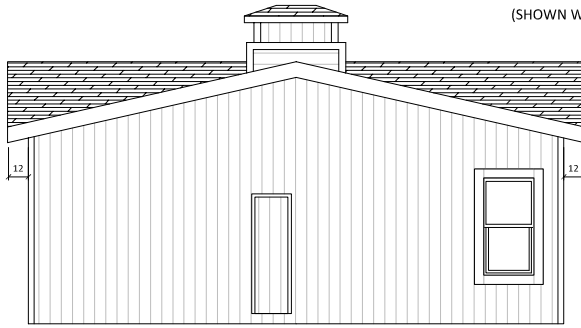
DAPIA REV. 4

REF NO. --



LEFT

(SHOWN WITH OPTIONAL CUPOLA)



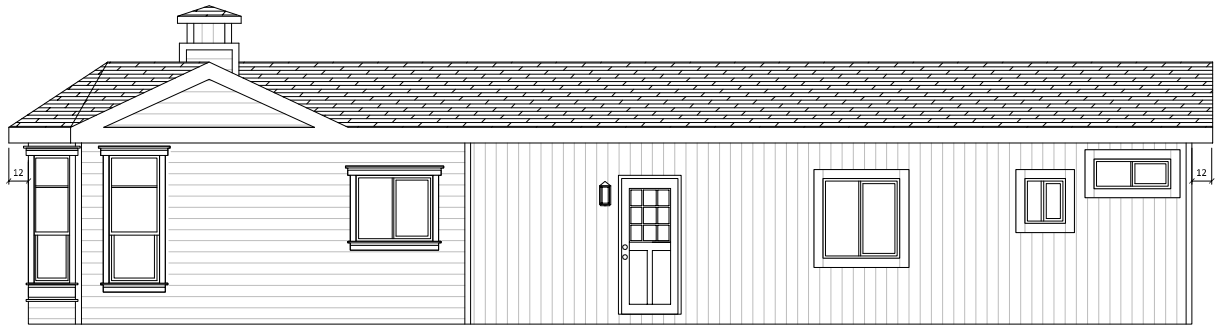
REAR

(SHOWN WITH OPTIONAL CUPOLA)



FRONT

(SHOWN WITH OPTIONAL CUPOLA)



RIGHT

(SHOWN WITH OPTIONAL CUPOLA)

CUSTOMER: ----



DIVISION 31, P.O. BOX 670
 SAN JACINTO, CA 92581
 (951) 654-9321

| | |
|-----------|--|
| REVISIONS | |
| | |

| | |
|----------------|--|
| REVISION DATE: | |
| REVISION BY: | |

| | |
|------------|---------|
| DRAW DATE: | 7-11-17 |
| DRAWN BY: | DCS |

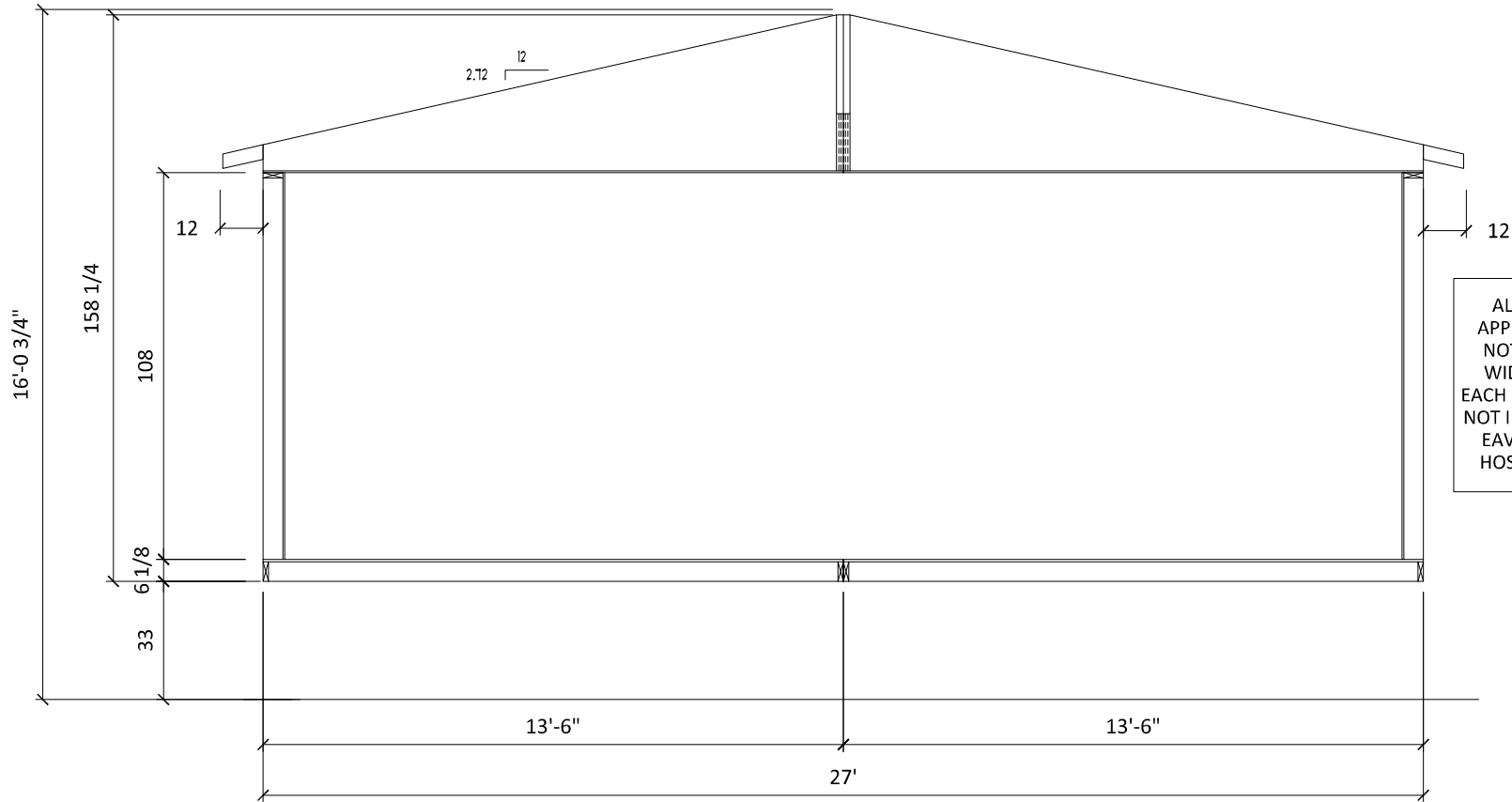
| | |
|----------------|---------------------|
| DRAWING TITLE: | EXTERIOR ELEVATIONS |
| | 5928-38D-28A |

| | |
|-----------|-------|
| MODEL NO. | K517H |
|-----------|-------|

| | | | |
|------------|---|-----------|--------|
| MODEL REV. | E | SHEET NO. | AE-101 |
| DAPIA REV. | 4 | REF NO. | --- |

F-49-V TRUSS

F-49-V TRUSS



ALL DIMENSIONS ARE APPROXIMATE AND MAY NOT REFLECT THE TRUE WIDTH AND HEIGHT OF EACH UNIT. DIMENSIONS DO NOT INCLUDE SIDING, TRIM, EAVES, ROOF DRIP RAIL, HOSE BIBBS, FLUES, ETC.

UNIT DIMENSIONS ARE NOT TO BE USED AS SHIPPING DIMENSIONS.

CUSTOMER: ----



DIVISION 31, P.O. BOX 670
SAN JACINTO, CA 92581
(951) 654-9321

| | |
|-----------|--|
| REVISIONS | |
| | |

| | |
|----------------|--|
| REVISION DATE: | |
| REVISION BY: | |

| | |
|------------|---------|
| DRAW DATE: | 7-11-17 |
| DRAWN BY: | DCS |

| | |
|----------------|---------------|
| DRAWING TITLE: | CROSS SECTION |
| | 5928-3BD-28A |

| | |
|-----------|-------|
| MODEL NO. | K517H |
|-----------|-------|

| | | | |
|------------|---|-----------|--------|
| MODEL REV. | E | SHEET NO. | AS-101 |
| DAPIA REV. | 4 | REF NO. | -- |