

Mouse Anti-Neurofilament [2F11]: MC0348, MC0348RTU7

Intended Use: For Research Use Only

Description: Neurofilaments (NF) are members of the intermediate filament protein family. These neuron-specific filaments are the major constituents of the axonal cytoskeleton. NFs are composed of three major proteins: NF-H is the heavy molecular weight protein (200 kDa), NF-M the medium (160 kDa) and NF-L the light protein (68kDa). The NF-L and NF-M mRNAs are detected early in the embryonal brain, with a progressive increase in their levels during development, while the NF-H mRNA is barely detectable at embryonal stages but accumulates later in the postnatal brain. This antibody labels neurons of the central and peripheral nervous system, and is a useful for the identification of tumors with neuronal differentiation.

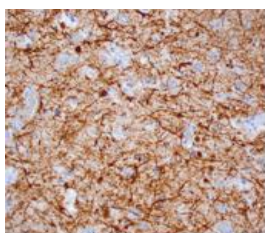
Specifications:

Clone: 2F11
Source: Mouse
Isotype: IgG1k
Reactivity: Human
Localization: Cytoplasm
Formulation: Purified antibody in PBS pH7.4, containing < 0.2% BSA and <= 0.09% sodium azide (NaN3)
Storage: Store at 2°- 8°C
Applications: IHC, WB
Package:

Description	Catalog No.	Size
Neurofilament Concentrated	MC0348	1 ml
Neurofilament Prediluted	MC0348RTU7	7 ml

IHC Procedure*:

Positive Control Tissue: Human brain, paraganglioma
Concentrated Dilution: 25-200
Pretreatment: Citrate pH6.0, 15 minutes using Pressure Cooker, or 30-60 minutes using water bath at 95°-99°C
Incubation Time and Temp: 30-60 minutes @ RT
Detection: Refer to the detection system manual
* Result should be confirmed by an established diagnostic procedure.



FFPE human cerebellum stained with anti-Neurofilament using DAB

References:

1. Developmentally regulated markers in the postnatal cervical spinal cord of the opossum *Monodelphis domestica*. Breckenridge LJ, et al. *Brain Res Dev Brain Res* 103:47-57, 1997.
2. Cytokeratin and neurofilament in lung carcinomas. van Muijen GN et al. *Am J Pathol* 116:363-9, 1984.