



Midland Burn  
Operational Delivery Network 

West Midlands Paediatric Critical Care Network

# Midlands Networks Mass Casualty Event Programme

Friday 13<sup>th</sup> October 2017

Birmingham City Football Club, St. Andrew's Stadium,  
Birmingham, B9 4RL

**ALISTAIR RENNIE**  
**CONSULTANT IN EMERGENCY MEDICINE**  
**MANCHESTER UNIVERSITY NHS FOUNDATION TRUST**



Manchester University  
NHS Foundation Trust

# A QUIET PLEA

**FOR THE NEXT 30 MINUTES OR SO:**

**Please don't tweet  
No photos please  
Keep it in the room**

**Be aware, some of this may be  
upsetting**



# **CONFLICT OF INTERESTS**

**Consultant in Emergency Medicine (MRI, RMCH)**

**Lead for Adult Major Trauma (MRI ED)**

**Trust Lead for EPPR (MFT)**

**MERIT Doctor (NWAS)**

**BASICS (Basics NW)**

**Pre-Hospital Care (NWAA)**

# GLOBAL REPUTATION

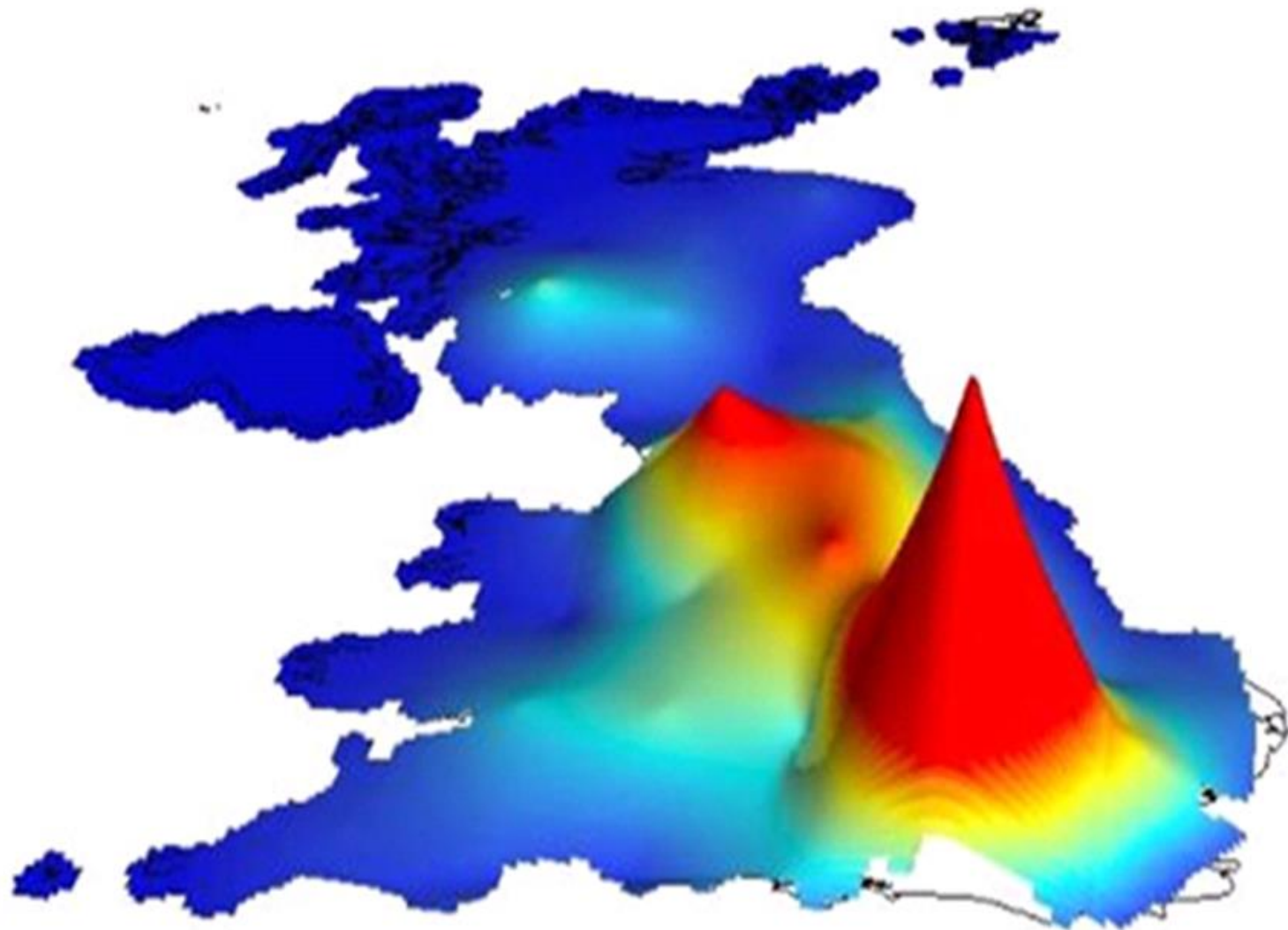


# MANCHESTER



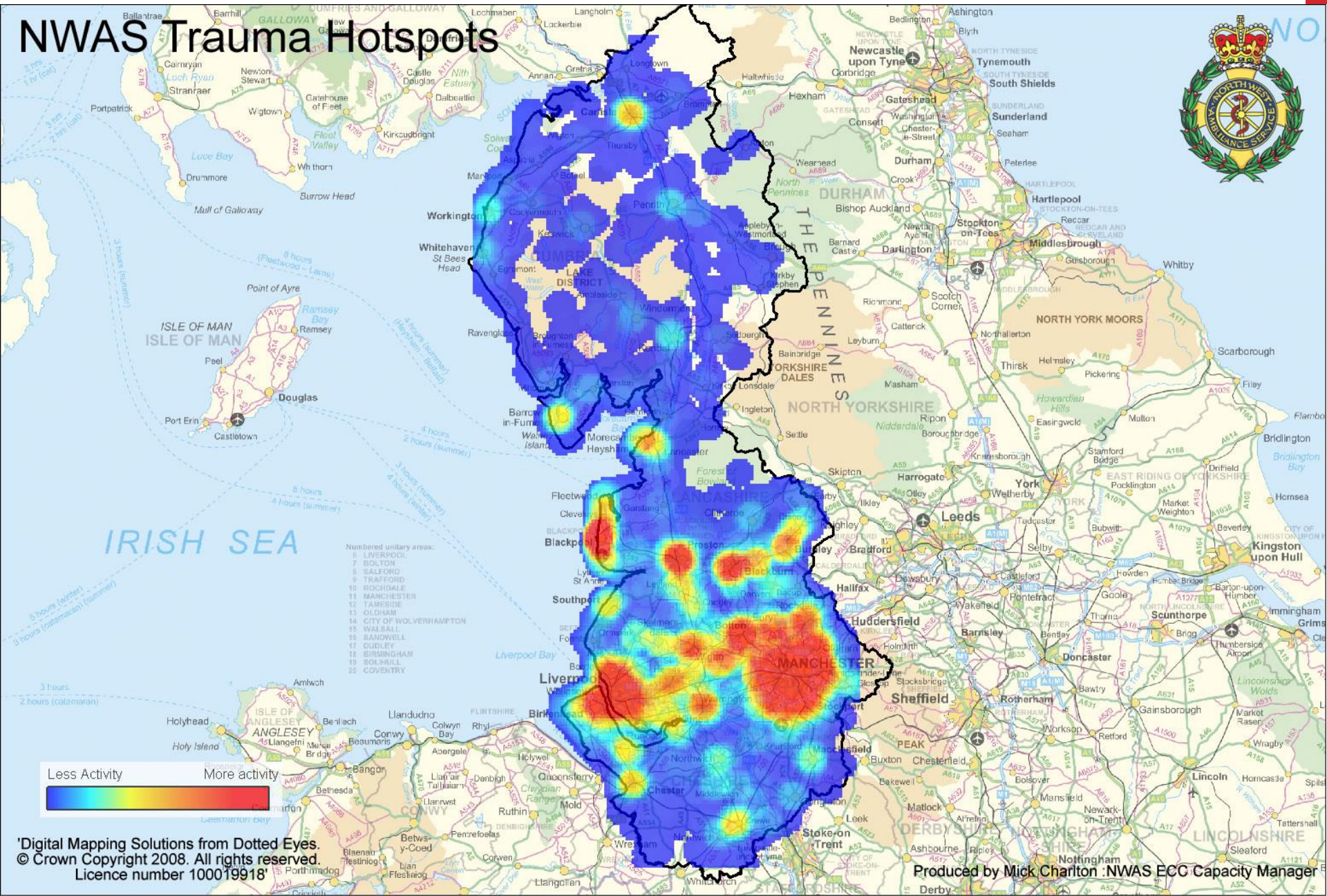
alamy stock photo

# GM is the most significant UK economic agglomeration outside London



Source: Yale University Geocon Project

# NWAS Trauma Hotspots



- Numbered unitary areas:
- 6 LIVERPOOL
  - 7 BOLTON
  - 8 SALFORD
  - 9 TRAFFORD
  - 10 ROCHDALE
  - 11 MANCHESTER
  - 13 TAMESIDE
  - 14 CITY OF WOLVERHAMPTON
  - 15 WALSALL
  - 16 SANDWELL
  - 17 GUILDFORD
  - 19 BIRMINGHAM
  - 19 SOLIHULL
  - 25 COVENTRY



'Digital Mapping Solutions from Dotted Eyes.  
 © Crown Copyright 2008. All rights reserved.  
 Licence number 100019918'

Produced by Mick Charlton :NWAS ECC Capacity Manager

# Was it inevitable?

13/11/2015

22/03/2016

14/07/2016

## the guardian

### Over 150 dead in Paris carnage

- Bloodiest attack at rock concert venue
- Shootings and blasts appear to be coordinated
- Hollande declares state of emergency



Paris fire brigades officers assist a casualty of the shootings near the Bataclan concert hall in Paris after terrorists targeted the city last night. At least 150 people are believed to have died in several incidents throughout the city last night.

### 'What we feared has happened'

Belgian prime minister Charles Michel

Inside Attacks: New events unfolded in Brussels. Say of horror

Analysis: Belgium's growing problem with IS

Aftermath: Security tightened across Europe

## the guardian

### At least 31 killed after terror attacks rip through Brussels

- Up to 250 hurt in double attack on city
- Hunt for third man behind airport blasts
- Isis claims responsibility for murders

At least 31 people were killed and up to 250 injured in a double attack on Brussels last night, Belgian officials said. The attacks, which took place in the city's financial district, were the deadliest in Belgium's history. The prime minister, Charles Michel, said the attacks were "a tragedy for Belgium and for Europe". He also said that the attacks were "clearly coordinated" and that they were "aimed at the heart of Brussels".

The Belgian government has declared a state of emergency and has tightened security across the country. The police are currently searching for a third suspect who is believed to have been involved in the airport blasts that preceded the main attack.

ISIL has claimed responsibility for the attacks, saying that they were part of a "global jihad" against the West. The group said that the attacks were "a warning to the world" and that they would continue to carry out similar attacks in the future.



## nice-matin

vendredi 13 juillet 2016 Le grand quotidien du Sud-Est nice-matin.com

# Carnage à Nice

9 PAGES SPÉCIALES DE 2 À 10

Le chauffeur d'un camion a foncé hier soir vers 22 h 30 sur la foule rassemblée sur la Promenade

**URGENT CHRISTMAS APPEAL**

When you're Christmas, Christmas can be the hardest time of all - but a gift of £22.26 can help.

Reserve a place for just £22.26

Call 0800 999 2060. Go to [www.crisis.org.uk](http://www.crisis.org.uk) Thank you.

**CRISIS**

19/12/2016

22/03/2017



# EARLY 2016

"By failing to  
prepare, you are  
preparing to fail."

*Benjamin Franklin*



**Post Birmingham meeting...**

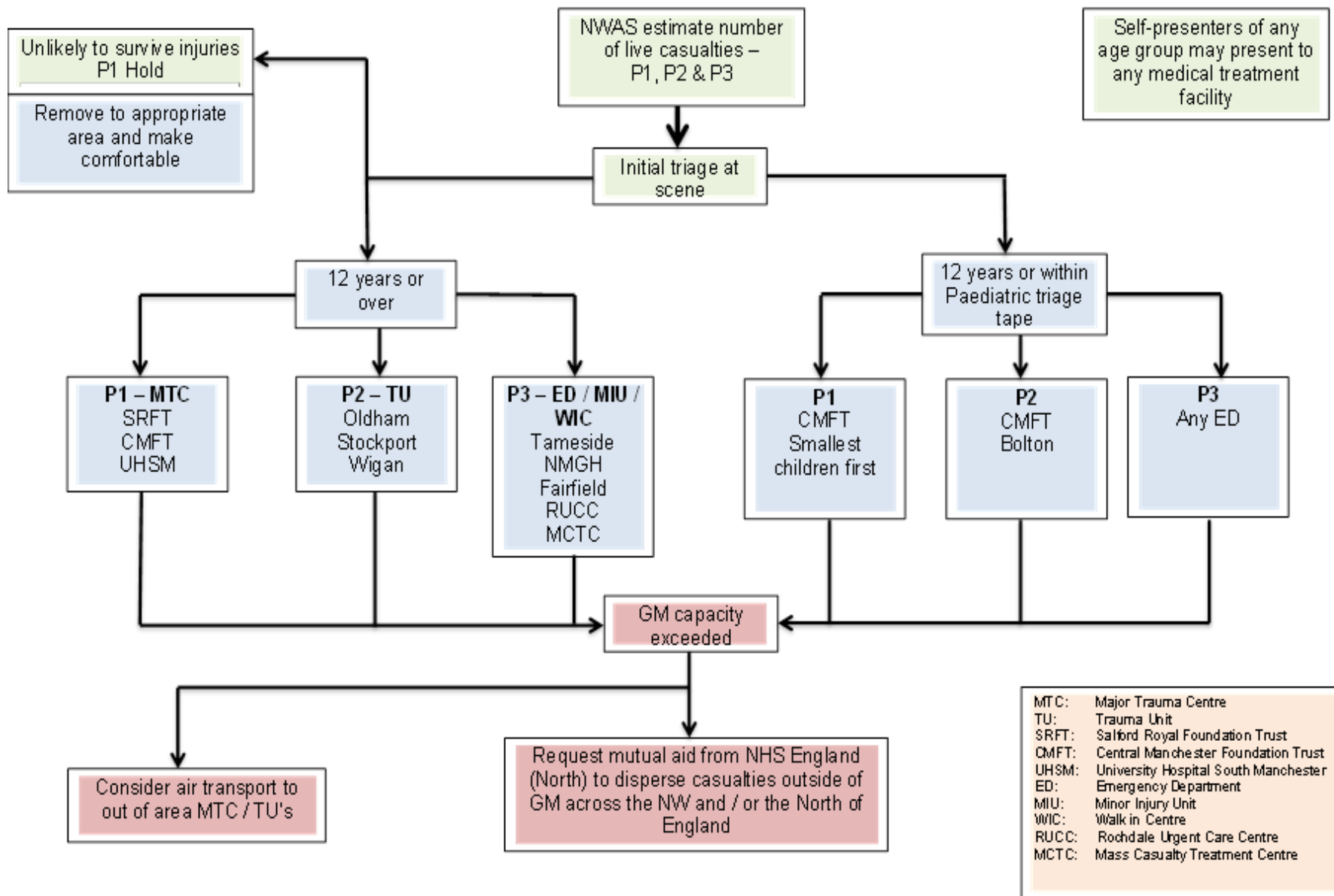
**Greater Manchester  
reconfiguration (update to  
GM EPRR plan)**

**GM Health & Social Care  
Partnership EPRR meetings**

**NWAS needs...**

**Major Incident exercise  
(Elsa/ Socrates)**

# EPRR – PATIENT DISPERSAL FRAMEWORK



# EPRR – GM CASUALTY CAPABILITY CHART

Over 12 years				Under 12 years		
Pre-determined GM P1 capability for the first 2 hours	Salford Royal 20	CMFT 20	UHSM 20	CMFT 20		
Pre-determined GM P2 capability for the first 2 hours	Oldham 15	Stockport 15	Wigan 15	Bolton 10		
Pre-determined GM P3 capability for the first 2 hours	Tameside 40	NMGH 30	RUCC 10	Fairfield 20	Bolton 20	WIC/ MIU + Mass Casualty Treatment Centres*
P3 adults				Paeds		

Total capacity for GM: **c 300**: General concept is P1 to MTCs, P2 to TUs, P3 to other sites (P2 could travel to MTCs if P1 aren't present in sufficient quantity)

Note: The figures above relate to the first 2 hours and should be viewed in the context of incidents producing mass numbers of casualties (300+): within smaller incidents the figures for each unit will be lower.

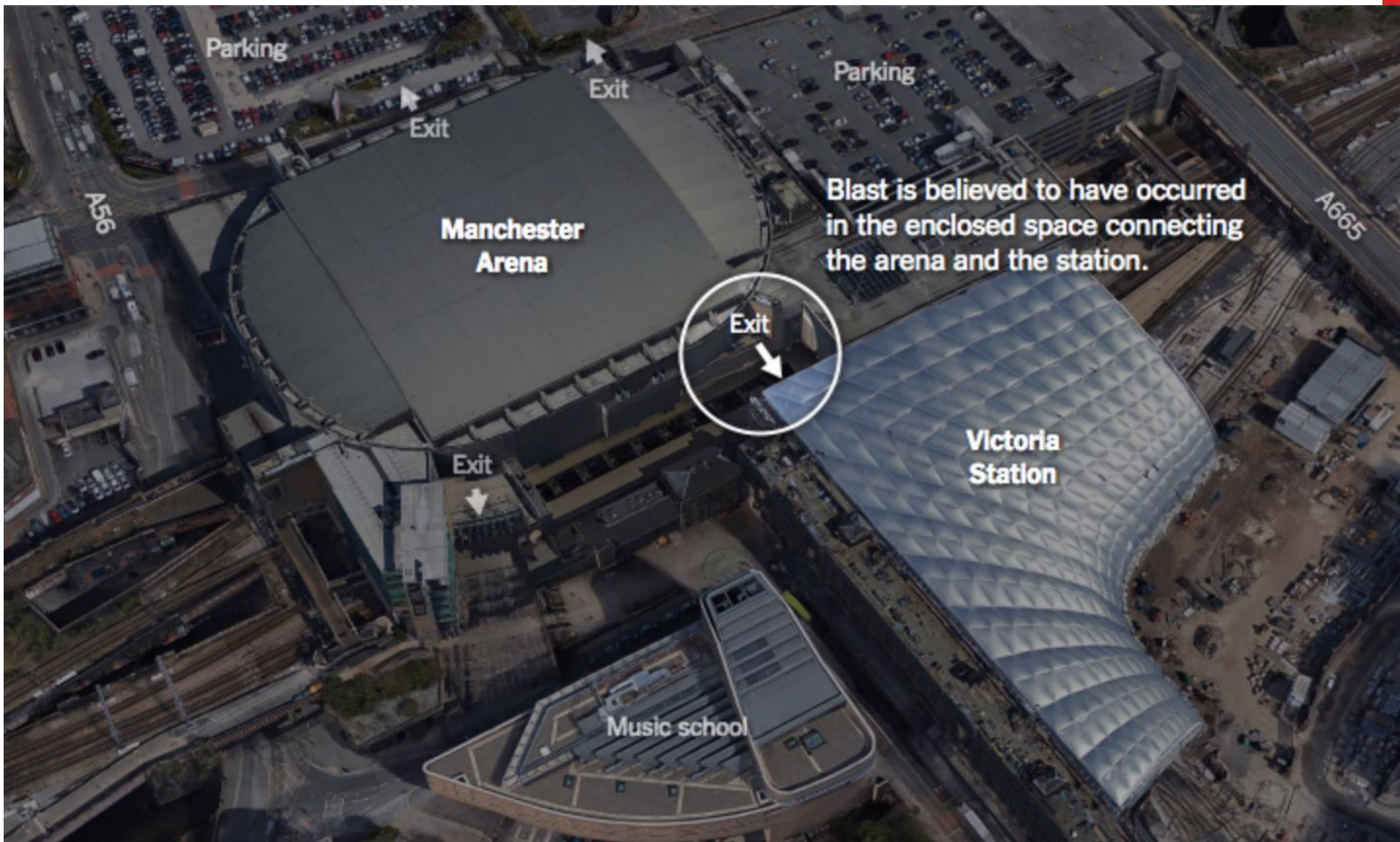
Within practicalities the intention is that stroke will flow to Fairfield and angio to UHSM sites.

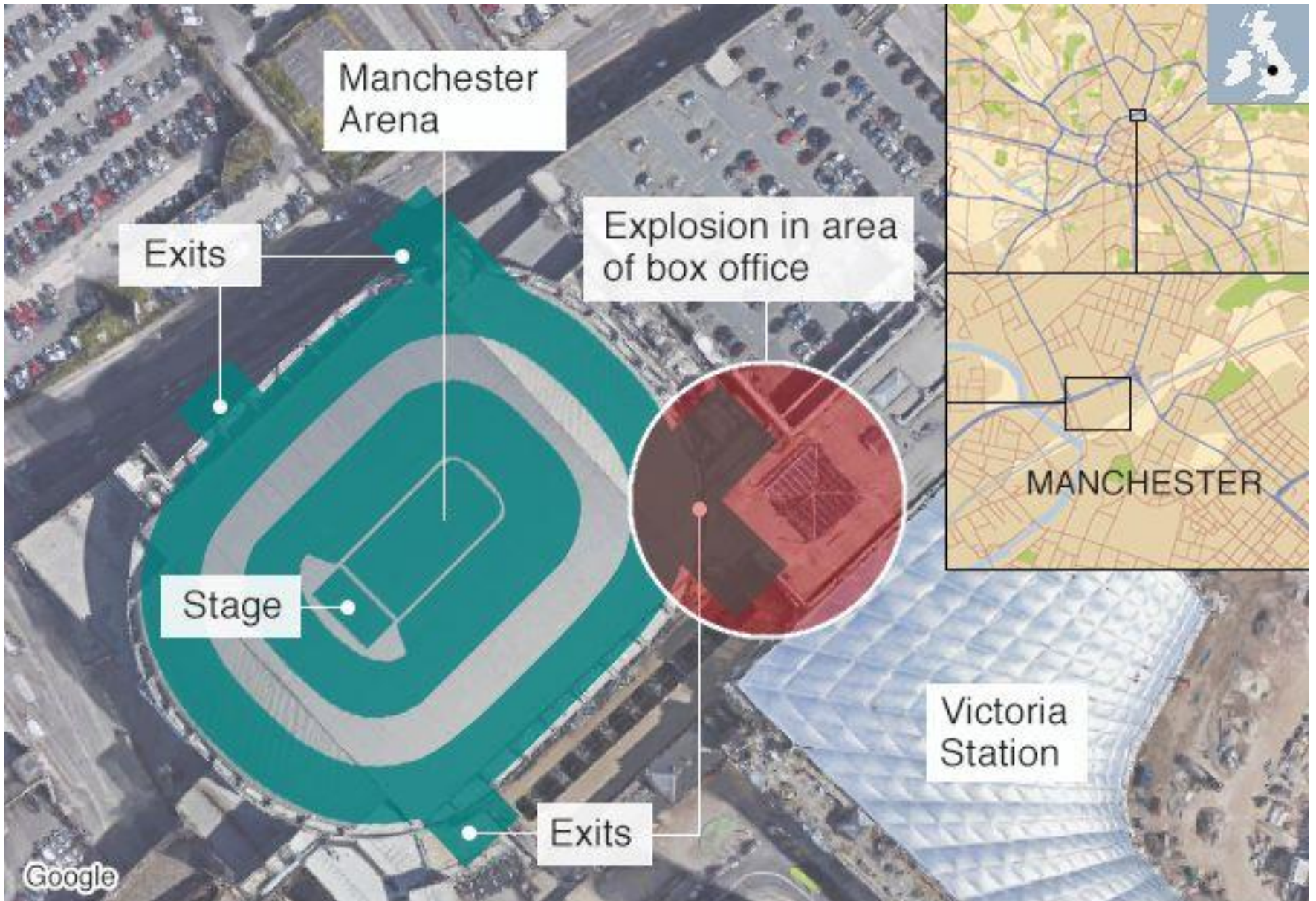
\* Mass Casualty Treatment Centres (MCTC): specific none acute hospital sites designated and developed for treatment of P3 and “worried-well” in the event of a mass casualty incident exceeding capacity available (Plan in the process of being developed, however, currently on a goodwill and best intentions basis).

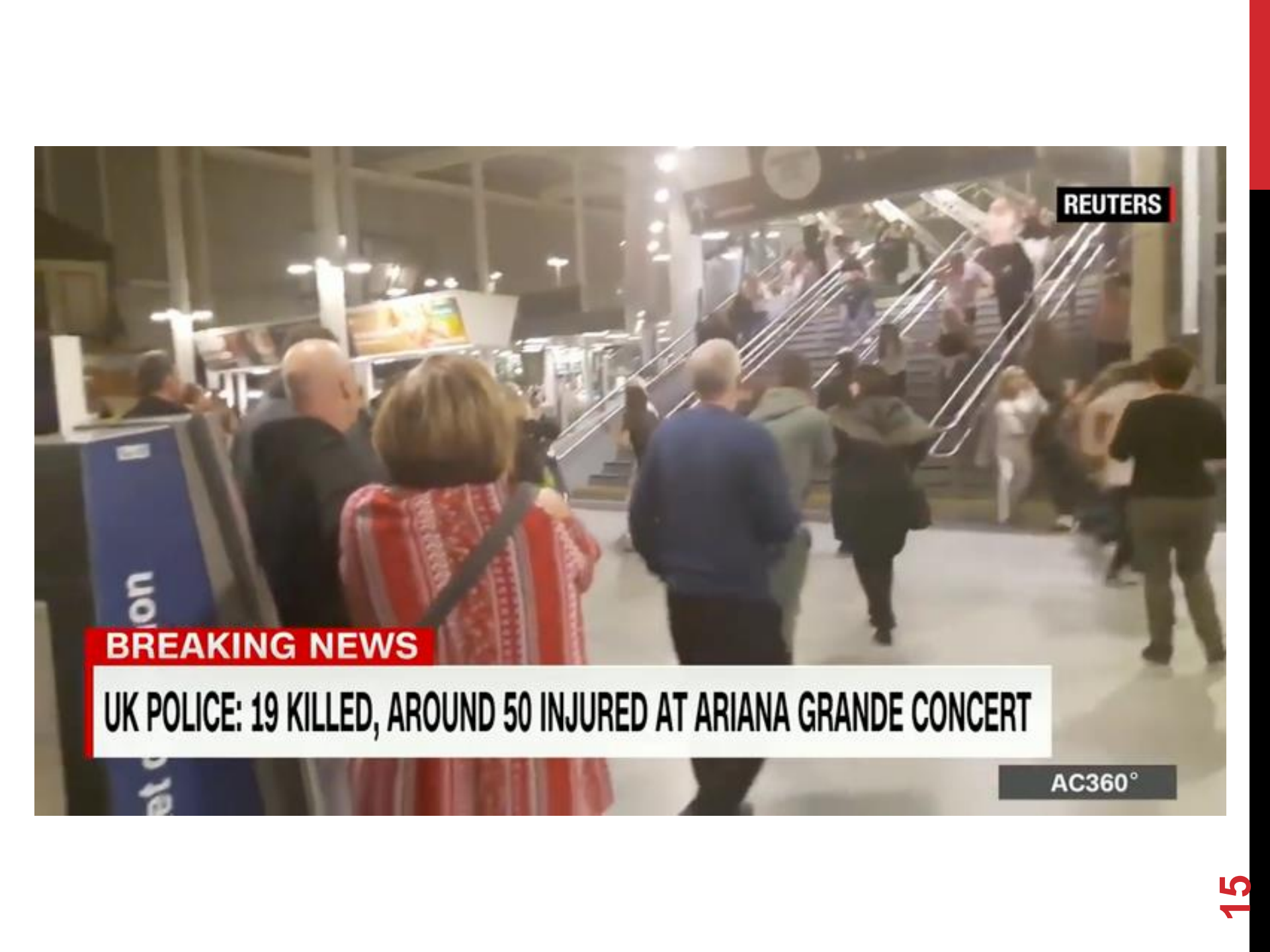
One night in May - Pop Start Princess

**DANGEROUS WOMAN TOUR**  
**ARIANA GRANDE**









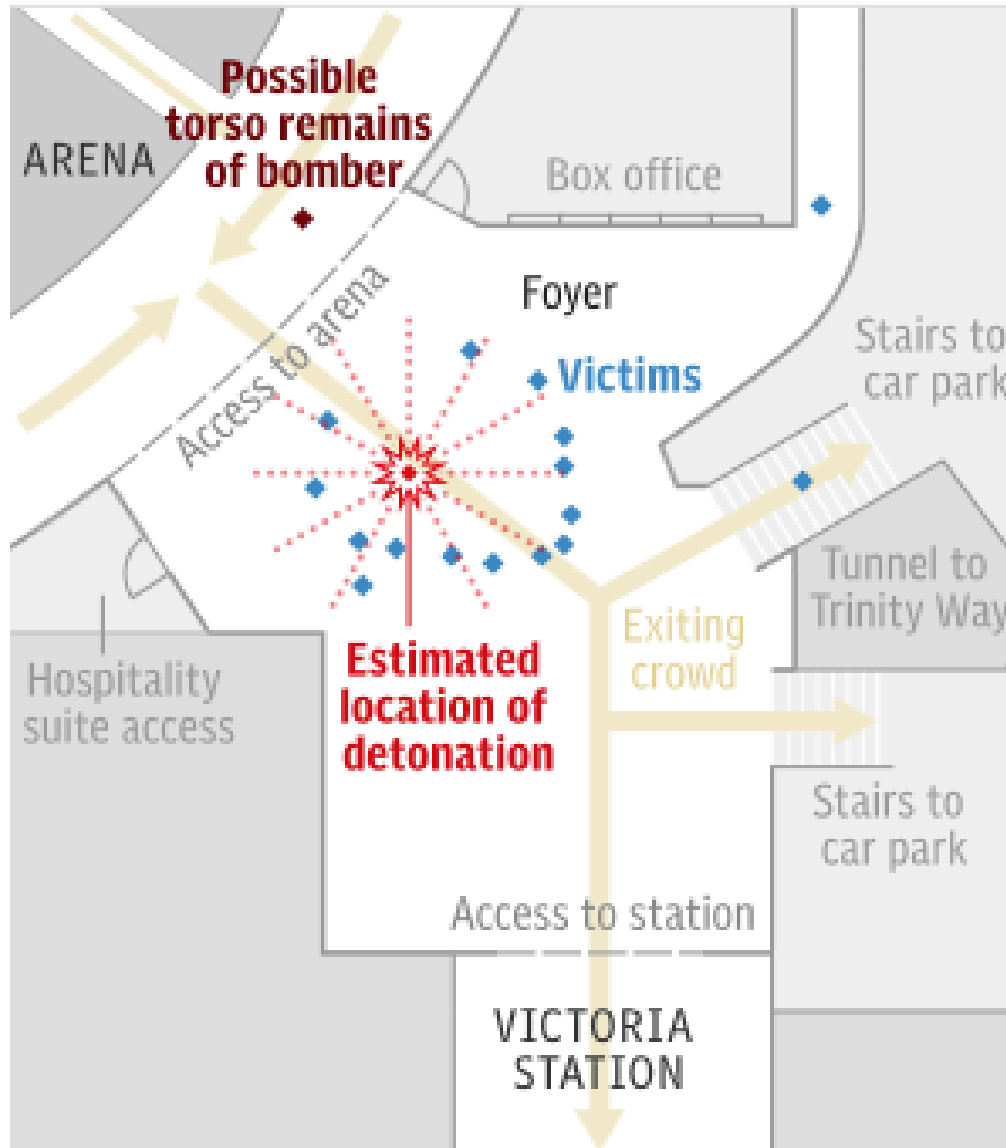
REUTERS

**BREAKING NEWS**

**UK POLICE: 19 KILLED, AROUND 50 INJURED AT ARIANA GRANDE CONCERT**

AC360°

# Area of bomb detonation









 **NWAS NHS Trust**   
@NWAmbulance

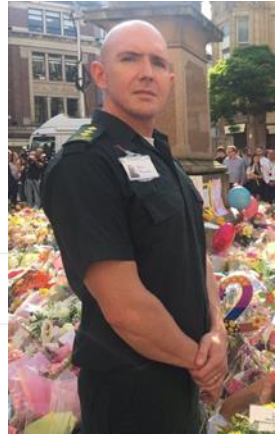
We confirm that we are responding to an incident at the Manchester Arena. Please follow [@gmpolice](#) for updates at this time.

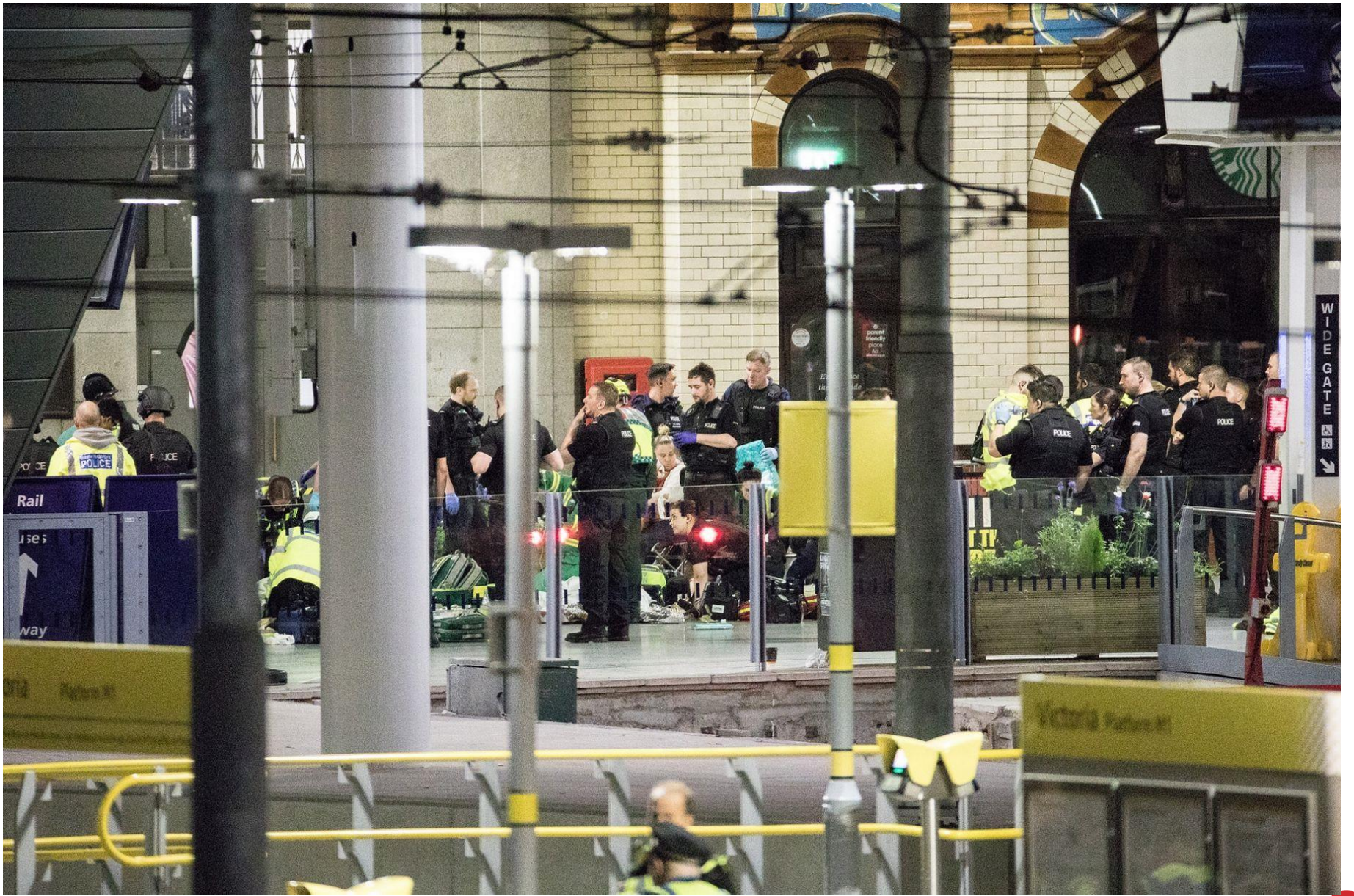
RETWEETS 261 LIKES 166



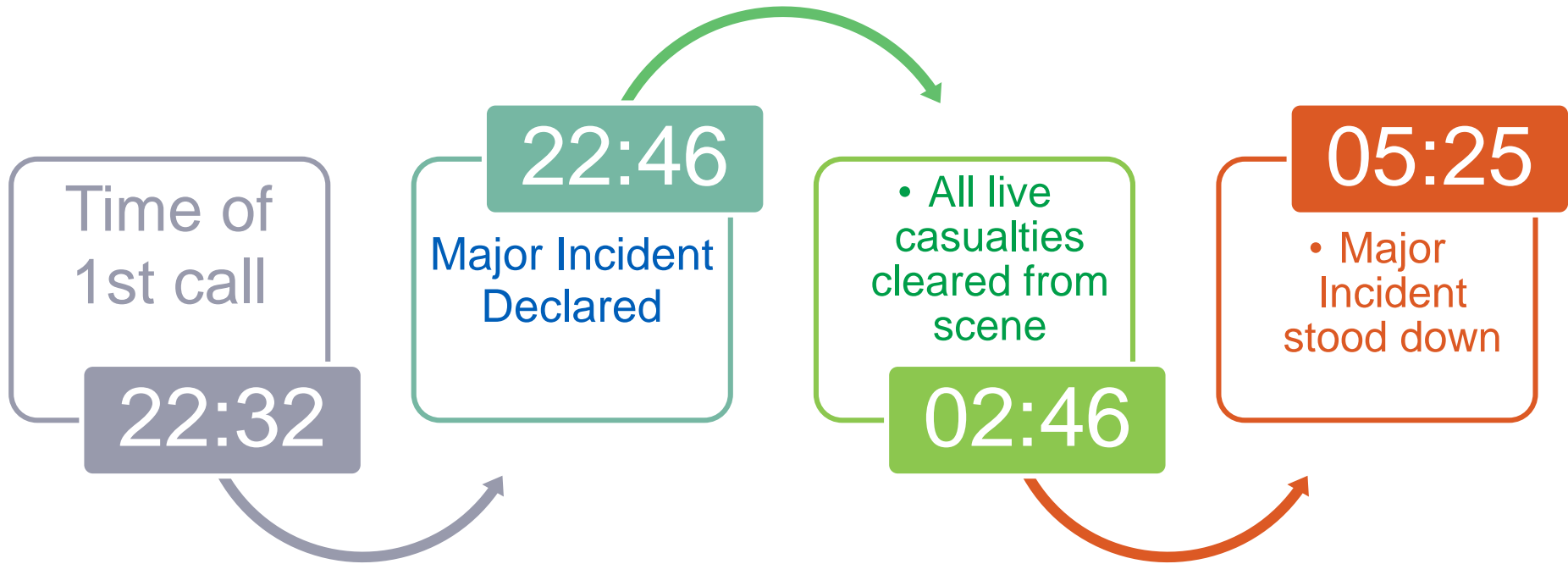
11:21 PM - 22 May 2017

 13  261  166 





# A GM TIMELINE



## **NWAS ON-SCENE RESOURCE**

### Number of resources by type:

Paramedic Ambulances – 60

RRV – 8

APs/CPs – 6

Doctors – 5 at scene 1 in area command

HART – 3 teams (2 NWAS teams + EMAS in to Manchester for support)

**Total staff – 300**

# CASUALTY DISPERSAL

Trauma status	Hosp name	NWAS (from scene)	Total attended hospital	RIP (ED)	Admissions	Critical care
MTC	MRI (CMFT)	9	30	2	21	5
MTC (P)	RMCH (CMFT)	12	34 (5 Ad)	1	14	6
MTC	SRFT	6	11	-	7	4
MTC	UHSM	6	16	-	13	7
TU	ROH	7	14 (4 Ch)	-	6 (2 Ch)	-
TU	SHH	6	11 (2 Ch)	-	7 (1 Ch)	3
TU	WWL	-	-	-	-	-
LEH	NMGH	5	17 (3 Ch)	-	9	2
LEH	TGH	-	7 (3 Ch)	-	2	-
LEH	RBH	8	17 (6 Ch)	-	8 (2 Ch)	1
LEH	FGH	-	3	-	0	-
<b>Totals</b>		<b>59</b>	<b>160</b>	<b>3</b>	<b>87</b>	<b>28</b>

# CASUALTY DISPERSAL



## **CMFT RESPONSE**

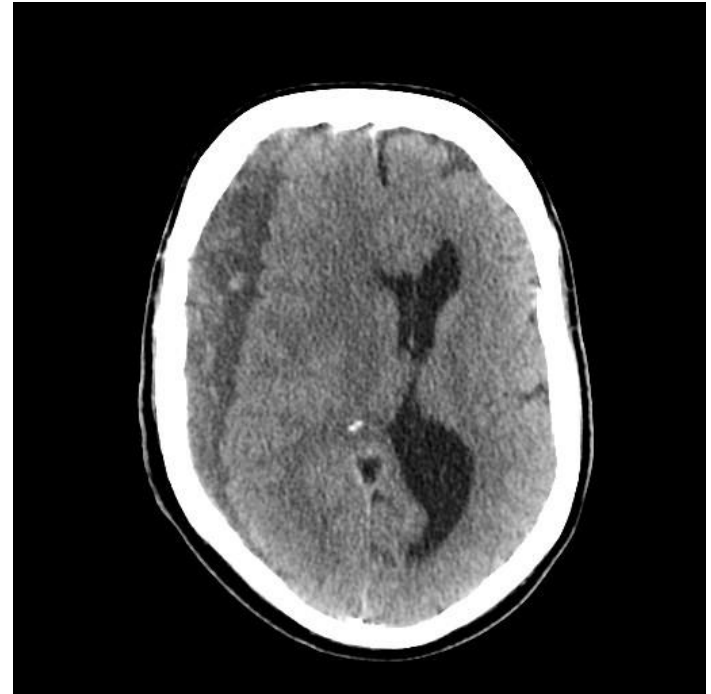
**22.40 MAJOR INCIDENT DECLARED – GMP**

**22.46 MAJOR INCIDENT DECLARED – NWS**

**22.52 “WHATSAPP” ALERT TO ED TEAM.  
DEPARTMENTS CLEARED TO RECEIVE PATIENTS**



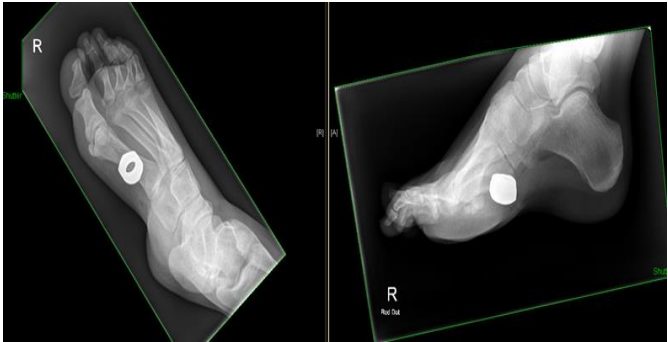
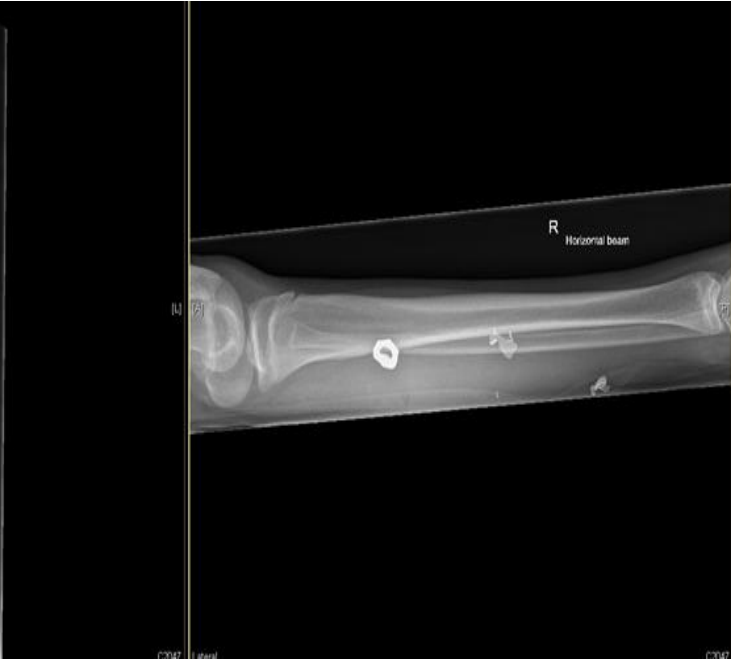
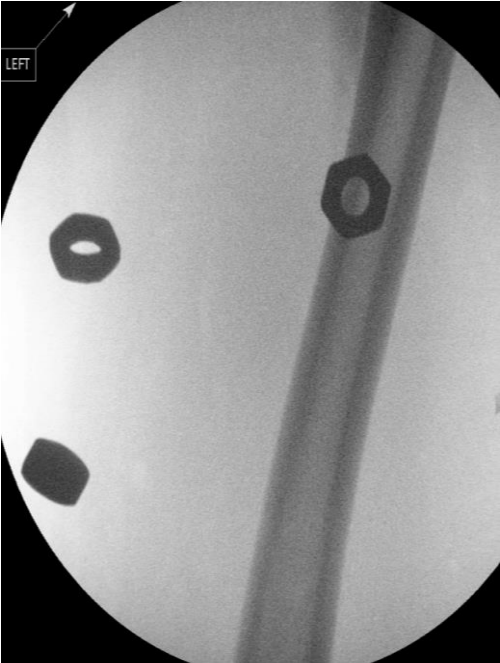
# BEWARE CURRENT PATIENTS



## **HOWEVER – CLEAR THE DECKS...**

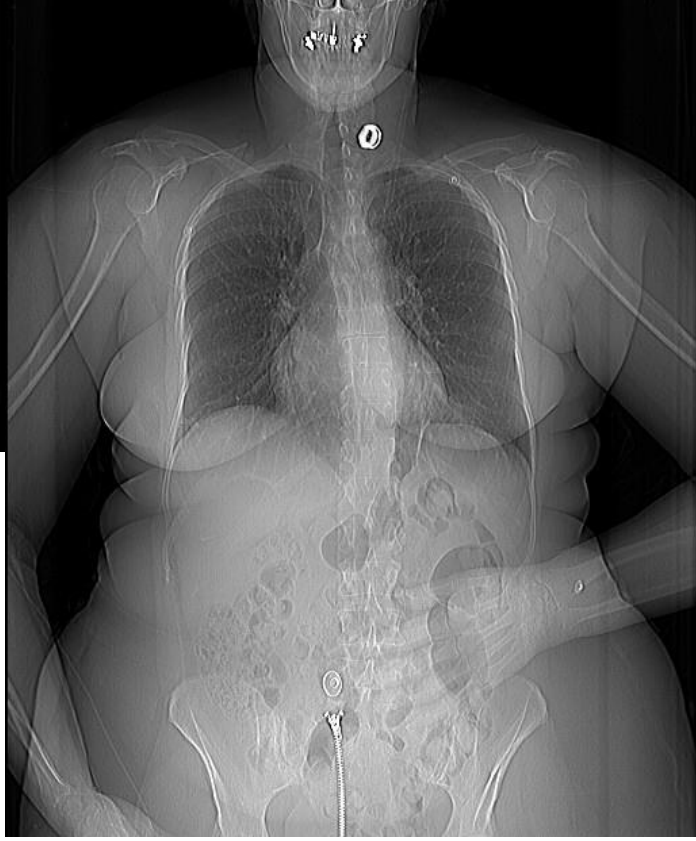
- 22.58**            **PED - GMP 8F P1 + MUM P3 AND  
DAD P3  
SEEN BY DUTY CONSULTANT  
LEADING MT TEAM - SHRAPNEL**
- 23.04**            **56F – GMP – BOLT THROUGH NECK**
- 23.21**            **3 X P3 “OWN TRANSPORT” – LEG  
WOUNDS**

# INJURIES CAUSED BY SHRAPNEL



# WHOLE BODY CT FOR ALL





# **MRI CONSULTANTS DURING NIGHT OF 22/23 MAY**

<b>Emergency Department</b>	<b>8</b>
<b>Orthopaedics</b>	<b>4</b>
<b>General Surgery</b>	<b>2</b>
<b>Vascular Surgery</b>	<b>3</b>
<b>CT Surgery</b>	<b>4</b>
<b>Anaesthetics</b>	<b>11</b>
<b>ICU</b>	<b>9</b>
<b>Radiology (+IR)</b>	<b>4</b>
<b>Burns and Plastics (USHM)</b>	<b>1</b>

**Multiple middle grades all specialities**

# RMCH CONSULTANTS DURING NIGHT OF 22/23 MAY

<b>Emergency Department</b>	<b>4</b>
<b>Paediatric Orthopaedics</b>	<b>4</b>
<b>Burns and Plastics</b>	<b>4+</b>
<b>Paediatric Neurosurgery</b>	<b>4+</b>
<b>Paediatric ENT</b>	<b>4</b>
<b>Paediatric Surgery</b>	<b>5</b>
<b>Paediatric Anaesthetics</b>	<b>11</b>
<b>Paediatric Radiology</b>	<b>1 +</b>
<b>Paediatrician support</b>	<b>2</b>
<b>CAMHS support</b>	

**Multiple middle grades all specialities**

# **CAPACITY**

## **CMFT**

- 13 adult ICU beds cleared**
- 10 PICU beds cleared (8 across northern network)**
- 2 NWTs transfers to Alder Hey**
- 4 Adult Theatres running o/n**
- 4 Paeds Theatres running o/n**

## **Network**

- 23 Theatres running o/n**
  
- MRI closed to Trauma for 1/7**
- RMCH closed to Trauma for 7/7**
- Plastics closed to Trauma for 10/7**



# A VERY LONG TAIL...



# SERVICE IMPACT

- **22 additional trauma lists over first 10 days – 6 in first 18 hours**
- **58 operations in the adult cohort**
- **90 hours of operating**
- **5 patients in critical care for 12 days**
- **38 elective cases re-scheduled for surgery**
- **150 out patient appointments re-scheduled**
- **Cost to the organisation in lost income from displaced activities, additional costs in excess of £ 2.4 million**

Day	Total hours in Theatre	No. Children in Theatre
Tuesday	26	14
Wednesday	8.75	2
Thursday	12.25	6
Friday	1.75	2
Saturday	3.75	3
Sunday	0	0
Monday( Bank Holiday)	0.5	1
Tuesday	7	3
Wednesday	3	2
Thursday	2	1
Friday	2	2
Total	67	36

# **Bereavement Care & Support**

## **Overview**



**SWAN Model implemented for all 22 families**

**20 families attended Trafford Mortuary**

**2 families contacted & supported in a different way**

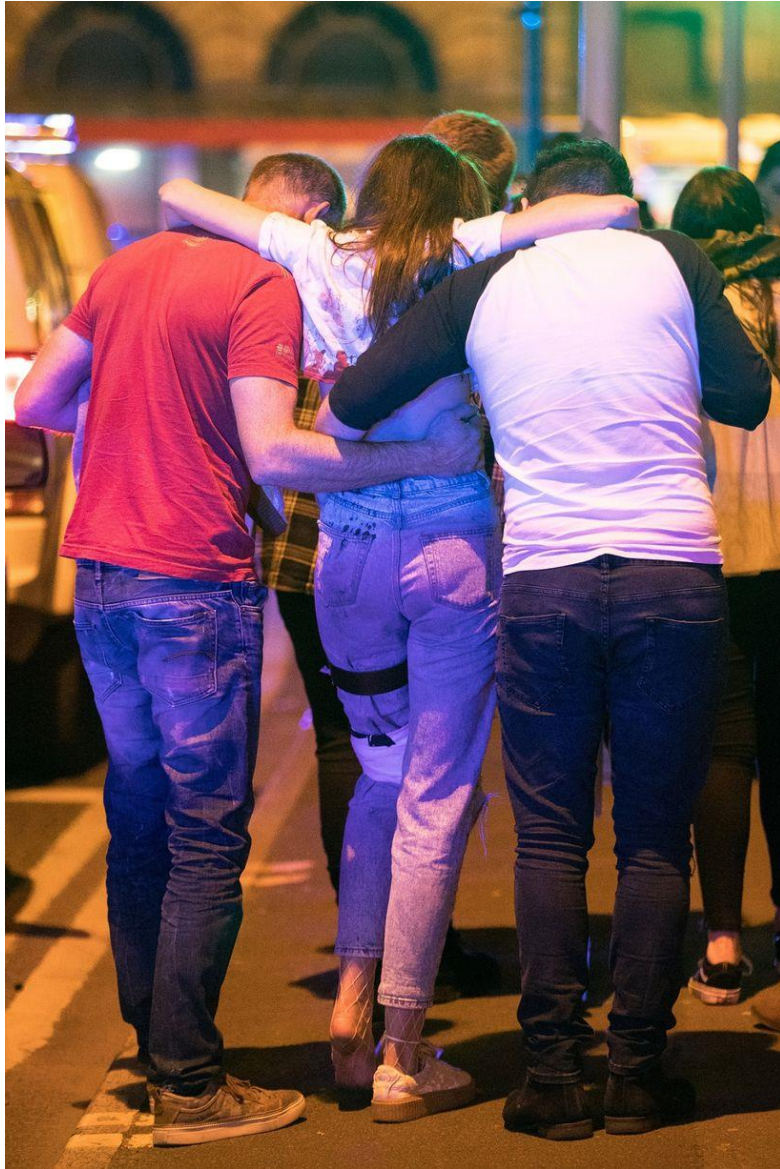
**Collaborative cross boundary working**

**24/7 helpline & triage system implemented**

**First 72hrs families supported by the bereavement team 24/7**

**All 22 families have a named bereavement nurse for follow up care**

# BEWARE



# THE GEOGRAPHY CHALLENGE



# SECURITY



Laura Bailey-Wood

1 hr · Oldham · 🌐

DO NOT COME OLDHAM HOSPITAL IM CURRENTLY LOCKED INSIDE... MAN OUTSIDE WITH GUN



Daily Express

@Daily\_Express

Follow

Buffer

BREAKING: 'Gunman' outside Oldham hospital just moments after Manchester concert 'blast' [#Manchester](https://bit.ly/2rKou3q) [bit.ly/2rKou3q](https://bit.ly/2rKou3q)



# THE PRESS



# BLOODY VIP'S





# UNKNOWNNS



# **INSTITUTIONAL LEARNING**

**COMMUNICATION POST ACUTE PHASE**

**POST INCIDENT DOCUMENTATION NEEDS TO BE STANDARDISED (NETWORK OR NATIONAL LEVEL)**

**HANDOVER OF PATIENT LOCATION**

**RECORDS OF AVAILABLE EQUIPMENT/LOCATION**

**SUSTAINABILITY**

**CONSISTENCY OF SURGICAL MANAGEMENT**

**CONSIDER DIFFERING SURGICAL TEAM REQUIREMENTS**

**KEEPING FAMILIES TOGETHER**

**CAMHS PLAN**

**CLINICAL LEADS**

**JUNIOR SUPPORT**

**SOCIAL MEDIA**

**MEDIA AND CELEBRITY VISITS NEED A DEDICATED MANAGEMENT**

**STREAM**

# LIFE CONTINUES



# GMR



# A CITY RECOVERS



## **FOR THE FUTURE.....**

**Closer Working With Networks – Understanding Your Neighbouring Network's Dispersal Plan & Specialty Matrix**

**Better Definition Of Roles – *Gold Command Vs. Network***

**Clarity Over 'Official' Figures**

**Need Better Protocols For Data Collection / Sharing**

*Pro Forma*

*Nominated Data People In Trusts*

**NHS Passports**

**Cruciform Triage Card Tracking**

**Supplies (Ex-fix, Theatre Sets, Wheelchairs)**

**Role Of Enhanced Care Teams**



**[alistair.rennie@mft.nhs.uk](mailto:alistair.rennie@mft.nhs.uk)**  
**[@DrDaleview](#)**