

Additional Petrographic Services

Photomicrography, Optical Microscopy, XRD, XRF, & SEM-EDS

Photomicrographs of Your Thin or Polished Sections:

\$125/per set per sample

For an additional \$125, you can request photomicrographs of your thin or polished sections in a CD, taken by using high-resolution, latest-model, state-of-the-art digital cameras attached to research-grade petrographic microscopes. Set includes a full scan of your thin section in both plain and crossed polarized-light modes, as well as at least three sets of plane and cross polarized-light micrographs will be provided per sample, with scale bars, depicting the detailed mineralogy, grain and pore size distribution, and texture of the rock.

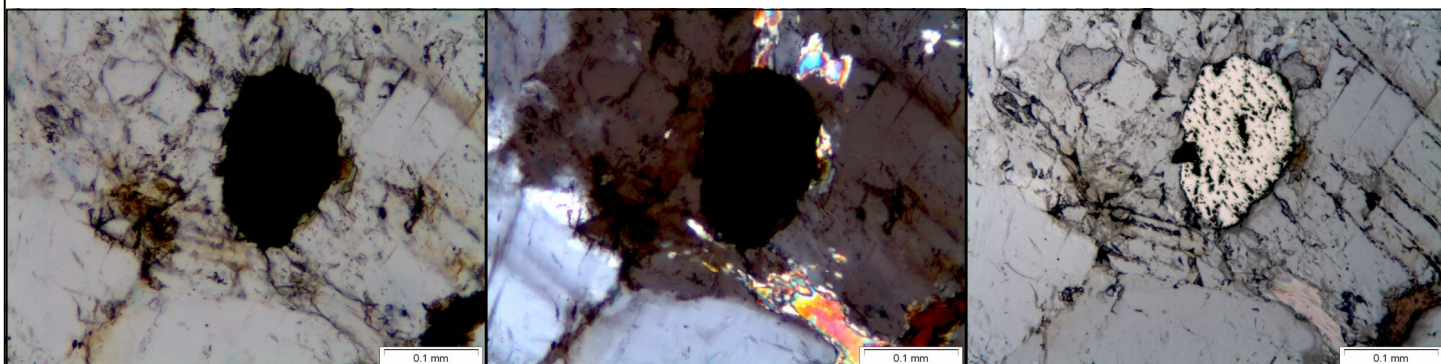
Petrographic Examinations:

\$1000 per sample

Optical Microscopical examinations of thin sections in plane and cross polarized lights, and polished sections in reflected-light, XRD, XRF, SEM, etc. to determine detailed mineralogy, estimated modal (volume) proportions of different minerals, texture and microstructure, alteration, classification, and type of rock. Each report will include at least one set of photomicrographs per sample taken in plane and cross polarized-light modes with a high-resolution digital camera attached to a research-grade petrographic microscope. Price includes optical microscopy, XRD, XRF, SEM, and sample preparation.

Report of Petrographic Examinations:

\$250 per report



Applied Petrographic Services, Inc.
Berkshire Center, Suite 103B, 4727 Rt. 30, Greensburg, PA 15601
724-834-3559 (Tel) 800-899-0522 (Toll Free) 724-834-3556 (Fax) www.petrography.net