



Volume 105 November 2021  
9030 Forestview Lane N. Maple Grove, MN 55369 763-494-5983 Open 2nd Sunday of the month

**MAPLE GROVE HISTORICAL  
PRESERVATION SOCIETY**

**OFFICERS**

- President: Al Madsen**
- Vice President: Lynn Cook**
- Secretary: Karen Brajidich**
- Treasurer: Patty Reuter**
- Newsletter Editor: Pat Ruffing**
- Research: Mary Moyle, Rosie Gruidl,  
& Karen Brajidich**
- Web page designer: Steve Briggs**

**Purpose:** To collect and preserve information and artifacts and to educate the community of the history of Maple Grove, MN.

**Regular**



**Events**

**Open House:** the Maple Grove History Museum hosts an open house on the second Sunday of every month from 1:00 p.m. - 4:00 p.m.

**Monthly Meeting:** The third Thursday of the month at 6:30 p.m. at the History Museum. Interested in history? Please join us!

**Quarterly Newsletter:**  
Feb.: Your stories about the telephone!  
May: Letters through the Mail- mail delivery-post offices

**Ox Cart site & territorial downtown Maple Grove:** 15310 Territorial Rd (0.7 mi. w. of Fernbrook Lane N. Maple Grove)

**Pierre Bottineau House:** Elm Creek Park Reserve: 12400 James Deane Parkway, Maple Grove

**4 History Display Cases at M.G. Gov't Center:** 12800 Arbor Lakes Pkwy N. Maple Grove

**January:** Annual dues  
**October:** Election of officers at regular meeting

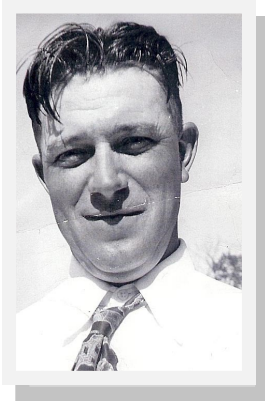


December 16th at 6 pm  
Party at the Museum  
Invite your family & prospective members  
Bring your favorite holiday dish  
For all to savor



# The 5 Mayors of Maple Grove

By The Research Committee: : Mary Moyle, Rosie Gruidl, & Karen Brajdich



**Elmer Weber**  
1954-1965

- ◆ Grew up Fletcher, Minnesota
- ◆ Attended school until 6th grade
- ◆ Worked at a still in Osseo, was arrested and sent to the workhouse
- ◆ Promised to campaign for the judge on his case for the next election
- ◆ Judge won the election and Weber's sentence was dropped
- ◆ Six-term mayor
- ◆ Supported planning and basic services to citizens of Maple Grove
- ◆ Documented and numbered citizens' homes in Maple Grove for police and fire departments.
- ◆ Passed away 1977 and buried at St. Vincent's Cemetery.

**Richard Reimer**  
1965-1980



- ◆ Raised in Minneapolis and loved music from childhood
- ◆ Graduated from North High School
- ◆ Joined the US Navy from 1942-1946
- ◆ After the navy, he tried earning a living with band gigs.
- ◆ A favorite tune was "In The Mood"
- ◆ Worked as a realtor, then launched his own construction company
- ◆ Built many homes in Brooklyn Center and New Hope
- ◆ Was elected to Maple Grove city council in 1948
- ◆ Planning commissioner in early 1950s
- ◆ Was elected mayor in 1965

- ◆ Started the Maple Grove Police Department, Fire Department and Elm Creek Park Commission
- ◆ Raised Rice Lake from swamp to lake
- ◆ Died 2011 and buried at St. Vincent's Cemetery.

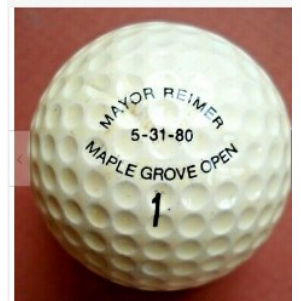


**James**  
1981-



**Deane**  
1994

- ◆ Born in St. Paul
- ◆ Started teaching several subjects in the Osseo schools in 1958
- ◆ By 1970 was voted Dist. 279 Teacher of the Year
- ◆ Coached cross country running, track and field and girls cross country skiing
- ◆ 1970 was voted Coach of the Year in Cross Country by the Minnesota Cross Country Coaches Association
- ◆ Started the cross country alumni run which still meets
- ◆ On Maple Grove park board 1966-1971
- ◆ Instrumental in long-range park plan with over 55 miles of trails
- ◆ On city council 1966-1980
- ◆ As mayor, helped Maple Grove grow from rural to busy suburb
- ◆ 3 Rivers Park commissioner in 1997, its chairperson in 1999-2006
- ◆ Helped develop Elm Creek Park Reserve
- ◆ Instrumental in dropping entrance fees at 3 Rivers parks
- ◆ Believed in the preservation of Maple Grove's history
- ◆ Took an active role in Maple Grove Historic Preservation Society.
- ◆ Died 2015 and buried at St. Vincent's cemetery



# The 5 Mayors of Maple Grove

Cont. By The Research Committee

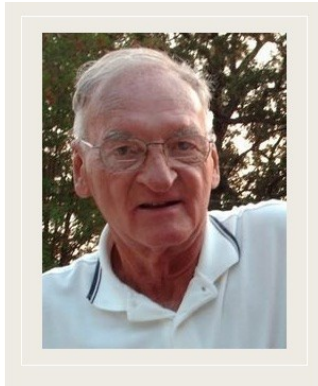
Karen Brajdich

Mary Moyle,

Rosie Gruidl, &



**Bob Burlingame**  
1995-2001



- ◆ Born in Minneapolis
- ◆ Worked many farm jobs in early years
- ◆ Created his own construction company
- ◆ Served Maple Grove for more than 40 years
- ◆ Became police officer in 1962
- ◆ Became police chief
- ◆ Was emergency management director from 1967 to 1992
- ◆ Elected mayor from 1995 to 2001
- ◆ Helped host the annual Maple Grove Days parade every summer.
- ◆ Died 2021 and buried in Greenfield, Minnesota

**Mark Steffenson**  
2001-present



- ◆ Born in Robbinsdale
- ◆ Came to Maple Grove about 1990
- ◆ Elected to city council
- ◆ Has served as mayor 20 years
- ◆ Interacts and supports the business community, downtown, city hall, sporting venues, community center
- ◆ Supports high paying jobs in Med Tech corporations, attracting largest in the world
- ◆ Supports transportation funding and completion of HWY 610
- ◆ Appreciates community volunteers.



## Council overview from the city website

Maple Grove is a community legally established under the laws of Minnesota. It is governed by a mayor who serves a four-year term and four councilmembers who also serve four-year terms. City councilmembers serve at large. City elections coincide with the general elections held in the fall of all even numbered years.

The mayor and councilmembers are responsible for approving operating and capital improvement budgets, employing city workers, establishing city regulations and ordinances, maintaining public facilities, and planning the city's future. The chief of staff for the City Council is City Administrator Heidi Nelson.

## *Serving today, Shaping tomorrow*

The city's current logo featuring an autumn maple leaf dates from 1985. The image refers to the extensive maple trees throughout the city and represents the vast timber area, City Manager Al Madsen said. The motto, "Serving today shaping tomorrow," was added in 1985 to reflect the city's development."  
(<https://www.startribune.com/symbolism-abounds-in-city-logos/180431801/>)

**Summary of Marchand v. Town of Maple Grove, 48 Minn. 271 (1892)**

Feb. 1, 1892 · Minnesota Supreme Court  
48 Minn. 271

David Marchand vs. Town of Maple Grove  
Argued Jan. 18, 1892.

Statute Construed. — The width of a public highway acquired by adverse user is not fixed by that part of 1878 G-. S. ch. 13, § 47, which prescribes-that certain ways, therein mentioned, shall be four rods wide.

Width, of Highway Acquired by Common-Law Dedication. — Where a public highway is obtained solely by adverse user for the period of time mentioned in said section forty-seven, (47,) its width is to be measured and determined, as a question of fact, by the character and extent of the user. It is not necessarily confined to the track made by passing vehicles...

Appeal by defendant, the township of Maple Grove, from a judgment of the district court of Hennepin county, *Canty, J.*, entered August 28, 1891, in favor of plaintiff, David Marchand, for \$127.08' damages and costs.

Plaintiff owned the northwest quarter of the northeast quarter, and the northeast quarter of the northwest'quarter, of section fourteen, (14,) in township one hundred and nineteen (119) north, of range twenty-two (22) west.

In the year 1858 the supervisors of the township laid out and established a highway upon his north line four rods wide, one half of it being on plaintiff's land.

There was a marsh on the line, and, instead of bridging it in the highway, they built the bridge about sixty-three feet south of the section line.

To' connect the highway with this bridge, the township officers filled in and made approaches to it at both ends, and the road was for twenty-five years worked and traveled,... In 1887 plaintiff built a wire fence along the south side of, and two rods distant from, the thread of the road as traveled and worked.

In June, 1890, the-township officers, to improve the road through the low land at each end of the bridge, dug up earth east of the marsh, south of and within two rods of the thread of the highway as traveled, and used it in raising and widening the approaches to the bridge.

The plaintiff claimed that the township had not acquired the right to do this for such width, and brought this suit to recover damages for trespass.

The defendant claimed that the right acquired by more than twenty years of adverse use extended for two rods on either side of the line as traveled. The issues were tried May 14, 1891. The jury rendered a verdict for plaintiff, and assessed' his damages at \$79.50. Defendant moved for a new trial, but it was denied, and judgment was entered on the verdict.

**Roads 1892**

Public Cartway to be layed out hereby petition you to lay out a Public Cartway of the width of (two) rods as follows: Beginning at the Southwest corner of the Northwest quarter Section thirteen Town One hundred & nineteen Range twenty two, thence running North on the Section line (or as near as practicable) between Sections thirteen & fourteen and twelve & eleven to the Northwest corner of section Twelve, all in Town One hundred & nineteen Range twenty two, there to terminate.

Helena Wilmes	S ½ NW ¼
Peter Wilmes	N ½ NW ¼
David Marchand	NE ¼ NE ¼
W. S. Colburn	SE ¼ NE ¼
David Marchand	SE ¼ SE ¼
Peter Wilmes	N ½ SE ¼
Philip Kiefer (Deceased)	S ½ NE ¼
John Engels (Deceased)	NE ¼ NE ¼
David Marchand	SW ¼ SW ¼
R. B. Langdon	NW ¼ SW ¼
Philip Kiefer (Deceased)	S ½ NW ¼
Nicolas Kish	S ½ N ½ NW ¼
John Engels (Deceased)	N ½ N ½ NW ¼
Great Northern R.R. Co.	One hundred feet wide in N ½ NW ¼
" " " "	One hundred feet wide in NE ¼ NE ¼

And your petitioners pray that you will proceed to lay out said Public Cartway and cause the same to be opened according to law.  
Dated at Maple Grove this 25<sup>th</sup> day of January A.D 1892

Peter Wilmes	Fred Ebert	Nicolas Aubert
John W. Schulz	Fred Gible	R. B. Langdon
Dan Colburn	Wm. Kroning	Mrs. E. Biederman
C. W. Colburn	John Zopfi, Jr.	Harry Harder
John Odenbreit	Carl Schimmelpfennig	Henry Welzin
Henry Schwappach	Thos. Aubart	August Bohn
Balz Zopfi	Louis Hannes	

(names to the best of my ability)

**Elmer Weber**

**First Mayor of Maple Grove** by Daryl Weber  
part of article in Newsletter 25 SEPT 2004

The 1920's were a time when moonshine stills were operating throughout the country and the Osseo-Maple Grove area was no exception. Being in his teens and work being hard to find, Elmer took a job tending a still on a local Osseo farm.

The operation was set up by a local family who controlled the transportation network and had access to large amounts of sugar. The 300-gallon still was operated by no less than six individuals. Elmer being one of them. Federal agents were eventually led to the still through a number of tips. After a period of surveillance a raid was planned, but the operators were also tipped off before it happened.

Since the federal agents needed to shut down the still and take at least one operator into custody, Elmer was to face the charges alone. Since he was the only minor among the operators, it was felt that the courts would go easy on a juvenile. Newspaper clippings from the mid-twenties reported that he was arrested and was charged with possession of eighty-five gallons of moonshine, 2,000 gallons of mash and illegal distilling equipment.

Elmer pleaded guilty to the charges and was given a light sentence in the local workhouse. After numerous individuals testified on his behalf and promised to campaign on the judge's behalf prior to the fall elections, the judge suspended the sentence.



From Maple Grove Watchman Vol.3 No 3  
Nov 1965

Richard H. Reimer, age 43, lives on Route 2, Osseo. Occupation, Realtor-Builder.

1. Why are you seeking office and what qualifications do you have for this office?

It has been said that Maple Grove is the "Sleeping Giant" of Hennepin County, and I believe that this is why a sound and solid base must be laid in the formative years ahead. A strong and experienced leadership will be necessary, and I feel that I am qualified for this responsibility. We are on the threshold of greatly accelerated growth and will need thorough conscientious planning. If elected as your mayor, I would be bringing Maple Grove my background and experience through 12 years of assisting in the growth of several neighboring villages and have gone through and experienced many of the problems and pitfalls that we must also face



Village Council about 1960. (L to R)--Frend Wadsworth, Mayor Elmer Weber, George Pipenhagen, Treasurer; Alvin Schutte, Richard Gelle, Harter Kolseth.

**MAPLE GROVE BUDGET PLANS FOR 1966**

A special meeting of the Maple Grove council was held on September 30, 1965. Harter Kulseth, Dick Reimer, Gerri Fleming, Arnold Iverson and Mayor Elmer Weber were present.

**Maple Grove --The proposed 2021 General Fund budget totals \$42,898,000, population of 69,264 residents by April of 2021.**

Utilities, maintenance and repair .....	\$ 2,000.00
Police .....	16,295.00
Fire services .....	3,000.00
Inspections .....	2,800.00
Animal control .....	850.00
Weed control .....	400.00
Bond interest .....	1,160.00
Streets .....	46,000.00
Zoning and planning....	8,000.00
Council (wages and printing) .....	6,000.00
Election .....	800.00
Office expense .....	1,800.00
Treasurer's supplies ....	600.00
Assessor .....	4,000.00
Auditor .....	600.00
Attorney and legal .....	3,000.00
P.E.R.A. ....	3,500.00
Direct welfare .....	6,000.00

## Have you ever stopped to inquire how roadways get their names?

While many roads simply follow a predetermined numerical or alphabetical naming system, some names have special meaning. Nestled within the rolling hills and hardwood forests of Elm Creek Park Reserve in Maple Grove, you will find James Deane Parkway. James Deane was an influential voice in the development of Maple Grove and in the establishment of Elm Creek Park Reserve. The parkway that bears his name is a fitting tribute to a life of public service.

Born in the early 1930's, James Deane's family did not own a vehicle. Instead, Deane got around mainly by running. This passion for running led Deane to become a longtime track and cross-country coach at Osseo High School. Running was Deane's passion, which led him to be a lifelong advocate for recreation.

In the 1960's, James Deane became a member of the Maple Grove Park Board, eventually serving as its Chairman. In 1973, Deane was elected to serve on Maple Grove's City Council. It was during that time that the foundation was laid for the planning of Maple Grove's future. Still mostly farmland and "lake country" in the 1970's, Deane, along with others in Maple Grove leadership, created plans for the city that emphasized accessible parks for all, and a trail network that connected each new neighborhood. With Deane's vision, Maple Grove is now home to over 70,000 people and is the eighth largest city in Minnesota.

James Deane served as Maple Grove's mayor from 1981 to 1994. During that time, plans were underway for the new Highway 610, which would eventually connect the northern suburbs. Situated in the middle of the path for the new highway was an historic farmhouse which was once home to the notable Minnesota settler Pierre Bottineau. As mayor, Deane successfully moved the structure to a storage area, until it could be restored and a permanent location for it could be found.

Public service was James Deane's calling. Following his retirement from the Osseo School District, as well as from his duty as Maple Grove's mayor, he was elected to serve as a commissioner for the Three Rivers Park District, ultimately becoming the board chair. Deane was able to find a home for the newly restored Pierre Bottineau house within Elm Creek Park Reserve. Deane was also instrumental in removing admission fees from Three Rivers parks, opening up access to the parks for all people. To date, Three Rivers Park is one of the only regional park networks in the nation that provides free access to all.

James Deane passed away in 2015. Those that knew James Deane remember him as a thoughtful and compassionate man who naturally led with integrity. He was

not a politician, but rather a citizen leader whose only goal was to make his community a better place, and to preserve a piece of the past. You can pay homage to James Deane by driving, hiking, or cross-country skiing along his beautiful parkway on your next visit to Elm Creek Park Reserve.

Joe Hogeboom <jhogeboom@maplegrovern.gov>

## "Mayor"



"Mayor" was what his poker friends called him. Jim's political career began serving on the Maple Grove Park Board with Lee Gresser. He had a strong belief in preserving the natural environment and wanted very few BIG signs in Maple Grove. This position was followed by several terms on the Maple Grove City Council.

His grass roots campaign had handmade signs and flyers. These were often delivered by the Cross Country team that he coached. The back of his truck would be filled with his "boys". Over spoonburgers the runners shared stories of the biggest dog in the world that tried to chase them down....but of course they were runners and could not be caught.

Eventually Jim decided to run for mayor. A call came where he was asked "You mean you will run if the current mayor does not run – right?? No, he said, I am running anyway. He won readily.

From this position he went on to serve on Three Rivers Park Board. He was chairman for many years, continuing his strong belief in preserving the natural environment of Parks.

By Joyce Deane Mrs. Mayor?

# Morsels from the Mayors

## Former Mayor Dick Reimer Reflects on Success

BY Rebecca Cooke

From the [January 2010 issue](https://maplegrovemag.com/article/dick-reimer/former-mayor-dick-reimer-reflects-success) <https://maplegrovemag.com/article/dick-reimer/former-mayor-dick-reimer-reflects-success>.

"In 1965, yards were littered with little yellow signs: "Elect Reimer for Mayor." The race declared Reimer the winner by just 13 votes.

I am Maple Grove. "This city has a lot of great qualities, but I think my favorite aspect of Maple Grove is a combination of the people and the amazing parks and trails."

BY Louis Hennessy

From the [November 2015 Maple Grove Magazine issue](#)

<https://ccxmedia.org/news/longtime-maple-grove-public-servant-bob-burlingame-dies/>

**Bob Burlingame served Maple Grove for more than 40 years**

Burlingame also helped host the annual Maple Grove Days parade every summer.

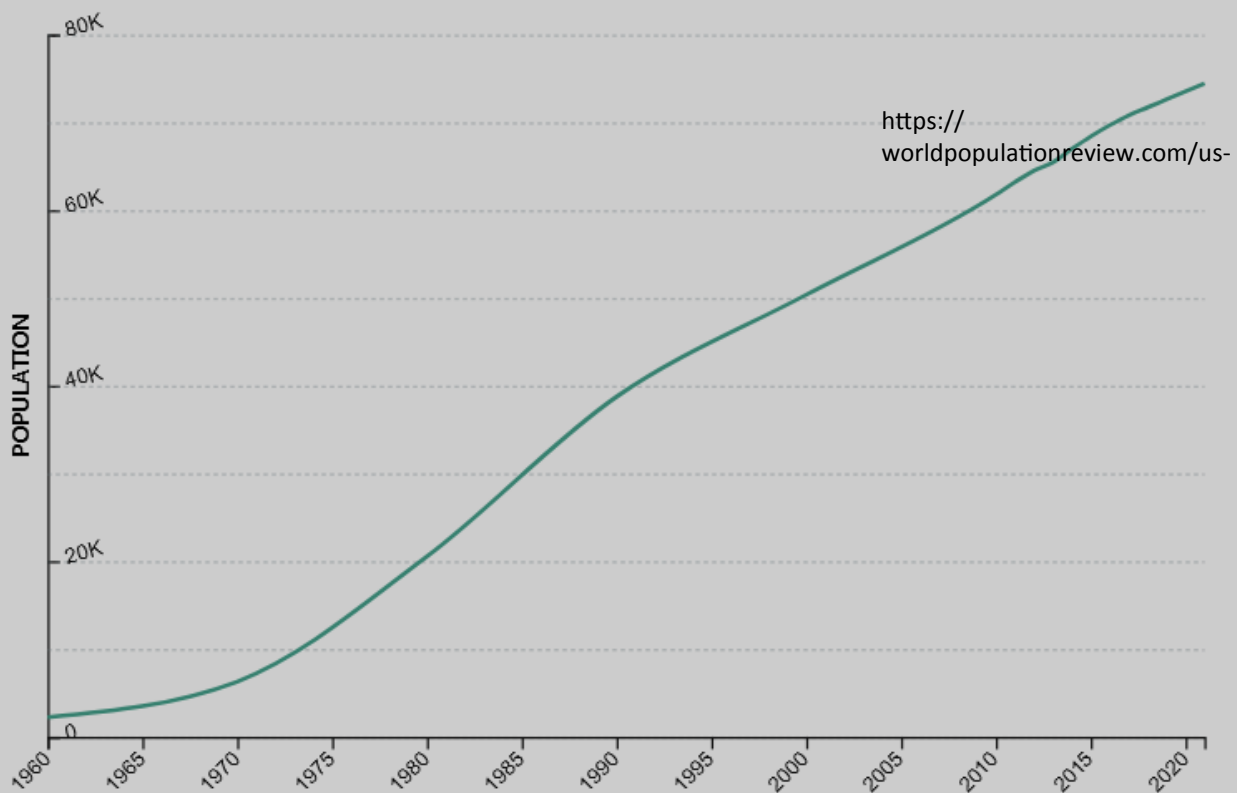
Burlingame has enjoyed his continuing connection to Maple Grove by announcing the Maple Grove Days Parade from 2002 to 2014. His vast contributions to the city and his knowledge of the city's history have made this a fun event for him.

As of July 2021, Mark Steffenson has served as the mayor of Maple Grove for 20 years. CCX Media's Dave Kiser sits down with the mayor for a short conversation to look back over the years of service and look ahead to the future of the city.

<https://ccxmedia.org/cities/highlighting-a-milestone-of-service-maple-grove-mayor-mark-steffenson/>

## Maple Grove, Minnesota Population 2021

# 74,444



Is Grandma coming for the Holidays?



Council person Karen Jaeger congratulating Mayor Burlingame on his retirement day in 2001.

**“Be Careful What You Wish For!”**

Joyce and Harlan Meyer have been my friends for many, many years. Sadly, Harlan passed away a few years ago. Joyce Meyer and I went through Parochial Grade School together, as well as Junior High and High School.

At a recent Grade School reunion Joyce shared a memory from when she and Harlan lived in Maple Grove a long time ago. They lived on Eagle Lake for over 25 years. This was before Maple Grove began expanding and before they moved to a farm in Nowthen, Minnesota.

One evening the Meyers attended a Maple Grove City Council Meeting. They had a suggestion on how Maple Grove might accelerate its growth. They said, “What Maple Grove needs is a restaurant”! Clearly, the Meyers were forward thinkers. Whoever would’ve dreamed back in the old days of Maple Grove that the city would have so many fine dining establishments today?

This might very well come under the broad heading of “be careful what you wish for!! By Jim Sable

**HOW DO YOU REMEMBER MAPLE GROVE?**



**HOW WILL MAPLE GROVE REMEMBER YOU?**

We need to raise \$500,000 to expand our museum to display our many artifacts and memorabilia. Please include the Maple Grove Historic Preservation Society in your estate plan, your generosity enriches the city of Maple Grove’s vibrancy, and history. Thank you for ensuring that we can bring people together and impact our community through telling our history for future generations..

**Create the future**

**You have the power to do great things!**

- ◆ ONE TIME DONATION \$ \_\_\_\_\_
- ◆ YEARLY DONATION \$ \_\_\_\_\_
- ◆ MEMORIAL OF A LOVED ONE \$ \_\_\_\_\_
- ◆ CHARITABLE GIFT TO REDUCE TAXABLE INCOME \$ \_\_\_\_\_
- ◆ BECOME A MEMBER \_\_ SINGLE \$15 \_\_ FAMILY \$30