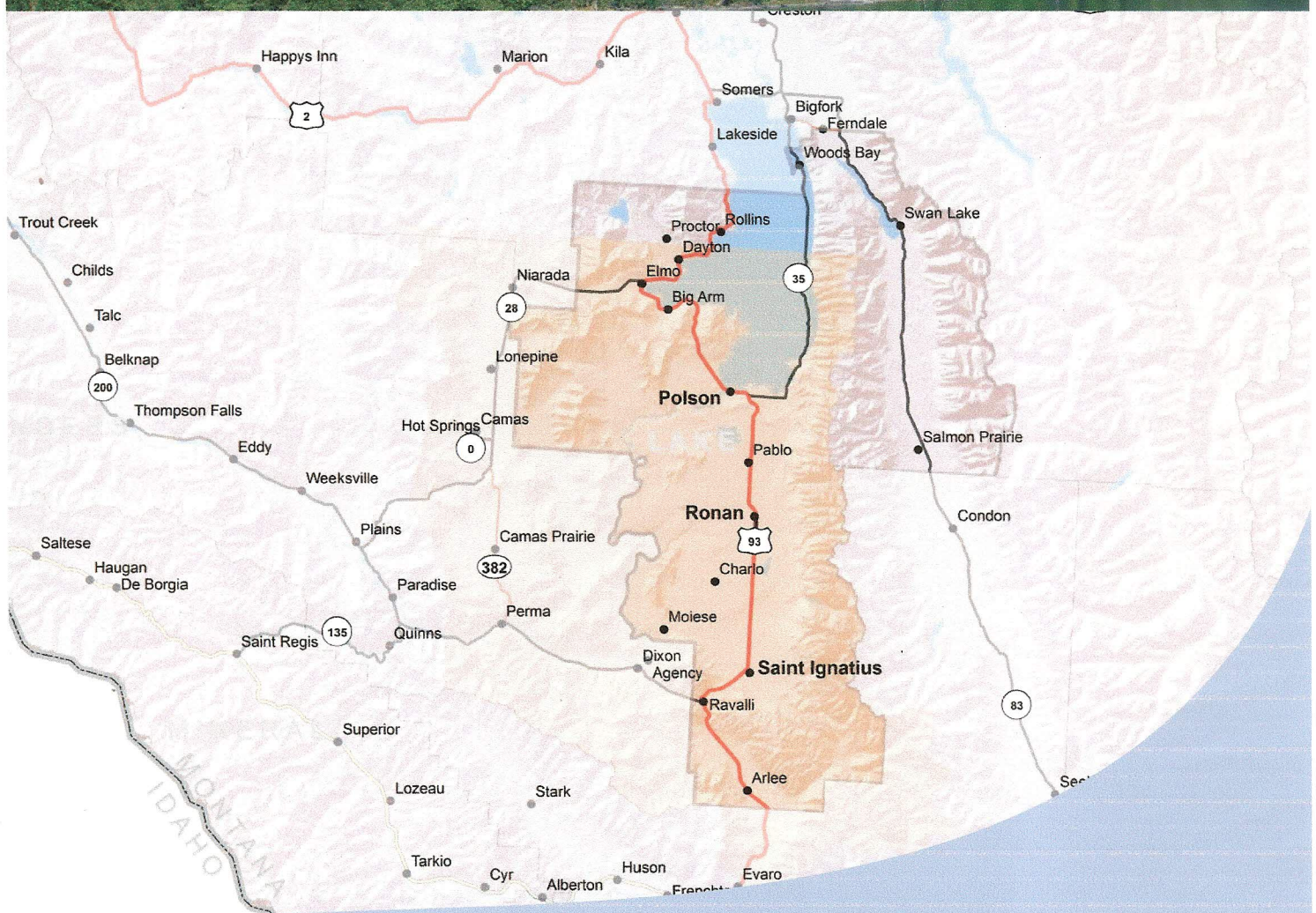


Pre-Disaster Mitigation Plan

Lake County, Montana



And the incorporated communities of Polson, Ronan and St. Ignatius.



TETRA TECH

AUGUST 2012

Ignatius, respectively. These dams are described in **Table 4.11-1**, below. No inundation areas would impact the City of Ronan.

Most of the dams in Lake County were constructed for irrigation purposes many years ago. The average age of the dams in Lake County is over 80 years. The flagship dam in Lake County is Kerr Dam, which controls the outflows of Flathead Lake. Ownership of the Kerr hydroelectric facility is PPL Montana. The Tribes are co-license holders with the utility on Kerr Dam with an option to assume operations of the dam in the year 2015.

According to the Lake County Growth Policy, the Bureau of Reclamation, in cooperation with the Tribes and the BIA, prioritized the dams on the Flathead Reservation based on risk. Excluding Kerr Dam, which is under the jurisdiction of Federal Energy Regulatory Commission and was not included in the risk analysis, the dams in the county are not considered to be "high risk." The Tribes have installed an early warning system at each dam, which is monitored remotely 24 hours a day. According to the PDM Planning Team, several dams in Lake County have restrictions because of maintenance issues. Pablo Dam was on the list for three years and Lower Crow Dam has a broken outtake works.

There is no record of failure of a high hazard dam in Lake County.

TABLE 4.11-1 HIGH HAZARD DAMS IN AND WITH THE POTENTIAL TO IMPACT LAKE COUNTY							
Dam Name	Drainage	Height (feet)	Maximum Storage (acre-ft)	Drainage Area (sq mi)	Year Completed	Purpose	Owner
Kerr	Flathead River	186	1,960,000	7,096	1939	Hydroelectric	PPL Montana & CSKT
Tabor	Dry Creek	53	23,300	12	1930	Irrigation	CSKT
Mission	Mission Creek	71	8,200	14	1935	Irrigation	CSKT
McDonald	Post Creek	40	8,220	21	1920	Irrigation	CSKT
Ninepipe	Dublin Gulch	38	15,150	8	1923	Irrigation	CSKT
Pablo	Pablo Canal	43	29,600	4	1914	Irrigation	CSKT
Lower Crow	Crow Creek	98	10,350	177	1933	Irrigation	CSKT
Kicking Horse	Dublin Gulch	27	8,350	2	1930	Irrigation	CSKT
Black Lake	Middle Fork Jocko River	60	5,200	4	1967	Irrigation	CSKT
Jocko	Middle Fork Jocko River	20	9,000	5	1937	Recreation	CSKT
Hubbart (Sanders County)	Little Bitterroot River	87	15,840	117	1923	Irrigation	CSKT
Lower Dry Fork (Sanders County)	Dry Fork Creek	26	4,270	19	1921	Irrigation	CSKT
Hungry Horse (Flathead County)	South Fork Flathead River	524	3,588,000	1,640	1953	Hydroelectric	DOI, BuRec

CSKT = Confederated Salish and Kootenai Tribe; DOI = U.S. Department of Interior; BuRec = Bureau of Reclamation