

# Future Professional Space In Georgetown For Lease

**JB**  
Realty & Development

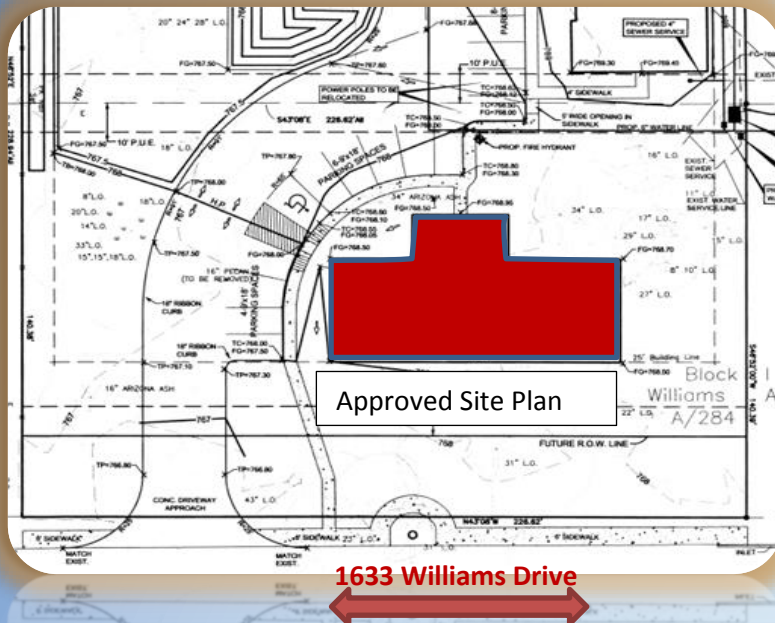


Proposed Elevation

**Available Space:**  
Approx. 3600 sq ft building  
Proposed for medical Use

**Location:**  
Easy access to IH35  
at 1633 Williams Drive

**Zoning:**  
Special Area Plan Overlay District  
SP allows for many professional  
Uses



**512.965.2035**

[jb@jbrealtyaustin.co](mailto:jb@jbrealtyaustin.co)

**Jim Bouton Broker**

All information regarding this property is from sources deemed reliable, however no independent investigation has been made of this information and no warranty or representation is made as to the accuracy thereof. This property is submitted subject to errors, omissions, change of price, withdrawal from the market, prior sale and/or other conditions. No warranties or representations are made as to any condition that may affect the value or suitability of the property and Buyer must independently verify same. All measurements, values and numbers are approximate and must be verified by Buyer prior to closing.