

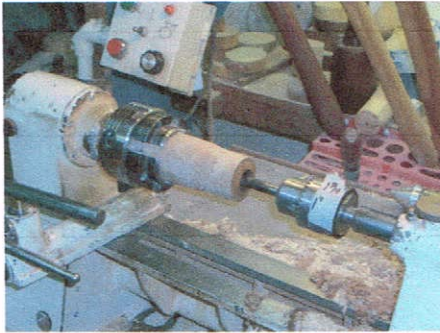
Turned Birdhouses

Tutorial by Glen Ploeckelmann
Photos and text by Lynn Edwards

Turning the bottom

For a Birdhouse the size in this article, start with a 2"-3" diameter blank mounted in a chuck. Bore a 1" hole about 1 3/4" deep.

Note: The hole in the bottom should be 1/8" smaller in diameter than the hole first bored in the roof



Rough turn the outside, Form the top so that it will fit in the shoulder of the 1 1/8" hole you bored in the roof. Support the turning with the tailstock.



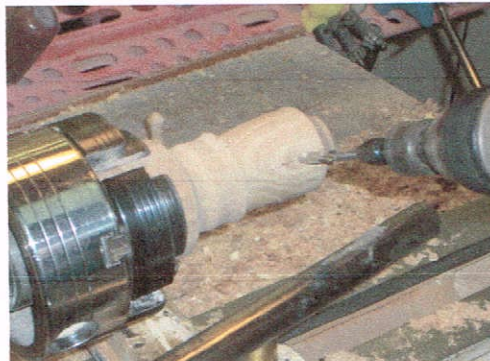
Fit the roof to the bottom.



Determine the location for the perch and entrance holes. This will be the front so try to find the best grain (the "face") or the most interesting features. The perch and entrance holes should be about 1/2" apart and the perch hole should be at least 1/4" from the bottom of the 1" hole.

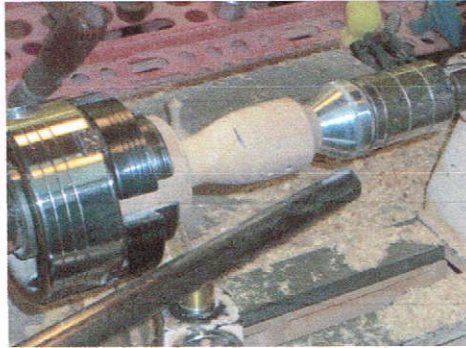


Drill the Entrance and perch holes. The Perch hole is 1/8" and the entrance hole is approximately 7/32". The perch hole should be directly under the entrance hole. The holes will be positioned more accurately if they are started with a hole made by an awl or center punch.



Hollow out the inside. Do not enlarge the first 1/8 to 3/16 of the bored hole. The walls should be 1/16"-1/8" thick. The hollowing should be just past the perch hole and leave about a 1/4" shoulder on the 1" bored hole. Mark the outside 1 3/4" (the bottom of the 1"

bored hole) so that when you finish turning the bottom, you won't have occasion to use four letter words like oops etc.

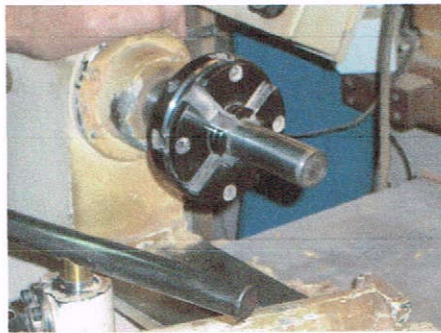


Once you have parted off the bottom, a short piece of 1/8" dowel is glued in the perch hole and you are done. Now is the time for finishing and gluing the roof to the bottom. For a nice touch, Craft Supplies has a number of birds from which to choose that can be mounted on the perch.

If however, you want to be a little more elaborate and do some extra stuff, you can reverse turn the bottom.

Reverse turning the bottom

Using a shop built 1" jam chuck, in this case a 1" steel rod mounted in a four jaw chuck.



Mount your work on the Jam chuck. This is why we left the hole in the top 1" and left a 1/4" shoulder on the bottom. You can now complete the bottom however you choose. In this case, the original blank was long enough to turn a base.



The last steps are finishing and assembling. This is a picture of the finished birdhouse.

