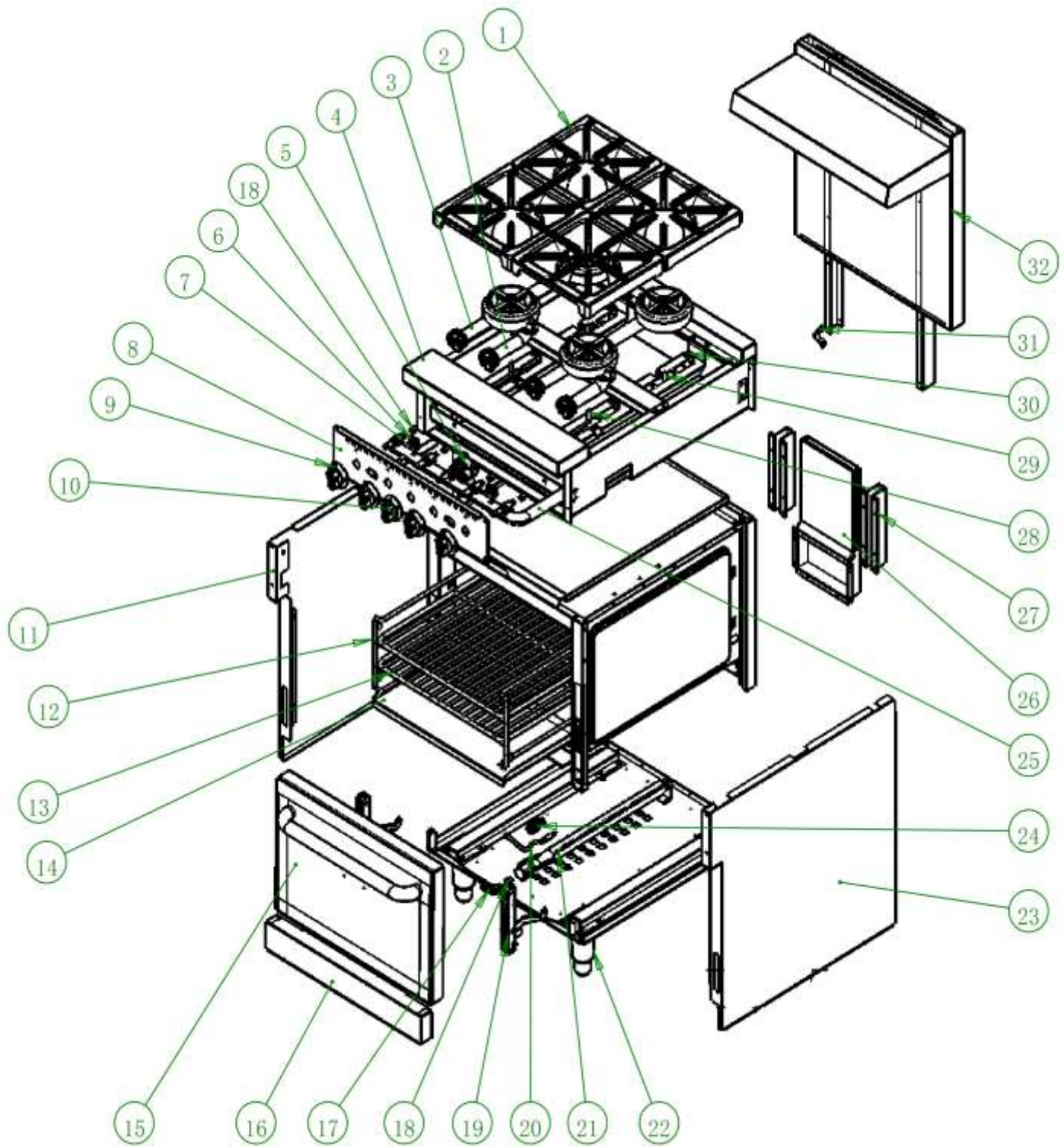




# **PARTS LIST FOR GAS RANGES**



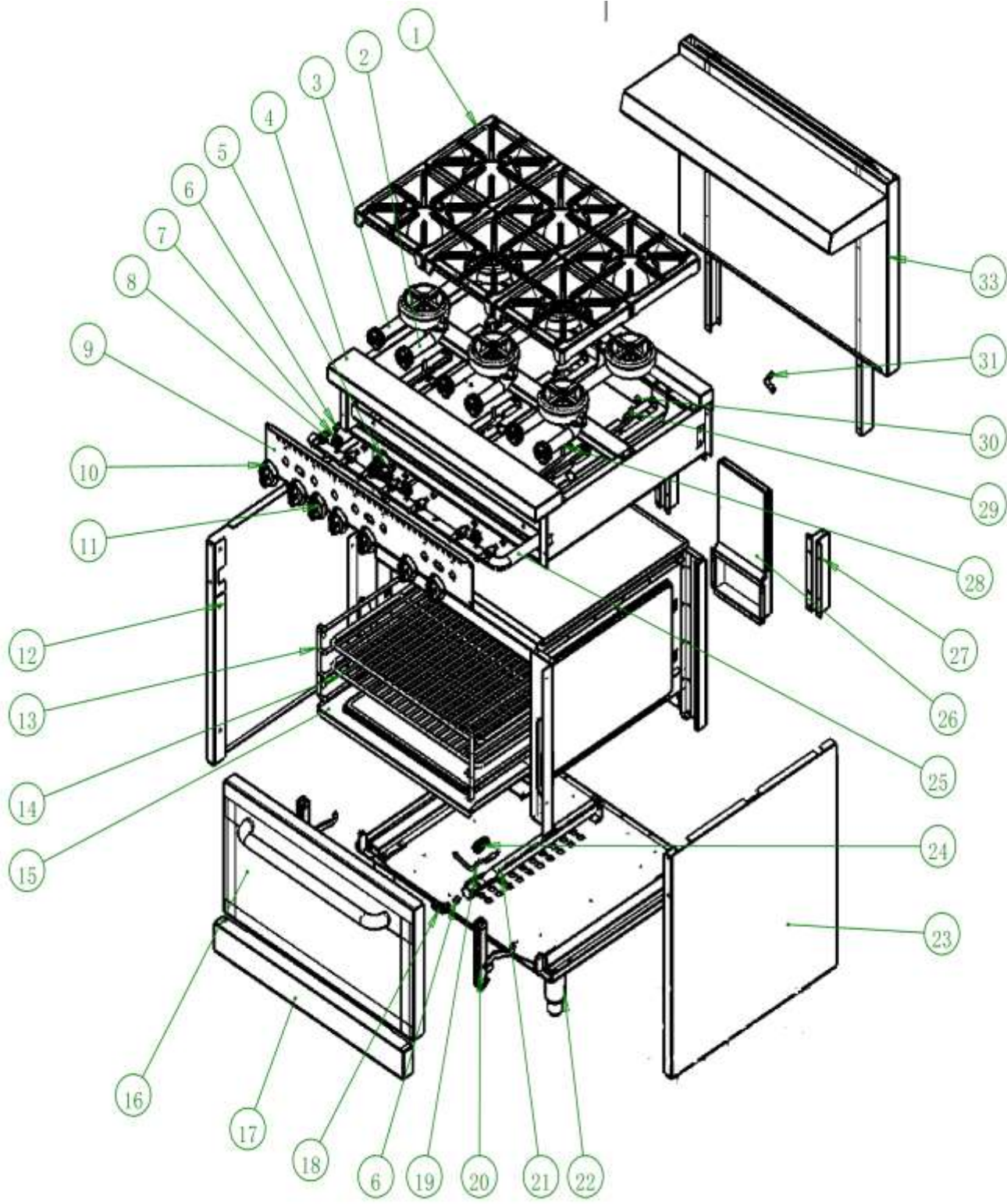
**MODELS R4, R6, R10**



### MODEL R4, 24" WIDE GAS RANGE

| REF # | PART #    | DESCRIPTION                             | QTY |
|-------|-----------|---|-----|
| 1     | GR10021   | BURNER GRATE                            | 4   |
| 2     | GR10032   | BURNER ASSEMBLY FRONT (SHORT)           | 2   |
| 3     | GR10031   | BURNER ASSEMBLY REAR (LONG)             | 2   |
| 4     | N/A       |   |     |
| 5     | GR10020   | OVEN THERMOSTATSAFETY VALVE             | 1   |
| 6     | GR10018   | PILOT ADJUSTMENT VALVE                  | 2   |
| 7     | GR10087   | TOP BURNER GAS VALVE (NAT)              | 4   |
|       | GR10082   | OVEN/TOP BURNER ORIFICE #36 DMS (NAT)   | 4   |
|       | GR10083   | OVEN/TOP BURNER ORIFICE #50 DMS (LP)    | *   |
| 8     | GR10073   | FRONT CONTROL PANEL                     | 1   |
| 9     | GR10069   | TOP BURNER GAS VALVE KNOB               | 4   |
| 10    | GR10070   | OVEN THERMOSTAT KNOB                    | 1   |
| 11    | N/A       |   |     |
| 12    | GR10005   | RACK SUPPORT LEFT/RIGHT                 | 2   |
| 13    | GR10004.5 | OVEN RACK                               | 2   |
| 14    | N/A       |   |     |
| 15    | GR10089   | OVEN DOOR ASSEMBLY                      | 1   |
| 16    | N/A       |   |     |
| 17    | GR10009   | ORIFICE ELBOW                           | 1   |
| 18    | GR10082   | OVEN ORIFICE #36 DMS (NAT)              | 1   |
|       | GR10084   | OVEN ORIFICE #51 DMS (LP)               | *   |
| 19    | GR10013   | DOOR HINGE ASSY (RIGHT)                 | 1   |
|       | GR10012   | DOOR HINGE ASSY (LEFT)                  | 1   |
| 20    | GR10075   | THERMOCOUPLE                            | 1   |
| 21    | GR10008   | OVEN TUBE BURNER                        | 1   |
| 22    | GR10003   | 6" ADJUSTABLE LEG (USED PRIOR TO 11/15) | 4   |
|       | GR1003.1  | 6" ADJUSTABLE LEG (USED AFTER 11/15)    | 4   |
|       | GR10085   | SWIVEL CASTER W/BRAKE (FRONT)           | *2* |
|       | GR10086   | SWIVEL CASTER W/O BRAKE (REAR)          | *2* |
| 23    | N/A       |   |     |
| 24    | GR10007   | OVEN PILOT (NAT)                        | 1   |
|       | GR10092   | OVEN PILOT (LP)                         | *   |
| 25    | N/A       |   |     |
| 26    | GR10028   | INNER FLUE ASSEMBLY                     | 1   |
| 27    | GR10066   | SLIDE RAIL (REAR BAFFLE)                | 2   |
| 28    | GR10034   | PILOT TUBING (SHORT BURNER)             | 2   |
| 29    | GR10035   | PILOT TUBING (LONG BURNER)              | 2   |
| 30    | GR10003   | TOP PILOT BUNER                         | 4   |
| 31    | GR10001   | MANIFOLD SUPPORT BRACKET                | 1   |
| 32    | GR10078   | BACK PANEL ASSEMBLY                     | 1   |
|       | GC10015   | GAS PRESSURE REG 3/4"NPT LP&NAT         | 1   |
|       | GR10080   | CRUMB TRAY                              | 1   |

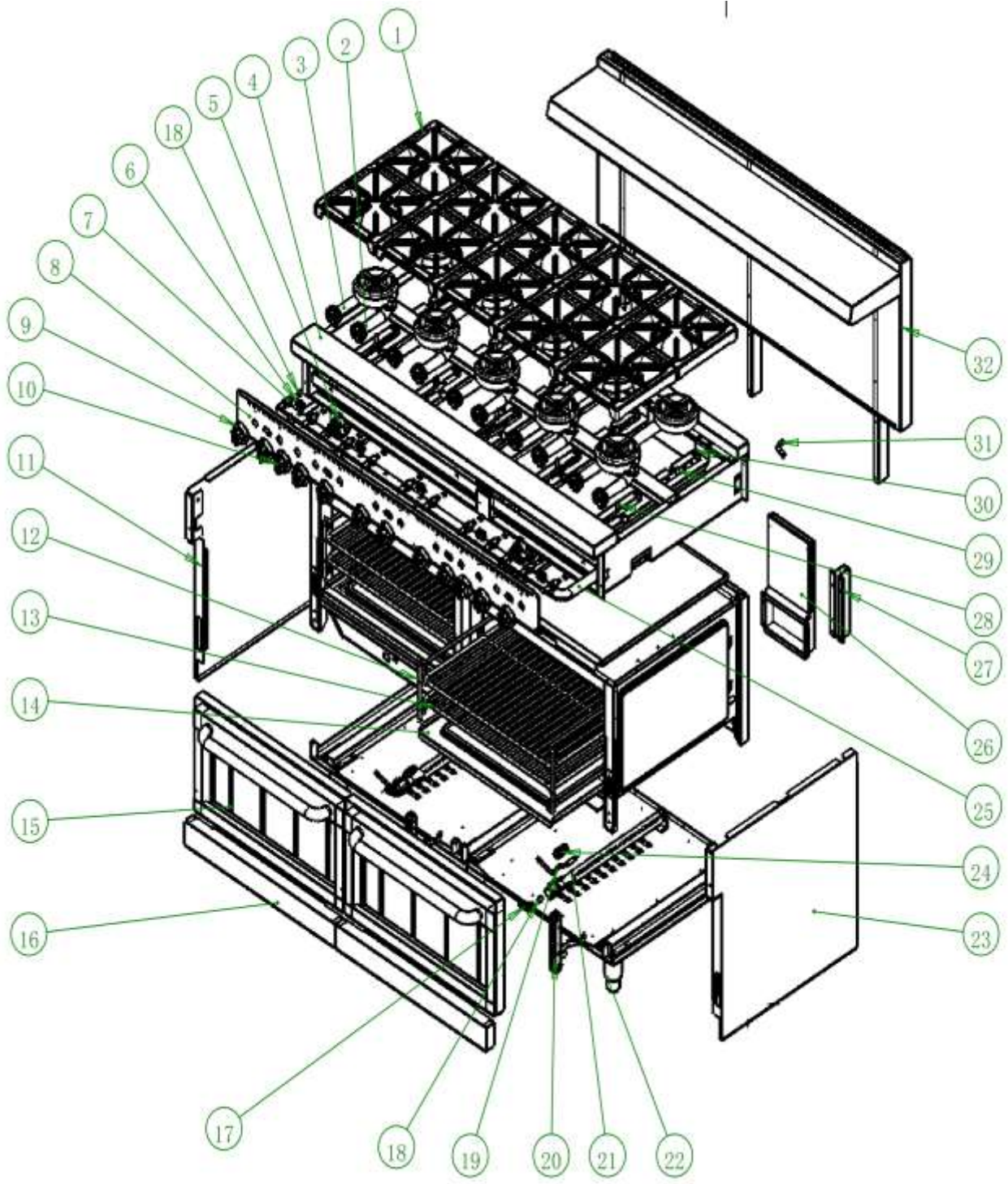
N/A - NOT AVAILABLE



## MODEL R6, 36" WIDE GAS RANGE

| REF # | PART #   | DESCRIPTION                             | QTY |
|-------|----------|---|-----|
| 1     | GR10021  | BURNER GRATE                            | 6   |
| 2     | GR10032  | BURNER ASSEMBLY FRONT (SHORT)           | 3   |
| 3     | GR10031  | BURNER ASSEMBLY REAR (LONG)             | 3   |
| 4     | GR10023  | FRAME ASSEMBLY                          | 1   |
| 5     | GR10020  | OVEN THERMOSTAT\SAFETY VALVE            | 1   |
| 6     | GR10082  | OVEN/TOP BURNER ORIFICE #36 DMS (NAT)   | 6   |
| 6     | GR10083  | OVEN/TOP BURNER ORIFICE #50 DMS (LP)    | *   |
| 7     | GR10018  | PILOT ADJUSTMENT VALVE                  | 3   |
| 8     | GR10087  | TOP BURNER GAS VALVE (NAT)              | 6   |
| 9     | GR10036  | FRONT CONTROL PANEL                     | 1   |
| 10    | GR10069  | TOP BURNER GAS VALVE KNOB               | 6   |
| 11    | GR10070  | OVEN THERMOSTAT KNOB                    | 1   |
| 12    | GR10056  | SIDE PANEL (LEFT)                       | 1   |
| 13    | GR10005  | RACK SUPPORT LEFT/RIGHT                 | 2   |
| 14    | GR10004  | OVEN RACK (25" X 24")                   | 2   |
| 15    | N/A      |   |     |
| 16    | GR10088  | DOOR ASSEMBLY                           | 1   |
| 17    | GR10091  | LOWER FRONT PANEL                       | 1   |
| 18    | GR10009  | ORIFICE ELBOW                           | 1   |
| 19    | GR10075  | THERMOCOUPLE                            | 1   |
| 20    | GR10013  | DOOR HINGE ASSY (RIGHT)                 | 1   |
| 20    | GR10012  | DOOR HINGE ASSY (LEFT)                  | 1   |
| 21    | GR10008  | OVEN TUBE BURNER                        | 1   |
| 21    | GR10082  | OVEN ORIFICE #36 DMS (NAT)              | 1   |
| 21    | GR10084  | OVEN ORIFICE #51 DMS (LP)               | *   |
| 22    | GR10003  | 6" ADJUSTABLE LEG (USED PRIOR TO 11/15) | 4   |
|       | GR1003.1 | 6" ADJUSTABLE LEG (USED AFTER 11/15)    | 4   |
| 22    | GR10085  | SWIVEL CASTER W/BRAKE (FRONT)           | *2* |
| 22    | GR10086  | SWIVEL CASTER W/O BRAKE (REAR)          | *2* |
| 23    | GR10055  | SIDE PANEL (HOUSING)(RIGHT)             | 1   |
| 24    | GR10007  | OVEN PILOT (NAT)                        | 1   |
| 24    | GR10092  | OVEN PILOT (LP)                         | *   |
| 25    | GR10011  | GAS INLET PIPE ASSEMBLY                 | 1   |
| 26    | GR10028  | INNER FLUE ASSEMBLY                     | 1   |
| 27    | GR10066  | SLIDE RAIL (REAR BAFFLE)                | 2   |
| 28    | GR10034  | PILOT TUBING (SHORT BURNER)             | 3   |
| 29    | GR10035  | PILOT TUBING (LONG BURNER)              | 3   |
| 30    | GR10003  | TOP PILOT BUNER                         | 6   |
| 31    | GR10001  | MANIFOLD SUPPORT BRACKET                | 1   |
| 33    | GR10027  | BACK PANEL ASSEMBLY                     | 1   |
|       | GC10015  | GAS PRESSURE REG 3/4"NPT LP&NAT         | 1   |
|       | GR10024  | CRUMB TRAY                              | 1   |

N/A - NOT AVAILABLE



## MODEL R10, 60" WIDE GAS RANGE

| REF # | PART #         | DESCRIPTION                           | QTY |
|-------|----------------|---------------------------------------|-----|
| 1     | GR10021        | BURNER GRATE                          | 10  |
| 2     | GR10032        | BURNER ASSEMBLY FRONT (SHORT)         | 5   |
| 3     | GR10031        | BURNER ASSEMBLY REAR (LONG)           | 5   |
| 4     | N/A            |                                       |     |
| 5     | GR10020        | OVEN THERMOSTATSAFETY VALVE           | 2   |
| 6     | GR10018        | PILOT ADJUSTMENT VALVE                | 5   |
| 7     | GR10087        | TOP BURNER GAS VALVE (NAT)            | 10  |
|       | GR10082        | TOP/OVEN ORIFICE #36 DMS (NAT)        | *   |
|       | GR10083        | TOP BURNER ORIFICE #50 DMS (LP)       | *   |
| 8     | GR10074        | FRONT CONTROL PANEL (R10)             | 1   |
| 9     | GR10069        | TOP BURNER GAS VALVE KNOB             | 10  |
| 10    | GR10070        | OVEN THERMOSTAT KNOB                  | 2   |
| 11    | N/A            | SIDE PANEL (Left)                     | 1   |
| 12    | GR10005        | RACK SUPPORT LEFT/RIGHT               | 4   |
| 13    | GR10004        | OVEN RACK (25" X 24")                 | 4   |
| 14    | GR10072        | BASEBOARD (CHAMBER)                   | 2   |
| 15    | GR10090        | DOOR ASSEMBLY                         | 2   |
| 16    | GR10093        | LOWER FRONT PANEL (R10)               | 2   |
| 17    | GR10009        | ORIFICE ELBOW                         | 2   |
| 18    | GR10082        | TOP/OVEN ORIFICE #36 DMS (NAT)        | 2   |
| 18    | GR10084        | OVEN ORIFICE #51 DMS (LP)             | *   |
| 19    | GR10075        | THERMOCOUPLE                          | 2   |
| 20    | GR10013        | DOOR HINGE ASSY (RIGHT)               | 2   |
| 20    | GR10012        | DOOR HINGE ASSY (LEFT)                | 2   |
| 21    | GR10008        | OVEN TUBE BURNER                      | 2   |
|       | GR10082        | TOP/OVEN ORIFICE #36 DMS (NAT)        | 2   |
|       | GR10084        | OVEN ORIFICE #51 DMS (LP)             | *   |
| 22    | GR10003        | 6" ADJUSTABLE LEG (USED PRIOR TO 11/1 | 6   |
|       | GR10003.1      | 6" ADJUSTABLE LEG (USED APFER TO 11/  | 6   |
| 22    | GR10085        | SWIVEL CASTER W/BRAKE (FRONT)         | *2* |
| 22    | GR10086        | SWIVEL CASTER W/O BRAKE (REAR)        | *2* |
| 23    | N/A            | SIDE PANEL(Right)                     | 1   |
| 24    | GR10007        | OVEN PILOT (NAT)                      | 1   |
| 24    | GR10092        | OVEN PILOT (LP)                       | *   |
| 25    | N/A            | GAS INLET PIPE ASSEMBLY               | 1   |
| 26    | GR10028        | INNER FLUE ASSEMBLY                   | 2   |
| 27    | GR10066        | SLIDE RAIL (REAR BAFFLE)              | 2   |
| 28    | GR10034        | PILOT TUBING (SHORT BURNER)           | 5   |
| 29    | GR10035        | PILOT TUBING (LONG BURNER)            | 5   |
| 30    | GR10003        | TOP PILOT BUNER                       | 10  |
| 31    | GR10001        | MANIFOLD SUPPORT BRACKET              | 1   |
| 32    | GR10079        | FRONT PANEL (BACK) - HIGH SHELF 60"   | 1   |
|       | <b>GC10015</b> | GAS PRESSURE REG 3/4"NPT LP&NAT       | 1   |
|       | GR10094        | CRUMB TRAY LEFT                       | 1   |
|       | GR10080        | CRUMB TRAY RIGHT                      | 1   |

N/A - NOT AVAILABLE



Entrée Service Department Contact info:

John Spock

914 Belair Drive

Berwick PA 18603

1-570-752-4602

Email: [john@entree.biz](mailto:john@entree.biz)

Website: <http://www.entree.biz>

For non-Warranty Parts please call our Parts Distributor,



WHALEY PARTS & SUPPLY

137 Cedar Road

Lexington SC 29073

1-855-394-8933

7 AM to 8 PM EST

<http://www.whaleyfoodservice.com/>

email: [entreparts@whaleyparts.com](mailto:entreparts@whaleyparts.com)