

05 12 Structural Steel Framing

05 12 23.20 Curb Edging		Crew	Daily Output	Labor Hours	Unit	Material	2007 Bare Costs		Total	Total Ind Cost
							Labor	Equipment		
1050	Steel channels with anchors, on forms, 3" channel, 5#/L.F.	E-4	290	110	L.F.	6.90	4.62	.40	11.92	16.75
1100	4" channel, 5.4#/L.F.		270	119		7.40	4.96	.43	12.79	17.50
1200	6" channel, 8.2#/L.F.		255	125		11.35	5.25	.45	17.05	23.30
1300	8" channel, 11.5#/L.F.		225	142		15.45	5.95	.51	21.91	28.30
1400	10" channel, 15.3#/L.F.		180	178		20	7.45	.64	28.09	36.50
1500	12" channel, 20.7#/L.F.		140	229		26.50	9.55	.82	36.87	48.50
2000	For curved edging, add					35%	10%			
9000	Minimum labor/equipment charge	E-4	4	8	Job		335	29	364	660

05 12 23.40 Lightweight Framing

05 12 23.40 LIGHTWEIGHT FRAMING		ROS1223-35								
0200 For load-bearing steel studs see division 05 41 13.30										
0400 Angle framing, field fabricated, 4" and larger		ROS1223-45		E-3						
0450	Less than 4" angles									
0460	1/2" x 1/2" x 1/8"		200	120	L.F.	.12	5.05	.58	5.75	10.25
0462	3/4" x 3/4" x 1/8"		160	150		.34	6.30	.72	7.36	13
0464	1" x 1" x 1/8"		135	178		.49	7.45	.85	8.79	15.55
0466	1-1/4" x 1-1/4" x 3/16"		115	209		.91	8.75	1	10.66	18.60
0468	1-1/2" x 1-1/2" x 3/16"		100	240		1.11	10.10	1.15	12.36	21.50
0470	2" x 2" x 1/4"		90	267		1.96	11.20	1.28	14.44	24.50
0472	2-1/2" x 2-1/2" x 1/4"		72	333		2.52	14	1.60	18.12	31.50
0474	3" x 3" x 3/8"		65	369		3.63	15.50	1.77	20.90	35
0476	3" x 3" x 3/8"		57	421		4.43	17.70	2.02	24.15	40.50
0600	Channel framing, field fabricated, 8" and larger		500	048	Lb.	.62	2.02	.23	2.87	4.51
0650	Less than 8" channels		335	072	"	.62	3.01	.34	3.97	6.70
0660	C2 x 1.78		115	209	L.F.	1.09	8.75	1	10.84	18.90
0662	C3 x 4.1		80	300		2.52	12.60	1.44	16.56	28
0664	C4 x 5.4		66	364		3.32	15.30	1.75	20.37	34.50
0666	C5 x 6.7		57	421		4.12	17.70	2.02	23.84	40.50
0668	C6 x 8.2		55	436		4.87	18.35	2.09	25.31	42
0670	C7 x 9.8		40	600		6.05	25	2.88	33.93	57.50
0672	C8 x 11.5		36	667		7.05	28	3.20	38.25	64
0710	Structural bar tee, field fabricated, 3/4" x 3/4" x 1/8"		160	150		.34	6.30	.72	7.36	13
0712	1" x 1" x 1/8"		135	178		.49	7.45	.85	8.79	15.55
0714	1-1/2" x 1-1/2" x 1/4"		114	211		1.44	8.85	1.01	11.30	19.50
0716	2" x 2" x 1/4"		89	270		1.96	11.35	1.29	14.60	25
0718	2-1/2" x 2-1/2" x 3/8"		72	333		3.63	14	1.60	19.23	32.50
0720	3" x 3" x 3/8"		57	421		4.43	17.70	2.02	24.15	40.50
0730	Structural zee, field fabricated, 1-1/4" x 1-3/4" x 1-3/4"		114	211		.47	8.85	1.01	10.33	18.25
0732	2-11/16" x 3" x 2-11/16"		114	211		1.09	8.85	1.01	10.95	18.50
0734	3-1/16" x 4" x 3-1/16"		133	180		1.65	7.60	.87	10.12	17
0736	3-1/4" x 5" x 3-1/4"		133	180		2.26	7.60	.87	10.73	17.50
0738	3-1/2" x 6" x 3-1/2"		160	150		3.40	6.30	.72	10.42	16.50
0740	Junior beam, field fabricated, 3"		80	300		3.51	12.60	1.44	17.55	29
0742	4"		72	333		4.74	14	1.60	20.34	33.50
0744	5"		67	358		6.15	15.05	1.72	22.92	37.50
0746	6"		62	387		7.70	16.25	1.86	25.81	41
0748	7"		57	421		9.40	17.70	2.02	29.12	46
0750	8"		53	453		11.30	19.05	2.17	32.52	51
1000	Continuous slotted channel framing system, shop fab, min	2 Swk	2400	.007	Lb.	3.18	.28		3.46	4.50
1200	Maximum		1600	.010		3.59	.41		4	5.50
1250	Plate & bar stock for reinforcing beams and trusses					1.13			1.13	1.50
1300	Cross bracing, rods, shop fabricated, 3/4" diameter	E-3	700	.034		1.23	1.44	.16	2.83	4.50

05 15
1310
1320
1330
1350
1380
1400
1420
1500
1520
9000
05 1
0010
0020
0100
0200
0300
0500
0700
0900
0950
1000
2000
2100
2500
2600
2700
2800
2900
9000
05 1
0010
0020
0400
0600
05
0010
0015
0020
0050
0100
0300
0400
0450
0500
200
210
05
001
002
010
020

05 12 Structural Steel Framing

Structural Steel for Buildings

05 12 23.40 Lightweight Framing		Crew	Daily Output	Labor Hours	Unit	Material	2007 Bare Costs		Total	Total Ind O&P
							Labor	Equipment		
1310	7/8" diameter	E3	850	.028	Lb.	1.23	1.19	.14	2.56	3.73
1320	1" diameter		1000	.024		1.23	1.01	.12	2.36	3.38
1330	Angle, 5" x 5" x 3/8"		2800	.009		1.23	.36	.04	1.63	2.08
1350	Hanging lintels, shop fabricated, average		850	.028		1.23	1.19	.14	2.56	3.73
1380	Roof frames, shop fabricated, 3'-0" square, 5' span	E2	4200	.013		1.23	.54	.37	2.14	2.73
1400	Tie rod, not upset, 1-1/2" to 4" diameter, with turnbuckle	2 Sswk	800	.020		1.33	.83		2.16	3.03
1420	No turnbuckle		700	.023		1.28	.95		2.23	3.19
1500	Upset, 1-3/4" to 4" diameter, with turnbuckle		800	.020		1.33	.83		2.16	3.03
1520	No turnbuckle		700	.023		1.28	.95		2.23	3.19
9000	Minimum labor/equipment charge		2	8	Job		330		330	620

05 12 23.45 Lintels

05 12 23.45 Lintels		Crew	Daily Output	Labor Hours	Unit	Material	2007 Bare Costs	Total	Total Ind O&P	
							Labor	Equipment		
0010	LINTELS									
0020	Plain steel angles, under 500 lb.	1 Bric	550	.015	Lb.	.79	.55		1.34	1.77
0100	500 to 1000 lb.		640	.013		.77	.48		1.25	1.62
0200	1,000 to 2,000 lb.		640	.013		.75	.48		1.23	1.59
0300	2,000 to 4,000 lb.		640	.013		.73	.48		1.21	1.57
0500	For built-up angles and plates, add to above					.26			.26	.28
0700	For engineering, add to above					.10			.10	.11
0900	For galvanizing, add to above, under 500 lb.					.33			.33	.36
0950	500 to 2,000 lb.					.30			.30	.33
1000	Over 2,000 lb.					.25			.25	.27
2000	Steel angles, 3-1/2" x 3", 1/4" thick, 2'-6" long	1 Bric	47	.170	Co.	11.05	6.50		17.55	22.50
2100	4'-6" long		26	.308		19.95	11.70		31.65	41
2500	3-1/2" x 3-1/2" x 5/16", 5'-0" long		18	.444		29.50	16.90		46.40	60
2600	4" x 3-1/2", 1/4" thick, 5'-0" long		21	.381		25.50	14.50		40	51.50
2700	9'-0" long		12	.667		46	25.50		71.50	91.50
2800	4" x 3-1/2" x 5/16", 7'-0" long		12	.667		44	25.50		69.50	89.50
2900	5" x 3-1/2" x 5/16", 10'-0" long		8	1		71.50	38		109.50	140
9000	Minimum labor/equipment charge		4	2	Job		76		76	123

05 12 23.60 Pipe Support Framing

05 12 23.60 Pipe Support Framing		Crew	Daily Output	Labor Hours	Unit	Material	2007 Bare Costs	Total	Total Ind O&P	
							Labor	Equipment		
0010	PIPE SUPPORT FRAMING									
0020	Under 10#/L.F.	E4	3900	.008	Lb.	1.37	.34	.03	1.74	2.19
0200	10.1 to 15#/L.F.		4300	.007		1.35	.31	.03	1.69	2.11
0400	15.1 to 20#/L.F.		4800	.007		1.33	.28	.02	1.63	2.03
0600	Over 20#/L.F.		5400	.006		1.31	.25	.02	1.58	1.93

05 12 23.65 Plates

05 12 23.65 Plates		Crew	Daily Output	Labor Hours	Unit	Material	2007 Bare Costs	Total	Total Ind O&P	
							Labor	Equipment		
0010	PLATES									
0015	Made from recycled materials									
0020	For connections & stiffener plates, shop fabricated									
0050	1/8" thick (5.1 lb./S.F.)				S.F.	5.25			5.25	5.75
0100	1/4" thick (10.2 lb./S.F.)					10.45			10.45	11.50
0300	3/8" thick (15.3 lb./S.F.)					15.70			15.70	17.25
0400	1/2" thick (20.4 lb./S.F.)					21			21	23
0450	3/4" thick (30.6 lb./S.F.)					31.50			31.50	34.50
0500	1" thick (40.8 lb./S.F.)					42			42	46
2000	Steel plate, warehouse prices, no fabrication									
2100	1/4" thick (10.2 lb./S.F.)				S.F.	4.49			4.49	4.94

05 12 23.70 Stressed Skin Roof and Ceiling System

05 12 23.70 Stressed Skin Roof and Ceiling System		Crew	Daily Output	Labor Hours	Unit	Material	2007 Bare Costs	Total	Total Ind O&P	
							Labor	Equipment		
0010	STRESSED SKIN ROOF & CEILING SYSTEM									
0020	Double panel flat roof, spans to 100'	E2	1150	.049	S.F.	8.20	1.97	1.35	11.52	14
0100	Double panel convex roof, spans to 200'		960	.058		13.35	2.35	1.61	17.31	20.50
0200	Double panel arched roof, spans to 300'		760	.074		20.50	2.97	2.04	25.51	30

05 12 Structural Steel Framing

Structural Steel Buildings

05 12 23.75 Structural Steel Members

		Crew	Daily Output	Labor-Hours	Unit	Material	2007 Base Costs		Total	Total Incl O&P
							Labor	Equipment		
0010	STRUCTURAL STEEL MEMBERS									
0020	Shop job'd for 100-ton, 1-2 story project, bolted conn's.									
0102	W 6 x 9									
0302	W 8 x 10									
0502	x 31									
0702	W 10 x 22									
0902	x 49									
1102	W 12 x 14									
1302	x 22									
1502	x 26									
1702	x 72									
1902	W 14 x 26									
2102	x 30									
2302	x 34									
2502	x 120									
2702	W 16 x 26									
2902	x 31									
3102	x 40									
3302	W 18 x 35									
3502	x 40									
3702	x 50									
3902	x 55									
4102	W 21 x 44									
4302	x 50									
4502	x 62									
4702	x 68									
4902	W 24 x 55									
5102	x 62									
5302	x 68									
5502	x 76									
5702	x 84									
5902	W 27 x 94									
6102	W 30 x 99									
6302	x 108									
6502	x 116									
6702	W 33 x 118									
6902	x 130									
7102	x 141									
7302	W 36 x 135									
7502	x 150									
7702	x 194									
7902	x 230									
8102	x 300									
8490	For projects 75 to 99 tons, add					10%				
8492	50 to 74 tons, add					20%				
8494	25 to 49 tons, add					30%	10%			
8496	10 to 24 tons, add					50%	25%			
8498	2 to 9 tons, add					75%	50%			
8499	Less than 2 tons, add					100%	100%			
9000	Minimum labor/equipment charge	E-2	2	28	Job		1,125	775	1,900	2,875

05 12 23.77 Structural Steel Projects

0010	STRUCTURAL STEEL PROJECTS									

05
002
020
030
040
050
070
080
090
100
110
130
140
150
151
160
170
190
200
220
230
280
290
291
300
304
307
310
320
321
322
340
350
370
380
381
382
383
384
385
386
387
388
390
395
400
410
420
421
422
423
430
440
460

05 21 Steel Joist Framing

Open Web Steel Joist Framing

05 21 19.10 Open Web Joists

	Crew	Daily Output	Labor-Hours	Unit	Material	2007 Base Costs			Total	Total Incl O&P
						Labor	Equipment			
0640	E-7	2200	.036	LF.	9.65	1.49	.81	11.95	14.25	
0660		2400	.033		8.90	1.36	.74	11	13.10	
0680		2400	.033		11.95	1.36	.74	14.05	16.45	
0700		2400	.033		9.25	1.36	.74	11.35	13.45	
0720		2400	.033		12.30	1.36	.74	14.40	16.85	
1010	CS series, horizontal bridging									
1020	E-7	15	5.333	Ton	1,325	218	119	1,662	1,975	
1040		12	6.667		1,475	272	148	1,895	2,250	
1060		9	8.889		1,725	365	198	2,288	2,775	
1100		1200	.067	LF.	5.50	2.72	1.48	9.70	12.65	
1120		1500	.053		5.85	2.18	1.19	9.22	11.75	
1140		1500	.053		5.85	2.18	1.19	9.22	11.75	
1160		1800	.044		6.20	1.82	.99	9.01	11.25	
1180		1800	.044		10.60	1.82	.99	13.41	16.05	
1200		2000	.040		6.60	1.63	.89	9.12	11.20	
1220		2000	.040		10.95	1.63	.89	13.47	16	
1240		2000	.040		6.95	1.63	.89	9.47	11.60	
1260		2000	.040		12.05	1.63	.89	14.57	17.20	
1280		2000	.040		7.30	1.63	.89	9.82	12	
1300		2000	.040		12.05	1.63	.89	14.57	17.20	
1320		2200	.036		7.30	1.49	.81	9.60	11.65	
1340		2200	.036		12.05	1.49	.81	14.35	16.85	
1360		2200	.036		7.30	1.49	.81	9.60	11.65	
1380		2200	.036		12.05	1.49	.81	14.35	16.85	
1400		2400	.033		7.70	1.36	.74	9.80	11.75	
1420		2400	.033		12.05	1.36	.74	14.15	16.55	
1440		2400	.033		8.05	1.36	.74	10.15	12.15	
1460		2400	.033		12.05	1.36	.74	14.15	16.55	
6100	For less than 40-ton job lots									
6102	For 30 to 39 tons, add									
6104	20 to 29 tons, add									
6106	10 to 19 tons, add									
6107	5 to 9 tons, add									
6108	1 to 4 tons, add									
6109	Less than 1 ton, add									
6200	For shop prime paint other than mfrs. standard, add									
6300	For bottom chord extensions, add per chord									
6400	1 Bric	160	.050	"	6.15	1.90		8.05	9.85	

Steel Joist Girder Framing

05 21 23.50 Joist Girders

	Crew	Daily Output	Labor-Hours	Unit	Material	Labor	Equipment	Total	Total Incl O&P	
0010	JOIST GIRDERS									
7000	E-5	15	5.333	Ton	1,300	218	111	1,629	1,950	
7020		13	6.154		1,425	251	128	1,804	2,175	
7040		11	7.273		1,500	297	151	1,948	2,350	
8000		11	7.273		4,675	297	151	5,123	5,825	

05 31 Steel Decking

old
1089

25

13.16

16.16

15.16

16.16

375

250

775

12.45

11.25

11.25

11.25

16.35

11.20

16

11.40

17.20

12.35

17.20

11.45

16.35

11.45

16.85

11.75

16.55

11.75

16.55

11.75

16.55

11.75

16.55

11.75

16.55

11.75

16.55

11.75

16.55

11.75

16.55

11.75

16.55

11.75

16.55

11.75

16.55

11.75

16.55

11.75

16.55

11.75

16.55

11.75

16.55

11.75

16.55

11.75

16.55

11.75

16.55

11.75

16.55

11.75

05 31 13.50 Floor Decking

Code	Description	Crew	Daily Output	Labor-Hours	Unit	Material	2007 Labor	2007 Bare Costs Equipment	Total	Total Incl O&P
0010	FLOOR DECKING									
R053100-10										
3200	Open decking, 3" deep, 22 gauge, under 50 squares	E-4	3600	.009	S.E.	2.14	.37	.03	2.54	3.09
3300	20 gauge, under 50 squares		3400	.009		2.47	.39	.03	2.89	3.50
3400	18 gauge, under 50 squares		3200	.010		3.19	.42	.04	3.65	4.34
3500	16 gauge, under 50 squares		3000	.011		4.22	.45	.04	4.71	5.55
3700	4-1/2" deep, long span roof, over 50 squares, 20 gauge		2700	.012		3.97	.50	.04	4.51	5.35
3800	18 gauge		2460	.013		5.10	.54	.05	5.69	6.70
3900	16 gauge		2350	.014		3.82	.57	.05	4.44	5.30
4100	6" deep, long span, 18 gauge		2000	.016		7.30	.67	.06	8.03	9.35
4200	16 gauge		1930	.017		5.45	.69	.06	6.20	7.40
4300	14 gauge		1860	.017		7.05	.72	.06	7.83	9.15
4500	7-1/2" deep, long span, 18 gauge		1690	.019		8.05	.79	.07	8.91	10.40
4600	16 gauge		1590	.020		6	.84	.07	6.91	8.25
4700	14 gauge		1490	.021		7.75	.90	.08	8.73	10.30
4800	For painted instead of galvanized, deduct					2%				
5000	For acoustical perforated, with fiberglass, add				S.F.	1.05			1.05	1.16
5200	Non-cellular composite deck, galv., 2" deep, 22 gauge	E-4	3860	.008		1.47	.35	.03	1.85	2.30
5300	20 gauge		3600	.009		1.63	.37	.03	2.03	2.53
5400	18 gauge		3380	.009		2.07	.40	.03	2.50	3.06
5500	16 gauge		3200	.010		2.59	.42	.04	3.05	3.68
5700	3" deep, galv., 22 gauge		3200	.010		1.60	.42	.04	2.06	2.59
5800	20 gauge		3000	.011		1.79	.45	.04	2.28	2.85
5900	18 gauge		2850	.011		2.20	.47	.04	2.71	3.34
6000	16 gauge		2700	.012		2.94	.50	.04	3.48	4.21
9000	Minimum labor/equipment charge	1 Sswk	1	8	Job		330		330	620

05 31 23.50 Steel Roof Decking

Code	Description	Crew	Daily Output	Labor-Hours	Unit	Material	2007 Labor	2007 Bare Costs Equipment	Total	Total Incl O&P
0010	ROOF DECKING									
2100	Open type, galv., 1-1/2" deep wide rib, 22 gauge, under 50 squares	E-4	4500	.007	S.E.	1.55	.30	.03	1.88	2.29
2400	Over 500 squares		5100	.006		1.11	.26	.02	1.39	1.73
2600	20 gauge, under 50 squares		3865	.008		1.82	.35	.03	2.20	2.68
2700	Over 500 squares		4300	.007		1.31	.31	.03	1.65	2.06
2900	18 gauge, under 50 squares		3800	.008		2.36	.35	.03	2.74	3.28
3000	Over 500 squares		4300	.007		1.70	.31	.03	2.04	2.49
3050	16 gauge, under 50 squares		3700	.009		3.17	.36	.03	3.56	4.19
3100	Over 500 squares		4200	.008		2.28	.32	.03	2.63	3.14

05 31 33.50 Steel Form Decking

Code	Description	Crew	Daily Output	Labor-Hours	Unit	Material	2007 Labor	2007 Bare Costs Equipment	Total	Total Incl O&P
0010	FORM DECKING									
6100	Slab form, steel, 28 gauge, 9/16" deep, uncoated	E-4	4000	.008	S.F.	1.03	.33	.03	1.39	1.79
6200	Galvanized		4000	.008		.91	.33	.03	1.27	1.66
6220	24 gauge, 1" deep, uncoated		3900	.008		1.12	.34	.03	1.49	1.91
6240	Galvanized		3900	.008		1.32	.34	.03	1.69	2.13
6300	24 gauge, 1-5/16" deep, uncoated		3800	.008		1.20	.35	.03	1.58	2.01
6400	Galvanized		3800	.008		1.41	.35	.03	1.79	2.24
6500	22 gauge, 1-5/16" deep, uncoated		3700	.009		1.50	.36	.03	1.89	2.36
6600	Galvanized		3700	.009		1.53	.36	.03	1.92	2.39
6700	22 gauge, 2" deep uncoated		3600	.009		1.98	.37	.03	2.38	2.92
6800	Galvanized		3600	.009		1.94	.37	.03	2.34	2.87
7000	Sheet metal edge closure form, 12" wide with 2 bends, galv									
7100	18 gauge	E-14	360	.022	L.F.	3.19	.96	.32	4.47	5.65
7200	16 gauge	"	360	.022	"	4.33	.96	.32	5.61	6.90

32 06 Schedules for Exterior Improvements

Schedules for Sidewalks, Driveways and Paving

32 06 10.10 Sidewalks, Driveways and Patios		Crew	Daily Output	Labor-Hours	Unit	Material	2007 Base Costs		Total	Total incl. O&P
							Labor	Equipment		
2300	Tile inlaid pavers, 3/8" thick	B-1	300	.053	S.F.	3.18	1.78		4.96	6.40
2350	3/4" thick	"	280	.057	"	5.05	1.91		6.96	8.70
2400	Wood rounds, cypress	B-1	175	.137	Co.	9.55	4.03		13.58	17.20
9000	Minimum labor/equipment charge	B-1	2	8	Job		267		267	435

32 06 10.20 Steps		Crew	Daily Output	Labor-Hours	Unit	Material	2007 Base Costs		Total	Total incl. O&P
							Labor	Equipment		
0010	STEPS incl. excav., borrow & concrete base, where applicable									
0100	Brick steps	B-24	35	.686	LF Riser	11.15	23		34.15	50
0200	Railroad ties	2 Chb	25	.640	"	3.19	18.40		21.59	34
0300	Bluestone treads, 12" x 2" or 12" x 1-1/2"	B-24	30	.800	"	25.50	27		52.50	72
0490	Minimum labor/equipment charge	B-1	2	8	Job		267		267	435
0600	Precast concrete, see Division 03 41 23.50									
4000	Edging, redwood, 2" x 4"	2 Carp	330	.048	L.F.	2.07	1.78		3.85	5.2
4025	Steel edge strips, incl. stakes, 1/4" x 5"	B-1	390	.062	"	3.65	1.81		5.46	7
4050	Edging, landscape timber or railroad ties, 6" x 8"	2 Carp	170	.094	"	2.72	3.45		6.17	8.70

32 11 Base Courses

Aggregate Base Courses

32 11 23.23 Base Course Drainage Layers

32 11 23.23 Base Course Drainage Layers		Crew	Daily Output	Labor-Hours	Unit	Material	2007 Base Costs		Total	Total incl. O&P
							Labor	Equipment		
0010	BASE COURSE DRAINAGE LAYERS									
0050	Crushed 3/4" stone base, compacted, 3" deep	B-36C	5200	.008	S.Y.	3.09	.27	.56	3.92	4.44
0100	6" deep		5000	.008	"	6.20	.28	.58	7.06	7.90
0200	9" deep		4600	.009	"	9.30	.31	.63	10.24	11.40
0300	12" deep		4200	.010	"	12.40	.33	.69	13.42	14.95
0301	Crushed 1-1/2" stone base, compacted to 4" deep	B-36B	6000	.011	"	4.81	.36	.55	5.72	6.52
0302	6" deep		5400	.012	"	7.20	.40	.61	8.21	9.25
0303	8" deep		4500	.014	"	9.60	.48	.73	10.81	12.25
0304	12" deep		3800	.017	"	14.45	.57	.87	15.89	17.20
0310	Minimum labor/equipment charge	B-36	1	40	Job		1,325	1,225	2,550	3,380
0350	Bank run gravel, spread and compacted									
0370	6" deep	B-32	6000	.005	S.Y.	4.15	.19	.28	4.62	5.20
0390	9" deep		4900	.007	"	6.25	.24	.35	6.84	7.65
0400	12" deep		4200	.008	"	8.30	.27	.41	8.98	10.05
1500	Alternate method to figure base course									
1510	Crushed stone, 3/4", compacted, 3" deep	B-36C	435	.092	E.C.Y.	32	3.23	6.65	41.88	47.55
1511	6" deep	B-36B	835	.077	"	32	2.60	3.94	38.54	43.90
1512	9" deep		1150	.056	"	32	1.89	2.86	36.75	41.10
1513	12" deep		1400	.046	"	32	1.55	2.35	35.90	40.50
1520	Crushed stone, 1-1/2", compacted 4" deep		665	.096	"	32	3.27	4.94	40.21	45.90
1521	6" deep		900	.071	"	32	2.41	3.65	38.06	43
1522	8" deep		1000	.064	"	32	2.17	3.29	37.46	42
1523	12" deep		1265	.051	"	32	1.72	2.60	36.32	40.55
1530	Gravel, bank run, compacted, 6" deep	B-36C	835	.048	"	21.50	1.68	3.46	26.64	30
1531	9" deep		1150	.035	"	21.50	1.22	2.51	25.23	28
1532	12" deep		1400	.029	"	21.50	1	2.06	24.56	27.50
2010	Crushed stone, 3/4" maximum size, 3" deep	B-36	540	.074	Ton	19.20	2.45	2.28	23.93	27.50
2011	6" deep		1625	.025	"	19.20	.81	.74	20.77	23
2012	9" deep		1785	.022	"	19.20	.74	.69	20.63	23
2013	12" deep		1950	.021	"	19.20	.68	.63	20.51	23
2020	Crushed stone, 1-1/2" maximum size, 4" deep		720	.056	"	19.20	1.83	1.71	22.74	26
2021	6" deep		815	.049	"	19.20	1.62	1.51	22.33	25.50
2022	8" deep		835	.048	"	19.20	1.58	1.47	22.25	25.50

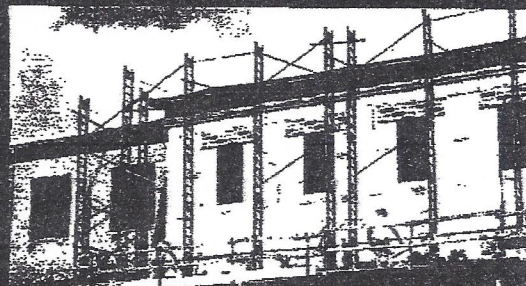
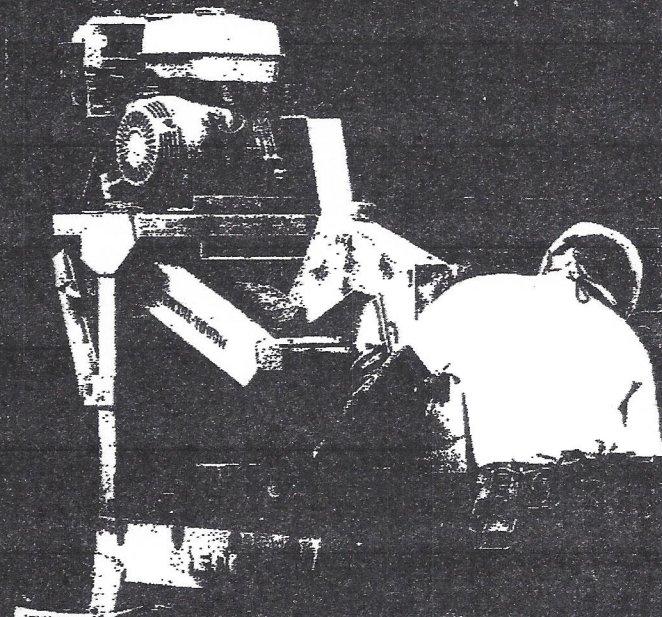
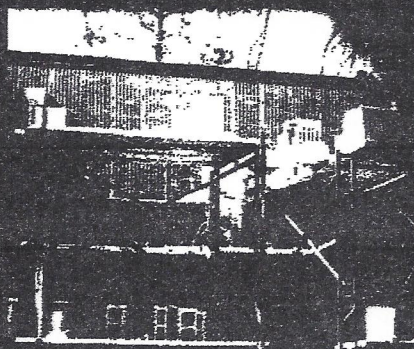
32
32 11 5
2023
2030
2031
2032
6000
6900
6990
7000
9000
9000
32 11 5
0010 P
0020
0500
0550
0560
0570
2000
2005
2006
2007
2008
8900
32 11 5
0010
0020
0700
0800
1800
1100
1200
8900
32
32 12
0010
0020
0025
0080
1720
1730
1760
0170
0200
0300
0340
0380
0420

RSMMeans

Concrete & Masonry Cost Data

25th Annual Edition

2007

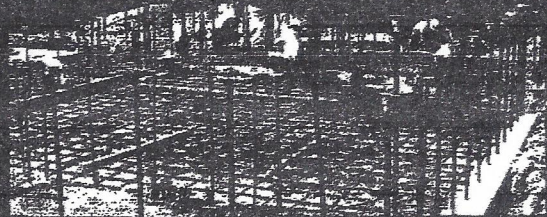


M
H
R

CUYAHOGA COUNTY PUBLIC LIBRARY



1221382177



03 30 Cast-In-Place Concrete

Normal Weight Cast-In-Place Concrete

Code	Description	Crew	Daily Output	Labor-Hours	Unit	Material	2007 Base Costs			Total Incl O&P
							Labor	Equipment	Total	
5950	Over 10 C.Y.	G-14C	75	1.493	C.Y.	154	52.50	.28	206.78	251
6000	Triangular or hexagonal, under 5 C.Y.		53	2.113		123	74.50	.40	197.90	252
6050	Over 10 C.Y.		85	1.318		138	46.50	.25	184.75	225
6200	Retaining walls, gravity, 4' high see division 32 32	G-14D	66.20	3.021		143	110	11.05	264.05	340
6250	10' high		125	1.600		136	58.50	5.85	200.35	246
6300	Canilever, level backfill loading, 8' high		70	2.857		156	104	10.45	270.45	345
6350	16' high		91	2.198		149	80.50	8	237.50	298
6800	Stairs, not including safety treads, free standing, 3'-6" wide	G-14H	83	.578	LF Nose	5.70	21	.26	26.96	39
6850	Cast on ground		125	.384	"	4.52	13.95	.17	18.64	26.50
7000	Stair landings, free standing		200	.240	S.F.	4.63	8.70	.11	13.44	18.75
7050	Cast on ground		475	.101	"	3.45	3.67	.05	7.17	9.55

03 31 Structural Concrete

Normal Weight Structural Concrete

03 31 05.30 Concrete, Field Mix

0010	CONCRETE, FIELD MIX	R033105-65								
0015	FOB forms 2250 psi				C.Y.	92.50			92.50	102
0020	3000 psi				"	96.50			96.50	106

03 31 05.35 Normal Weight Concrete, Ready Mix

0010	NORMAL WEIGHT CONCRETE, READY MIX	R033105-10								
0012	Includes local aggregate, sand, portland cement, and water									
0015	Excludes all additives and treatments	R033105-20								
0020	2000 psi				C.Y.	99.50			99.50	110
0100	2500 psi	R033105-30				101			101	111
0150	3000 psi					104			104	114
0200	3500 psi	R033105-40				106			106	116
0300	4000 psi					108			108	119
0350	4500 psi	R033105-50				110			110	121
0400	5000 psi					114			114	125
0411	6000 psi					130			130	143
0412	8000 psi					212			212	233
0413	10,000 psi					300			300	330
0414	12,000 psi					365			365	400
0416	1:4 topping					95			95	105
0417	1:3 topping					102			102	112
0418	1:2 topping					110			110	121
0420	High early strength, 2000 psi					105			105	115
0440	2500 psi					106			106	117
0460	3000 psi					109			109	120
0480	3500 psi					111			111	122
0520	4000 psi					114			114	125
0540	4500 psi					116			116	127
0560	5000 psi					120			120	132
0561	6000 psi					136			136	149
0562	8000 psi					222			222	245
0563	10,000 psi					315			315	345
0564	12,000 psi					380			380	420
0650	Normal weight, pumped, 2000 psi					110			110	120
0660	3000 psi					114			114	126
0670	4000 psi					119			119	131
0680	5000 psi					125			125	138

04 43 Stone Masonry

04 43 10.80 Slate		Crew	Daily Output	Labor-Hours	Unit	Material	2007 Base Costs		Total	Total Incl O&P
							Labor	Equipment		
4250	Honed finish	D-12	90	.356	L.F.	15.05	12.05		27.10	35
4400	2" thick, 6" wide	↓	140	.229	↓	17.75	7.75		25.50	31.50
4450	Honed finish	↓	140	.229	↓	16.95	7.75		24.70	30.50
4600	10" wide	↓	90	.356	↓	26.50	12.05		38.55	48
4650	Honed finish	↓	90	.356	↓	25	12.05		37.05	46
4800	For lengths over 3', add					25%				

04 43 10.85 Window Sill

04 43 10.85 WINDOW SILL		Crew	Daily Output	Labor-Hours	Unit	Material	2007 Base Costs		Total	Total Incl O&P
							Labor	Equipment		
0020	Bluestone, thermal top, 10" wide, 1-1/2" thick	D-1	85	.188	S.F.	15.45	6.30		21.75	26.50
0050	2" thick	↓	75	.213	"	18	7.10		25.10	30.50
0100	Cut stone, 5" x 8" plain	↓	48	.333	L.F.	11.40	11.10		22.50	29.50
0200	Face brick on edge, brick, 8" wide	↓	80	.200		2.41	6.65		9.06	12.80
0400	Mortar, 9" wide, 1" thick	↓	85	.188		8.40	6.30		14.70	18.80
0900	Slate, colored, unfading, honed, 12" wide, 1" thick	↓	85	.188		17.10	6.30		23.40	28.50
0950	2" thick	↓	70	.229	↓	24	7.60		31.60	37.50

04 51 Flue Liner Masonry

04 51 10.10 Flue Lining

04 51 10.10 FLUE LINING		Crew	Daily Output	Labor-Hours	Unit	Material	2007 Base Costs		Total	Total Incl O&P
							Labor	Equipment		
0020	8" x 8"	D-1	125	.128	V.L.F.	3.92	4.27		8.19	10.80
0100	8" x 12"	↓	103	.155	↓	5.85	5.20		11.05	14.35
0200	12" x 12"	↓	93	.172	↓	7.65	5.75		13.40	17.15
0300	12" x 18"	↓	84	.190	↓	13.15	6.35		19.50	24
0400	18" x 18"	↓	75	.213	↓	18.80	7.10		25.90	31.50
0500	20" x 20"	↓	66	.242	↓	30.50	8.10		38.60	46
0600	24" x 24"	↓	56	.286	↓	39	9.55		48.55	57.50
1000	Round, 18" diameter	↓	66	.242	↓	28.50	8.10		36.60	43.50
1100	24" diameter	↓	47	.340	↓	59	11.35		70.35	82.50

04 54 Refractory Brick Masonry

04 54 10.10 Fire Brick

04 54 10.10 FIRE BRICK		Crew	Daily Output	Labor-Hours	Unit	Material	2007 Base Costs		Total	Total Incl O&P
							Labor	Equipment		
0010	FIRE BRICK									
0012	Low duty, 2000° F, 9" x 2-1/2" x 4-1/2"	D-1	.60	26.667	M	1,150	890		2,040	2,625
0050	High duty, 3000° F	"	.60	26.667	"	1,900	890		2,790	3,425

04 54 10.20 Fire Clay

04 54 10.20 FIRE CLAY		Crew	Daily Output	Labor-Hours	Unit	Material	2007 Base Costs		Total	Total Incl O&P
							Labor	Equipment		
0010	FIRE CLAY									
0020	Gray, high duty, 100 lb. bag				Bag	53			53	58.50
0050	100 lb. drum, premixed (400 brick per drum)				Drum	66			66	72.50