

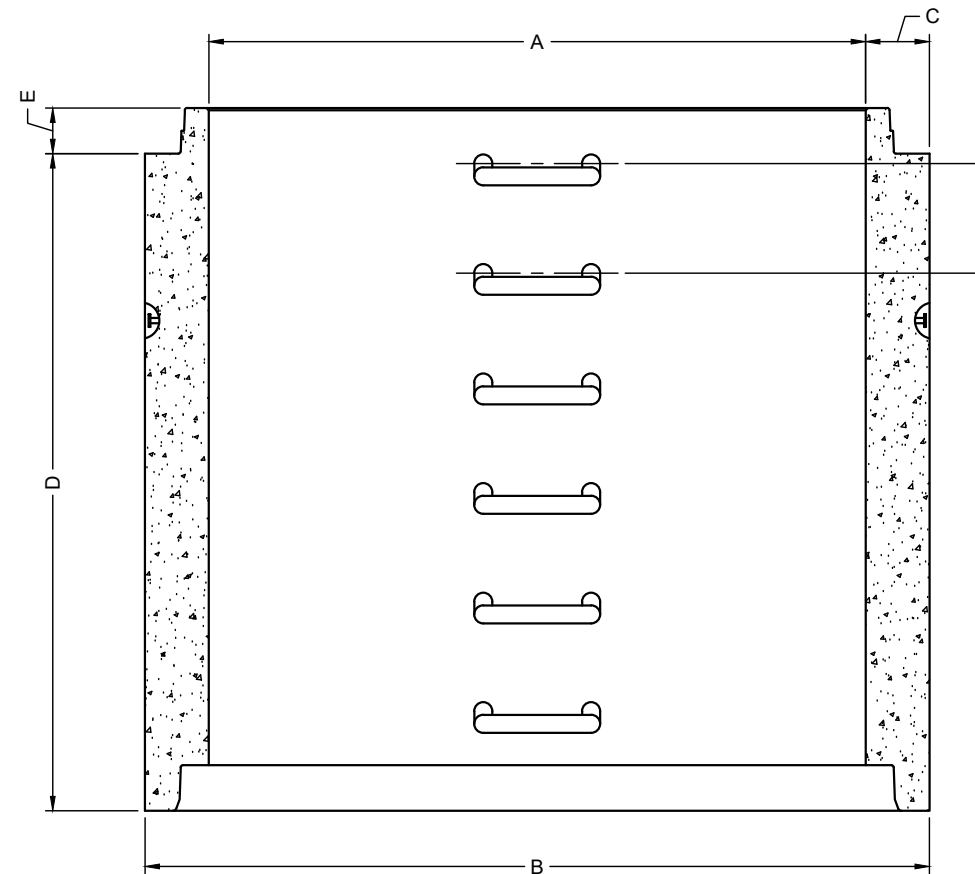
A ID	B OD	C THK.	D HEIGHT	E JOINT HT.	F SPACING
1829	2184	178	305	127	305
1829	2184	178	457	127	305
1829	2184	178	610	127	305
1829	2184	178	914	127	305
1829	2184	178	1219	127	305
1829	2184	178	1829	127	305

AVAILABLE HEIGHTS	QTY. OF RUNGS	STARCON LIFTING PINS	WEIGHTS [kg]
0.31m [1']	1	8T	769
0.46m [1.5']	2	8T	1162
0.61m [2']	2	8T	1555
0.91m [3']	3	8T	2341
1.22m [4']	4	8T	3127
1.63m [5.35']	6	8T	4701

CONCRETE		RELEASE	MPa	20
		28 DAY:	MPa	35
		AIR CONTENT:		6% ± 1%
WEIGHT:	kg	VOLUME	m ³	
TYPE:			kg/m ³	2402
STRAND			mm	-
			MPa	-
MARK	DESCRIPTION	QTY.		



ISOMETRIC VIEW
NTS



ELEVATION
VIEW



NOTES:

- 1) CEMENT : PORTLAND CEMENT TYPE 50(HS)
- 2) Max AGGREGATE SIZE: 20mm
- 3) 28 DAY STRENGTH: MIN. 35 MPa.
- 4) ENTRAINED AIR: 6%±1%
- 5) REINFORCING TO CAN/CSA-G30.18 400 MPa
- 6) ALL UNITS ARE IN MILLIMETERS UNLESS OTHERWISE NOTED.

DWG. NO.	REFERENCE	NO.:	REVISION DESCRIPTION	BY	APP'D	DATE	DRW BY	SWM	2018/11/21
-	-	A	ISSUED PLAN	-	-	2018/11/21	CH'K BY	-	-
-	-	-	-	-	-	-	AP'D BY	-	-
-	-	-	-	-	-	-	AP'D BY	-	-
-	-	-	-	-	-	-	AP'D BY	-	-
-	-	-	-	-	-	-	SCALE: NTS	PAGE: 1 OF 1	

TITLE:	
1800 RISER DETAIL DRAWING	
PROJECT NO.:	JOB NO.:
DRAWING NO.:	SVI-MR-1800-01A