

POLY-CRYSTALLINE SOLAR MODULE 60 CELLS - 156x156 mm



High reliability with guaranteed 0 to +5W power output tolerance



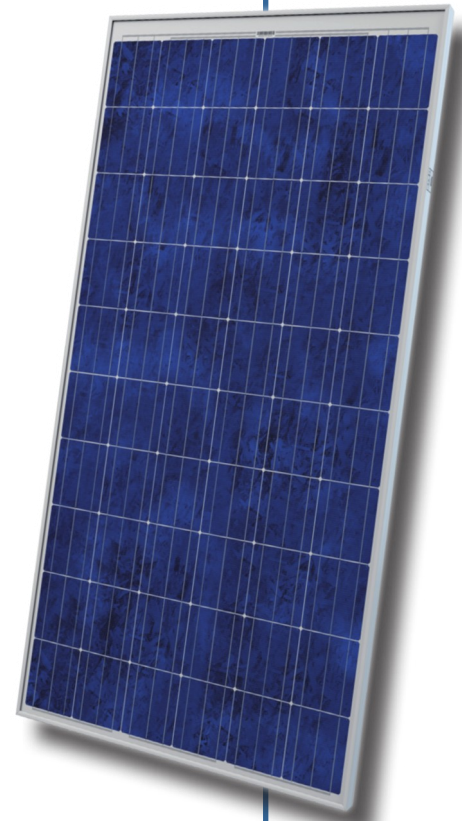
Excellent performance under different light conditions



25 Year Linear Power Warranty on the production to cover the investment



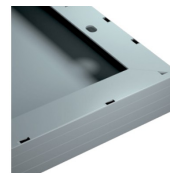
Passing mechanical load test of 5400 Pa to withstand heavier snow load and 2400 Pa to withstand wind pressure



RELIABLE PERFORMANCES

- World class manufacturer of crystalline silicon photovoltaic modules
- Production capacity of over 300MW/year
- Production facility and products certified under the most restrictive international standards
- Very high quality production process with continuous improving investments

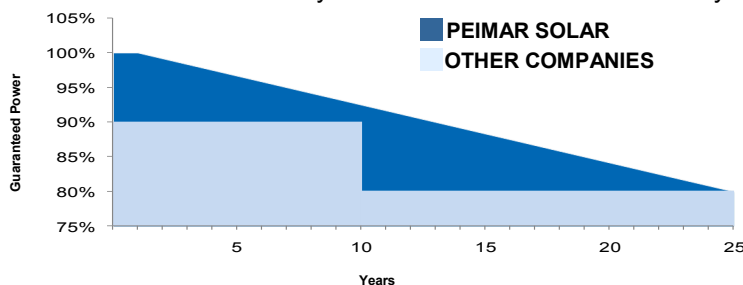
COMPACT AND DURABLE FRAME



Ultra-light aluminum frame with 40mm thickness to handle the panel in a easier way

LINEAR PERFORMANCE WARRANTY

10 Year Product Warranty • 25 Year Linear Power Warranty



IP65 JUNCTION BOX



Able to withstand the most varied atmospheric conditions

ELECTRICAL CHARACTERISTICS	PS240P	PS250P	PS260P
Nominal Output (Pmax) [W]	240	250	260
Flash Test Power Classification [W]	0 / +5	0 / +5	0 / +5
Voltage at Pmax (Vmp) [V]	30	30.5	30.5
Current at Pmax (Imp) [A]	8.0	8.2	8.52
Open Circuit Voltage (Voc) [V]	37.2	37.8	37.8
Short Circuit Current (Isc) [A]	8.65	8.87	9.22
Maximum System Voltage [V]	IEC: 1000 / UL: 600		
Maximum Series Fuse Rating [A]	12		
Cell Efficiency [%]	16.44	17.12	17.81
Module Efficiency [%]	14.75	15.37	15.98

STC* (Standard Test Condition): Irradiance 1000W/m², Module Temperature 25°C, Air Mass 1.5

TEMPERATURE CHARACTERISTICS

NOCT**	45±2 °C
Temperature Coefficient of Pmax	-0.43 %/°C
Temperature Coefficient of Voc	-0.32 %/°C
Temperature Coefficient of Isc	0.047 %/°C
Operating Temperature	-40 °C ~ +85 °C

NOCT**: Nominal Operation Cell Temperature Sun 800W/m²; Air 20°C; Wind speed 1m/s

MECHANICAL CHARACTERISTICS

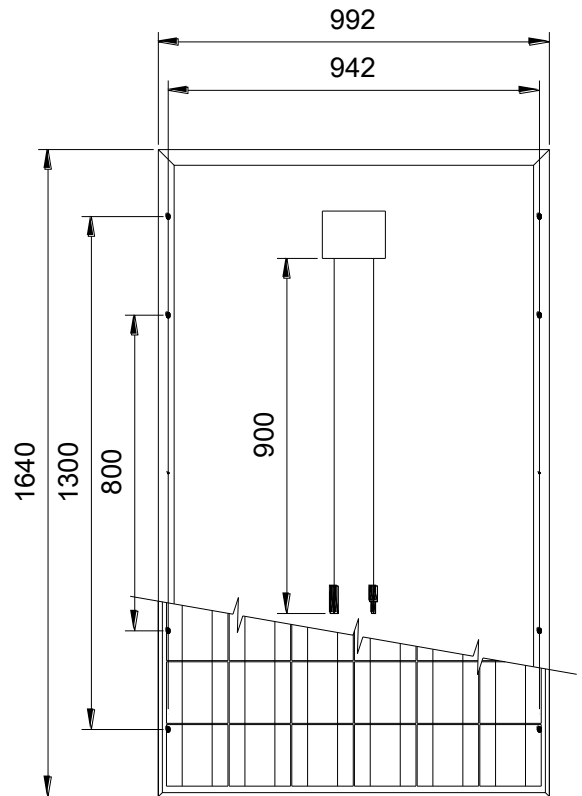
Solar Cells	60(6x10) poly-crystalline cells 156x156 mm
Front Cover	3.2 mm thick, low iron tempered glass
Back Cover	TPT (Tedlar-PET-Tedlar)
Encapsulant	EVA (Ethylene vinyl acetate)
Frame	Anodized aluminium alloy, double wall
Diodes	3 Bypass diodes serviceable
Junction Box	IP65 rated
Connector	MC4 or compatible connector
Cables	Length: 900 mm / Section: 4.0 mm ²
Dimensions	1640 x 992 x 40 mm
Weight	17 kg
Max. Load	Certified to 2400 Pa

PACKING CONFIGURATION

Pallet dimensions	1700 x 1100 x 1200 mm
Pieces per pallet	27 pcs
Weight	522 kg

* Pallets can be stacked up to two

DIMENSIONS



CURRENT/VOLTAGE CHARACTERISTICS

