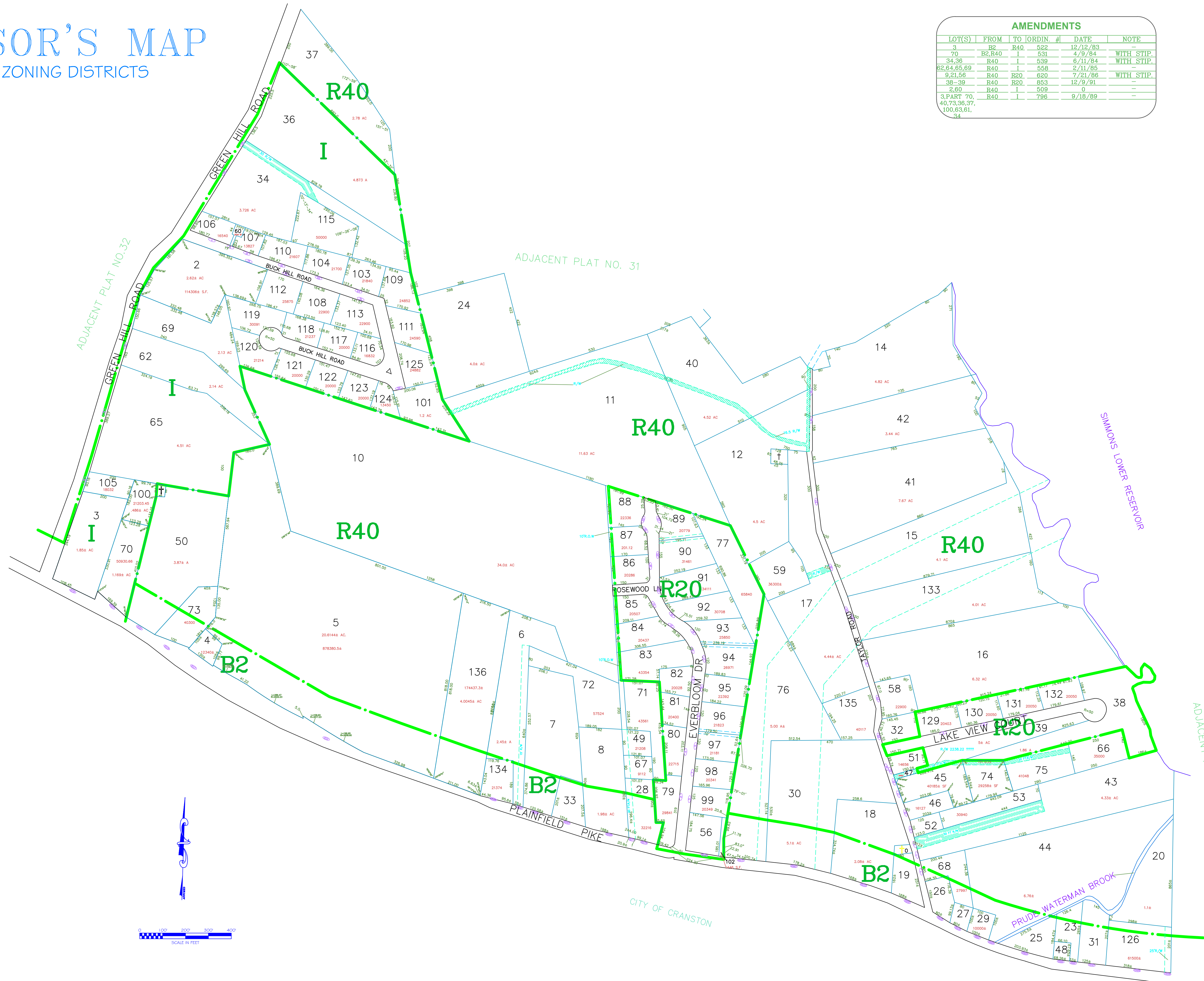
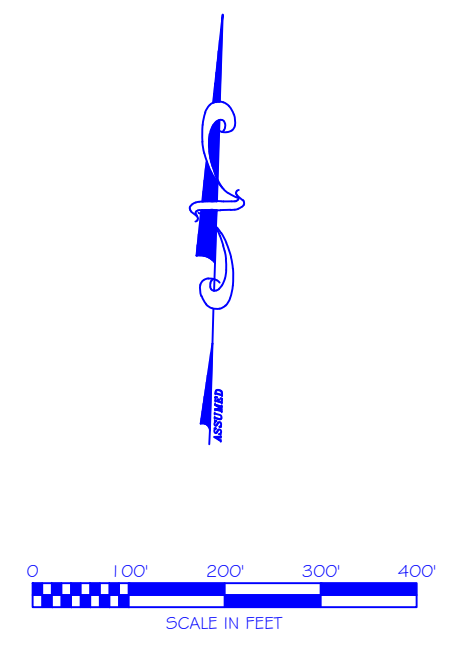


ASSESSOR'S MAP

SHOWING ZONING DISTRICTS



AMENDMENTS					
LOT(S)	FROM	TO	ORDIN. #	DATE	NOTE
3	B2	R40	522	12/12/83	
70	B2, R40	I	531	4/9/84	WITH STIP.
34, 36	R40	I	539	6/11/84	WITH STIP.
62, 64, 65, 69	R40	I	558	2/11/85	
9, 21, 56	R40	R20	620	7/21/86	WITH STIP.
38-39	R40	R20	853	12/9/91	
2, 69	R40	I	509	0	
3, PART 70, 40, 73, 36, 37, 100, 63, 61, 34	R40	I	786	9/18/89	



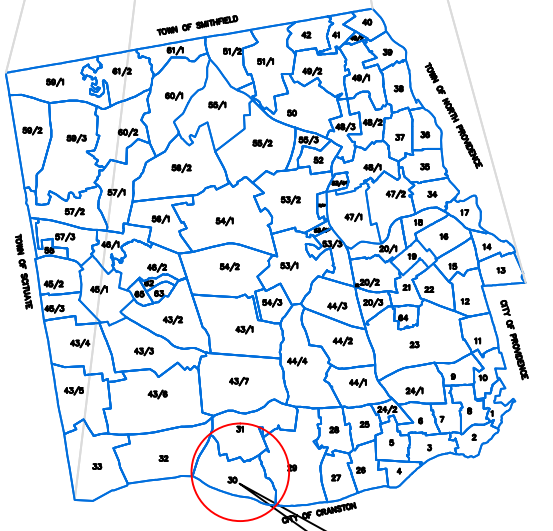
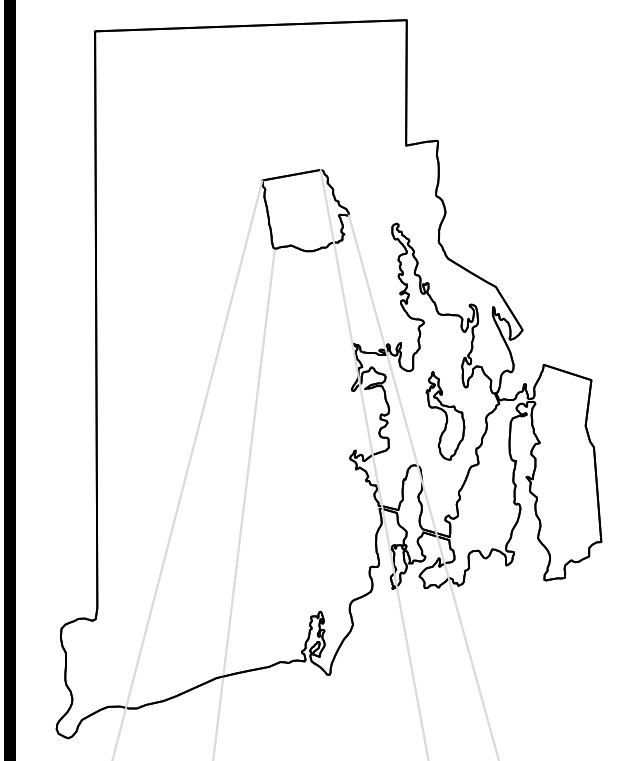
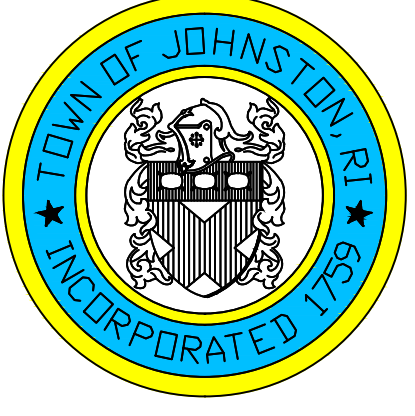
Assessor's Plat Number

30

STATE OF RHODE ISLAND
TOWN OF JOHNSTON

PROVIDENCE COUNTY
INCORPORATED 1759

ASSESSOR'S OFFICE
1385 HARTFORD AVENUE
JOHNSTON, RHODE ISLAND
02919



PLAT INDEX
AREA

Scale: 1:200
Revised By: Benjamin Ng
Last updated: January 04, 2016
Date printed: January 04, 2016

For copies of plat maps, please go to the DPW at 100 Irons Avenue Johnston Rhode Island. Thank you.

NOTE: This map was prepared for the use of the Town of Johnston for assessment and illustrative purposes only. It does not represent a survey of the premises. No liability is assumed as to the sufficiency or accuracy of the data delineated hereon.