



3088 Hottis Rd. Hale, MI 48739 Hale: 989.728.2200 Clare: 989.386.0600 Fax: 989.516.5900

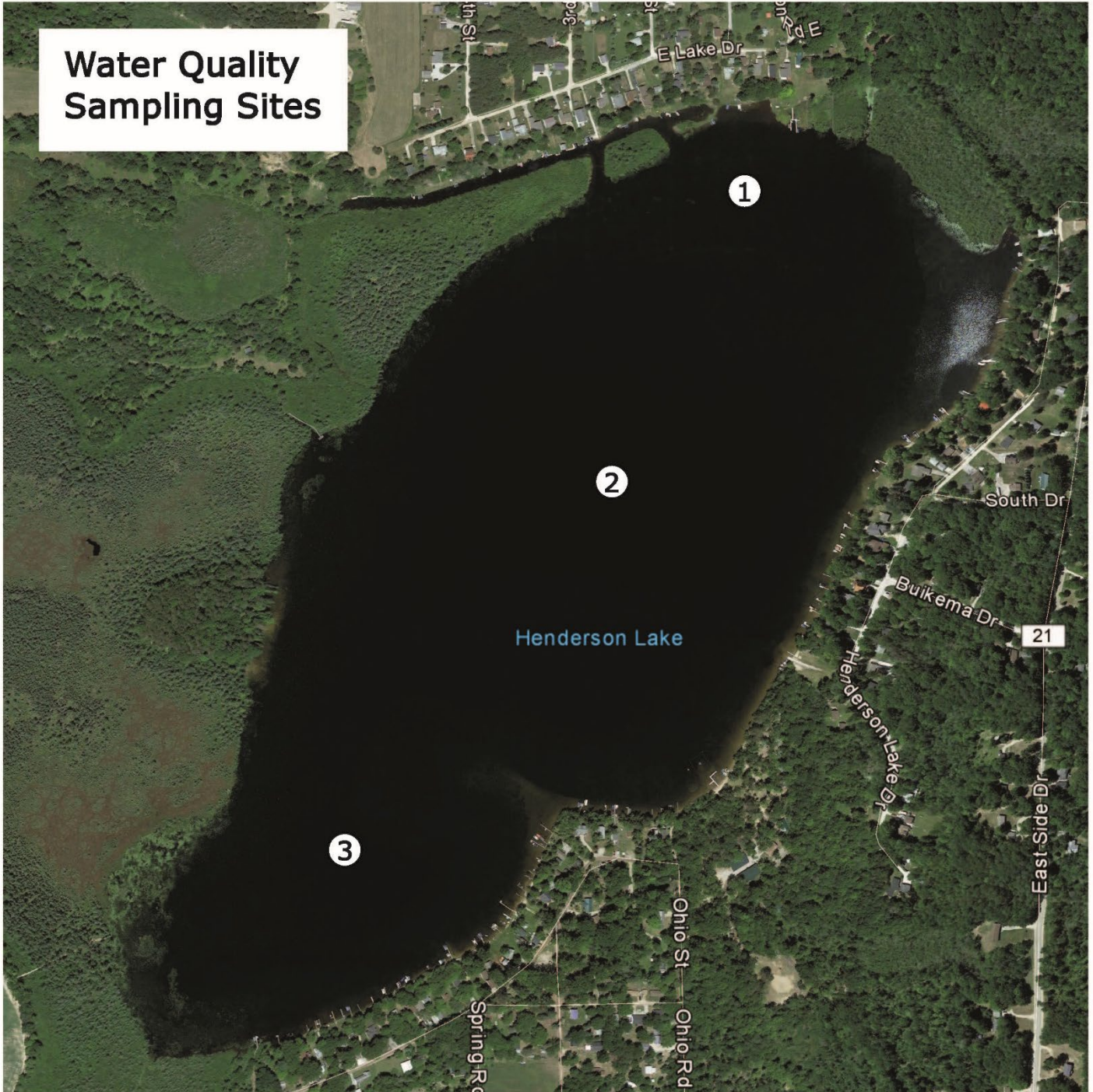
Henderson Lake 2025 Water Quality Report

Summary:

Water Quality Testing was completed 2 times on Henderson Lake at 3 different locations around the lake. Of the parameters tested, Temperature, Dissolved Oxygen, Secchi Disk, and pH were sampled while on the lake. Chlorophyll α , Nitrate-N, Phosphorus, Alkalinity, and Conductivity were sampled by sending the water in sample bottles to an independent laboratory, White Water Associates located in Amasa, MI, where the analysis was ran.

A well known limnologist named Wally Fusilier developed a grading scale for various parameters of water quality. Data collected in 2025 is shown below and given a grade based on Fusilier's scale. Additionally, historical data and parameter descriptions are provided at the end of this report.

Because herbicide treatment of aquatic vegetation has occurred on Henderson Lake, it should be noted that the application of herbicide no direct impact to the water quality of Henderson Lake.





3088 Hottis Rd. Hale, MI 48739 Hale: 989.728.2200 Clare: 989.386.0600 Fax: 989.516.5900

2025 Results:

Date	5/8/2025		5/8/2025		5/8/2025		9/8/2025		9/8/2025		9/8/2025	
Station Number	1		2		3		1		2		3	
Temp (°C)	14.1	A	14.2	A	14.4	A	21.1	A	20.4	A	20.2	A
Dissolved Oxygen (mg/L)	12.9		12.77		13.09		10.54		10.33		10.41	
Dissolved Oxygen (%saturation)	125.0	C	124.1	C	127.2	C	118.4	B	113.9	A	114.8	A
Chlorophyll a (ug/L)	0.0	A	0.0	A	0.0	A	130.0	F	210.0	F	0.0	A
Secchi Disk Depth (ft)	6.5	F	11.7	C	10.4	D	10.4	D	10.3	D	10.3	D
Total Nitrate Nitrogen (ug/L)	ND	A	ND	A	ND	A	ND	A	ND	A	ND	A
Alkalinity (mg/L)	83.0	A	79	A	78	A	75	A	76	A	74	A
pH	7.8	A	7.77	A	7.44	A	8.60	C	8.58	C	8.58	C
Conductivity (umhos/cm)	210.0	A	210	A	210	A	210	A	210	A	210	A
Total Phosphorus (ug/L)	<8	A	20	B	20	B	<8	A	<8	A	<20	A
Overall Grade		B		B		B		B		B		B

Scale:

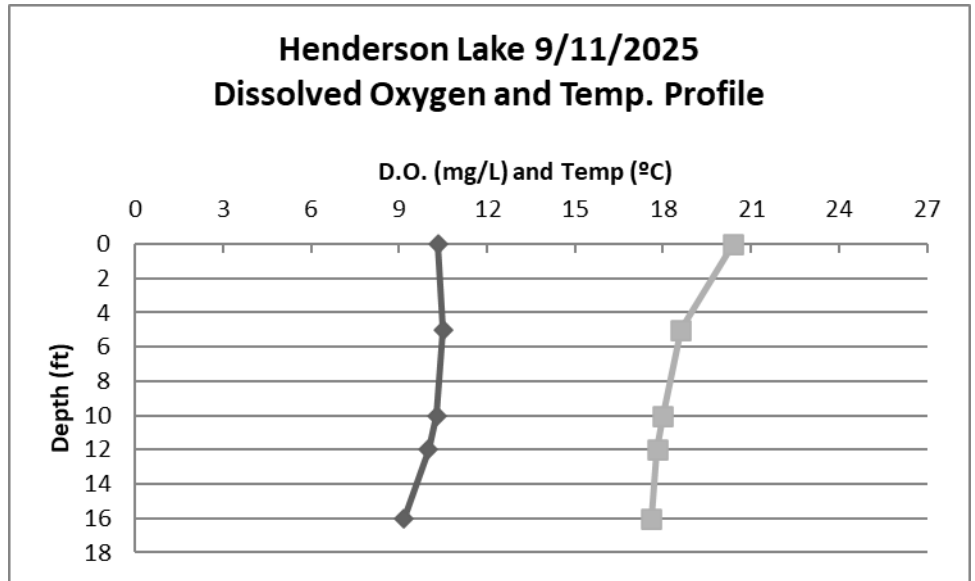
Grade	Temp	Dissolved Oxygen	Chlorophyll α	Secchi Disk Depth	Total Nitrate Nitrogen	Alkalinity	pH	Conductivity	Total Phosphorus
A	0-26.5	85-115	0-2	>19	0-275	50-225	5.75-8.27	0-380	0-20
B	26.5-28.5	85-77; 115-122	2-3	19-16	275-360	50-35; 225-255	5.75-5.55; 8.27-8.47	380-590	20-28
C	28.5-30	77-69; 122-131	3-4	16-12	360-450	35-23; 255-280	5.55-5.33; 8.47-8.69	590-720	28-39
D	30-31.5	69-62; 131-140	4-5	12-9	450-540	23-17; 280-310	5.33-5.14; 8.69-8.88	720-800	39-46
F	>31.5	<62; >140	>5	<9	>540	<17; >310	<5.14; >8.88	>800	>46

Preserving Our Lakes Today for Our Generations Tomorrow

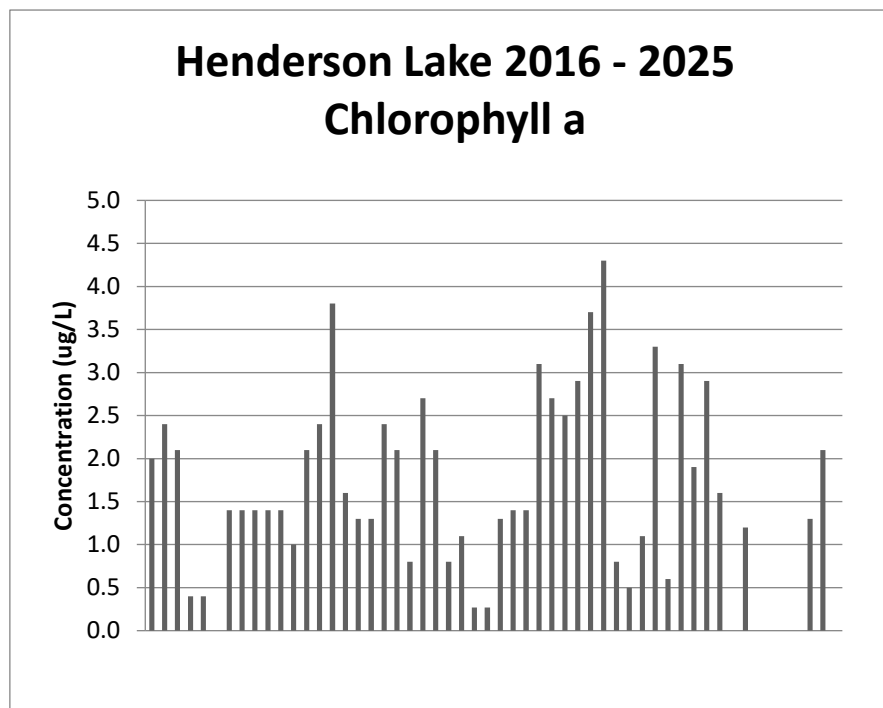
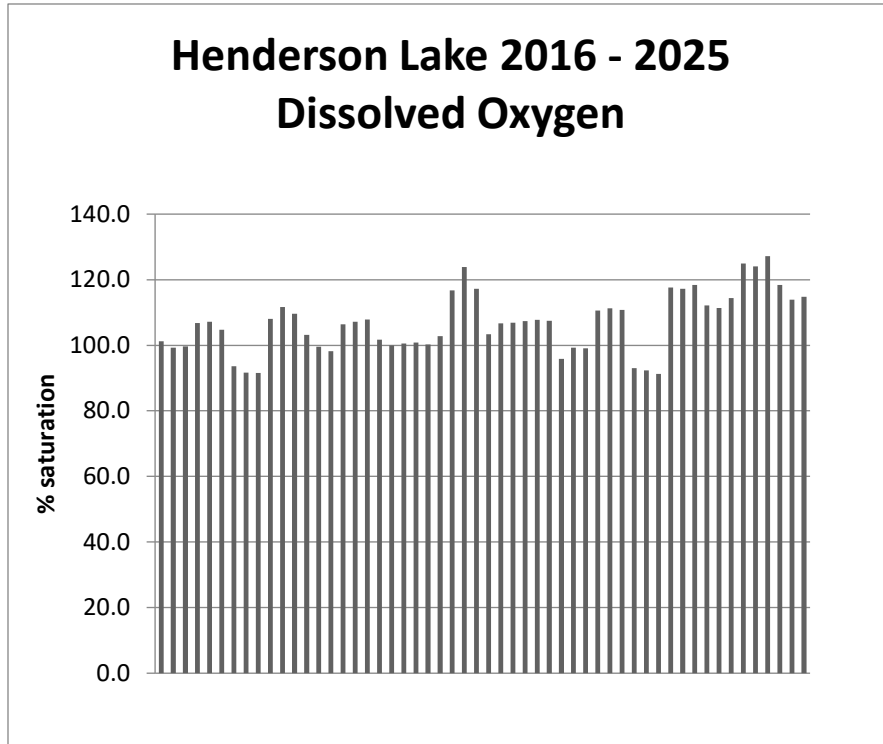
www.LakeAndPond.com

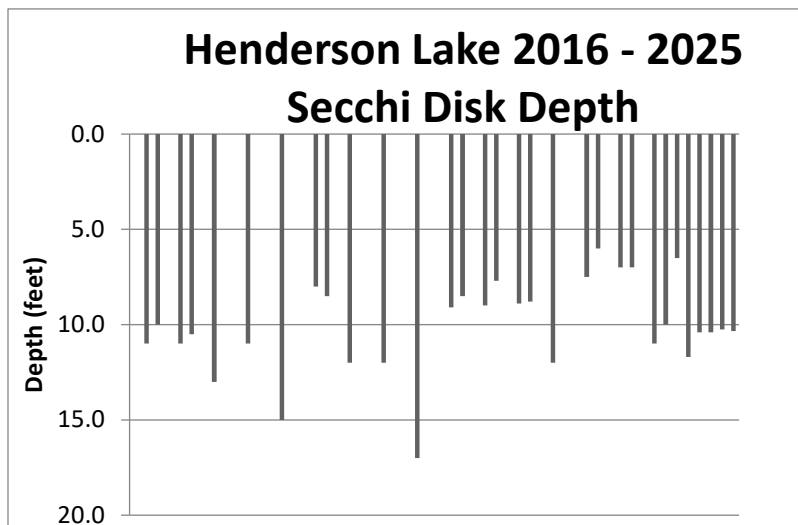
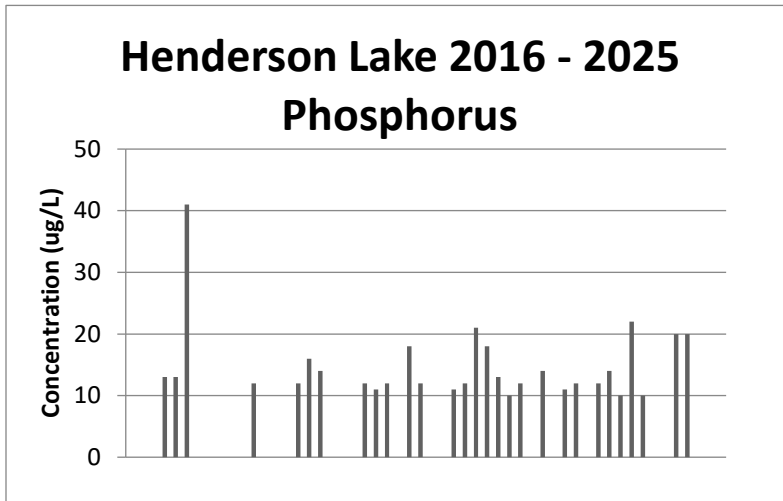
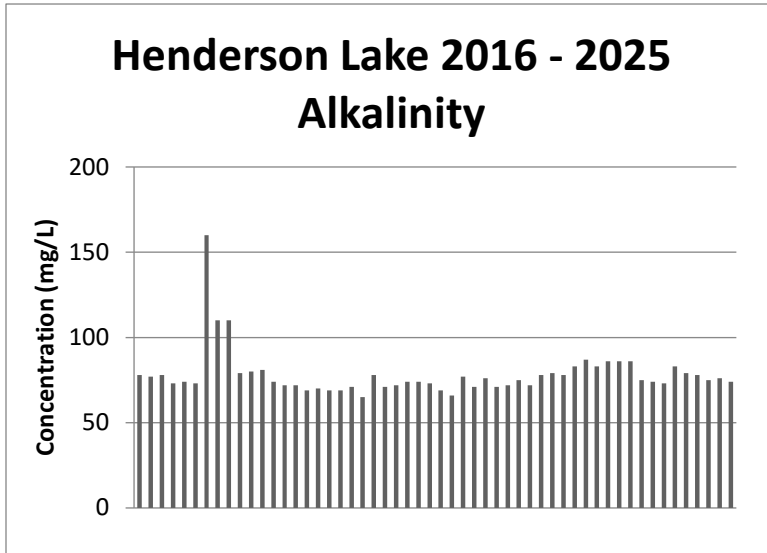
Dissolved Oxygen and Temp. Profile:

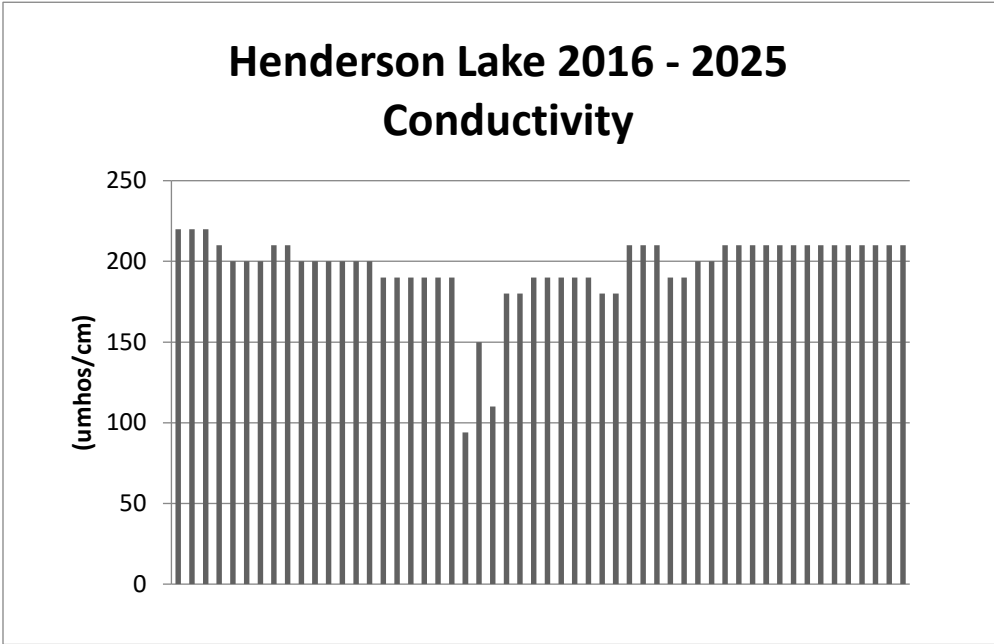
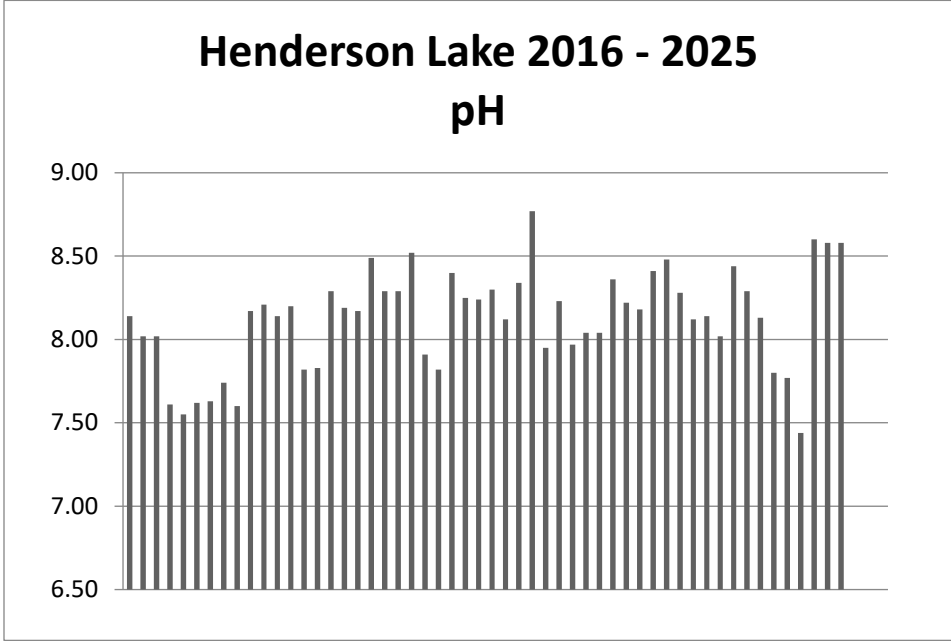
Temp (°C)	D.O. (mg/L)	Depth (ft)
20.4	10.33	0
18.6	10.5	5
18.0	10.28	10
17.8	10.00	12
17.6	9.17	16



Historical Data:







(Nitrate graph not shown due to majority of undefined values. Information contained in data on next page)



3088 Hottis Rd. Hale, MI 48739 Hale: 989.728.2200 Clare: 989.386.0600 Fax: 989.516.5900

Henderson Lake Water Quality Data												
Date	Sample Station Number	Temperature (°C)	Dissolved Oxygen		Chlorophyll α (ug/L)	Secchi Disk Depth (ft)	Total Nitrate Nitrogen (ug/L)	Alkalinity (mg/L)	pH	Conductivity umhos per cm at 25 °C	Total Phosphorus (ug/L)	Grade
			(mg/L)	Percent Saturation								
9/28/2016	1	17.2	9.77	101.2	2.0	Bottom	ND	78	8.14	220	<9	A
9/28/2016	2	17.0	9.58	99.3	2.4	11.0	ND	77	8.02	220	<9	A
9/28/2016	3	16.9	9.62	99.7	2.1	10.0	ND	78	8.02	220	<9	A
6/7/2017	1	23.4	9.14	106.8	0.4	Bottom	ND	73	7.61	210	13	A
6/7/2017	2	23.1	9.17	107.1	0.4	11.0	ND	74	7.55	200	13	A
6/7/2017	3	22.4	9.13	104.7	0.0	10.5	ND	73	7.62	200	41	A
10/4/2017	1	14.0	9.64	93.6	1.4	Bottom	ND	160	7.63	200	ND	A
10/4/2017	2	14.3	9.44	91.7	1.4	13.0	ND	110	7.74	210	ND	A
10/4/2017	3	14.1	9.43	91.6	1.4	Bottom	ND	110	7.60	210	ND	A
6/22/2018	1	25.3	8.90	108.0	1.4	Bottom	<80	79.0	8.17	200.0	<8	A
6/22/2018	2	24.7	9.20	111.7	1.4	11.0	<80	80.0	8.21	200.0	<8	A
6/22/2018	3	24.8	9.03	109.6	1.0	Bottom	<80	81.0	8.14	200.0	12.0	A
10/2/2018	1	15.8	10.2	103.1	2.1	Bottom	<80	74.0	8.2	200.0	<8	A
10/2/2018	2	15.3	10.0	99.6	2.4	15.0	<80	72.0	7.8	200.0	<8	A
10/2/2018	3	15.1	9.9	98.2	3.8	Bottom	<80	72.0	7.8	200.0	<8	A
5/24/2019	1	15.9	10.5	106.4	1.6	Bottom	<130	69	8.29	190	12.0	B
5/24/2019	2	15.7	10.6	107.2	1.3	8.0	<130	70	8.19	190	16.0	A
5/24/2019	3	15.7	10.6	107.8	1.3	8.5	<130	69	8.17	190	14.0	A
9/30/2019	1	14.5	10.2	101.7	2.4	Bottom	<130	69	8.49	190	<8	B
9/30/2019	2	14.8	10.1	100.0	2.1	12.0	<130	71	8.29	190	<8	B
9/30/2019	3	14.9	10.1	100.5	0.8	Bottom	<130	65	8.29	190	<8	A
9/24/2020	1	16.1	9.9	100.8	2.7	Bottom	<130	78	8.52	94	12	B
9/24/2020	2	16.2	9.9	100.2	2.1	12.0	<130	71	7.91	150	11	A
9/24/2020	3	16.4	10.1	102.7	0.8	Bottom	<130	72	7.82	110	12	A
5/14/2021	1	15.9	11.5	116.7	1.1	Bottom	ND	74.0	8.40	180.0	ND	A
5/14/2021	2	15.5	12.2	123.9	0.3	17.0	ND	74.0	8.25	180.0	18.0	A
5/14/2021	3	15.0	11.8	117.2	0.3	Bottom	140	73.0	8.24	190.0	12.0	A
9/17/2021	1	20.6	9.2	103.4	1.3	Bottom	ND	69.0	8.3	190.0	ND	A
9/17/2021	2	20.8	9.5	106.7	1.4	9.1	ND	66.0	8.1	190.0	ND	A
9/17/2021	3	20.1	9.7	106.9	1.4	8.5	ND	77.0	8.3	190.0	11.0	B
4/27/2022	1	9.6	12.1	107.4	3.1	Bottom	ND	71	8.77	190	12	B
4/27/2022	2	10.2	12.2	107.8	2.7	9.0	ND	76	7.95	180	21	B
4/27/2022	3	10.1	12.1	107.5	2.5	7.7	ND	71	8.23	180	18	B
9/22/2022	1	20.4	8.7	95.9	2.9	Bottom	ND	72	7.97	210	13	B
9/22/2022	2	20.6	9.0	99.3	3.7	8.9	ND	75	8.04	210	10	B
9/22/2022	3	20.1	9.0	99.1	4.3	8.8	ND	72	8.04	210	12	B
5/15/2023	1	11.0	11.9	110.6	0.8	Bottom	ND	78	8.36	190	<8	A
5/15/2023	2	10.6	12.0	111.2	0.5	12.0	ND	79	8.22	190	14	A
5/15/2023	3	10.5	11.9	110.8	1.1	Bottom	ND	78	8.18	200	<8	A
9/13/2023	1	19.0	10.5	93.0	3.3	Bottom	ND	83	8.41	200	11	B
9/13/2023	2	19.1	10.4	92.4	0.6	7.5	ND	87	8.48	210	12	B
9/13/2023	3	18.8	10.3	91.3	3.1	6.0	ND	83	8.28	210	<8	B
5//2/2024	1	15.2	11.8	117.6	1.9	Bottom	ND	86	8.12	210	12	A
5//2/2024	2	14.6	11.8	117.2	2.9	7.0	ND	86	8.14	210	14	B
5//2/2024	3	14.9	11.9	118.4	1.6	7.0	ND	86	8.02	210	10	A
9/20/2024	1	21.1	10.0	112.1	0.0	Bottom	ND	75	8.44	210	22	A
9/20/2024	2	20.7	9.9	111.3	1.2	11.0	ND	74	8.29	210	10	A
9/20/2024	3	20.5	10.2	114.4	0.0	10.0	ND	73	8.13	210	<20	A
5/8/2025	1	14.1	12.9	125.0	0.0	6.5	ND	83.0	7.8	210.0	<20	B
5/8/2025	2	14.2	12.8	124.1	0.0	11.7	ND	79.0	7.8	210.0	20.0	B
5/8/2025	3	14.4	13.1	127.2	0.0	10.4	ND	78.0	7.4	210.0	20.0	B
9/8/2025	1	21.1	10.5	118.4	1.3	10.4	ND	75.0	8.6	210.0	<20	B
9/8/2025	2	20.4	10.3	113.9	2.1	10.3	ND	76.0	8.6	210.0	<20	B
9/8/2025	3	20.2	10.4	114.8	0.0	10.3	ND	74.0	8.6	210.0	<20	B

Preserving Our Lakes Today for Our Generations Tomorrow

www.LakeAndPond.com



3088 Hottis Rd. Hale, MI 48739 Hale: 989.728.2200 Clare: 989.386.0600 Fax: 989.516.5900

Parameter Descriptions:

TEMPERATURE AND DISSOLVED OXYGEN

Temperature exerts a wide variety of influences on most lakes, such as the separation of layers of water (stratification), solubility of gases, and biological activity.

Dissolved oxygen is the parameter most often selected by lake water quality scientists as being important. Besides providing oxygen for aquatic organisms in natural lakes, dissolved oxygen is involved in phenomena such as phosphorus precipitation to, and release from, the lake bottom sediments and decomposition of organic material in the lake.

Low dissolved oxygen concentrations (below 4 milligrams per liter) are generally insufficient to support fish life. In most Michigan lakes, there is no dissolved oxygen below the thermocline in late summer. Some experts like to see some dissolved oxygen in the bottom water of a lake, even if it is almost zero. This is because as long as there is some dissolved oxygen in the water at the bottom of the lake, phosphorus precipitated by iron to the bottom sediments will remain there. Once a lake runs out of dissolved oxygen in the water at the bottom iron comes back into solution. When that happens, it releases the phosphorus back into the water. This can cause additional algae to grow when the lake mixes.

DISSOLVED OXYGEN, PERCENT SATURATION

Because the amount of dissolved oxygen a water can hold is temperature dependent with cold water holding more than warm water, dissolved oxygen saturation is often a better way to determine if oxygen supplies are adequate. The best is between 90 and 110 percent.



3088 Hottis Rd. Hale, MI 48739 Hale: 989.728.2200 Clare: 989.386.0600 Fax: 989.516.5900

CHLOROPHYLL α

Chlorophyll α is used by lake scientists as a measure of the biological productivity of the water. Generally, the lower the chlorophyll α , the better. High concentrations of chlorophyll α are indicative of an algal bloom in the lake, an indication of poor lake water quality. The highest surface chlorophyll α concentration found by Wallace Fusilier (Water Quality Investigators, WQI) in a Michigan lake was 216 micrograms per liter. Best is below one microgram per liter.

SECCHI DISK TRANSPARENCY (originally Secchi's disk)

In 1865, Angelo Secchi, the Pope's astronomer in Rome, Italy devised a 20-centimeter (8 inch) white disk for studying the transparency of the water in the Mediterranean Sea. Later an American limnologist (lake scientist) named Whipple divided the disk into black and white quadrants which many are familiar with today.

The Secchi disk transparency is a lake test widely used and accepted by limnologists. The experts generally felt the greater the Secchi disk depth, the better quality the water. However, one Canadian scientist pointed out acid lakes have very deep Secchi disk readings. (Would you consider a very clear lake a good quality lake, even if it had no fish in it? It would be almost like a swimming pool.) Most lakes in southeast Michigan have Secchi disk transparencies of less than ten feet. On the other hand, Elizabeth Lake in Oakland County had 34 foot Secchi disk readings in summer 1996, evidently caused by a zebra mussel invasion a couple of years earlier.

Most limnology texts recommend the following: to take a Secchi disk transparency reading, lower the disk into the water on the shaded side of an anchored boat to a point where it disappears. Then raise it to a point where it's visible. The average of these two readings is the Secchi disk transparency depth.



3088 Hottis Rd. Hale, MI 48739 Hale: 989.728.2200 Clare: 989.386.0600 Fax: 989.516.5900

Secchi disk measurements should be taken between 10 AM and 4 PM. Rough water will give slightly shallower readings than smooth water. Sunny days will give slightly deeper readings than cloudy days. However, roughness influences the visibility of the disk more than sunny or cloudy days.

TOTAL PHOSPHORUS

Although there are several forms of phosphorus found in lakes, the experts selected total phosphorus as being most important. This is probably because all forms of phosphorus can be converted to the other forms. Currently, most lake scientists feel phosphorus, which is measured in parts per billion (1 part per billion is one second in 31 years) or micrograms per liter ($\mu\text{g}/\text{L}$), is the one nutrient which might be controlled. If its addition to lake water could be limited, the lake might not become covered with the algal communities so often found in eutrophic lakes.

Based on WQI's studies of many Michigan inland lakes, they've found many lakes were phosphorus limited in spring (so don't add phosphorus) and nitrate limited in summer (so don't add nitrogen).

10 parts per billion is considered a low concentration of phosphorus in a lake and 50 parts per billion is considered a high value in a lake by many limnologists.



3088 Hottis Rd. Hale, MI 48739 Hale: 989.728.2200 Clare: 989.386.0600 Fax: 989.516.5900

NITRATE NITROGEN

Nitrate, also measured in the parts per billion range, has traditionally been considered by lake scientists to be a limiting nutrient. The experts felt any concentration below 200 parts per billion was excellent in terms of lake water quality. The highest value found by Fusilier was 48,000 parts per billion in an Ottawa County river which flowed into Lake Macatawa in Holland, Michigan.

On the other hand, WQI has studied hundreds of Michigan inland lakes, and many times they find them nitrate limited (very low nitrate nitrogen concentrations), especially in summer.

WQI was finding many lakes have lower nitrate nitrogen concentrations in summer than in spring. This is probably due to two factors. First, plants and algae growing in lakes as water warms can remove nitrates from the water column. And second, bacterial denitrification (where nitrates are converted to nitrogen gas by bacteria) also occurs at a much faster rate in summer when the water is warmer.

Generally limnologists feel optimal nitrate nitrogen concentrations (which encourage maximum plant and algal growth) are about 10-20 times higher than phosphorus concentrations. The reason more nitrogen than phosphorus is needed is because nitrogen is one of the chemicals used in the production of plant proteins, while phosphorus is used in the transfer of energy, but is not used to create plant material. If the nitrate concentration is less than 10-20 times the phosphorus concentration, the lake is considered nitrogen limited. If the nitrate concentration is higher than 10-20 times the phosphorus concentration, the lake is considered phosphorus limited.



3088 Hottis Rd. Hale, MI 48739 Hale: 989.728.2200 Clare: 989.386.0600 Fax: 989.516.5900

TOTAL ALKALINITY

Alkalinity is a measure of the ability of the water to absorb acids (or bases) without changing the hydrogen ion concentration (pH). It is, in effect, a chemical sponge. In most Michigan lakes, alkalinity is due to the presence of carbonates and bicarbonates which were introduced into the lake from ground water or streams which flow into the lake. In lower Michigan, acidification of most lakes should not be a problem because of the high alkalinity concentrations

HYDROGEN ION CONCENTRATION (pH)

pH has traditionally been a measure of water quality. Today it is an excellent indicator of the effects of acid rain on lakes. About 99% of the rain events in southeastern Michigan are below a pH of 5.6 and are thus considered acid. However, there seems to be no lakes in southern Michigan which are being affected by acid rain. Most lakes have pH values between 7.5 and 9.0.

SPECIFIC CONDUCTIVITY

Conductivity, measured with a meter, detects the capacity of a water to conduct an electric current. More importantly however, it measures the amount of materials dissolved in the water, since only dissolved materials will permit an electric current to flow. Theoretically, pure water will not conduct an electric current. It is the perception of the experts that poor quality water has more dissolved materials than does good quality water