

Since 1948 Exploring the Wonderful World of Beekeeping Together

The Bee Buzzer

Monthly Publication of the

Northeastern Kansas Beekeepers' Association

VOLUME 77, NUMBER 8

EDITOR: TIM MARSHALL

August 2025

General Meeting

Monday, Aug 18th, 2025 (7:00 p.m.)

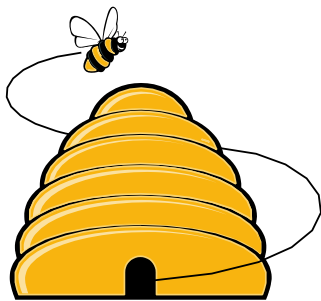
Douglas County Fairgrounds Bldg. 21N

2110 Harper St., Lawrence KS

Main Program: Beekeeper Roundtable - Breaking out into small groups where you'll be able to get help and ask questions from our more experienced beekeepers. Enjoy a cool building and a small, relaxed group chat, certain parts of the beekeeping season are over, but others are just beginning. It can be intimidating to ask questions in front of the entire group. This is a chance to have a small group setting to learn and find out what other beekeepers might be doing differently.

Beelines




By President Cheryl Burkhead



Harvest time is here. As you pull your honey supers, assess your colony for size, mite load, food stores, and make sure that it is queenright. Most colonies should still have brood in the center of the top hive body. Queenless colonies can easily be corrected with a resource nuc or combined with another colony. Combine colonies that are weak. Proactive placement of an entrance reducer later this month and combining weak colonies can help prevent robbing situations and assist the colony in defending itself against unwanted pests like yellow jackets. Many will be initiating some form of mite management this month. Remember to evaluate your colonies after treatment to ensure adequate mite knockdown and treat again if needed.

Are you interested in getting more involved in your club? We have several opportunities for 2026! Our nominating committee has been working diligently over the past several weeks. We have the following board positions that need filled: President, Program Chair, Youth Scholarship Chair, Editor, and Fun Day Coordinator. We need your help to fill these critical positions for the upcoming year. If you have skills to share, please contact me or one of our nominating committee: Elaine Ellenz, Jo Patrick, or Becky Tipton and express your interest. This club would not exist without you and your active participation.

2025 Meeting Dates:

- 
- Aug 13th, Honey Extraction in Lenexa, KS (Open Apiary Honey)
 - Aug 18th, Open Apiary & Monthly Meeting
 - Sept 4th, Open Apiary @Joli & Cecil's (5-7pm)
 - Sept 7th, Open Apiary @Pendleton's Country Market
 - Sept 15th, Open Apiary & Monthly Meeting
 - October 2nd, Open Apiary @Joli & Cecil's (5-7pm)
 - October 5th, Open Apiary @Pendleton's Country Market
 - October 20th, Open Apiary & Monthly Meeting
- 
- 

Ol' Bee Gal



It's the home stretch of the beekeeping season this month and most of us are looking towards fall. At our house, this includes preparation for the [Kansas State Fair](#). I finished making 18 batches of soap that will be wrapped and ready to deliver to the Pride of Kansas building the first week of September. Steve is bottling honey we produced in the ten hives we manage for the [Kansas Honey Producers Association](#). Labels are being printed, packages packed and lists double checked to be sure everything is ready. Many

KHPA members from across the state are making products with beeswax and/or honey to be sold in the booth. A large portion of the booth is also designated for educational interests. School kids and multitudes of adults stop by the observation hive to marvel at the bees in their natural environment.

The Kansas Honey Producers Association represents beekeepers from across the entire state of Kansas. Participating in the state fair helps increase awareness of the benefit of honey bees as part of our agricultural system and the benefits of the products from the hive. You can help by becoming involved in this organization. Honey and honey products are needed for sales. Man power is needed to work the booth before and during the fair. Working at the state fair is a fun and educational opportunity for everyone. Proceeds from the booth have helped fund the KHPA meetings, keeping our costs low. Kristi Sanderson is the VP in charge of the Kansas State Fair booth. She has information elsewhere in this newsletter about how to sign up to help ([Sign up Genius](#)). If you do, you will be GREATLY appreciated.

Another part of the fair is the honey show. KHPA sponsors the honey show by paying for the judge(s), buying the award ribbons, and providing the premium money for the winners. The honey show can be quite impressive and winning doesn't just feel good, it gives you bragging rights for the next year about the quality of your product! We have added a couple interesting categories. Black jar honey is an entry based solely on taste. The bragging rights for the winner here – the best tasting honey in Kansas! A new category this year will be the Judges Choice Award. One entry will be selected as outstanding – it could be any entry in any category that the judge deemed above and beyond the other entries. This is exciting. There will also still be a Sweepstakes winner (sometimes called Best of Show) but is a compilation of total points of all the entries of a single participant. The goal to win this award is enter everything. Even lesser entries are counted as points towards the Sweepstakes. Create an entry for everything and you could be the winner. It is not too late to enter but there is a small entry fee.

Another fun feature at the fair is the extra 'bee school' presentations. Each morning, someone from the KHPA honey booth will present on a single topic related to beekeeping and or honey. This happens right in the Pride of Kansas Building. The topics range from how honey is made and the kinds of honey on display in the honey show to bee behavior, the value of pollination, and the many uses for beeswax. These mini lessons are to bring awareness to the public about the vastness of the honey bees and their value.

So, come join us. Come to the fair. Come to the KHPA meeting in November. Become part of an excellent organization fostering knowledge of honey bees, pollinators, business opportunity, and friendships. (Full disclosure, I am the president of the Kansas Honey Producers. I spend my time working within this organization because I believe they make a difference for bees, beekeepers, and the honey industry.)

Becky Tipton

ASK QUINBY & REMI

Dear Quinby and Remi: I'm getting ready to go on vacation for a few weeks, I'm thinking about pulling my honey now and extracting when I get back- what do you think?

Quinby and Remi answer: GRRRRR No don't do that! For several reasons. One is that with this heat wax moths would take over your stored honey. But more important than that is probable small hive beetle damage. After just a few days, small hive beetles can destroy a honey crop by "sliming" your equipment- not only



ruining your honey but also ruining your equipment. Before small hive beetles, Cecil would pull all his honey and then extract when he had time. Now he pulls a yard or two, extracts, pulls a few more yards, extracts etc.

Dear Quinby and Remi: While we have had a short cool spell, the heat is going to be returning this week. What can we do to help the bees this month?

Quinby and Remi answer: Provide water- a bird bath or bucket with rocks in it can be welcome to the bees. Also, with this crazy, wet weather we are still having to mow in August! Make sure and mow or weed eat around the hives so they can easily get in and

out. The bees will thank you.

Dear Quinby and Remi: What can I do to further my beekeeping education this fall?

Quinby and Remi answer: There are still several open teaching apiaries available for you to attend more information in this Buzzer! You can also attend our monthly meetings held in Lawrence at the Douglas County fairgrounds. The Kansas Honey Producers will be meeting in Salina the first weekend of November- they always have a great program.

Dear Quinby and Remi: How do you evaluate your hives now for survival?

Quinby and Remi answer: As we pull off our honey supers, we check our hives to make sure they are queen right. We also look for all stages of bee development and look at the brood pattern to make sure the pattern is solid. If none of those things are right, we decide if we want to try to fix the hive or combine it with another hive. It is always best to take your losses in the fall, rather than try to baby a hive through the winter.

We also try to test and then treat for varroa immediately after we remove the honey supers. All the bees in the supers go into the hive body- providing more varroa mites to enter the cells. The quicker those mites are killed the healthier the bees will be going into winter. Dr. Judy Wu-Smart suggests that all honey should be off by Labor Day and treated for mites so that the hives can have several rounds of fat healthy bees going into winter. Low mite loads and healthy bees can go a long way to help with winter survival.

Feeding bees is also important-if they need it! If your top hive body is full of honey, so full that you can't lift it, you do not need to feed. But if your top hive body is not full, you do need to feed. We see that some of the hives are already moving the queen below in the bottom hive body and that is where the brood is- they are preparing for winter by getting that top hive body full of honey. The bees know what to do, but sometimes they need a little help.



The NEKBA Beeyard

At this month's OTA we began our treatments for varroa mites. We talked about the various choices and checked the populations in several hives. We hope to pull supers off this week and extract on Wednesday August 13th. If you are interested in helping us extract, please call or text Joli at 913-593-3562. This is still tentative so please watch for NEKBA FaceBook page for an update. When we can pull supers, I'll post that on Facebook too—always nice to have some help with carrying supers!

Join us this year at our Open Teaching Apiary (OTA) located at Pendleton's Country Market, 1446 E 1850 Rd., Lawrence KS 66046. During our OTA events we typically go through hives looking for the queen, eggs, larva and brood. We talk about what we should be doing in our hives. We also spend a lot of time talking about your hives- we answer a lot of questions!

We ask that you register through sign-up genius so that we know how many are coming and we can get in touch with you if we must cancel. Please bring your beekeeping suit but note that we have extras. Please use this link to sign up <https://www.signupgenius.com/go/10C054DA9A72CA2FAC70-55554696-open> check out our NEKBA website at www.nekba.org for more information and schedule changes. For questions call Joli at 913-593-3562. OTA Dates (other dates may be added)

Monday, August 18	5:00-6:30(Before the NEKBA monthly meeting)
Sunday, Sept. 7	1:00-3
Monday, Sept. 15	5:00-6:30 (Before the NEKBA monthly meeting)
Sunday, October 5	1:00-3
Monday, October 20	5-6:30. (Before the NEKBA monthly meeting)



Open Teaching Apiary in Spring Hill

Join Joli Winer and Cecil Sweeney for mentoring sessions one day a month. Please call, text or email to secure your spot. Extra suits are available. Sessions start at 5:00 pm, about 2 hours. 19201 S Clare Rd Spring Hill KS 66083 913-593-3562

heartlandhoneyks@gmail.com

September 4, October 2 5-7pm

Tips for August

- Colony population is at its peak and will start to decline, pests are still growing strong. Pest load as a % is getting ready to go through the roof!
- Take a deep breath, in some ways the rush is over and in other ways it's just begun.
- Honey extraction - do it yourself, rent some equipment, borrow some equipment, pay someone else, there are many options.
- It's hot, you're not going to be the happiest and neither are the bees. Smoker and protection time!
- Getting late to do a split and expecting it to go through winter, but if you have that many bees and excess equipment it can be a beautiful learning experience to see a queen cell grow and lay for the first time.
- Mite treatments - you get limited in hot weather, but sometimes you can do reduced dosage multiple times in hot weather. Always read the label on treatments!!



Bees Under the Dome returns on February 4, 2026 —

HB2158 buzzes into the New Year

The Kansas State Capitol will once again be buzzing with excitement as the 2nd annual "Bees Under the Dome" event returns on Tuesday, February 4, 2026. This event will be organized by the Kansas Honey Producers Association (KHPA) and the

Northeastern Kansas Beekeepers Association (NEKBA).

This yearly tradition brings together beekeepers, legislators, and the public to raise awareness about honey bees, native pollinators, and the role of beekeeping in Kansas agriculture. Visitors can expect educational exhibits, beekeeper resources, and plenty of honey-themed conversation. Last year's event drew over 200 attendees, and this year's timing is expected to boost engagement even further. The goal is to be seen regularly at the Capitol so we can be seen as a resource for the Legislators and their staff.

HB2158 – A Quick Recap and What's Next in 2026:

HB2158 was introduced during the 2025 legislative session by Representative Rebecca Schmoie to allow Kansas beekeepers earning under a specified threshold to sell honey in retail settings without a commercial kitchen license, provided they meet specific safety and labeling requirements.

2025 Highlights:

- The House passed the bill 85–34 after removing the original \$50,000 income cap.
- The Senate approved it 40–0 but reinstated a lower income limit of \$25,000, added a free registration with the Kansas Department of Agriculture (KDA), and required a label disclaimer:
“Product not subject to routine inspection by the Kansas Department of Agriculture.”
- The bill went to Conference Committee on March 25 but stalled due to unresolved differences between the House and Senate versions.

Looking Ahead:

The bill is still alive and well. It will resume in the 2026 legislative session starting in Conference Committee, avoiding the need to restart from scratch. Advocates hope HB2158 will be one of the first bills signed into law in the new session, potentially simplifying life for hundreds of Kansas beekeepers early in the year.

Want to Get Involved?

If you're a beekeeper, pollinator enthusiast, beekeeping organization, or just curious about local agriculture, consider attending “Bees Under the Dome” on February 4, 2026. KHPA and NEKBA also welcome volunteers and local association partners for the event.

Stay engaged, stay informed, and support the bees who help keep Kansas blooming.

If you have any questions, please let me know. Buck Bradley 785-248-1005 Babradley82@gmail.com

Buck Bradley, Military/Veteran Appr. Liaison



Honey Plants

If this was your first year in beekeeping and your bees produced honey for you to harvest, congratulations! If you didn't have honey to harvest this year, do not despair. It's never a sure thing the first year. Moving into late summer our next task is to focus on continuous food availability during the hot season. In the fall, nectar will be critical for building up winter food stores. Having nectar continually coming into the hive will make fall beekeeping much easier to manage and you may need to feed less sugar syrup to the bees. Does the foraging area surrounding your colonies have enough food sources available for winter food stores? This is a question you will want to ask yourself. Monitor for starvation and be prepared to feed sugar syrup anytime in late summer and fall.

August is when honey bees begin foraging on milkweed. Also, in bloom will be Blazing Star *Liatris*, native and annual Sunflowers, Black Eyed Susans, Coneflowers, *Caryopteris*, Blue Vervain, fall blooming Sedums, Sweet Autumn Clematis, Wingstem, and Blue Vine among others. You may notice that most of these plants listed are native. I recently read an article in praise of native plants. The writer used the phrase “super-foods for pollinators”. Even though *Apis mellifera* originates from Europe native plants can be an asset.

Did you know there is a species of coneflower named Topeka Coneflower? *Echinacea atrorubens* is native to eastern Kansas, Oklahoma, and eastern Texas. It can be found growing in dry soils around limestone and sandstone outcroppings and in the prairie.

If you are not familiar with Wingstem, aka Golden Honey Plant, it's a native plant that blooms for weeks, beginning in August. Wingstem plants can reach a height of up to 8 ft. and it easily reseeds itself. In the spring, shoots will emerge from the roots. The flowers are a bright yellow that grow in clusters on top of stalks. It does prefer a moist or lowland location and is easy to start from seed. I found a good source for seed at <https://prairielegacyinc.com/>. Prairie Legacy is located on the plains of Nebraska and focuses on native plants and seeds. I have always had a very good experience when ordering from them.

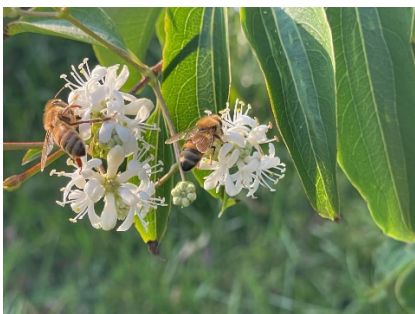
Those with colonies located in rural farm areas may see some benefit from the fields of soybeans in bloom. It's not a guarantee as honey bees seem to prefer some varieties of soybeans over others. Although honey bees are not essential to soybean production, they commonly visit soybean fields for forage and studies show that pollination results in increased soybean yield. Establish a relationship and communicate with any farmers near your apiary. Soybeans receive several applications of pesticides while growing. Ask the farmer if he will notify

you when he's going to spray so you can protect your bees by screening them in the hive those days. Registering your apiary at DriftWatch can also be beneficial. Sign up at <https://ks.driftwatch.org/> There is one fall blooming tree called the Seven Sons tree. Cheryl Burkhead has a Seven Sons tree that begins blooming in mid-August. Seven Sons grows into a shrub or small tree and would be a great accent tree in home landscaping. It is a member of the honeysuckle family. Cheryl's tree produces white blooms, but another variety produces bright red flowers. This rare, late summer bloomer attracts honey bees, native bees, butterflies, and hummingbirds.

In the past I have mentioned that fall is an excellent time to plant. Trees, shrubs, and perennials do quite well when planted after the heat of summer has passed. Keeping up with watering is much easier in the fall. During the winter months the roots will continue to grow and in the spring your plants should really take off and be much more robust. I have taken advantage of summer sales and held these plants in an area protected away from direct, hot sunlight but near a garden hose. In September, October, or November I planted my bargains with great success.

You might want to take advantage of Deep Roots' Fall Plant Sale located at the Prairie Village City Hall parking lot, 10 AM to 2 PM, Saturday, September 13. Participating vendors are City Roots, Forrest-Keeling Nursery (tree specialists), The Missouri Wildflower Nursery, and Parsons Gardens. They are also hosting a Habitat Garden Tour that day. Additional information about the plant sale and to sign up for the garden tour is available at their website <https://deeproots.org/native-plant-sales-missouri-and-kansas/>

Parsons Gardens will also be selling native plants at the annual Hasta Luego Monarchs event on Saturday, September 27, 8 a.m.-Noon. This event will be at the Pollinator Prairie, 320 South Blake, Olathe, KS 66061. This family celebration of Monarch butterflies and pollinators is free to the public.



Seven Sons tree - Photo courtesy of Cheryl Burkhead.

Jo Patrick, Honey Plants Chairman



Volunteers Needed for Honey Sales Booth at Kansas State Fair

This year volunteers will be needed from September 3-14, 2025, at the fair. The Pride of Kansas building will be open from 9AM-9PM the 5th-14th. Volunteers will be needed to set up display area on the 2nd and label products to be sold in the booth. Our time frame for selling will be 3- 4-hour shifts with the 1st shift from 9-1, the 2nd shift from 1-5, and the 3rd shift from 5-9. Don't be bashful and think "I don't know enough about bees". You have more knowledge than the public and there will be other beekeepers present to help. For every day an entry ticket is needed, one will be provided for you at the guest services office once you get to the fair. Use [SignUpGenius 2025](#) to sign up for the times that fit your schedule. If you have signed up this way in the past, you should have already received an email notification when this program became available. If you need assistance signing up to volunteer, contact Kristi by phone or text at 913-768-4961.

Kristi Sanderson, Special Events (Class) Chair



Funday 2026 Big Announcement!

Mark your calendars for Saturday, June 6th 2026 for our next Funday! Our first guest speaker has just agreed to be here, and it is none other than David Burns!

David started beekeeping in the early 1990s and started a beekeeping business several years later. In 2006 David began blogging and uploading beekeeping videos to YouTube. His YouTube channel has grown to around 154,000 subscribers. He also produces a weekly beekeeping podcast.

In 2020 David & Sheri were approached by Rockridge press to write the book "Backyard Beekeeping: Everything You Need to Know to Start Your First Hive."

He has produced a suite of online beekeeping courses that have become very popular among new beekeepers. David produces queens, nucs and packages. To make sure beekeepers had the best and latest scientific information on bees and beekeeping, David became a Certified Master Beekeeper through the Eastern Apicultural Society (2010). He also writes a weekly column for Bee Culture Magazine.

David teaches beekeeping workshops all year at their Training Center in Fairmount, IL. He also has a mentorship program known as Beeteam6, talks throughout the country at beekeeping conferences and is heard frequently on radio shows and podcasts.

NORTHEASTERN KS BEEKEEPERS' ASSOC. 2025 MEMBERSHIP APPLICATION

NAME _____

ADDRESS _____

CITY _____ STATE _____ ZIP+4 _____

PHONE _____ Email Address _____

I would like to receive the newsletter, *The Buzzer*, by email Yes _____ No _____

Membership Northeastern KS Beekeepers per year (July-Dec. \$12.50) \$25.00 _____

Additional family members wanting voting rights \$1.00 per person \$1.00 _____

Additional family member's name _____

(Youth Membership (18 years of age or under) \$12.50 _____

Membership for Kansas Honey Producers Association \$25.00 _____

American Bee Journal (discounted rate through association) 1 year \$29.75 _____

Bee Culture Magazine (or subscribe online at www.BeeCulture.com) 1 year \$40.00 _____

Scholarship / Military/Veteran's Appr. Donation _____

Total _____

Make checks payable to: NEKBA or Northeastern Kansas Beekeepers Assn.

Mail to: Robert Burns, 7601 W 54th Terr., Shawnee Mission, KS 66202 ph. 913-481-3504, rburnshoney@gmail.com

You may join, re-new, register, donate and pay online at www.nekba.org

MARKET PLACE

MENTORING-SWEET PRAIRIE HONEY

Need help with your hives? -Spring inspections, installing packages, making splits, queen evaluation, diagnosis of pests and diseases, mite monitoring and treatment, etc. I can help you with your beekeeping needs! I am a certified master beekeeper with 30+ years of beekeeping experience. I will leave you with a written course of action after our session at your hives. Call or text 913-768-4961 or email Kristi Sanderson at sandersonk09@gmail.com for pricing and appointment times.

BEEKEEPERS.COM

[Beekeepers.com](https://www.beekeepers.com) (Jordy's Honey Company) in Lenexa, KS. Beekeepers.com is your only local full-service beekeeping store. We carry a full line of Beekeeping Supplies, Protective Clothing, Bottles, Bee Packages, Nucs and Queens. Visit our website [Beekeepers.com](https://www.beekeepers.com), to view our entire line of beekeeping supplies. You can also shop in-person at our store in Lenexa. We ship queens directly to YOU! Order at [QueenBees.com](https://www.QueenBees.com). Queens available March - October. Our hours are Monday-Friday 9:00-4:30, Saturday 9:00-12:00. You can find our honey at The Overland Park Farmers Market. **Robert Hughes**, 14054 W 107th St, Lenexa, KS 66215, 913-681-5777 or [email Info@Beekeepers.com](mailto:email@Beekeepers.com) **NEW in 2025 We are offering a honey extraction room for rent.** <https://www.beekeepers.com/products/honey-extraction-room-rental>

COTTIN'S HARDWARE & RENTAL

Cottin's stocks a full line of beekeeping equipment year-round including items manufactured by Harvest Lane Honey, Little Giant, and Bug Baffler. Products include hives, supers, frames, foundations, extractors, tools, and protective apparel. We also stock a full line of Home Brewing Mead Making supplies. Located in Lawrence, KS at 1832 Massachusetts Street (South of Dillon's). We are open Monday - Friday 7:30 am - 6:00 pm, Saturday 8:00 am - 5:00 pm, and Sunday 10:00 am - 5:00 pm. You can follow us on Facebook, Instagram and Twitter. Call us at 785-843-2981 or email us at hardware@sunflower.com.

CB'S HONEY

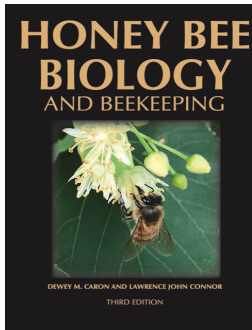
CB's Honey offers pure raw Kansas honey available in 5 gal buckets. Grafted queens and queen cells, and a limited number of nucs/packages. [CB's Honey | Facebook](#). Located just SE of Topeka. 4521 SE 61st Street, Berryton, KS 66409. Call or text Cheryl Burkhead at 785-224-9077 or cherylbhoney@gmail.com

CEDAR RIDGE BEES

5 Frame Nucs for Sale. We are your local Premier Bee Products Dealer specializing in plastic foundation made entirely in the U.S.A. We sell bucket feeders and other bee equipment. Call or text Philip Knaus at 785-581-4216 or contact us at cedarridgebeehives@gmail.com - Check out our bees and products at www.cedarridgebees.com Cedar Ridge Bees 585 N 500 Rd, Overbrook, KS 66524.

T CREEK BEES AND HONEY – Tecumseh/Berryton, KS

Tecumseh Creek winds its way through the home yard lending its name to the brand. Located between Lawrence and Topeka, T Creek offers 5-frame nucs, online honey sales, custom honey packing, wholesale delivery to the Topeka / Lawrence area, 5-gallon buckets of honey, and drop-shipping wholesale service to rural grocery stores and agritourism destinations. Visit www.tcreekbees.com Email: tcreekbees@gmail.com or find the bees on Facebook. Order 2025 5-frame nucs by visiting the website and completing the nuc order form. Owner: Tim Urich. LLC in the State of Kansas and licensed by Kansas Dept of Ag.



Honey Bee Biology and Beekeeping, Third Edition, Dewey M. Caron and Lawrence John Connor,

\$90 postage included. *This book should stay on the dashboard of every beekeeper's truck. It's that good, and that necessary. Kim Flottum, Bee Culture.* This comprehensive textbook easily replaces many beginner books while adding comprehensive details of bee biology essential to becoming a successful beekeeper and student of the honey bee. First released in 1999, *Honey Bee Biology and Beekeeping* is widely accepted as a major textbook of Apiculture (beekeeping). Beekeepers and bee clubs use it to teach other beekeepers. Universities use it to

teach college students bee biology and beekeeping. It concentrates on the 'why', 'how' and 'when' of beekeeping. It explains bee and beekeeping basics in a manner meaningful to people who lack an extensive background in biology. Yet it is not over-simplified and provides a meaningful source of beekeeping information for the informed beekeeper. The Third Edition has been carefully edited, updated and expanded to 480 pages. New chapters have been added, as have colorful new graphics and photographs. The Glossary has also been expanded. **Wicwas Press LLC Kalamazoo, MI 49001 - www.wicwas.com**

The Association does not endorse nor evaluate the advertisements, products, or services offered in the Buzzer.

SUBSCRIBE TO A MONTHLY BEE MAGAZINE. STAY INFORMED.

[Bee Culture Magazine \(link\)](#)

[American Bee Journal \(link\)](#)

Use the links to subscribe directly...annual subscription rates under \$6 per month for both! This is fantastic information right at your fingertips. As part of your beekeeping experience, it's important to be up to date with the trends in bee biology, honey processing, the industry, and much more!

3 DAY EXTRACTOR RENTAL

- ✓ Uncapping Tank
- ✓ Uncapping Pick
- ✓ Serrated Knife
- ✓ Bucket with Gate
- ✓ Double Sieve

BOOK YOURS AT BEEKEEPERS.COM

Northeastern Kansas Beekeepers Association
Robert Burns, Treasurer
7601 W 54th Terr
Shawnee Mission, KS 66202-1129

Address Service Requested

Meeting

Monday, Aug 18th, 2025 - Douglas County Fairgrounds

The Northeastern Kansas Beekeepers' Association

Membership is open to anyone interested in bees or bee culture. Dues are \$25.00 per calendar year (December 31-December 31) for the first in the family joining. Those joining in July or later in the year may pay \$12.50 for ½ year. Additional members of a family wanting voting privileges shall be assessed dues at \$1.00 per year. Youth memberships (18 years of age and younger) are \$12.50 per year. Please submit new memberships and renewals to the treasurer or on-line at www.nekba.org.

The Bee Buzzer is the official publication of the Northeastern Kansas Beekeepers' Association, Inc. and is published monthly. Commercial ads are accepted in the newsletter for a fee; non-commercial ads by paid members are accepted & are free.

The library of the association is free to all members. Books may be checked out at the meetings and kept for a period of 30 days. The bee publications, *The American Bee Journal* and *Bee Culture* can be subscribed to through the treasurer or on-line. The *American Bee Journal* is offered at a discount through the Association only.

The Association meets each month, generally on the third Monday at 7:00 p.m. except during the months of January and July. This is a non-profit organization; elected officers serve without pay. Everyone is invited to attend the meetings. Check *The Bee Buzzer* or website at www.nekba.org each month for the actual date, time, and location. If the weather is bad, call an officer or check the website to find out if the meeting will be held or cancelled.

2025 Officers

President: Cheryl Burkhead , 4521 SE 61st St., Berryton, KS 66409 cbfritz@aol.com	785-224-9077
1st VP (Program Chair): Matt Brandes , 4741 Highway K 68, Wellsville, KS 66092 matthew@n523rv.com	913-706-3087
2nd VP (Librarian): Michael Hewitt , 9221 SE Berryton Rd, Berryton, KS 66409 garlicranch69@gmail.com	785-230-0827
3rd VP (Honey Plants): Jo Patrick , 611 E Sheridan St., Olathe, KS 66061 brian-patrick@sbcglobal.net	913-645-8947
Secretary: Elaine Ellenz , 17650 W 113 th St., Olathe, KS 66061 elaineellenz@gmail.com	913-515-1607
Treasurer: Robert Burns , 7601 W 54 th Terr., Shawnee Mission, KS 66202 rburnshoney@gmail.com	913-481-3504
Youth Scholarship Chair: Jon Chitwood , 27196 W 223 rd St, Spring Hill, KS 66083 jwchitwood@gmail.com	913-738-4585
Military/Veteran Appr. Liaison: Buck Bradley , 11 E 900 Rd., Baldwin City, KS 66006 buckusmc00@hotmail.com	785-248-1005
Editor: Tim Marshall , 4736 Halsey St., Shawnee, KS 66216 flyinmonk@yahoo.com	816-392-6854
Special Events Coordinators:	
(Classes): Kristi Sanderson , 1252 E Frontier Ln., Olathe, KS 66062 sandersonk09@gmail.com	913-768-4961
(Funday): Joli Winer , 19201 S Clare Rd, Spring Hill, KS 66083 heartlandhoneyks@gmail.com	913-593-3562
Webmaster: Robert Burns , 7601 W 54 th Terr., Shawnee Mission, KS 66202 rburnshoney@gmail.com	913-481-3504

Visit on-line at www.nekba.org. Save time. Join, re-new, or register.