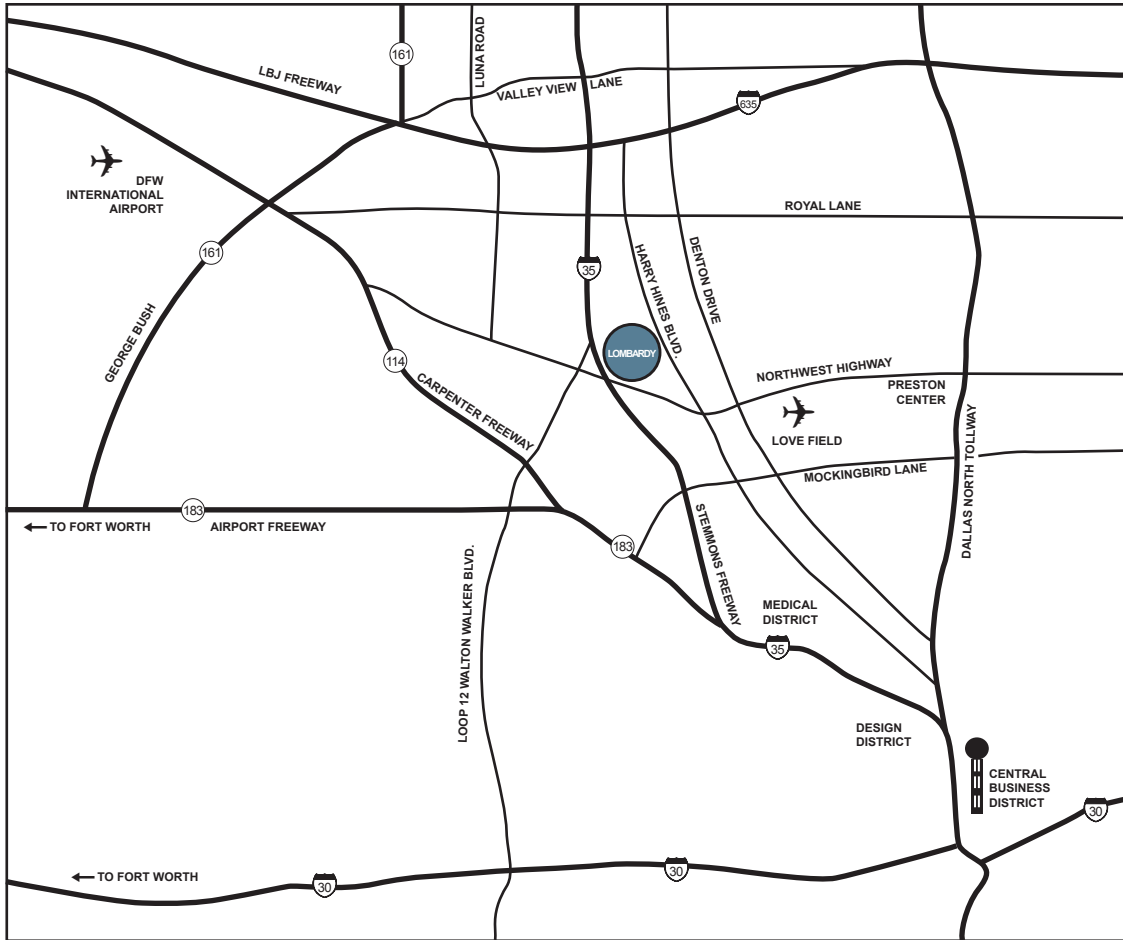


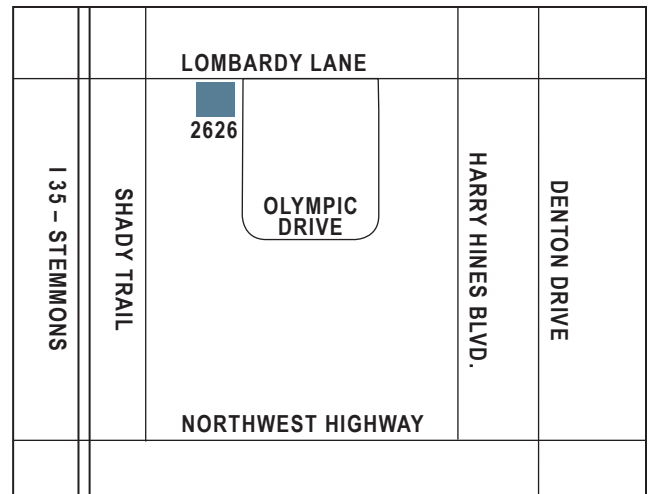
FOR LEASE

2626 LOMBARDY LANE

SUITE 105
DALLAS, TEXAS



- 9,648 Square Foot Office-Flex Space Available
- Total Building is 19,017 Square Feet
- Tilt Wall Structure
- 12' Clear Height
- 56 Total Parking Spaces (2.95/1,000 SF)
- Three (3) 10'x10' Grade Level Doors
- All Concrete Paving
- Fenced Parking/Outside Storage
- Approximate Distances
 - Love Field Terminal 5.5 Miles
 - CBD 9.8 Miles
 - Medical District 6.3 Miles
 - Preston Center 6.5 Miles
 - D/FW International Terminal 13.3 miles



SEE PLAN ON REVERSE

FOR INFORMATION CALL GREGG HAMILL

214-808-0020

HAMILL COMMERCIAL, LLC

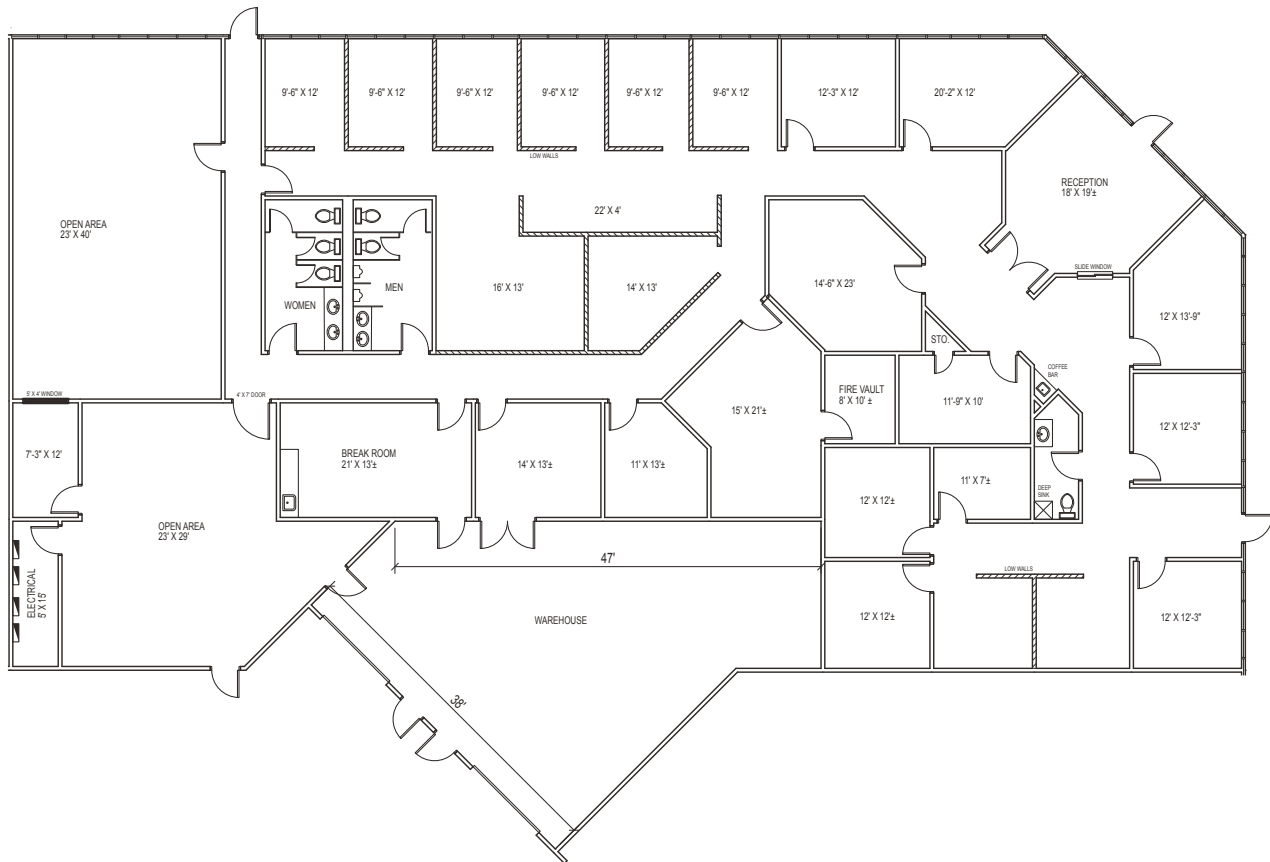
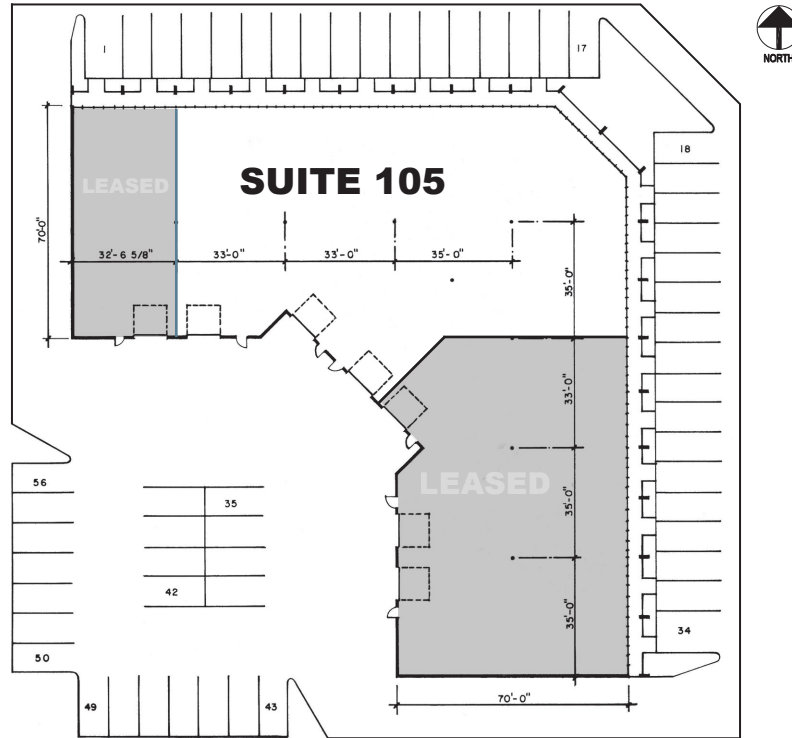
10711 PRESTON ROAD, SUITE 200, DALLAS, TEXAS 75230

gregg@hamillcommercial.com | www.hamillcommercial.com

FOR LEASE

2626 LOMBARDY LANE

SUITE 105
DALLAS, TEXAS



Disclaimer: This material has been prepared by Hamill Commercial, LLC ("Broker") from sources deemed to be reliable and is for general information only. Broker does not guarantee, warrant or represent that the information contained in this document is correct. Any interested party should undertake their own inquiries as to the accuracy of the information. Broker disclaims unequivocally all inferred or implied terms, conditions and warranties arising out of this document and excludes all liability for loss and damages arising there from.