

# L.B.J.&C Algood Head Start

## 2025-2026 Daily Schedule Classroom A



7:00 a.m.-8:00 a.m.

8:00 a.m.-8:15 a.m.

8:15 a.m.-8:30 a.m.

8:30 a.m.-9:00 a.m.

9:00 a.m.-10:15 a.m.

10:15 a.m.-11:05 a.m.

11:05 a.m.- 11:30 a.m.

11:30 a.m.-12:00 p.m.

12:00 p.m.-12:15 p.m.

12:15 p.m.-12:30 p.m.

12:30 p.m.-1:45 p.m.

1:45 p.m.-2:00 p.m.

2:00 p.m.-2:15 p.m.

2:15 p.m.-2:30 p.m.

### Teacher Planning Time

Greet Parents and Children/ Free Choice  
Activities/Individualization

Large Group Time/ Preparation For  
Family Style Meal Service

### Breakfast

Clean-Up/Free Choice  
Activities/Individualization/Brush  
Teeth

Outdoor Play (Gross Motor  
Activities)

Transition/Large Group Time/Gross Motor  
Activities/Preparation For Family Style Meal  
Service

### Lunch

Clean-up/Brush Teeth/Large  
Group Time

Small Group Activities

Transition to Rest Time/Rest Time

Transition to Snack

### Snack

Clean-up/Departure

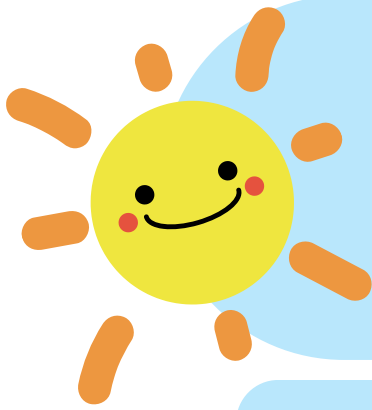
## Inclement Weather Schedule:



Gross Motor Moderate to Vigorous Physical  
Activities in the Big Room or Structure Gross  
Motor Activities in Classroom



Revised 7/25



# L.B.J.&C Algood Head Start

## 2025-2026 Daily Schedule Classroom B



7:00 a.m.-8:00 a.m.

8:00 a.m.-8:15 a.m.

8:15 a.m.-8:30 a.m.

8:30 a.m.-9:00 a.m.

9:00 a.m.-10:15 a.m.

10:15 a.m.-11:05 a.m.

11:05 a.m.- 11:30 a.m.

11:30 a.m.-12:00 p.m.

12:00 p.m.-12:15 p.m.

12:15 p.m.-12:30 p.m.

12:30 p.m.-1:45 p.m.

1:45 p.m.-2:00 p.m.

2:00 p.m.-2:15 p.m.

2:15 p.m.-2:30 p.m.

### Teacher Planning Time

Greet Parents and Children/ Free Choice  
Activities/Individualization

Large Group Time/ Preparation For  
Family Style Meal Service

### Breakfast

Clean-Up/Free Choice  
Activities/Individualization/Brush  
Teeth

Outdoor Play (Gross Motor  
Activities)

Transition/Large Group Time/Gross Motor  
Activities/Preparation For Family Style Meal  
Service

### Lunch

Clean-up/Brush Teeth/Large  
Group Time

Small Group Activities

Transition to Rest Time/Rest Time

Transition to Snack

### Snack

Clean-up/Departure

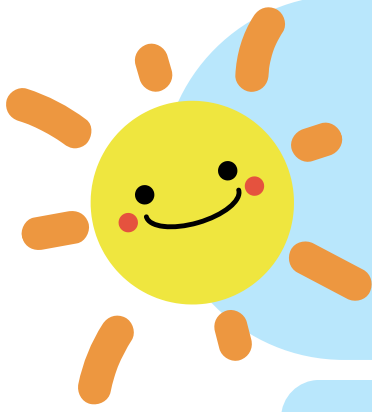
## Inclement Weather Schedule:



Gross Motor Moderate to Vigorous Physical  
Activities in the Big Room or Structure Gross  
Motor Activities in Classroom



Revised 7/25



# L.B.J.&C Algood Head Start 2025-2026 Daily Schedule Classroom C

7:00 a.m.-8:00 a.m.	Teacher Planning Time
8:00 a.m.-8:15 a.m.	Greet Parents and Children/ Free Choice Activities/Individualization
8:15 a.m.-8:30 a.m.	Large Group Time/ Preparation For Family Style Meal Service
8:30 a.m.-9:00 a.m.	<b>Breakfast</b>
9:00 a.m.-9:15 a.m.	Clean Up/Large Group
9:15 a.m.-10:15 a.m.	Outdoor Play (Gross Motor Activities)
10:15 a.m.-11:15 a.m.	Free Choice Activities/Individualization/Brush Teeth
11:15 a.m.- 11:30 a.m.	Transition/Large Group Time/Gross Motor Activities/Preparation For Family Style Meal Service
11:30 a.m.-12:00 p.m.	<b>Lunch</b>
12:00 p.m.-12:15 p.m.	Clean-up/Brush Teeth/Large Group Time
12:15 p.m.-12:30 p.m.	Small Group Activities
12:30 p.m.-1:45 p.m.	Transition to Rest Time/Rest Time
1:45 p.m.-2:00 p.m.	Transition to Snack
2:00 p.m.-2:15 p.m.	<b>Snack</b>
2:15 p.m.-2:30 p.m.	Clean-up/Departure

## Outdoor Play Schedule:

Class C: 9:15 a.m- 9:45 a.m- Structured Gross Motor Activities on the Grassy Area  
 Class D: 9:15 a.m- 9:45 a.m- Gross Motor on the Play Structure Area.  
 Class E: 9:15 a.m- 9:45 a.m- Gross Motor on the Play Structure Area.  
 Class C: 9:45 a.m- 10:15 a.m- Gross Motor on the Play Structure Area.  
 Class D: 9:45 a.m- 10:15 a.m- Structured Gross Motor Activities on the Grassy Area.  
 Class E: Structured Gross Motor Activities on the Grassy Area.

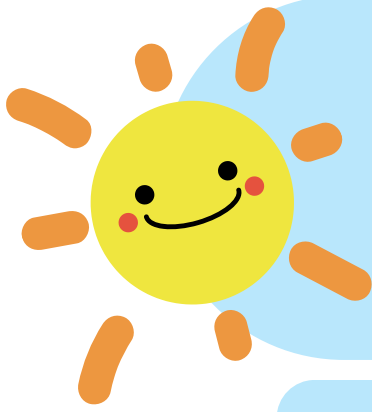


## Inclement weather schedule:



On days with inclement weather, Classrooms C, D, and E will rotate the Big Room use with their classroom to ensure each class has access to indoor gross motor activities.

Revised 7/25



# L.B.J.&C Algood Head Start 2025-2026 Daily Schedule Classroom D

7:00 a.m.-8:00 a.m.	Teacher Planning Time
8:00 a.m.-8:15 a.m.	Greet Parents and Children/ Free Choice Activities/Individualization
8:15 a.m.-8:30 a.m.	Large Group Time/ Preparation For Family Style Meal Service
8:30 a.m.-9:00 a.m.	<b>Breakfast</b>
9:00 a.m.-9:15 a.m.	<b>Clean Up/Large Group</b>
9:15 a.m.-10:15 a.m.	Outdoor Play (Gross Motor Activities)
10:15 a.m.-11:15 a.m.	Free Choice Activities/Individualization/Brush Teeth
11:15 a.m.-11:30 a.m.	Transition/Large Group Time/Gross Motor Activities/Preparation For Family Style Meal Service
11:30 a.m.-12:00 p.m.	<b>Lunch</b>
12:00 p.m.-12:15 p.m.	<b>Clean-up/Brush Teeth/Large Group Time</b>
12:15 p.m.-12:30 p.m.	<b>Small Group Activities</b>
12:30 p.m.-1:45 p.m.	Transition to Rest Time/Rest Time
1:45 p.m.-2:00 p.m.	Transition to Snack
2:00 p.m.-2:15 p.m.	<b>Snack</b>
2:15 p.m.-2:30 p.m.	Clean-up/Departure

## Outdoor Play Schedule:

Class C: 9:15 a.m- 9:45 a.m- Structured Gross Motor Activities on the Grassy Area  
Class D: 9:15 a.m- 9:45 a.m- Gross Motor on the Play Structure Area.  
Class E: 9:15 a.m- 9:45 a.m- Gross Motor on the Play Structure Area.  
Class C: 9:45 a.m- 10:15 a.m- Gross Motor on the Play Structure Area.  
Class D: 9:45 a.m- 10:15 a.m- Structured Gross Motor Activities on the Grassy Area.  
Class E: Structured Gross Motor Activities on the Grassy Area.

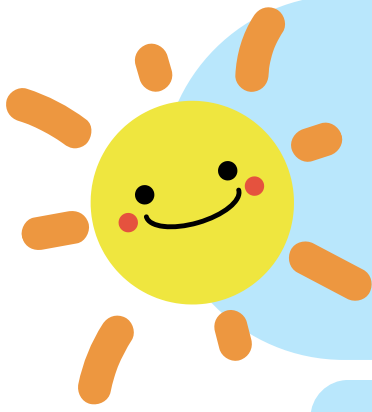


## Inclement weather schedule:



On days with inclement weather, Classrooms C, D, and E will rotate the Big Room use with their classroom to ensure each class has access to indoor gross motor activities.

Revised 7/25



# L.B.J.&C Algood Head Start 2025-2026 Daily Schedule Classroom E

7:00 a.m.-8:00 a.m.	Teacher Planning Time
8:00 a.m.-8:15 a.m.	Greet Parents and Children/ Free Choice Activities/Individualization
8:15 a.m.-8:30 a.m.	Large Group Time/ Preparation For Family Style Meal Service
8:30 a.m.-9:00 a.m.	<b>Breakfast</b>
9:00 a.m.-9:15 a.m.	Clean Up/Large Group
9:15 a.m.-10:15 a.m.	Outdoor Play (Gross Motor Activities)
10:15 a.m.-11:15 a.m.	Free Choice Activities/Individualization/Brush Teeth
11:15 a.m.-11:30 a.m.	Transition/Large Group Time/Gross Motor Activities/Preparation For Family Style Meal Service
11:30 a.m.-12:00 p.m.	<b>Lunch</b>
12:00 p.m.-12:15 p.m.	Clean-up/Brush Teeth/Large Group Time
12:15 p.m.-12:30 p.m.	Small Group Activities
12:30 p.m.-1:45 p.m.	Transition to Rest Time/Rest Time
1:45 p.m.-2:00 p.m.	Transition to Snack
2:00 p.m.-2:15 p.m.	Snack
2:15 p.m.-2:30 p.m.	Clean-up/Departure

## Outdoor Play Schedule:

Class C: 9:15 a.m.- 9:45 a.m- Structured Gross Motor Activities on the Grassy Area  
Class D: 9:15 a.m- 9:45 a.m- Gross Motor on the Play Structure Area.  
Class E: 9:15 a.m- 9:45 a.m- Gross Motor on the Play Structure Area.  
Class C: 9:45 a.m- 10:15 a.m- Gross Motor on the Play Structure Area.  
Class D: 9:45 a.m- 10:15 a.m- Structured Gross Motor Activities on the Grassy Area.  
Class E: Structured Gross Motor Activities on the Grassy Area.



## Inclement weather schedule:

On days with inclement weather, Classrooms C,D, and E will rotate the Big Room use with their classroom to ensure each class has access to indoor gross motor activities.



Revised 7/25