
BAY DELTA CONSERVATION PLAN



NORTH DELTA WATER AGENCY BOARD OF DIRECTORS

B.G. Heiland, P.E., Department of Water Resources

February 4, 2015

UPDATE ON STATUS OF THE BDCP PARTIALLY RECIRCULATED EIR/ SUPPLEMENTAL EIS (REIR/SEIS)

BDCP STATUS



- Preparing Partial Recirculation of Draft EIR/ Supplemental Draft EIS (REIR/SEIS), Draft BDCP, and Draft Implementing Agreement
 - Including changes to tunnel alignment and facilities
 - Addressing significant concerns identified during the initial comment period

CEQA/NEPA

- ✓ **NEPA: Triggers for Supplement to Draft EIS (SEIS) include:**
 - Substantial changes to proposed action
 - Significant new circumstances
 - Significant new information

- ✓ **CEQA: Triggers for Recirculation of Revised Draft EIR (REIR) include:**
 - New significant impacts
 - Substantial increase in impact severity

REIR/SEIR DETAILS

- ✓ **Proposed Conveyance Facility Refinements for State Proposal:**
 - Reduce construction impacts on Delta communities
 - Improve the long-term reliability and operation of the proposed tunnels

- ✓ **Revision Topics Include:**
 - Several Resource Areas (AQ, WQ, Traffic, Noise, Aquatic Species)
 - Project Description
 - Alternatives
 - Cumulative Impacts
 - Geotechnical Investigations
 - Environmental Commitments
 - Modeling

IMPORTANT EIR/EIS CHAPTERS AFFECTED

Chapter	Proposed Updates in RDEIR/SDEIS
3: Description of Alternatives	<ul style="list-style-type: none">• Update CM1 design, construction and operations• Revised Plan/IA consistency
5, 6 and 8: Water Supply, Surface Water and Water Quality	<ul style="list-style-type: none">• Revise Mitigation Measures for Water Quality• Revise Contaminants Analysis
11: Fish and Aquatic Resources	<ul style="list-style-type: none">• Revised Plan/IA consistency• Revise impact determinations
12: Terrestrial Resources	<ul style="list-style-type: none">• Update CM1 design and construction impacts

IMPORTANT EIR/EIS CHAPTERS AFFECTED

Chapter	Proposed Updates in Recirculated RDEIR/SDEIS
13,14: Land Use, Agricultural Resources	<ul style="list-style-type: none">• Update CM1 design and construction impacts
15,17: Recreation, Aesthetics	<ul style="list-style-type: none">• Update CM1 design and construction impacts
19,22 and 23: Transportation, Air Quality, Noise	<ul style="list-style-type: none">• Update CM1 design and construction impacts• Update Mitigation Measures
Other Chapters (less substantive changes)	<ul style="list-style-type: none">• Update CM1 design and construction impacts
Summary Comparison of Alternatives	<ul style="list-style-type: none">• Executive summary, resource chapters

OVERVIEW OF PROPOSED CONVEYANCE FACILITY REFINEMENTS FOR STATE PROPOSAL

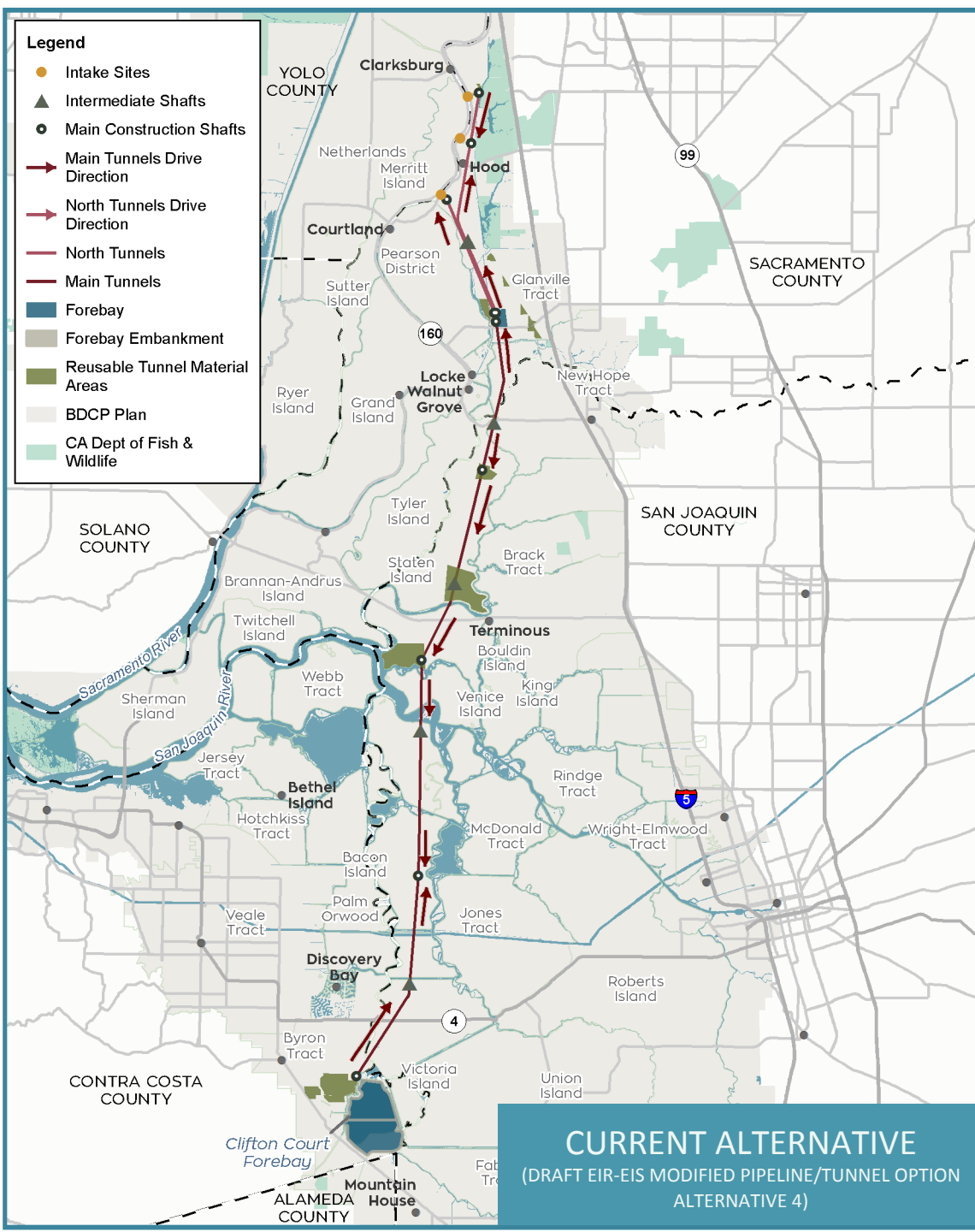
PROPOSED CM1 CHANGES FOR ALTERNATIVE 4

- ✓ Reduce construction impacts on Delta communities
- ✓ Increased use of DWR-owned property
- ✓ Improve tunnel operation and maintenance
- ✓ Standardize tunnel segment design
- ✓ Improve long-term performance of the tunnels
- ✓ Reduce power requirements

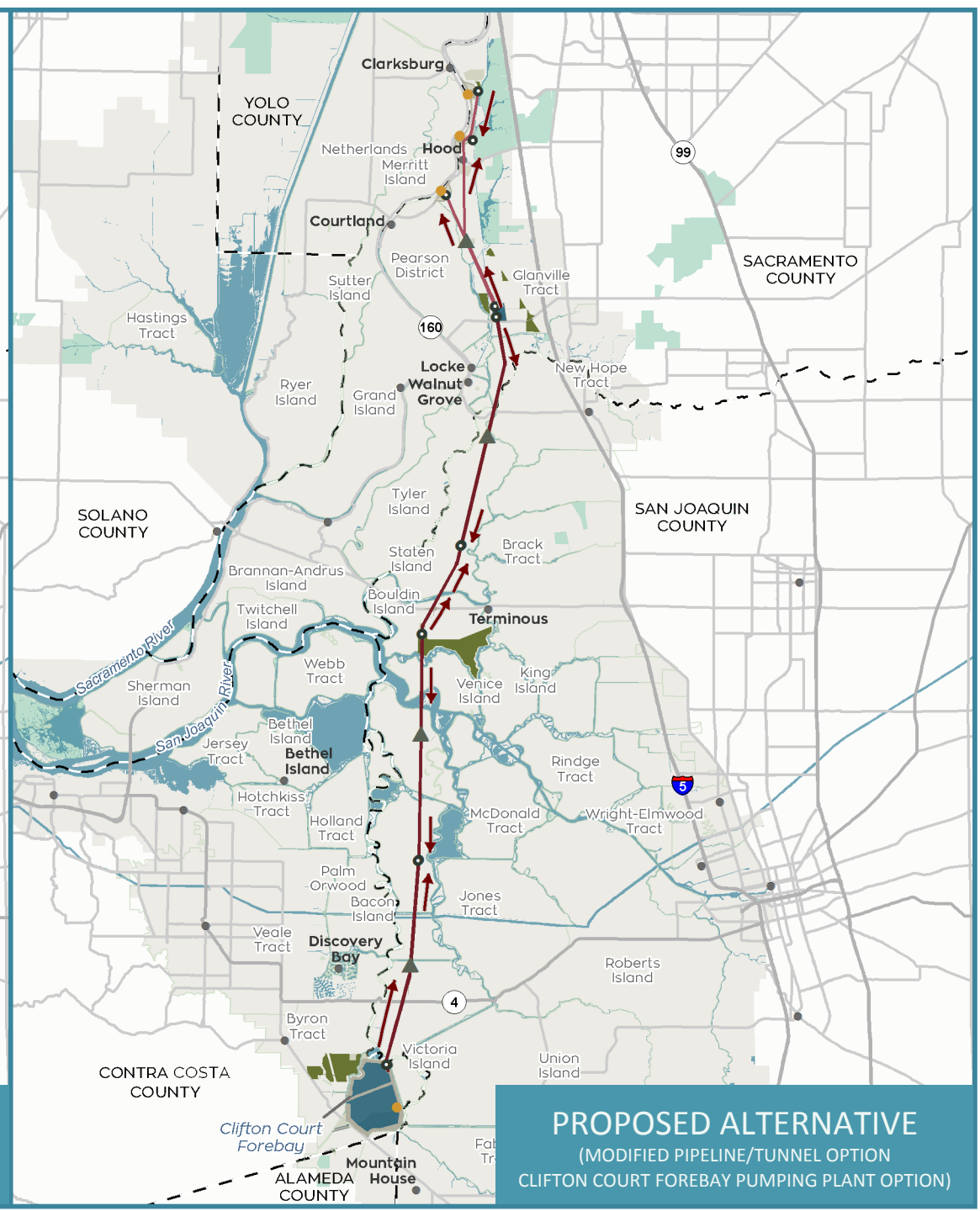
PROPOSED CM1 CHANGES FOR ALTERNATIVE 4

- ✓ Eliminating pumping plants at north Delta intakes
- ✓ Consolidating pumping plants at Clifton Court Forebay (CCF) and reconfiguring CCF
- ✓ Reducing project impacts on Staten Island
- ✓ Changing Reusable Tunnel Material locations
- ✓ Augmenting CM1 operations description and adaptive management
- ✓ Revising construction assumptions
- ✓ Adding geotechnical investigation analysis

- Legend**
- Intake Sites
 - ▲ Intermediate Shafts
 - Main Construction Shafts
 - ➔ Main Tunnels Drive Direction
 - ➔ North Tunnels Drive Direction
 - North Tunnels
 - Main Tunnels
 - ▭ Forebay
 - ▭ Forebay Embankment
 - ▭ Reusable Tunnel Material Areas
 - ▭ BDCP Plan
 - ▭ CA Dept of Fish & Wildlife



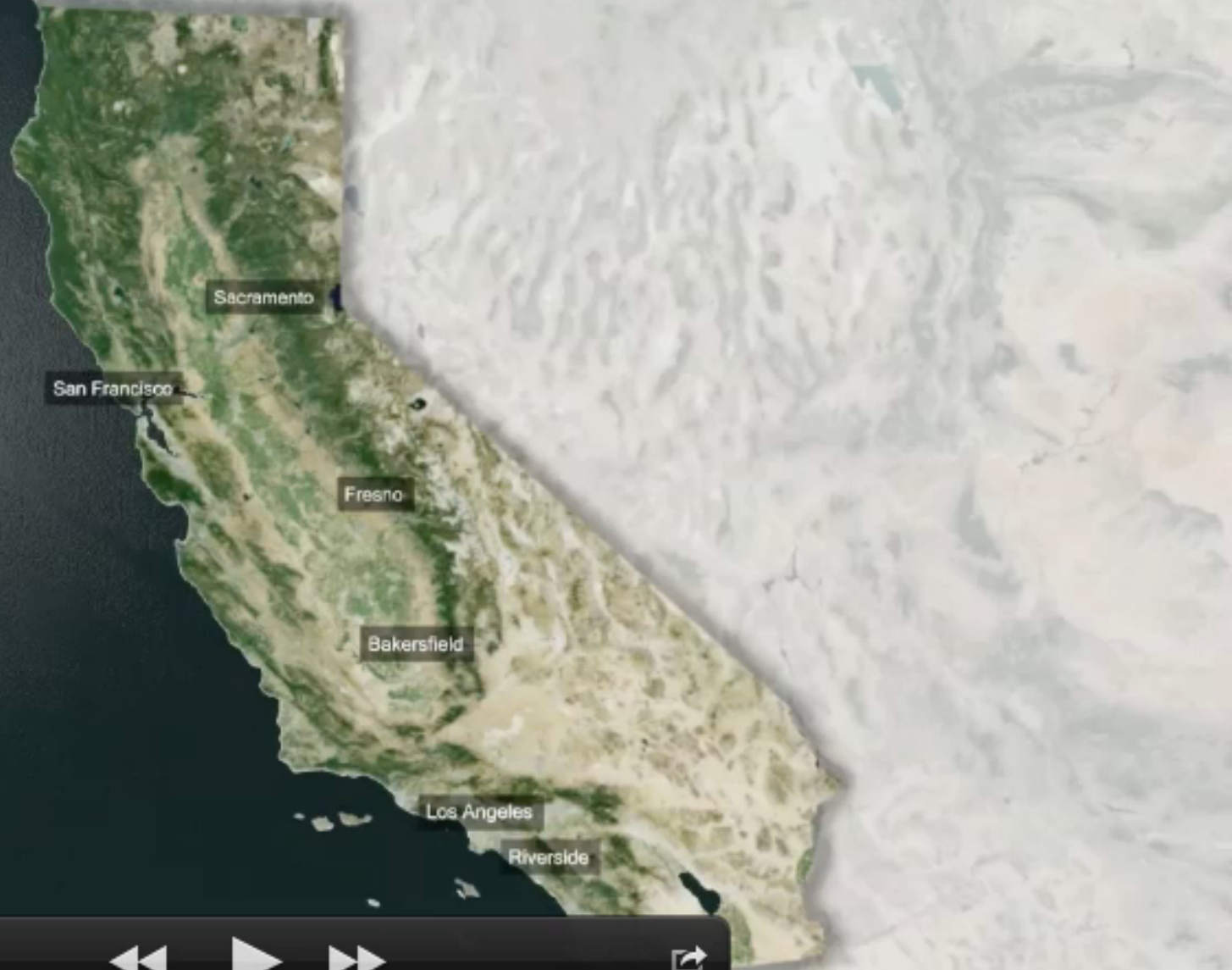
CURRENT ALTERNATIVE
 (DRAFT EIR-EIS MODIFIED PIPELINE/TUNNEL OPTION
 ALTERNATIVE 4)



PROPOSED ALTERNATIVE
 (MODIFIED PIPELINE/TUNNEL OPTION
 CLIFTON COURT FOREBAY PUMPING PLANT OPTION)

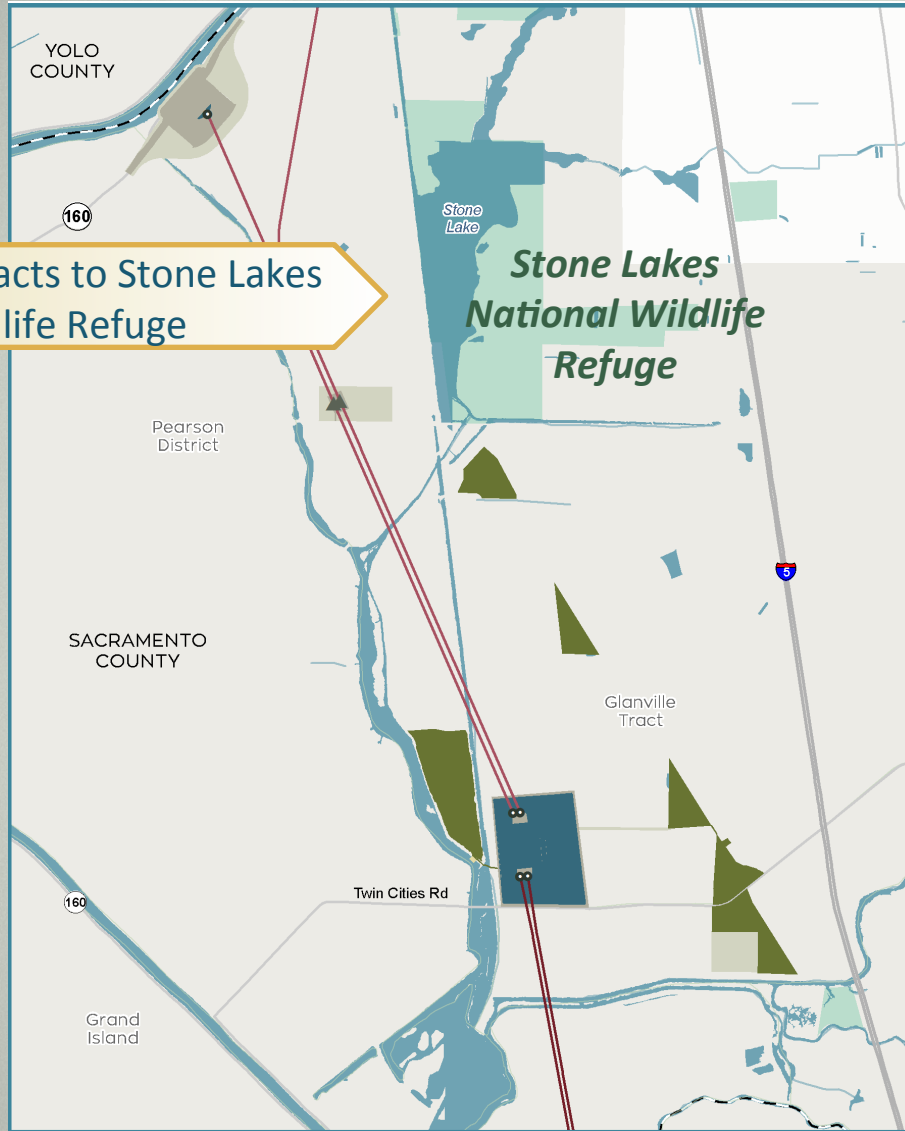
INTAKE #3 ANIMATION

B&V_MWD_video_01_9-19



00:00 -03:23

ENGINEERING IMPROVEMENTS



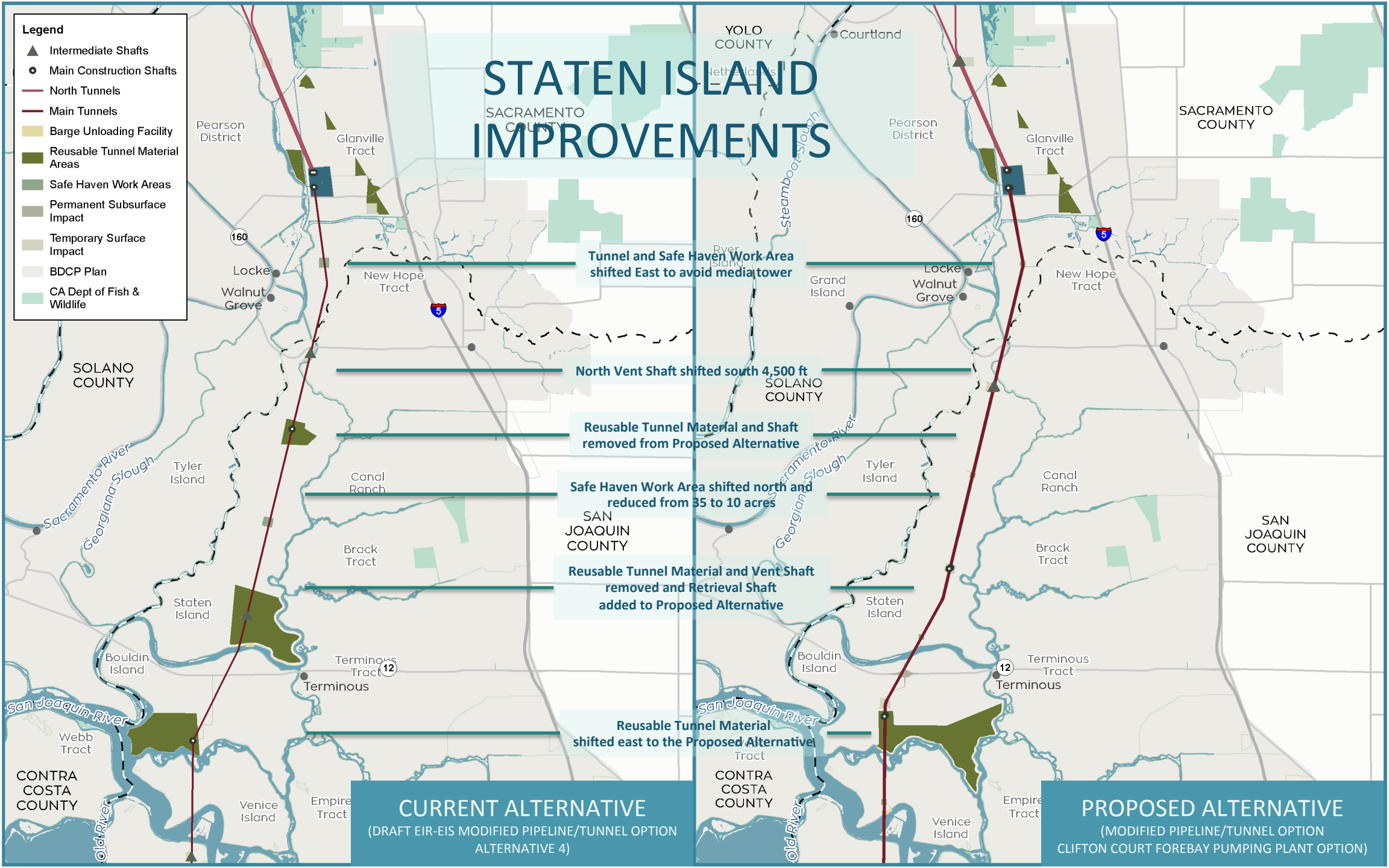
Reduce impacts to Stone Lakes Wildlife Refuge

- ✓ Reduce internal tunnel pressure
- ✓ More standard segment design
- ✓ Eliminate pumping under certain river conditions
- ✓ Reduce use of permanent power lines



- Legend**
- ▲ Intermediate Shafts
 - Main Construction Shafts
 - North Tunnels
 - Main Tunnels
 - Barge Unloading Facility
 - Reusable Tunnel Material Areas
 - Safe Haven Work Areas
 - Permanent Subsurface Impact
 - Temporary Surface Impact
 - BDCP Plan
 - CA Dept of Fish & Wildlife

STATEN ISLAND IMPROVEMENTS



Tunnel and Safe Haven Work Area shifted East to avoid media tower

North Vent Shaft shifted south 4,500 ft

Reusable Tunnel Material and Shaft removed from Proposed Alternative

Safe Haven Work Area shifted north and reduced from 35 to 10 acres

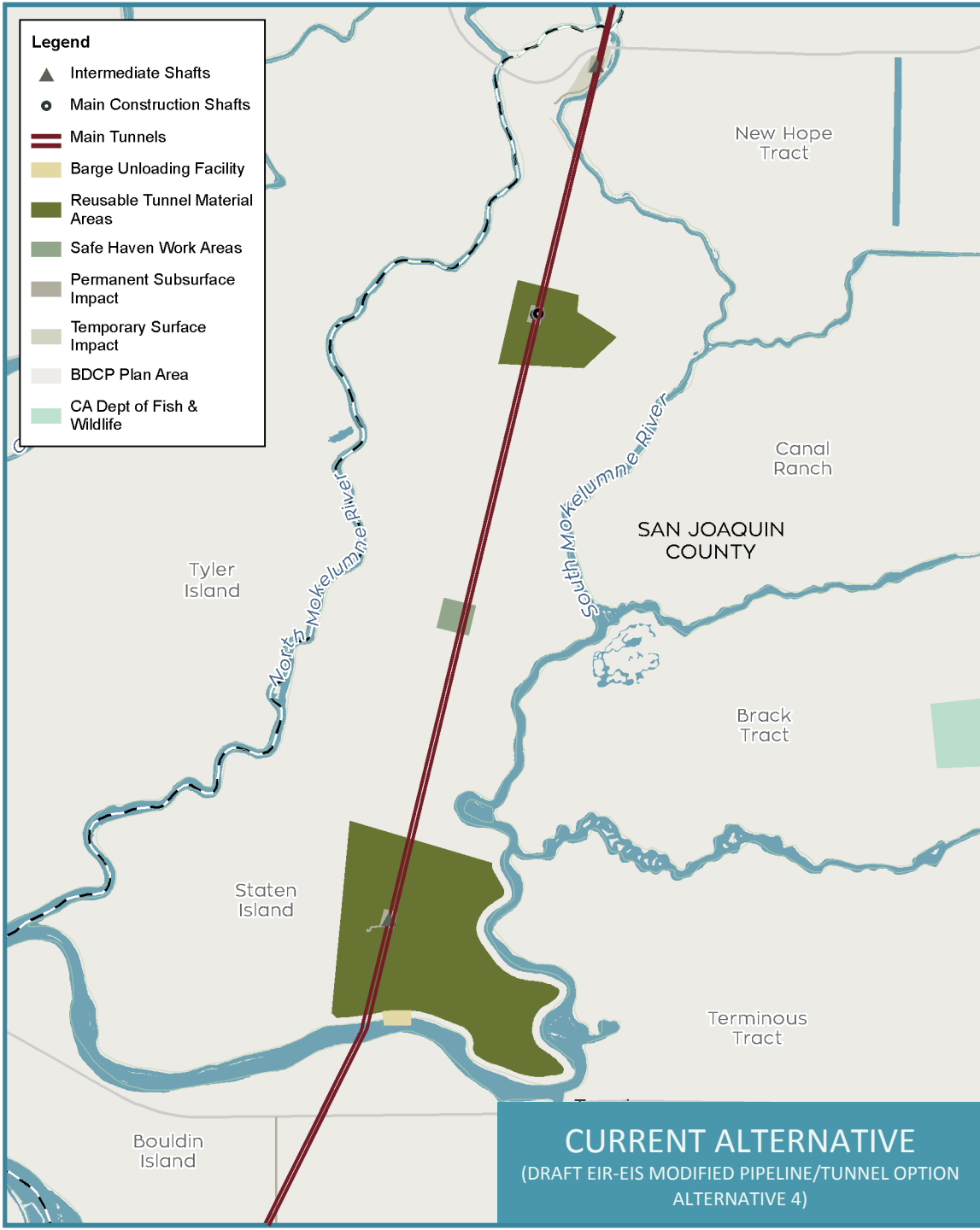
Reusable Tunnel Material and Vent Shaft removed and Retrieval Shaft added to Proposed Alternative

Reusable Tunnel Material shifted east to the Proposed Alternative

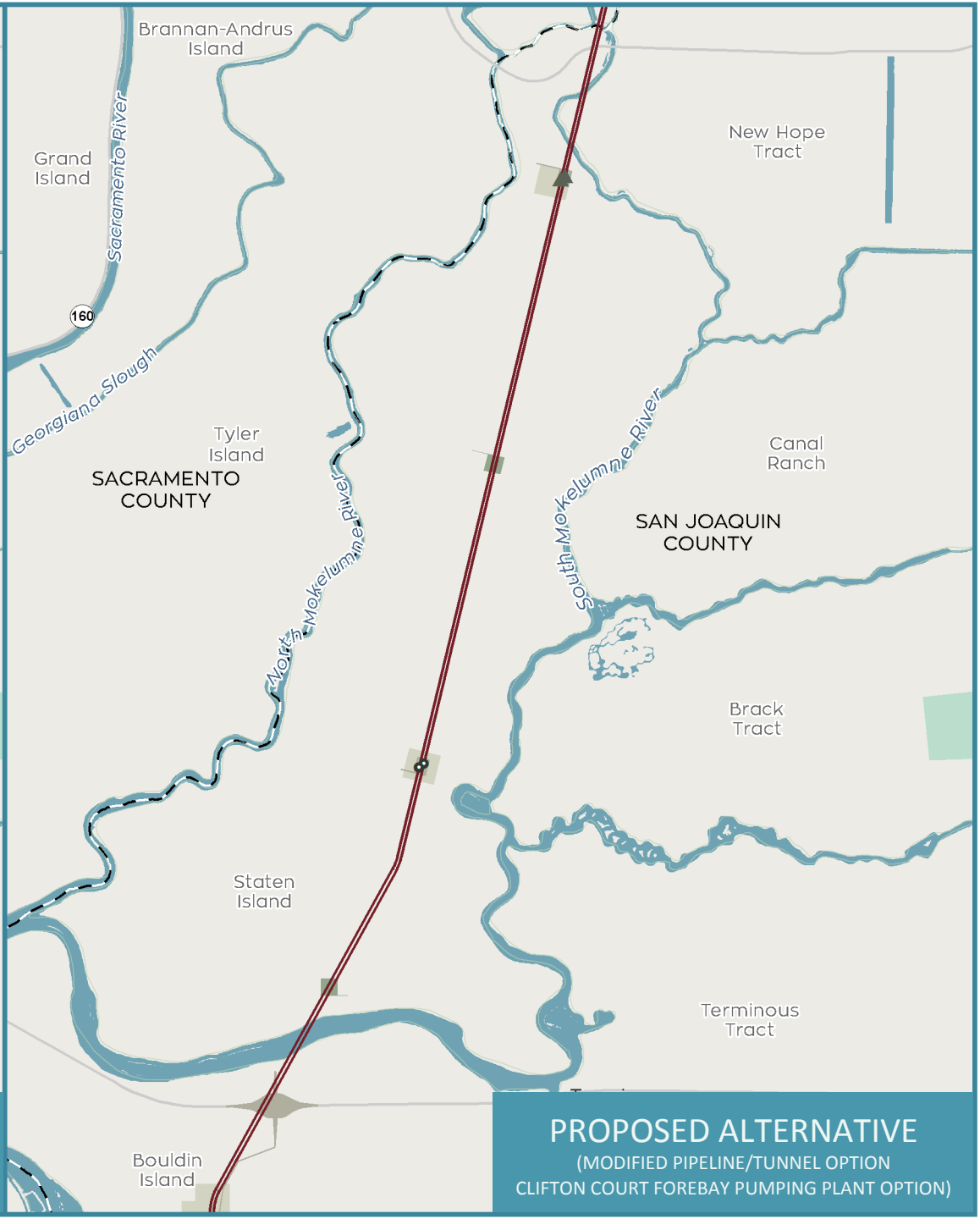
CURRENT ALTERNATIVE
(DRAFT EIR-EIS MODIFIED PIPELINE/TUNNEL OPTION ALTERNATIVE 4)

PROPOSED ALTERNATIVE
(MODIFIED PIPELINE/TUNNEL OPTION CLIFTON COURT FOREBAY PUMPING PLANT OPTION)

- Legend**
- ▲ Intermediate Shafts
 - Main Construction Shafts
 - ▬ Main Tunnels
 - Barge Unloading Facility
 - Reusable Tunnel Material Areas
 - Safe Haven Work Areas
 - Permanent Subsurface Impact
 - Temporary Surface Impact
 - BDCP Plan Area
 - CA Dept of Fish & Wildlife



CURRENT ALTERNATIVE
 (DRAFT EIR-EIS MODIFIED PIPELINE/TUNNEL OPTION
 ALTERNATIVE 4)

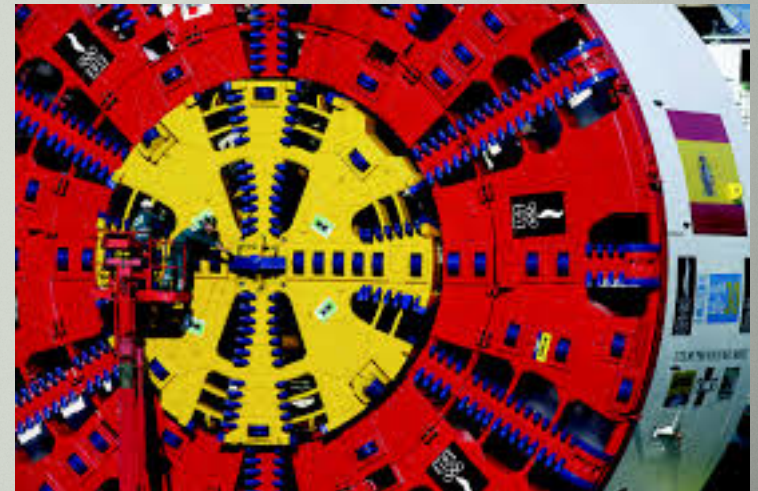
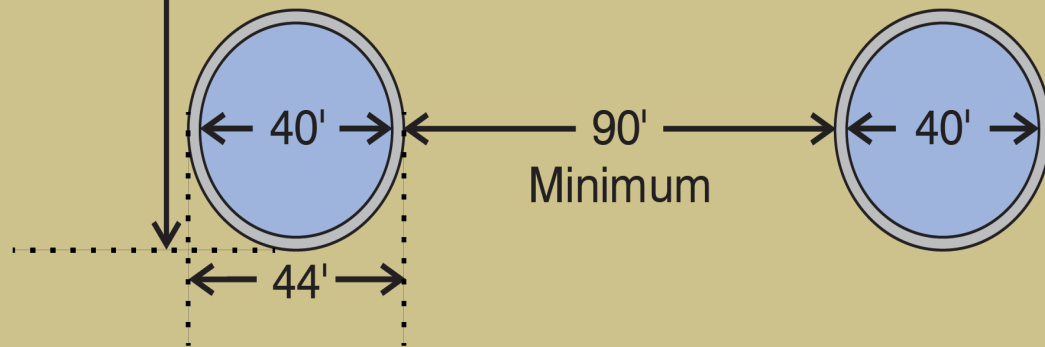


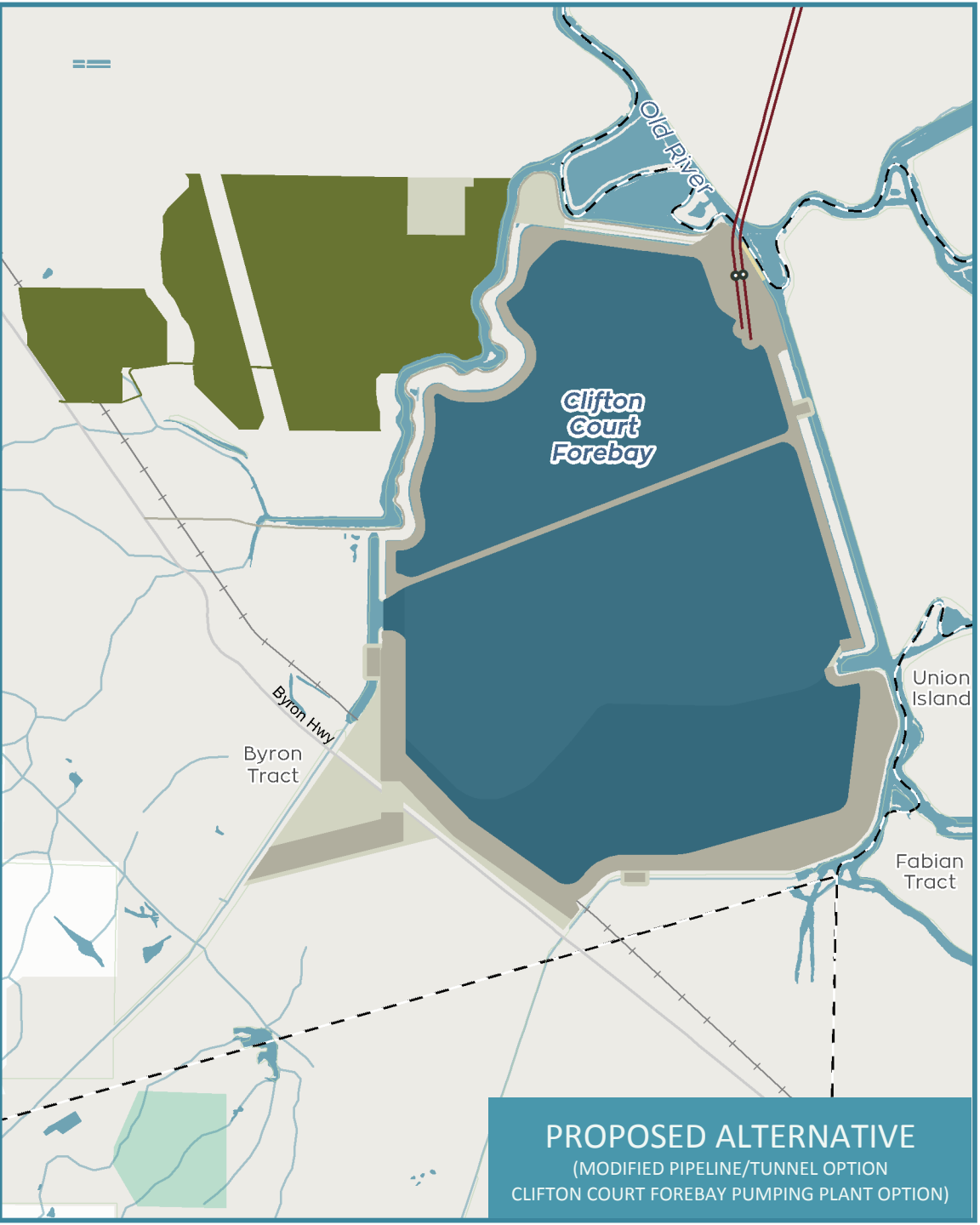
PROPOSED ALTERNATIVE
 (MODIFIED PIPELINE/TUNNEL OPTION
 CLIFTON COURT FOREBAY PUMPING PLANT OPTION)



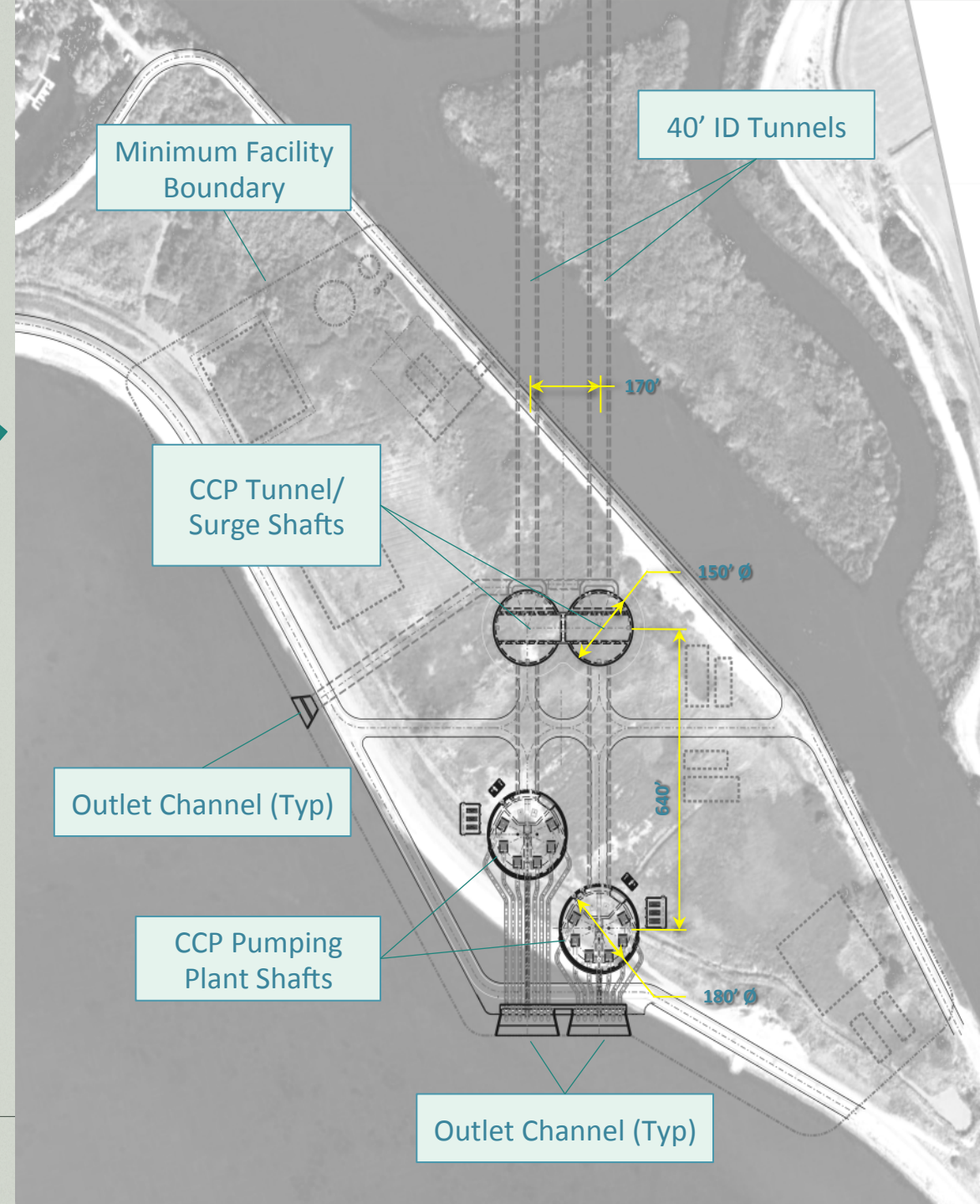
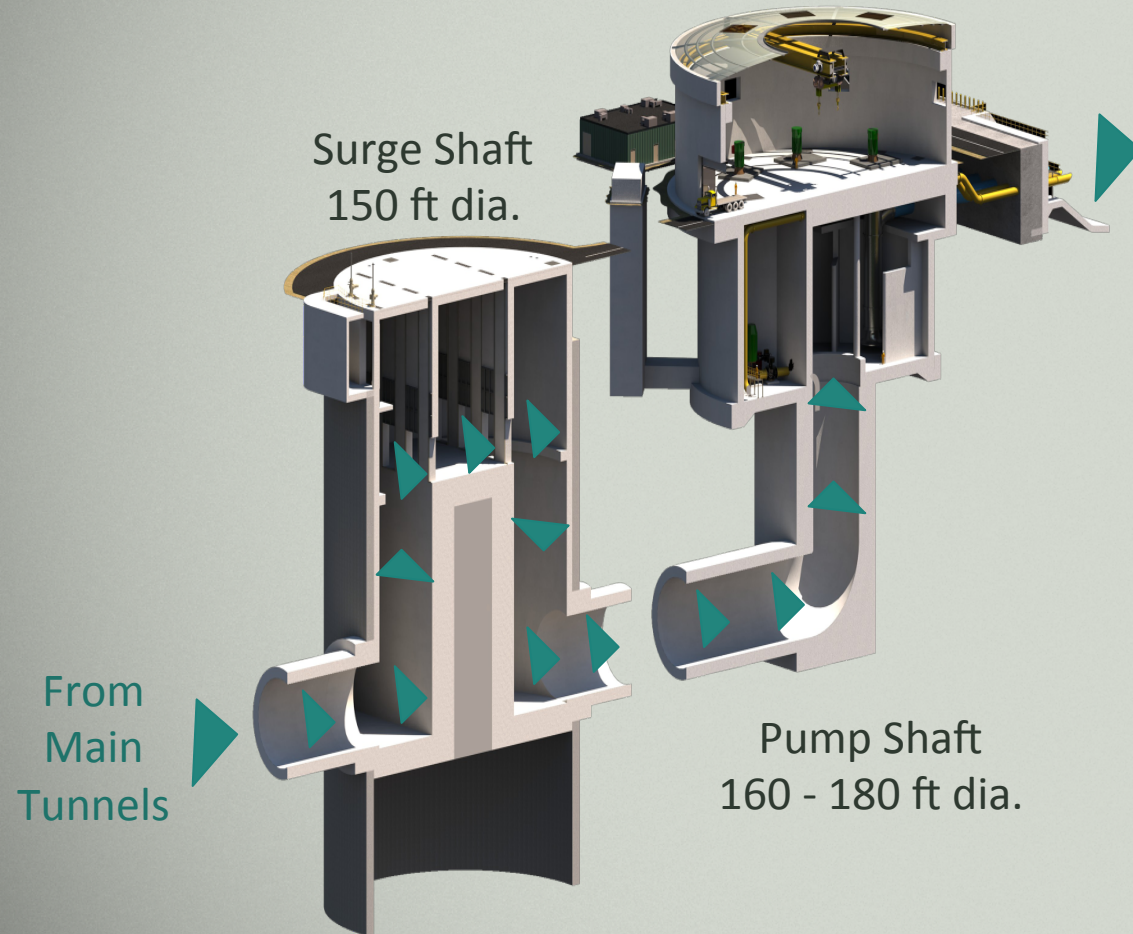
TUNNEL DEPTH

±150'

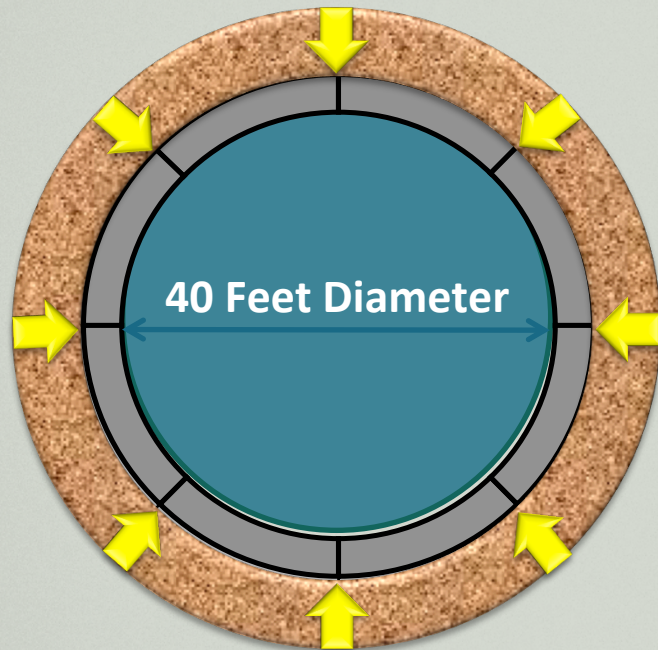




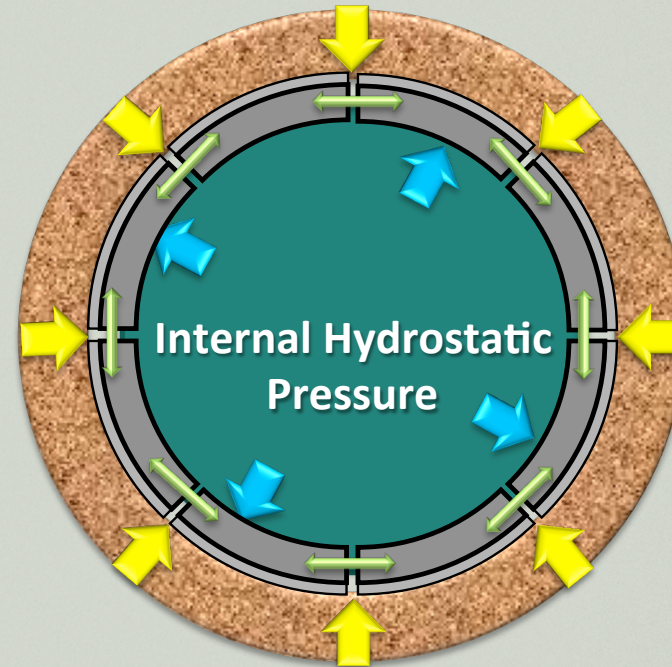
COMBINED PUMPING FACILITIES



TUNNEL DESIGN CONSIDERATIONS



Ground Loads –
Compression



Hydrostatic Loads –
Net Tension

CLIFTON COURT ANIMATION





NEXT STEPS FOR REIS/SEIS

- **Prepare REIR/SEIS – *currently in progress***
- **Circulate REIR/SEIS for 60-day public review/comment – *anticipated 2015***
- **Respond to DEIR/DEIS and REIR/SEIS Comments**
- **Prepare Final EIR/EIS**
- **30-day notice period**
- **Prepare and Adopt ROD/File NOD**

HOW TO GET INVOLVED



- (866) 924-9955
- info@BayDeltaConservationPlan.com
- www.baydeltaconservationplan.com
-  "BDCP_CA"
-  Bay Delta Conservation Plan

QUESTIONS?

For more information, visit: www.BayDeltaConservationPlan.com

