

# 690 & 692 MT. PLEASANT ROAD



**REGENT STREET**  
Retail & Restaurant Real Estate Solutions

# PROPERTY HIGHLIGHTS

- Brand new, fully renovated retail space
- Right-sized and suitable for a variety of uses
- New glass façade
- Excellent signage possibilities
- Ample public parking
- Ideal mix of residential and commercial density
- Steps from the new Eglinton LRT stop at Mt. Pleasant
- Above average household incomes
- Basement space available



**VANESSA OLIVER**  
Principal, Broker of Record  
(416) 807-4184  
[vanessa.oliver@regentstreet.ca](mailto:vanessa.oliver@regentstreet.ca)

**CATHLEEN HARNICK**  
Sales Representative  
(416) 903-4264  
[cathleen.harnick@regentstreet.ca](mailto:cathleen.harnick@regentstreet.ca)

**REGENT STREET**  
Retail & Restaurant Real Estate Solutions



# Prime retail in the heart of North Toronto, Leaside & Moore Park

## DETAILS

### ASKING RATE

Call Agents to Discuss

### ADDITIONAL RENT

\$13.60 PSF

### OCCUPANCY

Fall 2016

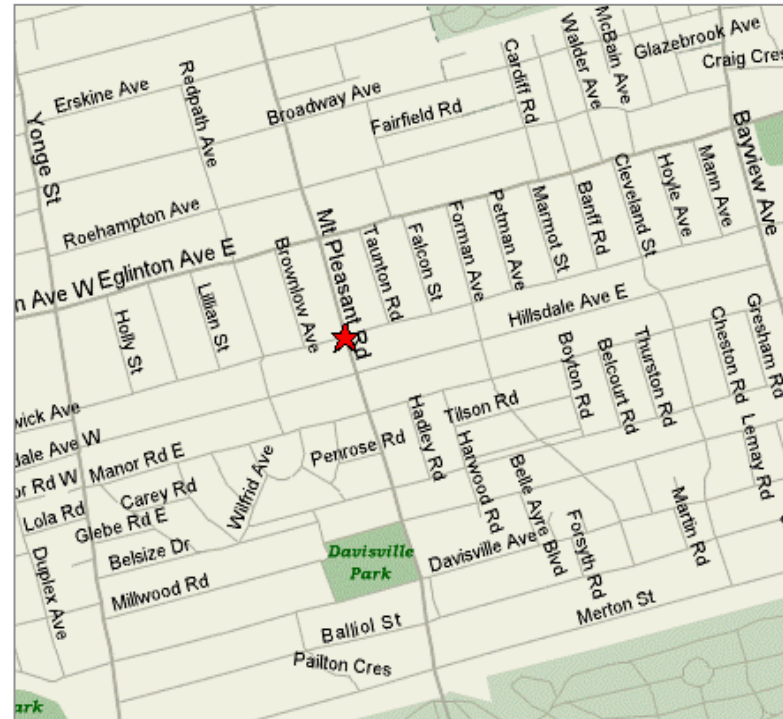
### TERM

10 years

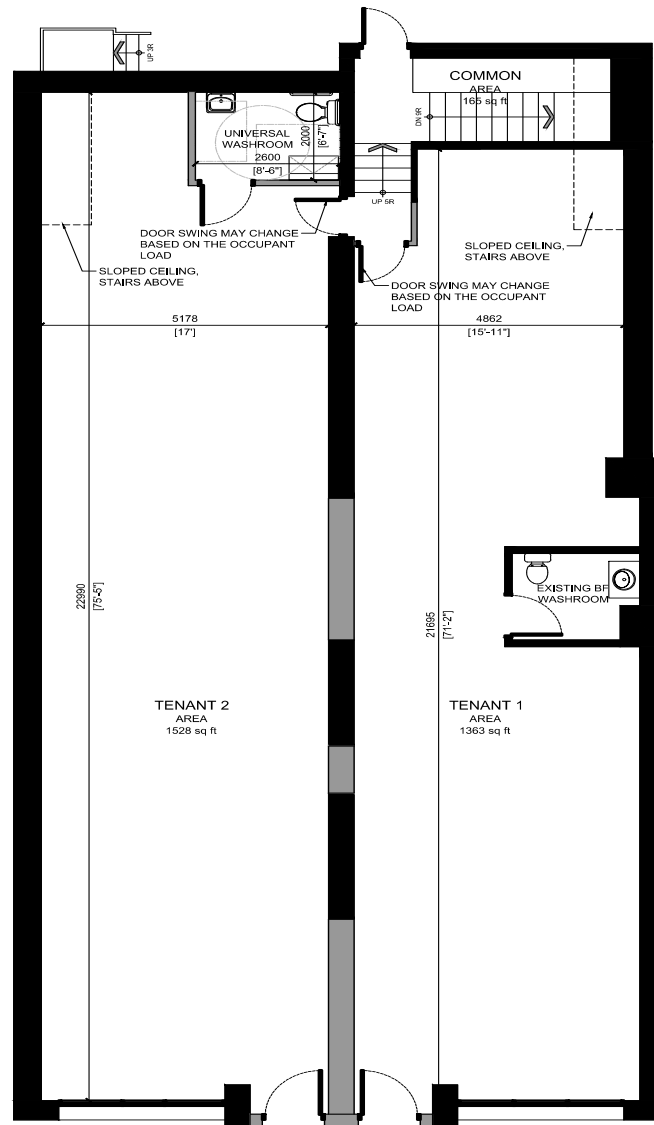
### AVAILABLE SPACE

690 Mt. Pleasant: 1,528 SF

692 Mt. Pleasant: 1,363 SF



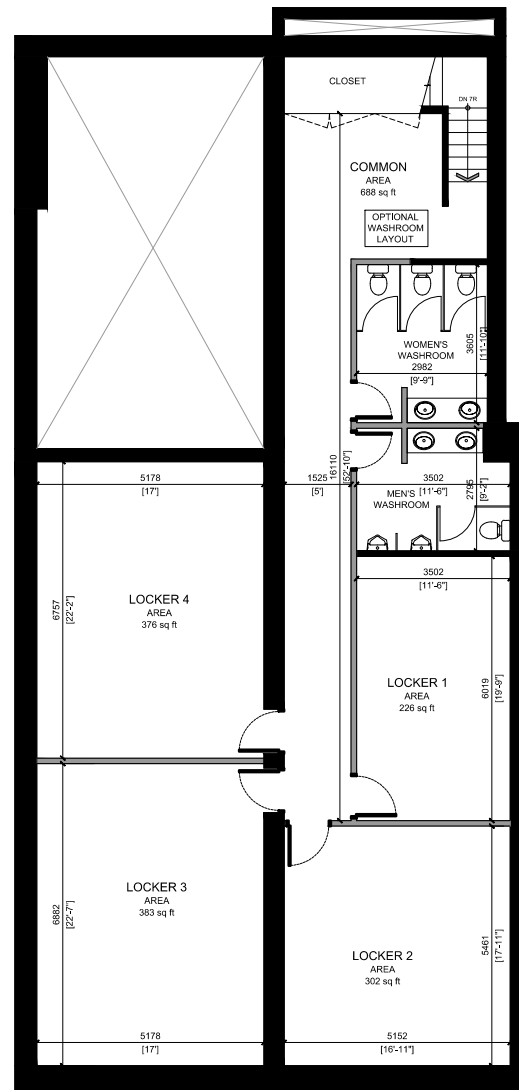
# FLOOR PLAN



**GROUND FLOOR**

**REGENT STREET**  
Retail & Restaurant Real Estate Solutions

# FLOOR PLAN



**BASEMENT**