

**Rabbit Anti-Osteopontin Polyclonal: RC0400, RC0400RTU7**

**Intended Use:** For Research Use Only

**Description:** Osteopontin is a 34kDa extracellular matrix protein with a cell binding domain. It was originally identified as a major component of the non-collagenous organic bone matrix, however, it has subsequently been demonstrated in a wide range of normal adult tissue and body fluids. It is a multifunctional protein involved in bone mineralization, cell adhesion, cell migration, chronic inflammatory disease and transformation. This antibody should prove useful in studying the expression of this matrix glycoprotein in tissue homeostasis.

**Specifications**

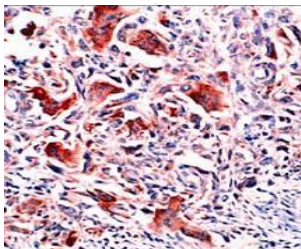
Clone:	Polyclonal
Source:	Rabbit
Isotype:	IgG
Reactivity:	Human, mouse, rat
Localization:	Cytoplasm
Formulation:	Purified antibody in PBS pH7.4, containing BSA and $\leq 0.09\%$ sodium azide (NaN <sub>3</sub> )
Storage:	Store at 2°- 8°C
Applications:	IHC, ELISA, WB
Package:	

Description	Catalog No.	Size
Osteopontin Concentrated	RC0400	1 ml
Osteopontin Prediluted	RC0400RTU7	7 ml

**IHC Procedure\***

Positive Control Tissue:	Osteosarcoma, breast cancer
Concentrated Dilution:	25-50
Pretreatment:	Citrate pH6.0 or EDTA pH8.0, 15 minutes using Pressure Cooker, or 30-60 minutes using water bath at 95°-99°C
Incubation Time and Temp:	30-60 minutes @ RT
Detection:	Refer to the detection system manual

\* Result should be confirmed by an established diagnostic procedure.



FFPE human breast carcinoma stained with anti-osteopontin using AEC

**References:**

1. Chiba H et al. Diabetes impairs the interactions between long-term hematopoietic stem cells and osteopontin-positive cells in the endosteal niche of mouse bone marrow. *Am J Physiol Cell Physiol* 305:C693-703, 2013.
2. Yang HY et al. Proteomic analysis of gingival tissue and alveolar bone during alveolar bone healing. *Mol Cell Proteomics* 12:2674-88, 2013.
3. Hapangama DK et al. Aberrant expression of metastasis-inducing proteins in ectopic and matched eutopic endometrium of women with endometriosis: implications for the pathogenesis of endometriosis. *Hum Reprod* 27:394-407, 2012.
4. Zhu H et al. Controlled growth and differentiation of MSCs on grooved films assembled from monodisperse biological nanofibers with genetically tunable surface chemistries. *Biomaterials* 32:4744-52, 2011..
5. Song YR et al. Activation of hypoxia-inducible factor attenuates renal injury in rat remnant kidney. *Nephrol Dial Transplant* 25:77-85, 2010.
6. Sreekanthreddy P et al. Identification of potential serum biomarkers of glioblastoma: serum osteopontin levels correlate with poor prognosis. *Cancer Epidemiol Biomarkers Prev* 19:1409-22, 2010.

Doc. 100-RC0400  
Rev. A