



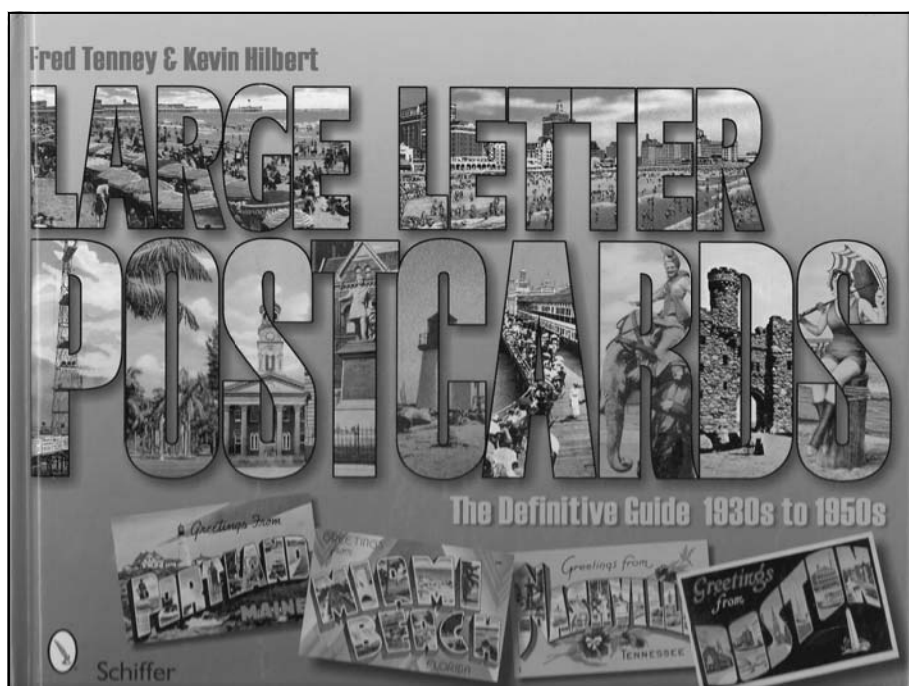
# Twin City Postcard Club

TCPC – JAN/FEB 2010 VOLUME XXXIV NUMBER 1

## New Book that will Catch your Eye

By Duane Stabler

IN THIS ISSUE	
Large Letter Postcard Book	1
Various items of interest	2
Foshay Mania	3, 9
Dear Mr. Postcard	4
Remembering those who have passed on	5
Postcard Info on the Internet	6
TCPC moves to Incorporate	6
S.S. Alaska	7
Editor's Challenge Update	8
TCPC is 33 years Old	8
Advertising	10
Upcoming Meetings	11



Shortly after the October monthly meeting, Peter Lee approached Chuck Donley with a book that he'd just received from authors Fred Tenney and Kevin Hilbert. The book has 174 pages of color images of Large Letter Postcards just as the title states. What is certainly unique about this book is that the cards shown have images within the postcard letters. The linen postcards were sold from the 1930s to the 1950s. The book documents some 2,200 large letter postcards and does include pricing based on the author's research.

In addition to the images, the book contains detailed history of the postcards and information about the designers and manufactures.

The book will be added to the TCPC library. We all owe Peter Lee a special thank you for this generous donation. ♦

**Check your label on page 12 and verify you are a member who has dues paid and you are current. We need dues paid if you want to keep your membership and receive this newsletter. Send the dues to Diane before you forget !**

### A Follow Up from the TCPC Fall 2009 Show

TCPC wants to thank Augustana Lutheran Church who allowed the club to use the parking lot on Saturday during the TCPC show. As we all recall, the parking lot really made it handy for us to get into and out of the show. TCPC did gift the church for their kindness and for helping us out.

### Italian Postcard Enthusiast Seeks Individuals to Exchange Post Cards

Antonio Lelli, a collector of postcards recently wrote the editor wishing to exchange postcards from the USA with postcards from Italy. He writes “I'd like to exchange modern postcards, towns postcards... send me I'll send them some Italian towns postcards. thanks. Antonio” Antonio Lelli can be reached at [antonio.elli@gmail.com](mailto:antonio.elli@gmail.com) if you wish to obtain his mailing address to do the exchange. Antonio also mentioned his sister, Giulia , also has an interest in postcards and also wishes to exchange postcards.

### Author Seeks Images from Wisconsin

Arlyn Colby writes “The railroad book I'm doing will chronicle the Milwaukee Road trackage that ran from Wabasha, MN to Read's Landing, across the Mississippi River on a "pontoon bridge" and up to Eau Claire and Chippewa Falls with a branch line to Menomonie and Cedar Falls.

Probably most pictures that were taken would be of: Pontoon bridge, Durand, Eau Claire, Chippewa Falls, Menomonie

Pictures I'm really looking for would be from: Meridian, Caryville, Porter's Mill, Dunnville, Downsville, Irvington, Cedar Falls.” Contact Arlyn Colby [acolby@chibardun.net](mailto:acolby@chibardun.net)

### Welcome New Members:

#### Julie & Ken Enroth

Minneapolis, MN  
Collecting: Local, Minnehaha Falls, Wonderland, Grain Elevators on Hiawatha Ave, Como Park, Vintage Minneapolis & Duluth .

#### Steve & Nancy Bailey

St. Paul, MN  
Collecting: Midway area of St Paul, Large Letter, MN, small towns, hotels that match up to hotel covers.

### 2010 Board of Directors and Officers

President: Chuck Donley, 952-988-9797

VP/Membership : Dianne Lamb, 651-460-4927

Treasurer: Allan Hillesheim, 612-377-6062

Secretary: Dave Norman, 612-729-2428

Editor: Duane Stabler, 952-447-8654

Assistant Editor: Dave Norman, 612-729-2428

Program Chair: Dave Johnson, 651-426-3573

Show Chair: Dave Johnson, 651-426-3573

Social Coordinator: Dean Borghorst, 612-332-0256

Librarian: Louise Carpentier, 763-545-3133

Corresponding Sec.: Shirley Mitchell, 952-942-8874

Member-at-Large: John Cole, 507-789-6344

Member-at-Large: Don Morgenweck, 952-926-8668

Member-at-Large: Alan Calavano, 507-282-4389

Webmaster: Duane Stabler, 952-447-8654

**We are on the web!**

[www.twincitypostcardclub.com](http://www.twincitypostcardclub.com)

## Foshay Mania

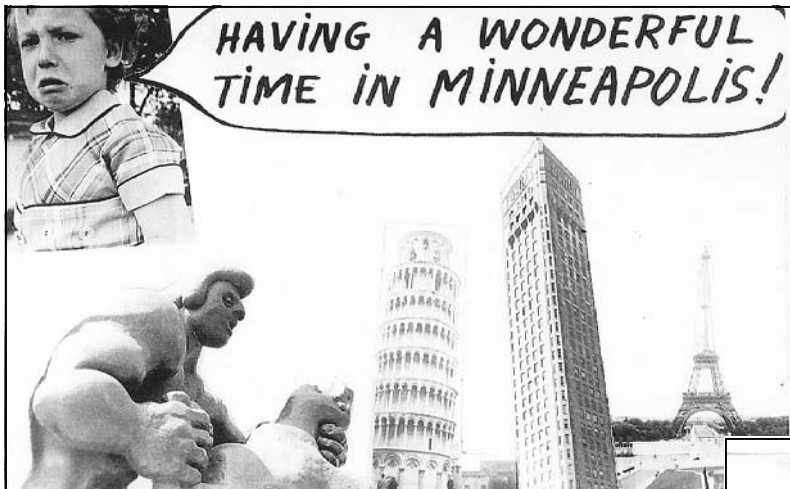
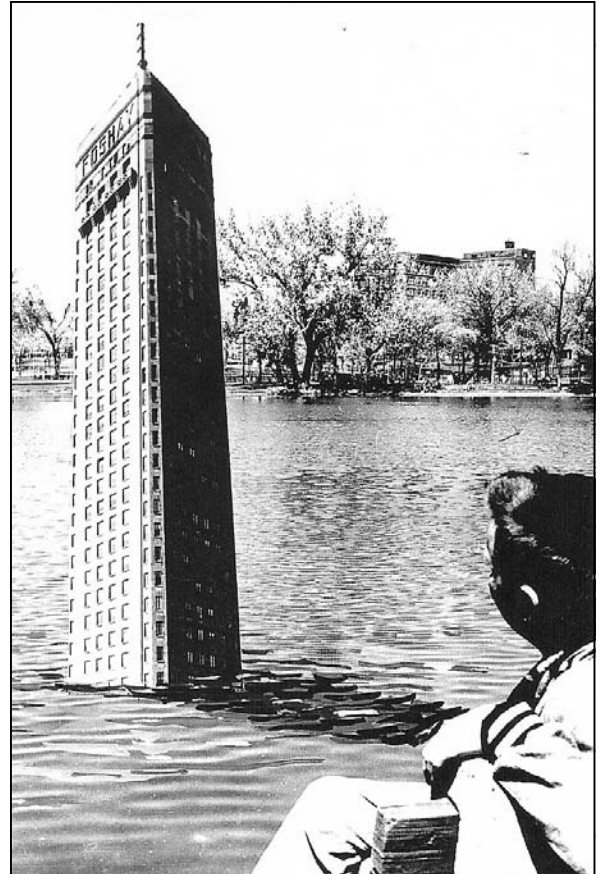
By Dean Borghorst

These interesting and odd postcards are quite a mystery to me. I acquired the group of eight cards from Allan Hillesheim who knew nothing of their past. The cards are printed on Kodak paper and none of them have been used or have writing on the back. I've never come across any of them before.

The two cards where the Foshay Tower rises from the water are taken in Loring Park near downtown Minneapolis. The Salvation Army Evangeline Residence, which was torn down in 1975, can be seen through the trees in the background.

The card where the pouting girl says "Having a wonderful time in Minneapolis" includes the Walker Art Center's sculptures Prometheus strangling the vulture by Jacques Lipchitz.

If anyone knows more about these fun but weird cards, please contact the editor and/or author so we can share more about them. ♦



### Computer Quotes

What is a computer's first sign of old age?  
Loss of memory.

What does a baby computer call his father?  
Data.

What is an astronaut's favorite key on a computer keyboard?  
The space bar.

What happened when the computer fell on the floor?  
It slipped a disk.

Dear Mr Post Card,

What makes a post card not a post card? This year I had an entry in the MN State Fair that was disqualified. The reason given was, "They are not post cards."

I purchased a set of cards in a box and on the box it reads, " A collection of Samuel F. Cody postcards..." Then, in a separate space the information reads, "A selection of original Cody photographs and illustrations formatted as postcards, ...."

The cards are 8" x 5" and on the back there is a printed designated area for postage, divided area for "Address" and note writing. It has all the earmarks of a postcard.

So what is it about these cards that makes them not a card? I will read your answer in the next newsletter. ....Tommy the kite collector

Dear Kite Collector,

We had to do some research to come up with an answer. It was good that you could bring your display to the Club meeting for all to see so to aid in the research. As it turns out the very same prepared box of Samuel F. Cody post cards was on sale by one of the dealers at the recent TCPC card show.

It was necessary to contact judging staff for the MN State Fair to get a definitive answer. It seems you had more than one entry in this year's fair. You identified entries for categories for #820 Novelty Cards and #822 Topic: Historical Event.



The problem is a common mistake by entrants in the #822 category. It is for historical cards only, "pre-1920." Both of your card entries were new modern slick finish chrome cards. The judges made a decision to put the entries into category #824 Chrome slick finish modern cards. And given that a person can only have one entry, the better of the two, Chinese Kite Festival was kept and your selection on Samuel F. Cody was dropped out.

The categories #815, 823, and 824 are for antique cards only. That means they must be before 1920.

I hoped this helped you. And better luck next Fair season. ♦

Tom Cross [thomasecross@yahoo.com]

Editor's note: Tom was recently published, online, in the Postcard Collector the online only publication.....congratulations to you Tom.....Editor



**The Rev. Rexford A. Fliess**

1945-2009



Rexford Albert Fliess, 64, was born to Ruth ( Way ) and Manfred Fliess in Medina, Ohio, on January 9, 1945.

He graduated from Avonworth High School, Ben Avon, Pa. in 1962; Davis & Elkins College in Elkins, W.V. in 1966 and in 1979 from Seabury-Western Theological Seminary, Evanston, Ill.

After 10 years in the business world, he was called to pursue a career as an Episcopal priest. He was ordained a deacon on June 9, 1979 in Newark, N.J. and a priest on December 12, 1979 at St. Peter ' s Church in Chicago. Over the years, he served in a variety of parishes throughout the Midwest including Illinois, Minnesota and Wisconsin. He was also active in numerous community activities throughout the years. In 2005 he retired to Bayfield, Wis. where he served as assisting clergy at Christ Church, Bayfield until 2009. He served as a supply priest in Ashland, Spooner and Hayward, Wis. He was blessed to share his final time in ministry at St. Andrew' s Church, Ashland, during this past summer.

Rex was a vintage postcard collector and dealer and enjoyed many trips around the Midwest to buy and sell postcards. Rex was a member of TCPC, a dealer in postcards at numerous TCPC shows throughout the years.

He is survived by his wife, Claire, of 43 years, and one son Robert Way Fliess of Bayfield; his brother Robert ( Vi ) of Ohio; eight nieces and nephews and his extended family of Bonnie Kessler, her daughters, Jennifer and Bonita and their children Megan, Robert, Sean, Sarabeth and Oliver.

TCPC sends our sympathy to the Fliess family. ♦

**Eleanor Joyce Johnson -**

Passed away on November 12, 2009.

Preceded in death by parents, George & Phyllis Orlemann; Sister, Edith May Schoberg; Brother, John Stewart Orlemann. Survived by husband, Dave. Brother, George ( Karen ) Orlemann. Stepson, Scott Johnson. Numerous nieces, nephews and grandnieces & grandnephews.

Eleanor was a longtime Executive Secretary of the Minnesota American Legion Auxiliary. The funeral service was on Thursday , Nov 19th at the Como Park Lutheran Church in St. Paul, MN.

Eleanor was always visible at the TCPC Postcard Shows, assisting at the registration desk while her husband, Dave, was the chairman of the shows. We' ll always remember her for her friendly smile and willingness to assist all of us and we' ll miss her at our future shows.

TCPC extends our deepest sympathy to Dave and his family. ♦

## Postcard Info on the Internet

By Alan Calavano

I recently discovered a website called “Life In A Postcard Mirror” that contains more than 70 interesting (illustrated) postcard articles with 3 or more new articles being added every month. The website is the creation of Debra Gust of the Curt Teich Postcard Archives and “discusses the picture postcard as art, visual document and popular culture icon.”

As many of you hopefully know, the Curt Teich Postcard Archives at the Lake County Discovery Museum is the world’s largest public collection of postcards and postcard related material. It is located in Wauconda, Illinois about 30 miles NW of downtown Chicago. Debra has been the Image and Licensing Specialist for the Curt Teich Postcard Archives for twenty years. She has a Masters Degree in Liberal Studies/museum emphasis from the University of Oklahoma and provides public access to more than 400,000 visual images in the archives. She is passionate about postcards and believes that “postcards as visual documents tell the unabashed story of the exponential growth of the twentieth century, revealing the century’s greatest character flaws and strengths.”

You can go directly to Debra’s “Life In A Postcard Mirror” website by typing <http://teicharchives.blogspot.com/>. Alternately, you can go to the Curt Teich website ([WWW.TEICHARCHIVES.ORG](http://WWW.TEICHARCHIVES.ORG)) and Select “Life In A Postcard Mirror Blog” at the bottom of the left column.

Recent postcard articles on the website include: “The White Cities”; “A Postcard Thanksgiving”; “Diners, Drive-Ins and Fast Food”; “Halloween is for Lovers”; “A Woman’s Nation”; “The Teich Archives Goes Hollywood”; “An Apple By Any Other Name”; “Sweet Carolinas”; “Displays of Confections”; “Roadside Distractions”; “Postcard Paradise”; “Postcards for Today” (4 Parts) and nearly 60 more.

Since quite a few club members don’t use the Internet, Debra has graciously given us permission to reprint some of her website articles in the TCPC Newsletter, so watch for them in future issues.

As always, if you have any comments, questions, ideas, requests or PC related Internet sites that you’d like to contribute to this column, please contact me at [ALCAL@ALUM.MIT.EDU](mailto:ALCAL@ALUM.MIT.EDU) or 507-282-4389. Guest-written Internet related articles are also welcome.◆

## TCPC Takes Steps Toward Incorporation

During the November meeting, those in attendance at the business heard and saw the structure of the by-laws and constitution which were available for review. After a review, conducted by Duane Stabler, the membership unanimously voted to accept the documents as written. This cleared the way for the next step—The Certificate of Incorporation has been filed.

This cleared the way to elect officers during the December meeting. The structure requires a secretary (Dave Norman was elected), a duty never held or filled in the chapter. Others elected include Chuck Donley, president; Dianne Lamb, VP/membership; Allan Hillesheim, Treasurer. At large positions will be filled by Alan Calavano, Don Morgenweck and John Cole. Congratulations to all .....editor.◆

## S.S Alaska

By John L. Cole

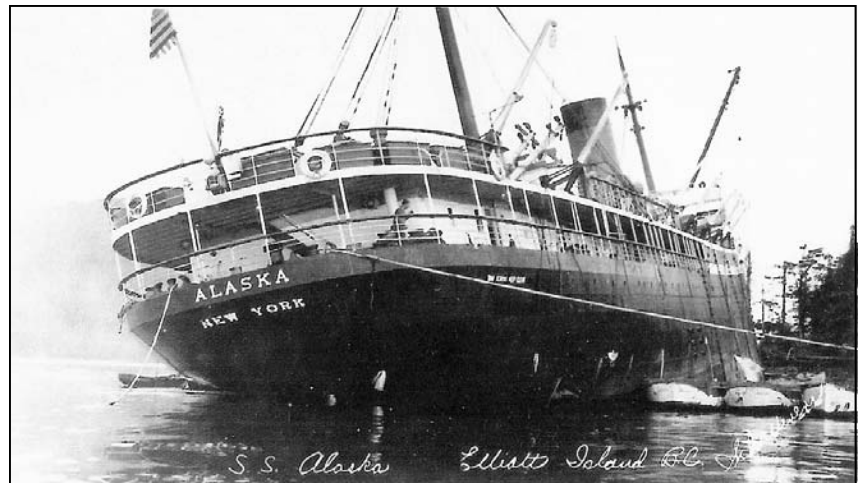
The Alaska Steamship Company was formed in 1884 with the intent of shipping passengers and fishing products between Alaska and the United States. At the outbreak of the 1897 Klondike Gold Rush the steamship company began to ship mining equipment, dogs and cattle, thus, expanding the business.

Through a merger in 1909 the fleet was expanded to eighteen ships. It also purchased the Pacific Steamship Company in 1930. During World War II, the federal government took over control of the fleet.

After World War II, the company was slowly driven out of business. It did try implementing tug boats, barges and other container ships which allowed for smaller crews, faster loading and unloading and less damage to cargo. But all this effort could not save the steamship company and, in 1954, the company discontinued passenger services. They did hang on, but in 1971 the company finally shut down completely.

The S.S. Alaska was the flagship of the Alaska Steamship Company. It was a double hull, steel vessel with collision bulkheads. It was launched in 1923 and operated between Seattle, WA and Alaska.

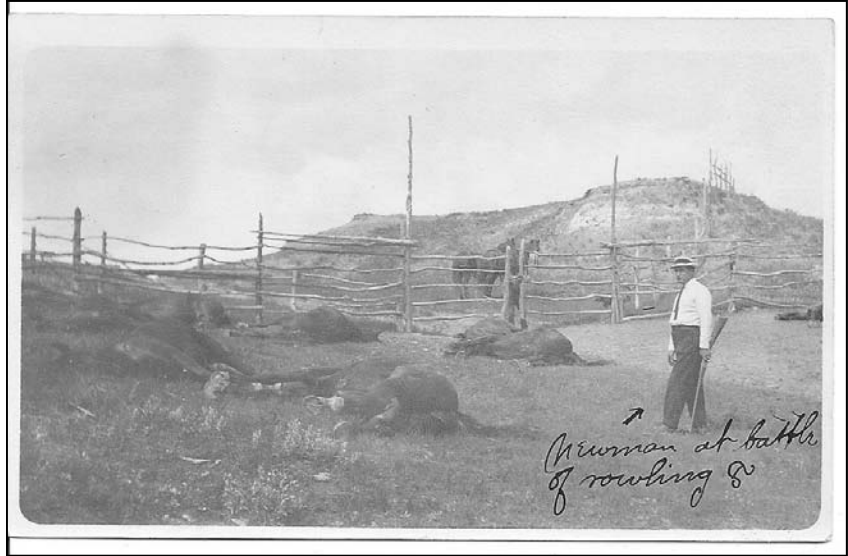
The postcard shown shows what happened to the ship. Shortly after midnight on October 27, 1940 on a southbound voyage to Seattle, the ship ran aground at full speed on the rocky shores of Elliott Bay. Elliott Bay is located between Ketchikan and Prince Rupert, British Columbia. The captain, fearing a puncture of the hull, ordered 278 passengers into lifeboats. The S.S. North Coast brought them to Prince Rupert. Two days later, the ship was refloated, inspected and arrived in Seattle under its own power arriving on November 1, 1940.



Although the postcard I own is very yellow, it does show the accident. I also found another photo, shown, that better illustrated the unexpected grounding of the S.S. Alaska. ♦

**Editor’s Challenge**

Possible answer to the challenge from Tom Cross— I stopped at my friendly vet and let him take a look at the pictures. His theory is they are government workers killing diseased horses. The clue is white shirt, black tie and hat. Who else would be out there killing a horse looking like that and recording it. He even suggested the disease but I forgot the name. ♦



**TCPC 33 Years Old and Going**

What were you doing 33 years ago? Well, back then I didn’t know about postcard collecting as a hobby. I was barely out of college and was busy with my first job out of school. Frankly, I didn’t have much money and collecting anything really was low on my list.

Thirty Three years later, I enjoy the hobby of collecting postcards as many of you too have started. Wouldn’t it be fun to know what the price of some of those rather expensive cards would have cost back then. Well, come to some of our meetings and meet a few of those who have been collecting for many years and perhaps were part of that original group of collectors. I encourage you to attend the monthly meetings where you’ll be able to strike up friendships and learn more about postcards. Maybe, you’ll even find a couple to buy from time to time.

We celebrate our anniversary each year. Dean brought in this nice cake last fall to celebrate this 33rd anniversary. May TCPC live on for at least another 33 years!

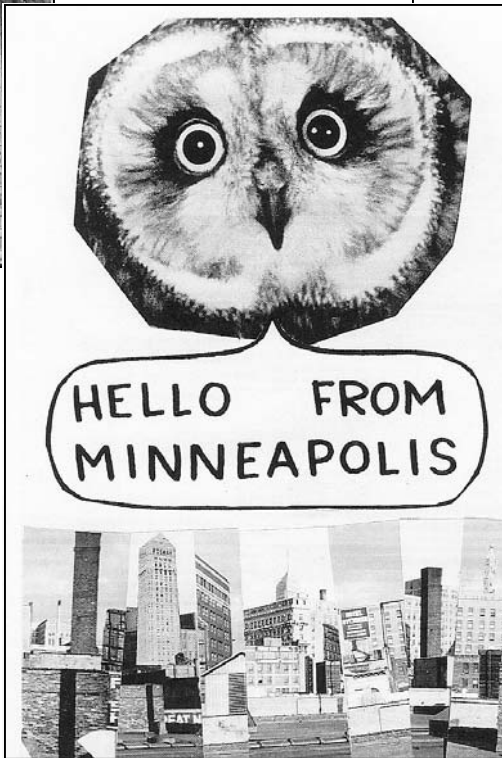
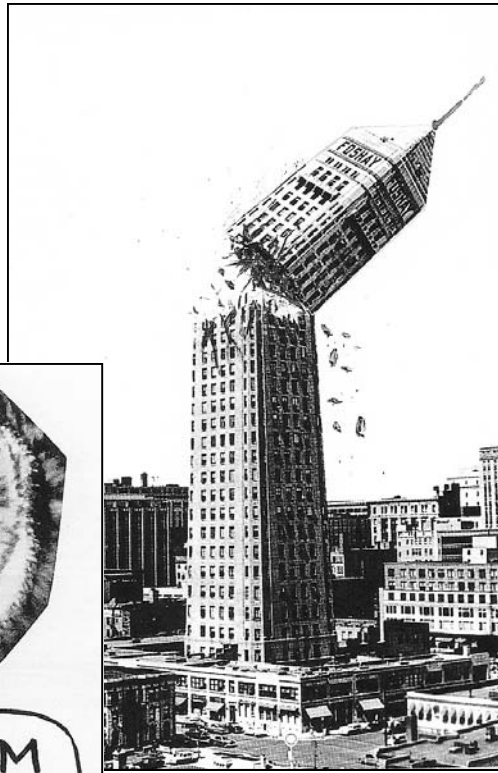


For your convenience, the calendar of meetings is listed on page 11 which allows you to schedule the attendance and not miss anything TCPC has to offer. ♦.....**editor**

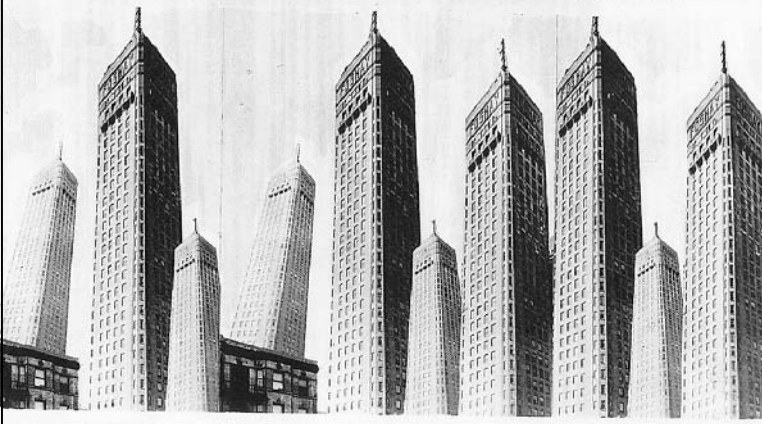


GREETINGS FROM  
MINNEAPOLIS

Foshay continued from page 4



*Hello FROM MINNEAPOLIS*



**Advertising:**

General advertising will appear in newsletters. Members can have one free line ad in the newsletter each year. Send your ad (and payment if required) to the newsletter editor.

Member Advertising rates (per issue)

- Business card size...\$4.00
- Quarter Page.....\$10.00
- Half Page .....\$20.00
- Full Page..... \$30.00

**POST CARDS WANTED**

**Granite Falls, MN postcards  
Paul Benson  
Granite Falls, MN 56241  
Tele. # 1-320-564-3743**

expires: March 2010

*We are on the web!*  
[www.twincitypostcardclub.com](http://www.twincitypostcardclub.com)

Gift Cards provided during the business meetings have been provided by these sponsors.  
We thank them for their generosity.

**Davanni's**

**Macaroni Grill**

**Bakers Square**

**Perkins**

**Noodles**

**Upcoming Meetings and Events**

All meetings to be at:  
**The Lynnhurst Community Center,**  
**1345 W. Minnehaha Parkway (at 50th St.)**

**Upcoming Programs**

It's time to plan for 2009 and we hope to offer programs at least once per quarter again this year. Do you have a suggestion for something you'd like to see? Or, perhaps you'd like to offer a program yourself (don't be shy)? Programs should be about 15 minutes in length and can be about anything from your favorite card topic or a general postcard topic. Call Dave Johnson at 651-426-3573 for further details.

**Monthly Meeting Schedule.**

**January 20**

"I was wondering about this and afraid ... you ask, we'll all try to answer. (you write the question on a piece of paper and submit it)

**February 17**

"I was wondering about this and afraid ... you ask, we'll all try to answer. . (you write the question on a piece of paper and submit it)

**Tentative Programs**

**March 17**

Peter Sussman presents Lake Harriet Postcards

**April 21**

Ted Hoshel presents Mission Farms Postcards

**May 19**

Fritz Angst presents Bryon Harmon, photographer of the Banaff Postcards

**Meeting Schedule for 2010**

- January 20, 2010
- February 17, 2010
- March 17, 2010
- April 21, 2010
- May 19, 2010
- June 16, 2010
- July 21, 2010
- August 11, 2010
- September 15, 2010
- October 20, 2010
- November 17, 2010
- December 15, 2010

**Board Meeting Schedule for 2010**

- March 3, 2010
- May 5, 2010
- July 7, 2010
- September 1, 2010
- November 3, 2010

**Do you have a program you'd like to present? If so, contact Dave Johnson, program director**

**Twin City Postcard Club Membership Application**

Please check one: New Member \_\_\_\_\_ Renewal \_\_\_\_\_ Reinstatement \_\_\_\_\_ Change of Information \_\_\_\_\_

NAME \_\_\_\_\_

STREET ADDRESS: \_\_\_\_\_

CITY/STATE/ZIP \_\_\_\_\_

TELEPHONE # (include area code) \_\_\_\_\_

E-MAIL ADDRESS (optional) \_\_\_\_\_

TYPES of POSTCARDS COLLECTED: \_\_\_\_\_

Mail to Dianne Lamb, TCPC Membership Chair, 25145 Chippendale Ave, Farmington MN 55024  
 Total Dues annually: \$13 + \$1 for each additional member in the household

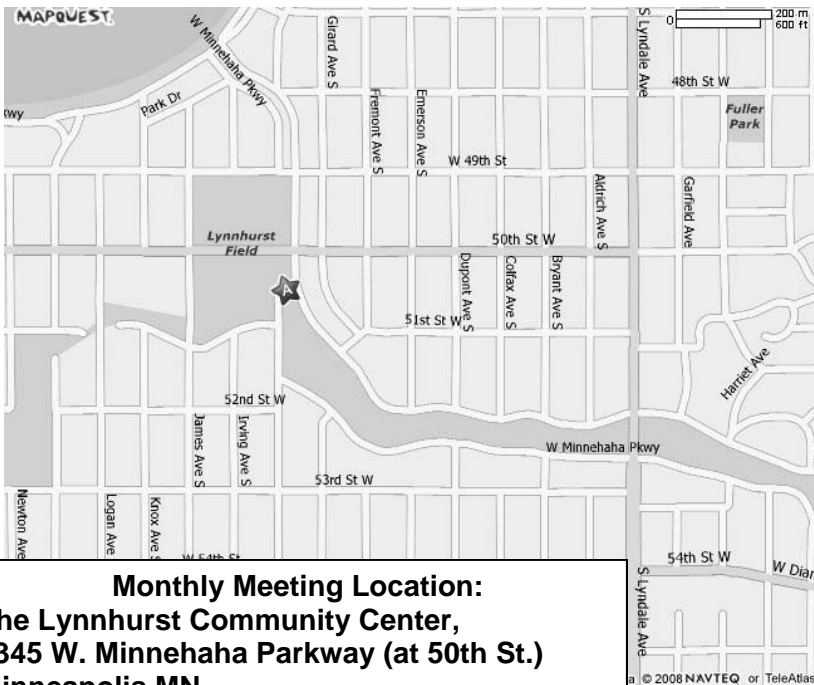
Twin City Postcard Club  
25145 Chippendale Ave.  
Farmington MN 55024



If your address label is **highlighted**, your dues are due! Please return the application in this newsletter, with any updates, and a check for \$13, plus \$1 for each additional name at the same address.  
Thank You!

TCPC – JAN/FEB 2010

VOLUME XXXIV NUMBER 1



**Monthly Meeting Location:**  
**The Lynnhurst Community Center,**  
**1345 W. Minnehaha Parkway (at 50th St.)**  
**Minneapolis MN**  
**Time: 5:30 - 8:45 pm (program and meeting**  
**at 7:15)**

**Check your label below and verify you are a member who has dues paid and you are current. We need dues paid if you want to keep your membership and receive this newsletter. Send the dues to Diane Lamb before you forget !**

Got something you want to contribute?  
Contact: Editor: Duane Stabler  
Email: [dstabler@bigfoot.com](mailto:dstabler@bigfoot.com)