

The breed standard for Eurasier



Copyright: [EKW-ZG-KZG](#)

F.C.I.- STANDARD No.291

BREED STANDARD EURASIER

Group 5: Spitz and primitive type

Section 5: Asiatic spitz and related breeds
without working trial

- EKW – Eurasier- Klub Weinheim e.V.
 - KZG – Kynologische Zuchtgemeinschaft für Eurasier e.V.
 - ZG – Zuchtgemeinschaft für Eurasier e.V.
-

BRIEF HISTORICAL SUMMARY:

In 1960 a breed was evolved by crossing a Chow Chow and a Wolfspitz.

This was first called "Wolf-Chow" and then, after crossing with a Samoyed, was renamed "Eurasier" (Eurasian) and recognized by the F.C.I.

Julius Wipfel's aim was a natural looking dog (northern type), friendly to people with different natural colours.



Vorbeck, Post, Katthöfer,
Marktaler, Wipfel.

Entstehung des **EURASIERS**



Wolfsspitz



Samojede



Chow-Chow



KYNOLOGISCHE ZUCHTGEMEINSCHAFT



EURASIER e.V.

www.kzg-eurasier.de





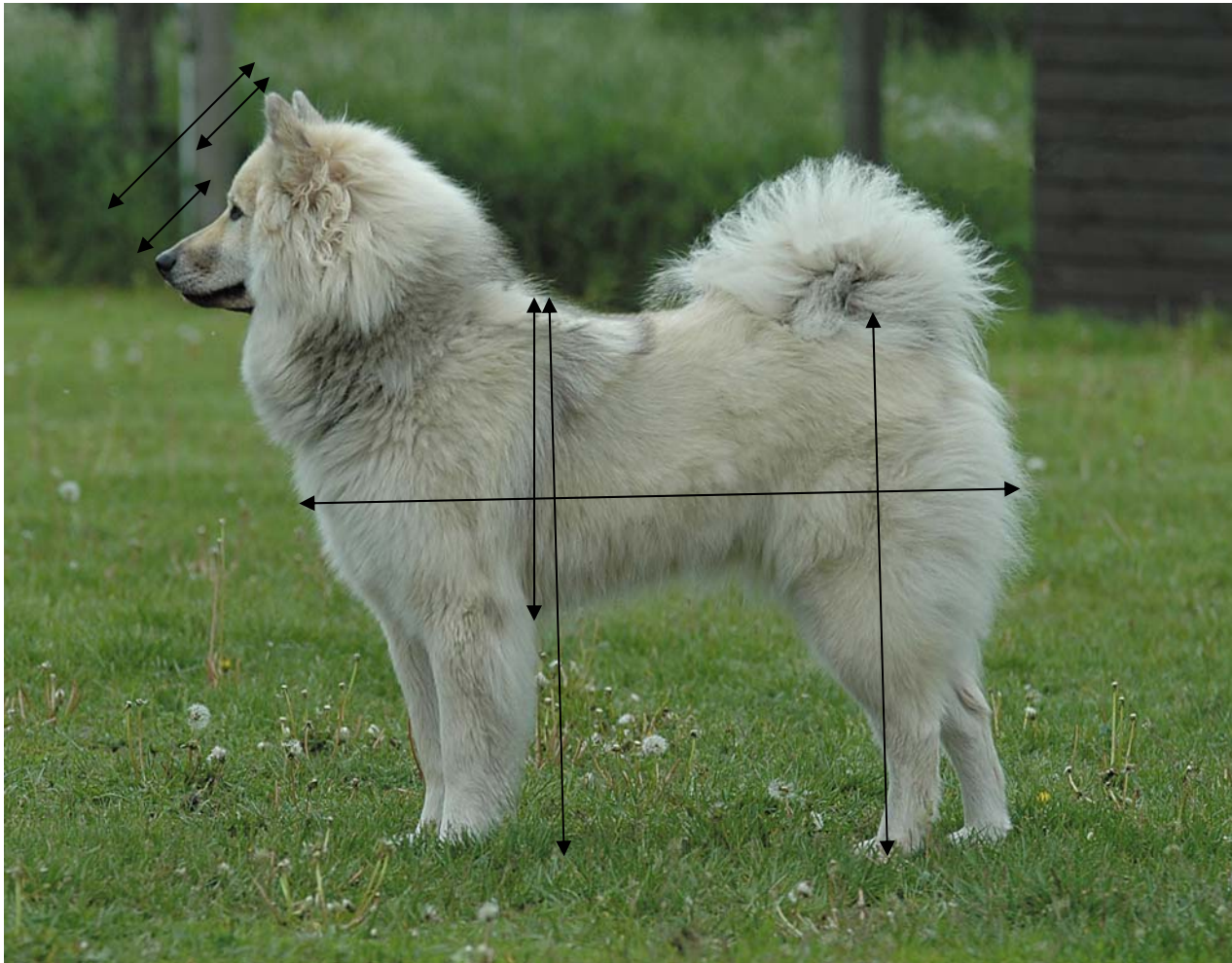
GENERAL APPEARANCE: Balanced, well constructed medium sized dog of Spitz type with prick ears and coat in varied colours. Length of coat should be such as still to reveal the body proportions. With medium bone.

female, male





Photos Vorbeck



IMPORTANT PROPORTIONS: Length of back slightly longer than height at withers.
The ratio of length of muzzle and length of cranial region is almost equal.

the first look

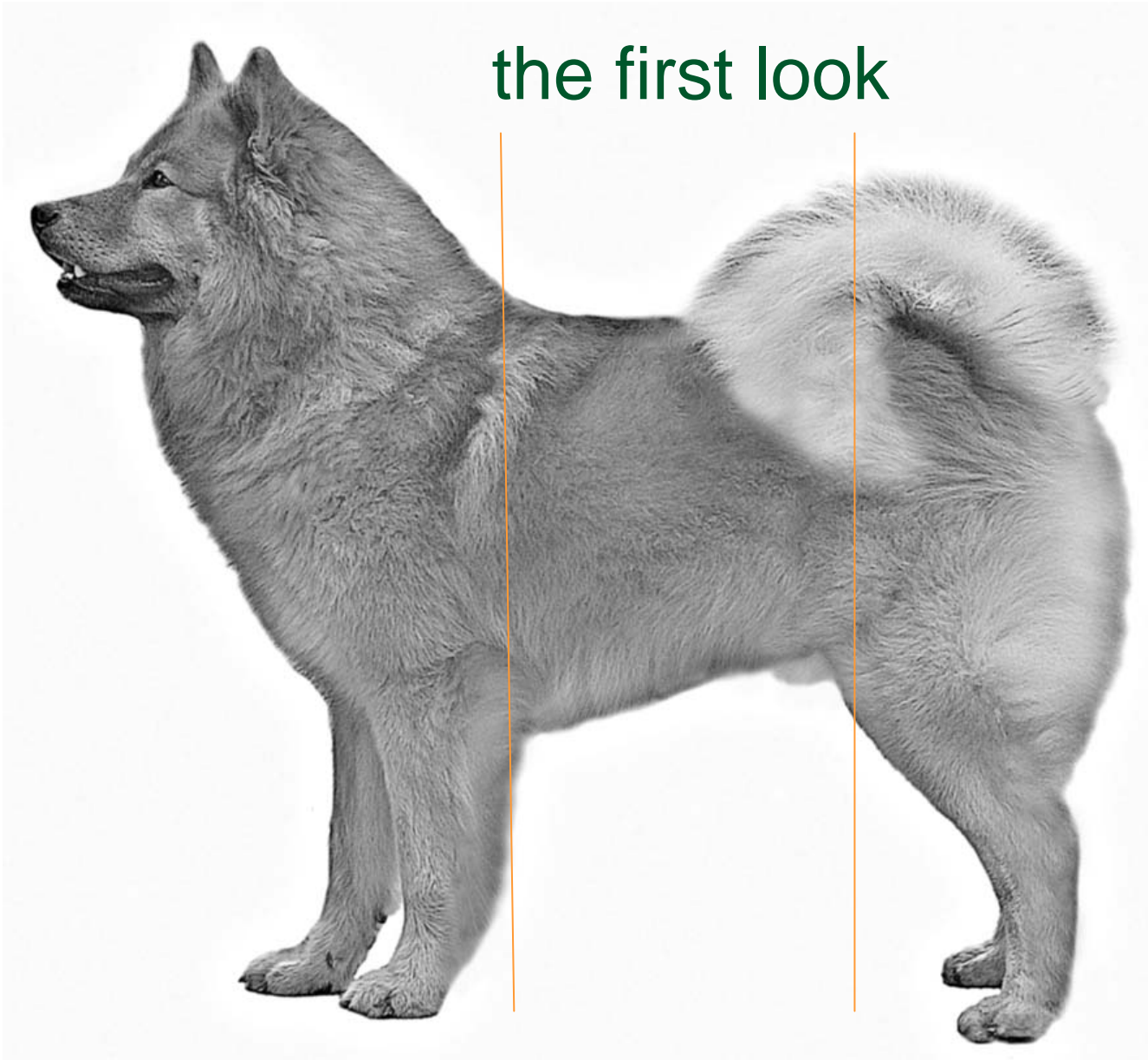


Photo Vorbeck

Forequarters

middle

hindquarters

BEHAVIOUR

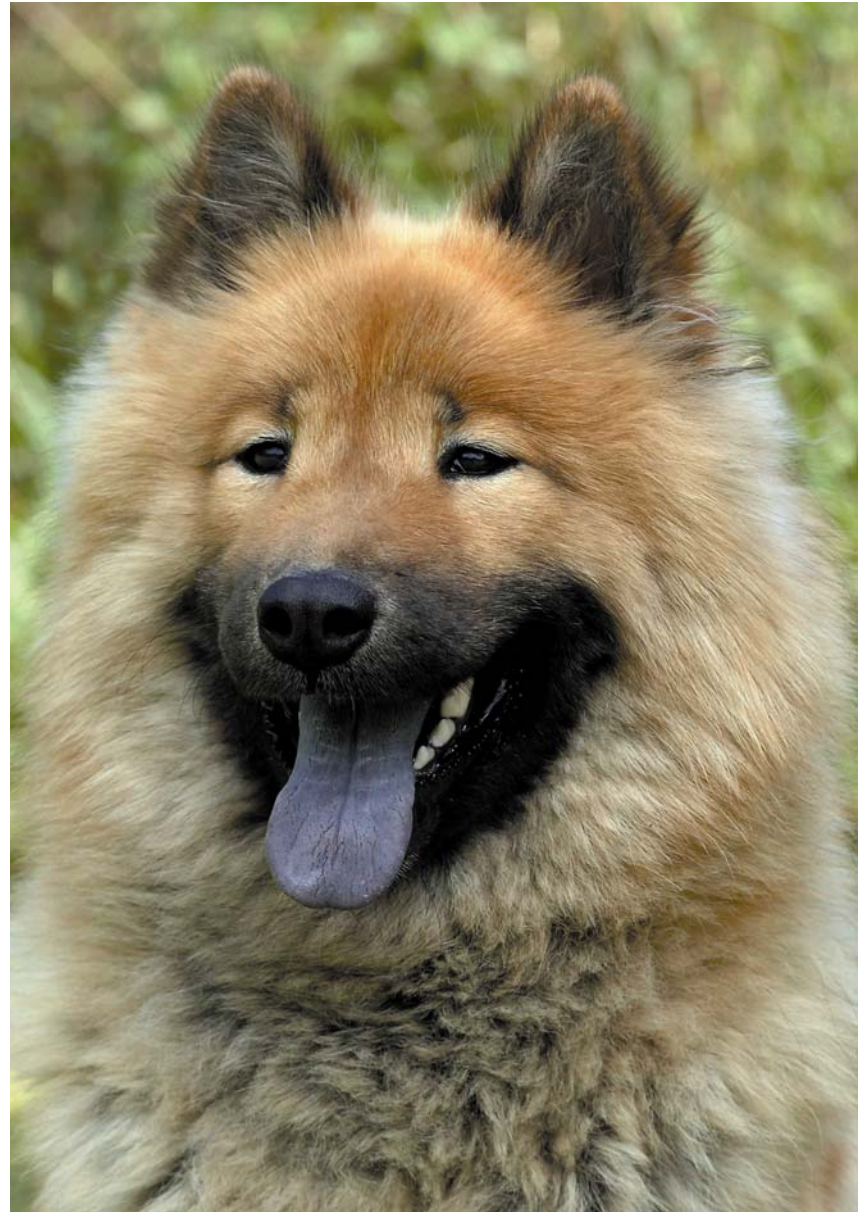
TEMPERAMENT: Self-assured, calm, even tempered with high resistance against provocation. Watchful and alert without being noisy. Very strongly developed link to his family. Reserved towards strangers without being aggressive. No hunting instinct. For the full development of these qualities, the Eurasier needs constant close domestic contact with his family and understanding, yet consistent training.



proportions of the head

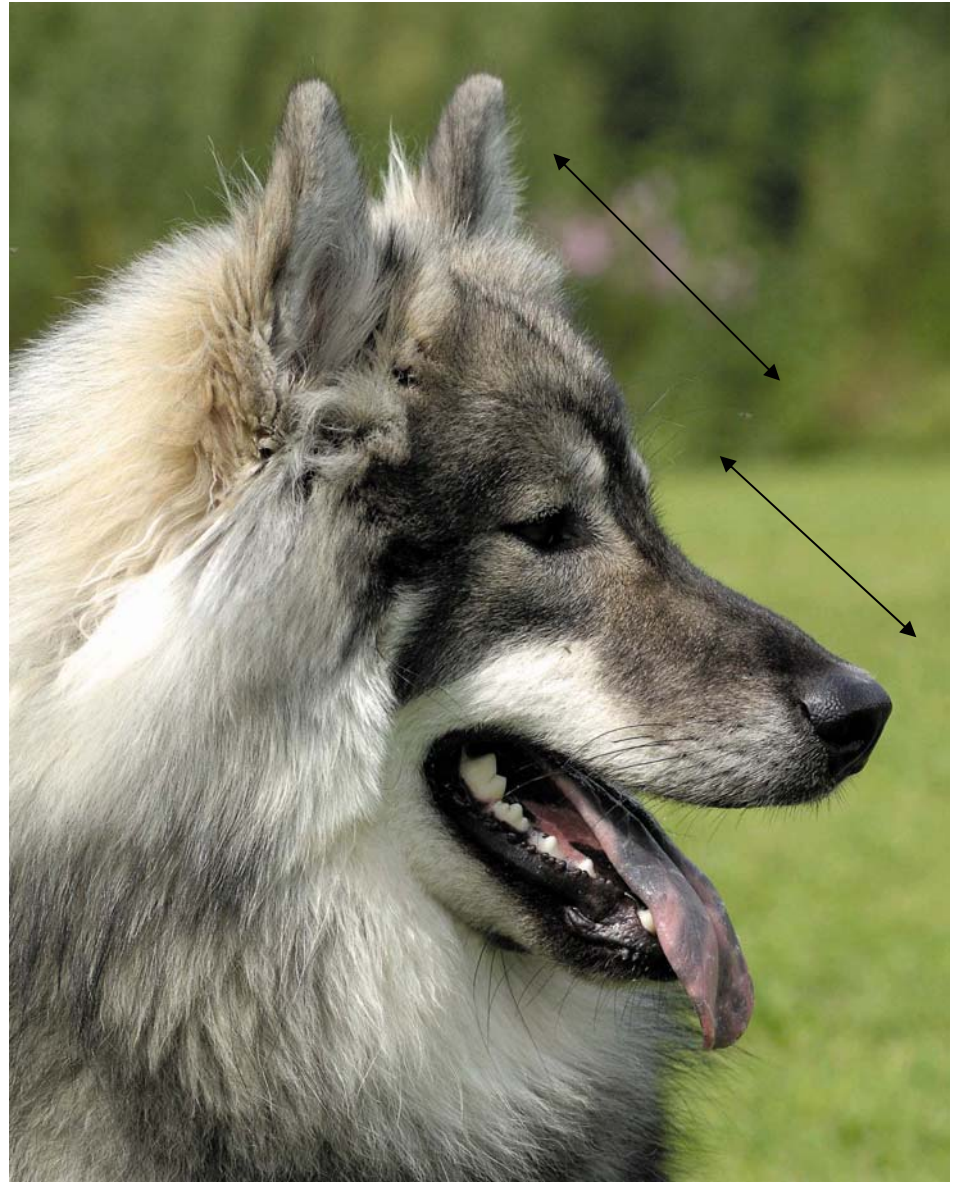
Balanced, not too broad skull.

Shape of head seen from above and in profile, wedge-shaped.



proportions of the head

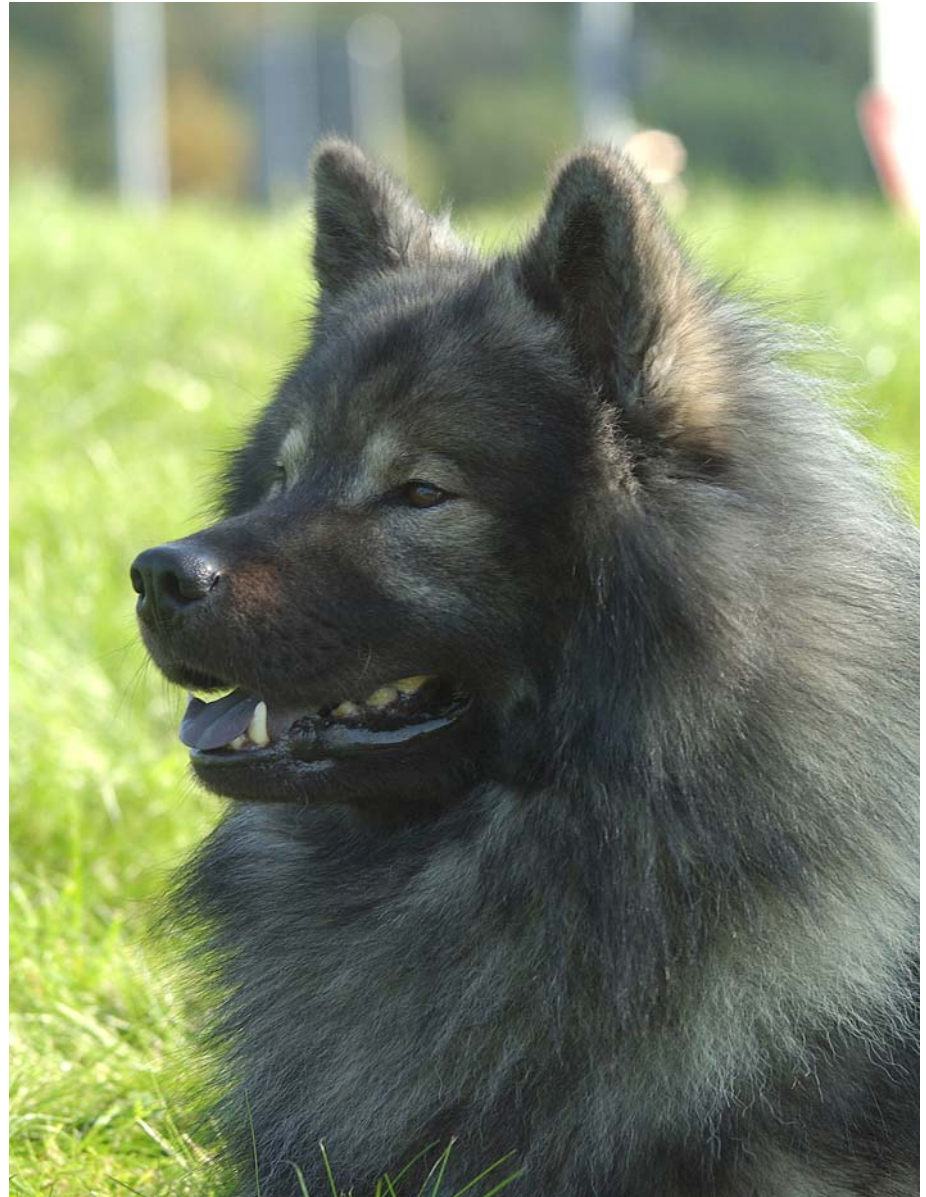
Bridge of nose and
skull run parallel.



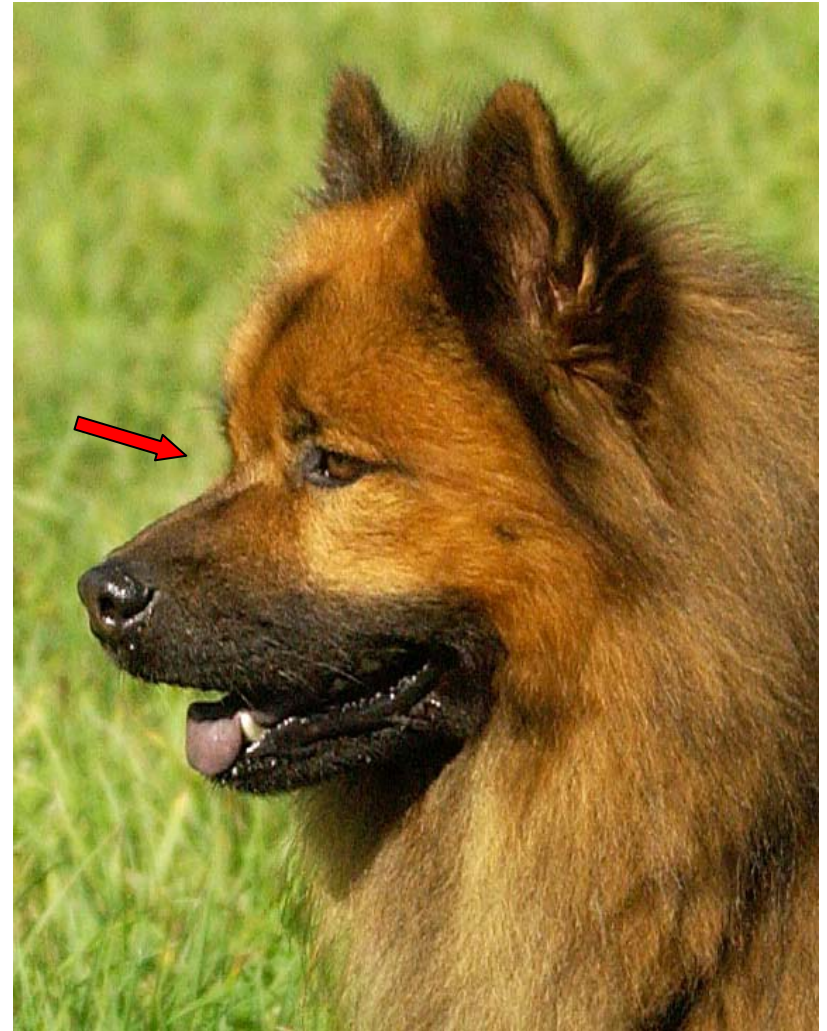
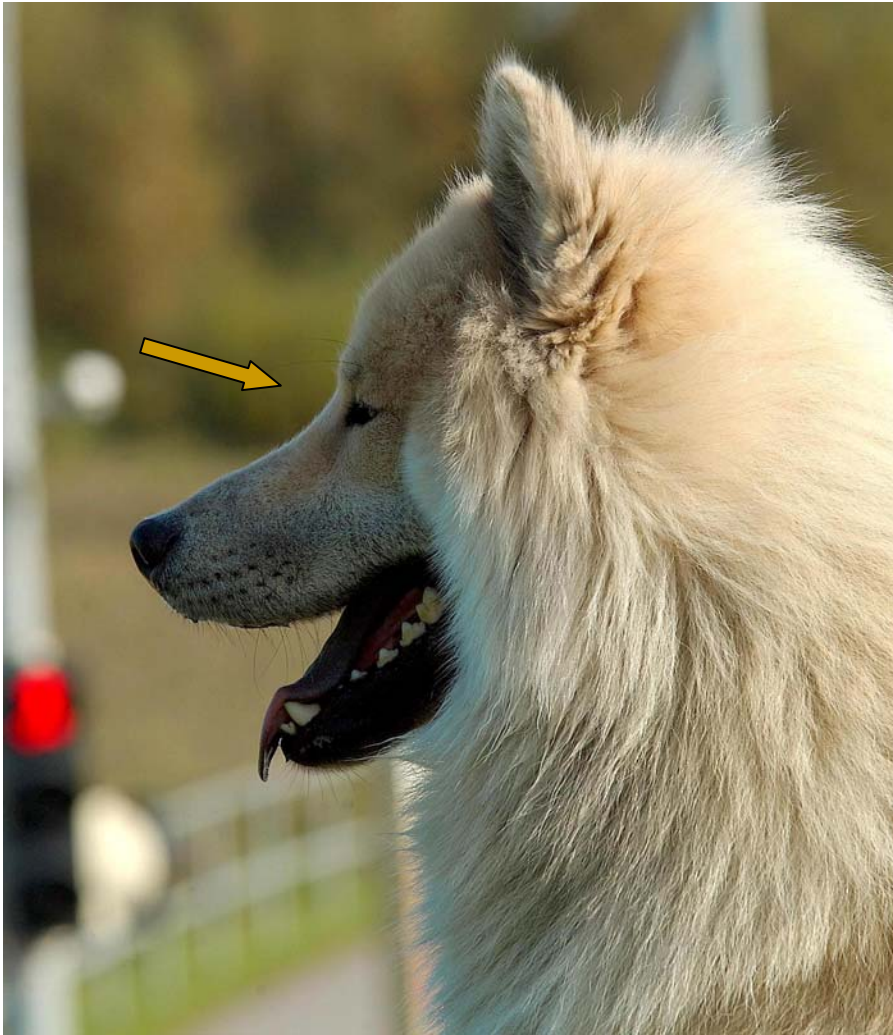
skull - occiput

CRANIAL REGION:

Flat forehead with distinct frontal furrow. Well defined occiput.



foreface: Stop: Barely defined.





Standard



Photos Vorbeck; Post

Skull - Interpretations of the standard

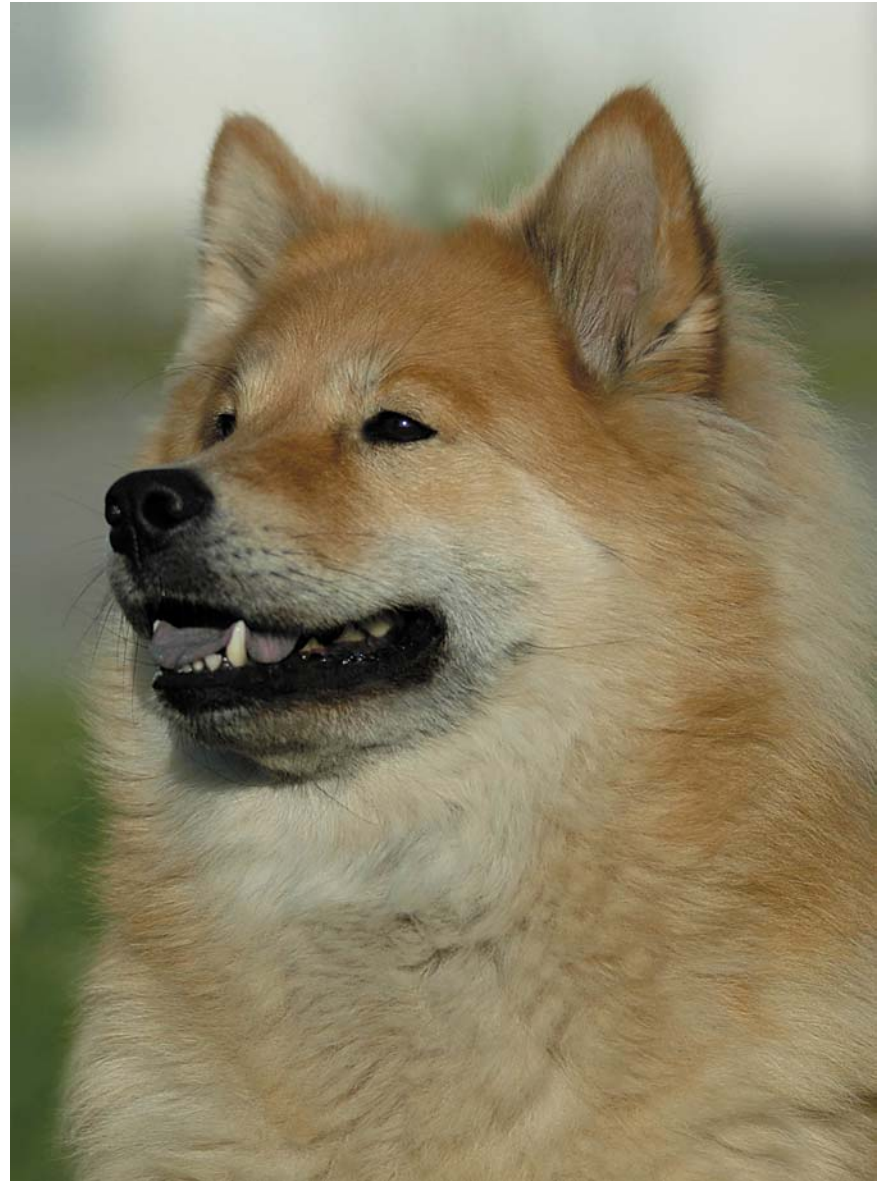
foreface

Nose: Medium size, nose leather with black pigmentation

Muzzle: Neither too coarse nor too pointed. Tapering towards the nose. Straight bridge of nose and straight mandibles.

Lips: Edges of lips tight with black pigmentation.

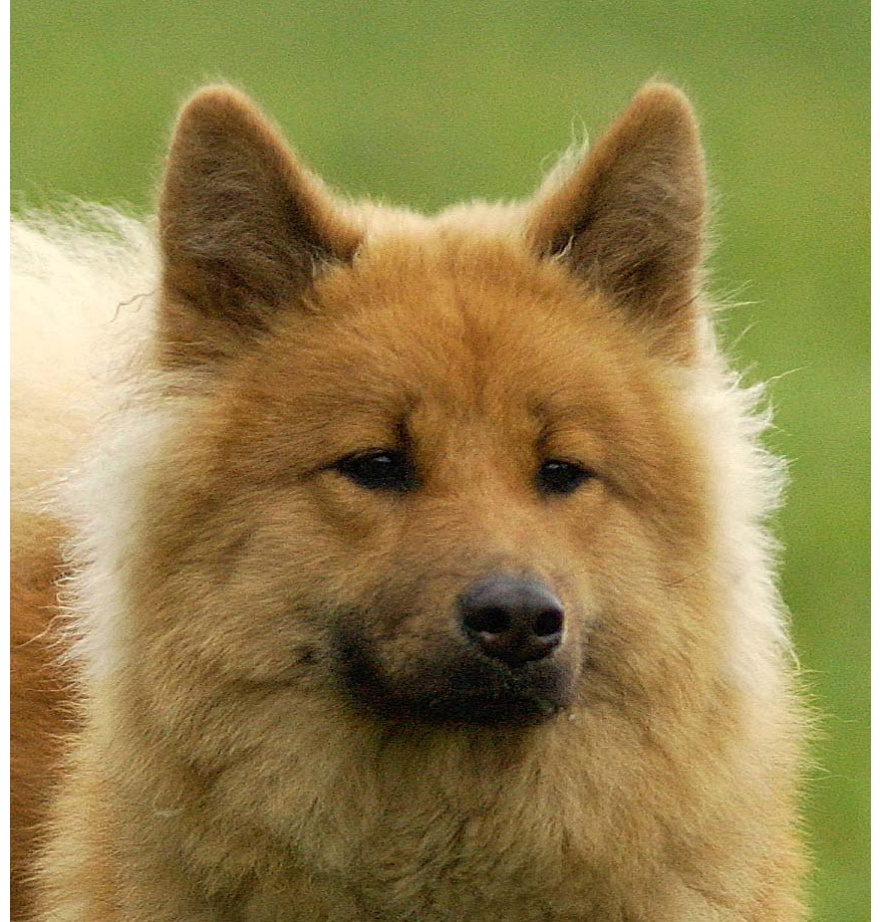
typical



foreface: border area



short muzzle



pointed muzzle

foreface: lips



typical



light grey
lips



loose lips



open lips

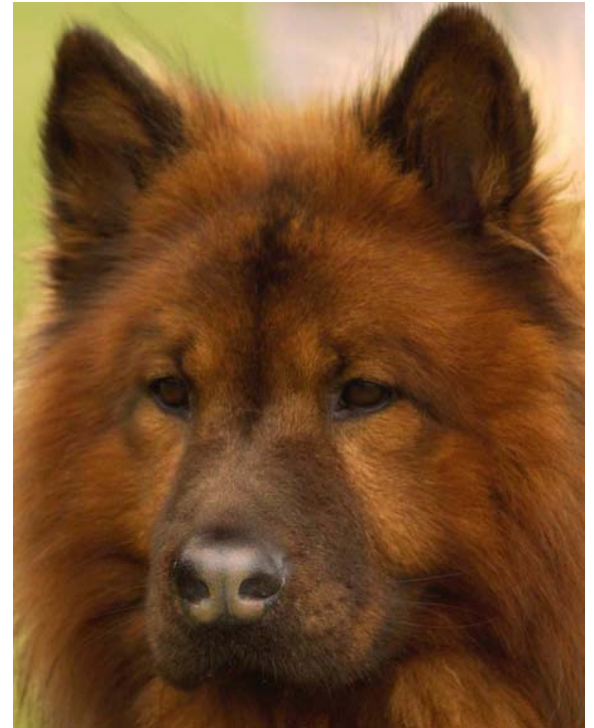
foreface: light nasal plane



light



middle

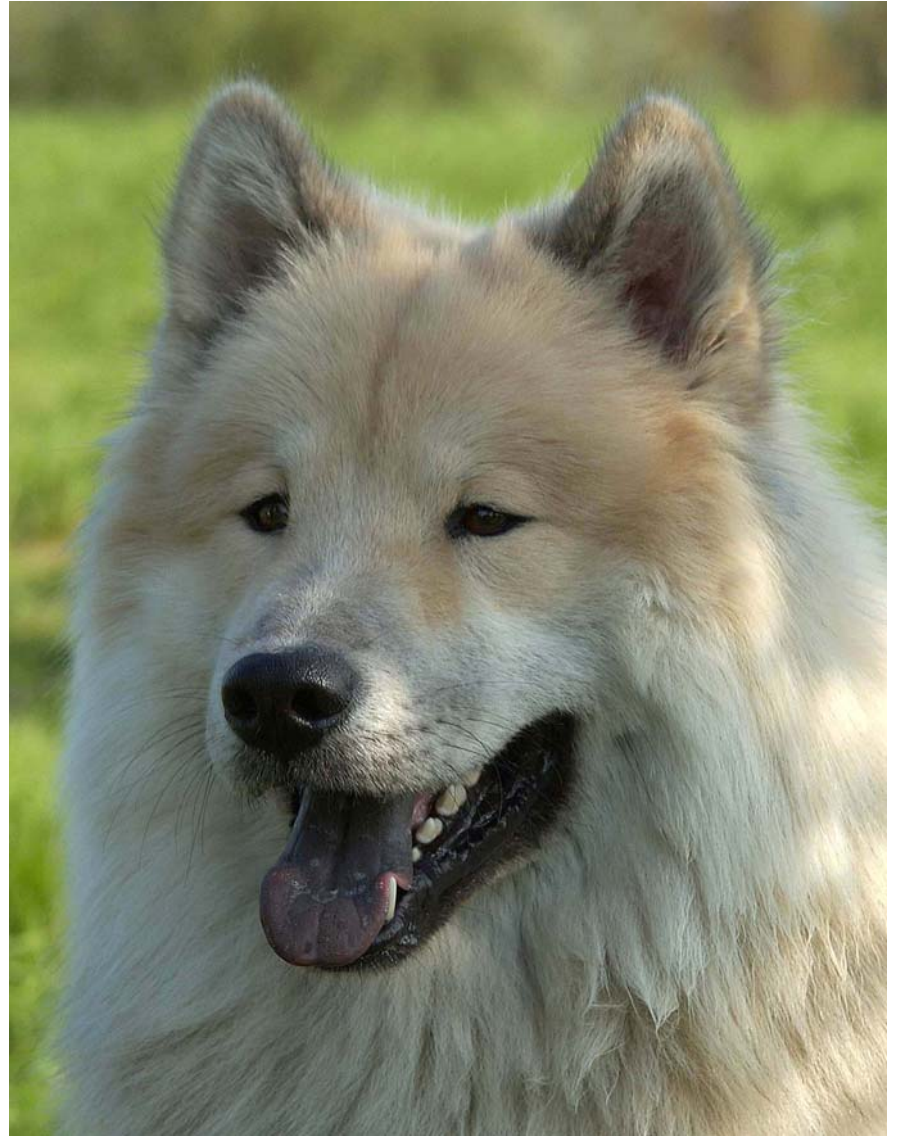


strong

foreface

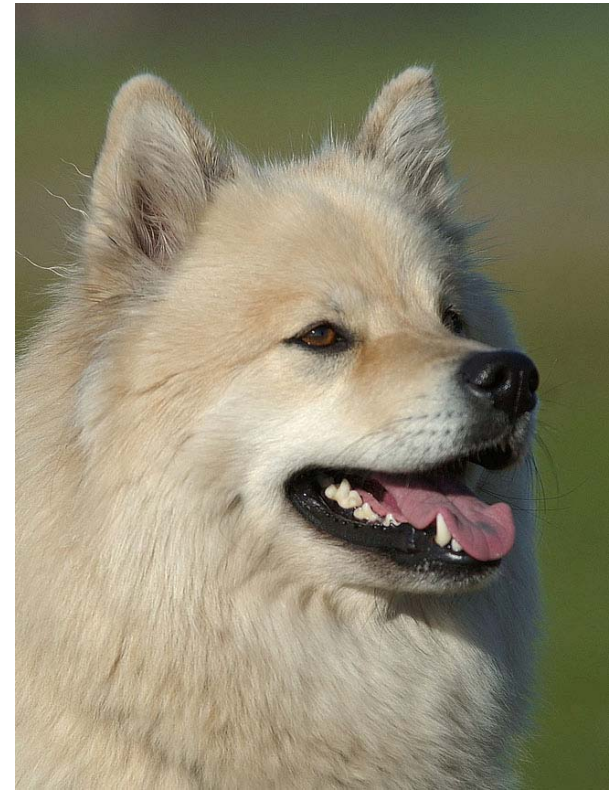
Cheeks:

hardly pronounced

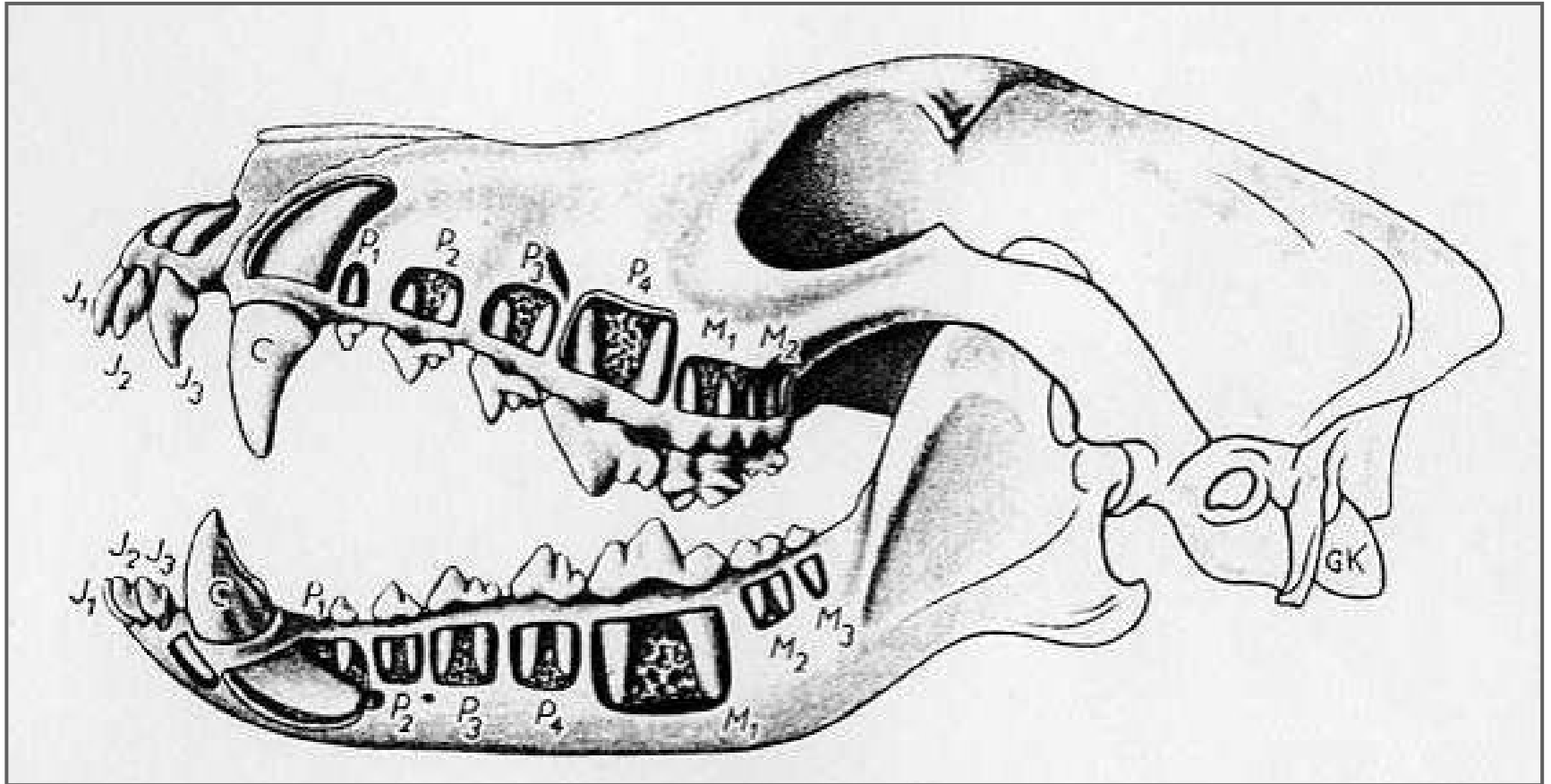


foreface: teeth

Jaws/Teeth: Strong; broad dental in lower jaw. Strong complete set of teeth (42 teeth conforming to usual tooth formation). Bite either scissor or pincer. Upper incisors either fit closely over lower incisors or they meet. Premolars and molars set in one line without gaps. All teeth must be in vertical position to jaw.



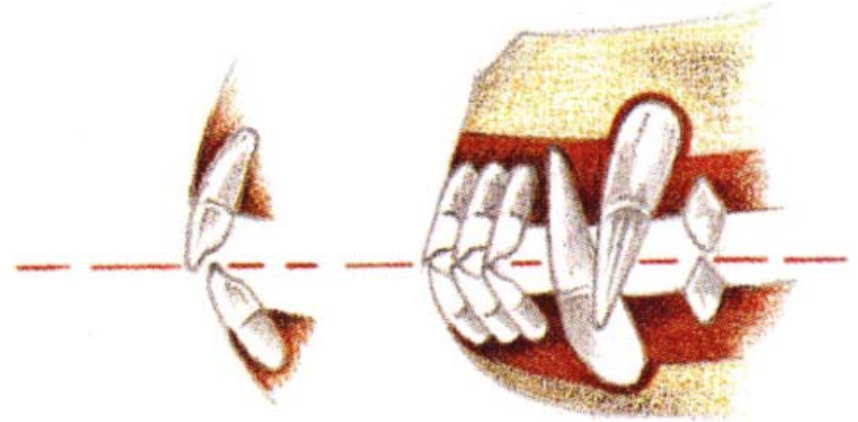
foreface - teeth



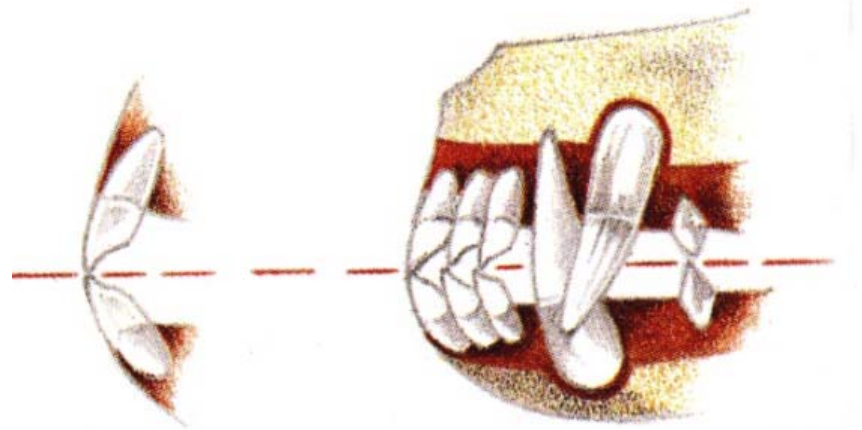
foreface: teeth



scissors bite

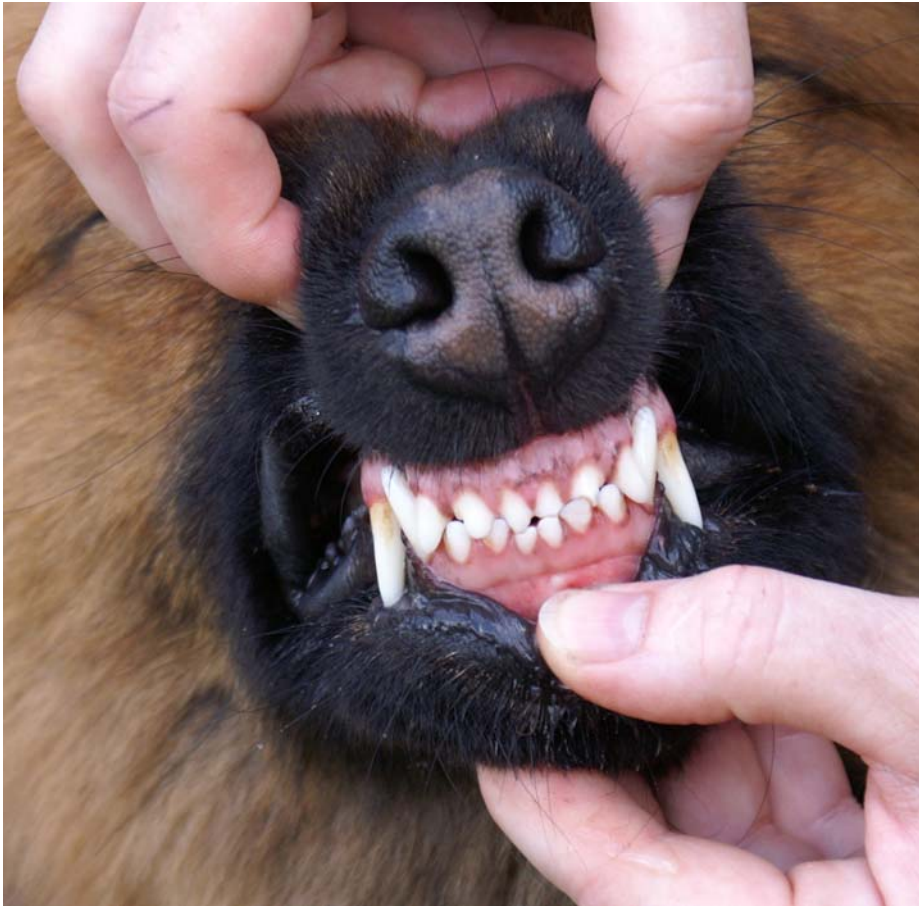


pincer bite



foreface: teeth

cross bite



overbite



undershot mouth

foreface; eyes

Eyes: Dark, medium size, not too deep set nor protruding. Lid aperture slightly slanting.

Eye-rims with black pigmentation and tight fitting.



foreface; eyes



bulging eyes



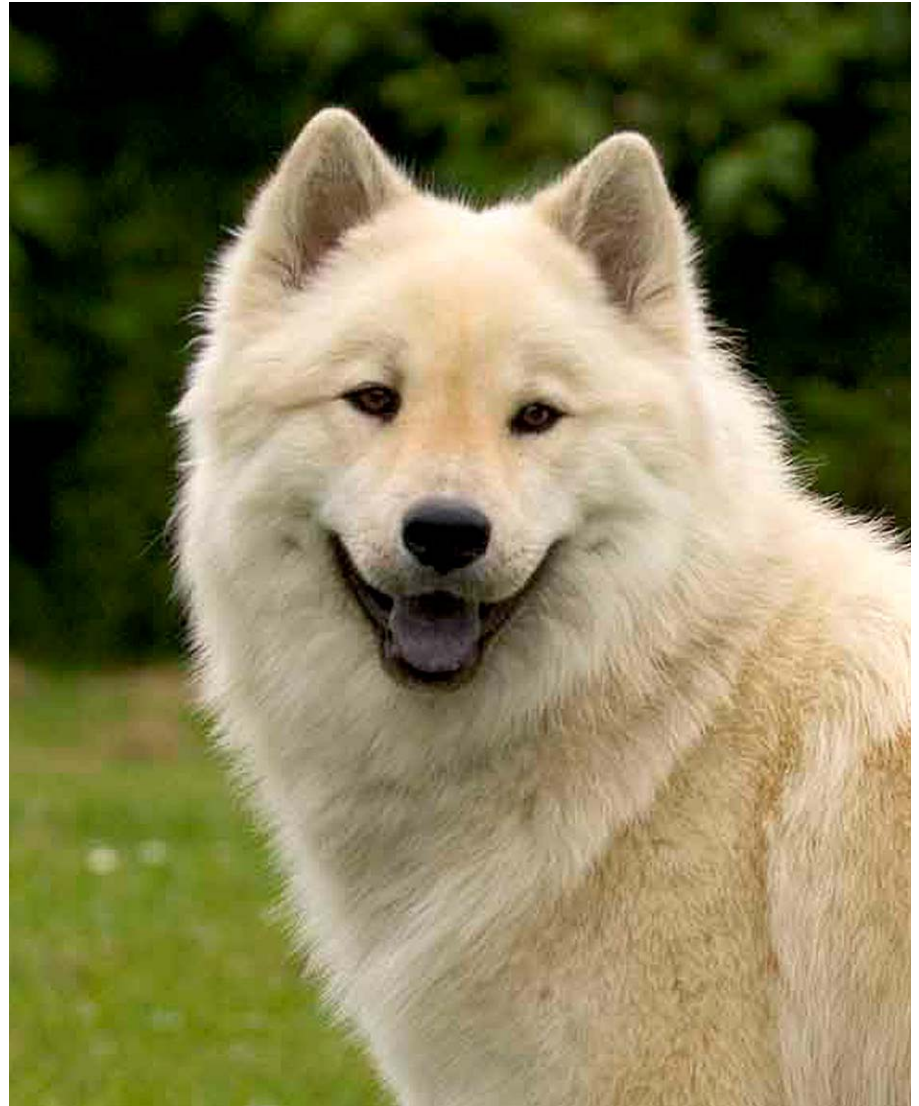
small eyes

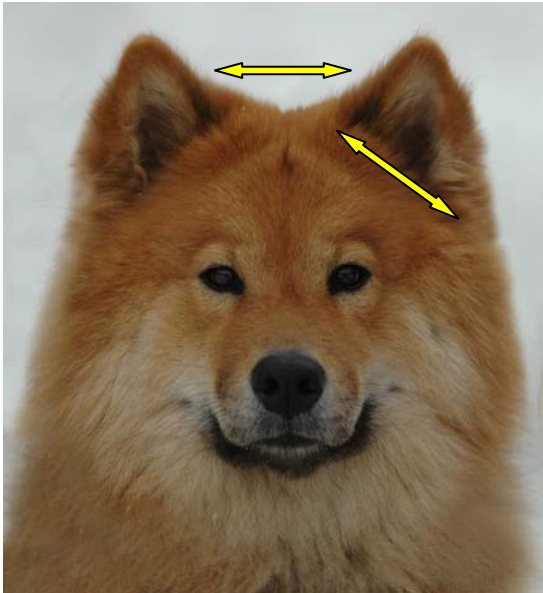


deep- set eyes

foreface: ears

Ears: Set apart by about the width of the base of an ear. Medium size and triangular. Prick ears with tips slightly rounded. Tips of ears and centre of stop should form nearly equilateral triangle.





nearly ideal set ears

Photos Vorbeck; Post

Standard Interpretation



broad set ears



narrow ears



big and narrow ears

ears



straight edges of the ears

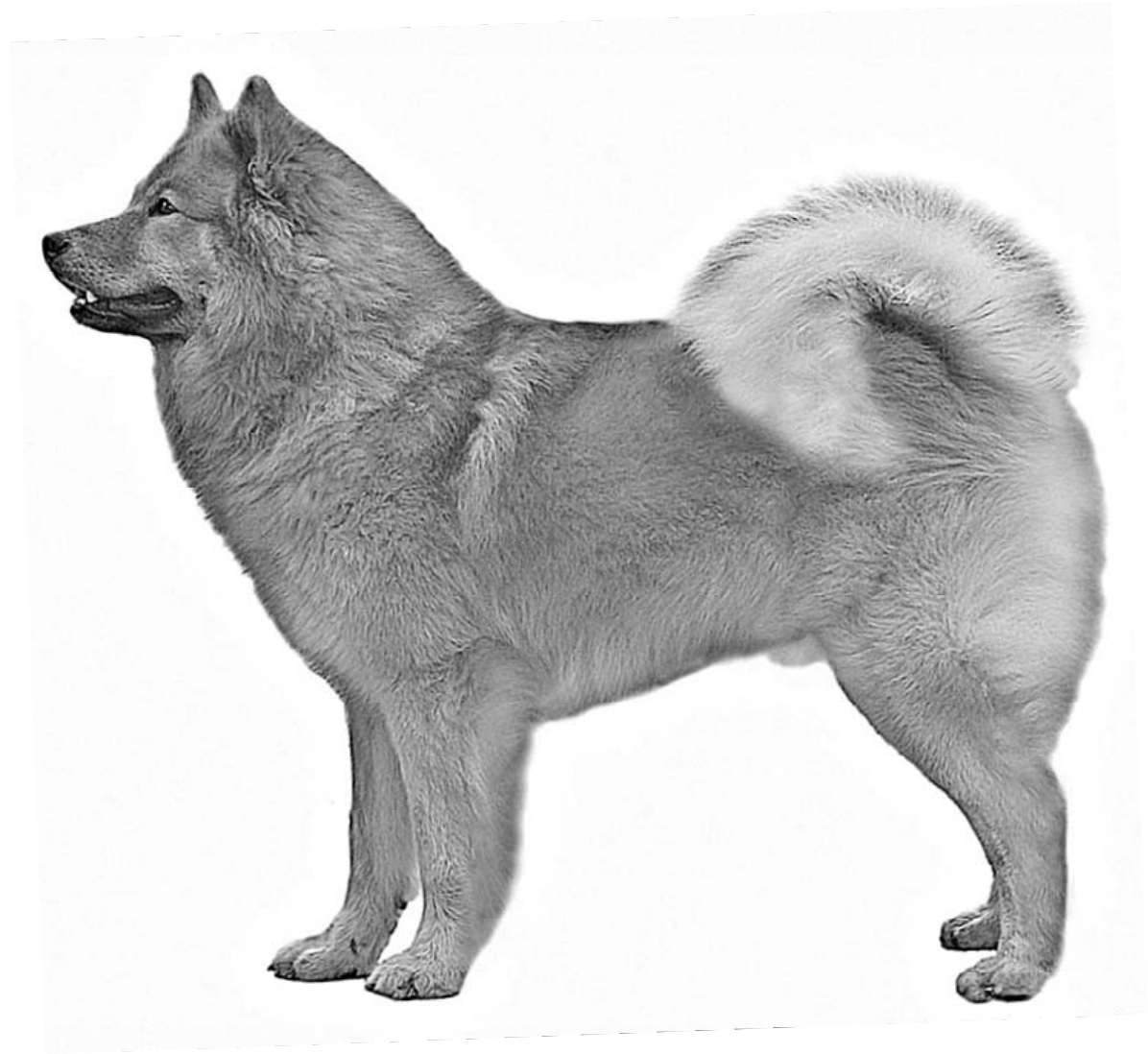


soft ears

Photo Vorbeck

neck line

NECK: Of medium length, in balance with general appearance. Well muscled. Skin on throat tight fitting. Flowing transition to body.





good neck

neck



short



long

body

General appearance:

Strong, not too short in back

Withers: pronounced

Back: Firm and straight. Very well muscled.

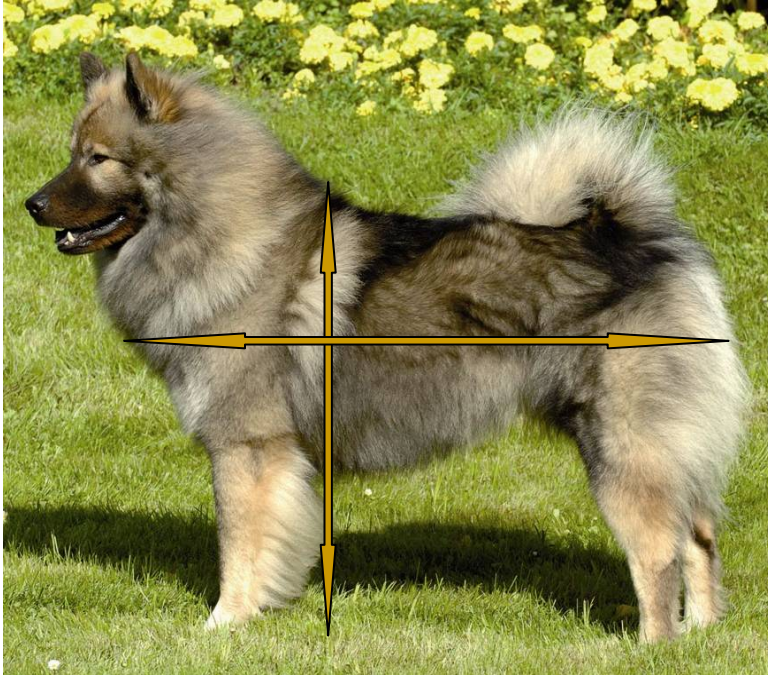
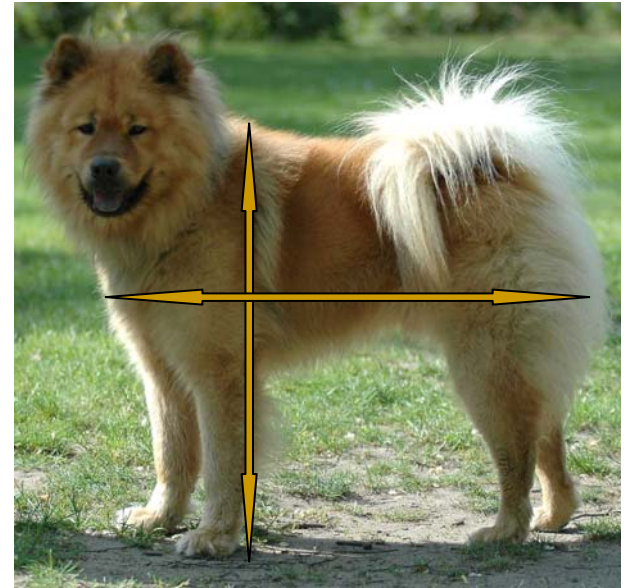
Loin: Of good length and width, very well muscled.

Croup: Straight, broad and strong



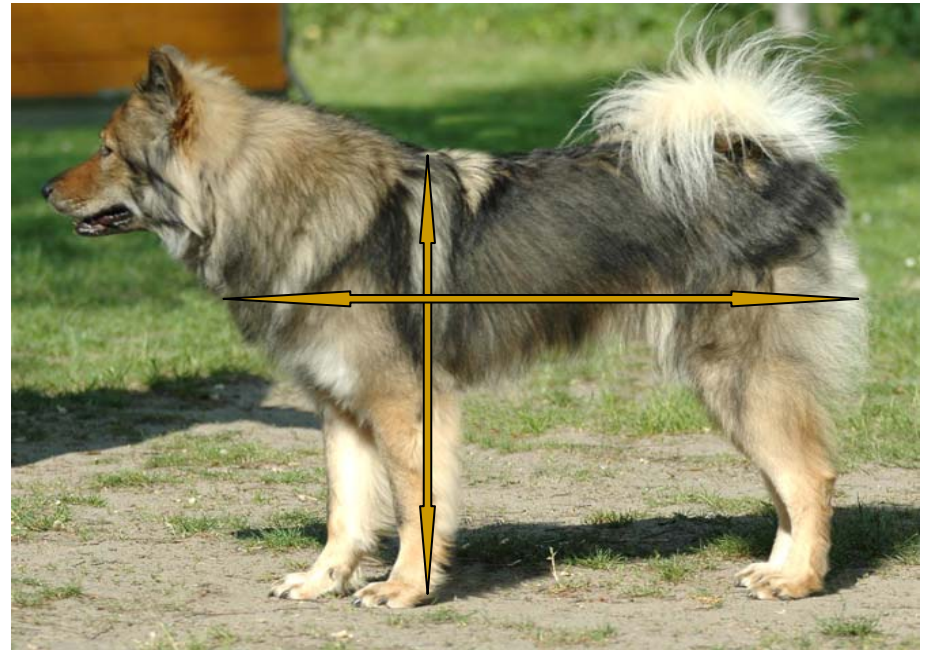
interpretations

short typ



Standard

long typ



body

TAIL: Straight set on, round and firm, of good thickness, tapering towards the tip. Bushy hair. Carried lying forward over back or bent slightly sideways or rolled up. When hanging down, reaching the hocks.



Correct,
well set tail



Short tail



Sickle tail



low set tail

body

Chest: Reaching to the elbows with oval shaped ribcage. Forechest well developed without being pronounced. Sternum long, reaching far back.

Lower line: Slight tuck up.





body - breast



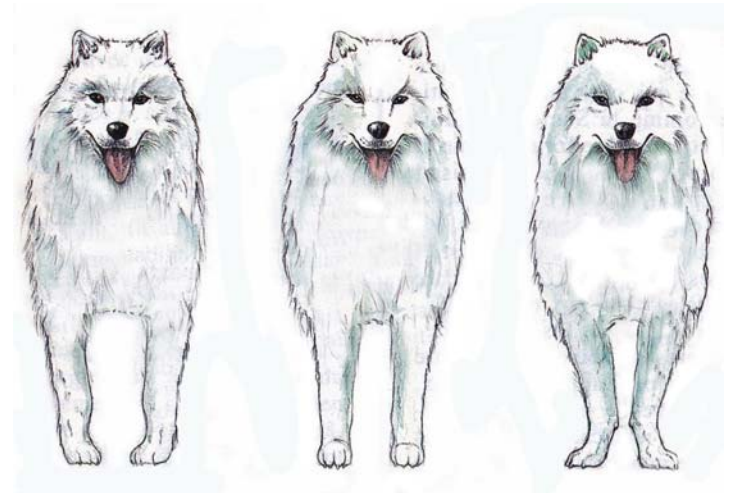
small forechest, short depth of chest, no substance



good forechest, substance.
good depth of chest,

extremity: forequaters

General
Appearance:
Seen from
front,
straight and
parallel in
position.



front



narrow front



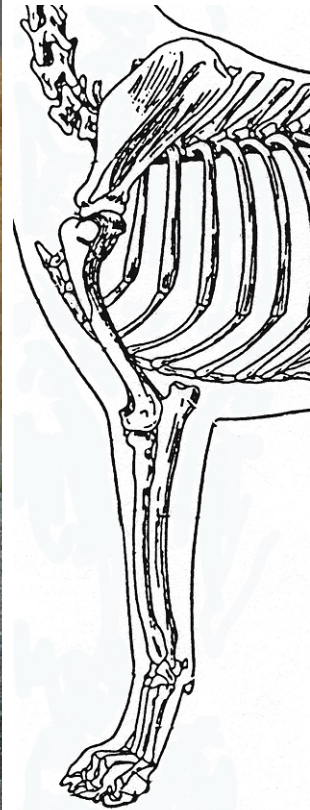
typical



open front

extremity: forequarters

Seen from side,
moderately
angulated.
Upper arm and
forearm of
almost equal
length.



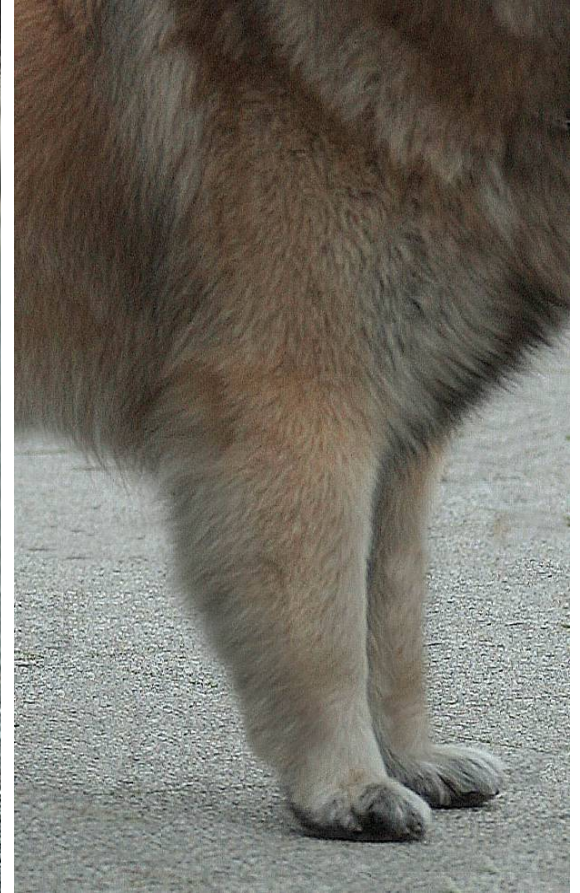
forequarters pastern



down in pastern



short pastern



straight

Photos Vorbeck

forequarters

Shoulders: Well muscled.

Lying slightly slanted

Upper arm: Medium length, well muscled.

Elbows: Close to chest

Forearm: Medium length, well muscled

Pastern joint: Strong



Photo Post

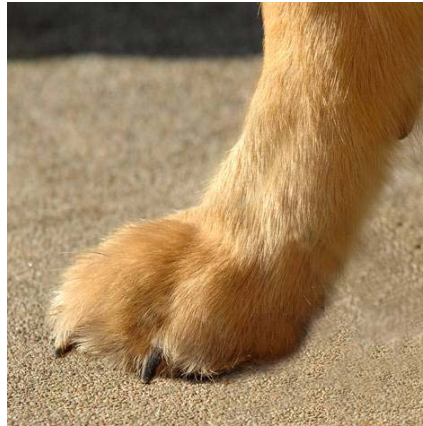
forequarters

Pastern: Medium length, quite straight seen from the front, seen from side, inclined slightly forward.



forequarters

Forefeet: Oval; tight, moderately arched toes. Strong nails with dark pigmentation.



hare foot

cat foot

typical

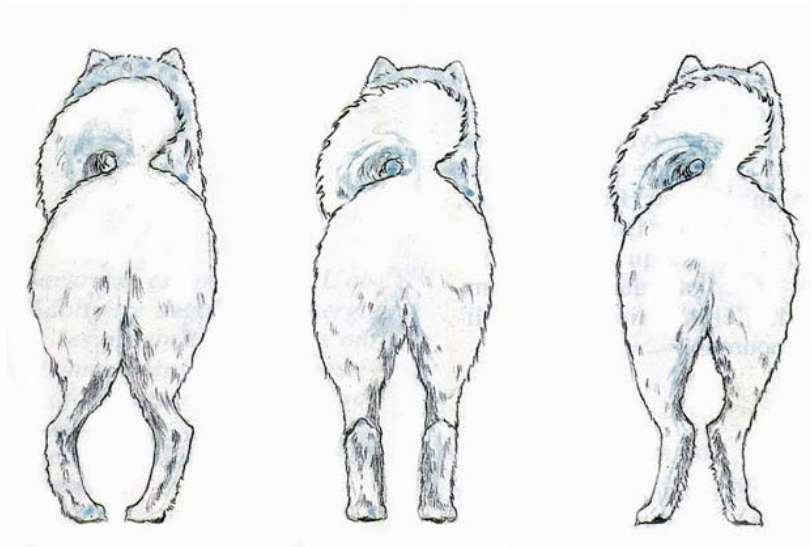
forequarters

Firm, well cushioned,
black pigmented pads.
Thick hair between
pads.



hindquarters

General appearance:
Seen from behind, set straight and parallel.



hindquarters

Pelvis: Slightly slanting

Upper thigh: Medium length with strong muscle.

Stifle: Solid, angle not too open

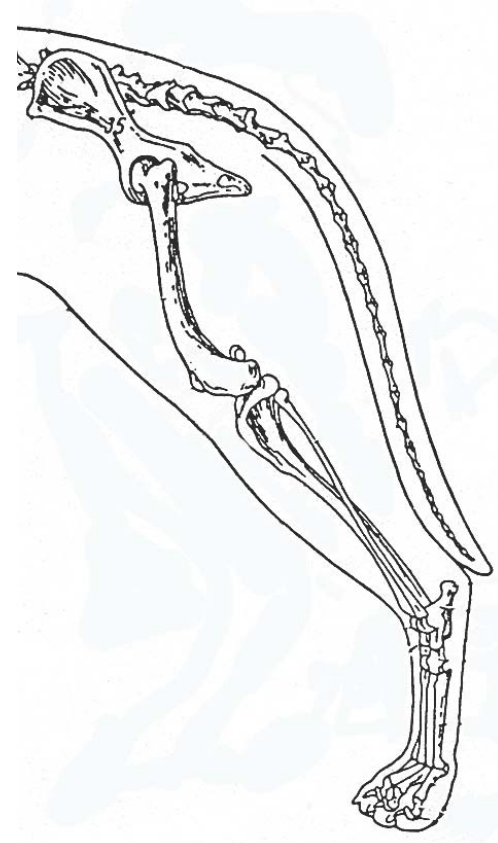
Lower Thigh: Medium length, well muscled.



Photo Vorbeck

hindquarters

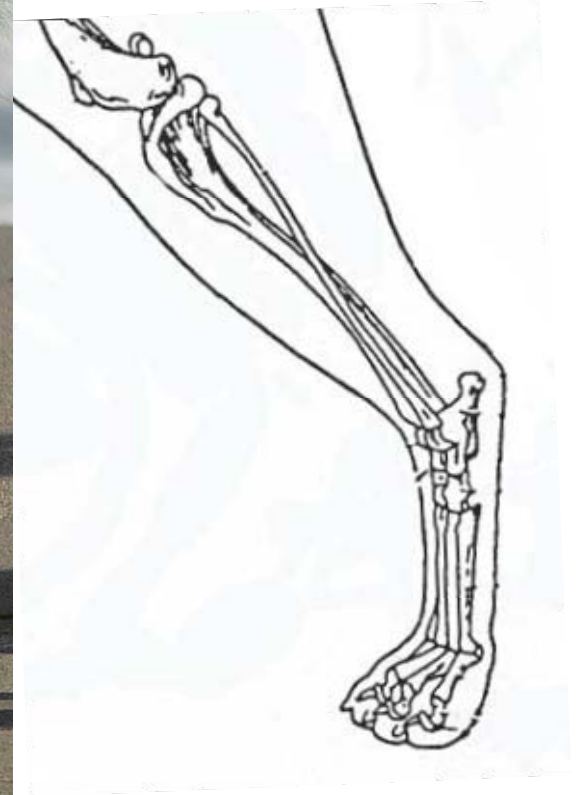
Seen from side, with moderate angulation. Upper and lower thigh of almost equal length.



hindquarters

Hock joint: Not set too low, stable, neither turning in nor out.

Hock
(Metatarsus):
Good length and breadth, vertical when seen from side.



hindquarters angulation



sickle angle



very good angle



straight hindquarters

hindquarters

Hind feet: Oval; tight, moderately arched toes.
Strong nails with dark pigmentation.



cat foot



hare foot



typical

hindquarters

Firm, well cushioned,
black pigmented
pads. Thick hair
between pads.

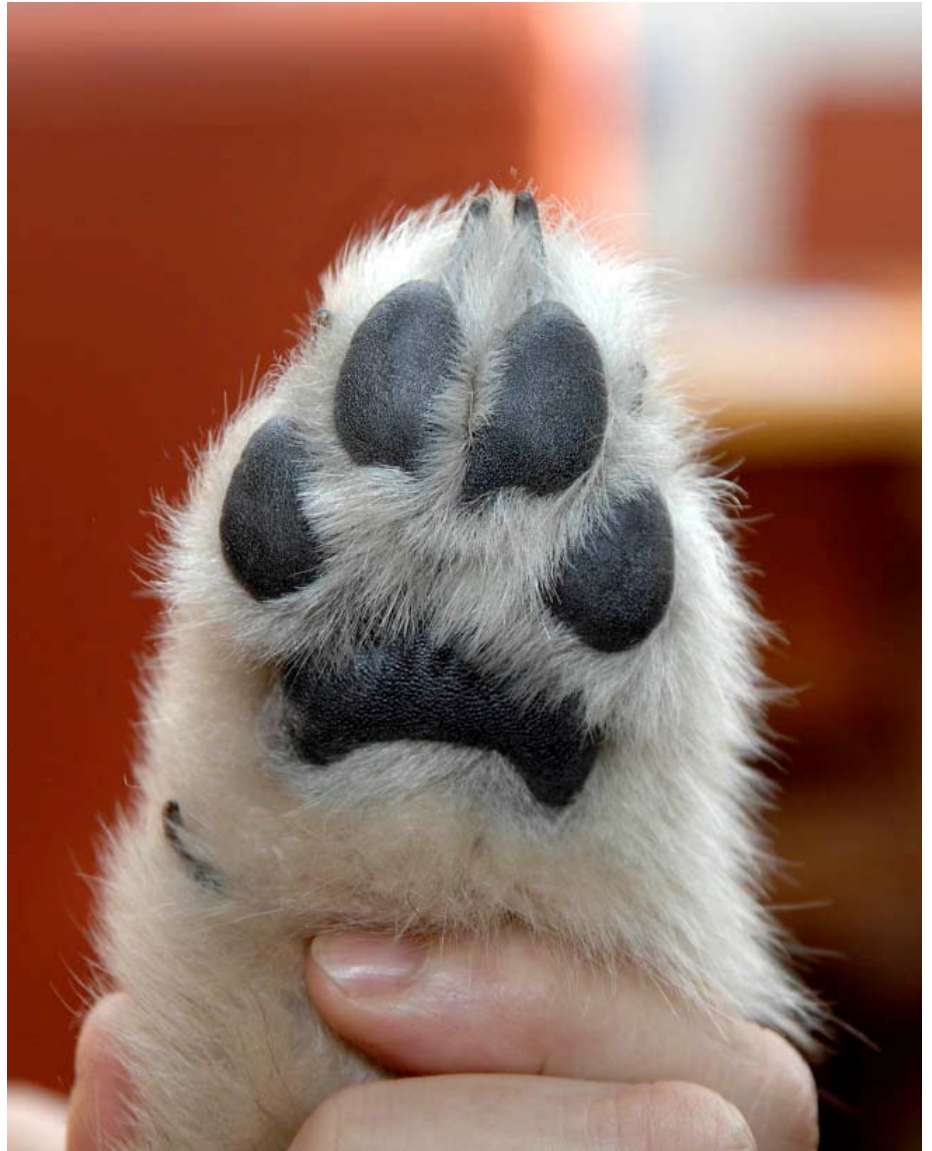


Photo Vorbeck



GAIT: Ground
covering with plenty
of drive and good
forward stride





skin and coat

SKIN: Tight,
pigmented

COAT:

HAIR: All over the
body in a thick
undercoat and a
medium long,
loosely lying,
guard hair. Short
coat on muzzle,
face, ears and
front of legs.



skin and coat

Tail, back of front legs (feathers) and hind legs (breeches) covered with long hair. Coat on neck only slightly longer than on body, not forming a mane.



typical

mane

COLOUR: All colours and colour combinations are permitted with the exception of pure white, white patches or liver colour.



not permitted

cream



Photo Post

cream red



Photo Vorbeck

red cream



Photo Vorbeck

red cream with mask



red



dark red



Photo Burk

cream



Photo Vorbeck

cream grey



Photo Vorbeck

light wolf grey



Photo Vorbeck

wolf grey



dark wolf grey



dark wolf grey with light mask



Photo Vorbeck

agouti with light mask



Photo Vorbeck

agouti



dark agouti



Photo Vorbeck

black and cream



black



SIZE AND WEIGHT:

- Height at withers: Dogs: 52 – 60 cm
- Bitches: 48 – 56 cm
- Weight: Dogs: 22 – 32 kg
- Bitches: 18 – 26 kg
- The balance of the proportions is most important but the ideals to aim for are medium height and weight.
- Height at withers: Dogs: 56 cm
- Bitches: 52 cm
- Weight: Dogs: 26 kg
- Bitches: 22 kg

-
- **ELIMINATING FAULTS:**
 - Lack of correct gender characteristics
 - Absence of a single or several incisors or canines; absence of a single or several premolars 3 or 4, or single or several molars 1 or 2. Anomalies in bite.
 - Ectropion, entropion; eye too deep set or too small.
 - Distichiasis (eyelashes arranged in two rows)
 - Semi-pricked or pendulous ears
 - Kinky tail
 - Strong lack of pigment
 - Nervousness, shyness, excessive suspiciousness
 - Aggressiveness
 - **N.B.:** Male animals should have two apparently normal testicles fully descended into the scrotum.
-

FAULTS: Any departure from the foregoing points should be considered a fault and the seriousness with which the fault should be regarded should be in exact proportion to its degree.





Photo Vorbeck

Have a nice time!