



THE GEODE

Lakeside Gem and Mineral Club, Inc. (LGMC)

www.lakesidegemandmineralclub.com E-mail: lakesidegemandmineralclub@yahoo.com

Volume 81, Issue 7

August 2014

Club purpose: Promote activities of mutual interest for collecting and displaying of gems and minerals.

Address: Lakeside Gem & Mineral Club, Inc., PO Box 6652, Kennewick, WA 99336-0603

Club Meetings in August

August 6, 2014 Club meeting – 6:30 social, 7:00 p.m. meeting.

Seventh Day Adventist Church, 7305 W 10th Ave., Kennewick, WA

Refreshments: Marty Casto, Lisa Cauble, Julia Gifford, Carol Devine.

Refreshments Coordinator: Mary Lou Omstead. *Thank you!*

Program: Ellensburg's Famous Blue Agates

Presenter: Nick Zentner, Central Washington University Geology Department

Programs Coordinator: Kathryn Larson

Bragging table theme: blue rocks

What is it? Members are invited to bring one rock or mineral per meeting for identification

August 12, 2014 Junior Club meeting -- 6:30 pm

Banner Bank, 203 W 1st Ave., Kennewick, WA; Junior Club Leader Thora Trumbo (509) 582-4297

August 25, 2014:

Board meeting – 6:30 pm; Seventh Day Adventist Church (address above). Members welcome.



Come share your love of rock and mineral collecting at the Club rock, gem and mineral exhibit at the Fair. See sign-up sheet at the Aug 6th meeting, or contact Kathryn Larson at 586-1203.

2014 NFMS Rock & Gem Show



Hermiston Conference Center
415 S. Highway 395

- Friday Aug. 15th 10am – 6pm
NFMS Annual Meeting 4:00 pm
- Saturday Aug. 16th 10am – 5pm
- Sunday Aug. 17th 10am – 4pm

Admission: \$3.50/day or \$9.00/all 3 days
(Ages 12 & under FREE when accompanied by an adult.)

GEODE Submission Deadlines:

- 15th – member articles & photos
- Day after Board mtg. - officer & committee contributions

E-mail them to carol.devine2@frontier.com

or call (509) 967-0589 to make other arrangements

In this Issue	
2	July 21st Board Meeting minutes
3	June 4th Club Meeting minutes
4	August meeting program preview
5	August-September regional events
6	June club program highlights
7	Land use access updates Library feature of the month Club leadership opportunities available
The Junior Club newsletter and August 2-3 field trip flier are attached.	

GEODE Reprint Permission:

Permission to reprint is granted, provided appropriate credit is given to the source.

Member contact information updates:

Please notify Pat Lambert or Carol Devine.

NOTE: Minutes of the June 2014 Board meeting were not received in time for this issue. Will be published in September.

Minutes – Board meeting – July 21, 2014

Present: (Board Members) Dave Westland, Marty Casto, Larry Hulstrom, Steve Shoemaker, Yvonne Legare, Bert Kae-Jé, Thora Trumbo, Carol Devine. (Quorum present.)
(Members) Kathryn Larson, Evelyn Cataldo, Mary Lou Omstead, Heather Moon.



Martin Casto,
Vice-President

Club Vice-President Marty Casto called the meeting to order at 6:30 p.m.

Old Business

- **Treasurer's report** – Bert Kae-Jé. Printed reports Jan-July, 2014 were reviewed. NFMS has reimbursed LGMC for the cost of renting Building 16 for the NFMS/ALAA meetings.
- **Equipment in Cabbng Lab** - Steve Shoemaker has inspected the equipment, which is ready to use. Half the equipment will require maintenance in a year or so.
- **Benton Franklin Fair exhibit (Aug 19-23)** – Kathryn Larson reported. Staffing of the exhibit, Junior Club contributions, and supplies to sell were reviewed. (See article this Geode.)
- **Fall potluck picnic (Sunday Sept 21, 10am setup, 12 noon picnic followed by auction)** – Mary Lou Omstead reported that the gazebo area at Keewaydin Park, Kennewick is reserved. Fried chicken and beverages will be provided by the club. Five lots of rocks can be offered for auction per family (30% of receipts to club). All sellers except rockhound estates (0% of receipts to club) must be members of LGMC. Steve Shoemaker offers to help transport rockhound estate materials to the event.
- **Programs** – September program is in planning. Members interested in presented are invited to contact Kathryn Larson.
- **Officer elections** – Nominating committee consists of Darla Shoemaker, Carol Devine, and Kathryn Larson. Positions of **President, Vice President**, and one **Director** are up for election. Marty Casto will serve in the Past President role on behalf of Dave Westland (who is retiring from his dental practice and plans extensive travel!). Thora Trumbo seeks an Assistant to gradually assume the **Junior Club Leader** role. The **Assistant Federation Representative** position will be filled by Board appointment. Club members interested in serving are invited to contact a member of the Nominating Committee by August 10th. Candidates will be announced in the September Geode, elections held at the October club meeting.

New Business

- **2014 NFMS Rock & Gem Show & Convention**, Hermiston (Aug 15-17) -- Don Snyder has agreed to load, transport, pick up and store 16 exhibit cases and sawhorses being loaned to Hatrockhound Club. He needs a few volunteers to assist.
- **Junior Club field trip** – Thora Trumbo reported that a field trip requiring bus transport is in planning. Suggests all Club members could be invited to participate, space permitting.
- **Field trip liability waiver** – Club policy is that a liability waiver must be signed by each person participating in any Club field trip. Youth 15 years and younger must be accompanied by an adult on Club field trips.
- **Rockhound Legislative Advocate** – Evelyn Cataldo suggests the Club help Members learn about pending land use actions so they can provide feedback to legislative agencies. Proposed: a) the Club website manager, Sean Hall, build in a Club list serve function, and b) the Board appoint a Rockhound Legislative Advocate to receive and forward notices of proposed land use action through the website list serve.
- **2015 LGMC Gem & Mineral Show** – Some of our longstanding dealers will change. Members attending gem shows and regional events this fall are encouraged to notify Evelyn Cataldo to identify recommended dealers. Need good inventory of high end material and more readily available items, reasonable prices, and to be easy to work with.



AFMS Award to LGMC – The Club's April 2014 program "Gorgeous Garnets" has been awarded first place in the 2014 AFMS Program Competition, Field Collecting Category. It will be offered by AFMS through the seven regional organizations to rock clubs across the nation late this year. Contributors: Carol Devine, Martin Casto, Wayne Larson, Larry Hulstrom, Steve Shoemaker, Jerry Johnson, Evelyn Cataldo and others.

Next Meetings

- **Club meeting:** August 6th, 7:00 p.m. (social at 6:30). Program: Ellensburg Blue Agates. Presenter: Nick Zentner, CWU Geology Dept. Bragging table theme: blue rocks.
- **Board meeting:** August 25, 2014 at 6:30 p.m. Club members are invited and welcome.

The meeting adjourned at 8:30 p.m.

Carol Devine for Michelle Isom, Secretary

Minutes – Club Meeting – June 4, 2014

Club President Dave Westland opened the meeting at 7:00 p.m.

Guests were introduced and welcomed.

Program

- **Geology of Eastern Washington, with Emphasis on Petrified Wood.** Presenter: Jack Powell, State Field Geologist (retired), WA Dept. of Natural Resources.
- **Bragging table:** favorite item you have collected in the field in Eastern Washington

Treasurer's report: Bert Kae-Jé. Dave Westland announced the Club should plan to build 5 to 10 new display cases each year to replace those that are no longer useful. He noted the Board has approved a method to pay outside program speakers a stipend.



David Westland
Club President

Announcements

- **2013/14 NW Federation Directories** available, \$10. See Larry Hulstrom.
- **Cataldo's Rock Sale:** Saturday, July 19th, 8 am – 4 pm.
- **Adopt a Highway:** The club has provided community service by cleaning Highway 182 at Dallas Road late spring and early fall for many years. We need a chairperson to coordinate this activity. Judi Allison volunteers to assist the chairperson.
- **Lost electric drill:** The battery-powered Milwaukee electric drill Fred Petragallo brought to the April rock show has not been located. If you know its whereabouts, please let Fred or Evelyn Cataldo know.
- **Streamline exhibit case setup:** The modular storage concept suggested by Evelyn Cataldo was discussed. All components of an exhibit case would be stored together. • The Board asks for volunteers to design blueprints for the modular storage, then evaluate and report on feasibility and expense of the project. Tom Black offers his help. • Need to pull out and reorganize the components for each of the exhibit cases prior to the NFMS show.
- **Fall Potluck Picnic and Auction:** Sunday, Sept. 21st, Keewaydin Park Gazebo Area. Fried chicken & beverages provided. Members please bring side dishes and desserts.
- **Benton Franklin Fair & Rodeo:** Aug 19-23rd. Kathryn Larson is coordinating our Club exhibit at the Fair. We have 6 exhibit cases to fill, one of which will display a range of talents. We need 2-3 volunteers per 3 hour shift during open hours of the fair. A sign-up sheet was passed around and available during the break. The Club will obtain a round-trip bus ticket and a fair ticket for volunteers. Jerry Senn will help with the cases.
- **Officer elections announced.** Positions of President, Vice-President, and Director will be filled by general election at the October meeting. Nominating committee of Carol Devine, Darla Shoemaker, and (to be named) was announced. Please let Dave, Martin Casto, or the nominating committee know of your interest in serving in any of these leadership roles.
- **Classes:** The Cataldos report a late June 3 day trip to Virgin Valley, NV to collect opals is in planning. Sign up with them to receive updates. Chris Sorenson, Marvin Barger, and Mary Lou Omstead reported on recent bead making and knapping, and the upcoming silversmithing classes. Hancock Station is now fully booked.
- **2014 NFMS Annual Gem & Mineral Show** – Judi Allison reported on the Hatrockhound Club's preparations for the August show. Asks to borrow 16 exhibit cases and requests transport to/from Hermiston. Needs help stuffing straws identifying mystery prizes for children.
- **Club Library:** Many recent acquisitions were on display. They will be available for check-out beginning with the August meeting. Librarian is Jean Smith. Call her at 586-8409 to ask that she bring the book you want to borrow.
- **Refreshments and Clean Up:** Need volunteers to provide refreshments in August. Need to remove trash from the kitchen before leaving the building after each meeting.

Door prizes: Recipients were Dave Westland, John Weed. Rocks: Evelyn Cataldo, Bert Kae-Jé, and ?.

Next Meeting: Aug 6, 2014, 6:30 social, 7:00 pm meeting

- **Program:** Ellensburg's Famous Blue Agates. Guest speaker: Nick Zentner, CWU Geology Dept.

The meeting adjourned at 9 p.m. Michelle Isom, Secretary

August Meeting Program

Ellensburg's Famous Blue Agates

Kathryn Larson, Meeting Programs Chair

CWU Geology's Nick Zentner will be our featured program speaker at the August 6th Club meeting. His presentation on "Ellensburg's Famous Blue Agates" will include:

- Local bedrock layers in central Washington
- The formation of blue agates in the Teanaway Basalt
- River transportation of the agates to Kittitas Valley

Dr. Zentner has been with CWU Geology Department since 1992.

The deep blue color and extreme hardness for an agate mark it as an Ellensburg blue. This is one of the rare blue agates in the world. It is becoming increasingly rare as virtually all of the hunting ground is now located on private property.



Bring your favorite blue rocks, especially your Ellensburg blue agates, to show off at the bragging table.

LGMC Board of Directors - July 2014 (outgoing officers highlighted in blue)

Officers E-mail: lakesidegemandmineralclub@yahoo.com

President	Dave Westland – 735-9678	Director	Steve Shoemaker – 521-5623
Vice President	Marty Casto – 628-3509	Director*	Yvonne Legare – 585-5514
Secretary	Michelle Isom – 528-7638	Federation Representative	Larry Hulstrom – 783-6210
Treasurer	Bert Kae-Jé – 582-3766	Junior Club Leader	Thora Trumbo – 582-4297
Past President	Larry Hulstrom – 783-6210	Bulletin Editor	Carol Devine – 967-0589

Phone numbers are all Area Code 509. By-Laws specify two year elected terms of office for Board Members, beginning in November. President, Vice President and one Director begin in even numbered years. Secretary, Treasurer and one Director (*) begin in odd numbered years. Federation Representative, Junior Club Leader, Bulletin Editor and Committee Chairs are Board-approved volunteers. By-Laws at www.lakesidegemandmineralclub.com

LGMC Committee Chairs – July 2014

To get acquainted, get involved. New talent always welcome!

Field Trips	Ammon Bruce – 551-6526	Memberships	Pat Lambert – 582-6028
	Heather Moon – 586-1978	Historian	Mary Lou Omstead
Meeting Programs	Kathryn Larson – 586-1203	Meeting Refreshments	Mary Lou Omstead – 783-2798
Website Manager	Sean Hall – 788-5130 Prosser	Door Prizes/Speaker Gifts	(volunteer needed beg Aug mtg)
Librarian	Jean Smith – 586-8409	Sunshine Chairman	Pat Harmon – (757) 328-8126
Junior Club Leader	Thora Trumbo – 582-4297	Gem & Mineral Identification	Club members



Resources for Club Members

- **Rock saw oil.** Max Hatfield - (509) 582-6028; Ralph Eichner – (509) 582-9017
- **Tumbling grit.** \$2/lb. For every 5 lbs. of tumbled rock you donate, get 1 lb. of grit free. Frank & Mary Lou Omstead - (509) 783-2798

Dates		August 2014 Regional Events	
2	Field trip – Shelton Rock & Mineral Society Salmon Creek (agate, petr. wood, coprolites)	Meets on I-5 at the park & ride in Toledo Creek wading. Meeting time not specified.	Joyce Evans (360) 427-0787
2-3	LGMC Field trip – Lakeside Gem & Mineral Club Little Naches (thunderegg, rhyolite)	Meets at 10:00 am Aug 2 at Kaner Flatts Campground Detail in field trip flier RSVP	Heather Moon (509) 586-1978
8-10	Far West Lapidary & Gem Society Show 10:00 am – 4:00 pm	North Bend Community Center 2222 N. Broadway, North Bend, OR	Don Innes (541) 396-5722
	Port Townsend Rock Club Annual Show 10:00 am – 6:00 pm	Jefferson Co. Fairgrounds 4907 Landers St., Port Townsend, WA	Garnett Brooks (360) 379-5531
14+28	LGMC: flint knapping, self-paced workshop. 6 – 9:00 pm No fee.	803 E. Edison St. Kennewick, WA	Mary Lou Omstead (509) 783-2798
15-17	2014 NFMS Annual Meeting; Hatrockhounds Gem & Mineral Society Annual Show 10:00 am – 4:00 pm Field trip to China Hollow mine day after show.	Hermiston Conference Center 415 S Hwy 395, Hermiston, OR Adv. Regis. form: Apr 2014 NFMS Newsletter	Judi Allison (541) 720-4950
	Clatsop Co. Gem, Mineral, Bead, Jewelry & Fossil Show; 10:00 am – 4:00 pm	Seaside Convention Center 415 First Ave., Seaside, OR	Jean Miller (971) 219-0323
16	Shelton Rock & Mineral Society Annual Show 9:00 am – 5:00 pm	Shelton Soccer Park Parking Lot 2102 John's Prairie Rd, Shelton, WA	Richard (360) 427-2497
	Field Trip - Northwest Opal Society Greenwater for agate and jasper in hard rock	Meets at 9:00 a.m. at the Enumclaw Ranger Station	Tony Johnson (253) 863-9238
19+20	LGMC: cabochon, self-paced workshops. 5:30 – 9:30 pm Fee \$1/hr	803 E. Edison St. Kennewick, WA	Mary Lou Omstead (509) 783-2798
19-23	Benton County Fair – LGMC rock, gem and mineral exhibit. Kathryn Larson, ph. 586-1203.	Club members are needed to talk with exhibit visitors, sell rock grab bags. 3 hrs gets you bus tickets & a fair ticket.	
23	Rock Kinetics Downsizing Sale 9:00 am – 5 pm	9330 180 th St SE, Snohomish, WA Agate, jasper, obsidian, petrified wood, thunder eggs.	rockkinetics@gmail.com
23	Maple Tree Lapidary's Annual Rock Sale 9:00 am – 4:00 pm (206) 618-9365	Kent, WA Over 1 ton of slabbed rock. 30 tons of rough rock. New and used lapidary tools and supplies. Many sale specials.	http://mapletreelapidary.com
23-24	NW Chapter, Fluorescent Minerals Society Annual meeting Featured speaker: Dr. Jeff Post, Fluorescent Diamonds at the Smithsonian Institute	Rice NW Museum of Rocks & Minerals 26385 NW Groveland Dr, Hillsboro, OR Show and tell. Lots of trading and selling. Door prizes. Contact: Don Newsome, info@uvsystems.com	
30-31	Scott's Rocks (show and fossil field trip) Noon – 5:00 pm	First United Methodist Church, Wesley Hall 175 N Main, Ashland, OR	Scott Blair (541) 621-2558
Dates		September 2014 Regional Events	
6-7	All Rockhounds Pow-Wow Club of America Fall Dig – American Forest Resources Teanaway Campground. Get driving directions at: www.allrockhoundspowwowclubofamerica.com	Agates, crystal nodules, jadeite, possibly Ellensburg blue. Tailgating & rock swapping encouraged. Saturday evening potluck. Dry camp. Outhouses, no potable water or electricity. Membership required (\$7.50/ea or \$15/family). Forest Services permit required (buy at trailhead ~\$5/day).	
13	Field Trip - Northwest Opal Society Meets 9:00 at Enumclaw Ranger Station	Little Naches Dig for Thunder-eggs in light hard rock.	Tony Johnson (253) 863-9238
20-21	Southern Washington Mineralogical Society Annual Show 20 th : 9 am – 6 pm, 21 st : 20 am – 5 pm	Castle Rock Fairgrounds, A Street 120 Fair Lane, Castle Rock, WA	(no contact info provided)
21	LGMC Fall Picnic and Auction 10 am setup, 12 noon picnic, auction following	Keewaydin Park, Pavilion area, Kennewick, WA Potluck. See Board minutes this issue for further details.	
25-26	Clackamette Mineral & Gem Club 50 th Annual Show 25 th : 9 am – 6 pm, 26 th : 10 am – 5 pm	Clackamas County Fairgrounds (no contact info provided) 694 NE 4 th Ave, Canby, OR	

Geology of Eastern Washington, With an Emphasis on Petrified Wood

Club meeting program, June 4, 2014

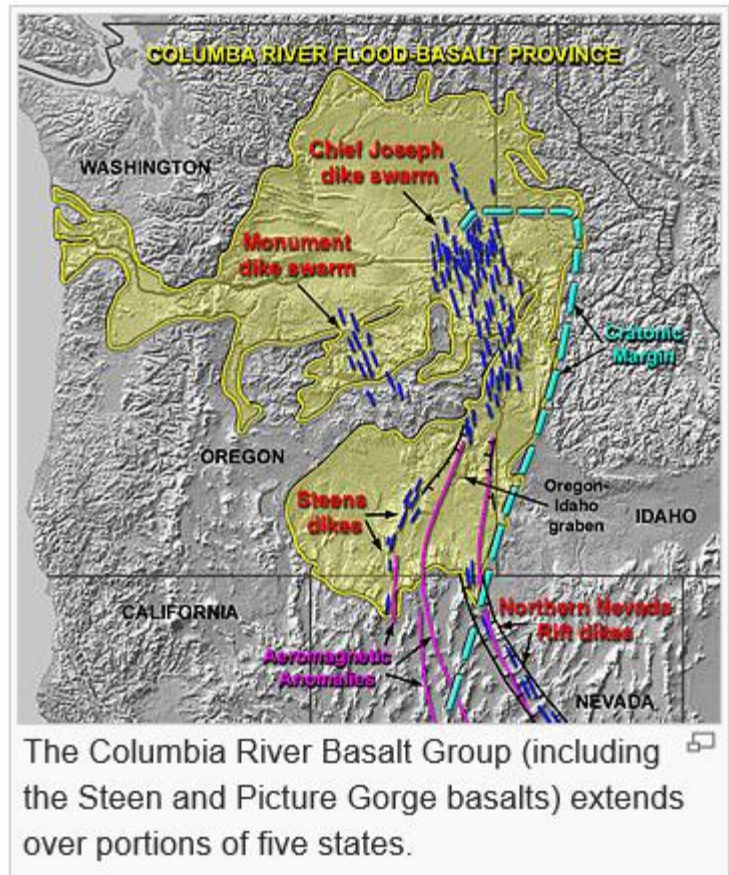
Presenter: Jack Powell, State Field Geologist (retired), WA Dept. of Natural Resources

Jack Powell has a gift for providing scientific information so that it is accessible to people of all ages and educational backgrounds. He began his career with the Atomic Energy Commission in 1963, subsequently spent 13 years at CWU and Shell Oil, and recently retired from the Department of Natural Resources after serving 21 years as the State Geologist.

Accompanied by a professional PowerPoint presentation, and his simple and light-hearted demonstrations of how some of the spectacular land formations of this region were formed, Dr. Powell's presentation left me with several lasting messages.

Eastern Washington lands were created by Fire, Flood and Ice.

- Fire – lava flows from 17 to 6.5 million years ago. Petrified wood was formed approximately 15.5 million years ago. Dr. Powell provided extensive information about how living forests became petrified wood, with some insightful and amusing stories of removal of petrified logs by crews of men building roads through eastern Washington.
- Ice – glaciation from 2.5 million to 10,000 years ago sculpted the landscape, and ground rock into Loess, which now forms some of the most productive agricultural land in the nation.
- Floods -- from Lake Missoula at least 40 times between 12.5 million and 20,000 years ago.



We live on 3 miles of basalt rock here. The impressive lava flows over millions of years oozed out of cracks in the Earth that resulted from the stress of tectonic plate movements. The lava came from the Montana "hot spot" now under Yellowstone National Park. Basalt makes up all of the ocean floor. The eyes, nose and mouth of the "man on the Moon" are basalt rock.

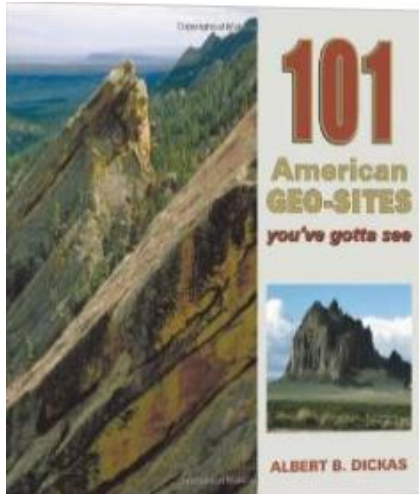
You need old holey rocks to form agates. Honeycombed basalt is vesicular basalt. Watch for an entablature slab on top of basalt columns. I especially enjoyed Dr. Powell's explanation of how basalt columns are formed.

This presenter is knowledgeable, entertaining, and an unusually good teacher. Thanks, Dr. Powell, for a great program! Carol Devine, Geode Editor

Rockhound Land Use Access

Closed to rockhounds - Evelyn Cataldo reported at the July Board meeting that Lolo Hot Springs, all Weyerhaeuser owned forest lands, most roads in the Blue Mountains, and agate collecting on Oregon coasts are now closed (or being closed) to rockhounds.

Rock collecting near rivers – Steve Shoemaker informs Club members that we must carry a Gold and Fish pamphlet on our person when collecting rocks within 200' of a Washington river to avoid a citation and fine from the Dept. of Fish and Wildlife. There are specific regulations prohibiting removal of rocks from rivers designated as fish breeding sites. Get the 2009 edition at wdfw.wa.gov/publications/00290/wdfw00290.pdf



Library Feature of the Month

101 American Geo-Sites You've Gotta See

Albert B. Dickas. 2012. Missoula, MT: Mountain Press Publ. Co. 15 page history of the Earth. Amazing geologic sites across the US, including Mount St. Helens and Dry Falls in Washington, Mount Mazama and Lava River Cave in Oregon. One page of photos, one page of explanations for each fascinating geologic site. Taking a road trip? This would be a great resource for fascinating places to visit.

Your suggestions for Club Library acquisitions are invited!

Check it out! Call the Club Librarian, **Jean Smith**, at (509) 586-8409. Ask that she bring the book or item you want to borrow to the next Club meeting. The list of library holdings is posted on the Club website. Members can borrow library resources for one month (\$2/mo. Late fee assessed), with a limit of 2 items borrowed at a time per member. Effective August 2014, a list of overdue books and their borrowers will be published in the Geode by authorization of the Board. Checking out an item from the Club Library is a great way to preview it before buying your own copy.

Club Leadership Opportunities Available

As provided by Club Bylaws, the positions of **President**, **Vice-President**, and **Director** will be filled by majority vote in an election at the October meeting this fall. These are two year terms of office. Candidates for the offices of President and Vice-President must have been members of the Club for at least one year. Dave Westland and Marty Casto have formed a three-member Nominating Committee, including Darla Shoemaker, Carol Devine, and Kathryn Larson. Their task is to recruit and nominate Club members to fill these influential leadership roles. Willingness to serve if elected is a prerequisite for nomination, whether through this committee or from the membership at large.

The Board is seeking volunteers to serve as the Club's **Rockhound Legislative Advocate**, as **Assistant Junior Club Leader**, and as **Assistant Legislative Advocate**. Club Members in these positions serve by Board appointment. Please notify Dave Westland or Martin Casto of your interest in these positions.

Members interested in serving as **Field Trip Wagon Masters** for a specific field trip they organize and coordinate are invited to notify either Ammon Bruce or Heather Moon.

Invitation to contribute to the Geode: Share your Rockhound Adventure this summer with your friends in the Club! Please write a one page article about your experience and provide several photos. Submission deadline and options are in the lower left corner of the front cover each issue. Thanks! Carol Devine, Geode Editor



THE GEODE

Volume 81, Issue 7

August 2014



LAKESIDE GEM & MINERAL CLUB, INC.
PO Box 6652
Kennewick, WA 99336-0603

Next Club Meeting: Aug. 6th, 6:30 social, 7:00 p.m. meeting

- **Program:** *Ellensburg's Famous Blue Agates*
Presenter: Nick Zentner, CWU Geology Department
- **Bragging table theme:** your favorite blue rocks including (but not limited to) Ellensburg Blue Agates

Features this issue:

- Geology of Eastern Washington – June Club meeting program recap
- August - September Regional Events
- Library feature of the month: *101 American Geo-Sites You've Gotta See!*



Don't miss the 2014 Northwest Federation of Mineralogical Societies (NFMS) Annual Gem & Mineral Show at the Convention Center in Hermiston, Oregon Aug 15-17th!



Club Affiliations:

American Federation of Mineralogical Societies (AFMS)
Northwest Federation of Mineralogical Societies (NFMS)
American Lands Access Association (ALAA)

<http://www.amfed.org>
<http://www.amfed.org/nfms>
<http://www.amlands.org>

Member: Tri-Cities Visitor and Convention Bureau