



**STEAM TURBINE GENERATOR CONTROL PANEL**

Stock# MP27

One (1) Free standing indoor steam turbine generator protection and control panel consists of following

- Woodward 505E extraction steam turbine Governor P/N 9907-167 Rev N, S/N 14364524
- Woodward Protech 203 Overspeed protection system P/N 9907-345 Rev K, S/N 14369757
- Woodward DSLC Digital synchronizer and load control P/N 9905-603 S/N 13513447
- Woodward Servo position controller P/N 8200-226 S/N 14416752 FOR hp valves
- SEL-300 G Generator management relay P/N 0300G303225X112
- SEL 2500A Generator RTD monitor
- Syncheck relay
- Duel Voltmeter Bus side and Generator side
- Duel Frequency meter Bus side and generator side
- Automatic voltage regulator DECS-200-1C, S/N H00820473 R V
- Voltage regulator interface programmer (GIP) Need not use
- ABB IDM 144 Power meter Digital indicating active and reactive power, current, power factor. Volts
- Bently Nevada 3500 Vibration Monitoring
- Kraus & Naimer RCB type C26LM lockout relay
- Allen-Bradly Panelview plus 700 HMI (Human Machine Interface)
- Allen-Bradly PLC model SLC-500
- Switches
  - Turn on syncheck, lower/raise speed, lower/raise voltage, open/close field contactor(excitation), AVR manual/auto mode, synchronism select mode
- Push buttons
  - Emergency, Protection reset, lamp test, silence Horn, Spare, Open Breaker(52G)
- Lights/indicators
  - Siren, Field contact closed, Breaker closed (52G)
- Cabinet lighting (120 VAC)
- AC and Dc circuit breakers for control power protection
- Auxiliary contactors
- Terminal blocks
- Field contactor
- Heaters

**Notes:**

Control Power Supply need 24 vdc, 20 amps from external (original Power supply(G1) 125 vdc to 24 vdc from cabinet removed)

Cabinet has two CPT Basler BE10494002, 2 kva, primary 208/416 v, 240/480 V , Secondary 120/240 v





**NSV Energy, LLC**

**[www.nsvenergy.com](http://www.nsvenergy.com)**



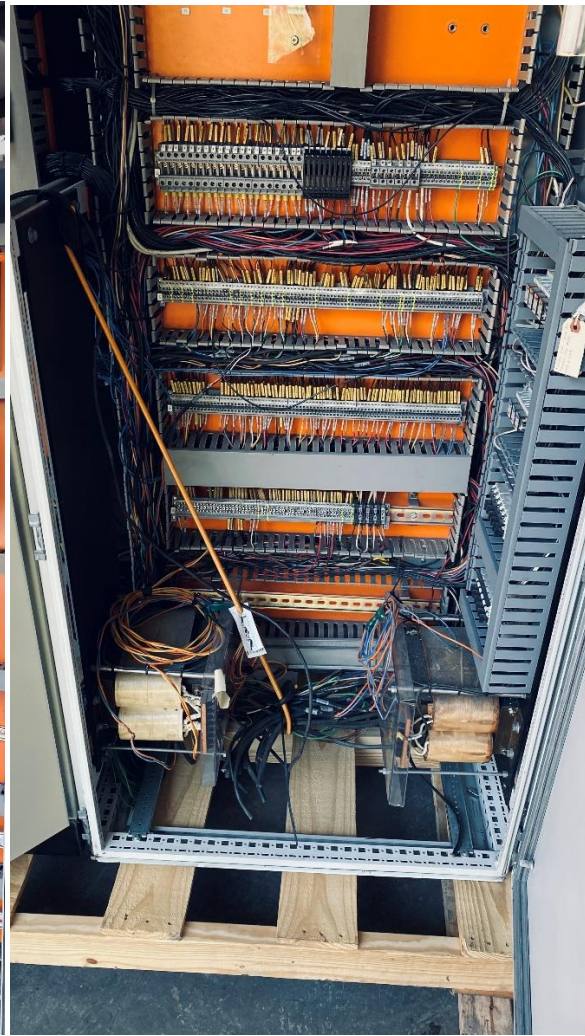
[sales@nsvenergy.com](mailto:sales@nsvenergy.com)

908-421-4139



**NSV Energy, LLC**

**[www.nsvenergy.com](http://www.nsvenergy.com)**



[sales@nsvenergy.com](mailto:sales@nsvenergy.com)

908-421-4139