

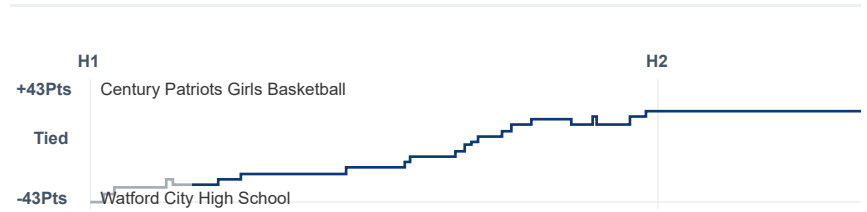
Box Score Report

CHS @ Watford City - Jan 31, 2023 - W 65-35

Period Stats

| Team | 1 | 2 | Final |
|------------|-----------|----|-----------|
| CHS | 39 | 26 | 65 |
| WCHS | 7 | 28 | 35 |

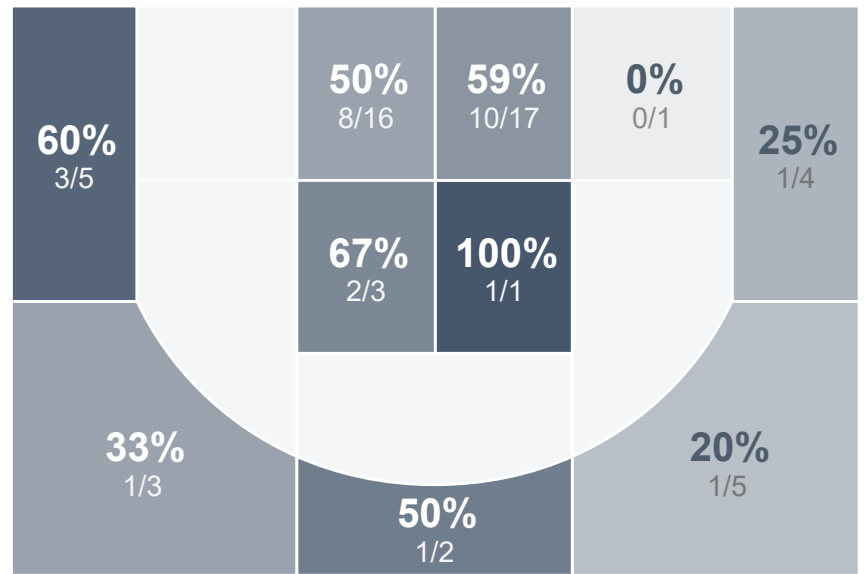
Run Graph



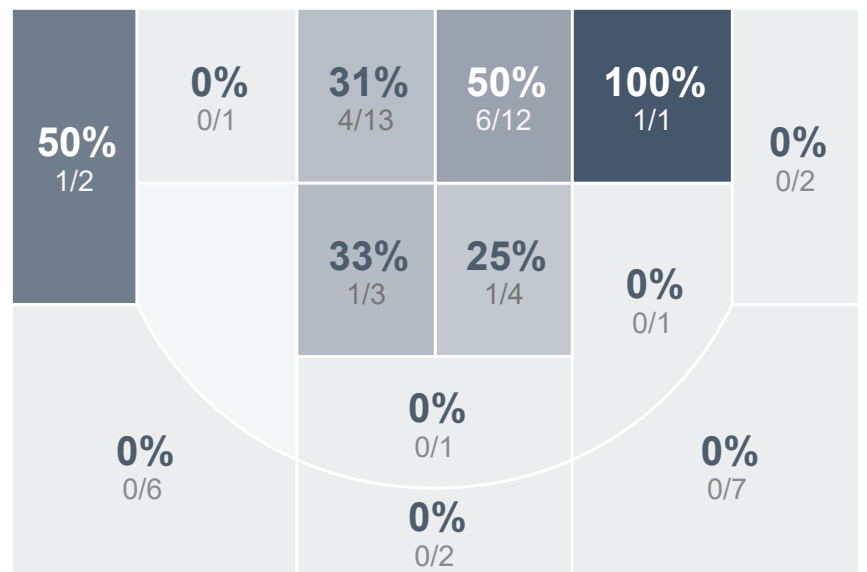
Team Stats

| | CHS | WCHS |
|------------------------|--------------|-------|
| Field Goal % | 49.1% | 25.5% |
| Effective Field Goal % | 55.3% | 26.4% |
| 2FG Made/Attempted | 21/38 | 13/36 |
| 2FG% | 55.3% | 36.1% |
| 3FG Made/Attempted | 7/19 | 1/19 |
| 3FG% | 36.8% | 5.3% |
| FT Made/Attempted | 2/4 | 6/13 |
| Free Throw Percentage | 50.0% | 46.2% |
| Points Per Possession | 0.93 | 0.51 |
| Transition Points | 15 | 12 |
| Points Off Turnovers | 19 | 19 |
| Second Chance Points | 10 | 5 |
| Points in the Paint | 42 | 24 |
| Offensive Rebounds | 11 | 9 |
| Defense Rebounds | 34 | 15 |
| Assists | 15 | 3 |
| Deflections | 12 | 5 |
| Steals | 13 | 11 |
| Blocks | 0 | 0 |
| Turnovers | 22 | 17 |
| Personal Fouls | 13 | 6 |
| Charges Taken | 0 | 0 |

Century Patriots Girls Basketball



Watford City High School



Century Patriots Girls Basketball's Player Stats

| Name | Pts | FG | 3FG | FT | +/- | MINS | OREB | DREB | AST | DEFL | STL | BLK | TO | FOUL | CHG |
|----------------------|-----|------|-----|-----|------|------|------|------|-----|------|-----|-----|----|------|-----|
| #3 Eden Fridley | 9 | 3/9 | 3/7 | 0/0 | + 37 | 20 | 1 | 3 | 1 | 4 | 2 | 0 | 2 | 2 | 0 |
| #5 Zoie Austin | 7 | 3/8 | 1/2 | 0/0 | + 17 | 18 | 1 | 2 | 2 | 2 | 1 | 0 | 5 | 3 | 0 |
| #10 Abby Fosland | 2 | 1/3 | 0/1 | 0/0 | - 3 | 12 | 0 | 2 | 1 | 0 | 1 | 0 | 1 | 1 | 0 |
| #11 Ziah GreyBull | 7 | 3/5 | 1/1 | 0/0 | + 23 | 23 | 1 | 5 | 5 | 1 | 2 | 0 | 1 | 2 | 0 |
| #12 Londyn Dschaak | 3 | 1/3 | 1/2 | 0/0 | - 1 | 13 | 0 | 0 | 1 | 0 | 0 | 0 | 6 | 0 | 0 |
| #13 Bergan Kinnebrew | 20 | 9/11 | 1/2 | 1/2 | + 34 | 18 | 1 | 8 | 2 | 0 | 0 | 0 | 2 | 0 | 0 |
| #14 Ashlyn Buchholz | 6 | 3/3 | 0/0 | 0/0 | + 18 | 16 | 1 | 1 | 2 | 2 | 1 | 0 | 1 | 2 | 0 |
| #21 Grace Lang | 2 | 1/1 | 0/0 | 0/0 | - 1 | 4 | 0 | 0 | 0 | 0 | 1 | 0 | 0 | 0 | 0 |
| #23 Gabi Bird | 0 | 0/2 | 0/1 | 0/0 | + 4 | 13 | 0 | 2 | 0 | 1 | 3 | 0 | 1 | 0 | 0 |
| #24 Katie Brown | 3 | 1/2 | 0/1 | 1/2 | - 1 | 3 | 1 | 1 | 0 | 0 | 0 | 0 | 0 | 0 | 0 |
| #25 Emma Guthmiller | 0 | 0/1 | 0/0 | 0/0 | + 4 | 4 | 0 | 1 | 0 | 0 | 0 | 0 | 0 | 0 | 0 |
| #30 Emma Davis | 0 | 0/1 | 0/1 | 0/0 | - 1 | 5 | 0 | 0 | 0 | 1 | 0 | 0 | 0 | 0 | 0 |
| #33 Erika Lee | 6 | 3/6 | 0/0 | 0/0 | + 28 | 20 | 2 | 5 | 0 | 1 | 2 | 0 | 0 | 2 | 0 |
| #34 Quinn Kost | 0 | 0/1 | 0/1 | 0/0 | - 7 | 4 | 0 | 0 | 0 | 0 | 0 | 0 | 2 | 1 | 0 |
| #35 Madison Conner | 0 | 0/1 | 0/0 | 0/0 | - 1 | 7 | 1 | 2 | 1 | 0 | 0 | 0 | 1 | 0 | 0 |

Watford City High School's Player Stats

| Name | Pts | FG | 3FG | FT | +/- | MINS | OREB | DREB | AST | DEFL | STL | BLK | TO | FOUL | CHG |
|----------------------|-----|------|-----|-----|------|------|------|------|-----|------|-----|-----|----|------|-----|
| #4 Kenzy Kuchenbuch | 0 | 0/1 | 0/0 | 0/0 | + 2 | 12 | 0 | 1 | 0 | 0 | 0 | 0 | 1 | 0 | 0 |
| #5 Jessica Mogen | 14 | 6/16 | 0/2 | 2/5 | - 27 | 29 | 4 | 3 | 1 | 2 | 4 | 0 | 5 | 1 | 0 |
| #10 Bailey Mattson | 4 | 2/5 | 0/1 | 0/0 | - 36 | 32 | 1 | 1 | 1 | 1 | 2 | 0 | 2 | 1 | 0 |
| #11 Gracen Breitbach | 8 | 2/12 | 1/9 | 3/4 | - 36 | 32 | 1 | 3 | 0 | 1 | 3 | 0 | 5 | 3 | 0 |
| #21 Adi Schaff | 7 | 3/10 | 0/1 | 1/4 | - 25 | 30 | 0 | 4 | 0 | 0 | 0 | 0 | 1 | 1 | 0 |
| #22 Jordyn Pedersen | 2 | 1/8 | 0/4 | 0/0 | - 33 | 28 | 2 | 2 | 0 | 1 | 1 | 0 | 3 | 0 | 0 |
| #23 Audrey Fowler | 0 | 0/3 | 0/2 | 0/0 | + 5 | 17 | 0 | 1 | 1 | 0 | 1 | 0 | 0 | 0 | 0 |