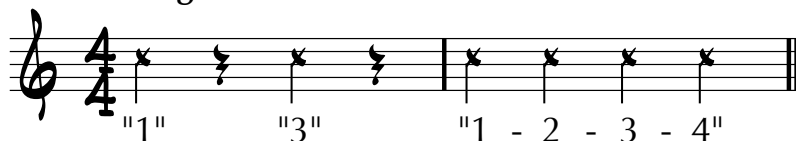
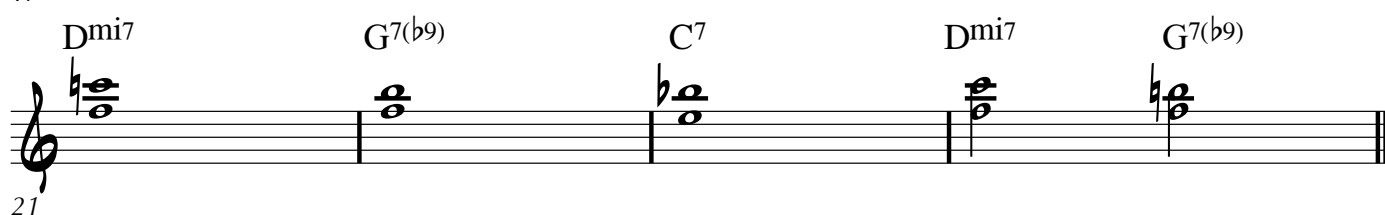
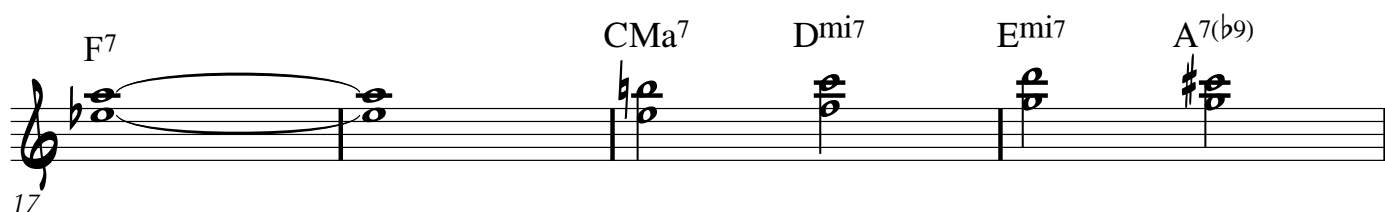
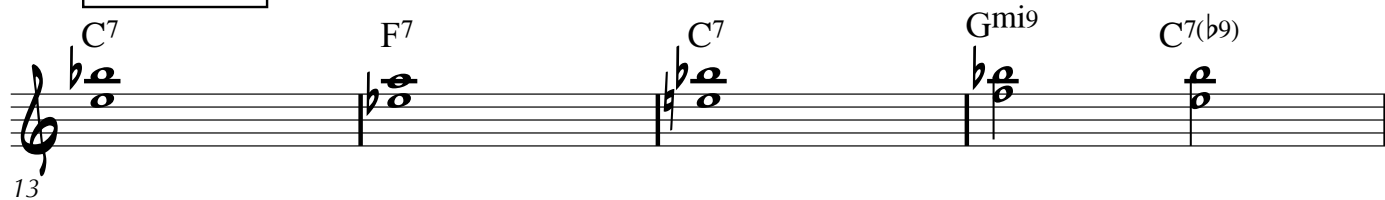


NMEA All State Jazz Audition ETUDE C1-BLUES*Swing: M.M. ♩ = 120***COUNTOFF:****MELODY****IMPROVISE!**

2 **NMEA All State Jazz Audition ETUDE C1** - BARITONE Saxophone

2nd CHORUS

The musical score for the 2nd Chorus of NMEA All State Jazz Audition Etude C1 for Baritone Saxophone is presented in three staves. The key signature is one flat (Bb), and the time signature is 4/4. The score includes various jazz chords and melodic lines.

Staff 1 (Measures 25-29):

- Measure 25: Chord C7 (F4, Ab4, Bb4, C5).
- Measure 26: Chord F7 (Bb3, C4, Eb4, F4).
- Measure 27: Chord C7 (F4, Ab4, Bb4, C5).
- Measure 28: Chord Gmi9 (Bb3, C4, Eb4, F4, Ab4, Bb4, C5).
- Measure 29: Chord C7(b9) (F4, Ab4, Bb4, C5, Db5).

Staff 2 (Measures 30-33):

- Measure 30: Chord F7 (Bb3, C4, Eb4, F4).
- Measure 31: Chord CMa7 (F4, Ab4, Bb4, C5).
- Measure 32: Chord Dmi7 (Bb3, C4, Eb4, F4).
- Measure 33: Chord Emi7 (G3, Ab3, Bb3, C4).
- Measure 34: Chord A7(b9) (C4, Eb4, F4, G4, Ab4).

Staff 3 (Measures 35-38):

- Measure 35: Chord Dmi7 (Bb3, C4, Eb4, F4).
- Measure 36: Chord G7(b9) (Bb3, C4, Eb4, F4, Ab4).
- Measure 37: Chord C7(b5) (F4, Ab4, Bb4, C5, Db5).
- Measure 38: Chord C7(b5) (F4, Ab4, Bb4, C5, Db5).