

VTM Professional Services

Capability Statement

UCP Cert. DBE • SBE Certifying Member: FDOT
NAICS: 54134

VTM Professional Services offers heavy steel and rebar detailing. We have experience not only in detailing steel and estimations, but can also produce crane lift plans for lifting and setting heavy steel bridge components.

Past Performance

- ◆ Ed's Crane Service
- ◆ Big Iron International
- ◆ G & C Welding Specialist, LLC
- ◆ Varies Contractors
- ◆ Florida Power & Light (FPL) Martin Plant
- ◆ Chiller Lifts at the Orange County Convention Center
- ◆ Bausch & Lomb Roof Top Units (RTU) lifts,
- ◆ FAA Beam Lift



Certifications and Codes

- ◆ Duns #097891860
- ◆ FDOT UCP Certified DBE 947 CADD Services
- ◆ City of Orlando MBE: R08101004

Core Competences

VTM offers cad services utilizing AutoCAD, Revit, SolidWorks and 3D lift plan software.

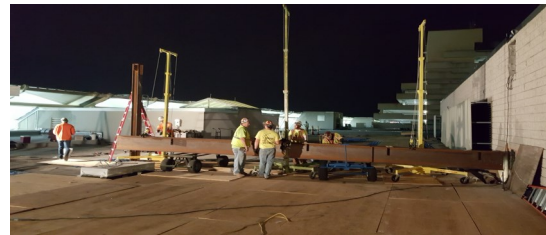


Services

- ◆ Off Loading Plans & Dock Analysis
- ◆ Jacking, Roll-off & Transportation Plans
- ◆ Rigging Design, Crane Lift Plans
- ◆ HVAC Mechanical Design
- ◆ Steel & Rebar Detailing

Additional Services

- ◆ Architectural Plans
- ◆ Commercial & Resident
- ◆ BIM Management



137 S. Courtenay Pkwy #693
Merritt Island, FL 32952

Phone: (321) 609-0735 Fax: (267) 382-2043

Email: vinton.moton@vtmprofessionalservices.com